

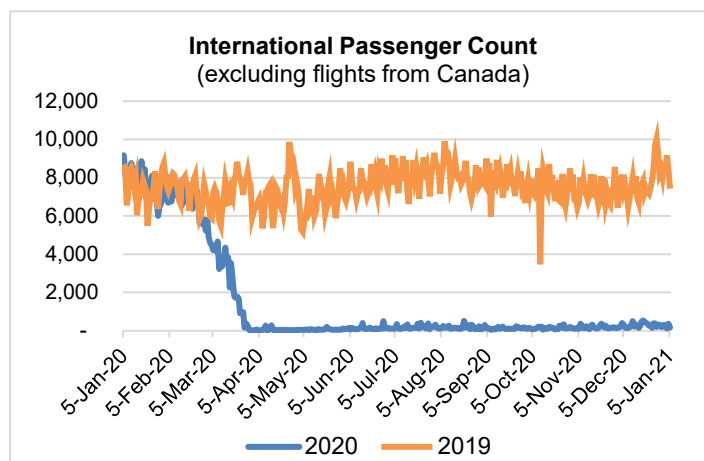
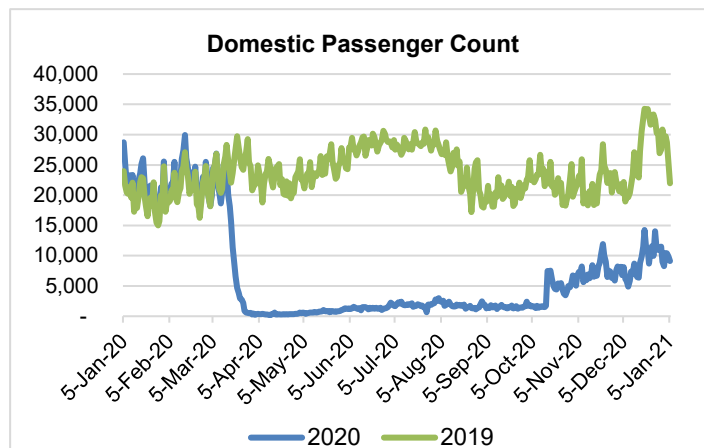
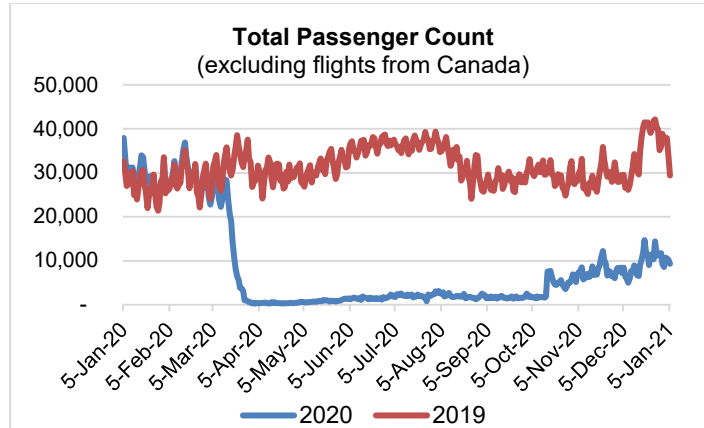
# HTA COVID-19 UPDATE

(Issued: 1/6/21 @ 4:30pm)

Reason for Trip by Arrival Airport - Transpacific Screened Passengers as of 01/05/21	Honolulu (HNL)	Kahului (OGG)	Kona (KOA)	Lihue (LIH)	Grand Total
Airline Crew	346	157	96	9	608
Connecting Flight (Transit)	309	16	5	2	332
Corporate Meeting	2	2	1	0	5
Essential Worker	109	42	12	3	166
Honeymoon	9	6	4	0	19
Incentive Trip	1	1	0	0	2
Intended Resident	149	47	44	2	242
Military or Federal Government	141	2	0	0	143
Other	58	13	6	2	79
Other Business	64	31	10	2	107
Pleasure/Vacation	1,371	1,397	563	19	3,350
Returning Resident	1,894	286	238	28	2,446
Sports Event	3	9	0	0	12
To Attend School	140	2	7	0	149
To Get Married	2	2	0	0	4
Visiting Friends or Relatives	568	192	168	12	940
<b>Grand Total</b>	<b>5,166</b>	<b>2,205</b>	<b>1,154</b>	<b>79</b>	<b>8,604</b>

**Source:** Safe Travels program developed by the State of Hawaii Office of Enterprise Technology Services

**Note:** The data is preliminary and subject to change



**Daily Passenger Count Table**

01/05/2021	Domestic	International	Total
Oahu	6122	177	6299
Maui	1930		1930
Island of Hawaii	1029		1029
Kauai	46		46
State	9127	177	9304

## Novel Coronavirus in Hawaii

### COVID-19 Positive Cases

*Cumulative totals as of 12:00pm on January 6, 2021*

Total Confirmed Cases	22,310* (143 new)
Hawaii	1,946
Kauai	153
Lanai	106
Maui	1119†
Molokai	23
Oahu	18,499
Out of State	467
Pending	0
Required Hospitalization	1519‡
Hawaii Deaths	299
Cases in the past 14 days	1,543**

### Footnotes for COVID-19 Cases

\*As a result of updated information, one case on Maui was removed from the counts.

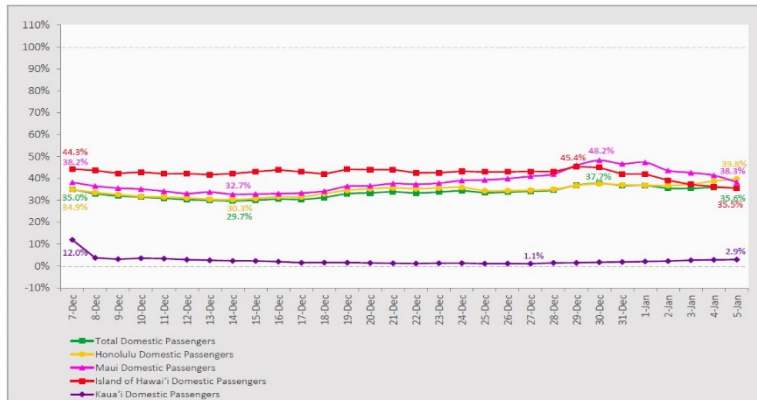
\*\*Using cases reported in the past 14 days provides a rough approximation of the number of cases currently meeting criteria for isolation. This proxy number for "active cases" resolves classification issues for cases unable to be reached or who are out of jurisdiction, for whom precise release from isolation date may not be possible to determine. It is also not influenced by lags in data entry. (This total does not include Hawaii residents diagnosed outside of Hawaii)

† One case is a Lanai resident whose exposure is on Maui Island and who will be remaining on Maui Island for the interim.

‡Includes Hawaii residents hospitalized out of state.

## 7-Day Domestic by Island Moving Average Daily Passenger Volume

2021 Volume as Percentage of 2020 Volume  
Through January 5, 2021



Source: HVCB analysis based on data from DBEDT  
Note: Passenger volume figures include both visitors and residents.

## Domestic by Island Month-to-Date and Year-to-Date Daily Passenger Volume

2021 Volume versus 2020 Volume  
Through January 5, 2021

January 2021 (Month-to-Date through January 5)

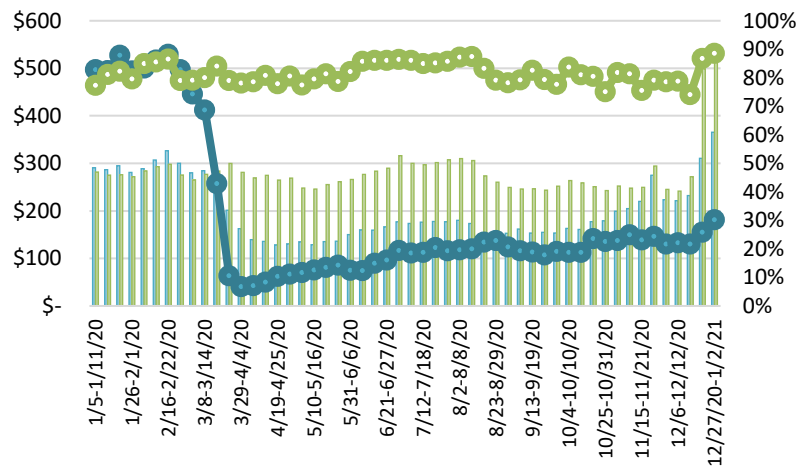
	2021	2020	Volume Change	Percent Change
Honolulu	30,789	81,571	-50,782	-62.3%
Maui County	11,248	32,820	-21,572	-65.7%
Island of Hawai'i	5,618	17,720	-12,102	-68.3%
Kauai	385	13,221	-12,836	-97.1%
<b>Total</b>	<b>48,040</b>	<b>145,332</b>	<b>-97,292</b>	<b>-66.9%</b>

2021 (Year-to-Date through January 5)

	2021	2020	Volume Change	Percent Change
Honolulu	30,789	81,571	-50,782	-62.3%
Maui County	11,248	32,820	-21,572	-65.7%
Island of Hawai'i	5,618	17,720	-12,102	-68.3%
Kauai	385	13,221	-12,836	-97.1%
<b>Total</b>	<b>48,040</b>	<b>145,332</b>	<b>-97,292</b>	<b>-66.9%</b>

Source: HVCB analysis based on data from DBEDT  
Note: Passenger volume figures include both visitors and residents. Total includes other international passengers. 2020 includes one additional day due to Leap Year (February 29th, 2020).

## State of Hawai'i Hotel Performance by Week - 2020 vs 2019



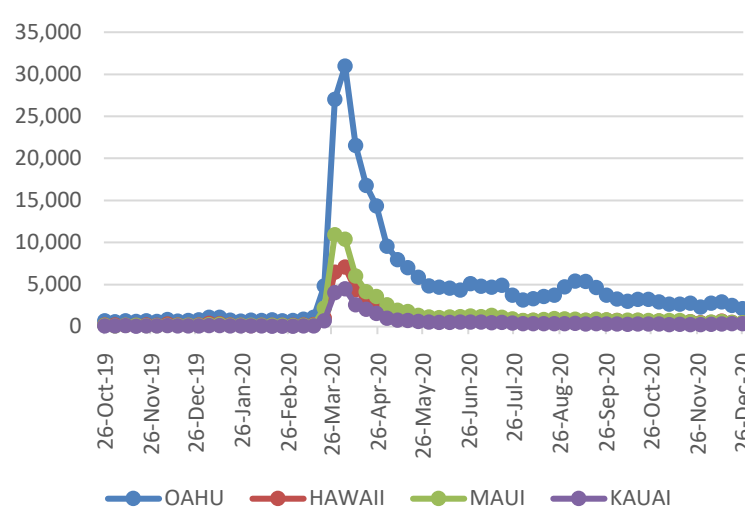
Source: STR, Inc. © Copyright 2021 Hawai'i Tourism Authority

## Hawaii Hotel Performance Info:

For the week of December 27 – January 02, 2021

	Occupancy	ADR	RevPAR
<b>State of Hawaii</b>	30.2%	\$ 365.49	\$ 110.33
<b>Oahu</b>	30.8%	\$ 216.01	\$ 66.46
<b>Maui County</b>	30.8%	\$ 666.33	\$ 205.04
<b>Kauai County</b>	13.3%	\$ 205.39	\$ 27.22
<b>Island of Hawaii</b>	36.8%	\$ 442.00	\$ 162.47

## 2020 Initial Weekly Unemployment Claims by Island



## Weekly Unemployment Initial Claims: December 26, 2020

<b>State of Hawaii</b>	3,472
<b>C&amp;C of Oahu</b>	2,147
<b>Hawaii County</b>	418
<b>Maui County</b>	468
<b>Kauai County</b>	346
<b>Agent</b> (filed in Hawaii against another state)	93

## News Highlights

January 6, 2021

**Honolulu Star Advertiser:** [State officials shut down Maui beach due to large crowds with maskless dancers, blatant nudity](#)

**Hawaii News Now:** [State to expand eligibility for COVID vaccine to those 75 and up, more essential workers](#)

**West Hawaii Today:** [Rollout of COVID vaccine for general population eyed for May](#)

**The Garden Island:** [Kawakami shares 2021 goals, pandemic thoughts](#)

**The Garden Island:** [Three new cases of COVID-19 announced Tuesday](#)

**Hawaii Tribune Herald:** [Economic forecast: Visitor numbers could hit 6M this year](#)

**The Mercury News:** [Traveling to Hawaii during COVID-19: Requirements and what to know before you go](#)

**Lonely Planet:** [You can visit this Hawaiian island - if you stay in a "resort bubble"](#)

**Travel Weekly:** [U.S. airlines call for testing to replace bans](#)

## Helpful Resources

Department of Health  
<https://hawaiiicovid19.com/>

## Department of Health

<https://health.hawaii.gov/docd/advisories/novel-coronavirus-2019>

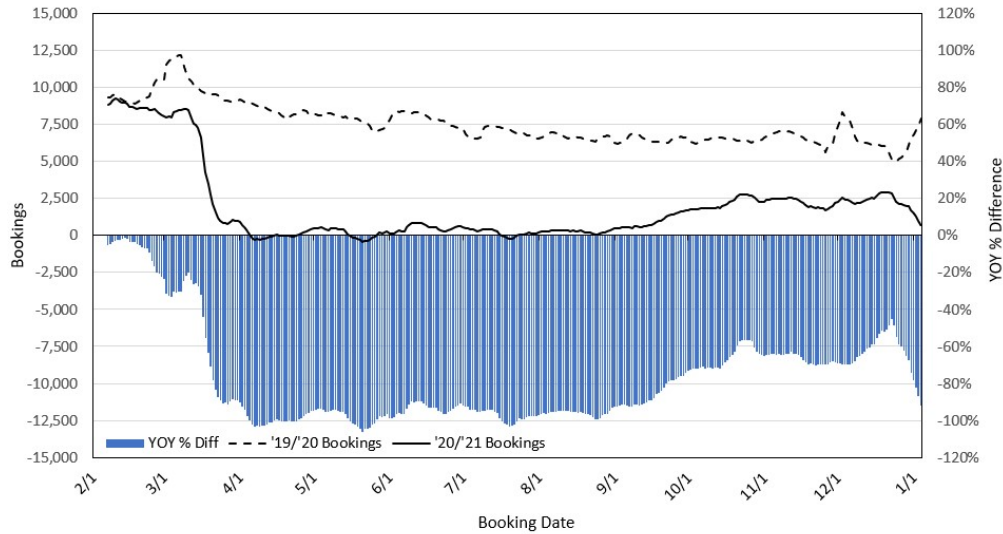
## Dept. of Business, Economic Development & Tourism

<https://dbedt.hawaii.gov/economic/covid19/>

## Department of Transportation

<https://hidot.hawaii.gov/coronavirus/>

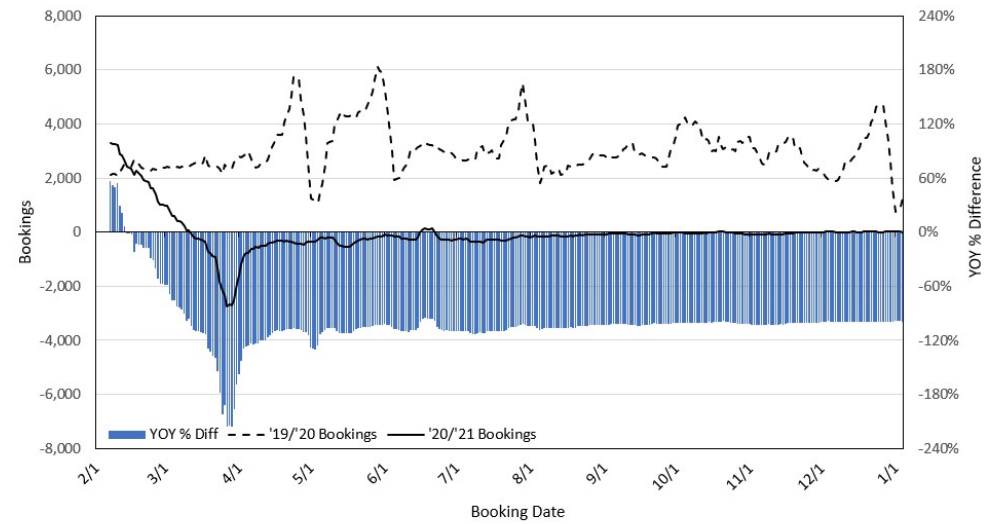
### Travel Agency Bookings to Hawaii for Future Arrivals\* Based on a 7-day Moving Average, 2021 vs 2020 U.S.



\*Future Arrivals refers to all arrivals that are 'future' relative to the referenced booking date.  
Source: Global Agency Pro

Update: Jan 4, 2021

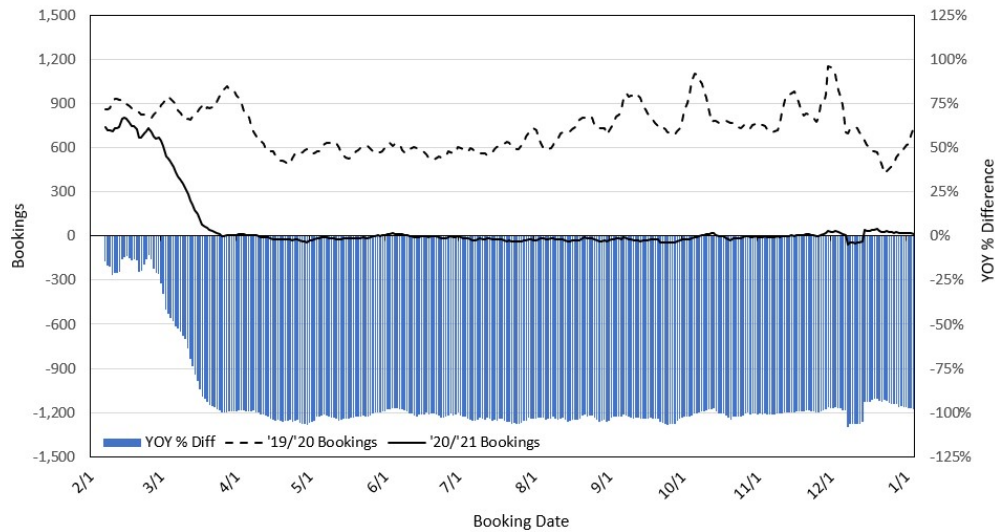
### Travel Agency Bookings to Hawaii for Future Arrivals\* Based on a 7-day Moving Average, 2020 vs 2019 Japan



\*Future Arrivals refers to all arrivals that are 'future' relative to the referenced booking date.  
Source: Global Agency Pro

Update: Jan 4, 2021

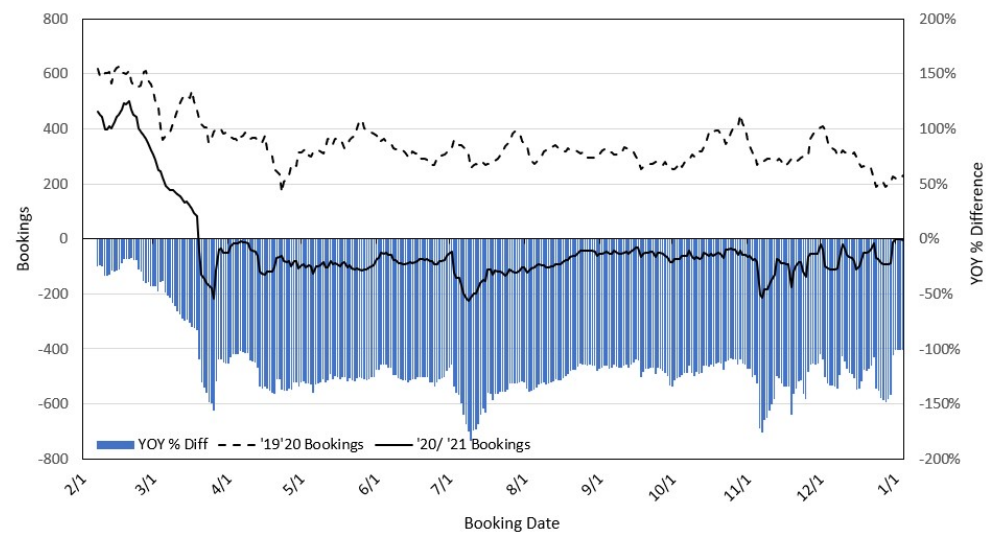
### Travel Agency Bookings to Hawaii for Future Arrivals\* Based on a 7-day Moving Average, 2020 vs 2019 Canada



\*Future Arrivals refers to all arrivals that are 'future' relative to the referenced booking date.  
Source: Global Agency Pro

Update: Jan 4, 2021

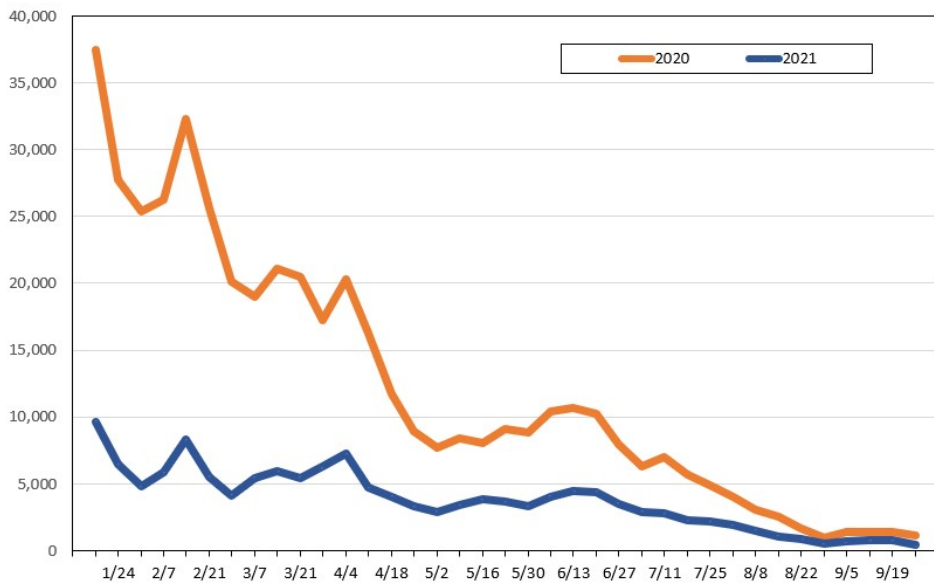
### Travel Agency Bookings to Hawaii for Future Arrivals\* Based on a 7-day Moving Average, 2020 vs 2019 Australia



\*Future Arrivals refers to all arrivals that are 'future' relative to the referenced booking date.  
Source: Global Agency Pro

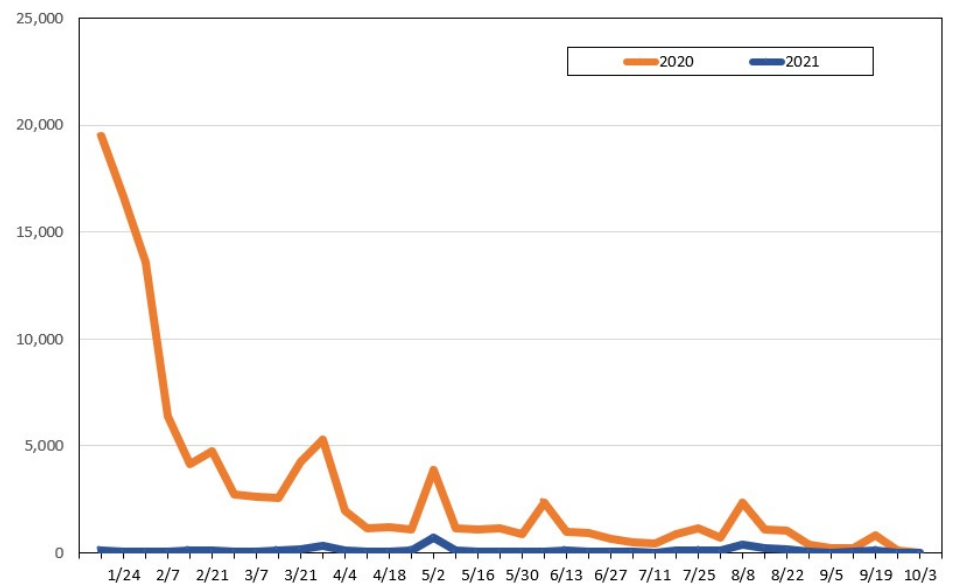
Update: Jan 4, 2021

**Travel Agency Weekly Bookings for Future Travel to Hawai'i as of January 4, 2021**  
U.S.



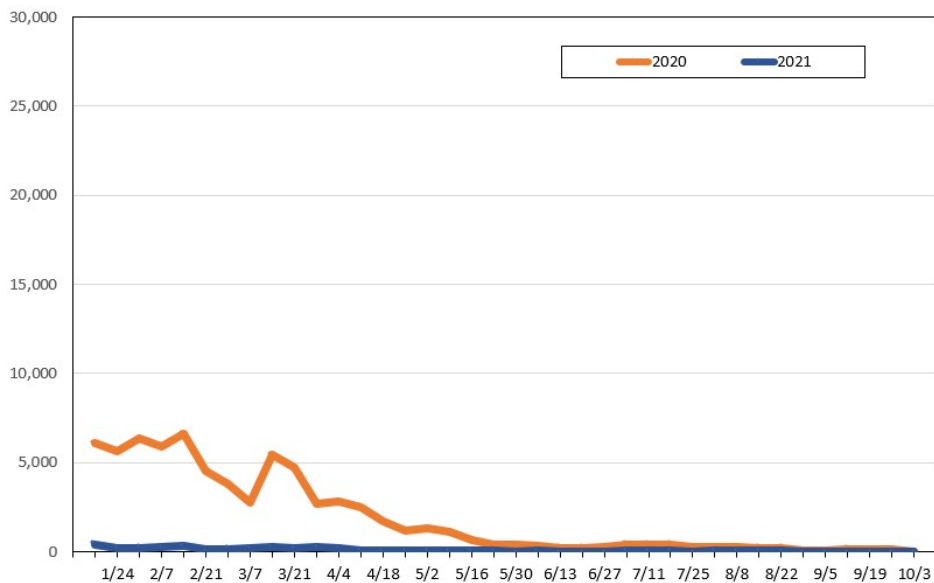
Source: Global Agency Pro, as of January 4, 2021

**Travel Agency Weekly Bookings for Future Travel to Hawai'i as of January 4, 2021**  
Japan



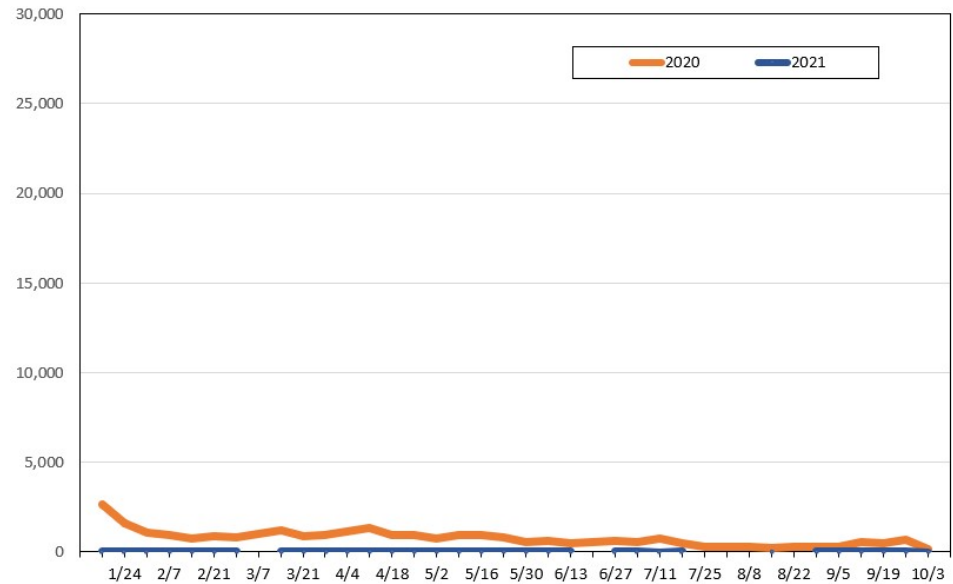
Source: Global Agency Pro, as of January 4, 2021

**Travel Agency Weekly Bookings for Future Travel to Hawai'i as of January 4, 2021**  
Canada



Source: Global Agency Pro, as of January 4, 2021

**Travel Agency Weekly Bookings for Future Travel to Hawai'i as of January 4, 2021**  
Australia



Source: Global Agency Pro, as of January 4, 2021