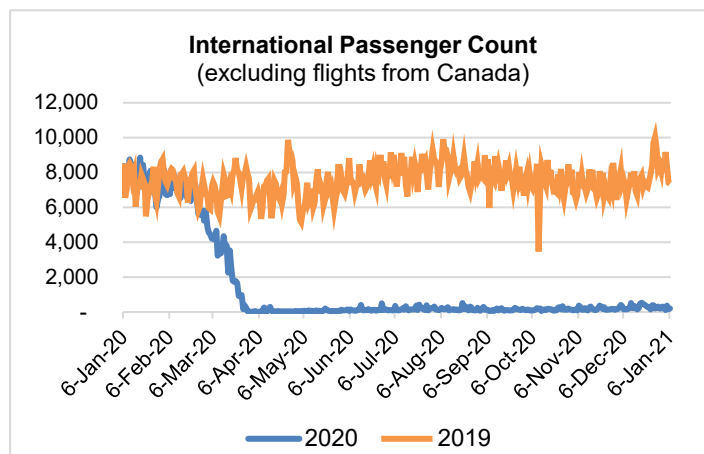
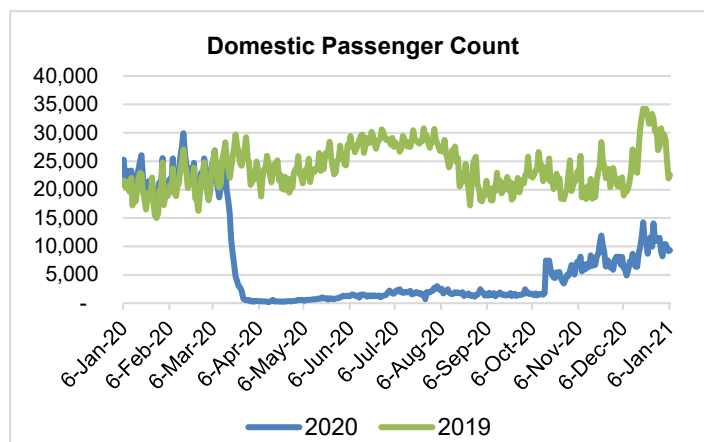
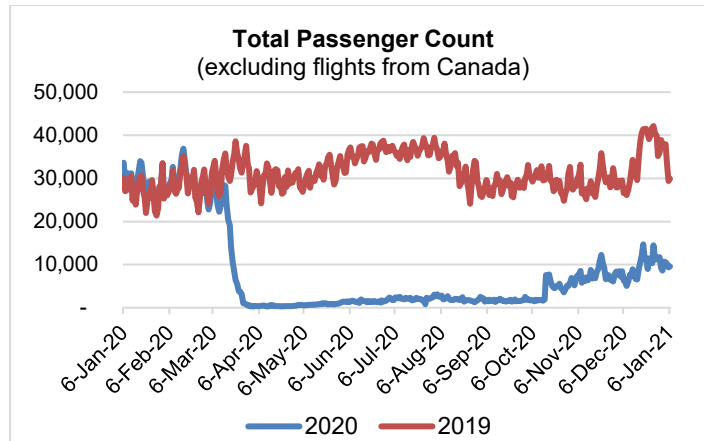


HTA COVID-19 UPDATE

(Issued: 1/7/21 @ 4:30pm)

Reason for Trip by Arrival Airport - Transpacific Screened Passengers as of 01/06/21	Honolulu (HNL)	Kahului (OGG)	Kona (KOA)	Lihue (LIH)	Grand Total
Airline Crew	403	181	80	8	672
Connecting Flight (Transit)	336	20	2	0	358
Corporate Meeting	1	0	0	0	1
Essential Worker	111	32	16	2	161
Honeymoon	5	0	4	0	9
Incentive Trip	0	0	1	0	1
Intended Resident	132	30	38	8	208
Military or Federal Government	192	3	0	0	195
Other	64	23	11	0	98
Other Business	51	38	10	0	99
Pleasure/Vacation	1,513	1,678	550	27	3,768
Returning Resident	1,726	254	192	32	2,204
Sports Event	11	12	0	0	23
To Attend School	135	1	16	0	152
To Get Married	1	5	0	0	6
Transit	0	0	0	0	0
Visiting Friends or Relatives	732	181	184	24	1,121
Grand Total	5,413	2,458	1,104	101	9,076

Source: Safe Travels program developed by the State of Hawaii Office of Enterprise Technology Services
Note: The data is preliminary and subject to change



Daily Passenger Count Table

01/06/2021	Domestic	International	Total
Oahu	6151	206	6357
Maui	2144		2144
Island of Hawaii	952		952
Kauai	88		88
State	9335	206	9541

Novel Coronavirus in Hawaii

COVID-19 Positive Cases

Cumulative totals as of 12:00pm on January 7, 2021

Total Confirmed Cases	22,631* (322 new)
Hawaii	1,964
Kauai	154
Lanai	106
Maui	1175†
Molokai	23
Oahu	18,711
Out of State	498
Pending	0
Required Hospitalization	1521‡
Hawaii Deaths	299
Cases in the past 14 days	1,831**

Footnotes for COVID-19 Cases

*As a result of updated information, one case on Oahu was removed from the counts.

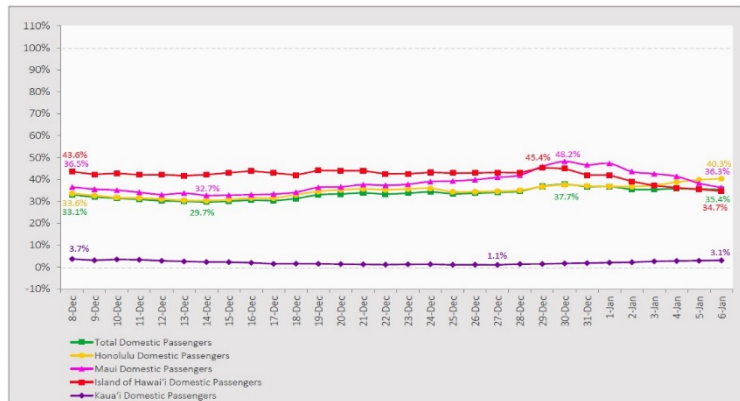
**Using cases reported in the past 14 days provides a rough approximation of the number of cases currently meeting criteria for isolation. This proxy number for "active cases" resolves classification issues for cases unable to be reached or who are out of jurisdiction, for whom precise release from isolation date may not be possible to determine. It is also not influenced by lags in data entry. (This total does not include Hawaii residents diagnosed outside of Hawaii)

† One case is a Lanai resident whose exposure is on Maui Island and who will be remaining on Maui Island for the interim.

‡Includes Hawaii residents hospitalized out of state.

7-Day Domestic by Island Moving Average Daily Passenger Volume

2021 Volume as Percentage of 2020 Volume
Through January 6, 2021



Source: HVCB analysis based on data from DBEDT
Note: Passenger volume figures include both visitors and residents.

Domestic by Island Month-to-Date and Year-to-Date Daily Passenger Volume

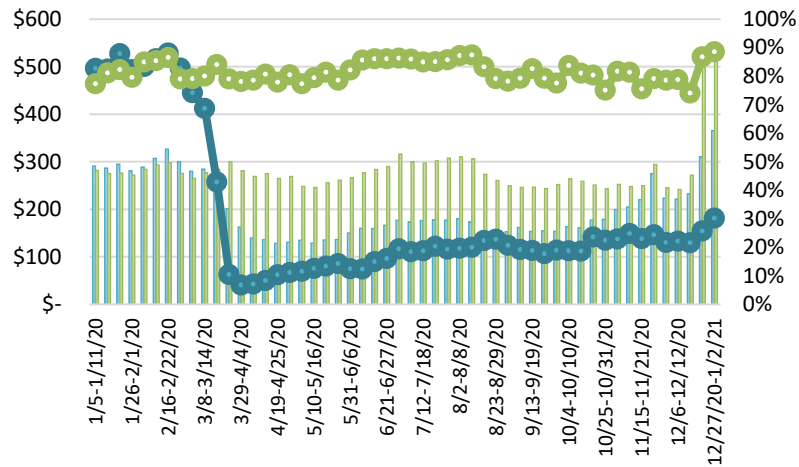
2021 Volume versus 2020 Volume
Through January 6, 2021

January 2021 (Month-to-Date through January 6)				
	2021	2020	Volume Change	Percent Change
Honolulu	36,990	95,175	-58,185	-61.1%
Maui County	13,392	38,819	-25,427	-65.5%
Island of Hawai'i	6,570	20,956	-14,386	-68.6%
Kauai	473	15,639	-15,166	-97.0%
Total	57,425	170,589	-113,164	-66.3%

2021 (Year-to-Date through January 6)				
	2021	2020	Volume Change	Percent Change
Honolulu	36,990	95,175	-58,185	-61.1%
Maui County	13,392	38,819	-25,427	-65.5%
Island of Hawai'i	6,570	20,956	-14,386	-68.6%
Kauai	473	15,639	-15,166	-97.0%
Total	57,425	170,589	-113,164	-66.3%

Source: HVCB analysis based on data from DBEDT
Note: Passenger volume figures include both visitors and residents. Total includes other international passengers.

State of Hawai'i Hotel Performance by Week - 2020 vs 2019



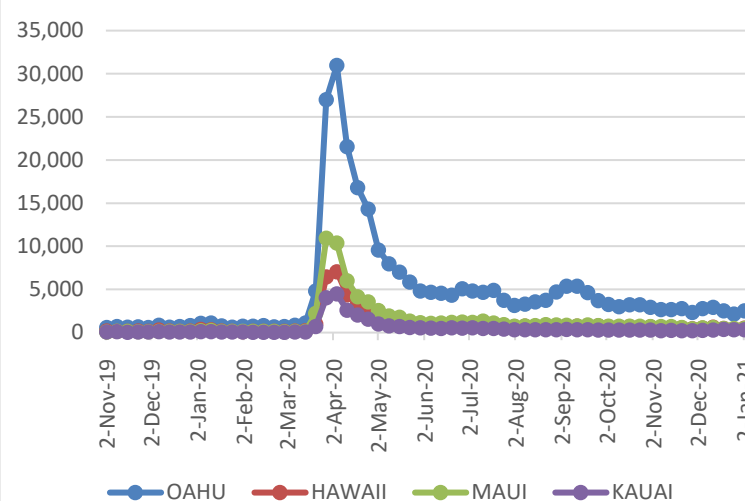
Source: STR, Inc. © Copyright 2021 Hawai'i Tourism Authority

Hawaii Hotel Performance Info:

For the week of December 27 – January 02, 2021

	Occupancy	ADR	RevPAR
State of Hawaii	30.2%	\$ 365.49	\$ 110.33
Oahu	30.8%	\$ 216.01	\$ 66.46
Maui County	30.8%	\$ 666.33	\$ 205.04
Kauai County	13.3%	\$ 205.39	\$ 27.22
Island of Hawaii	36.8%	\$ 442.00	\$ 162.47

2020 Initial Weekly Unemployment Claims by Island



Weekly Unemployment Initial Claims: January 02, 2021

State of Hawaii	4,008
C&C of Oahu	2,529
Hawaii County	539
Maui County	488
Kauai County	326
Agent (filed in Hawaii against another state)	126

News Highlights

January 7, 2021

Hawaii News Now: [There are new coronavirus strains: Can our vaccines stop then?](#)

Hawaii News Now: [Kauai Marriott resort to lay off more than 450 employees](#)

Hawaii Tribune-Herald: [Rollout of COVID vaccine for general population eyed for May](#)

West Hawaii Today: [Shortage of Hawaii doctors worsens during COVID-19 pandemic](#)

The Garden Island: [State launches AlohaSafe Alert app](#)

The Maui News: [COVID-19 cases at Harbor Lights up to 75](#)

Hawaii Magazine: [5 Moments that Defined Hawaii's 2020](#)

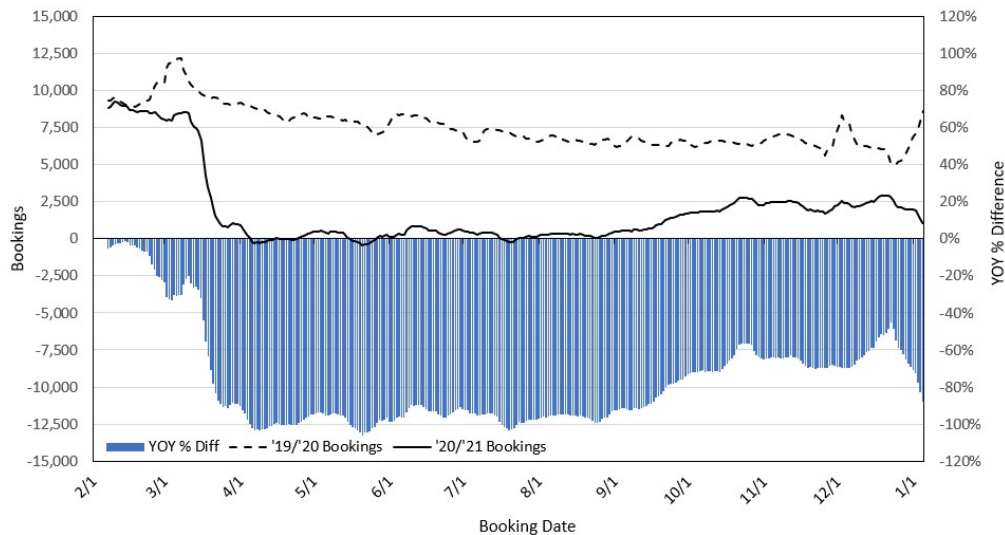
Skift: [Lessons From a Tourism Pushback in Hawaii](#)

No Mas Coach: [Getting Tested for Covid 19 on Vacation in Hawaii](#)

The Orange County Register: [Traveling to Hawaii during COVID-19: Requirements and what to know before you go](#)

Travel Pulse: [Could We See a Pandemic-Induced Airline Merger?](#)

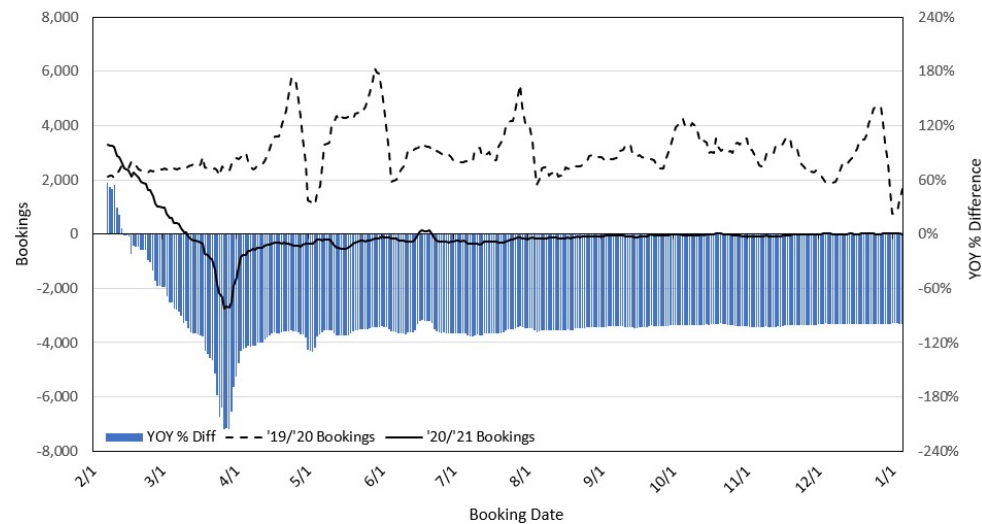
Travel Agency Bookings to Hawaii for Future Arrivals* Based on a 7-day Moving Average, 2021 vs 2020 U.S.



*Future Arrivals refers to all arrivals that are 'future' relative to the referenced booking date.
Source: Global Agency Pro

Update: Jan 5, 2021

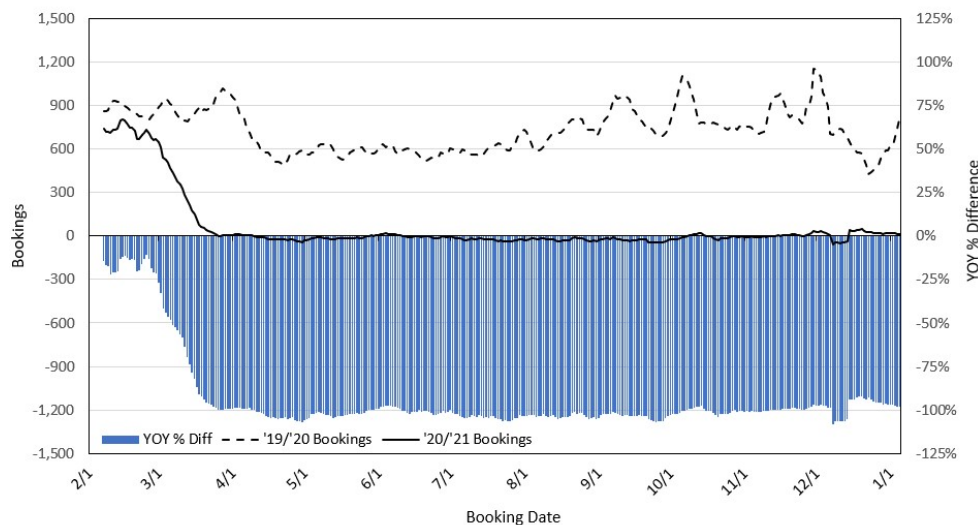
Travel Agency Bookings to Hawaii for Future Arrivals* Based on a 7-day Moving Average, 2020 vs 2019 Japan



*Future Arrivals refers to all arrivals that are 'future' relative to the referenced booking date.
Source: Global Agency Pro

Update: Jan 5, 2021

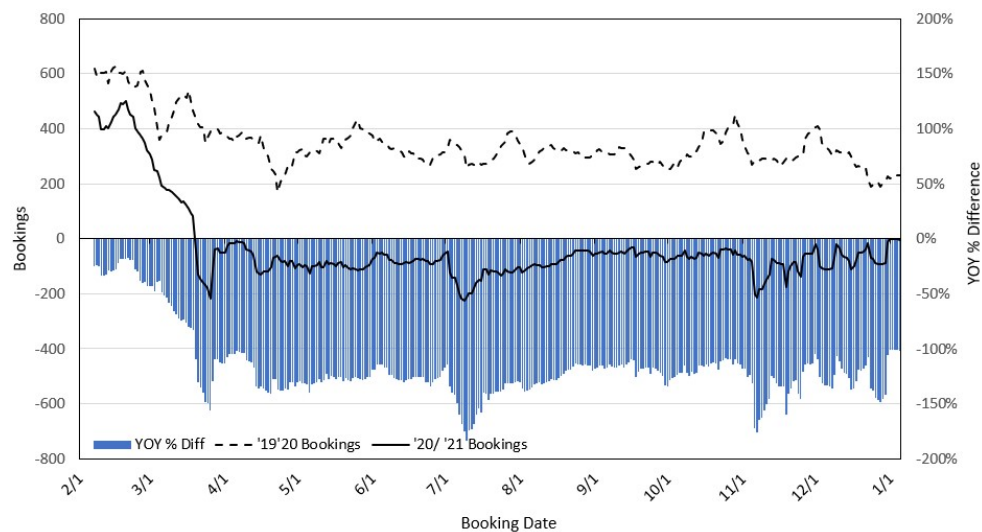
Travel Agency Bookings to Hawaii for Future Arrivals* Based on a 7-day Moving Average, 2020 vs 2019 Canada



*Future Arrivals refers to all arrivals that are 'future' relative to the referenced booking date.
Source: Global Agency Pro

Update: Jan 5, 2021

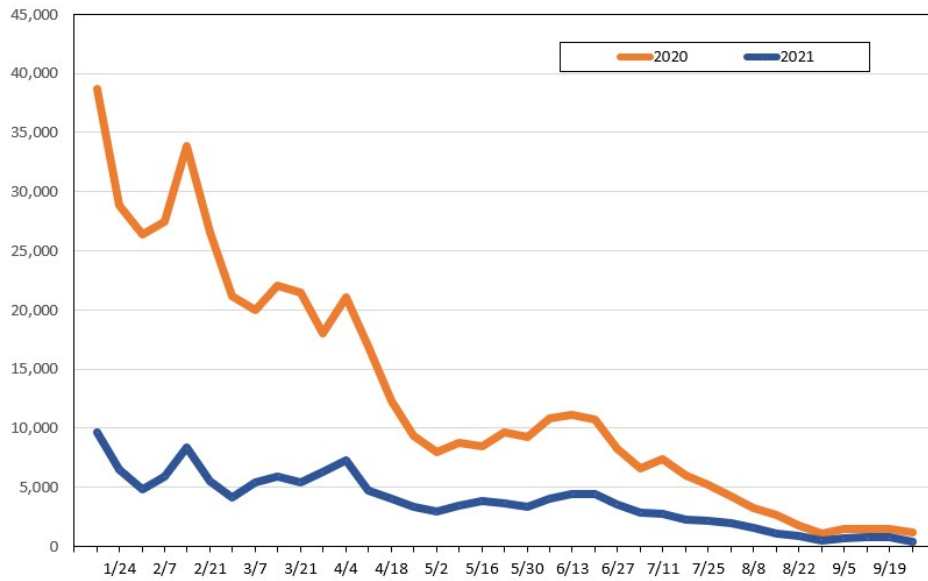
Travel Agency Bookings to Hawaii for Future Arrivals* Based on a 7-day Moving Average, 2020 vs 2019 Australia



*Future Arrivals refers to all arrivals that are 'future' relative to the referenced booking date.
Source: Global Agency Pro

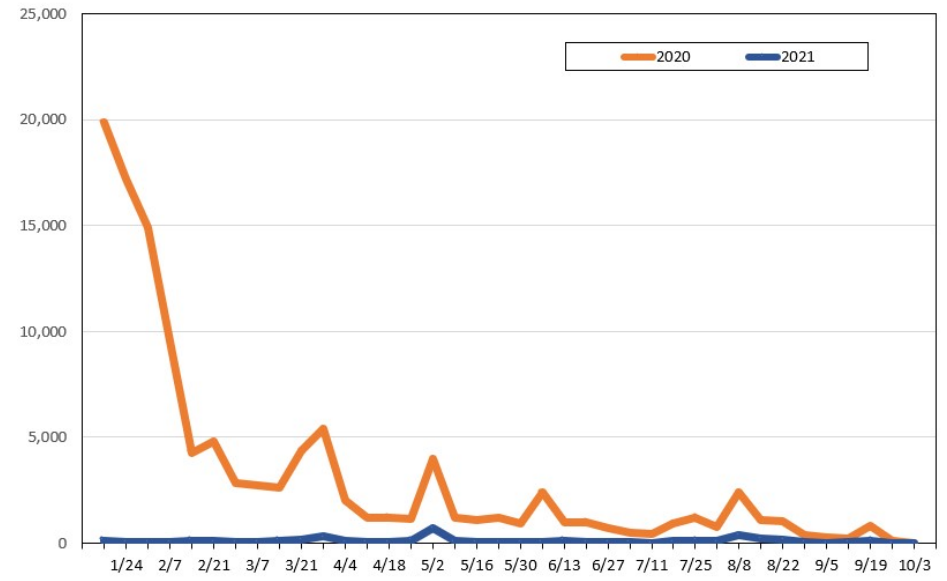
Update: Jan 5, 2021

Travel Agency Weekly Bookings for Future Travel to Hawai'i as of January 5, 2021
U.S.



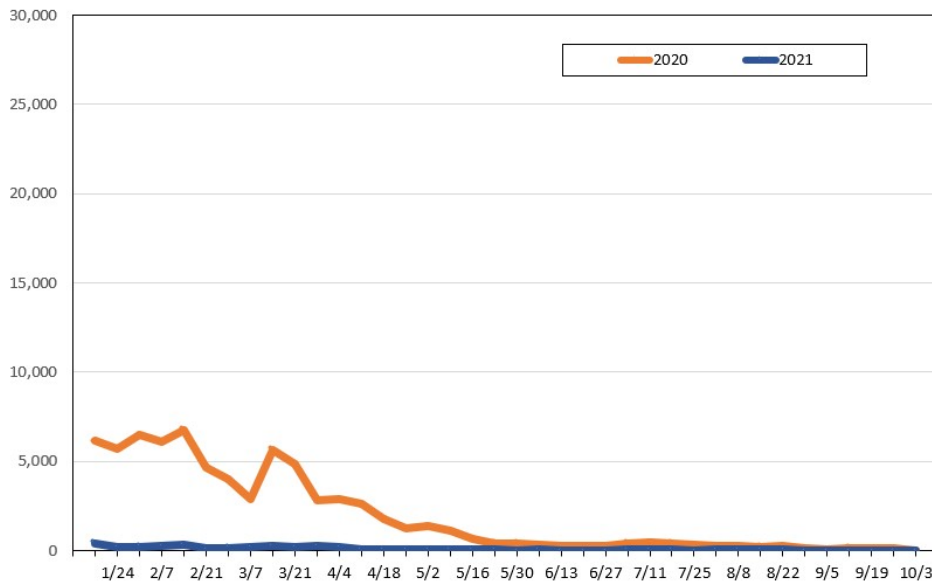
Source: Global Agency Pro, as of January 5, 2021

Travel Agency Weekly Bookings for Future Travel to Hawai'i as of January 5, 2021
Japan



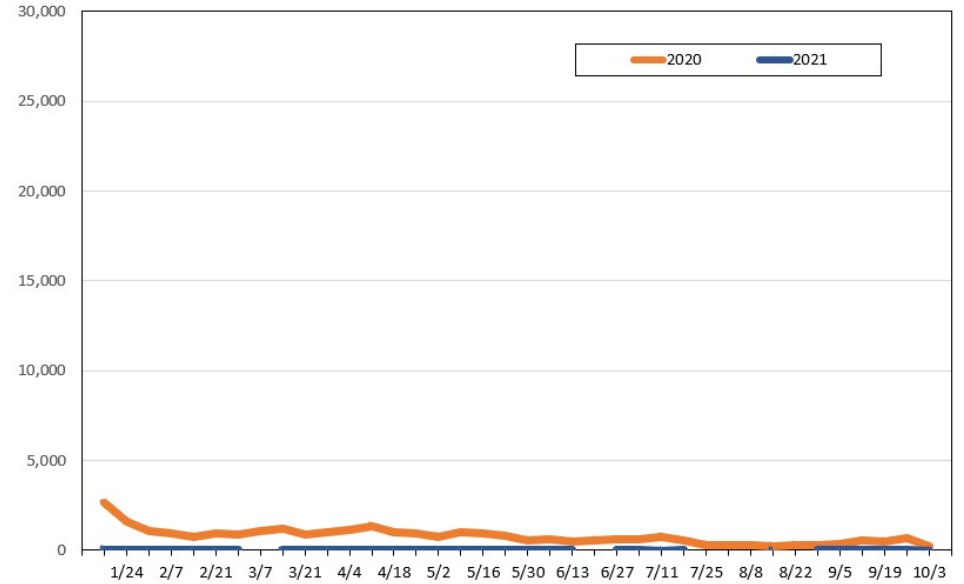
Source: Global Agency Pro, as of January 5, 2021

Travel Agency Weekly Bookings for Future Travel to Hawai'i as of January 5, 2021
Canada



Source: Global Agency Pro, as of January 5, 2021

Travel Agency Weekly Bookings for Future Travel to Hawai'i as of January 5, 2021
Australia



Source: Global Agency Pro, as of January 5, 2021