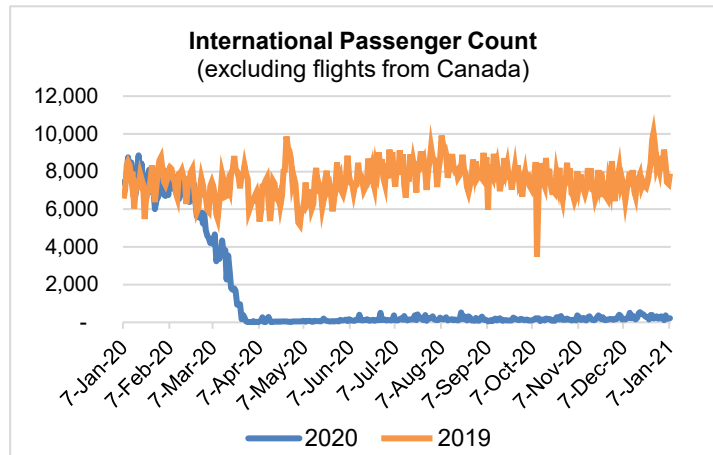
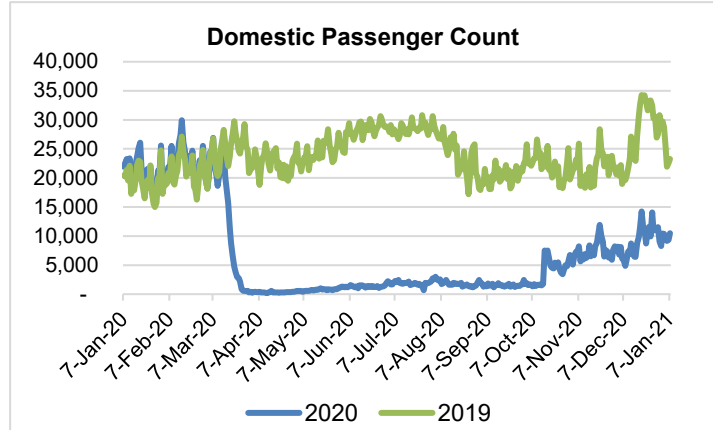
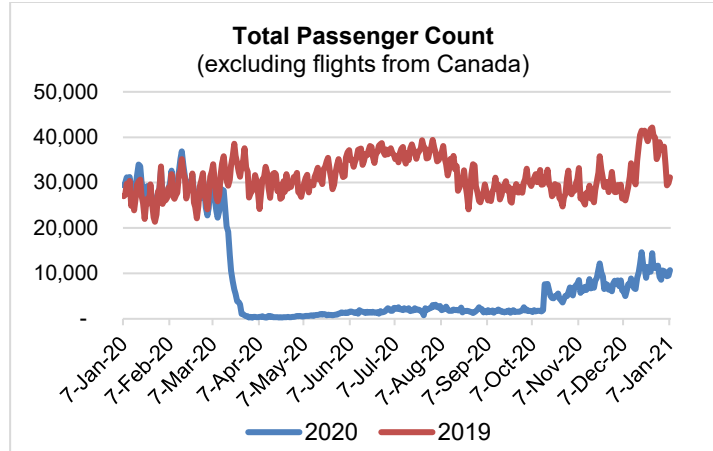


HTA COVID-19 UPDATE

(Issued: 1/8/21 @ 4:30pm)

Reason for Trip by Arrival Airport - Transpacific Screened Passengers as of 01/07/21	Honolulu (HNL)	Kahului (OGG)	Kona (KOA)	Lihue (LIH)	Grand Total
Airline Crew	435	161	105	13	714
Connecting Flight (Transit)	389	16	13	2	420
Corporate Meeting	6	0	2	0	8
Essential Worker	122	15	12	2	151
Honeymoon	5	10	5	0	20
Incentive Trip	3	1	1	0	5
Intended Resident	151	40	25	1	217
Military or Federal Government	266	1	2	0	269
Other	70	37	37	0	144
Other Business	70	37	17	1	125
Pleasure/Vacation	1,974	1,992	771	19	4,756
Returning Resident	1,619	278	237	46	2,180
Sports Event	25	0	0	0	25
To Attend School	278	1	216	0	495
To Get Married	5	2	2	0	9
Transit	0	4	0	0	4
Visiting Friends or Relatives	951	278	231	18	1,478
Grand Total	6,369	2,873	1,676	102	11,020

Source: Safe Travels program developed by the State of Hawaii Office of Enterprise Technology Services
Note: The data is preliminary and subject to change



Daily Passenger Count Table

01/07/2021	Domestic	International	Total
Oahu	6465	222	6687
Maui	2557		2557
Island of Hawaii	1420		1420
Kauai	34		34
State	10476	222	10698

Novel Coronavirus in Hawaii

COVID-19 Positive Cases

Cumulative totals as of 12:00pm on January 8, 2021

Total Confirmed Cases	22,895* (264 new)
Hawaii	1,974
Kauai	157
Lanai	106
Maui	1197†
Molokai	25
Oahu	18,913
Out of State	523
Pending	0
Required Hospitalization	1531‡
Hawaii Deaths	303
Cases in the past 14 days	1,950**

Footnotes for COVID-19 Cases

*As a result of updated information, one case on Maui was recategorized to Oahu.

**Using cases reported in the past 14 days provides a rough approximation of the number of cases currently meeting criteria for isolation. This proxy number for "active cases" resolves classification issues for cases unable to be reached or who are out of jurisdiction, for whom precise release from isolation date may not be possible to determine. It is also not influenced by lags in data entry. (This total does not include Hawaii residents diagnosed outside of Hawaii)

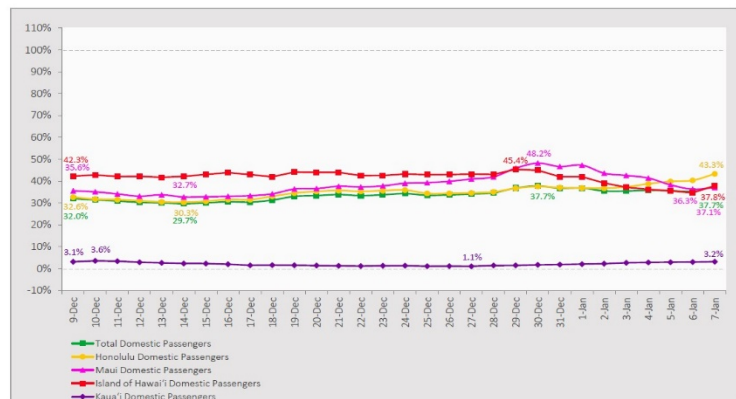
† One case is a Lanai resident whose exposure is on Maui Island and who will be remaining on Maui Island for the interim.

‡Includes Hawaii residents hospitalized out of state.

7-Day Domestic by Island Moving Average Daily Passenger Volume

2021 Volume as Percentage of 2020 Volume

Through January 7, 2021



Source: HVCB analysis based on data from DBEDT

Note: Passenger volume figures include both visitors and residents.

Domestic by Island Month-to-Date and Year-to-Date Daily Passenger Volume

2021 Volume versus 2020 Volume

Through January 7, 2021

January 2021 (Month-to-Date through January 7)

	2021	2020	Volume Change	Percent Change
Honolulu	43,457	107,736	-64,279	-59.7%
Maui County	15,949	44,487	-28,538	-64.1%
Island of Hawai'i	7,990	23,069	-15,079	-65.4%
Kaua'i	491	17,251	-16,760	-97.2%
Total	67,887	192,543	-124,656	-64.7%

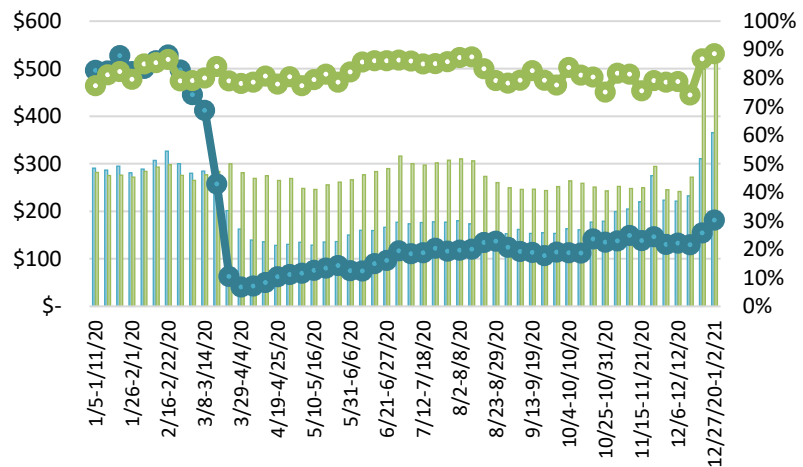
2021 (Year-to-Date through January 7)

	2021	2020	Volume Change	Percent Change
Honolulu	43,457	107,736	-64,279	-59.7%
Maui County	15,949	44,487	-28,538	-64.1%
Island of Hawai'i	7,990	23,069	-15,079	-65.4%
Kaua'i	491	17,251	-16,760	-97.2%
Total	67,887	192,543	-124,656	-64.7%

Source: HVCB analysis based on data from DBEDT

Note: Passenger volume figures include both visitors and residents. Total includes other international passengers.

State of Hawai'i Hotel Performance by Week - 2020 vs 2019



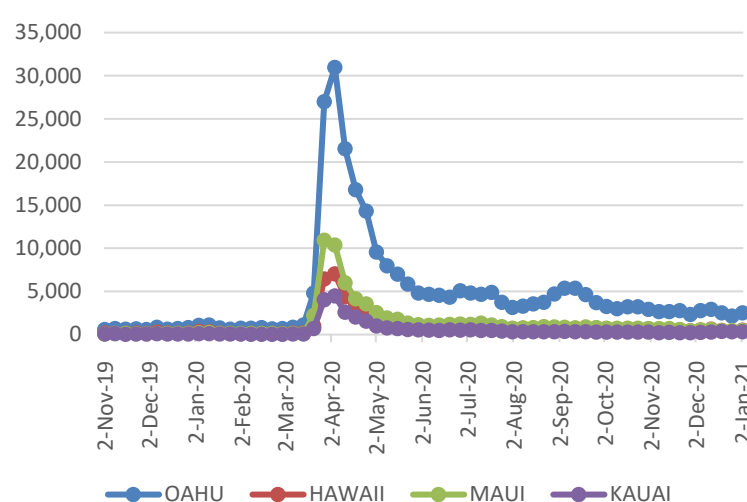
Source: STR, Inc. © Copyright 2021 Hawai'i Tourism Authority

Hawaii Hotel Performance Info:

For the week of December 27 – January 02, 2021

	Occupancy	ADR	RevPAR
State of Hawaii	30.2%	\$ 365.49	\$ 110.33
Oahu	30.8%	\$ 216.01	\$ 66.46
Maui County	30.8%	\$ 666.33	\$ 205.04
Kauai County	13.3%	\$ 205.39	\$ 27.22
Island of Hawaii	36.8%	\$ 442.00	\$ 162.47

2020 Initial Weekly Unemployment Claims by Island



Weekly Unemployment Initial Claims: January 02, 2021

State of Hawaii	4,008
C&C of Oahu	2,529
Hawaii County	539
Maui County	488
Kauai County	326
Agent (filed in Hawaii against another state)	126

News Highlights

January 8, 2021

Hawaii News Now: [Hawaii has at least 1 case of South African COVID-19 strain, Lt. Gov. Josh Green says](#)

KITV4: [Tourism leads to less pessimistic tax forecast for Hawaii](#)

The Maui News: [Maui County hits a grim record for daily COVID cases](#)

The Garden Island: [Two new cases of COVID-19 announced Thursday](#)

West Hawaii Today: [Eighteen new COVID-19 cases brings Hawaii Island tally to 1,964](#)

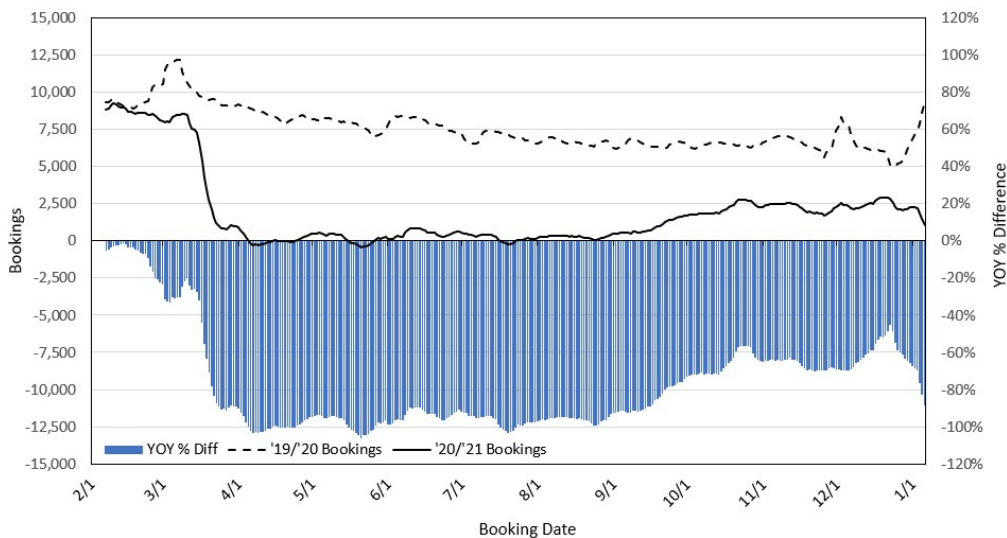
Forbes: [January U.S. Travel Restrictions By State—Quarantine And Covid-19 Test Requirements As Pandemic Surges](#)

AAA Go: [Island Time: A Family Friendly Hawaii Getaway](#)

Fox News: [Kauai reopening to tourists following coronavirus surge](#)

Travel Pulse: [US Travel Explains How Industry Can Take Advantage of COVID-19 Relief Bill](#)

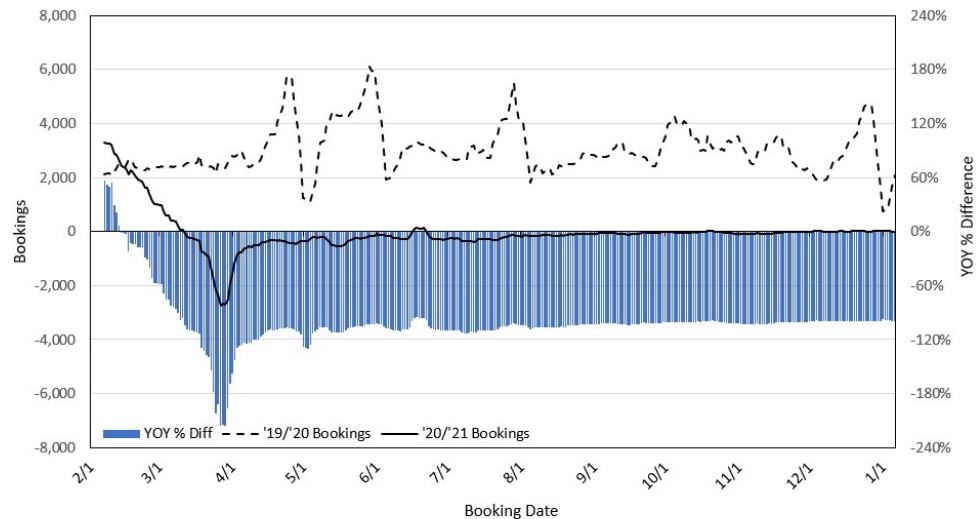
Travel Agency Bookings to Hawaii for Future Arrivals* Based on a 7-day Moving Average, 2021 vs 2020 U.S.



*Future Arrivals refers to all arrivals that are 'future' relative to the referenced booking date.
Source: Global Agency Pro

Update: Jan 6, 2021

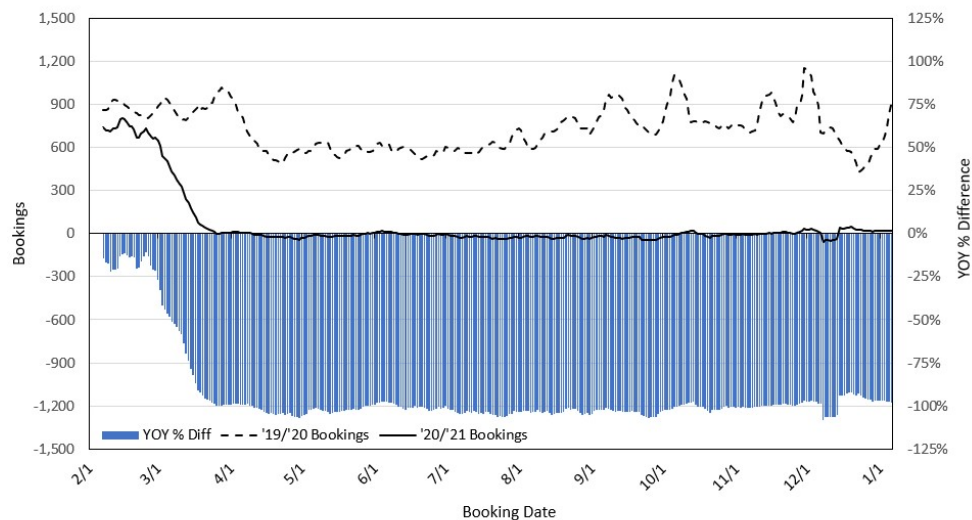
Travel Agency Bookings to Hawaii for Future Arrivals* Based on a 7-day Moving Average, 2020 vs 2019 Japan



*Future Arrivals refers to all arrivals that are 'future' relative to the referenced booking date.
Source: Global Agency Pro

Update: Jan 6, 2021

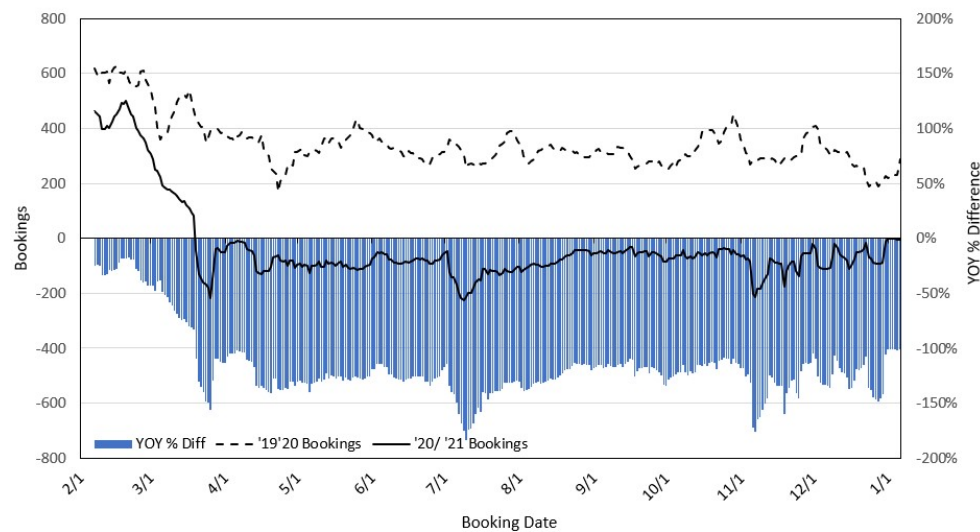
Travel Agency Bookings to Hawaii for Future Arrivals* Based on a 7-day Moving Average, 2020 vs 2019 Canada



*Future Arrivals refers to all arrivals that are 'future' relative to the referenced booking date.
Source: Global Agency Pro

Update: Jan 6, 2021

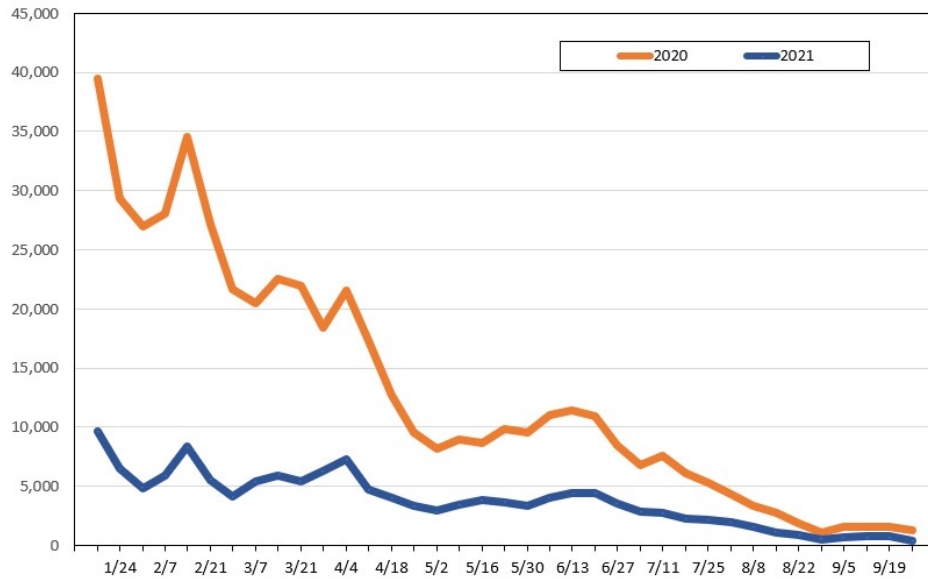
Travel Agency Bookings to Hawaii for Future Arrivals* Based on a 7-day Moving Average, 2020 vs 2019 Australia



*Future Arrivals refers to all arrivals that are 'future' relative to the referenced booking date.
Source: Global Agency Pro

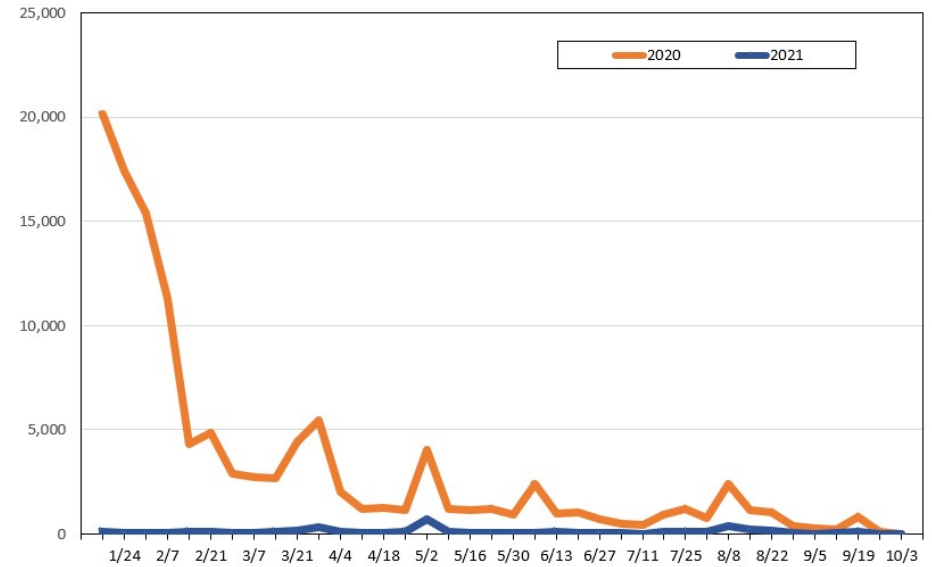
Update: Jan 6, 2021

Travel Agency Weekly Bookings for Future Travel to Hawai'i as of January 6, 2021
U.S.



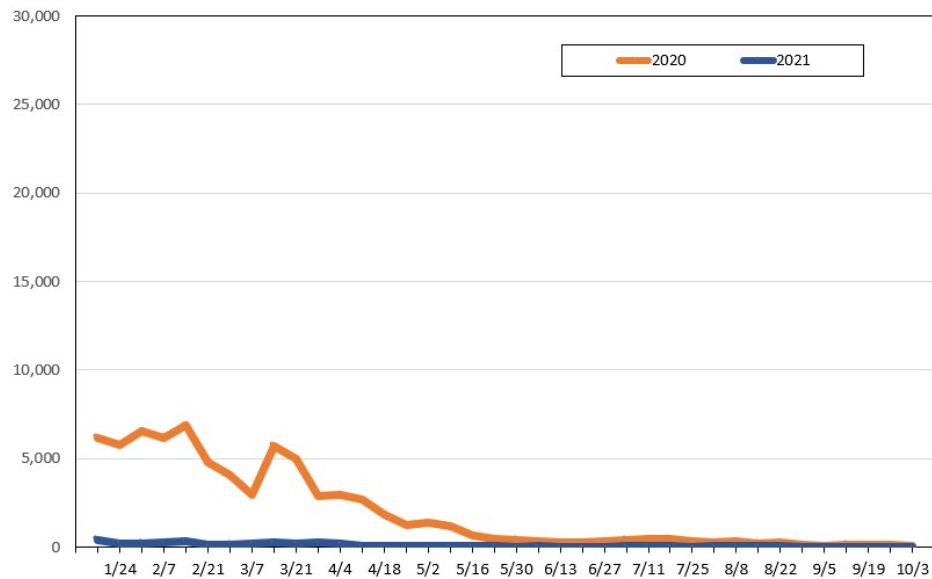
Source: Global Agency Pro, as of January 6, 2021

Travel Agency Weekly Bookings for Future Travel to Hawai'i as of January 6, 2021
Japan



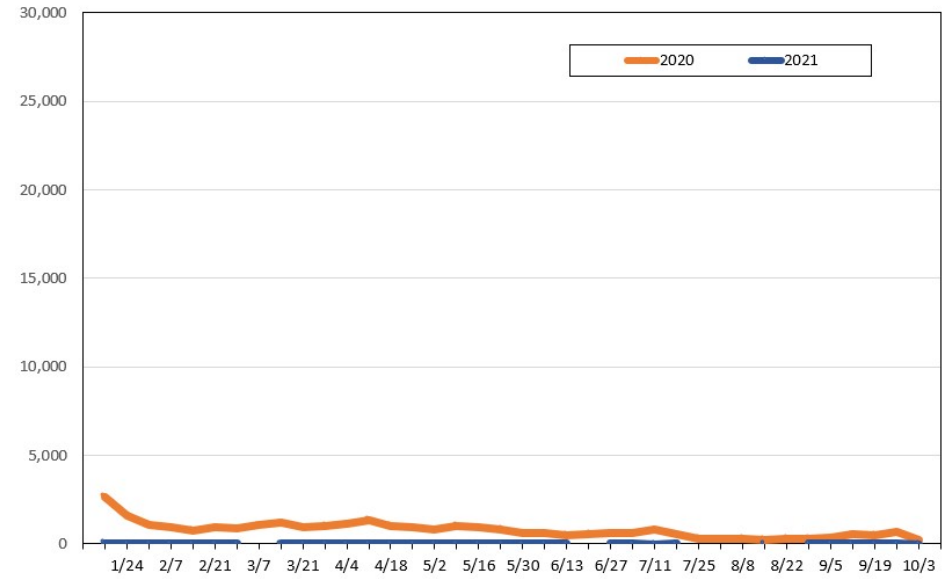
Source: Global Agency Pro, as of January 6, 2021

Travel Agency Weekly Bookings for Future Travel to Hawai'i as of January 6, 2021
Canada



Source: Global Agency Pro, as of January 6, 2021

Travel Agency Weekly Bookings for Future Travel to Hawai'i as of January 6, 2021
Australia



Source: Global Agency Pro, as of January 6, 2021