

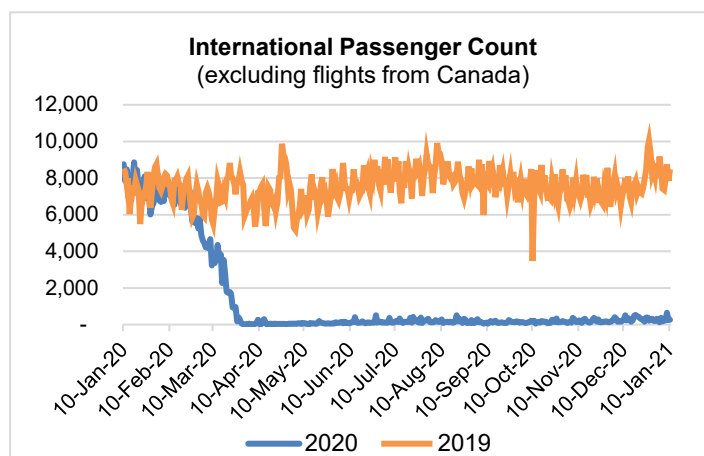
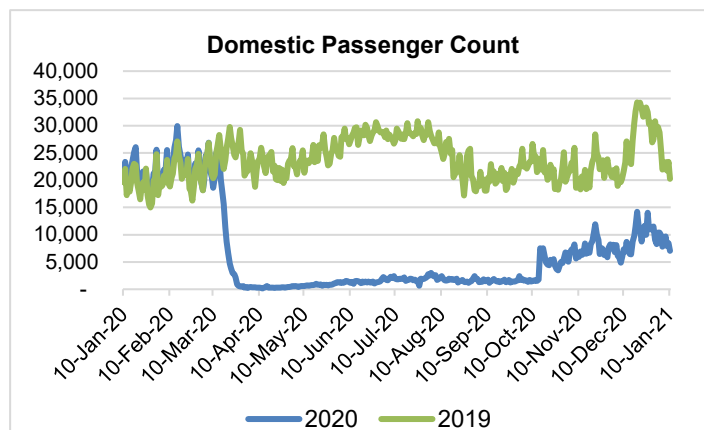
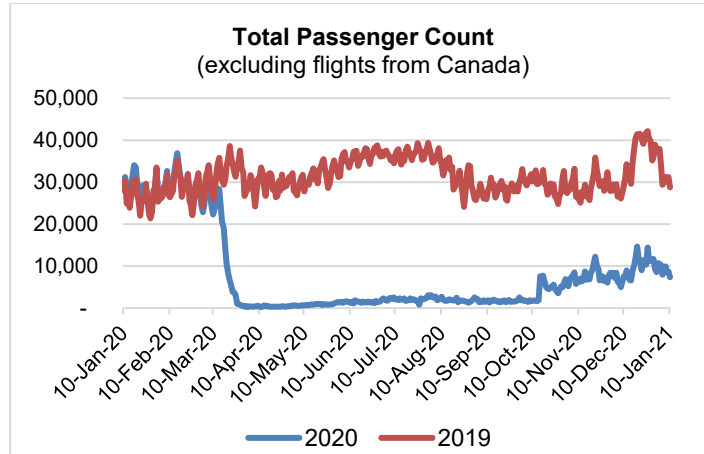
HTA COVID-19 UPDATE

(Issued: 1/11/21 @ 4:30pm)

Reason for Trip by Arrival Airport - Transpacific Screened Passengers as of 01/10/21	Honolulu (HNL)	Kahului (OGG)	Kona (KOA)	Lihue (LIH)	Grand Total
Airline Crew	434	171	98	9	712
Connecting Flight (Transit)	352	10	2	0	364
Corporate Meeting	9	29	0	0	38
Essential Worker	247	31	34	5	317
Honeymoon	14	12	2	0	28
Incentive Trip	4	1	0	0	5
Intended Resident	108	19	26	0	153
Military or Federal Government	213	0	0	2	215
Other	46	6	7	1	60
Other Business	89	33	7	0	129
Pleasure/Vacation	1,153	1,450	529	7	3,139
Returning Resident	1,567	155	113	18	1,853
Sports Event	83	0	2	0	85
To Attend School	196	1	4	0	201
To Get Married	1	0	0	0	1
Visiting Friends or Relatives	476	153	123	5	757
Grand Total	4,992	2,071	947	47	8,057

Source: Safe Travels program developed by the State of Hawaii Office of Enterprise Technology Services

Note: The data is preliminary and subject to change



Daily Passenger Count Table

01/10/2021	Domestic	International	Total
Oahu	4471	270	4741
Maui	1796		1796
Island of Hawaii	773		773
Kauai	36		36
State	7076	270	7346

Novel Coronavirus in Hawaii

COVID-19 Positive Cases

Cumulative totals as of 12:00pm on January 11, 2021

Total Confirmed Cases	23,513* (174 new)
Hawaii	2,026
Kauai	167
Lanai	106
Maui	1310†
Molokai	25
Oahu	19,306
Out of State	573
Pending	0
Required Hospitalization	1560‡
Hawaii Deaths	309
Cases in the past 14 days	2,268*

Footnotes for COVID-19 Cases

*As a result of updated information, one case on Maui was recategorized to Oahu.

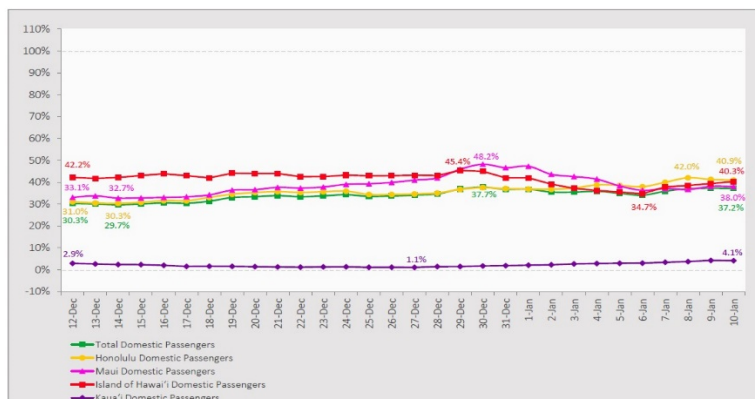
**Using cases reported in the past 14 days provides a rough approximation of the number of cases currently meeting criteria for isolation. This proxy number for "active cases" resolves classification issues for cases unable to be reached or who are out of jurisdiction, for whom precise release from isolation date may not be possible to determine. It is also not influenced by lags in data entry. (This total does not include Hawaii residents diagnosed outside of Hawaii)

† One case is a Lanai resident whose exposure is on Maui Island and who will be remaining on Maui Island for the interim.

‡Includes Hawaii residents hospitalized out of state.

7-Day Domestic by Island Moving Average Daily Passenger Volume

2021 Volume as Percentage of 2020 Volume
Through January 10, 2021



Source: HVCB analysis based on data from DBEDT
Note: Passenger volume figures include both visitors and residents.

Domestic by Island Month-to-Date and Year-to-Date Daily Passenger Volume

2021 Volume versus 2020 Volume
Through January 10, 2021

January 2021 (Month-to-Date through January 10)

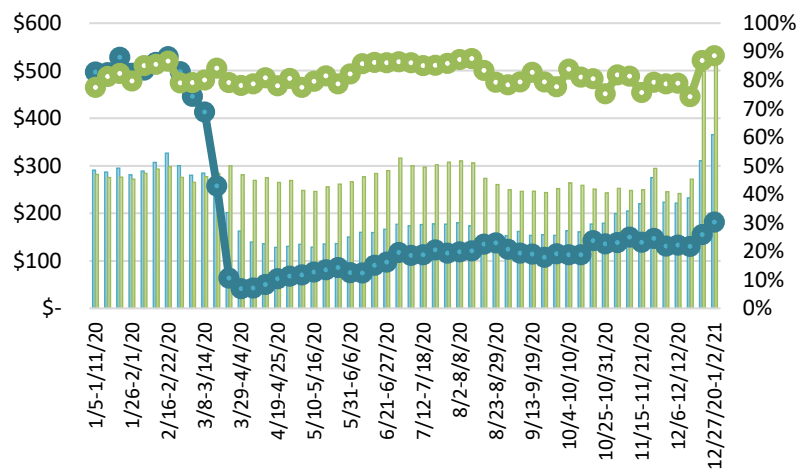
	2021	2020	Volume Change	Percent Change
Honolulu	53,682	144,723	-91,041	-62.9%
Maui County	22,548	61,399	-38,851	-63.3%
Island of Hawai'i	11,026	31,326	-20,300	-64.8%
Kaua'i	744	22,721	-21,977	-96.7%
Total	88,000	260,169	-172,169	-66.2%

2021 (Year-to-Date through January 10)

	2021	2020	Volume Change	Percent Change
Honolulu	53,682	144,723	-91,041	-62.9%
Maui County	22,548	61,399	-38,851	-63.3%
Island of Hawai'i	11,026	31,326	-20,300	-64.8%
Kaua'i	744	22,721	-21,977	-96.7%
Total	88,000	260,169	-172,169	-66.2%

Source: HVCB analysis based on data from DBEDT
Note: Passenger volume figures include both visitors and residents. Total includes other international passengers.

State of Hawai'i Hotel Performance by Week - 2020 vs 2019



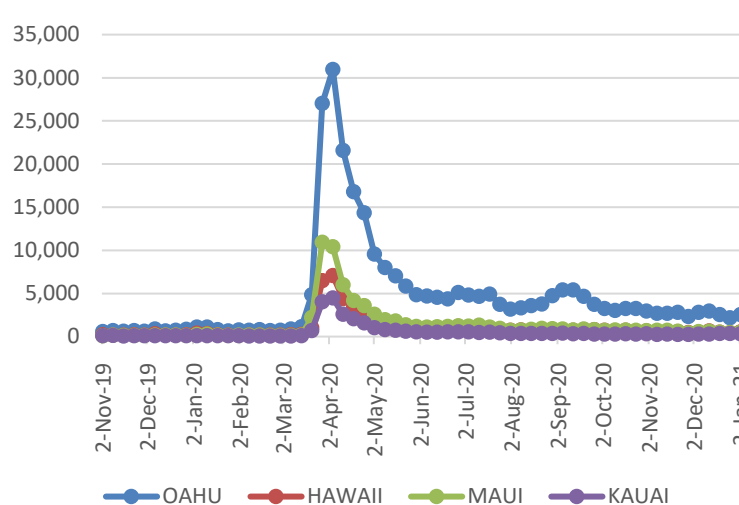
Source: STR, Inc. © Copyright 2021 Hawai'i Tourism Authority

Hawaii Hotel Performance Info:

For the week of December 27 – January 02, 2021

	Occupancy	ADR	RevPAR
State of Hawaii	30.2%	\$ 365.49	\$ 110.33
Oahu	30.8%	\$ 216.01	\$ 66.46
Maui County	30.8%	\$ 666.33	\$ 205.04
Kauai County	13.3%	\$ 205.39	\$ 27.22
Island of Hawaii	36.8%	\$ 442.00	\$ 162.47

2020 Initial Weekly Unemployment Claims by Island



Weekly Unemployment Initial Claims: January 02, 2021

State of Hawaii	4,008
C&C of Oahu	2,529
Hawaii County	539
Maui County	488
Kauai County	326
Agent (filed in Hawaii against another state)	126

News Highlights

January 11, 2021

Honolulu Star Advertiser: [Hawaii Tourism Authority to sponsor 3 Big West championships](#)

Honolulu Star Advertiser: [Hawaii reports 2 coronavirus-related deaths and 200 new infections](#)

The Maui News: [80 new cases reported over weekend](#)

Big Island Now: [COVID Surge Continues, as Big Island Tops 2,000 Confirmed Cases](#)

Calgary Herald: [Thousands have flown to Hawaii from Calgary](#)

Pacific Business News: [Work from Hawaii](#)

ABC7 San Francisco: [Traveler forced to quarantine in Hawaii despite negative COVID-19 test](#)

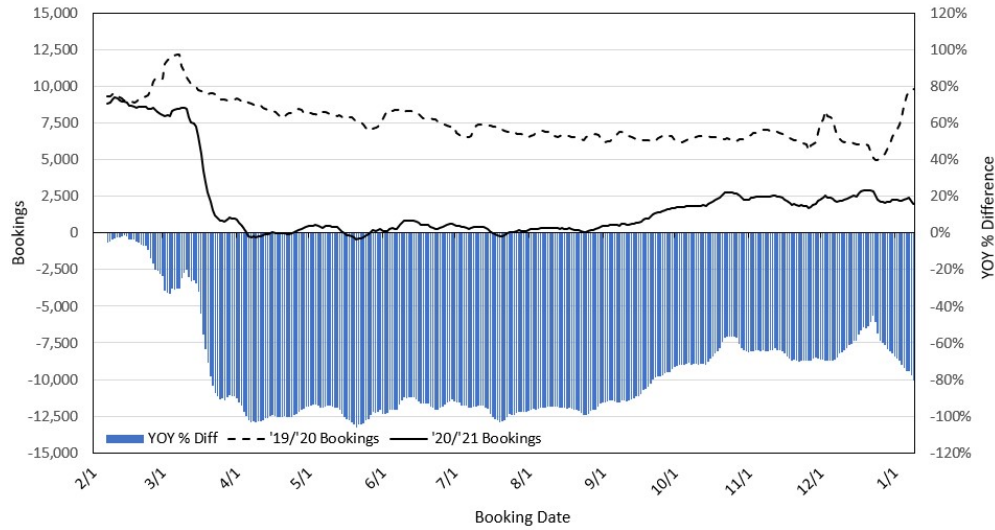
Travel Pulse: [Hawaii to Consider Uniform COVID-19 Travel Restrictions](#)

Travel Weekly: [Chasing pandemic revenue, low-cost airlines expand in major cities](#)

USA Today: [COVID-19 travel restrictions by state: See testing, quarantine requirements](#)

USA Today: [Latest Hawaii travel restrictions: What you need to know](#)

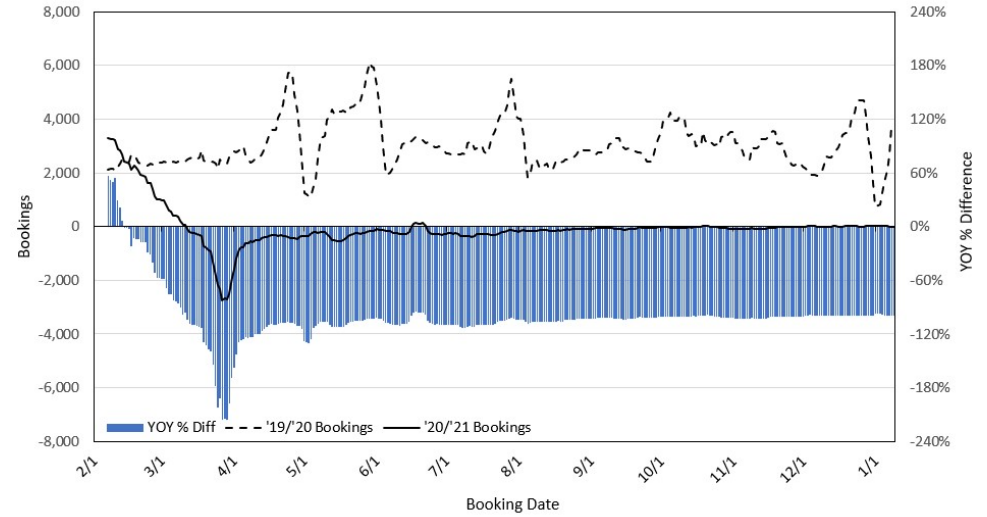
Travel Agency Bookings to Hawaii for Future Arrivals* Based on a 7-day Moving Average, 2021 vs 2020 U.S.



*Future Arrivals refers to all arrivals that are 'future' relative to the referenced booking date.
Source: Global Agency Pro

Update: Jan 9, 2021

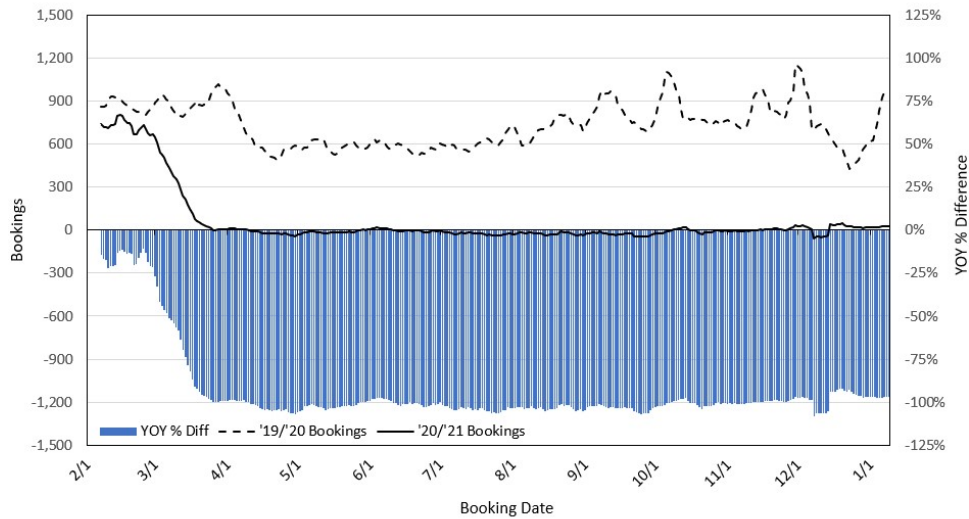
Travel Agency Bookings to Hawaii for Future Arrivals* Based on a 7-day Moving Average, 2020 vs 2019 Japan



*Future Arrivals refers to all arrivals that are 'future' relative to the referenced booking date.
Source: Global Agency Pro

Update: Jan 9, 2021

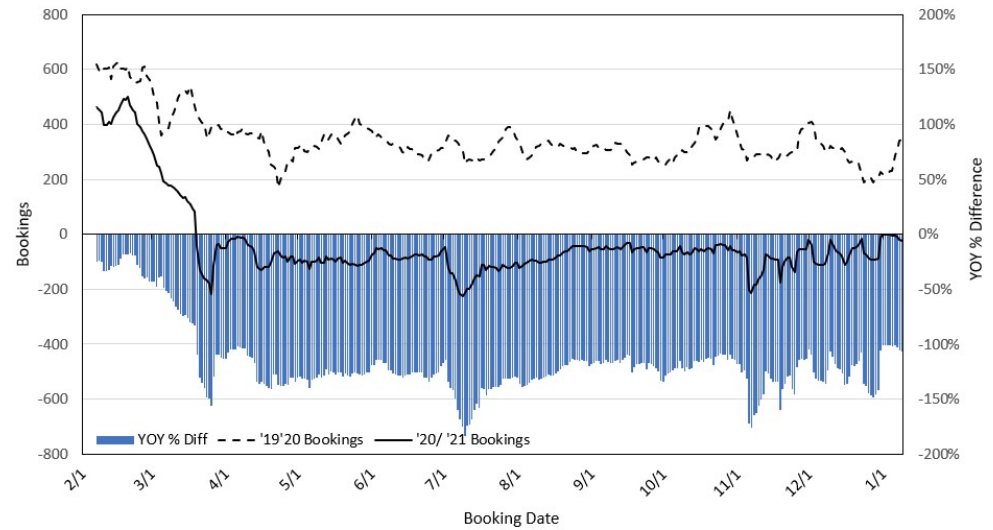
Travel Agency Bookings to Hawaii for Future Arrivals* Based on a 7-day Moving Average, 2020 vs 2019 Canada



*Future Arrivals refers to all arrivals that are 'future' relative to the referenced booking date.
Source: Global Agency Pro

Update: Jan 9, 2021

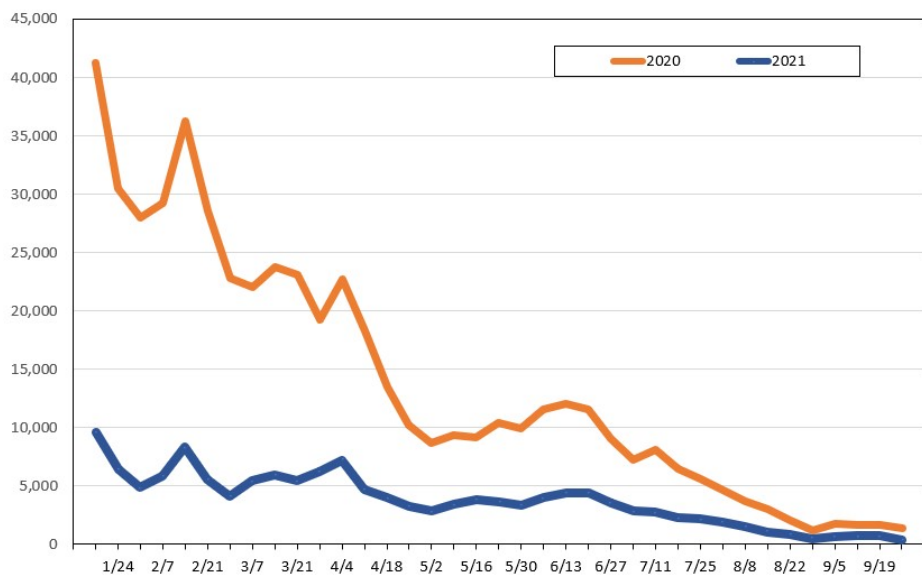
Travel Agency Bookings to Hawaii for Future Arrivals* Based on a 7-day Moving Average, 2020 vs 2019 Australia



*Future Arrivals refers to all arrivals that are 'future' relative to the referenced booking date.
Source: Global Agency Pro

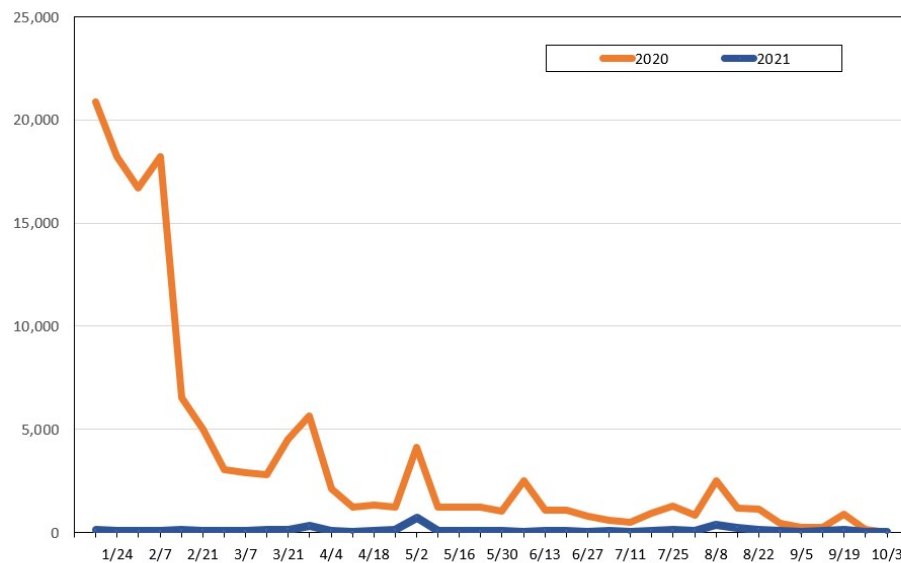
Update: Jan 9, 2021

Travel Agency Weekly Bookings for Future Travel to Hawai'i as of January 9, 2021
U.S.



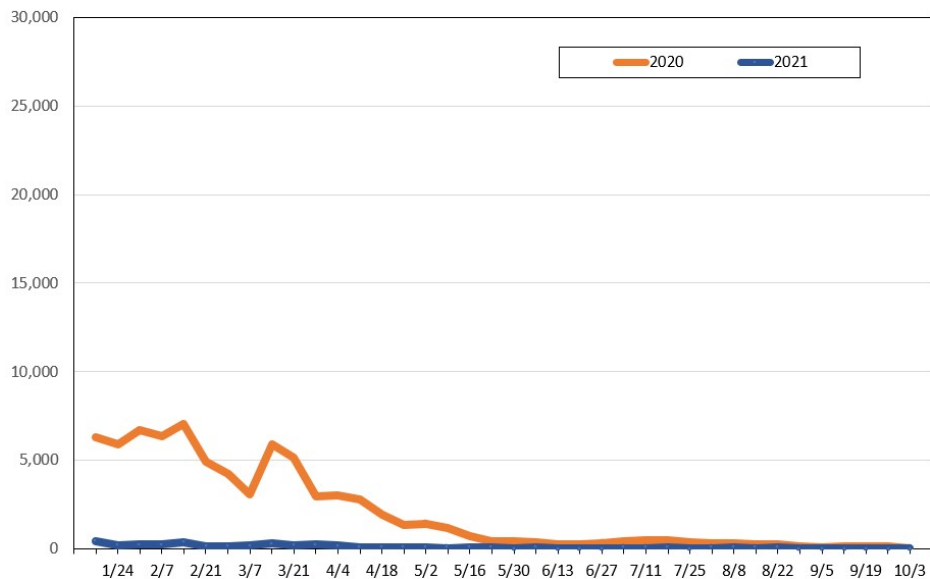
Source: Global Agency Pro, as of January 9, 2021

Travel Agency Weekly Bookings for Future Travel to Hawai'i as of January 9, 2021
Japan



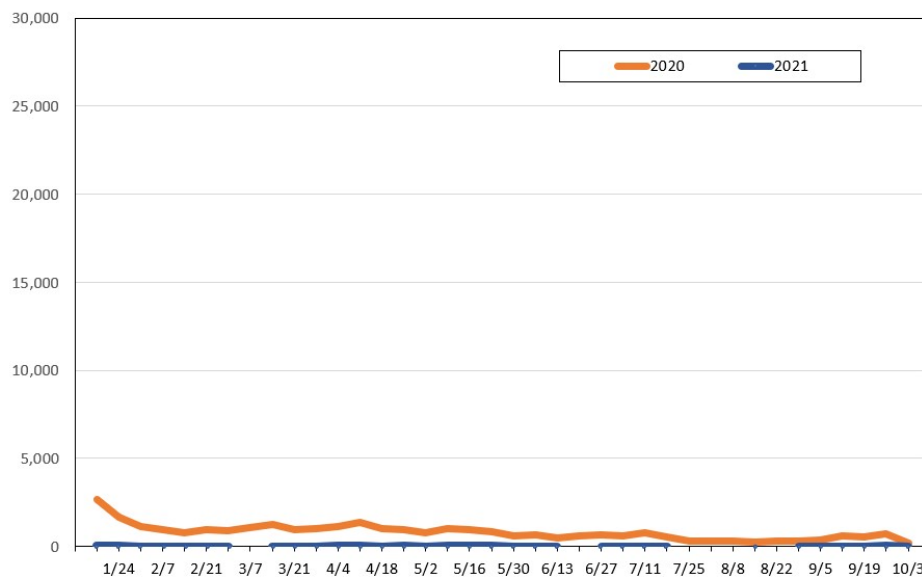
Source: Global Agency Pro, as of January 9, 2021

Travel Agency Weekly Bookings for Future Travel to Hawai'i as of January 9, 2021
Canada



Source: Global Agency Pro, as of January 9, 2021

Travel Agency Weekly Bookings for Future Travel to Hawai'i as of January 9, 2021
Australia



Source: Global Agency Pro, as of January 9, 2021