

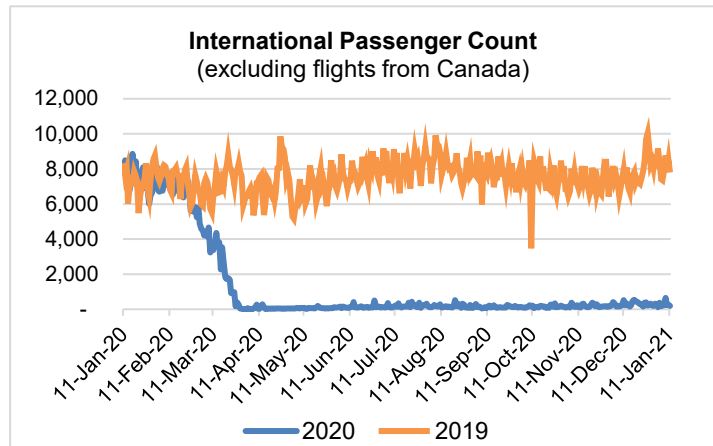
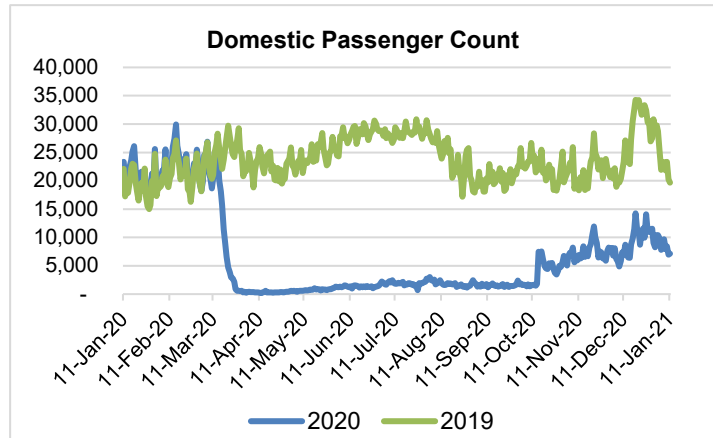
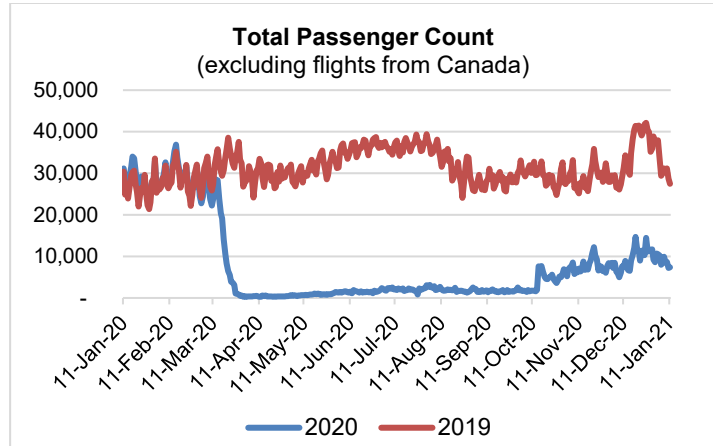
HTA COVID-19 UPDATE

(Issued: 1/12/21 @ 4:30pm)

Reason for Trip by Arrival Airport - Transpacific Screened Passengers as of 01/11/21	Honolulu (HNL)	Kahului (OGG)	Kona (KOA)	Lihue (LIH)	Grand Total
Airline Crew	371	167	98	7	643
Connecting Flight (Transit)	278	10	0	0	288
Corporate Meeting	2	1	0	0	3
Essential Worker	138	25	21	2	186
Honeymoon	11	7	5	2	25
Incentive Trip	1	4	3	1	9
Intended Resident	122	26	20	1	169
Military or Federal Government	124	3	0	0	127
Other	49	17	12	0	78
Other Business	77	21	9	2	109
Pleasure/Vacation	1,303	1,221	579	12	3,115
Returning Resident	1,140	167	173	37	1,517
Sports Event	25	0	1	0	26
To Attend School	53	2	5	0	60
To Get Married	4	6	0	0	10
Visiting Friends or Relatives	574	142	141	20	877
Grand Total	4,272	1,819	1,067	84	7,242

Source: Safe Travels program developed by the State of Hawaii Office of Enterprise Technology Services

Note: The data is preliminary and subject to change



Daily Passenger Count Table

01/11/2021	Domestic	International	Total
Oahu	4644	197	4841
Maui	1560		1560
Island of Hawaii	897		897
Kauai	54		54
State	7155	197	7352

Novel Coronavirus in Hawaii

COVID-19 Positive Cases

Cumulative totals as of 12:00pm on January 12, 2021

Total Confirmed Cases	23,627* (114 new)
Hawaii	2,030
Kauai	167
Lanai	106
Maui	1331†
Molokai	25
Oahu	19,389
Out of State	579
Pending	0
Required Hospitalization	1561‡
Hawaii Deaths	309
Cases in the past 14 days	2,305*

Footnotes for COVID-19 Cases

*

**Using cases reported in the past 14 days provides a rough approximation of the number of cases currently meeting criteria for isolation. This proxy number for "active cases" resolves classification issues for cases unable to be reached or who are out of jurisdiction, for whom precise release from isolation date may not be possible to determine. It is also not influenced by lags in data entry. (This total does not include Hawaii residents diagnosed outside of Hawaii)

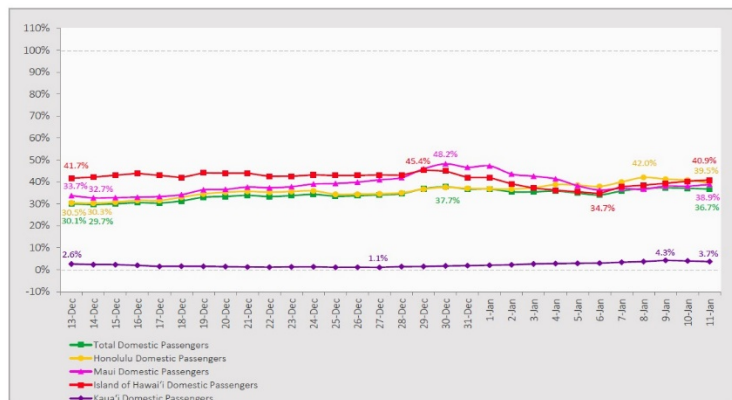
†One case is a Lanai resident whose exposure is on Maui Island and who will be remaining on Maui Island for the interim.

‡Includes Hawaii residents hospitalized out of state.

§Includes cases that meet isolation release criteria (Isolation should be maintained until at least 24 hours after resolution of fever and myalgia without the use of antipyretics OR at least 10 days have passed since symptom onset, whichever is longer). (The cases that have died and one case that has left the jurisdiction have been removed from these counts). Positive cases include confirmed cases, and Hawaii residents and non-residents; data are preliminary and subject to change. Note that CDC provides case counts according to states of residence.

7-Day Domestic by Island Moving Average Daily Passenger Volume

2021 Volume as Percentage of 2020 Volume
Through January 11, 2021



Source: HVCB analysis based on data from DBEDT
Note: Passenger volume figures include both visitors and residents.

Domestic by Island Month-to-Date and Year-to-Date Daily Passenger Volume

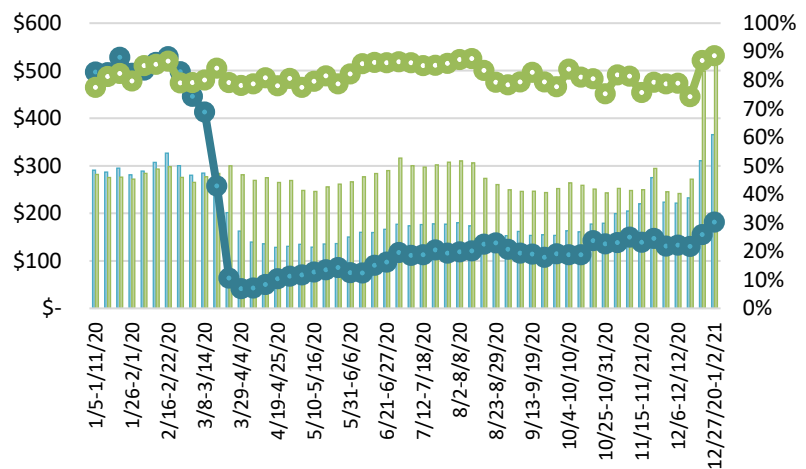
2021 Volume versus 2020 Volume
Through January 11, 2021

January 2021 (Month-to-Date through January 11)				
	2021	2020	Volume Change	Percent Change
Honolulu	58,223	156,966	-98,743	-62.9%
Maui County	24,108	67,883	-43,775	-64.5%
Island of Hawai'i	11,923	34,439	-22,516	-65.4%
Kaua'i	783	24,241	-23,458	-96.8%
Total	95,037	283,529	-188,492	-66.5%

2021 (Year-to-Date through January 11)				
	2021	2020	Volume Change	Percent Change
Honolulu	58,223	156,966	-98,743	-62.9%
Maui County	24,108	67,883	-43,775	-64.5%
Island of Hawai'i	11,923	34,439	-22,516	-65.4%
Kaua'i	783	24,241	-23,458	-96.8%
Total	95,037	283,529	-188,492	-66.5%

Source: HVCB analysis based on data from DBEDT
Note: Passenger volume figures include both visitors and residents. Total includes other international passengers.

State of Hawai'i Hotel Performance by Week - 2020 vs 2019



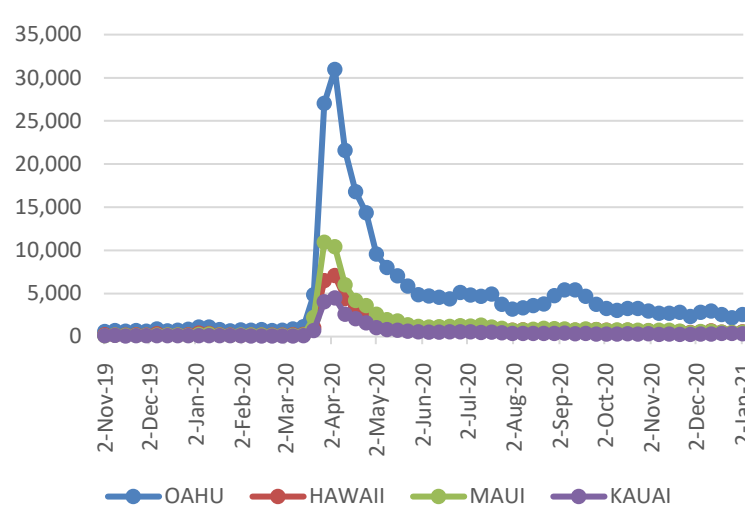
Source: STR, Inc. © Copyright 2021 Hawai'i Tourism Authority

Hawaii Hotel Performance Info:

For the week of December 27 – January 02, 2021

	Occupancy	ADR	RevPAR
State of Hawaii	30.2%	\$ 365.49	\$ 110.33
Oahu	30.8%	\$ 216.01	\$ 66.46
Maui County	30.8%	\$ 666.33	\$ 205.04
Kauai County	13.3%	\$ 205.39	\$ 27.22
Island of Hawaii	36.8%	\$ 442.00	\$ 162.47

2020 Initial Weekly Unemployment Claims by Island



Weekly Unemployment Initial Claims: January 02, 2021

State of Hawaii	4,008
C&C of Oahu	2,529
Hawaii County	539
Maui County	488
Kauai County	326
Agent (filed in Hawaii against another state)	126

News Highlights

January 12, 2021

West Hawaii Today: [Green: Hawaii 'doing OK' despite recent COVID-19 surge](#)

The Maui News: [Hundreds turn out for vaccine drive](#)

The Garden Island: [Utah man documents quarantine violations on TikTok](#)

The Garden Island: [County announces one new case of COVID-19 Monday](#)

Best Life: [This Is the Only State Where COVID Isn't Surging](#)

Travel Pulse: [Hilton CEO Discusses Impact of COVID-19, Plans for Future](#)

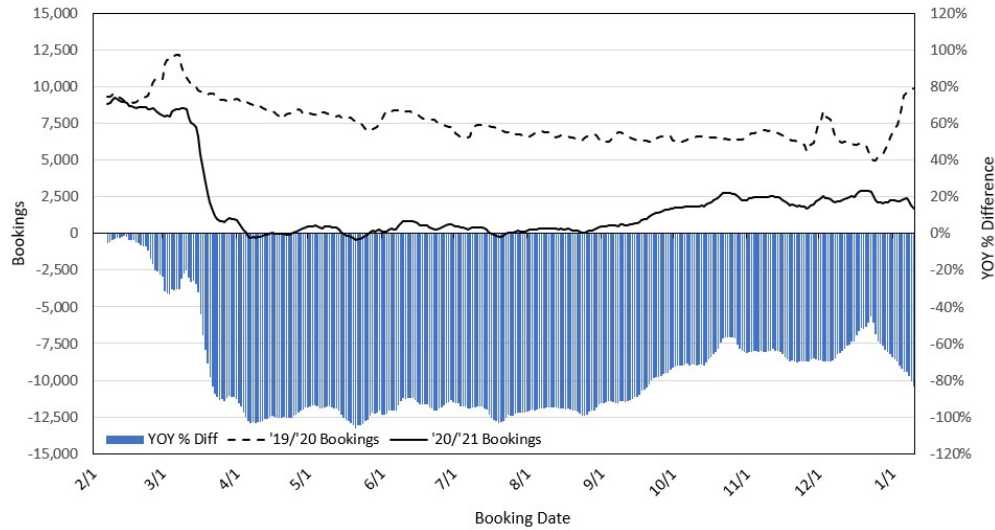
Travel Weekly: [Scattershot Covid rules place travel on uncertain path in '21](#)

USA Today: [100 places we're excited to travel to in 2021 \(when it's safe\)](#)

Fodor's: [Thinking About Traveling Just to Get Vaccinated? You Need to Read This First](#)

Fox News: [5 countries suffering the biggest tourism revenue losses amid the coronavirus pandemic](#)

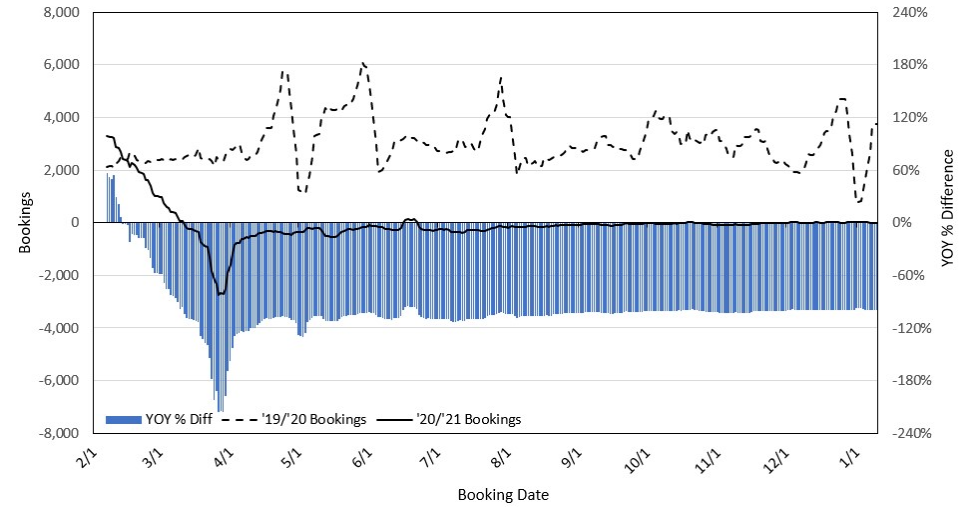
Travel Agency Bookings to Hawaii for Future Arrivals* Based on a 7-day Moving Average, 2021 vs 2020 U.S.



*Future Arrivals refers to all arrivals that are 'future' relative to the referenced booking date.
Source: Global Agency Pro

Update: Jan 10, 2021

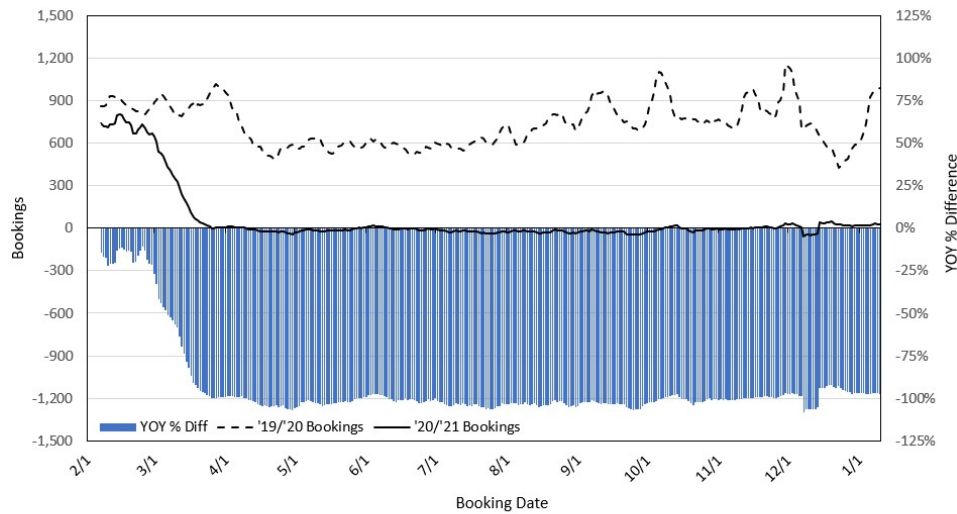
Travel Agency Bookings to Hawaii for Future Arrivals* Based on a 7-day Moving Average, 2020 vs 2019 Japan



*Future Arrivals refers to all arrivals that are 'future' relative to the referenced booking date.
Source: Global Agency Pro

Update: Jan 10, 2021

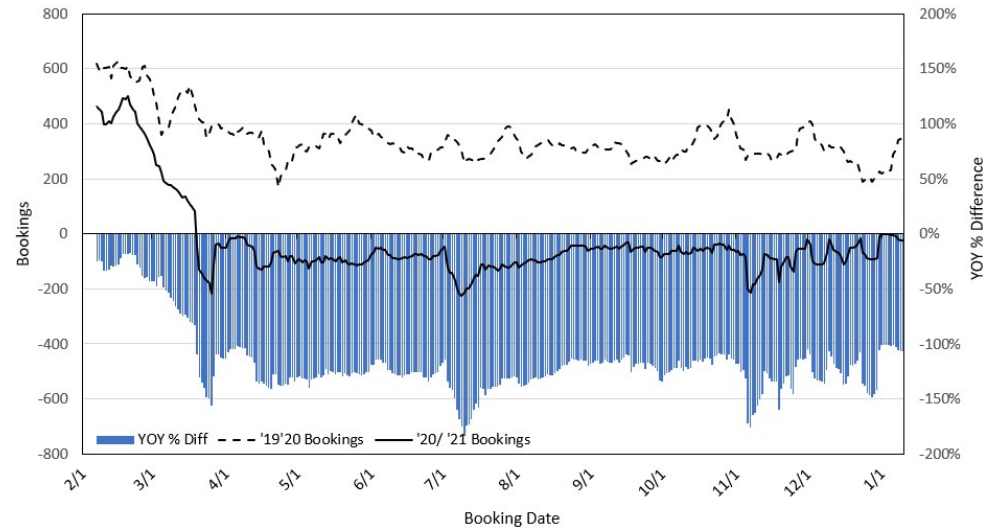
Travel Agency Bookings to Hawaii for Future Arrivals* Based on a 7-day Moving Average, 2020 vs 2019 Canada



*Future Arrivals refers to all arrivals that are 'future' relative to the referenced booking date.
Source: Global Agency Pro

Update: Jan 10, 2021

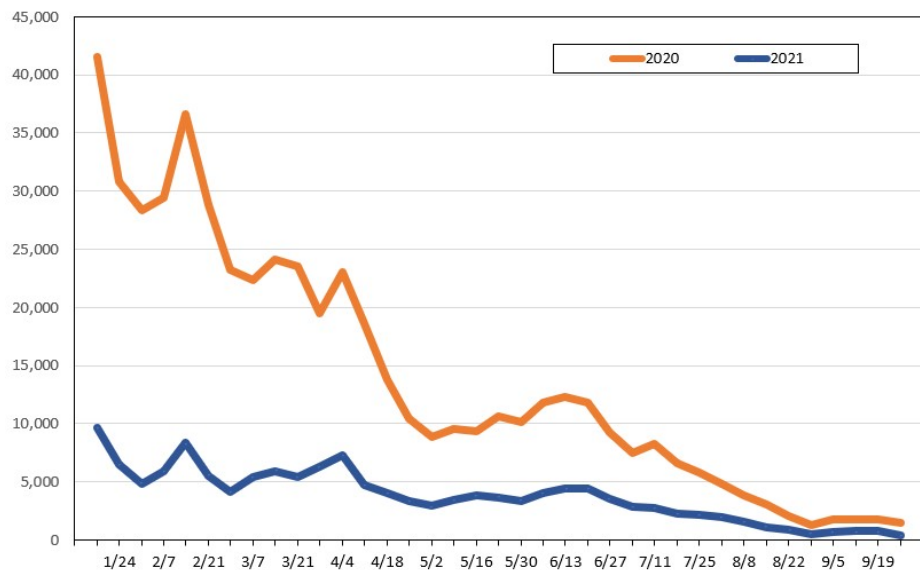
Travel Agency Bookings to Hawaii for Future Arrivals* Based on a 7-day Moving Average, 2020 vs 2019 Australia



*Future Arrivals refers to all arrivals that are 'future' relative to the referenced booking date.
Source: Global Agency Pro

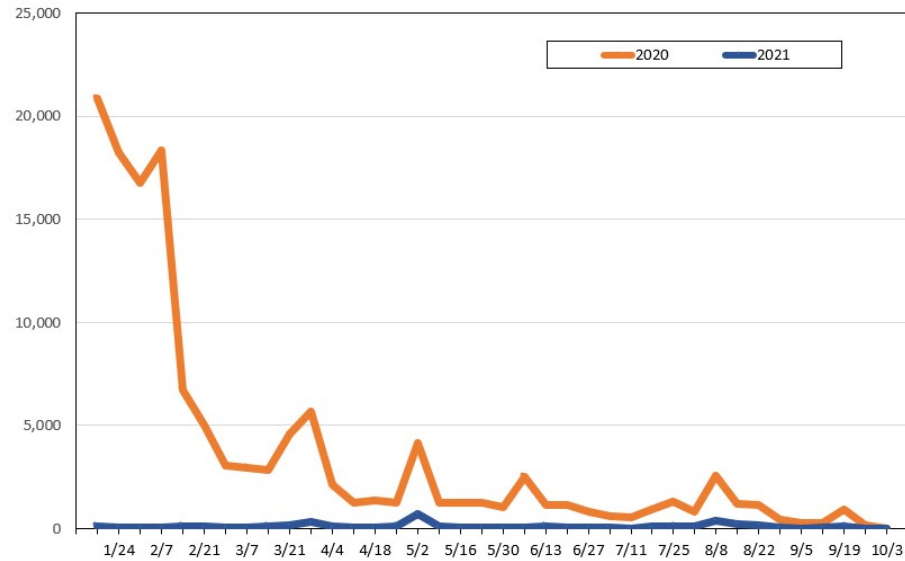
Update: Jan 10, 2021

Travel Agency Weekly Bookings for Future Travel to Hawai'i as of January 10, 2021
U.S.



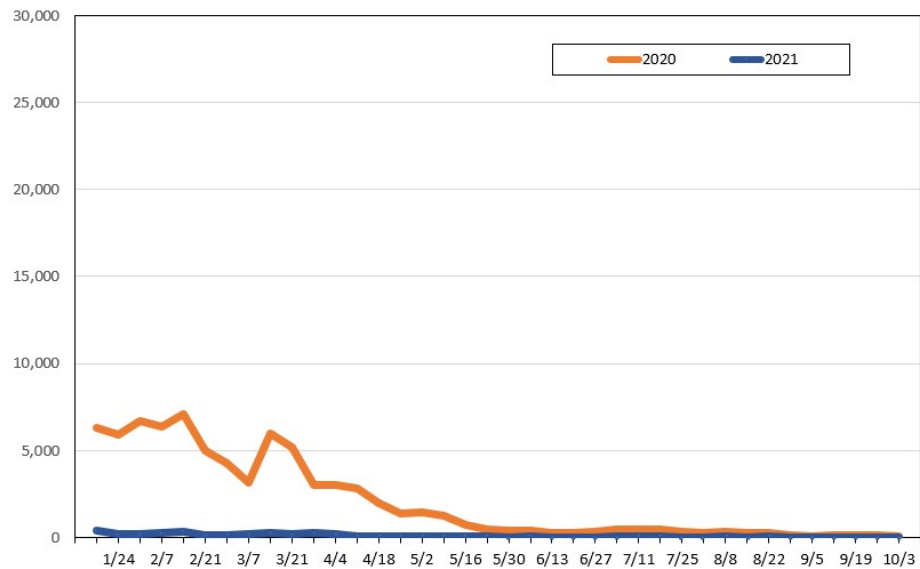
Source: Global Agency Pro, as of January 10, 2021

Travel Agency Weekly Bookings for Future Travel to Hawai'i as of January 10, 2021
Japan



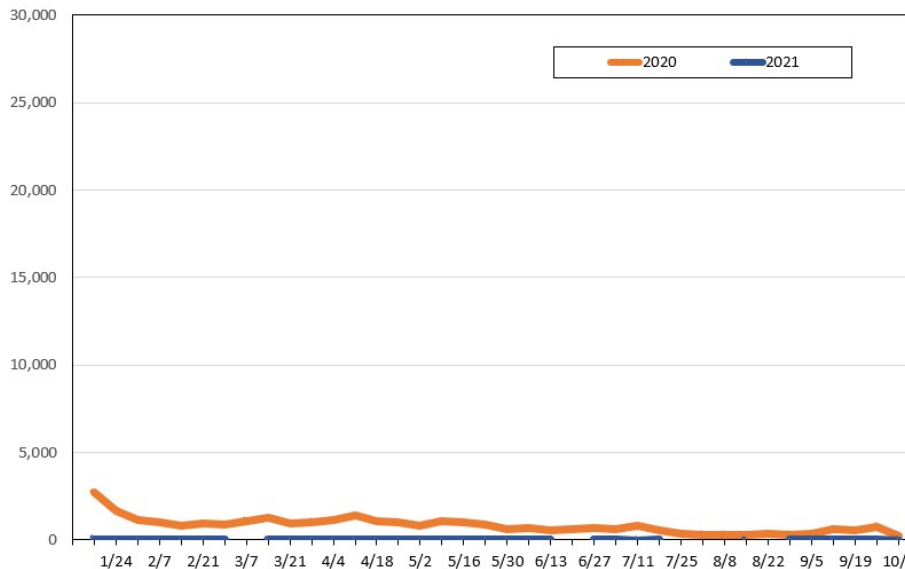
Source: Global Agency Pro, as of January 10, 2021

Travel Agency Weekly Bookings for Future Travel to Hawai'i as of January 10, 2021
Canada



Source: Global Agency Pro, as of January 10, 2021

Travel Agency Weekly Bookings for Future Travel to Hawai'i as of January 10, 2021
Australia



Source: Global Agency Pro, as of January 10, 2021