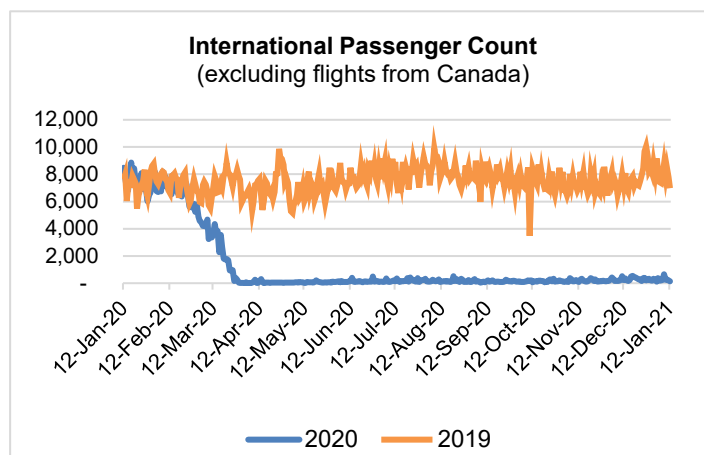
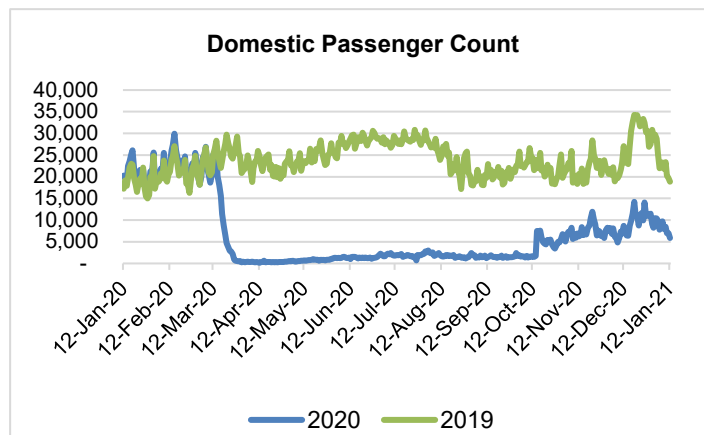
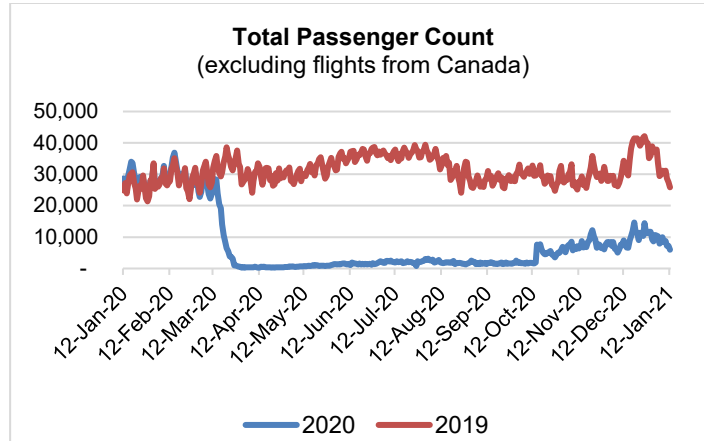


HTA COVID-19 UPDATE

(Issued: 1/13/21 @ 4:30pm)

Reason for Trip by Arrival Airport - Transpacific Screened Passengers as of 01/12/21	Honolulu (HNL)	Kahului (OGG)	Kona (KOA)	Lihue (LIH)	Grand Total
Airline Crew	353	149	81	6	589
Connecting Flight (Transit)	202	4	3	0	209
Corporate Meeting	0	8	0	0	8
Essential Worker	78	11	11	1	101
Honeymoon	13	4	2	0	19
Incentive Trip	0	0	0	0	0
Intended Resident	81	10	24	5	120
Military/Federal Government	99	0	0	0	99
Other	32	8	12	0	52
Other Business	31	17	11	0	59
Pleasure/Vacation	952	1,211	480	8	2,651
Returning Resident	786	142	112	12	1,052
Sports Event	7	0	1	0	8
To Attend School	21	0	1	0	22
Visiting Friends or Relatives	433	147	128	6	714
Grand Total	3,088	1,711	866	38	5,703

Source: Safe Travels program developed by the State of Hawaii Office of Enterprise Technology Services
Note: The data is preliminary and subject to change



Daily Passenger Count Table

01/12/2021	Domestic	International	Total
Oahu	3591	135	3726
Maui	1479		1479
Island of Hawaii	767		767
Kauai	27		27
State	5864	135	5999

Novel Coronavirus in Hawaii

COVID-19 Positive Cases

Cumulative totals as of 12:00pm on January 13, 2021

Total Confirmed Cases	23,733* (106 new)
Hawaii	2,037
Kauai	169
Lanai	106
Maui	1342†
Molokai	25
Oahu	19,462
Out of State	592
Pending	0
Required Hospitalization	1580‡
Hawaii Deaths	312
Cases in the past 14 days	2,292*

Footnotes for COVID-19 Cases

*

**Using cases reported in the past 14 days provides a rough approximation of the number of cases currently meeting criteria for isolation. This proxy number for "active cases" resolves classification issues for cases unable to be reached or who are out of jurisdiction, for whom precise release from isolation date may not be possible to determine. It is also not influenced by lags in data entry. (This total does not include Hawaii residents diagnosed outside of Hawaii)

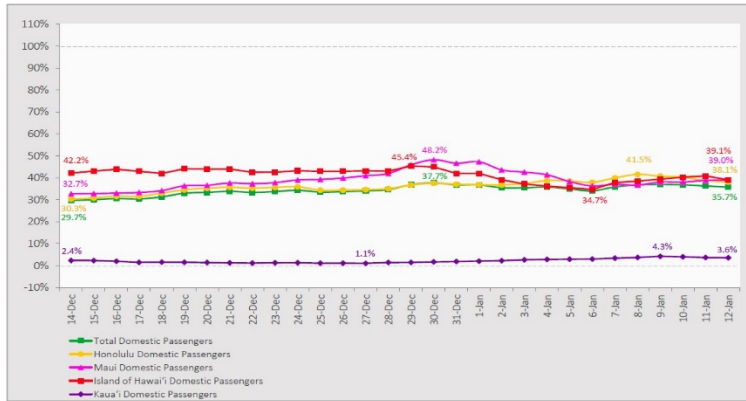
†One case is a Lanai resident whose exposure is on Maui Island and who will be remaining on Maui Island for the interim.

‡Includes Hawaii residents hospitalized out of state.

§Includes cases that meet isolation release criteria (Isolation should be maintained until at least 24 hours after resolution of fever and myalgia without the use of antipyretics OR at least 10 days have passed since symptom onset, whichever is longer). (The cases that have died and one case that has left the jurisdiction have been removed from these counts). Positive cases include confirmed cases, and Hawaii residents and non-residents; data are preliminary and subject to change. Note that CDC provides case counts according to states of residence.

7-Day Domestic by Island Moving Average Daily Passenger Volume

2021 Volume as Percentage of 2020 Volume
Through January 12, 2021



Source: HVCB analysis based on data from DBEDT
Note: Passenger volume figures include both visitors and residents.

Domestic by Island Month-to-Date and Year-to-Date Daily Passenger Volume

2021 Volume versus 2020 Volume
Through January 12, 2021

January 2021 (Month-to-Date through January 12)

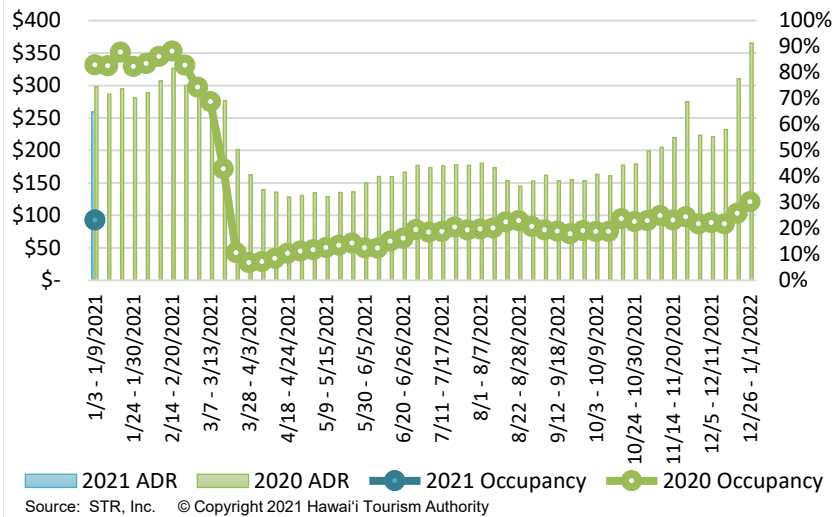
	2021	2020	Volume Change	Percent Change
Honolulu	61,156	168,848	-107,692	-63.8%
Maui County	25,587	72,561	-46,974	-64.7%
Island of Hawai'i	12,690	36,481	-23,791	-65.2%
Kaua'i	810	25,886	-25,076	-96.9%
Total	100,243	303,776	-203,533	-67.0%

2021 (Year-to-Date through January 12)

	2021	2020	Volume Change	Percent Change
Honolulu	61,156	168,848	-107,692	-63.8%
Maui County	25,587	72,561	-46,974	-64.7%
Island of Hawai'i	12,690	36,481	-23,791	-65.2%
Kaua'i	810	25,886	-25,076	-96.9%
Total	100,243	303,776	-203,533	-67.0%

Source: HVCB analysis based on data from DBEDT
Note: Passenger volume figures include both visitors and residents. Total includes other international passengers.

State of Hawai'i Hotel Performance by Week - 2021 vs 2020



Source: STR, Inc. © Copyright 2021 Hawai'i Tourism Authority

Hawaii Hotel Performance Info:

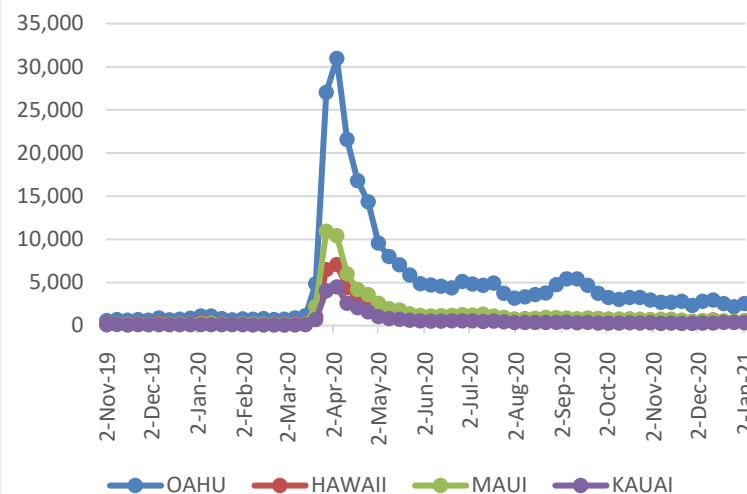
For the week of January 03 – January 09, 2021

	Occupancy	ADR	RevPAR
State of Hawaii	23.1%	\$ 259.30	\$ 59.96
Oahu	22.1%	\$ 167.13	\$ 36.88
Maui County	24.0%	\$ 448.72	\$ 107.47
Kauai County	17.7%	\$ 161.61	\$ 28.54
Island of Hawaii	28.9%	\$ 284.78	\$ 82.37

Weekly Unemployment Initial Claims: January 02, 2021

State of Hawaii	4,008
C&C of Oahu	2,529
Hawaii County	539
Maui County	488
Kauai County	326
Agent (filed in Hawaii against another state)	126

2020 Initial Weekly Unemployment Claims by Island



News Highlights

January 13, 2021

The Maui News: [Panel debates tourism's role in COVID-19 surge at town hall](#)

Hawaii Tribune-Herald: [As pandemic worsens, most US states resist restrictions](#)

The Garden Island: [COVID-19 vaccines for kupuna start Friday](#)

Fox News: [Utah man who reportedly broke Hawaii's travel quarantine is arrested twice](#)

Forbes: [Is Hawaiian Airlines Riding A Wave Or Will Southwest Create Too Much Undertow?](#)

Travel Pulse: [Travel Industry Reacts to CDC's New Air Travel Requirements](#)

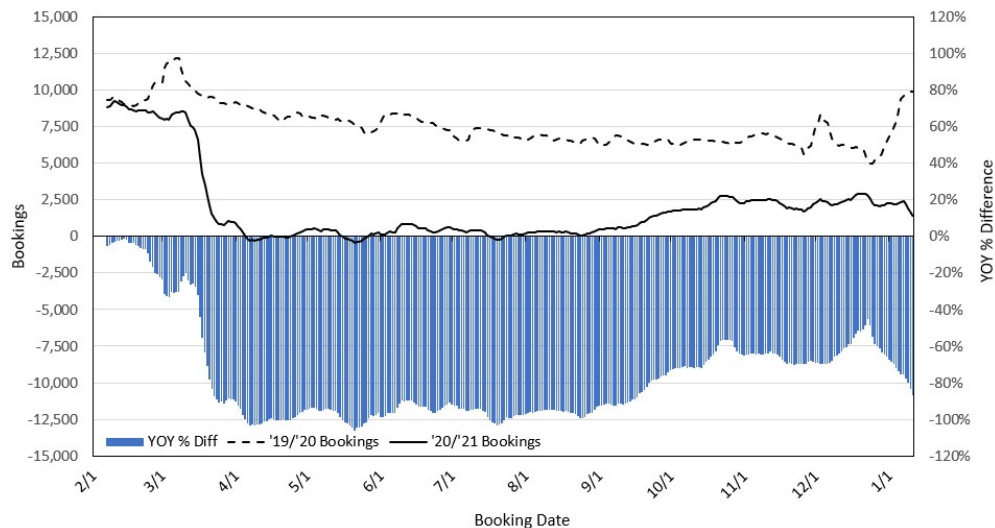
Japan Today: [We want people who are eager to visit but can't to take a look at what Hawaii is like now.](#)

Successful Meetings: [How to Maximize Virtual Event Content](#)

Forbes: [Tourists Behaving Badly - Are They Prompting A Tourism Backlash?](#)

Travel Awaits: [Hawaii Is Now Banning Certain Types Of Sunscreen, Here's Why](#)

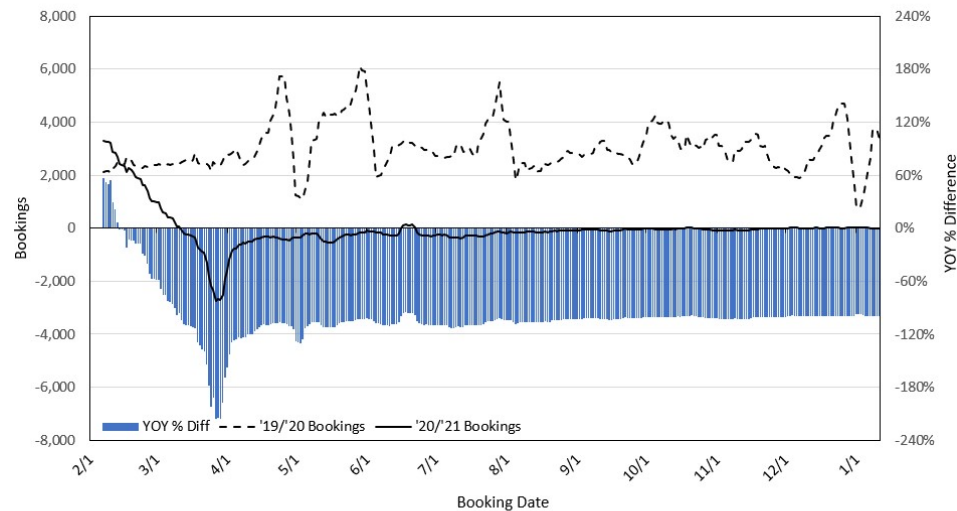
Travel Agency Bookings to Hawaii for Future Arrivals* Based on a 7-day Moving Average, 2021 vs 2020 U.S.



*Future Arrivals refers to all arrivals that are 'future' relative to the referenced booking date.
Source: Global Agency Pro

Update: Jan 11, 2021

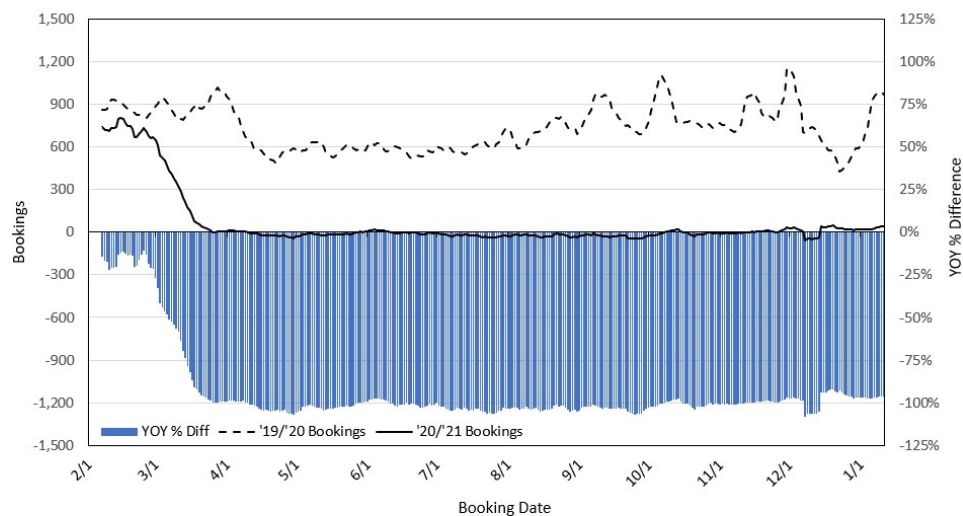
Travel Agency Bookings to Hawaii for Future Arrivals* Based on a 7-day Moving Average, 2020 vs 2019 Japan



*Future Arrivals refers to all arrivals that are 'future' relative to the referenced booking date.
Source: Global Agency Pro

Update: Jan 11, 2021

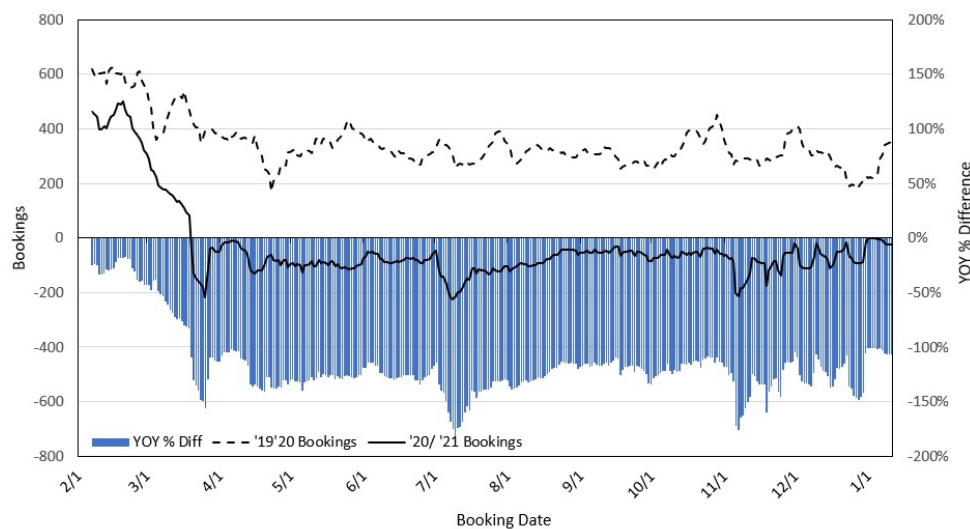
Travel Agency Bookings to Hawaii for Future Arrivals* Based on a 7-day Moving Average, 2020 vs 2019 Canada



*Future Arrivals refers to all arrivals that are 'future' relative to the referenced booking date.
Source: Global Agency Pro

Update: Jan 11, 2021

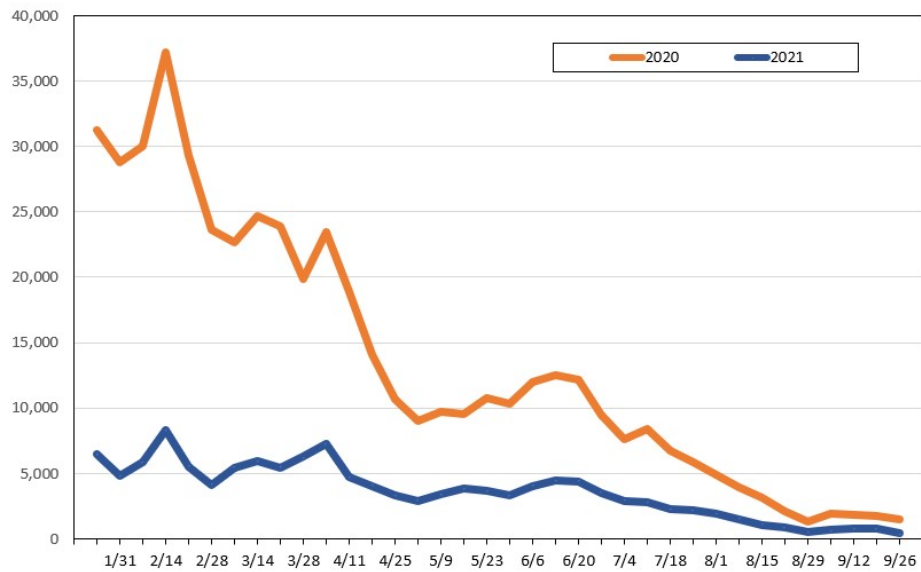
Travel Agency Bookings to Hawaii for Future Arrivals* Based on a 7-day Moving Average, 2020 vs 2019 Australia



*Future Arrivals refers to all arrivals that are 'future' relative to the referenced booking date.
Source: Global Agency Pro

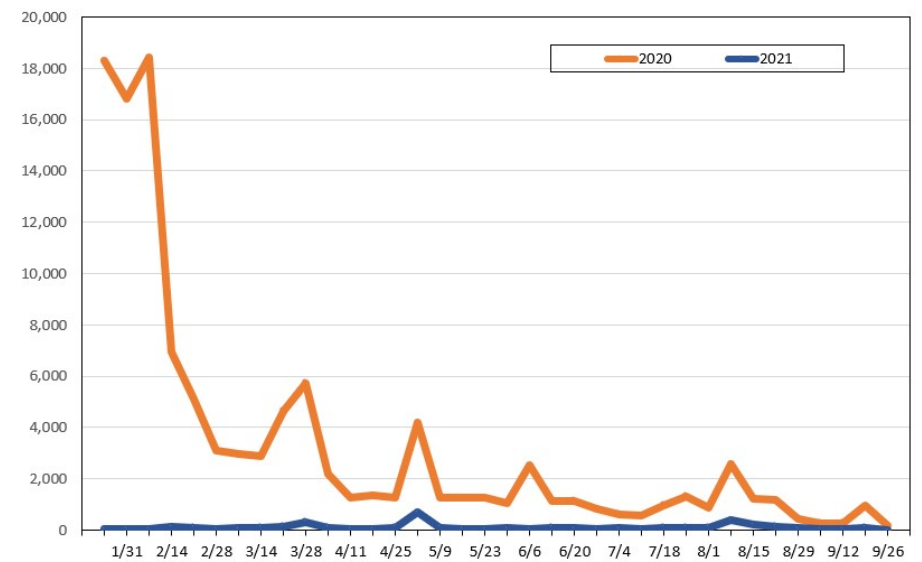
Update: Jan 11, 2021

Travel Agency Weekly Bookings for Future Travel to Hawai'i as of January 11, 2021
U.S.



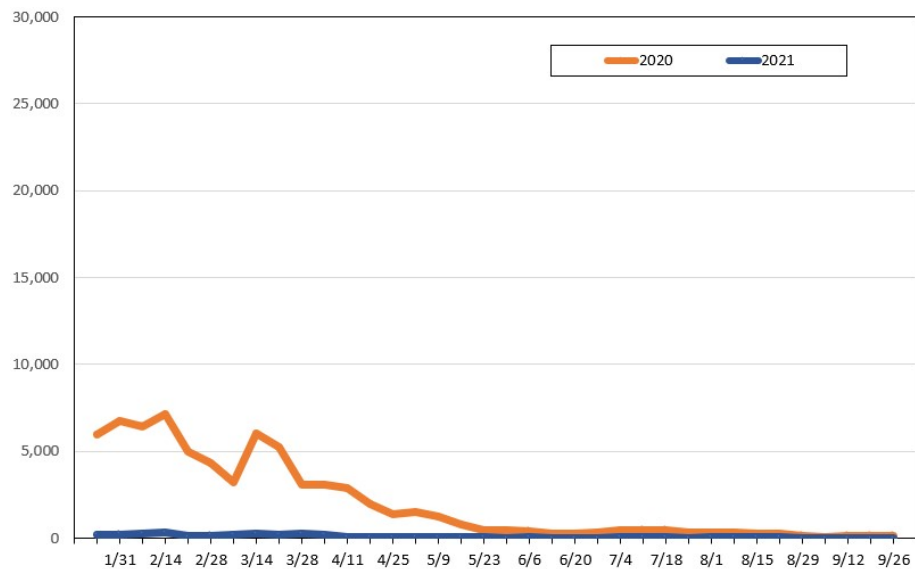
Source: Global Agency Pro, as of January 11, 2021

Travel Agency Weekly Bookings for Future Travel to Hawai'i as of January 11, 2021
Japan



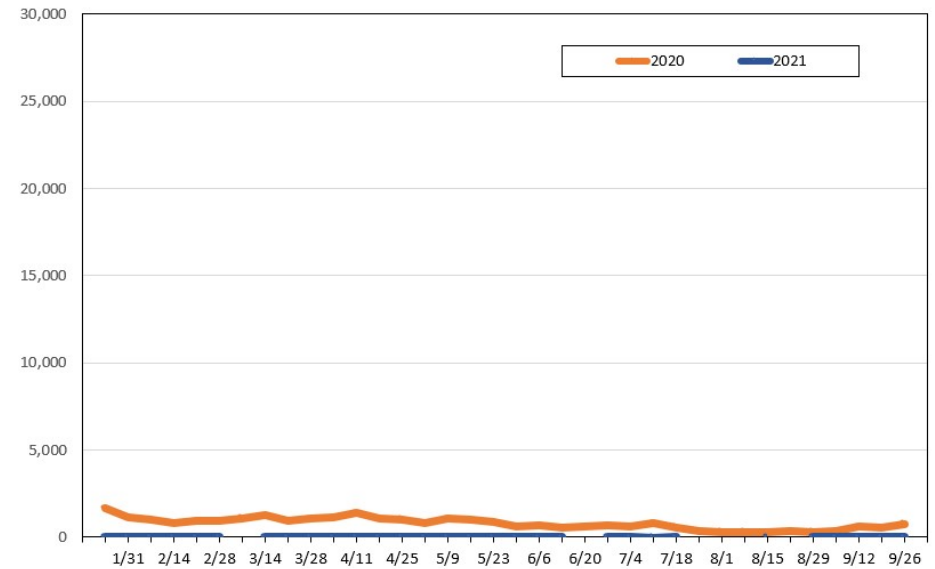
Source: Global Agency Pro, as of January 11, 2021

Travel Agency Weekly Bookings for Future Travel to Hawai'i as of January 11, 2021
Canada



Source: Global Agency Pro, as of January 11, 2021

Travel Agency Weekly Bookings for Future Travel to Hawai'i as of January 11, 2021
Australia



Source: Global Agency Pro, as of January 11, 2021