

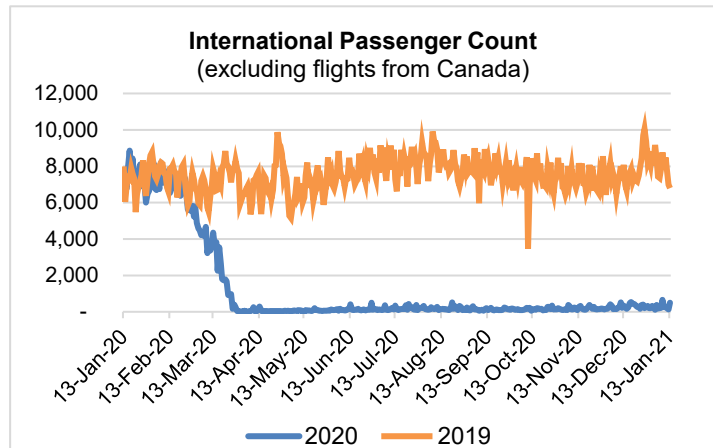
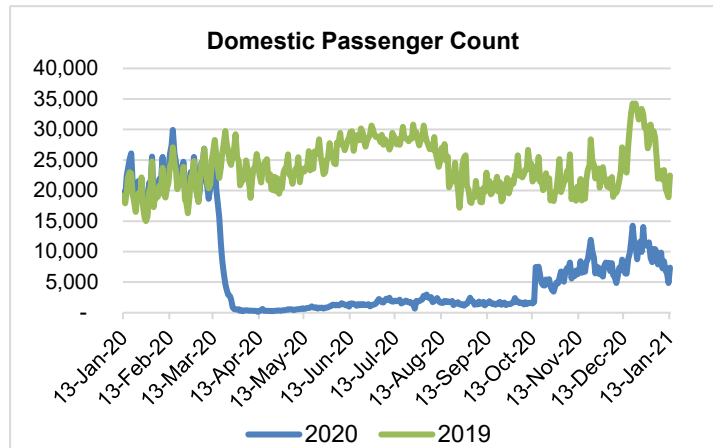
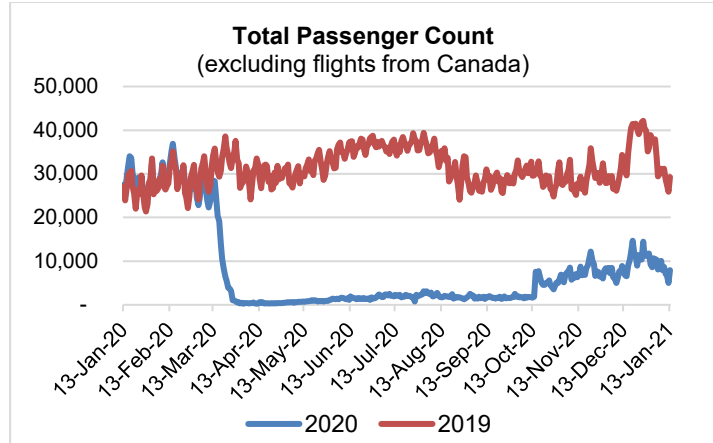
HTA COVID-19 UPDATE

(Issued: 1/14/21 @ 4:30pm)

Reason for Trip by Arrival Airport - Transpacific Screened Passengers as of 01/13/21	Honolulu (HNL)	Kahului (OGG)	Kona (KOA)	Lihue (LIH)	Grand Total
Airline Crew	380	180	81	13	654
Connecting Flight (Transit)	490	17	2	0	509
Corporate Meeting	4	4	3	0	11
Essential Worker	77	38	6	3	124
Honeymoon	3	8	0	0	11
Incentive Trip	3	0	0	0	3
Intended Resident	106	12	21	2	141
Military or Federal Government	77	0	1	0	78
Other	54	14	10	1	79
Other Business	61	15	23	3	102
Pleasure/Vacation	1,579	1,791	637	18	4,025
Returning Resident	795	146	124	42	1,107
Sports Event	11	0	3	0	14
To Attend School	32	1	3	0	36
To Get Married	1	4	1	0	6
Visiting Friends or Relatives	662	176	149	14	1,001
Grand Total	4,335	2,406	1,064	96	7,901

Source: Safe Travels program developed by the State of Hawaii Office of Enterprise Technology Services

Note: The data is preliminary and subject to change



Daily Passenger Count Table

01/13/2021	Domestic	International	Total
Oahu	4361	500	4861
Maui	2099		2099
Island of Hawaii	870		870
Kauai	75		75
State	7405	500	7905

Novel Coronavirus in Hawaii

COVID-19 Positive Cases

Cumulative totals as of 12:00pm on January 14, 2021

Total Confirmed Cases	23,908* (179 new)
Hawaii	2,050
Kauai	170
Lanai	106
Maui	1374†
Molokai	25
Oahu	19,580
Out of State	603
Pending	0
Required Hospitalization	1596‡
Hawaii Deaths	318
Cases in the past 14 days	2,281*

Footnotes for COVID-19 Cases

* As a result of updated information, four cases on Oahu were removed from the counts.

**Using cases reported in the past 14 days provides a rough approximation of the number of cases currently meeting criteria for isolation. This proxy number for "active cases" resolves classification issues for cases unable to be reached or who are out of jurisdiction, for whom precise release from isolation date may not be possible to determine. It is also not influenced by lags in data entry. (This total does not include Hawaii residents diagnosed outside of Hawaii)

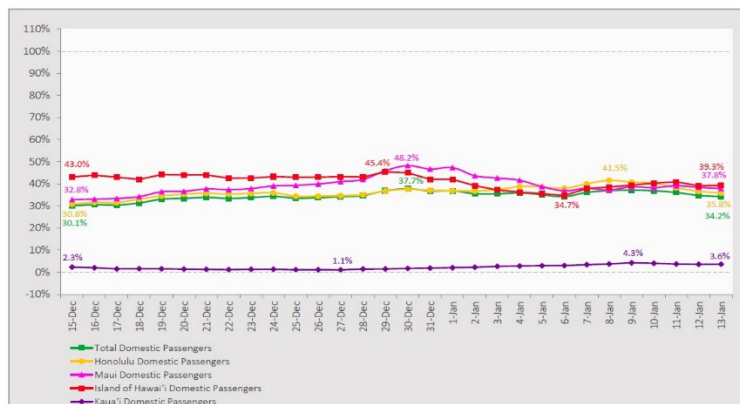
†One case is a Lanai resident whose exposure is on Maui Island and who will be remaining on Maui Island for the interim.

‡Includes Hawaii residents hospitalized out of state.

§Includes cases that meet isolation release criteria (Isolation should be maintained until at least 24 hours after resolution of fever and myalgia without the use of antipyretics OR at least 10 days have passed since symptom onset, whichever is longer). (The cases that have died and one case that has left the jurisdiction have been removed from these counts). Positive cases include confirmed cases, and Hawaii residents and non-residents; data are preliminary and subject to change. Note that CDC provides case counts according to states of residence.

7-Day Domestic by Island Moving Average Daily Passenger Volume

2021 Volume as Percentage of 2020 Volume
Through January 13, 2021



Source: HVCB analysis based on data from DBEDT
Note: Passenger volume figures include both visitors and residents.

Domestic by Island Month-to-Date and Year-to-Date Daily Passenger Volume

2021 Volume versus 2020 Volume
Through January 13, 2021

January 2021 (Month-to-Date through January 13)

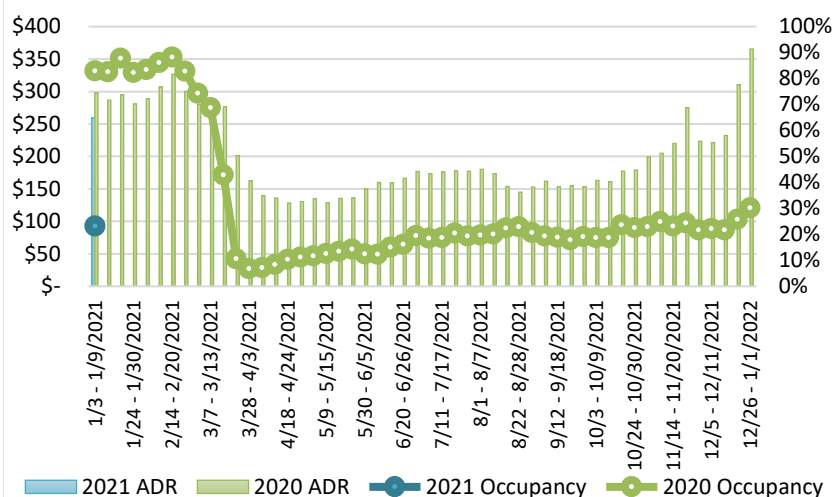
	2021	2020	Volume Change	Percent Change
Honolulu	64,255	180,086	-115,831	-64.3%
Maui County	27,615	76,888	-49,273	-64.1%
Island of Hawai'i	13,560	38,907	-25,347	-65.1%
Kaua'i	885	27,580	-26,695	-96.8%
Total	106,315	323,461	-217,146	-67.1%

2021 (Year-to-Date through January 13)

	2021	2020	Volume Change	Percent Change
Honolulu	64,255	180,086	-115,831	-64.3%
Maui County	27,615	76,888	-49,273	-64.1%
Island of Hawai'i	13,560	38,907	-25,347	-65.1%
Kaua'i	885	27,580	-26,695	-96.8%
Total	106,315	323,461	-217,146	-67.1%

Source: HVCB analysis based on data from DBEDT
Note: Passenger volume figures include both visitors and residents. Total includes other international passengers.

State of Hawai'i Hotel Performance by Week - 2021 vs 2020



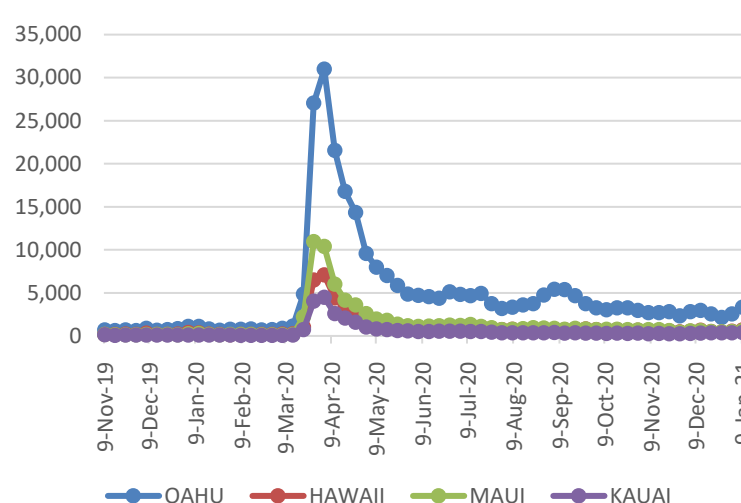
Source: STR, Inc. © Copyright 2021 Hawai'i Tourism Authority

Hawaii Hotel Performance Info:

For the week of January 03 – January 09, 2021

	Occupancy	ADR	RevPAR
State of Hawaii	23.1%	\$ 259.30	\$ 59.96
Oahu	22.1%	\$ 167.13	\$ 36.88
Maui County	24.0%	\$ 448.72	\$ 107.47
Kauai County	17.7%	\$ 161.61	\$ 28.54
Island of Hawaii	28.9%	\$ 284.78	\$ 82.37

2020 Initial Weekly Unemployment Claims by Island



Weekly Unemployment Initial Claims: January 09, 2021

State of Hawaii	5,095
C&C of Oahu	3,301
Hawaii County	668
Maui County	620
Kauai County	364
Agent (filed in Hawaii against another state)	142

News Highlights

January 14, 2021

Hawaii News Now: [2 mass vaccination sites to launch on Oahu in a bid to ramp up distribution](#)

Hawaii News Now: [A \\$12 billion loss for 2020, Delta is cautious in early 2021](#)

Honolulu Civil Beat: [Hawaii Lags Other States In Administering COVID-19 Vaccines, Federal Data Shows](#)

Maui News: [Shot clinic closes early as lines build up again](#)

TravelAge West: [New CDC Order Is Met With Mixed Reactions as Advisors Scramble to Save Client Vacations](#)

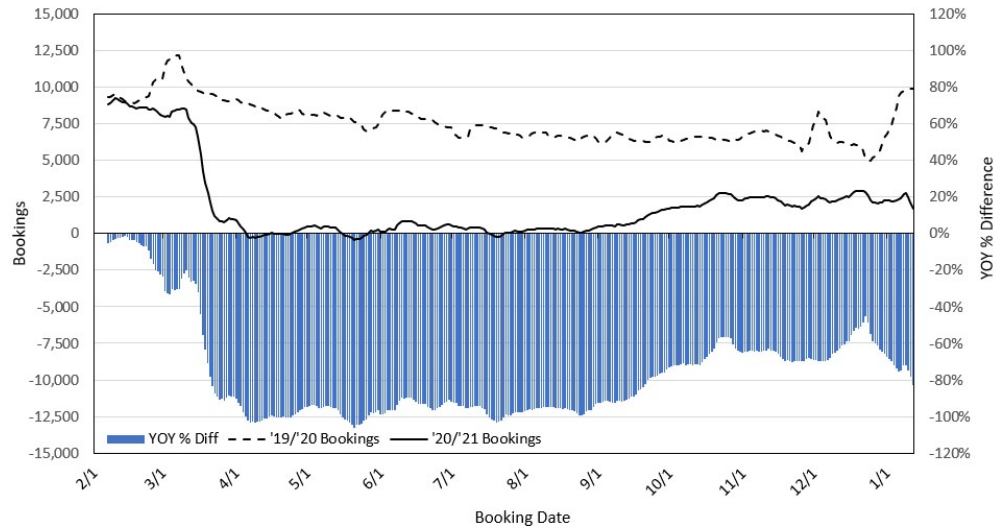
The Points Guy: [Predictions for the state of travel in 2021 from our editor](#)

Travel Weekly: [Covid-testing rules for inbound flyers: Step forward or stumbling block?](#)

Forbes: [The Covid-19 Pandemic Has Cost The Global Tourism Industry \\$935 Billion](#)

USA Today: [Planning an international trip? Get ready to show a negative coronavirus test to board your flight home](#)

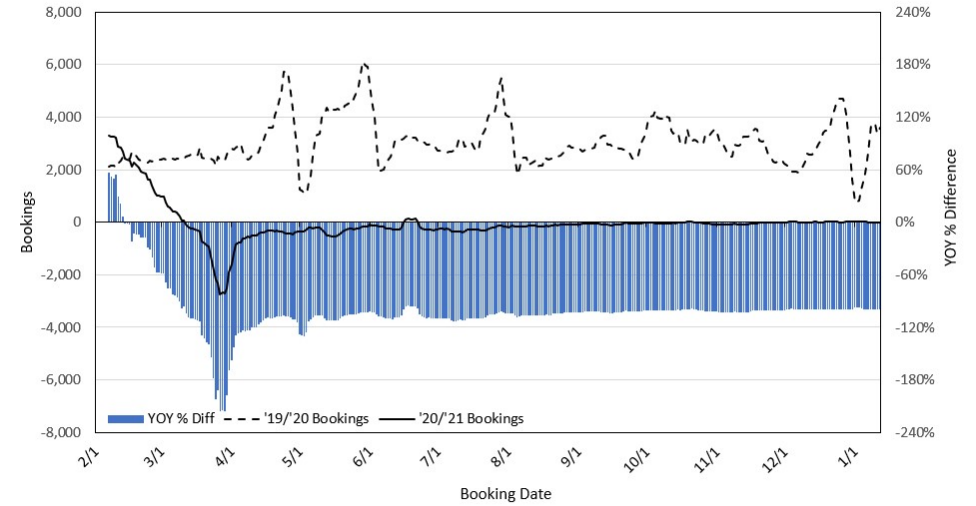
Travel Agency Bookings to Hawaii for Future Arrivals* Based on a 7-day Moving Average, 2021 vs 2020 U.S.



*Future Arrivals refers to all arrivals that are 'future' relative to the referenced booking date.
Source: Global Agency Pro

Update: Jan 12, 2021

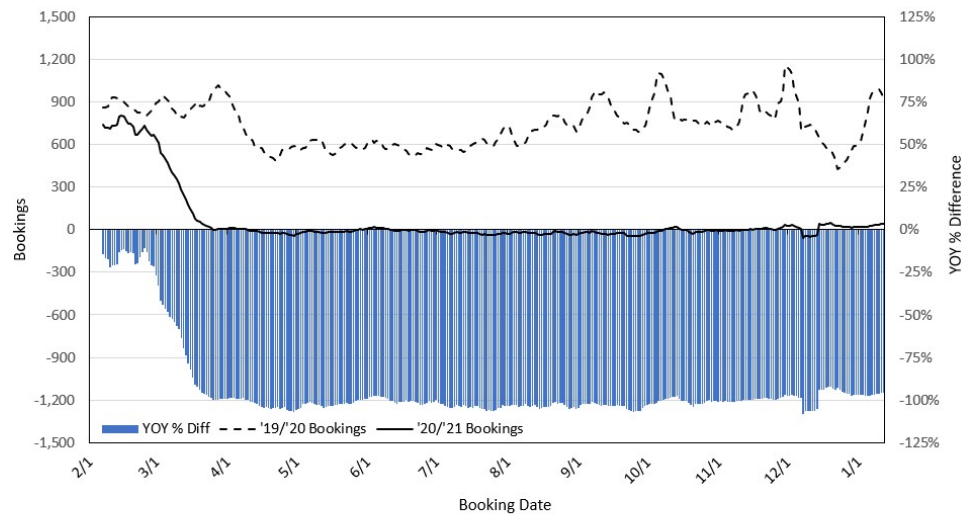
Travel Agency Bookings to Hawaii for Future Arrivals* Based on a 7-day Moving Average, 2020 vs 2019 Japan



*Future Arrivals refers to all arrivals that are 'future' relative to the referenced booking date.
Source: Global Agency Pro

Update: Jan 12, 2021

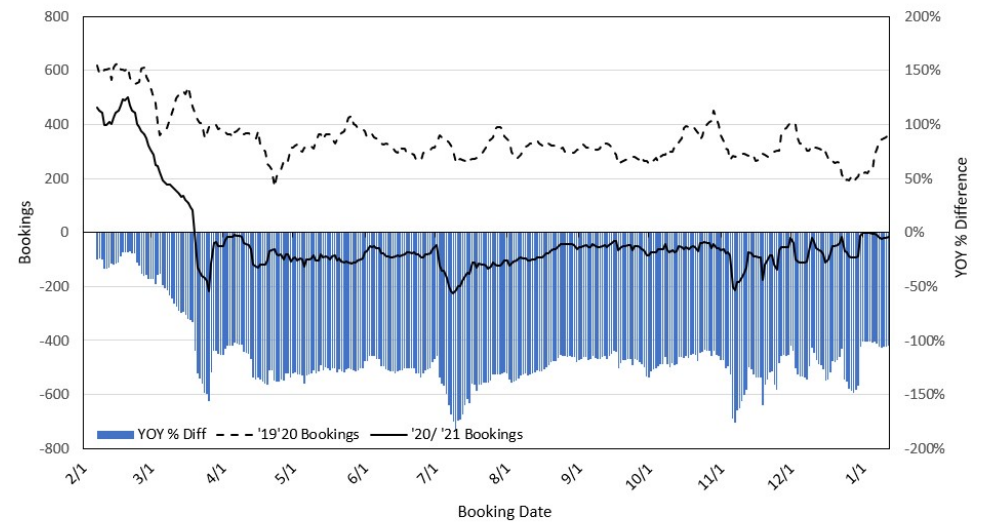
Travel Agency Bookings to Hawaii for Future Arrivals* Based on a 7-day Moving Average, 2020 vs 2019 Canada



*Future Arrivals refers to all arrivals that are 'future' relative to the referenced booking date.
Source: Global Agency Pro

Update: Jan 12, 2021

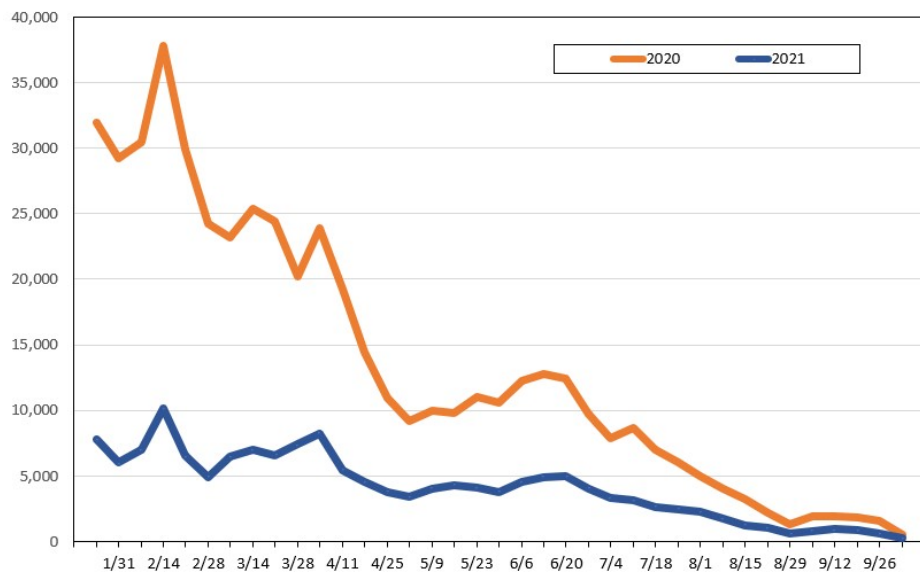
Travel Agency Bookings to Hawaii for Future Arrivals* Based on a 7-day Moving Average, 2020 vs 2019 Australia



*Future Arrivals refers to all arrivals that are 'future' relative to the referenced booking date.
Source: Global Agency Pro

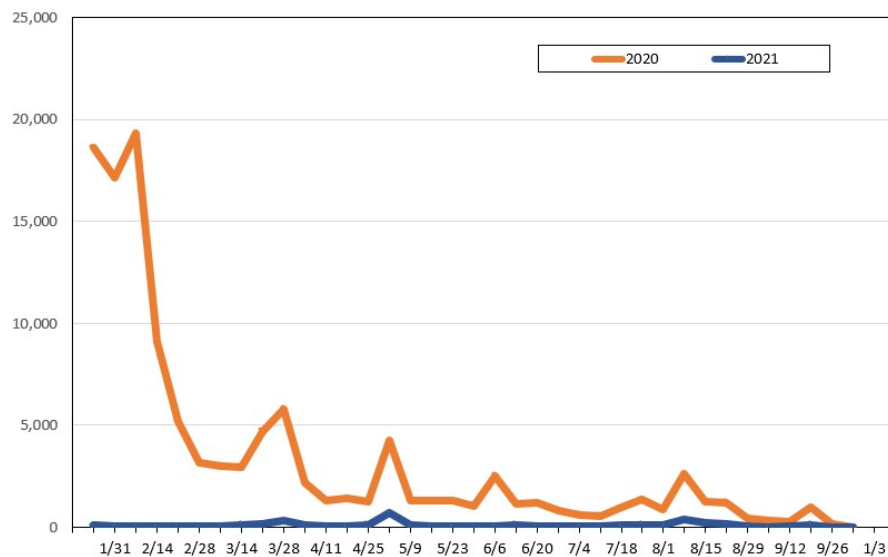
Update: Jan 12, 2021

Travel Agency Weekly Bookings for Future Travel to Hawai'i as of January 12, 2021
U.S.



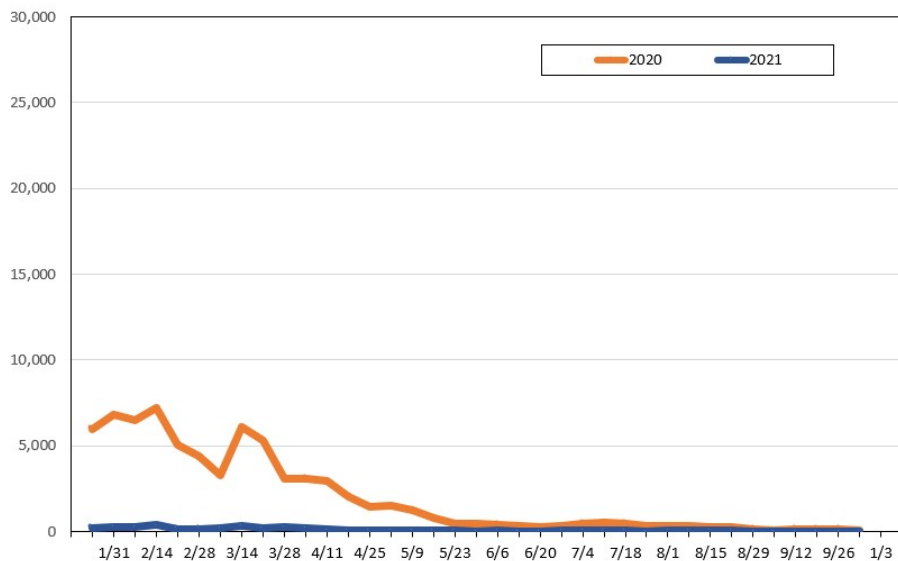
Source: Global Agency Pro, as of January 12, 2021

Travel Agency Weekly Bookings for Future Travel to Hawai'i as of January 12, 2021
Japan



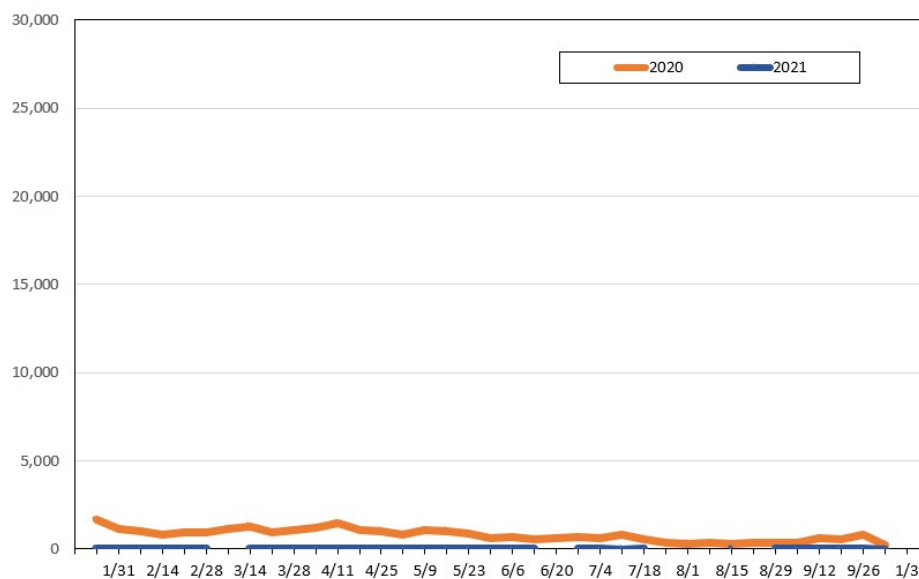
Source: Global Agency Pro, as of January 12, 2021

Travel Agency Weekly Bookings for Future Travel to Hawai'i as of January 12, 2021
Canada



Source: Global Agency Pro, as of January 12, 2021

Travel Agency Weekly Bookings for Future Travel to Hawai'i as of January 12, 2021
Australia



Source: Global Agency Pro, as of January 12, 2021