

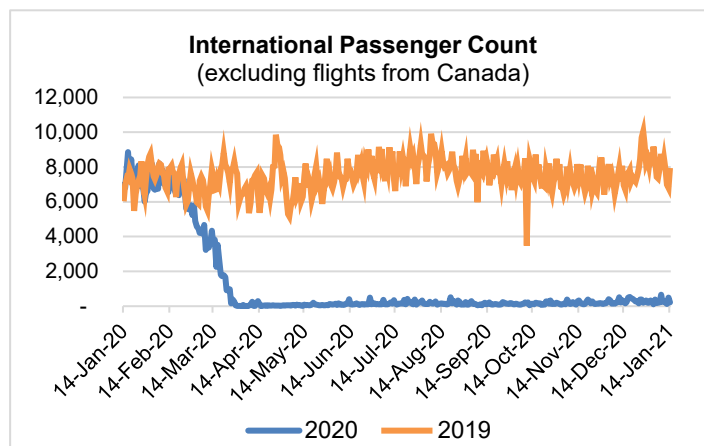
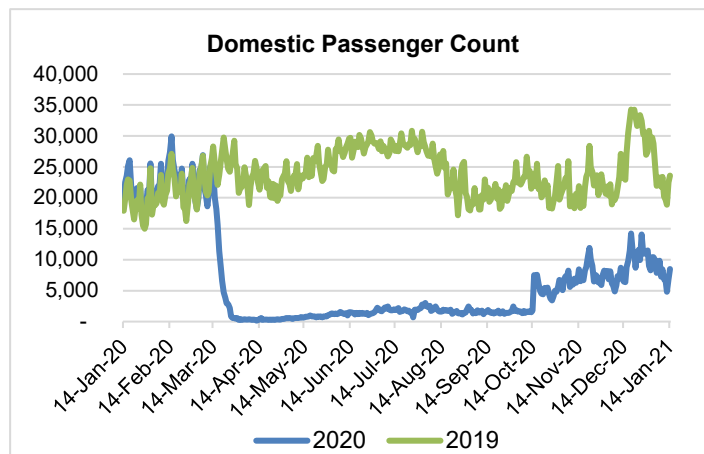
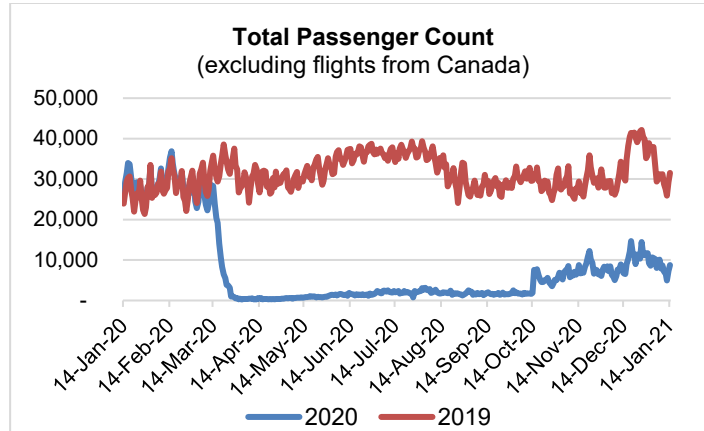
HTA COVID-19 UPDATE

(Issued: 1/15/21 @ 4:30pm)

Reason for Trip by Arrival Airport - Transpacific Screened Passengers as of 01/14/21	Honolulu (HNL)	Kahului (OGG)	Kona (KOA)	Lihue (LIH)	Grand Total
Airline Crew	427	162	107	12	708
Connecting Flight (Transit)	282	45	2	0	329
Corporate Meeting	4	20	0	0	24
Essential Worker	76	14	11	4	105
Honeymoon	4	7	0	0	11
Incentive Trip	1	0	1	0	2
Intended Resident	135	39	20	2	196
Military or Federal Government	79	0	0	0	79
Other	85	37	16	1	139
Other Business	62	33	14	1	110
Pleasure/Vacation	2,278	2,212	778	20	5,288
Returning Resident	811	184	123	44	1,162
Sports Event	24	2	5	0	31
To Attend School	33	0	22	0	55
To Get Married	0	2	2	0	4
Transit	1	0	0	0	1
Visiting Friends or Relatives	920	222	179	10	1,331
Grand Total	5,222	2,979	1,280	94	9,575

Source: Safe Travels program developed by the State of Hawaii Office of Enterprise Technology Services

Note: The data is preliminary and subject to change



Daily Passenger Count Table

01/14/2021	Domestic	International	Total
Oahu	4680	220	4900
Maui	2633		2633
Island of Hawaii	1112		1112
Kauai	78		78
State	8503	220	8723

Novel Coronavirus in Hawaii

COVID-19 Positive Cases

Cumulative totals as of 12:00pm on January 15, 2021

Total Confirmed Cases	24,058* (150 new)
Hawaii	2,055
Kauai	171
Lanai	106
Maui	1400†
Molokai	25
Oahu	19,691
Out of State	610
Pending	0
Required Hospitalization	1596‡
Hawaii Deaths	318
Cases in the past 14 days	2,193*

Footnotes for COVID-19 Cases

*

**Using cases reported in the past 14 days provides a rough approximation of the number of cases currently meeting criteria for isolation. This proxy number for "active cases" resolves classification issues for cases unable to be reached or who are out of jurisdiction, for whom precise release from isolation date may not be possible to determine. It is also not influenced by lags in data entry. (This total does not include Hawaii residents diagnosed outside of Hawaii)

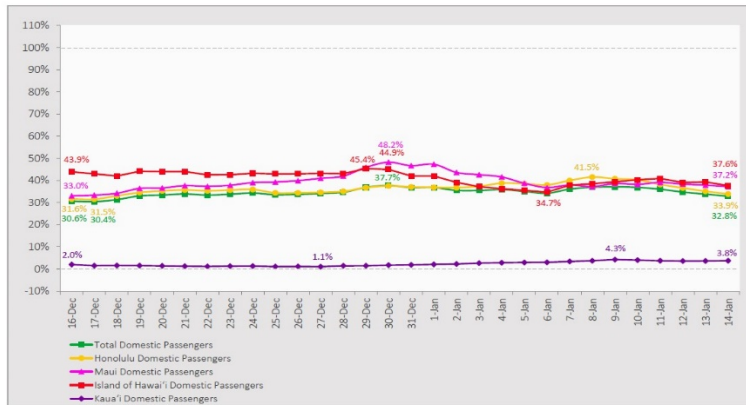
†One case is a Lanai resident whose exposure is on Maui Island and who will be remaining on Maui Island for the interim.

‡Includes Hawaii residents hospitalized out of state.

§Includes cases that meet isolation release criteria (Isolation should be maintained until at least 24 hours after resolution of fever and myalgia without the use of antipyretics OR at least 10 days have passed since symptom onset, whichever is longer). (The cases that have died and one case that has left the jurisdiction have been removed from these counts). Positive cases include confirmed cases, and Hawaii residents and non-residents; data are preliminary and subject to change. Note that CDC provides case counts according to states of residence.

7-Day Domestic by Island Moving Average Daily Passenger Volume

2021 Volume as Percentage of 2020 Volume
Through January 14, 2021



Source: HVCB analysis based on data from DBEDT
Note: Passenger volume figures include both visitors and residents.

Domestic by Island Month-to-Date and Year-to-Date Daily Passenger Volume

2021 Volume versus 2020 Volume
Through January 14, 2021

January 2021 (Month-to-Date through January 14)

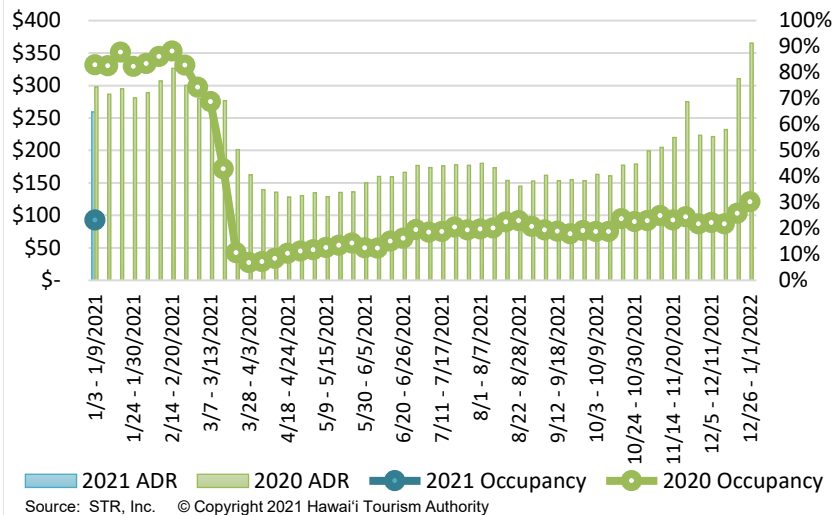
	2021	2020	Volume Change	Percent Change
Honolulu	68,352	190,938	-122,586	-64.2%
Maui County	30,248	81,222	-50,974	-62.8%
Island of Hawai'i	14,672	41,164	-26,492	-64.4%
Kaua'i	963	29,034	-28,071	-96.7%
Total	114,235	342,358	-228,123	-66.6%

2021 (Year-to-Date through January 14)

	2021	2020	Volume Change	Percent Change
Honolulu	68,352	190,938	-122,586	-64.2%
Maui County	30,248	81,222	-50,974	-62.8%
Island of Hawai'i	14,672	41,164	-26,492	-64.4%
Kaua'i	963	29,034	-28,071	-96.7%
Total	114,235	342,358	-228,123	-66.6%

Source: HVCB analysis based on data from DBEDT
Note: Passenger volume figures include both visitors and residents. Total includes other international passengers.

State of Hawai'i Hotel Performance by Week - 2021 vs 2020



Source: STR, Inc. © Copyright 2021 Hawai'i Tourism Authority

Hawaii Hotel Performance Info:

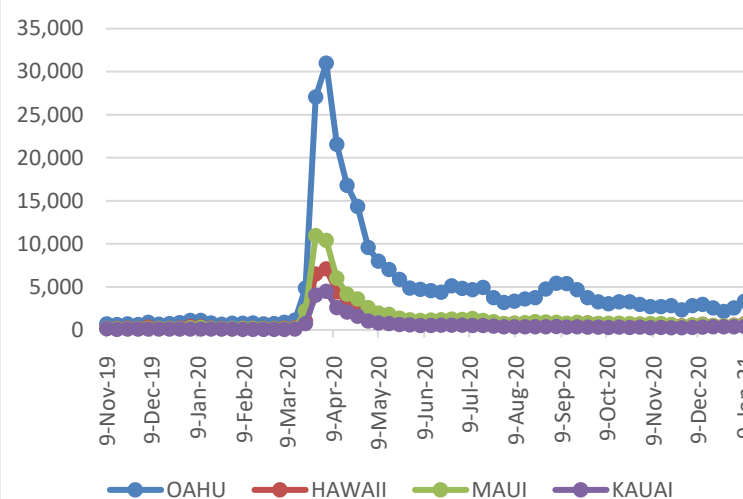
For the week of January 03 – January 09, 2021

	Occupancy	ADR	RevPAR
State of Hawaii	23.1%	\$ 259.30	\$ 59.96
Oahu	22.1%	\$ 167.13	\$ 36.88
Maui County	24.0%	\$ 448.72	\$ 107.47
Kauai County	17.7%	\$ 161.61	\$ 28.54
Island of Hawaii	28.9%	\$ 284.78	\$ 82.37

Weekly Unemployment Initial Claims: January 09, 2021

State of Hawaii	5,095
C&C of Oahu	3,301
Hawaii County	668
Maui County	620
Kauai County	364
Agent (filed in Hawaii against another state)	142

2020 Initial Weekly Unemployment Claims by Island



News Highlights

January 15, 2021

Hawaii News Now: [After a terrible year, Hawaii's small business express little optimism about 2021](#)

Hawaii News Now: [Here's what you need to know about COVID-19 vaccine distribution in Hawaii](#)

TripSavvy: [How Pandemic-Related Closures Allowed Oahu's Hanauma Bay to Recover](#)

The Wall Street Journal: [U.K. Covid-19 Variant Likely to Become Dominant U.S. Strain in March, CDC Says](#)

Popular Science: [Hawaii managed COVID-19 better than any other state, but its residents are still at risk](#)

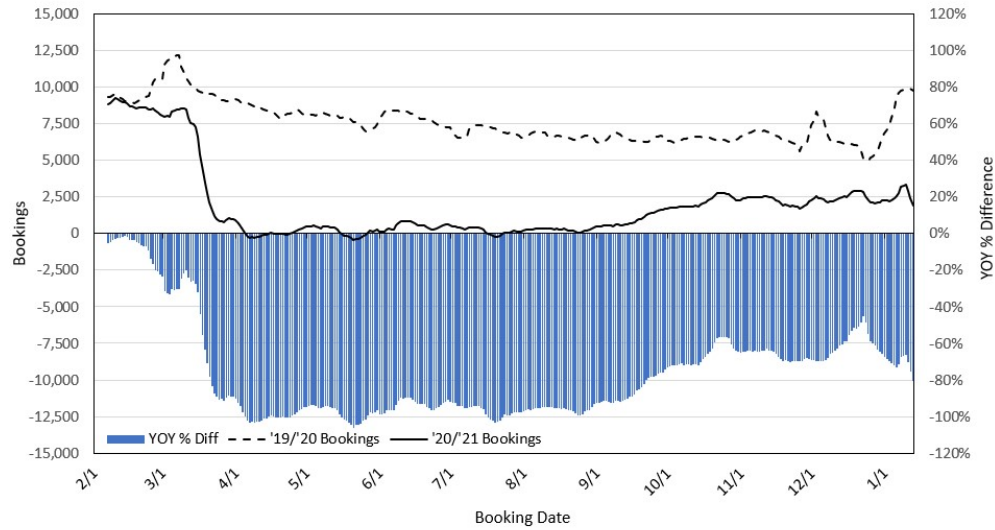
USA Today: [COVID-19 exposure on flights is more common than you think. The US doesn't share details, but Canada does](#)

The Points Guy: [Opening America: State-by-state guide to coronavirus reopening](#)

Jeffsetter Travel: [Hawaii Pre-Travel Testing Fails to Attract Japanese](#)

CNN: [More US Covid-19 deaths reported in the past two weeks than any other 14-day period in the pandemic](#)

Travel Agency Bookings to Hawaii for Future Arrivals* Based on a 7-day Moving Average, 2021 vs 2020 U.S.



*Future Arrivals refers to all arrivals that are 'future' relative to the referenced booking date.
Source: Global Agency Pro

Update: Jan 13, 2021

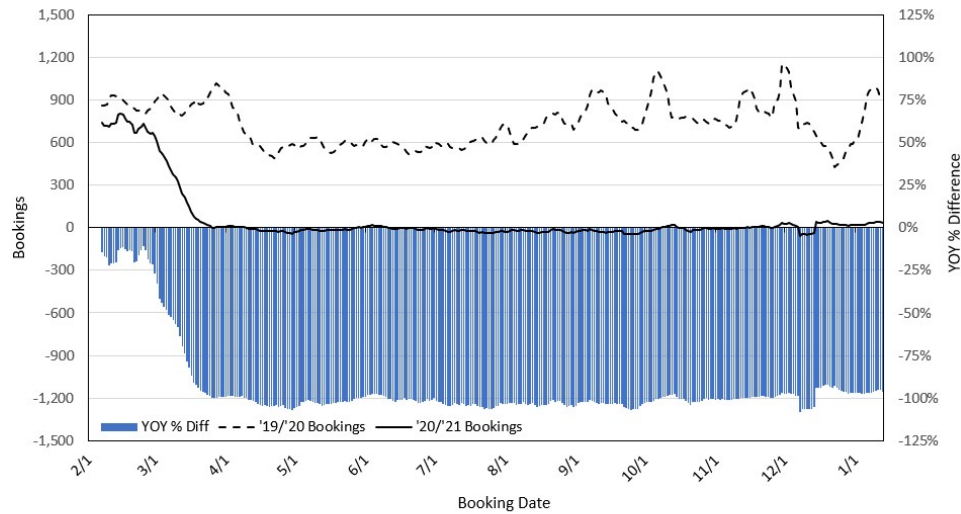
Travel Agency Bookings to Hawaii for Future Arrivals* Based on a 7-day Moving Average, 2020 vs 2019 Japan



*Future Arrivals refers to all arrivals that are 'future' relative to the referenced booking date.
Source: Global Agency Pro

Update: Jan 13, 2021

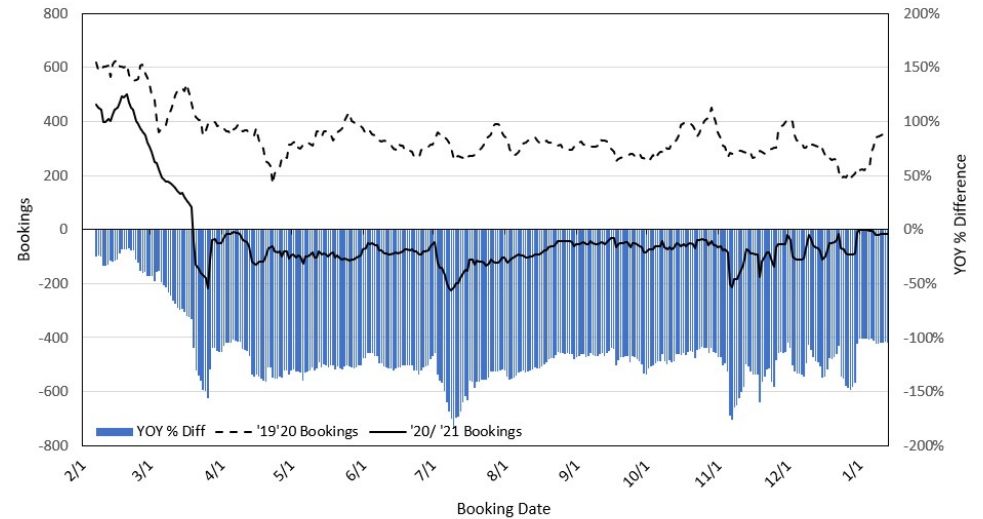
Travel Agency Bookings to Hawaii for Future Arrivals* Based on a 7-day Moving Average, 2020 vs 2019 Canada



*Future Arrivals refers to all arrivals that are 'future' relative to the referenced booking date.
Source: Global Agency Pro

Update: Jan 13, 2021

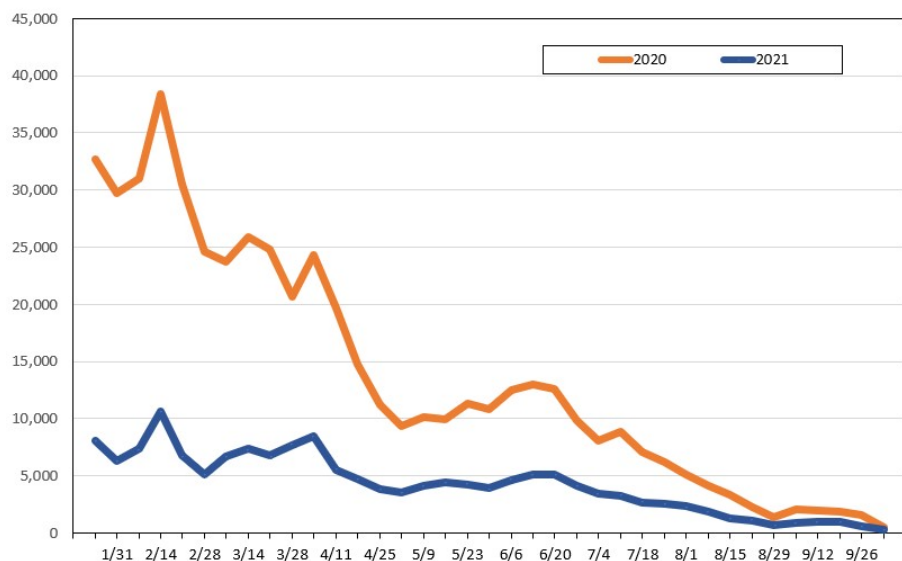
Travel Agency Bookings to Hawaii for Future Arrivals* Based on a 7-day Moving Average, 2020 vs 2019 Australia



*Future Arrivals refers to all arrivals that are 'future' relative to the referenced booking date.
Source: Global Agency Pro

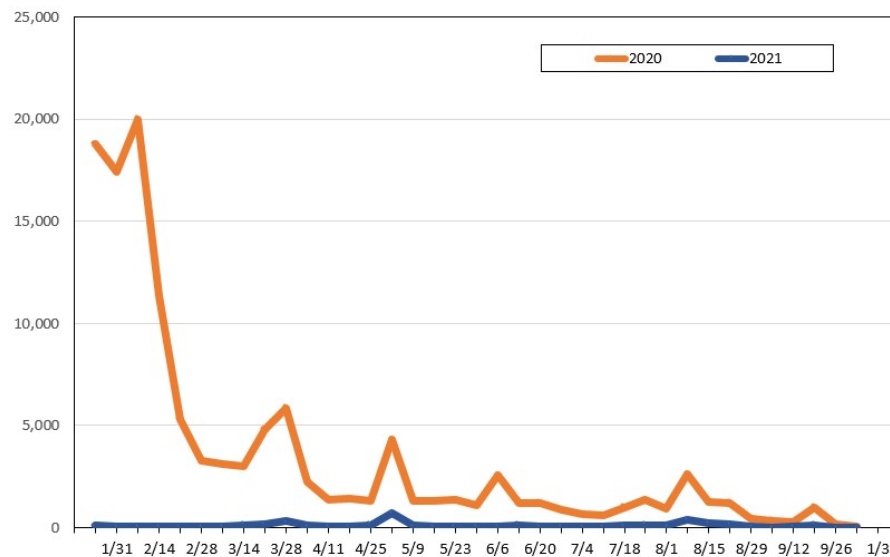
Update: Jan 13, 2021

Travel Agency Weekly Bookings for Future Travel to Hawai'i as of January 13, 2021
U.S.



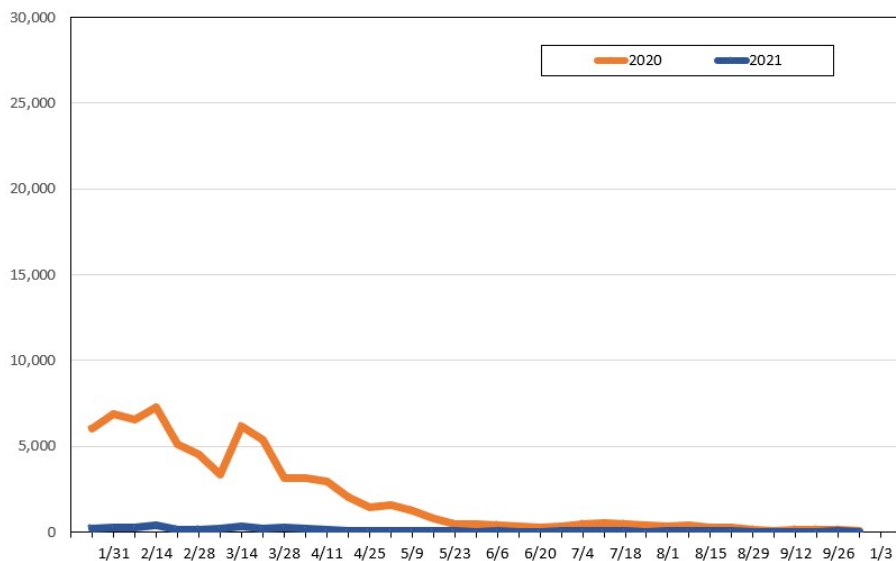
Source: Global Agency Pro, as of January 13, 2021

Travel Agency Weekly Bookings for Future Travel to Hawai'i as of January 13, 2021
Japan



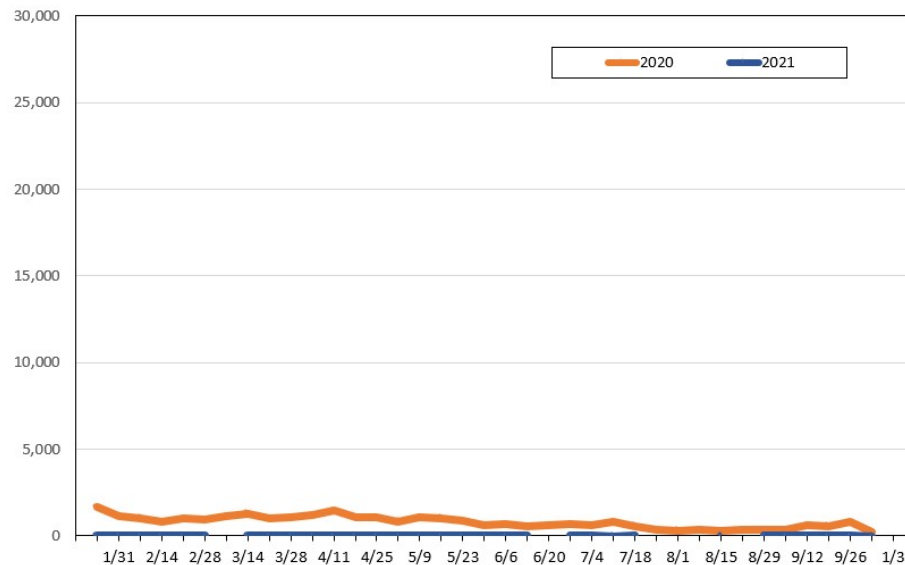
Source: Global Agency Pro, as of January 13, 2021

Travel Agency Weekly Bookings for Future Travel to Hawai'i as of January 13, 2021
Canada



Source: Global Agency Pro, as of January 13, 2021

Travel Agency Weekly Bookings for Future Travel to Hawai'i as of January 13, 2021
Australia



Source: Global Agency Pro, as of January 13, 2021