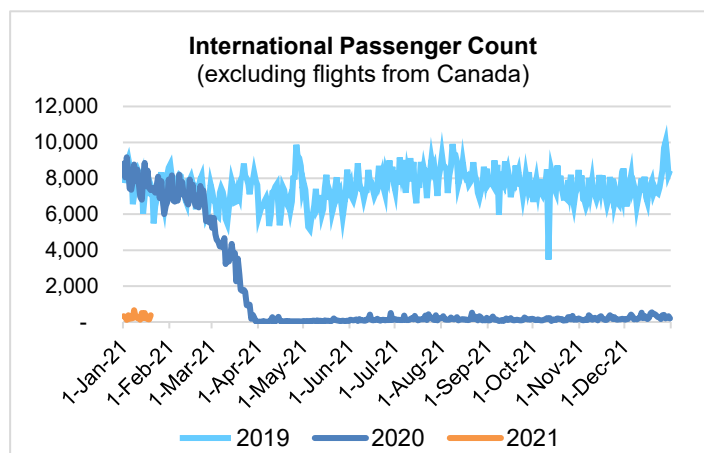
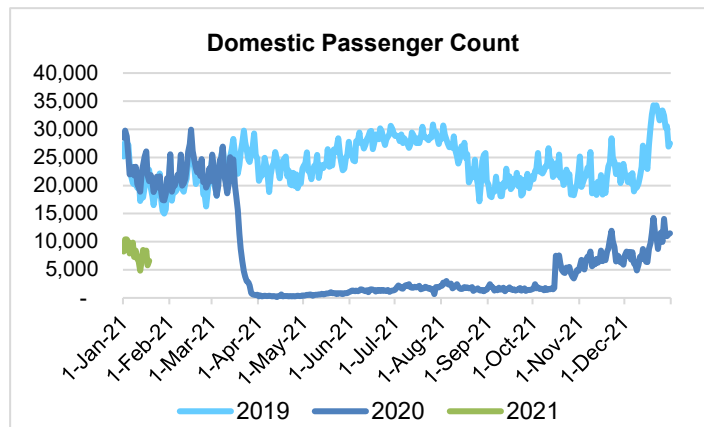
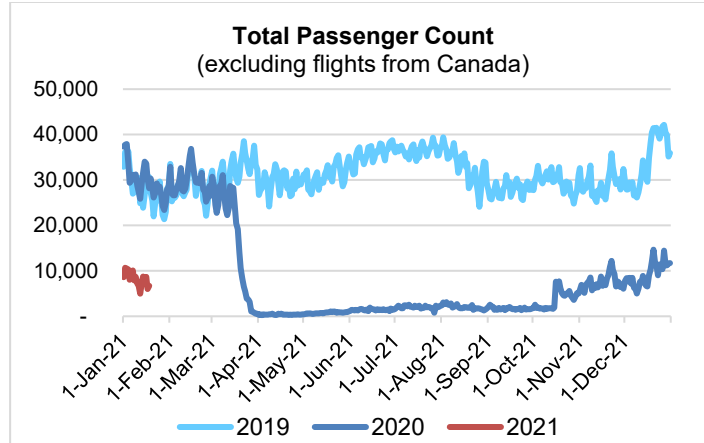


HTA COVID-19 UPDATE

(Issued: 1/19/21 @ 4:30pm)

Reason for Trip by Arrival Airport - Transpacific Screened Passengers as of 01/18/21	Honolulu (HNL)	Kahului (OGG)	Kona (KOA)	Lihue (LIH)	Grand Total
Airline Crew	381	177	95	5	658
Connecting Flight (Transit)	296	17	1	0	314
Corporate Meeting	2	1	0	0	3
Essential Worker	187	22	13	5	227
Honeymoon	6	9	2	0	17
Incentive Trip	2	3	1	0	6
Intended Resident	112	14	16	5	147
Military or Federal Government	150	3	0	1	154
Other	63	16	15	4	98
Other Business	73	23	23	6	125
Pleasure/Vacation	1,276	1,356	511	18	3,161
Returning Resident	1,170	162	136	30	1,498
Sports Event	0	0	4	0	4
To Attend School	61	0	1	0	62
To Get Married	6	6	0	0	12
Visiting Friends or Relatives	579	156	131	13	879
Grand Total	4,364	1,965	949	87	7,365

Source: Safe Travels program developed by the State of Hawaii Office of Enterprise Technology Services
Note: The data is preliminary and subject to change



Daily Passenger Count Table

01/18/2021	Domestic	International	Total
Oahu	4020	151	4171
Maui	1682		1682
Island of Hawaii	793		793
Kauai	78		78
State	6573	151	6724

Novel Coronavirus in Hawaii

COVID-19 Positive Cases

Cumulative totals as of 12:00pm on January 19, 2021

Total Confirmed Cases	24,546* (65 new)
Hawaii	2,088
Kauai	175
Lanai	106
Maui	1487†
Molokai	25
Oahu	20,018
Out of State	647
Pending	0
Required Hospitalization	1617‡
Hawaii Deaths	324
Cases in the past 14 days	2,184*

Footnotes for COVID-19 Cases

*As a result of updated information, one case on Oahu was removed from the counts.

**Using cases reported in the past 14 days provides a rough approximation of the number of cases currently meeting criteria for isolation. This proxy number for "active cases" resolves classification issues for cases unable to be reached or who are out of jurisdiction, for whom precise release from isolation date may not be possible to determine. It is also not influenced by lags in data entry. (This total does not include Hawaii residents diagnosed outside of Hawaii)

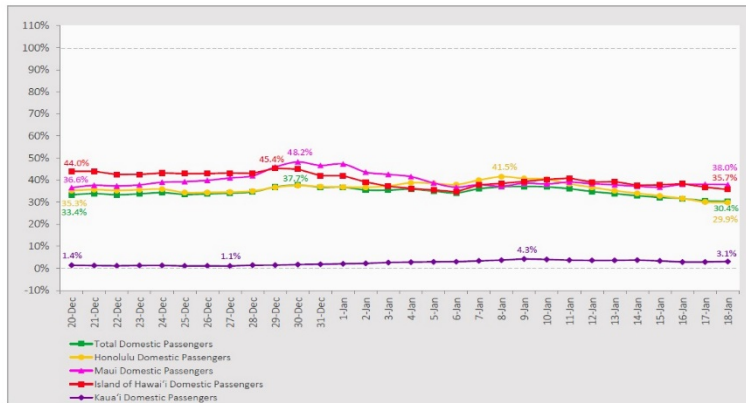
†One case is a Lanai resident whose exposure is on Maui Island and who will be remaining on Maui Island for the interim.

‡Includes Hawaii residents hospitalized out of state.

§Includes cases that meet isolation release criteria (Isolation should be maintained until at least 24 hours after resolution of fever and myalgia without the use of antipyretics OR at least 10 days have passed since symptom onset, whichever is longer). (The cases that have died and one case that has left the jurisdiction have been removed from these counts). Positive cases include confirmed cases, and Hawaii residents and non-residents; data are preliminary and subject to change. Note that CDC provides case counts according to states of residence.

7-Day Domestic by Island Moving Average Daily Passenger Volume

2021 Volume as Percentage of 2020 Volume
Through January 18, 2021



Source: HVCB analysis based on data from DBEDT
Note: Passenger volume figures include both visitors and residents.

Domestic by Island Month-to-Date and Year-to-Date Daily Passenger Volume

2021 Volume versus 2020 Volume
Through January 18, 2021

January 2021 (Month-to-Date through January 18)

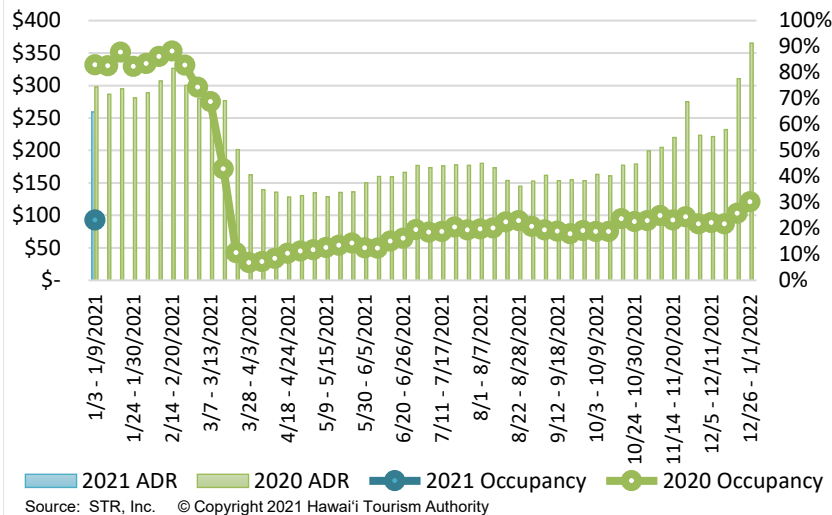
	2021	2020	Volume Change	Percent Change
Honolulu	82,986	242,300	-159,314	-65.8%
Maui County	39,456	107,138	-67,682	-63.2%
Island of Hawai'i	18,778	52,769	-33,991	-64.4%
Kaua'i	1,196	37,465	-36,269	-96.8%
Total	142,416	439,672	-297,256	-67.6%

2021 (Year-to-Date through January 18)

	2021	2020	Volume Change	Percent Change
Honolulu	82,986	242,300	-159,314	-65.8%
Maui County	39,456	107,138	-67,682	-63.2%
Island of Hawai'i	18,778	52,769	-33,991	-64.4%
Kaua'i	1,196	37,465	-36,269	-96.8%
Total	142,416	439,672	-297,256	-67.6%

Source: HVCB analysis based on data from DBEDT
Note: Passenger volume figures include both visitors and residents. Total includes other international passengers.

State of Hawai'i Hotel Performance by Week - 2021 vs 2020



Source: STR, Inc. © Copyright 2021 Hawai'i Tourism Authority

Hawaii Hotel Performance Info:

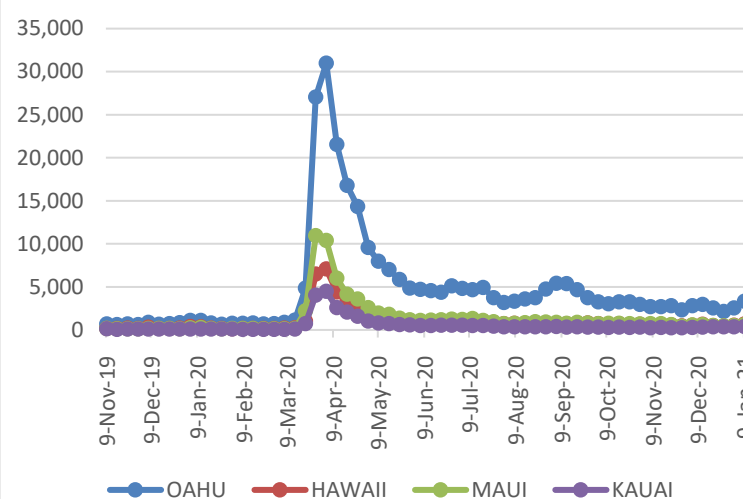
For the week of January 03 – January 09, 2021

	Occupancy	ADR	RevPAR
State of Hawaii	23.1%	\$ 259.30	\$ 59.96
Oahu	22.1%	\$ 167.13	\$ 36.88
Maui County	24.0%	\$ 448.72	\$ 107.47
Kauai County	17.7%	\$ 161.61	\$ 28.54
Island of Hawaii	28.9%	\$ 284.78	\$ 82.37

Weekly Unemployment Initial Claims: January 09, 2021

State of Hawaii	5,095
C&C of Oahu	3,301
Hawaii County	668
Maui County	620
Kauai County	364
Agent (filed in Hawaii against another state)	142

2020 Initial Weekly Unemployment Claims by Island



News Highlights

January 19, 2021

Honolulu Star-Advertiser: [Hawaii Tourism Authority spent 'exorbitant' amounts marketing to visitors as lockdowns dropped demand](#)

KITV4: [LA County records more than 1 million coronavirus cases](#)

The Maui News: [Retailers, gyms face tighter restrictions](#)

ABC News: [The Latest: China reports a few new cases of COVID-19](#)

Skift: [World Health Org Won't Endorse Proof of Vaccines for Safe International Travel](#)

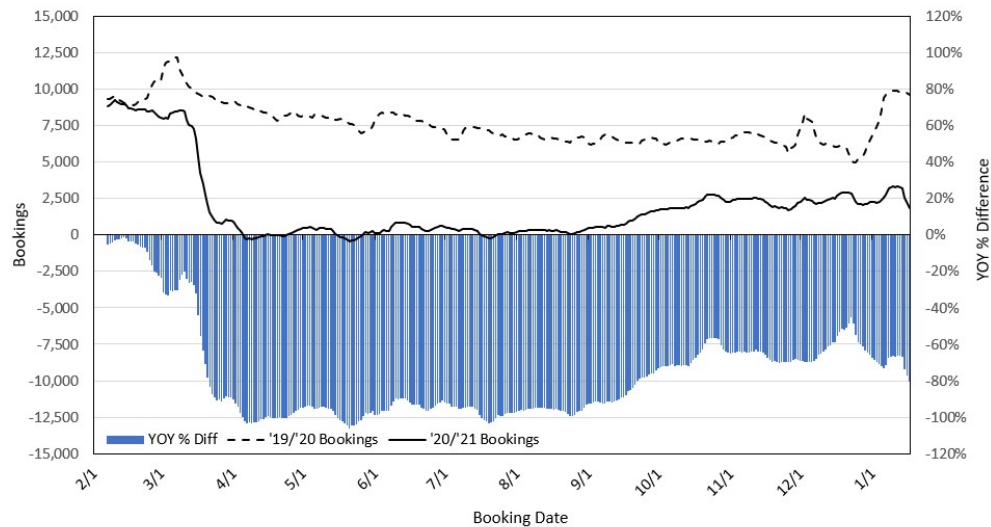
Jeffsetter Travel: [Hawaii Requires Pre-Travel Test for Vaccinated Travelers](#)

SF Gate: [Hawaiians furious mainland travelers can get vaccinated in Hawaii](#)

Travel + Leisure: [I Traveled to Maui During the COVID-19 Pandemic — Here's What It Was Really Like](#)

USA Today: [COVID-19 exposure on flights is more common than you think. The US doesn't share details, but Canada does](#)

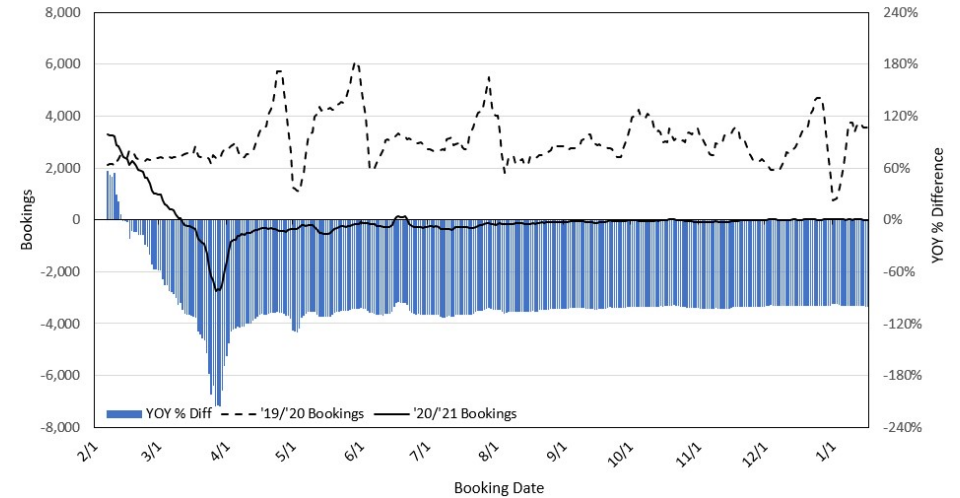
Travel Agency Bookings to Hawaii for Future Arrivals* Based on a 7-day Moving Average, as of January 17, 2021 U.S.



*Future Arrivals refers to all arrivals that are 'future' relative to the referenced booking date.
Source: Global Agency Pro

Update: Jan 17, 2021

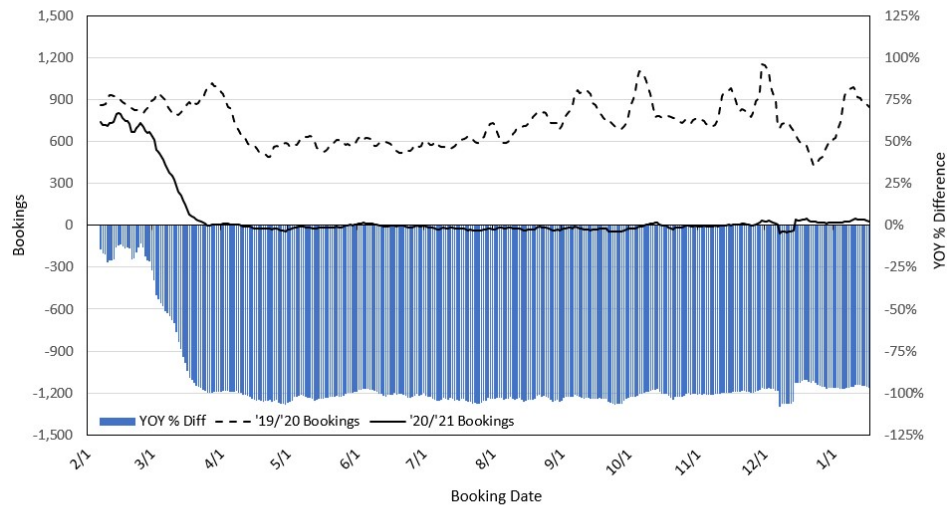
Travel Agency Bookings to Hawaii for Future Arrivals* Based on a 7-day Moving Average, as of January 17, 2021 Japan



*Future Arrivals refers to all arrivals that are 'future' relative to the referenced booking date.
Source: Global Agency Pro

Update: Jan 17, 2021

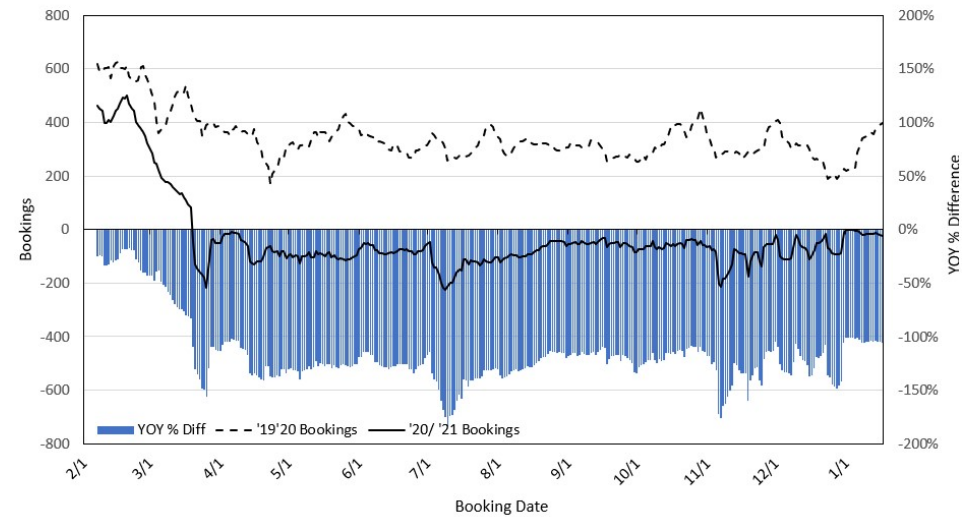
Travel Agency Bookings to Hawaii for Future Arrivals* Based on a 7-day Moving Average, as of January 17, 2021 Canada



*Future Arrivals refers to all arrivals that are 'future' relative to the referenced booking date.
Source: Global Agency Pro

Update: Jan 17, 2021

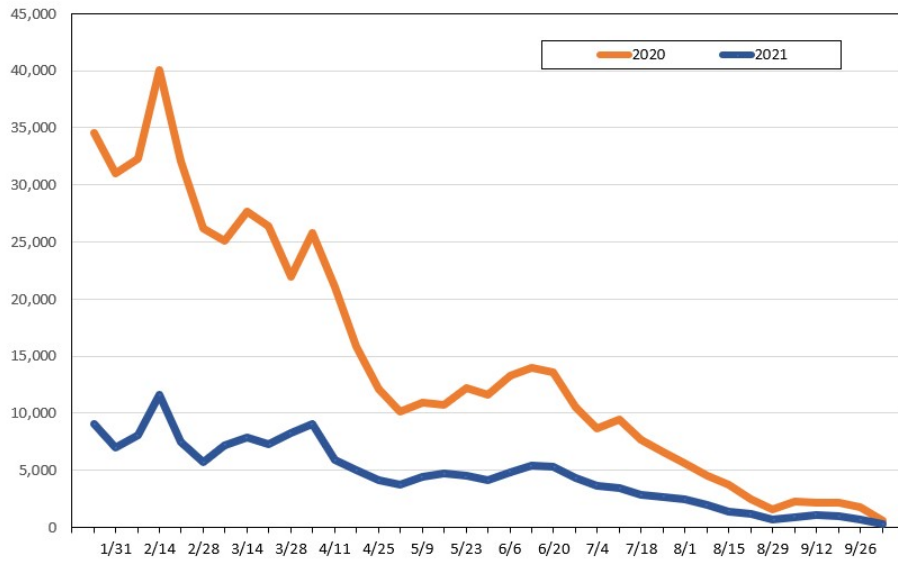
Travel Agency Bookings to Hawaii for Future Arrivals* Based on a 7-day Moving Average, as of January 17, 2021 Australia



*Future Arrivals refers to all arrivals that are 'future' relative to the referenced booking date.
Source: Global Agency Pro

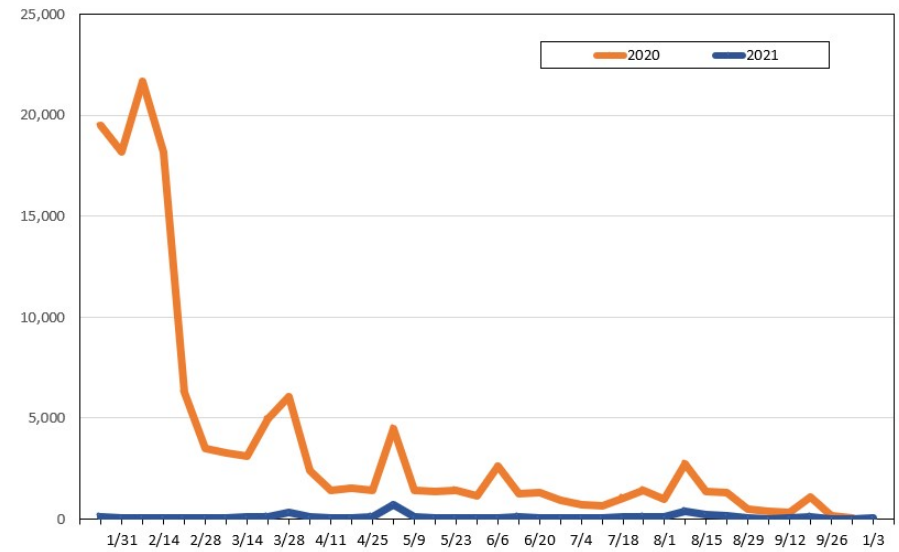
Update: Jan 17, 2021

Travel Agency Weekly Bookings for Future Travel to Hawai'i as of January 17, 2021
U.S.



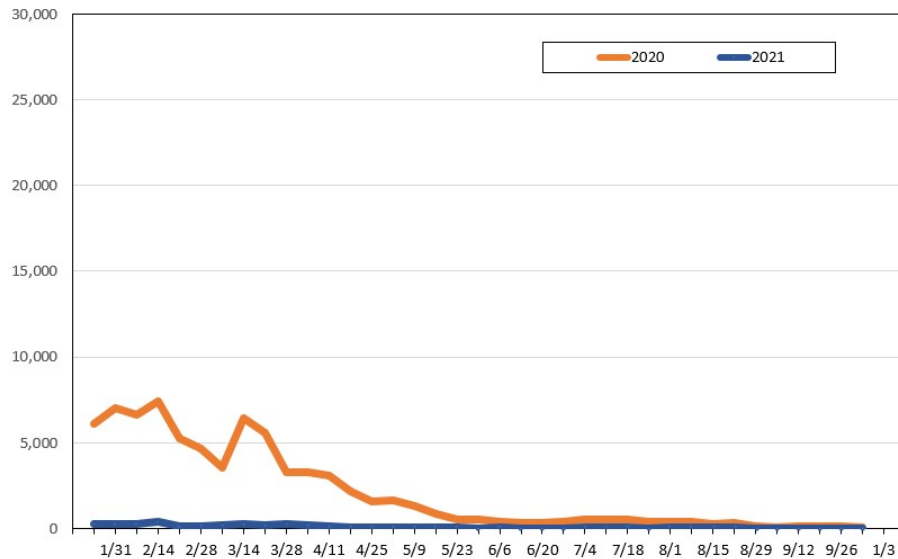
Source: Global Agency Pro, as of January 17, 2021

Travel Agency Weekly Bookings for Future Travel to Hawai'i as of January 17, 2021
Japan



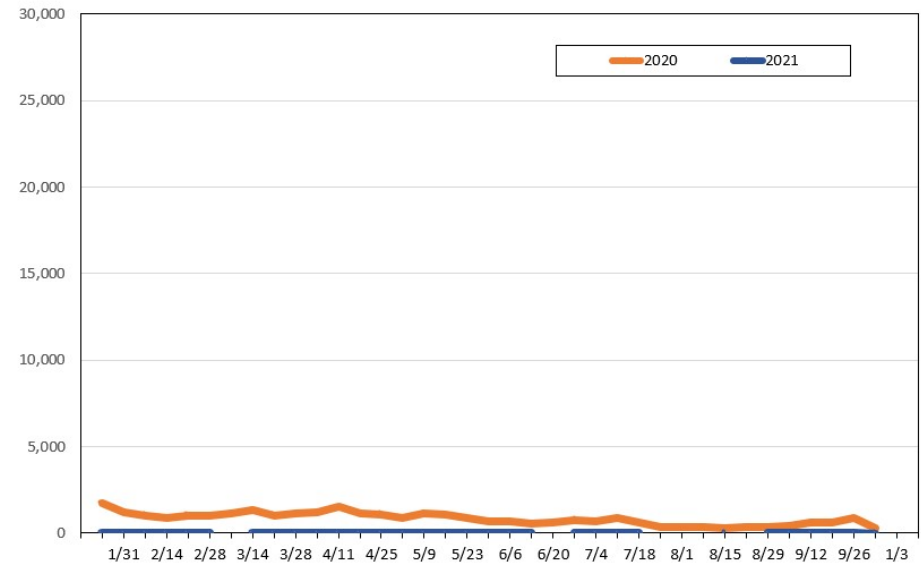
Source: Global Agency Pro, as of January 17, 2021

Travel Agency Weekly Bookings for Future Travel to Hawai'i as of January 17, 2021
Canada



Source: Global Agency Pro, as of January 17, 2021

Travel Agency Weekly Bookings for Future Travel to Hawai'i as of January 17, 2021
Australia



Source: Global Agency Pro, as of January 17, 2021