

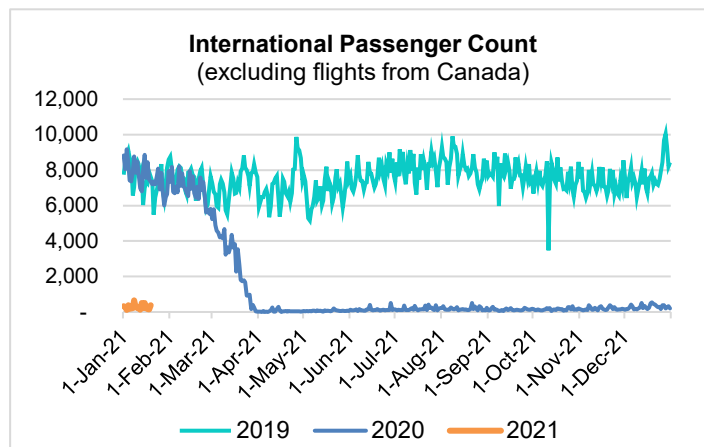
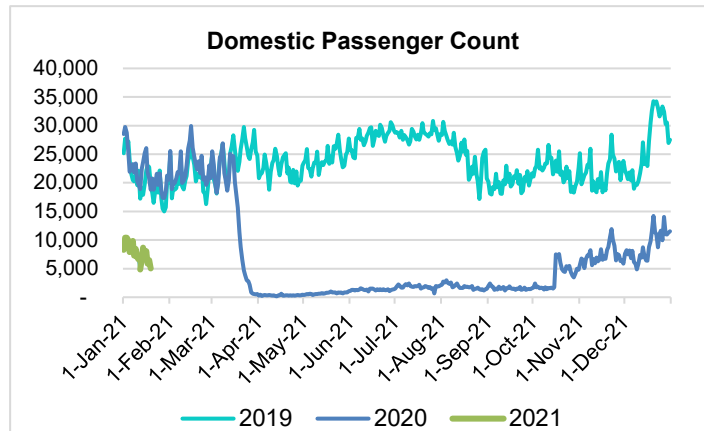
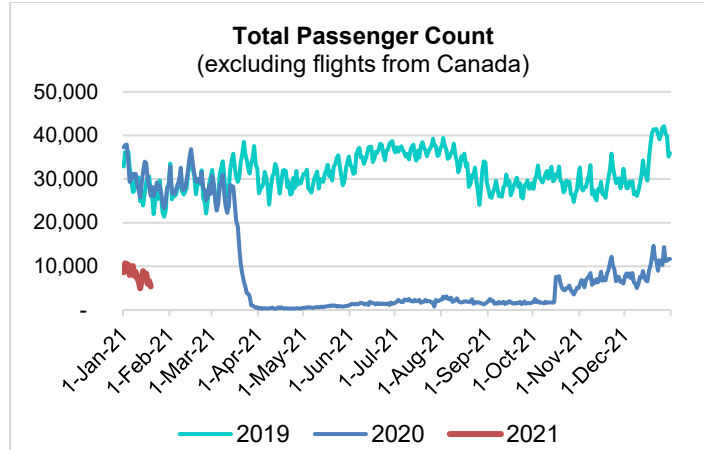
HTA COVID-19 UPDATE

(Issued: 1/20/21 @ 4:30pm)

Reason for Trip by Arrival Airport - Transpacific Screened Passengers as of 01/19/21	Honolulu (HNL)	Kahului (OGG)	Kona (KOA)	Lihue (LIH)	Grand Total
Airline Crew	356	158	80	6	600
Connecting Flight (Transit)	233	6	1	0	240
Corporate Meeting	4	0	1	0	5
Essential Worker	117	19	2	2	140
Honeymoon	1	4	5	0	10
Incentive Trip	1	1	1	0	3
Intended Resident	88	15	10	6	119
Military or Federal Government	255	0	0	1	256
Other	55	15	8	0	78
Other Business	51	16	24	2	93
Pleasure/Vacation	832	789	443	9	2,073
Returning Resident	949	110	93	10	1,162
Sports Event	1	0	1	0	2
To Attend School	12	0	1	0	13
To Get Married	5	6	0	0	11
Visiting Friends or Relatives	429	117	148	8	702
Grand Total	3,389	1,256	818	44	5,507

Source: Safe Travels program developed by the State of Hawaii Office of Enterprise Technology Services

Note: The data is preliminary and subject to change



Daily Passenger Count Table

01/19/2021	Domestic	International	Total
Oahu	3230	379	3609
Maui	1037		1037
Island of Hawaii	709		709
Kauai	36		36
State	5012	379	5391

Novel Coronavirus in Hawaii

COVID-19 Positive Cases

Cumulative totals as of 12:00pm on January 20, 2021

Total Confirmed Cases	24,620* (75 new)
Hawaii	2,092
Kauai	176
Lanai	106
Maui	1501†
Molokai	25
Oahu	20,067
Out of State	653
Pending	0
Required Hospitalization	1620‡
Hawaii Deaths	325
Cases in the past 14 days	2,127*

Footnotes for COVID-19 Cases

*As a result of updated information, one case on Oahu was removed from the counts.

**Using cases reported in the past 14 days provides a rough approximation of the number of cases currently meeting criteria for isolation. This proxy number for "active cases" resolves classification issues for cases unable to be reached or who are out of jurisdiction, for whom precise release from isolation date may not be possible to determine. It is also not influenced by lags in data entry. (This total does not include Hawaii residents diagnosed outside of Hawaii)

†One case is a Lanai resident whose exposure is on Maui Island and who will be remaining on Maui Island for the interim.

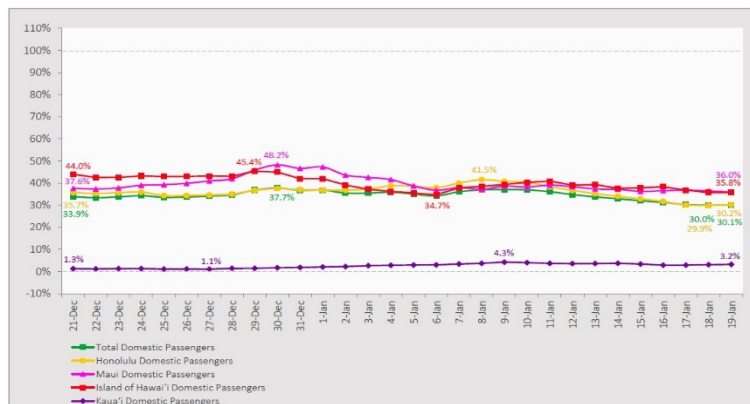
‡Includes Hawaii residents hospitalized out of state.

§Includes cases that meet isolation release criteria (Isolation should be maintained until at least 24 hours after resolution of fever and myalgia without the use of antipyretics OR at least 10 days have passed since symptom onset, whichever is longer). (The cases that have died and one case that has left the jurisdiction have been removed from these counts). Positive cases include confirmed cases, and Hawaii residents and non-residents; data are preliminary and subject to change. Note that CDC provides case counts according to states of residence.

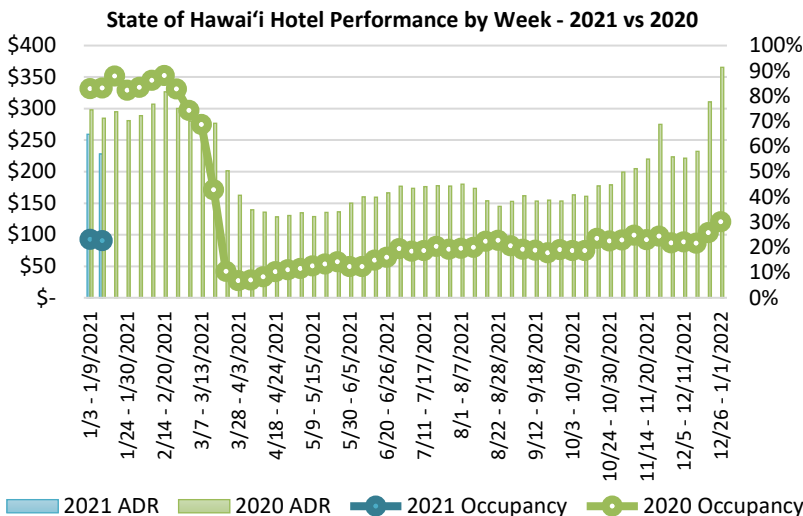
7-Day Domestic by Island Moving Average Daily Passenger Volume

2021 Volume as Percentage of 2020 Volume

Through January 19, 2021



Source: HVCB analysis based on data from DBEDT
Note: Passenger volume figures include both visitors and residents.



Source: STR, Inc. © Copyright 2021 Hawai'i Tourism Authority

Hawaii Hotel Performance Info:

For the week of January 10 – January 16, 2021

	Occupancy	ADR	RevPAR
State of Hawaii	22.6%	\$ 228.05	\$ 51.61
Oahu	22.1%	\$ 166.84	\$ 36.80
Maui County	20.2%	\$ 388.42	\$ 78.32
Kauai County	21.7%	\$ 164.10	\$ 35.58
Island of Hawaii	30.4%	\$ 234.22	\$ 71.16

Domestic by Island Month-to-Date and Year-to-Date Daily Passenger Volume

2021 Volume versus 2020 Volume

Through January 19, 2021

January 2021 (Month-to-Date through January 19)

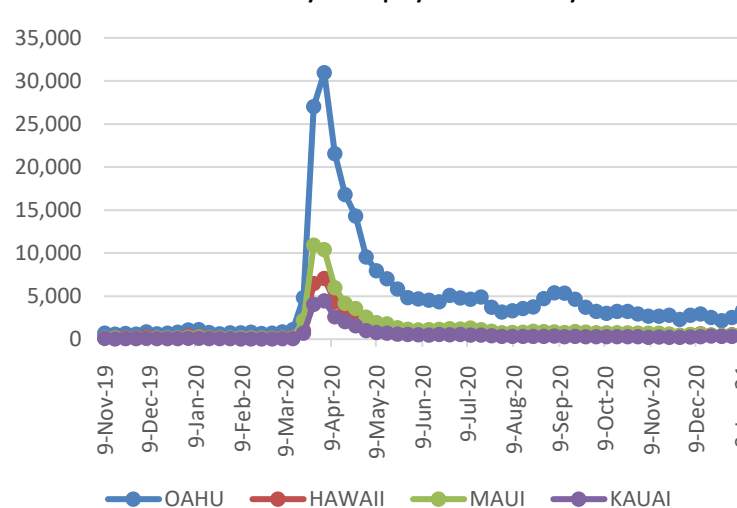
	2021	2020	Volume Change	Percent Change
Honolulu	86,216	254,505	-168,289	-66.1%
Maui County	39,870	112,342	-72,472	-64.5%
Island of Hawai'i	19,487	55,395	-35,908	-64.8%
Kauai	1,232	39,287	-38,055	-96.9%
Total	146,805	461,529	-314,724	-68.2%

2021 (Year-to-Date through January 19)

	2021	2020	Volume Change	Percent Change
Honolulu	86,216	254,505	-168,289	-66.1%
Maui County	39,870	112,342	-72,472	-64.5%
Island of Hawai'i	19,487	55,395	-35,908	-64.8%
Kauai	1,232	39,287	-38,055	-96.9%
Total	146,805	461,529	-314,724	-68.2%

Source: HVCB analysis based on data from DBEDT
Note: Passenger volume figures include both visitors and residents. Total includes other international passengers.

2020 Initial Weekly Unemployment Claims by Island



Weekly Unemployment Initial Claims: January 09, 2021

State of Hawaii	5,095
C&C of Oahu	3,301
Hawaii County	668
Maui County	620
Kauai County	364
Agent (filed in Hawaii against another state)	142

News Highlights

January 20, 2021

Honolulu Star Advertiser: [Kauai employment suffers under restrictive travel policies](#)

Hawaii News Now: [After backlash, state asks partners to vaccinate only kupuna, not caregivers](#)

Hawaii News Now: [Maui Memorial says postponing 5,000 appointments after supply drop a "huge disappointment"](#)

Hawaii Tribune Herald: ["Demand far exceeds supply": Ige, others urge patience about vaccinations](#)

West Hawaii Today: [Mobile COVID testing initiative aimed at screening underserved areas of Hawaii County](#)

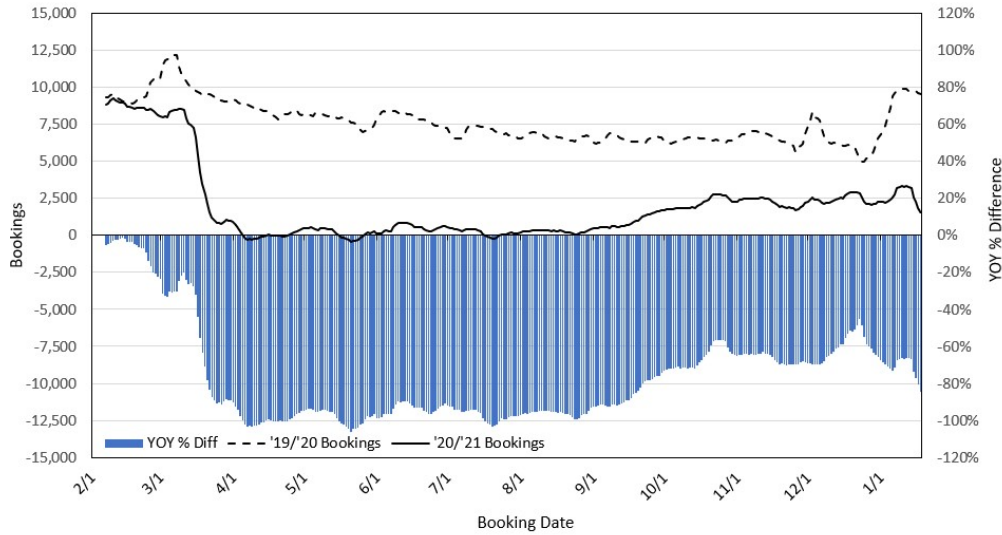
Eat This, Not That: [CDC Predicts More COVID Deaths in These States](#)

Travel Pulse: [How Will the Incoming Biden Administration Affect the Travel Industry?](#)

Travel Weekly: [Travel groups say it's critical to get workers vaccinated quickly](#)

The Points Guy: [Responsible travel in 2021: 7 important steps to help keep yourself and others safe](#)

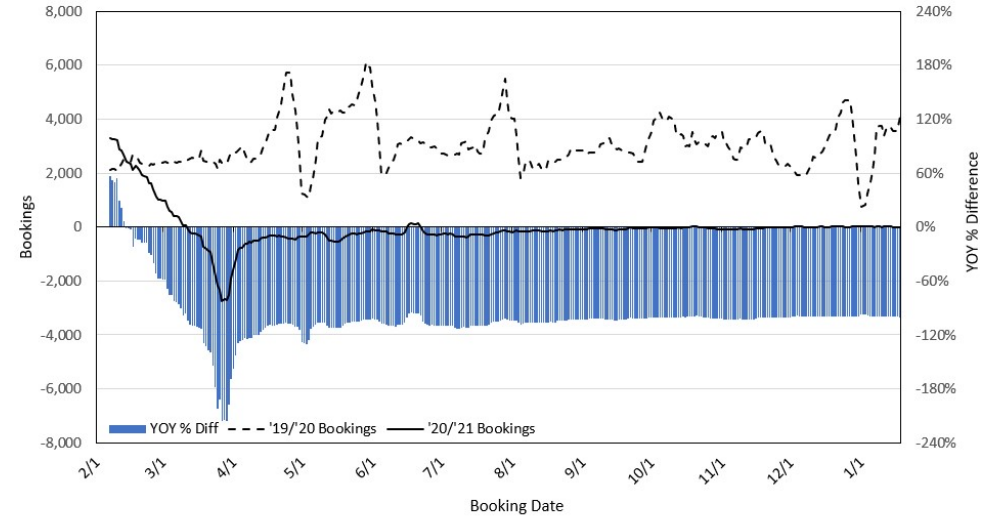
Travel Agency Bookings to Hawaii for Future Arrivals* Based on a 7-day Moving Average, as of January 18, 2021 U.S.



*Future Arrivals refers to all arrivals that are 'future' relative to the referenced booking date.
Source: Global Agency Pro

Update: Jan 18, 2021

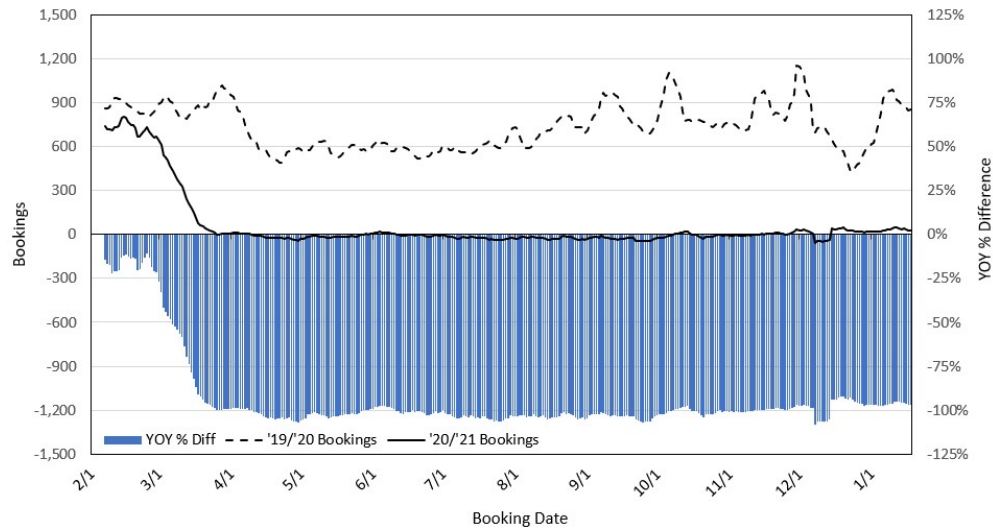
Travel Agency Bookings to Hawaii for Future Arrivals* Based on a 7-day Moving Average, as of January 18, 2021 Japan



*Future Arrivals refers to all arrivals that are 'future' relative to the referenced booking date.
Source: Global Agency Pro

Update: Jan 18, 2021

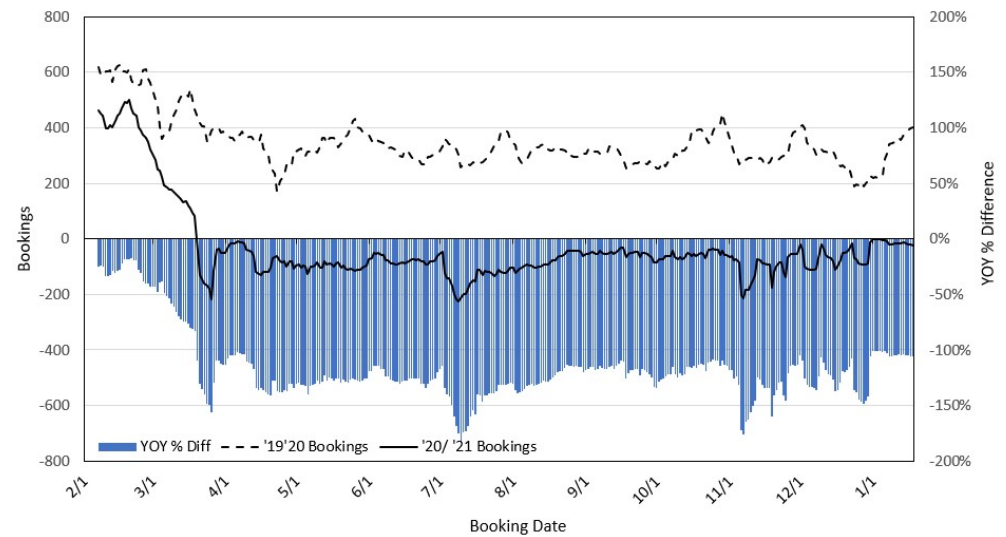
Travel Agency Bookings to Hawaii for Future Arrivals* Based on a 7-day Moving Average, as of January 18, 2021 Canada



*Future Arrivals refers to all arrivals that are 'future' relative to the referenced booking date.
Source: Global Agency Pro

Update: Jan 18, 2021

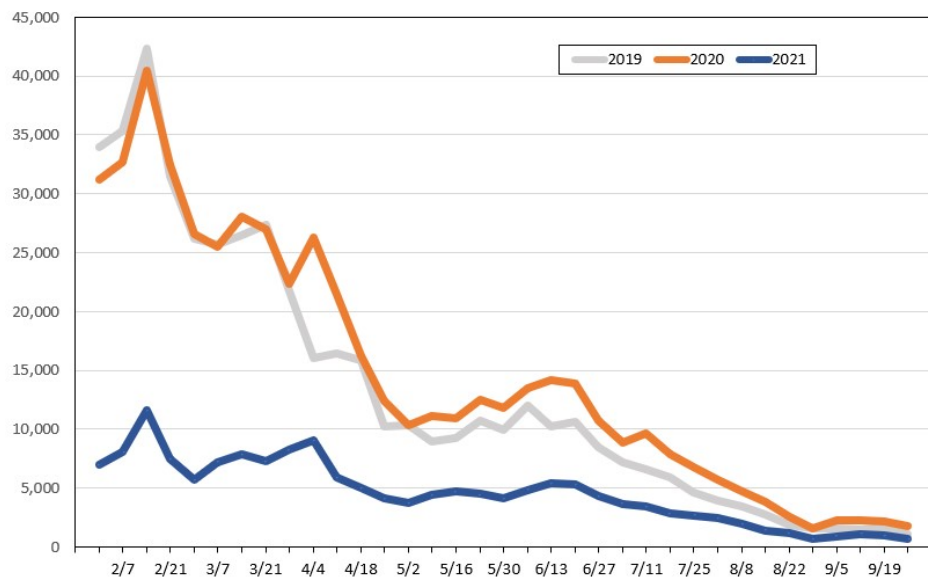
Travel Agency Bookings to Hawaii for Future Arrivals* Based on a 7-day Moving Average, as of January 18, 2021 Australia



*Future Arrivals refers to all arrivals that are 'future' relative to the referenced booking date.
Source: Global Agency Pro

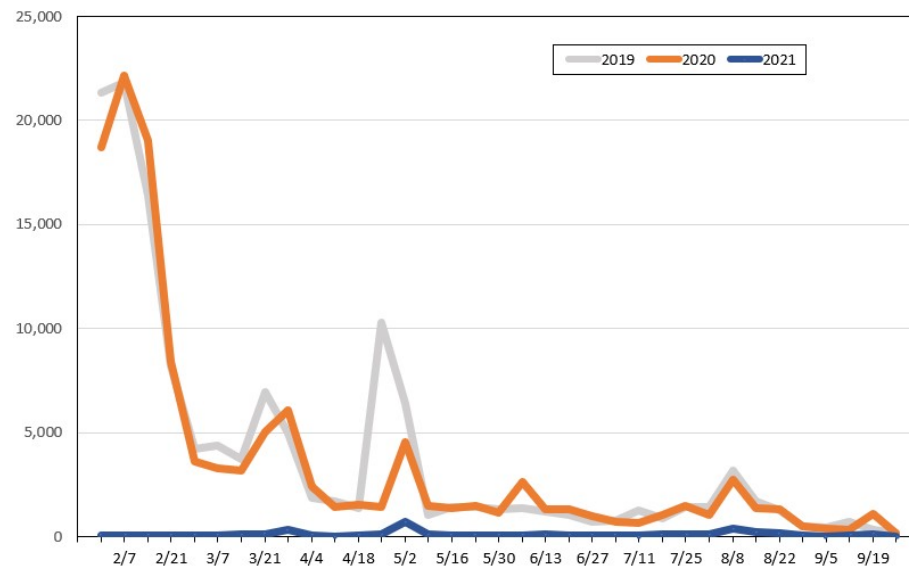
Update: Jan 18, 2021

Travel Agency Weekly Bookings for Future Travel to Hawai'i as of January 18, 2021
U.S.



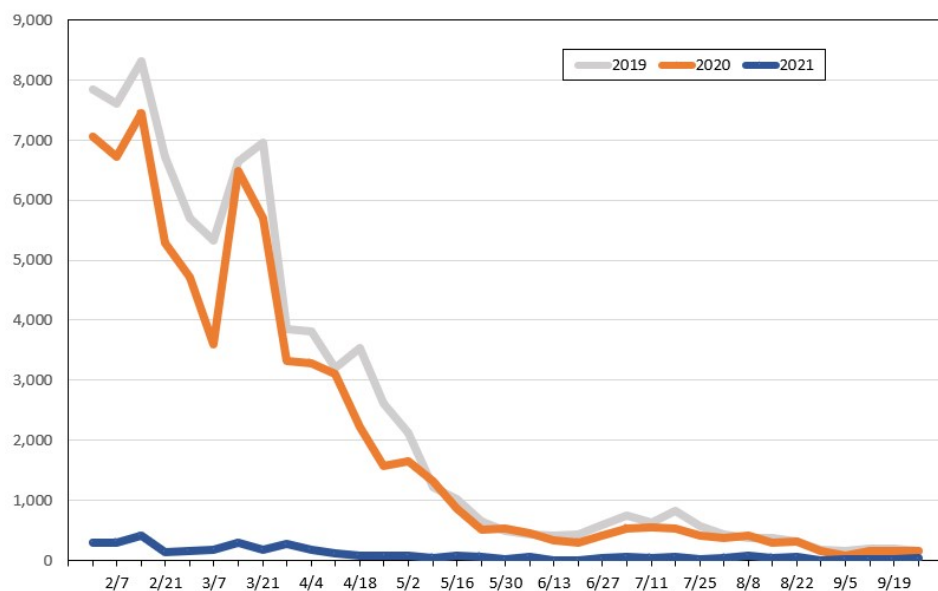
Source: Global Agency Pro, as of January 18, 2021

Travel Agency Weekly Bookings for Future Travel to Hawai'i as of January 18, 2021
Japan



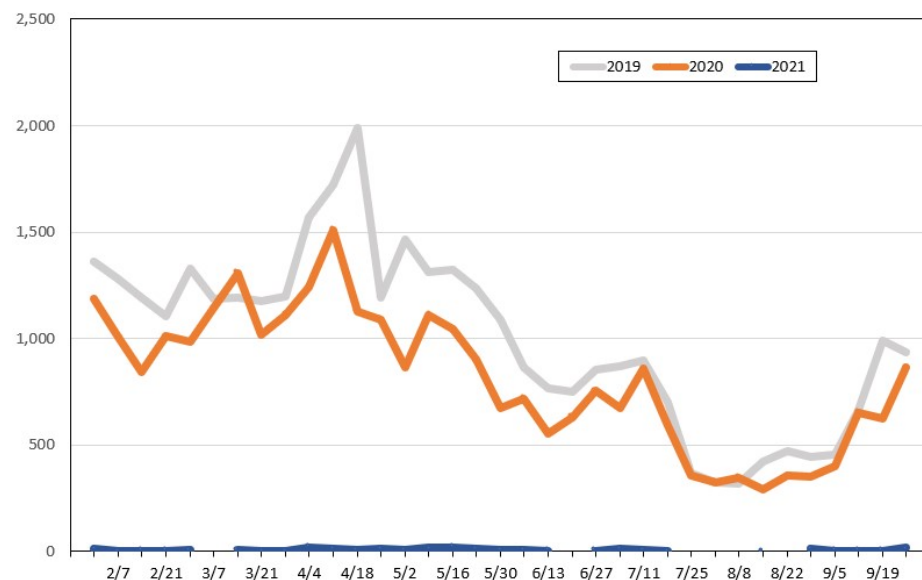
Source: Global Agency Pro, as of January 18, 2021

Travel Agency Weekly Bookings for Future Travel to Hawai'i as of January 18, 2021
Canada



Source: Global Agency Pro, as of January 18, 2021

Travel Agency Weekly Bookings for Future Travel to Hawai'i as of January 18, 2021
Australia



Source: Global Agency Pro, as of January 18, 2021