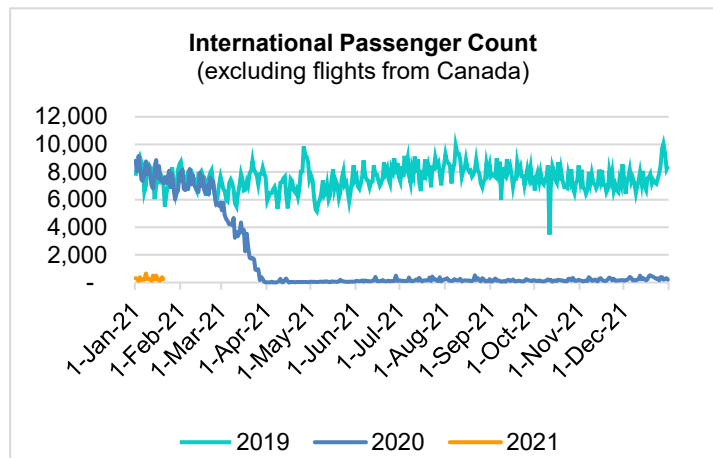
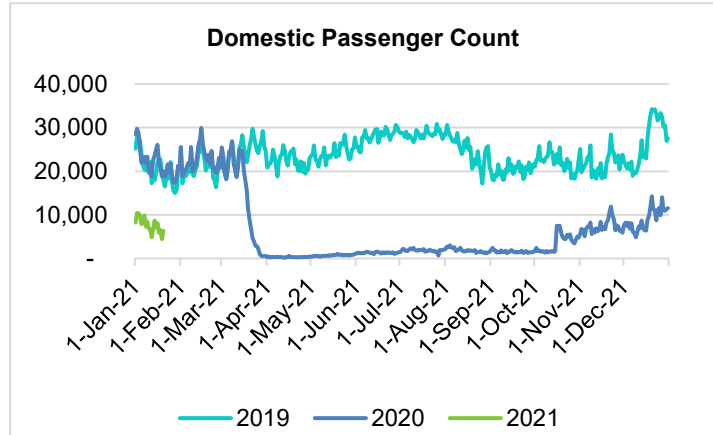
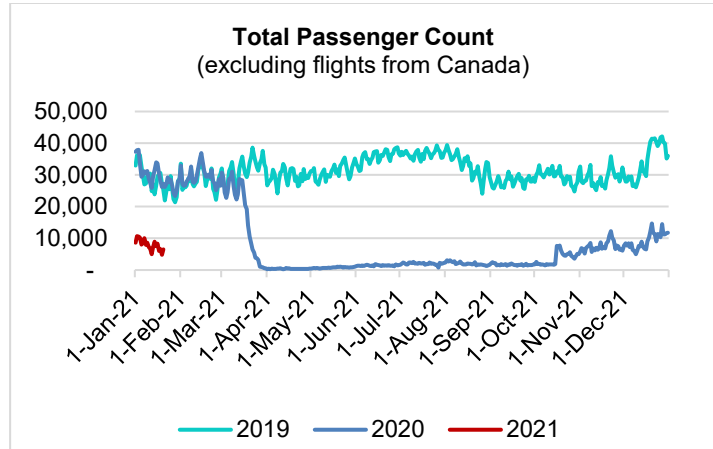


HTA COVID-19 UPDATE

(Issued: 1/21/21 @ 4:30pm)

Reason for Trip by Arrival Airport - Transpacific Screened Passengers as of 01/20/21	Honolulu (HNL)	Kahului (OGG)	Kona (KOA)	Lihue (LIH)	Grand Total
Airline Crew	363	180	85	7	635
Connecting Flight (Transit)	275	12	4	1	292
Corporate Meeting	3	4	2	0	9
Essential Worker	89	30	8	3	130
Honeymoon	3	3	2	0	8
Incentive Trip	1	2	0	0	3
Intended Resident	105	23	16	0	144
Military or Federal Government	186	2	1	3	192
Other	49	24	9	0	82
Other Business	61	23	14	2	100
Pleasure/Vacation	1,363	1,542	476	25	3,406
Returning Resident	789	132	77	17	1,015
Sports Event	18	0	0	0	18
To Attend School	15	0	1	0	16
To Get Married	7	2	0	0	9
Transit	1	0	0	0	1
Visiting Friends or Relatives	503	147	126	7	783
Grand Total	3,831	2,126	821	65	6,843

Source: Safe Travels program developed by the State of Hawaii Office of Enterprise Technology Services
Note: The data is preliminary and subject to change



Daily Passenger Count Table

01/20/2021	Domestic	International	Total
Oahu	3668	254	3922
Maui	1837		1837
Island of Hawaii	743		743
Kauai	54		54
State	6302	254	6556

Novel Coronavirus in Hawaii

COVID-19 Positive Cases

Cumulative totals as of 12:00pm on January 21, 2021

Total Confirmed Cases	24,739* (119 new)
Hawaii	2,108
Kauai	176
Lanai	106
Maui	1531†
Molokai	25
Oahu	20,133
Out of State	660
Pending	0
Required Hospitalization	1642‡
Hawaii Deaths	328
Cases in the past 14 days	1,953*

Footnotes for COVID-19 Cases

*As a result of updated information, one case on Oahu was removed from the counts.

**Using cases reported in the past 14 days provides a rough approximation of the number of cases currently meeting criteria for isolation. This proxy number for "active cases" resolves classification issues for cases unable to be reached or who are out of jurisdiction, for whom precise release from isolation date may not be possible to determine. It is also not influenced by lags in data entry. (This total does not include Hawaii residents diagnosed outside of Hawaii)

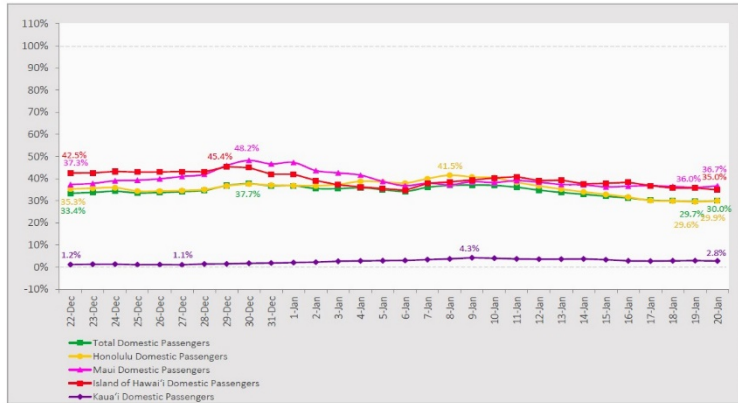
†One case is a Lanai resident whose exposure is on Maui Island and who will be remaining on Maui Island for the interim.

#Includes Hawaii residents hospitalized out of state.

§Includes cases that meet isolation release criteria (Isolation should be maintained until at least 24 hours after resolution of fever and myalgia without the use of antipyretics OR at least 10 days have passed since symptom onset, whichever is longer). (The cases that have died and one case that has left the jurisdiction have been removed from these counts). Positive cases include confirmed cases, and Hawaii residents and non-residents; data are preliminary and subject to change. Note that CDC provides case counts according to states of residence.

7-Day Domestic by Island Moving Average Daily Passenger Volume

2021 Volume as Percentage of 2020 Volume
Through January 20, 2021



Source: HVCB analysis based on data from DBEDT
Note: Passenger volume figures include both visitors and residents.

Domestic by Island Month-to-Date and Year-to-Date Daily Passenger Volume

2021 Volume versus 2020 Volume
Through January 20, 2021

January 2021 (Month-to-Date through January 20)

	2021	2020	Volume Change	Percent Change
Honolulu	89,311	266,449	-177,138	-66.5%
Maui County	41,707	116,828	-75,121	-64.3%
Island of Hawai'i	20,230	58,084	-37,854	-65.2%
Kaua'i	1,249	40,914	-39,665	-96.9%
Total	152,497	482,275	-329,778	-68.4%

2021 (Year-to-Date through January 20)

	2021	2020	Volume Change	Percent Change
Honolulu	89,311	266,449	-177,138	-66.5%
Maui County	41,707	116,828	-75,121	-64.3%
Island of Hawai'i	20,230	58,084	-37,854	-65.2%
Kaua'i	1,249	40,914	-39,665	-96.9%
Total	152,497	482,275	-329,778	-68.4%

Source: HVCB analysis based on data from DBEDT
Note: Passenger volume figures include both visitors and residents. Total includes other international passengers.

News Highlights

January 21, 2021

Hawaii News Now: [If you're eligible for a vaccine, here is how you can get an appointment](#)

KHON2: [Temporary vaccine shortage delays Maui's first dose appointments](#)

West Hawaii Today: [Hawaii Island adds four new COVID-19 cases](#)

The Garden Island: [Sheraton Kauai Resort furloughed employees get food help](#)

Travel Pulse: [Hawaii Likely To Let Vaccinated Travelers Skip COVID-19 Quarantine, Testing](#)

SF Gate: [Hawaii mobile virus testing van reaches underserved areas](#)

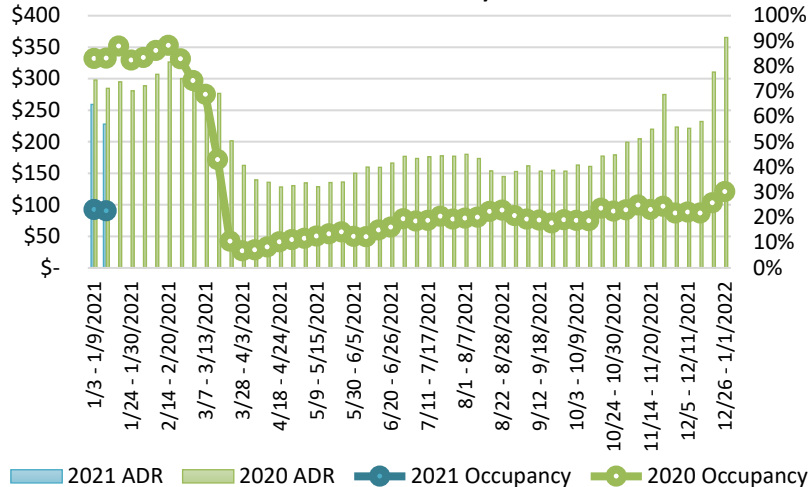
The Wall Street Journal: [A Year in, Covid-19 Cases Have Reached Every U.S. County](#)

Skift: [Only 28 Percent of Americans Traveled in December: New Skift Research Travel Tracker](#)

Travel Weekly: [Resorts offering guests a chance to rebound, recharge](#)

USA Today: [Kauai businesses, reliant on tourists, struggle under confusing coronavirus travel rules](#)

State of Hawai'i Hotel Performance by Week - 2021 vs 2020



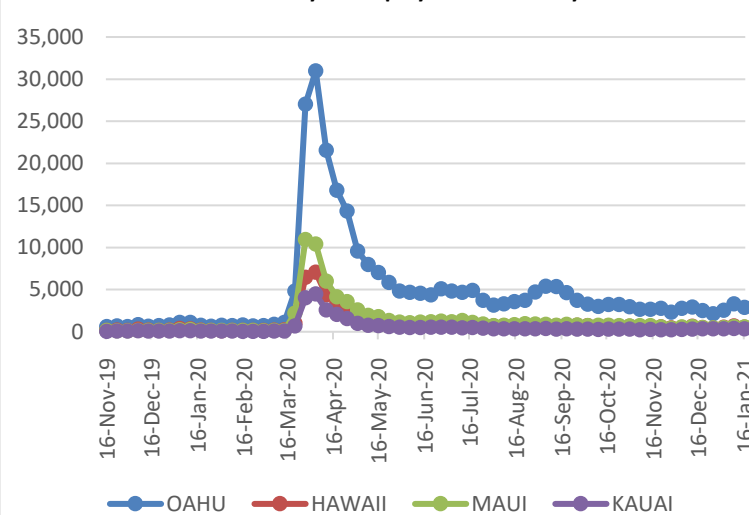
Source: STR, Inc. © Copyright 2021 Hawai'i Tourism Authority

Hawaii Hotel Performance Info:

For the week of January 10 – January 16, 2021

	Occupancy	ADR	RevPAR
State of Hawaii	22.6%	\$ 228.05	\$ 51.61
Oahu	22.1%	\$ 166.84	\$ 36.80
Maui County	20.2%	\$ 388.42	\$ 78.32
Kauai County	21.7%	\$ 164.10	\$ 35.58
Island of Hawaii	30.4%	\$ 234.22	\$ 71.16

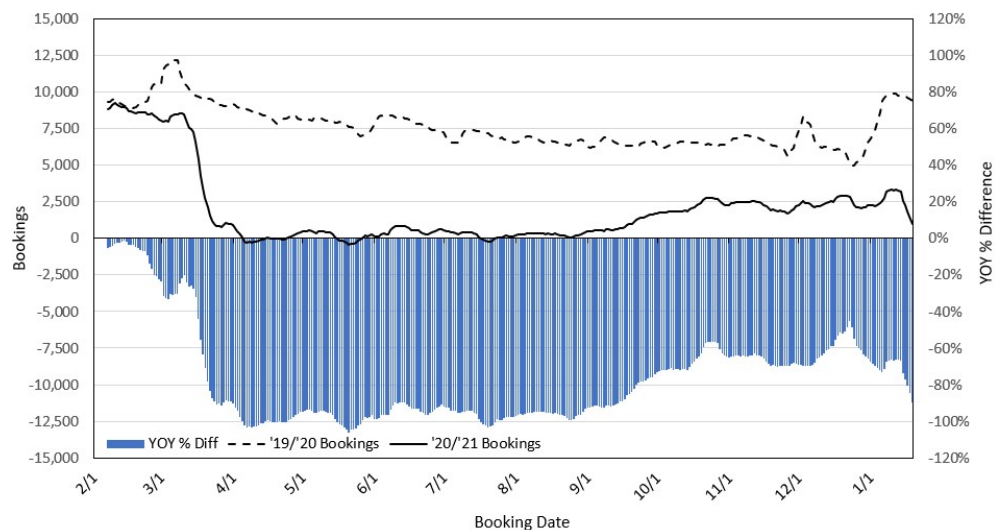
2021 Initial Weekly Unemployment Claims by Island



Weekly Unemployment Initial Claims: January 16, 2021

State of Hawaii	4,527
C&C of Oahu	2,884
Hawaii County	533
Maui County	572
Kauai County	356
Agent (filed in Hawaii against another state)	182

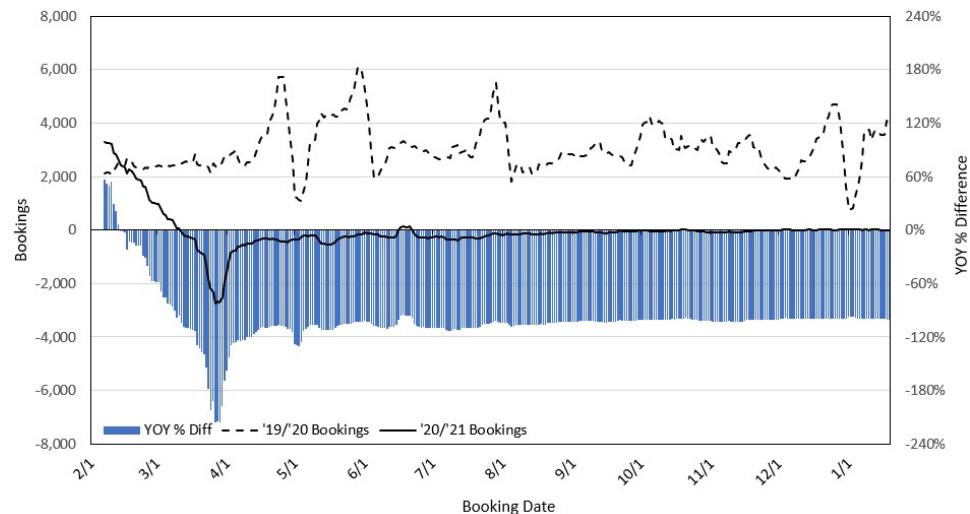
Travel Agency Bookings to Hawaii for Future Arrivals* Based on a 7-day Moving Average, as of January 19, 2021 U.S.



*Future Arrivals refers to all arrivals that are 'future' relative to the referenced booking date.
Source: Global Agency Pro

Update: Jan 19, 2021

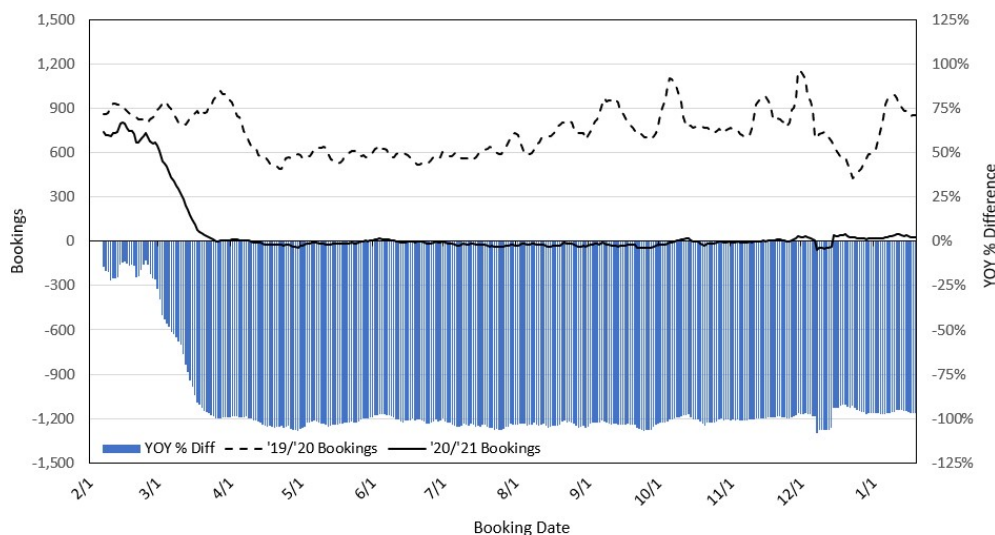
Travel Agency Bookings to Hawaii for Future Arrivals* Based on a 7-day Moving Average, as of January 19, 2021 Japan



*Future Arrivals refers to all arrivals that are 'future' relative to the referenced booking date.
Source: Global Agency Pro

Update: Jan 19, 2021

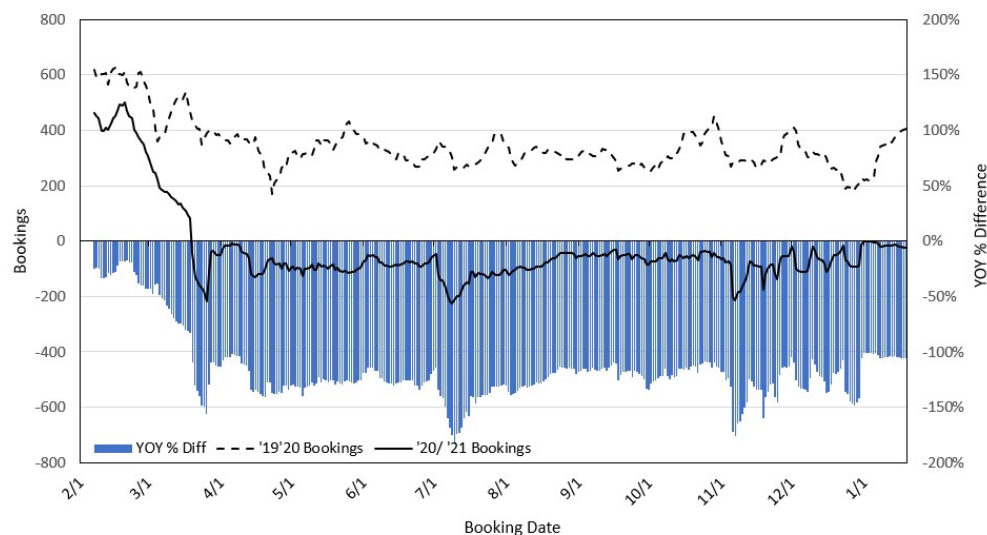
Travel Agency Bookings to Hawaii for Future Arrivals* Based on a 7-day Moving Average, as of January 19, 2021 Canada



*Future Arrivals refers to all arrivals that are 'future' relative to the referenced booking date.
Source: Global Agency Pro

Update: Jan 19, 2021

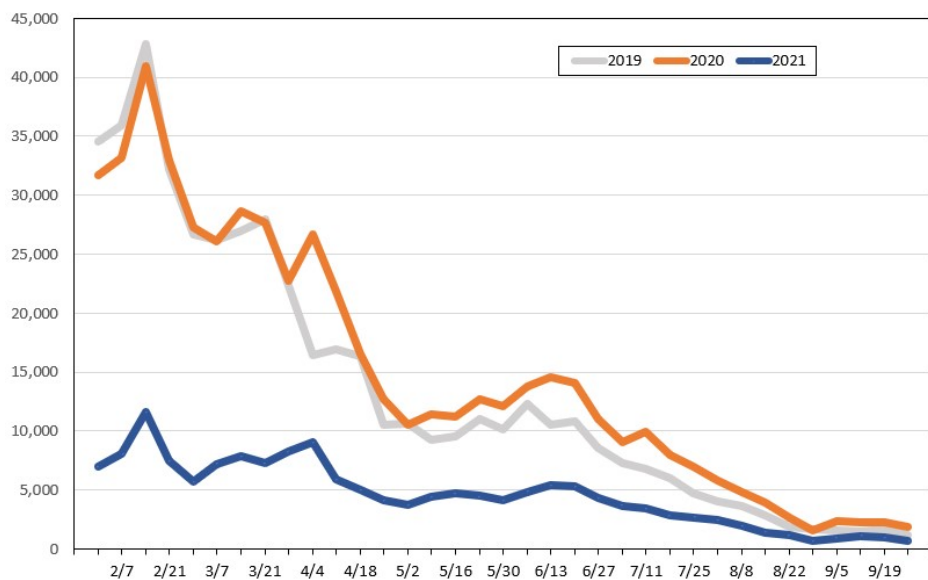
Travel Agency Bookings to Hawaii for Future Arrivals* Based on a 7-day Moving Average, as of January 19, 2021 Australia



*Future Arrivals refers to all arrivals that are 'future' relative to the referenced booking date.
Source: Global Agency Pro

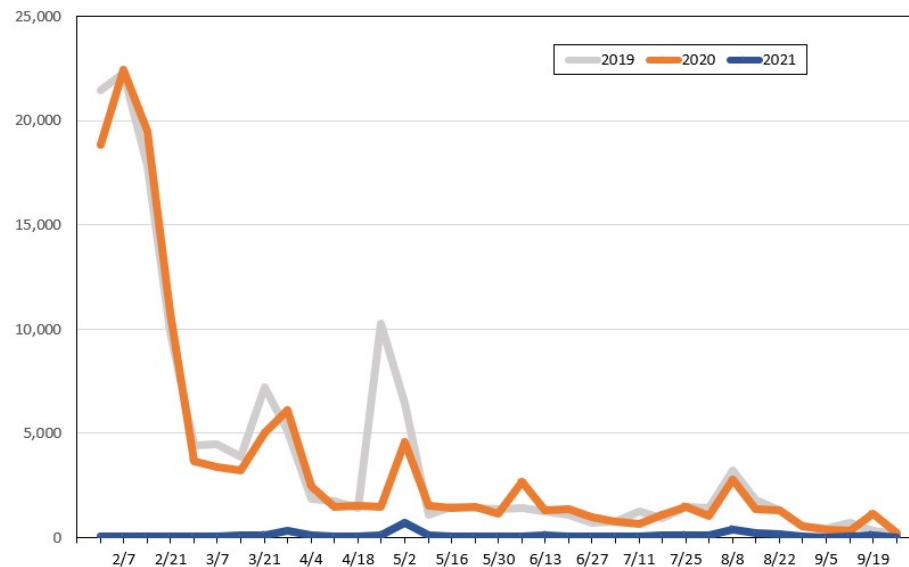
Update: Jan 19, 2021

Travel Agency Weekly Bookings for Future Travel to Hawai'i as of January 19, 2021
U.S.



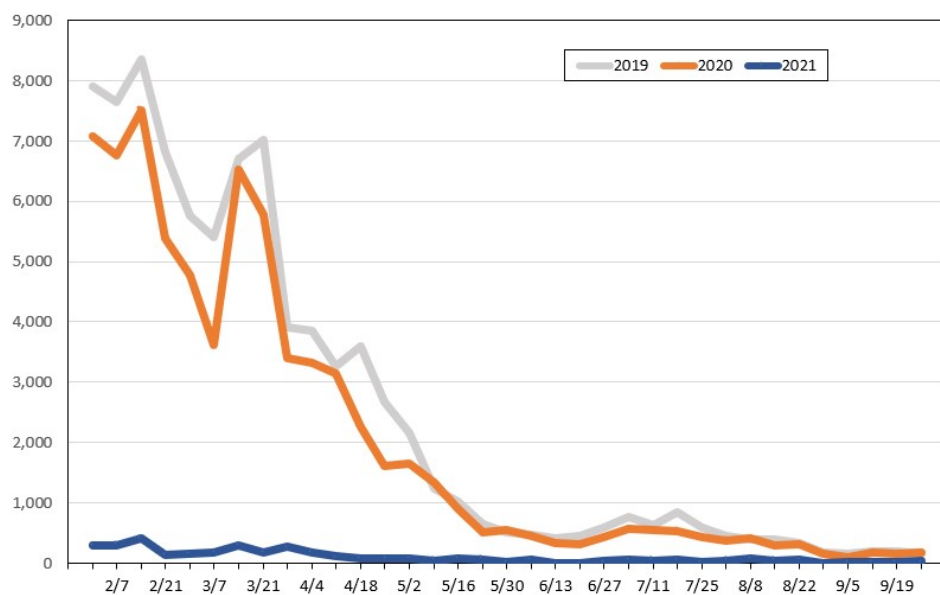
Source: Global Agency Pro, as of January 19, 2021

Travel Agency Weekly Bookings for Future Travel to Hawai'i as of January 19, 2021
Japan



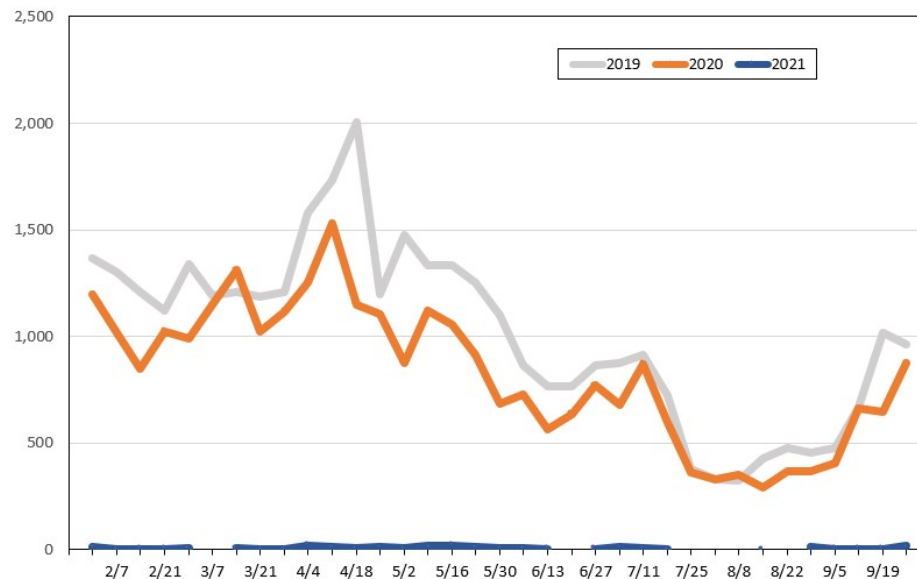
Source: Global Agency Pro, as of January 19, 2021

Travel Agency Weekly Bookings for Future Travel to Hawai'i as of January 19, 2021
Canada



Source: Global Agency Pro, as of January 19, 2021

Travel Agency Weekly Bookings for Future Travel to Hawai'i as of January 19, 2021
Australia



Source: Global Agency Pro, as of January 19, 2021