

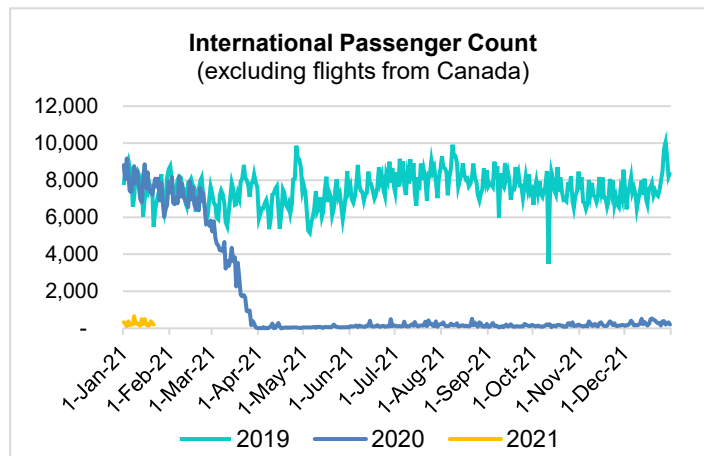
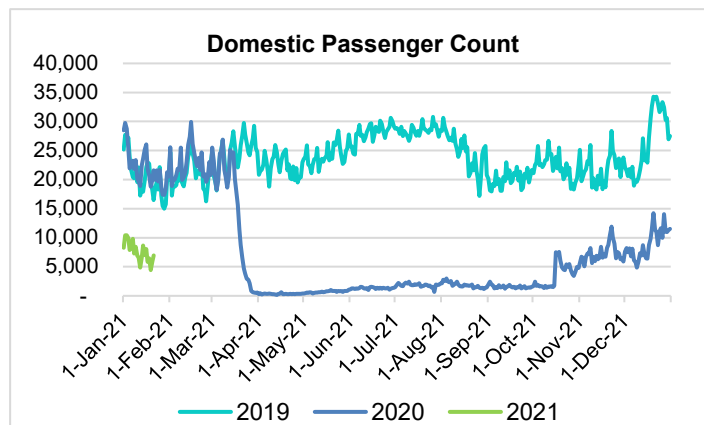
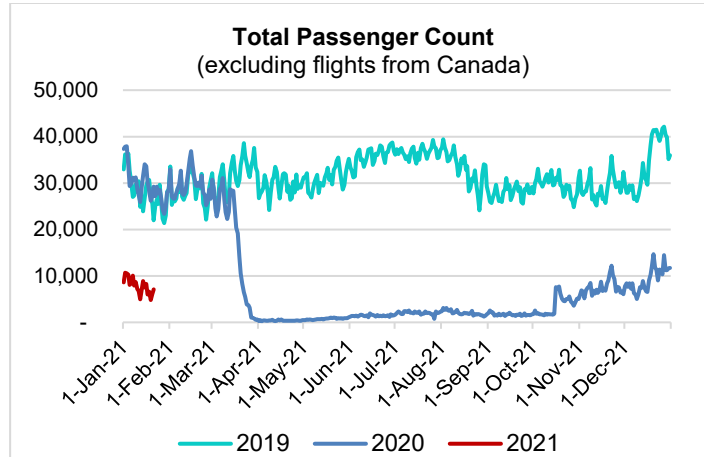
HTA COVID-19 UPDATE

(Issued: 1/22/21 @ 4:30pm)

Reason for Trip by Arrival Airport - Transpacific Screened Passengers as of 01/21/21	Honolulu (HNL)	Kahului (OGG)	Kona (KOA)	Lihue (LIH)	Grand Total
Airline Crew	410	174	107	14	705
Connecting Flight (Transit)	306	12	0	3	321
Corporate Meeting	4	0	0	0	4
Essential Worker	74	16	4	5	99
Honeymoon	6	4	0	1	11
Incentive Trip	2	0	1	0	3
Intended Resident	103	18	18	0	139
Military or Federal Government	102	0	0	4	106
Other	70	19	5	0	94
Other Business	55	34	17	5	111
Pleasure/Vacation	1,863	1,728	643	25	4,259
Returning Resident	772	107	122	29	1,030
To Attend School	26	0	0	0	26
To Get Married	6	8	0	0	14
Transit	1	0	0	0	1
Visiting Friends or Relatives	820	246	200	9	1,275
Grand Total	4,620	2,366	1,117	95	8,198

Source: Safe Travels program developed by the State of Hawaii Office of Enterprise Technology Services

Note: The data is preliminary and subject to change



Daily Passenger Count Table

01/21/2021	Domestic	International	Total
Oahu	3872	195	4067
Maui	2071		2071
Island of Hawaii	951		951
Kauai	40		40
State	6934	195	7129

Novel Coronavirus in Hawaii

COVID-19 Positive Cases

Cumulative totals as of 12:00pm on January 22, 2021

Total Confirmed Cases	24,870* (132 new)
Hawaii	2,113
Kauai	177
Lanai	106
Maui	1550†
Molokai	25
Oahu	20,230
Out of State	669
Pending	0
Required Hospitalization	1647‡
Hawaii Deaths	332
Cases in the past 14 days	1,838*

Footnotes for COVID-19 Cases

* As a result of updated information, one case on Oahu was recategorized to Kauai, and one case on Oahu was removed from the counts.

**Using cases reported in the past 14 days provides a rough approximation of the number of cases currently meeting criteria for isolation. This proxy number for "active cases" resolves classification issues for cases unable to be reached or who are out of jurisdiction, for whom precise release from isolation date may not be possible to determine. It is also not influenced by lags in data entry. (This total does not include Hawaii residents diagnosed outside of Hawaii)

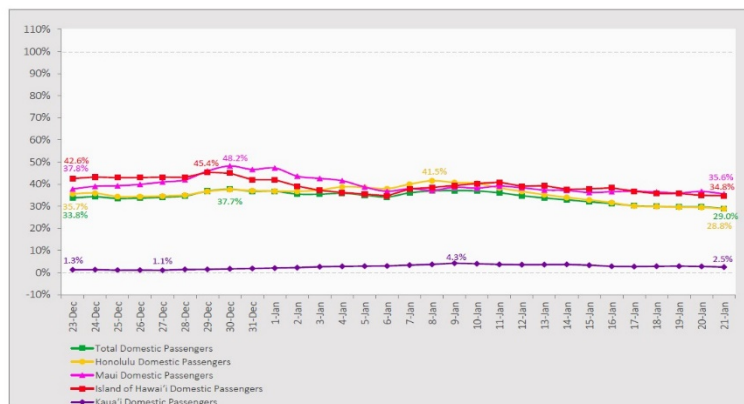
†One case is a Lanai resident whose exposure is on Maui Island and who will be remaining on Maui Island for the interim.

‡Includes Hawaii residents hospitalized out of state.

§Includes cases that meet isolation release criteria (Isolation should be maintained until at least 24 hours after resolution of fever and myalgia without the use of antipyretics OR at least 10 days have passed since symptom onset, whichever is longer). (The cases that have died and one case that has left the jurisdiction have been removed from these counts). Positive cases include confirmed cases, and Hawaii residents and non-residents; data are preliminary and subject to change. Note that CDC provides case counts according to states of residence.

7-Day Domestic by Island Moving Average Daily Passenger Volume

2021 Volume as Percentage of 2020 Volume
Through January 21, 2021



Source: HVCB analysis based on data from DBEDT
Note: Passenger volume figures include both visitors and residents.

Domestic by Island Month-to-Date and Year-to-Date Daily Passenger Volume

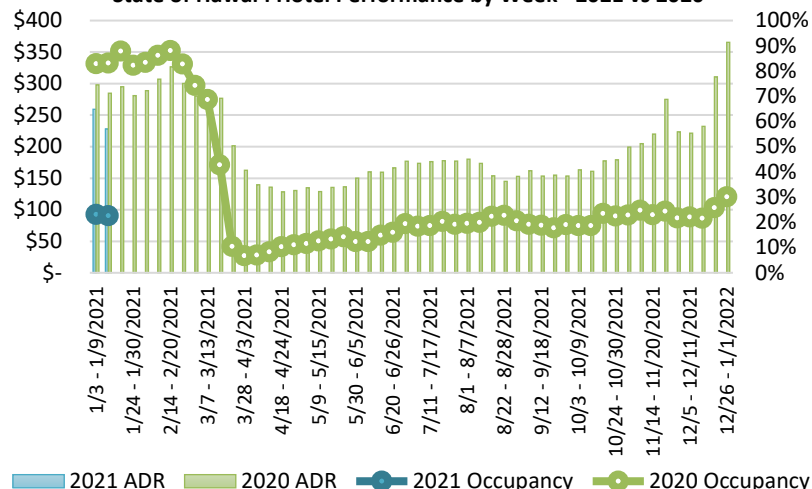
2021 Volume versus 2020 Volume
Through January 21, 2021

January 2021 (Month-to-Date through January 21)				
	2021	2020	Volume Change	Percent Change
Honolulu	92,781	277,675	-184,894	-66.6%
Maui County	43,778	121,129	-77,351	-63.9%
Island of Hawai'i	21,181	60,166	-38,985	-64.8%
Kaua'i	1,289	42,123	-40,834	-96.9%
Total	159,029	501,093	-342,064	-68.3%

2021 (Year-to-Date through January 21)				
	2021	2020	Volume Change	Percent Change
Honolulu	92,781	277,675	-184,894	-66.6%
Maui County	43,778	121,129	-77,351	-63.9%
Island of Hawai'i	21,181	60,166	-38,985	-64.8%
Kaua'i	1,289	42,123	-40,834	-96.9%
Total	159,029	501,093	-342,064	-68.3%

Source: HVCB analysis based on data from DBEDT
Note: Passenger volume figures include both visitors and residents. Total includes other international passengers.

State of Hawai'i Hotel Performance by Week - 2021 vs 2020



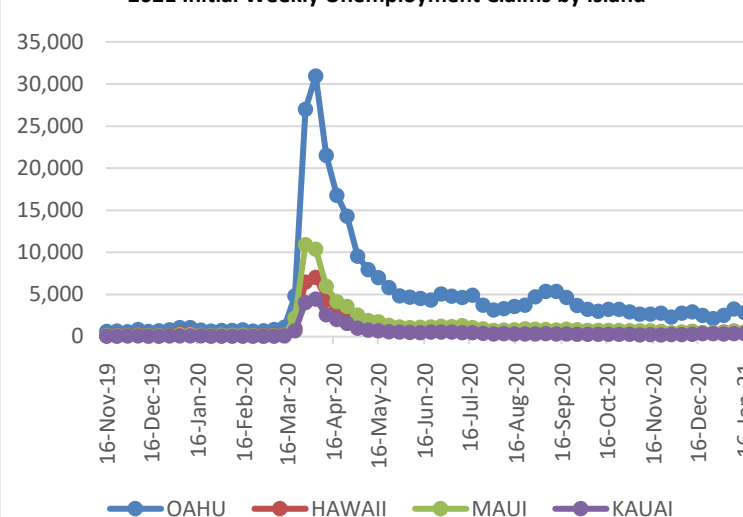
Source: STR, Inc. © Copyright 2021 Hawai'i Tourism Authority

Hawaii Hotel Performance Info:

For the week of January 10 – January 16, 2021

	Occupancy	ADR	RevPAR
State of Hawaii	22.6%	\$ 228.05	\$ 51.61
Oahu	22.1%	\$ 166.84	\$ 36.80
Maui County	20.2%	\$ 388.42	\$ 78.32
Kauai County	21.7%	\$ 164.10	\$ 35.58
Island of Hawaii	30.4%	\$ 234.22	\$ 71.16

2021 Initial Weekly Unemployment Claims by Island



Weekly Unemployment Initial Claims: January 16, 2021

State of Hawaii	4,527
C&C of Oahu	2,884
Hawaii County	533
Maui County	572
Kauai County	356
Agent (filed in Hawaii against another state)	182

News Highlights

January 22, 2021

Hawaii News Now: [6 in 10 older Americans don't know how to get vaccine](#)

Hawaii News Now: [Analysis: Hawaii is the worst state to drive](#)

KHON2: [State health officials say the next vaccine slated for approval will be a game-changer](#)

Pacific Business News: [Hawaiian Airlines launches pre-clearance program in some Mainland cities](#)

West Hawaii Today: [Scores of kupuna receive COVID-19 vaccine in Kona](#)

New York Post: [Final US county hit with COVID-19 is Hawaiian island, ex-leper colony](#)

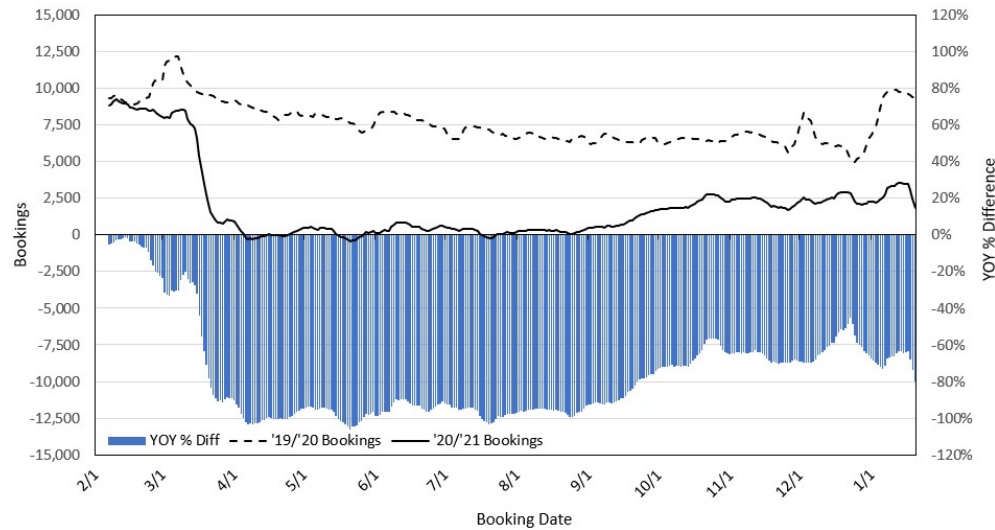
Travel Weekly: [Biden order requires masks for travel; quarantines for arriving travelers](#)

USA Today: [Where will you travel when the pandemic ends? Readers share their post-pandemic trip plans](#)

Successful Meetings: [How to Prevent the Spread of Coronavirus at In-Person Events, According to the CDC](#)

The Guardian: [Vaccine passports 'essential' for resumption of international travel](#)

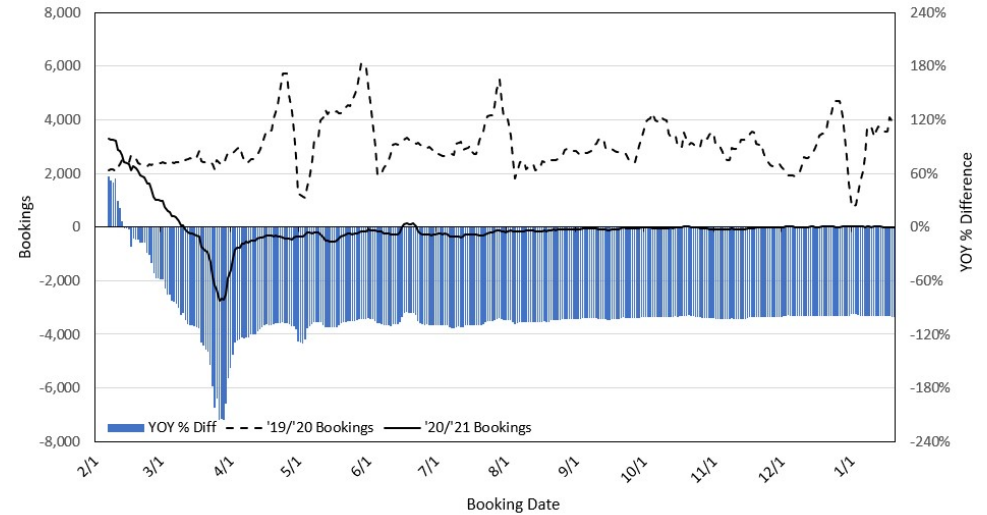
Travel Agency Bookings to Hawaii for Future Arrivals* Based on a 7-day Moving Average, as of January 20, 2021 U.S.



*Future Arrivals refers to all arrivals that are 'future' relative to the referenced booking date.
Source: Global Agency Pro

Update: Jan 20, 2021

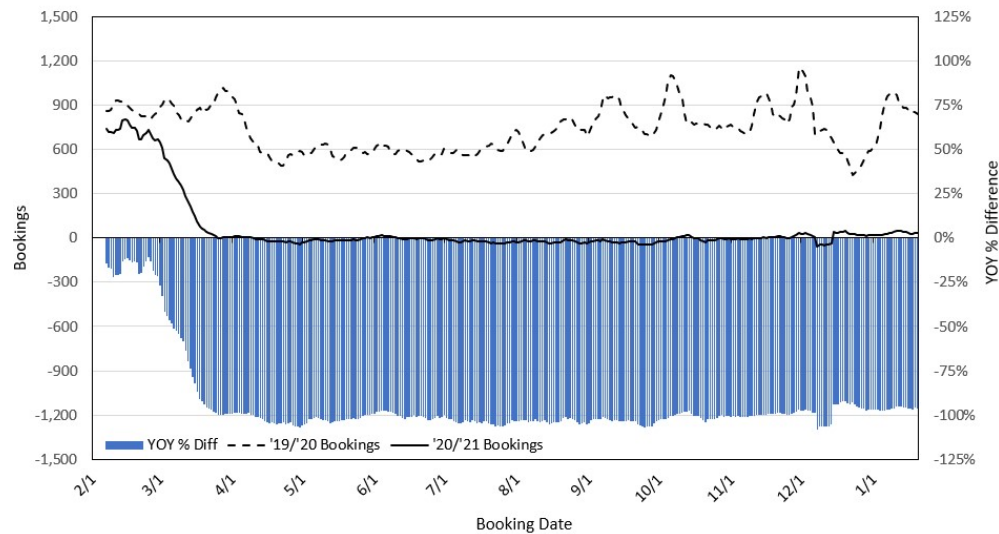
Travel Agency Bookings to Hawaii for Future Arrivals* Based on a 7-day Moving Average, as of January 20, 2021 Japan



*Future Arrivals refers to all arrivals that are 'future' relative to the referenced booking date.
Source: Global Agency Pro

Update: Jan 20, 2021

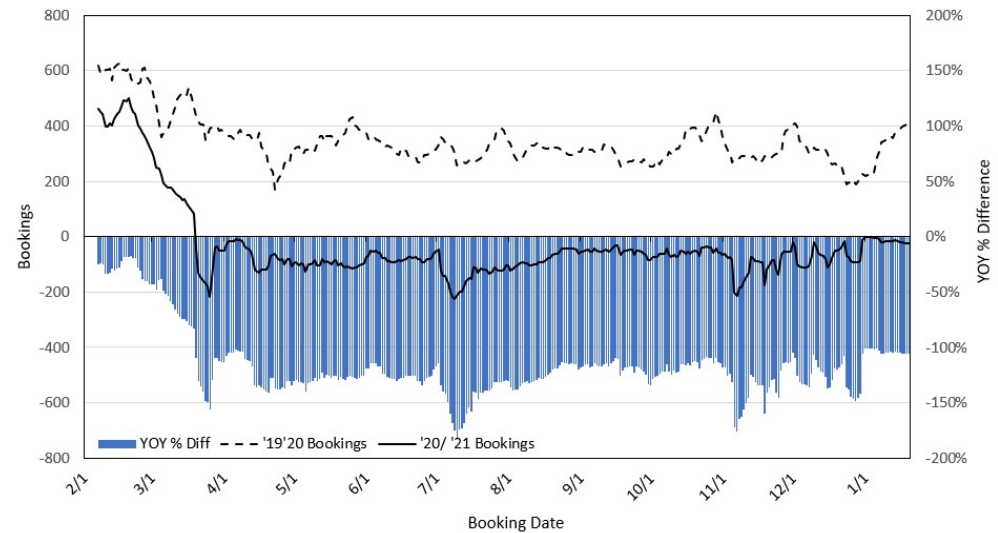
Travel Agency Bookings to Hawaii for Future Arrivals* Based on a 7-day Moving Average, as of January 20, 2021 Canada



*Future Arrivals refers to all arrivals that are 'future' relative to the referenced booking date.
Source: Global Agency Pro

Update: Jan 20, 2021

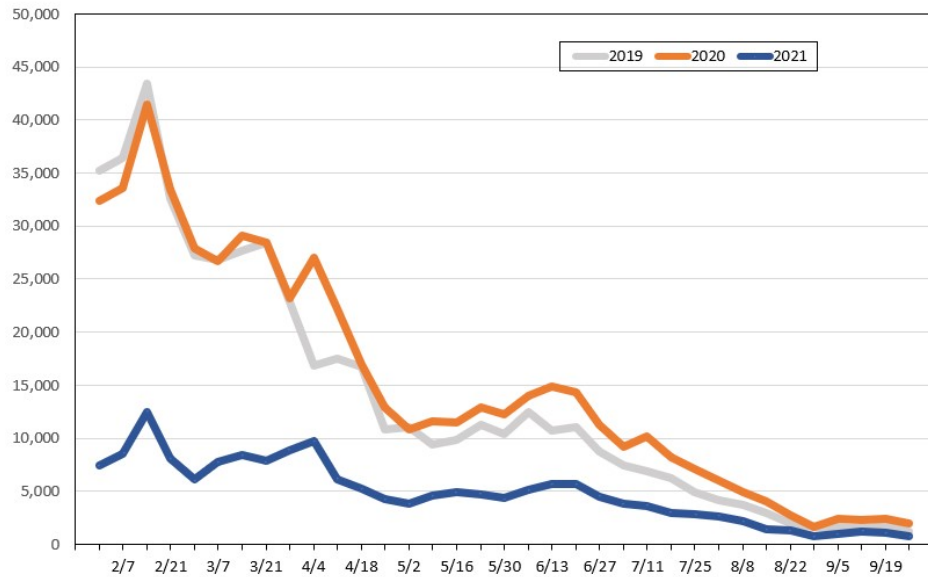
Travel Agency Bookings to Hawaii for Future Arrivals* Based on a 7-day Moving Average, as of January 20, 2021 Australia



*Future Arrivals refers to all arrivals that are 'future' relative to the referenced booking date.
Source: Global Agency Pro

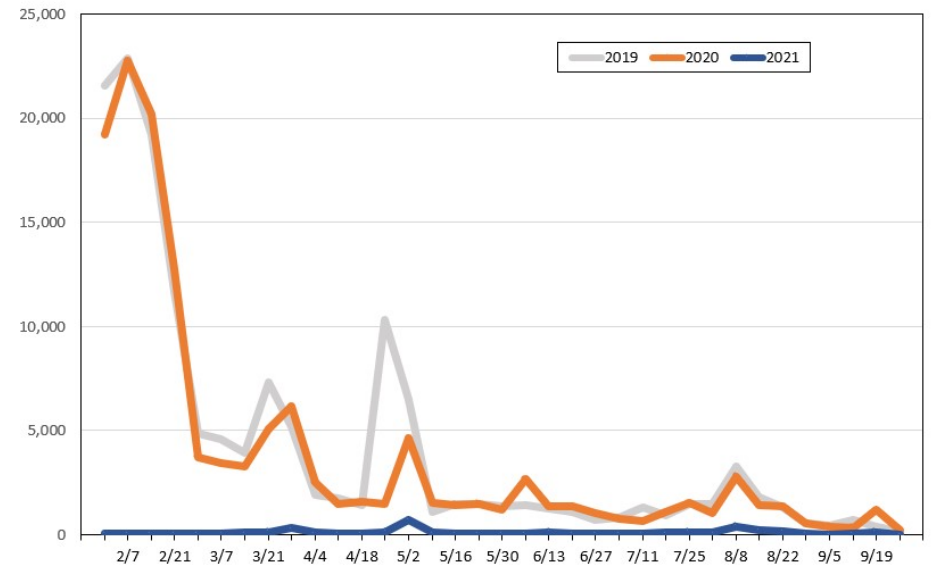
Update: Jan 20, 2021

Travel Agency Weekly Bookings for Future Travel to Hawai'i as of January 20, 2021
U.S.



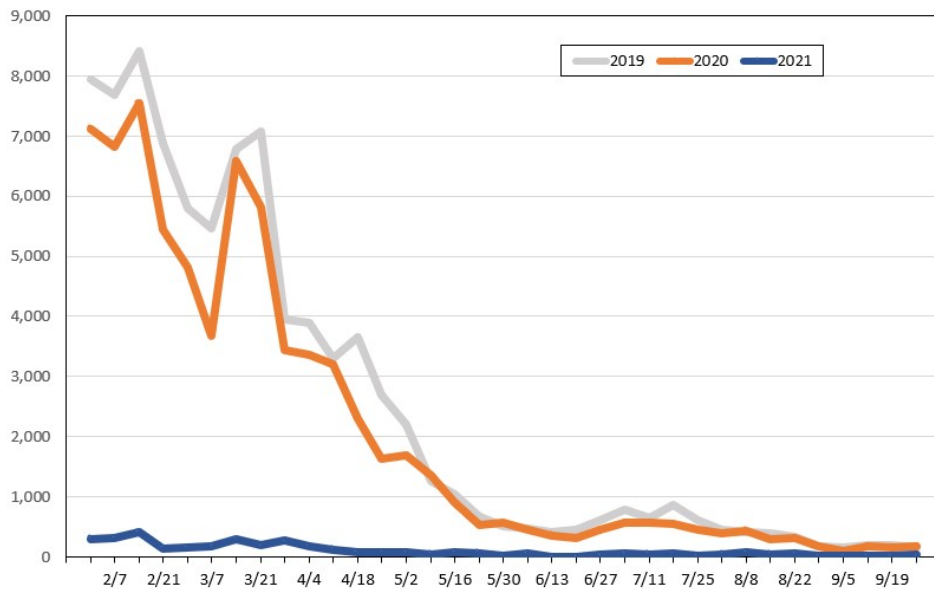
Source: Global Agency Pro, as of January 20, 2021

Travel Agency Weekly Bookings for Future Travel to Hawai'i as of January 20, 2021
Japan



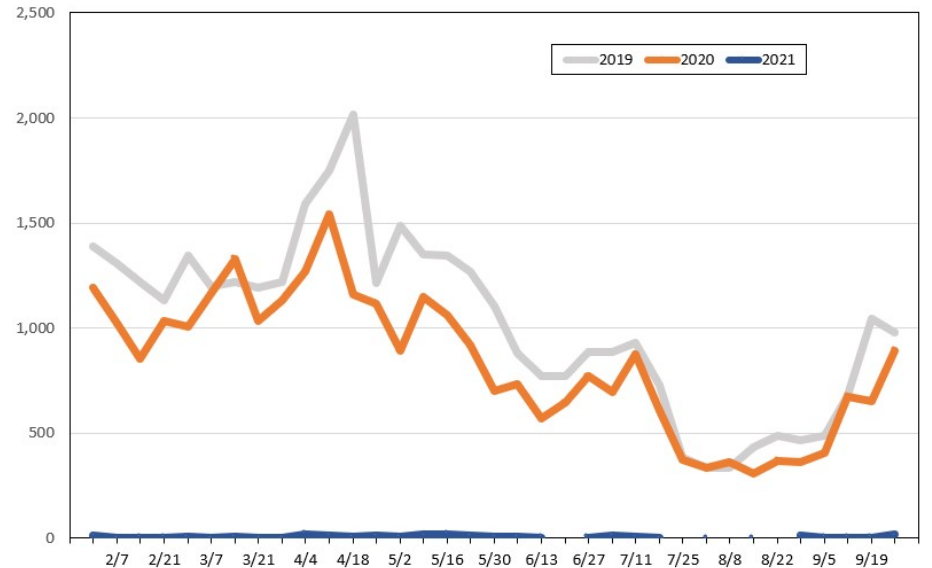
Source: Global Agency Pro, as of January 20, 2021

Travel Agency Weekly Bookings for Future Travel to Hawai'i as of January 20, 2021
Canada



Source: Global Agency Pro, as of January 20, 2021

Travel Agency Weekly Bookings for Future Travel to Hawai'i as of January 20, 2021
Australia



Source: Global Agency Pro, as of January 20, 2021