

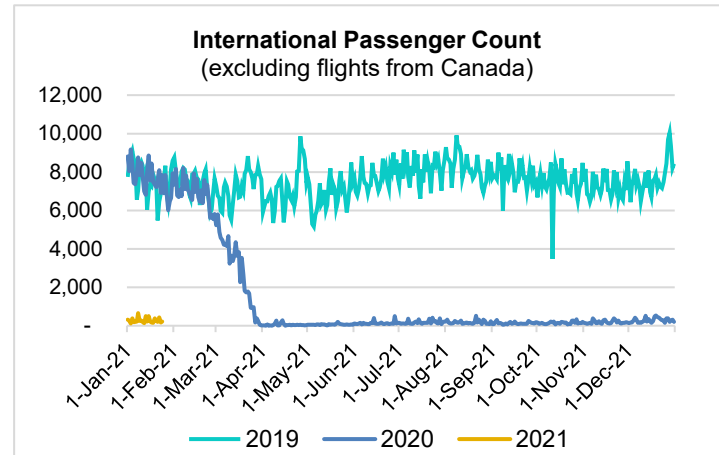
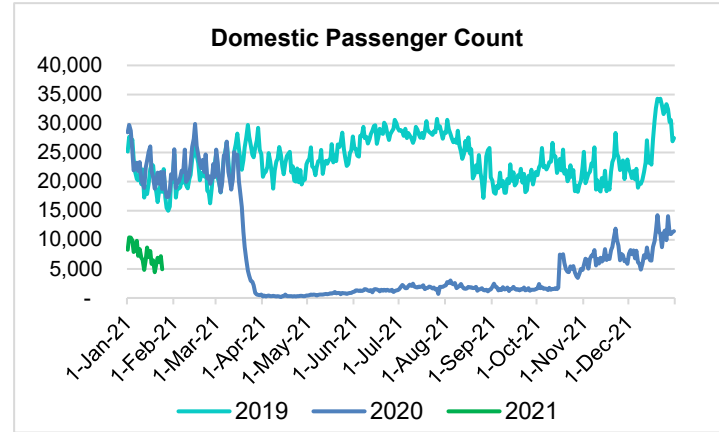
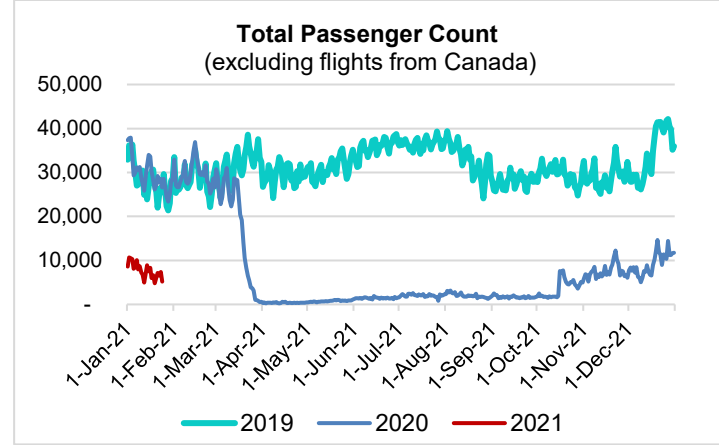
# HTA COVID-19 UPDATE

(Issued: 1/25/21 @ 4:30pm)

Reason for Trip by Arrival Airport - Transpacific Screened Passengers as of 01/24/21	Honolulu (HNL)	Kahului (OGG)	Kona (KOA)	Lihue (LIH)	Grand Total
Airline Crew	403	180	96	8	687
Connecting Flight (Transit)	251	10	0	1	262
Corporate Meeting	12	7	5	0	24
Essential Worker	145	20	11	6	182
Honeymoon	6	4	2	0	12
Incentive Trip	1	0	0	0	1
Intended Resident	65	13	22	1	101
Military or Federal Government	81	0	0	3	84
Other	42	8	4	1	55
Other Business	92	25	27	1	145
Pleasure/Vacation	903	1,348	596	14	2,861
Returning Resident	744	105	84	14	947
Sports Event	3	0	0	0	3
To Attend School	16	0	4	0	20
To Get Married	2	2	0	0	4
Visiting Friends or Relatives	350	68	108	12	538
<b>Grand Total</b>	<b>3,116</b>	<b>1,790</b>	<b>959</b>	<b>61</b>	<b>5,926</b>

Source: Safe Travels program developed by the State of Hawaii Office of Enterprise Technology Services

Note: The data is preliminary and subject to change



Daily Passenger Count Table

01/24/2021	Domestic	International	Total
Oahu	2566	214	2780
Maui	1520		1520
Island of Hawaii	820		820
Kauai	49		49
State	4955	214	5169

## Novel Coronavirus in Hawaii

### COVID-19 Positive Cases

Cumulative totals as of 12:00pm on January 25, 2021

Total Confirmed Cases	25,275* (123 new)
Hawaii	2,128
Kauai	178
Lanai	106
Maui	1626†
Molokai	25
Oahu	20,524
Out of State	688
Pending	0
Required Hospitalization	1664‡
Hawaii Deaths	342
Cases in the past 14 days	1,656*

### Footnotes for COVID-19 Cases

\* As a result of updated information, two cases on Oahu were removed from the counts, and one case on Oahu was re-categorized to Kauai.

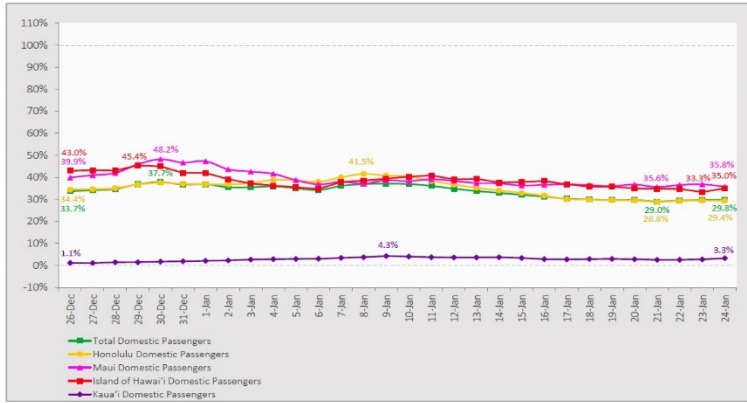
\*\*Using cases reported in the past 14 days provides a rough approximation of the number of cases currently meeting criteria for isolation. This proxy number for "active cases" resolves classification issues for cases unable to be reached or who are out of jurisdiction, for whom precise release from isolation date may not be possible to determine. It is also not influenced by lags in data entry. (This total does not include Hawaii residents diagnosed outside of Hawaii)

†One case is a Lanai resident whose exposure is on Maui Island and who will be remaining on Maui Island for the interim.

‡Includes Hawaii residents hospitalized out of state.

§Includes cases that meet isolation release criteria (Isolation should be maintained until at least 24 hours after resolution of fever and myalgia without the use of antipyretics OR at least 10 days have passed since symptom onset, whichever is longer). (The cases that have died and one case that has left the jurisdiction have been removed from these counts). Positive cases include confirmed cases, and Hawaii residents and non-residents; data are preliminary and subject to change. Note that CDC provides case counts according to states of residence.

**7-Day Domestic by Island Moving Average Daily Passenger Volume**  
2021 Volume as Percentage of 2020 Volume  
Through January 24, 2021



Source: HVCB analysis based on data from DBEDT  
Note: Passenger volume figures include both visitors and residents.

**Domestic by Island Month-to-Date and Year-to-Date Daily Passenger Volume**  
2021 Volume versus 2020 Volume  
Through January 24, 2021

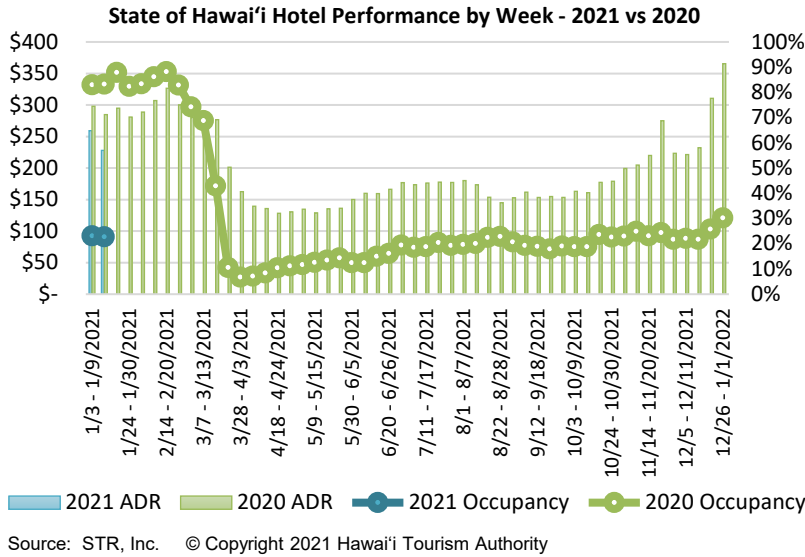
January 2021 (Month-to-Date through January 24)

	2021	2020	Volume Change	Percent Change
Honolulu	101,751	310,589	-208,838	-67.2%
Maui County	50,076	137,131	-87,055	-63.5%
Island of Hawai'i	24,057	67,472	-43,415	-64.3%
Kaua'i	1,434	47,080	-45,646	-97.0%
<b>Total</b>	<b>177,318</b>	<b>562,272</b>	<b>-384,954</b>	<b>-68.5%</b>

2021 (Year-to-Date through January 24)

	2021	2020	Volume Change	Percent Change
Honolulu	101,751	310,589	-208,838	-67.2%
Maui County	50,076	137,131	-87,055	-63.5%
Island of Hawai'i	24,057	67,472	-43,415	-64.3%
Kaua'i	1,434	47,080	-45,646	-97.0%
<b>Total</b>	<b>177,318</b>	<b>562,272</b>	<b>-384,954</b>	<b>-68.5%</b>

Source: HVCB analysis based on data from DBEDT  
Note: Passenger volume figures include both visitors and residents. Total includes other international passengers.

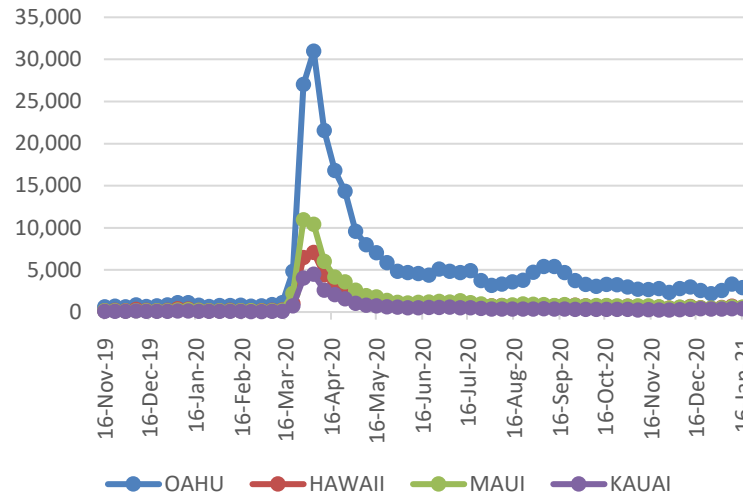


**Hawaii Hotel Performance Info:**

For the week of January 10 – January 16, 2021

	Occupancy	ADR	RevPAR
<b>State of Hawaii</b>	22.6%	\$ 228.05	\$ 51.61
<b>Oahu</b>	22.1%	\$ 166.84	\$ 36.80
<b>Maui County</b>	20.2%	\$ 388.42	\$ 78.32
<b>Kauai County</b>	21.7%	\$ 164.10	\$ 35.58
<b>Island of Hawaii</b>	30.4%	\$ 234.22	\$ 71.16

**2021 Initial Weekly Unemployment Claims by Island**



**Weekly Unemployment Initial Claims: January 16, 2021**

<b>State of Hawaii</b>	4,527
<b>C&amp;C of Oahu</b>	2,884
<b>Hawaii County</b>	533
<b>Maui County</b>	572
<b>Kauai County</b>	356
<b>Agent</b> (filed in Hawaii against another state)	182

**News Highlights**

January 25, 2021

**Honolulu Star Advertiser:**  
[Editorial: Marketing to few Hawaii tourists](#)

**Honolulu Star Advertiser: John De Fries:** [The Hawaii Tourism Authority CEO wants isles' visitor industry to be sensitive to Hawaiian culture and kamaaina ways of living](#)

**Hawaii News Now:** [Oahu's 2nd mass COVID-19 vaccination clinic to open at Blaisdell](#)

**SF Gate:** ['An anti-tourist experience': Hawaii travel group tours island's ugly realities](#)

**Matador Network:** [Florida moves to ban 'vaccine tourism' as people vie for shots](#)

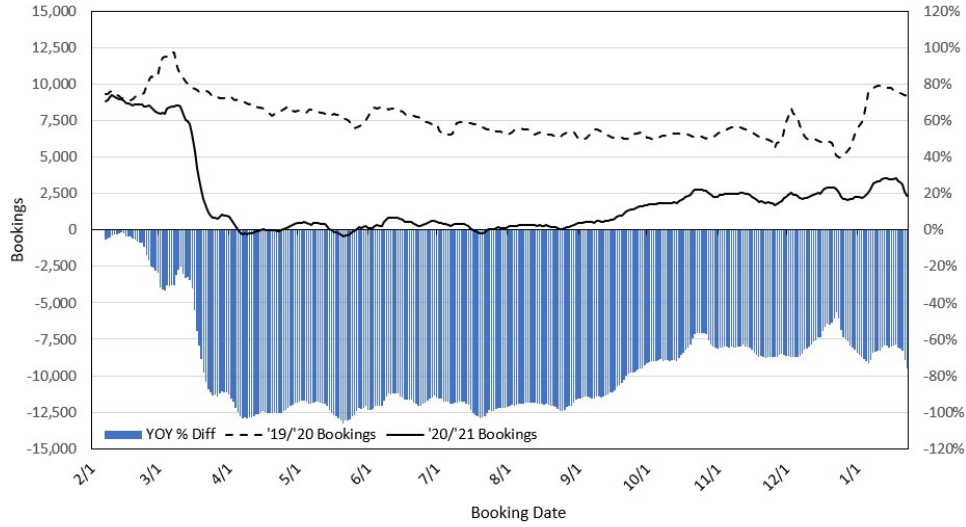
**Skift:** [The Travel Industry's Mind-Boggling Confusion Over Testing and Vaccines](#)

**Big Island Now:** [Hospitals Inundated With Calls From Kupuna Hoping to Receive COVID Vaccine](#)

**ABC News:** [US reinstating travel ban to fight spread of COVID-19 variants](#)

**Travel Pulse:** [World Tourism Organization Calls For Vaccine Passport](#)

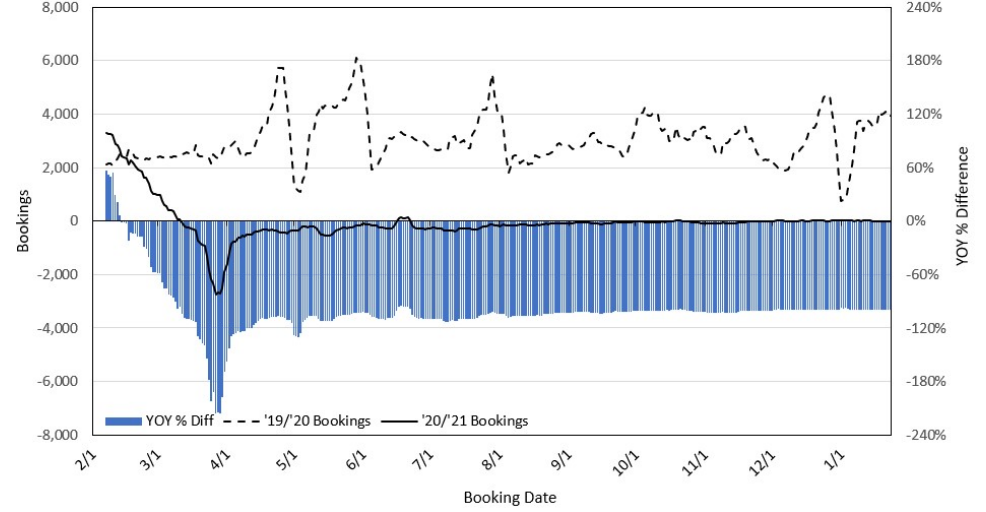
### Travel Agency Bookings to Hawaii for Future Arrivals\* Based on a 7-day Moving Average, as of January 23, 2021 U.S.



\*Future Arrivals refers to all arrivals that are 'future' relative to the referenced booking date.  
Source: Global Agency Pro

Update: Jan 23, 2021

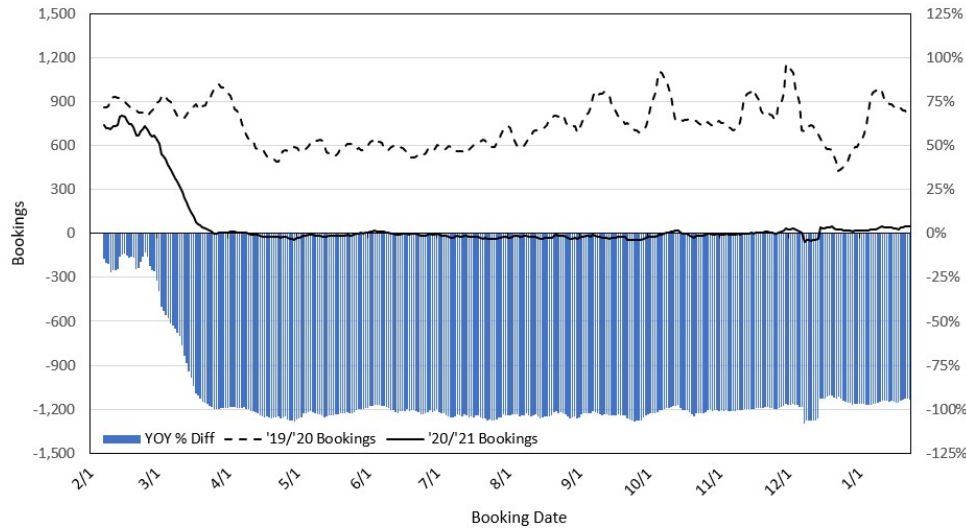
### Travel Agency Bookings to Hawaii for Future Arrivals\* Based on a 7-day Moving Average, as of January 23, 2021 Japan



\*Future Arrivals refers to all arrivals that are 'future' relative to the referenced booking date.  
Source: Global Agency Pro

Update: Jan 23, 2021

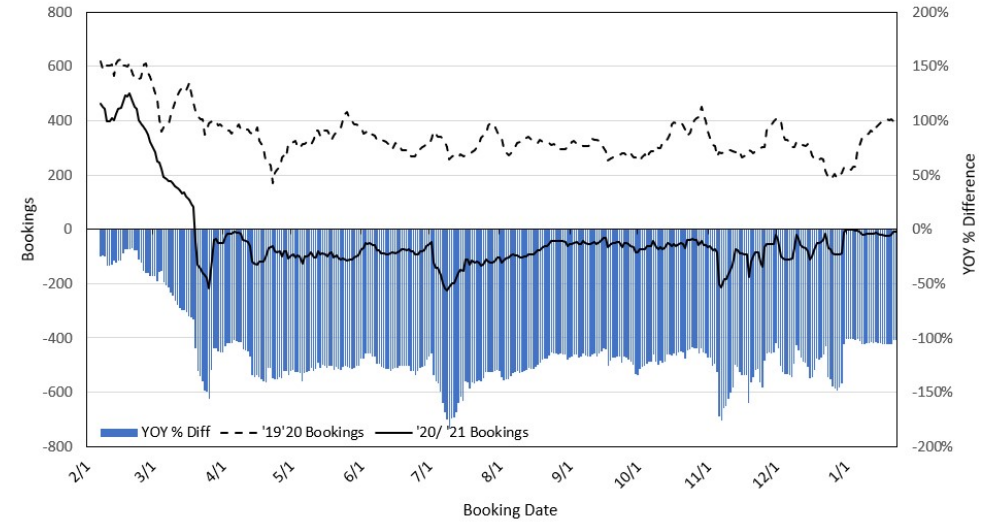
### Travel Agency Bookings to Hawaii for Future Arrivals\* Based on a 7-day Moving Average, as of January 23, 2021 Canada



\*Future Arrivals refers to all arrivals that are 'future' relative to the referenced booking date.  
Source: Global Agency Pro

Update: Jan 23, 2021

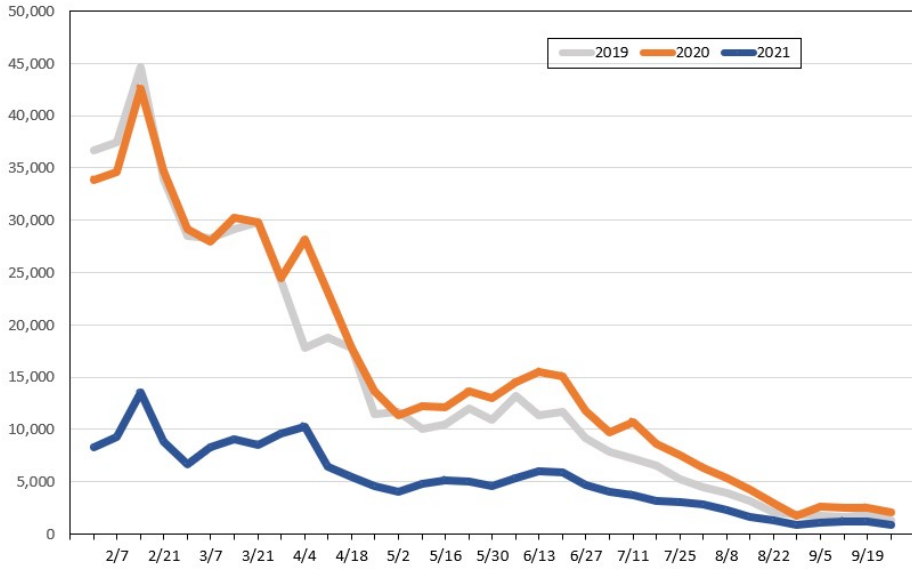
### Travel Agency Bookings to Hawaii for Future Arrivals\* Based on a 7-day Moving Average, as of January 23, 2021 Australia



\*Future Arrivals refers to all arrivals that are 'future' relative to the referenced booking date.  
Source: Global Agency Pro

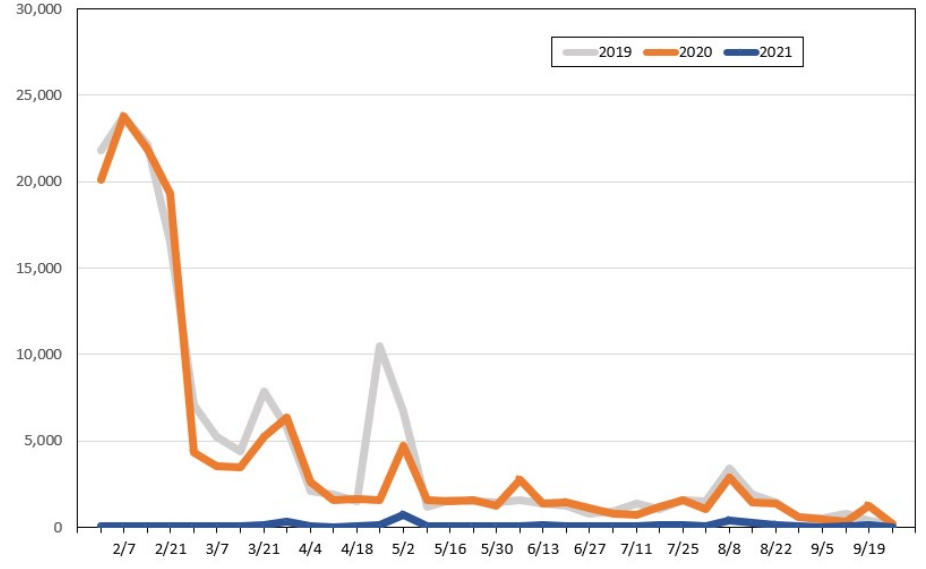
Update: Jan 23, 2021

**Travel Agency Weekly Bookings for Future Travel to Hawai'i as of January 23, 2021**  
U.S.



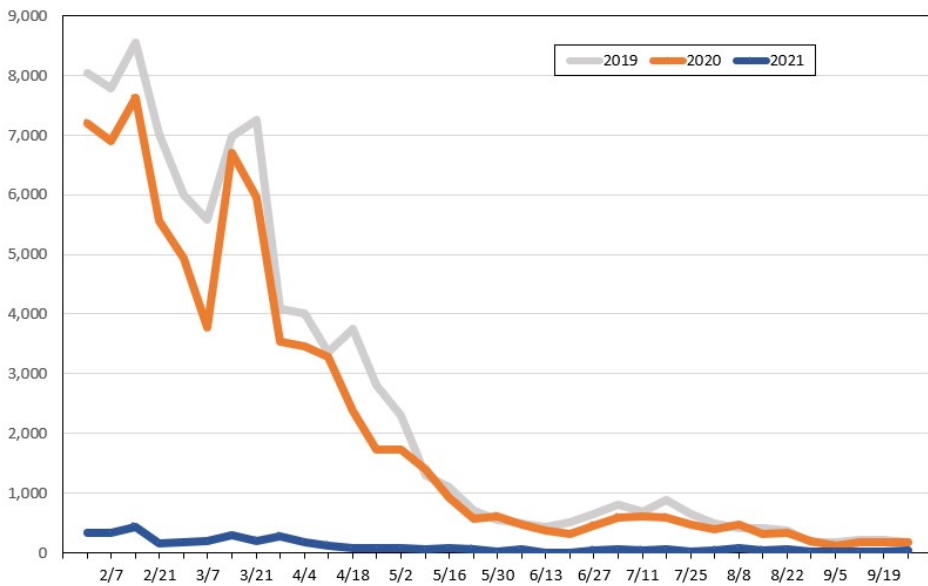
Source: Global Agency Pro, as of January 23, 2021

**Travel Agency Weekly Bookings for Future Travel to Hawai'i as of January 23, 2021**  
Japan



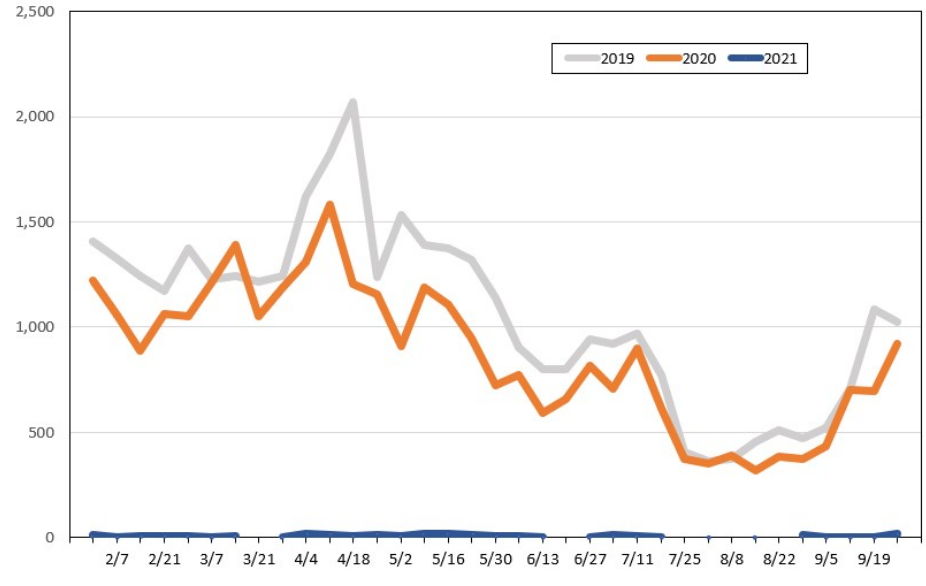
Source: Global Agency Pro, as of January 23, 2021

**Travel Agency Weekly Bookings for Future Travel to Hawai'i as of January 23, 2021**  
Canada



Source: Global Agency Pro, as of January 23, 2021

**Travel Agency Weekly Bookings for Future Travel to Hawai'i as of January 23, 2021**  
Australia



Source: Global Agency Pro, as of January 23, 2021