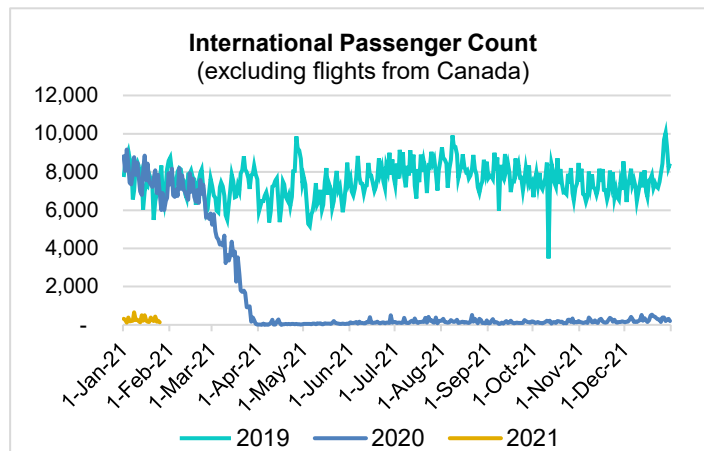
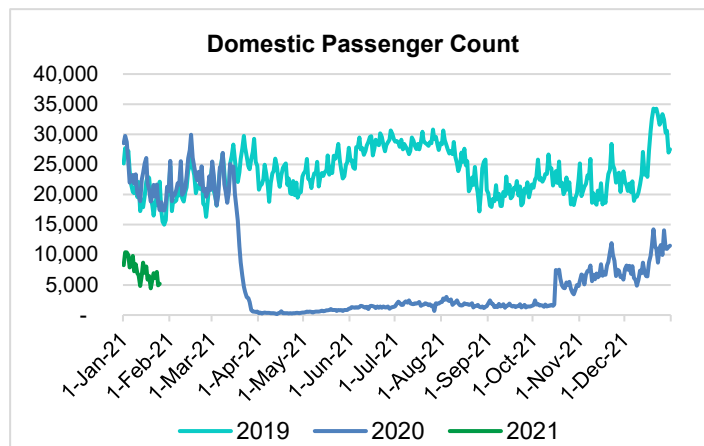
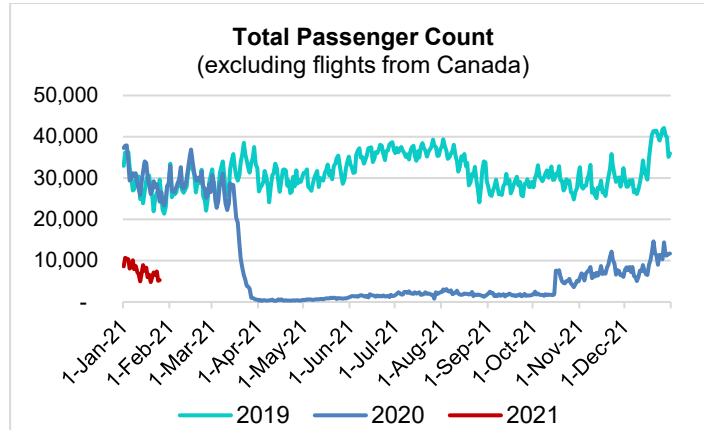


HTA COVID-19 UPDATE

(Issued: 1/26/21 @ 4:30pm)

Reason for Trip by Arrival Airport - Transpacific Screened Passengers as of 01/25/21	Honolulu (HNL)	Kahului (OGG)	Kona (KOA)	Lihue (LIH)	Grand Total
Airline Crew	363	173	102	5	643
Connecting Flight (Transit)	219	11	0	1	231
Corporate Meeting	4	11	1	0	16
Essential Worker	136	29	17	6	188
Honeymoon	17	13	4	0	34
Intended Resident	100	18	10	3	131
Military or Federal Government	77	1	0	1	79
Other	36	7	9	1	53
Other Business	74	41	20	4	139
Pleasure/Vacation	1,079	1,184	456	18	2,737
Returning Resident	815	165	109	15	1,104
Sports Event	17	0	0	0	17
To Attend School	31	1	0	0	32
To Get Married	3	0	2	0	5
Visiting Friends or Relatives	475	153	126	3	757
Grand Total	3,446	1,807	856	57	6,166

Source: Safe Travels program developed by the State of Hawaii Office of Enterprise Technology Services
Note: The data is preliminary and subject to change



Daily Passenger Count Table

01/25/2021	Domestic	International	Total
Oahu	2857	128	2985
Maui	1542		1542
Island of Hawaii	742		742
Kauai	31		31
State	5172	128	5300

Novel Coronavirus in Hawaii

COVID-19 Positive Cases

Cumulative totals as of 12:00pm on January 26, 2021

Total Confirmed Cases	25,339* (71 new)
Hawaii	2,129
Kauai	178
Lanai	106
Maui	1634†
Molokai	25
Oahu	20,578
Out of State	689
Pending	0
Required Hospitalization	1669‡
Hawaii Deaths	401
Cases in the past 14 days	1,612*

Footnotes for COVID-19 Cases

* As a result of updated information, seven cases on Oahu were removed from the counts.

**Using cases reported in the past 14 days provides a rough approximation of the number of cases currently meeting criteria for isolation. This proxy number for "active cases" resolves classification issues for cases unable to be reached or who are out of jurisdiction, for whom precise release from isolation date may not be possible to determine. It is also not influenced by lags in data entry. (This total does not include Hawaii residents diagnosed outside of Hawaii)

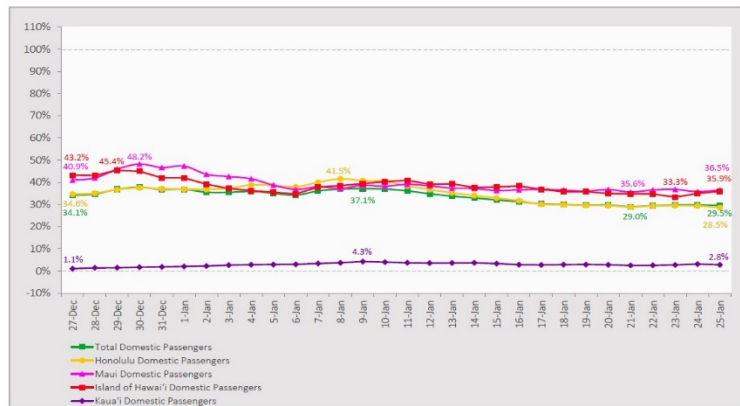
†One case is a Lanai resident whose exposure is on Maui Island and who will be remaining on Maui Island for the interim.

‡Includes Hawaii residents hospitalized out of state.

§Includes cases that meet isolation release criteria (Isolation should be maintained until at least 24 hours after resolution of fever and myalgia without the use of antipyretics OR at least 10 days have passed since symptom onset, whichever is longer). (The cases that have died and one case that has left the jurisdiction have been removed from these counts). Positive cases include confirmed cases, and Hawaii residents and non-residents; data are preliminary and subject to change. Note that CDC provides case counts according to states of residence.

7-Day Domestic by Island Moving Average Daily Passenger Volume

2021 Volume as Percentage of 2020 Volume
Through January 25, 2021



Source: HVCB analysis based on data from DBEDT
Note: Passenger volume figures include both visitors and residents.

Domestic by Island Month-to-Date and Year-to-Date Daily Passenger Volume

2021 Volume versus 2020 Volume
Through January 25, 2021

January 2021 (Month-to-Date through January 25)

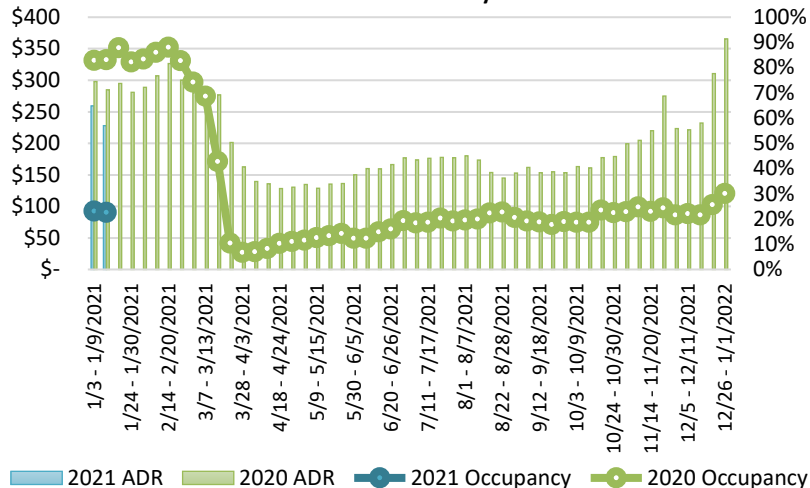
	2021	2020	Volume Change	Percent Change
Honolulu	104,608	321,720	-217,112	-67.5%
Maui County	51,618	143,151	-91,533	-63.9%
Island of Hawai'i	24,796	70,676	-45,880	-64.9%
Kaua'i	1,453	48,376	-46,923	-97.0%
Total	182,475	583,923	-401,448	-68.8%

2021 (Year-to-Date through January 25)

	2021	2020	Volume Change	Percent Change
Honolulu	104,608	321,720	-217,112	-67.5%
Maui County	51,618	143,151	-91,533	-63.9%
Island of Hawai'i	24,796	70,676	-45,880	-64.9%
Kaua'i	1,453	48,376	-46,923	-97.0%
Total	182,475	583,923	-401,448	-68.8%

Source: HVCB analysis based on data from DBEDT
Note: Passenger volume figures include both visitors and residents. Total includes other international passengers.

State of Hawai'i Hotel Performance by Week - 2021 vs 2020



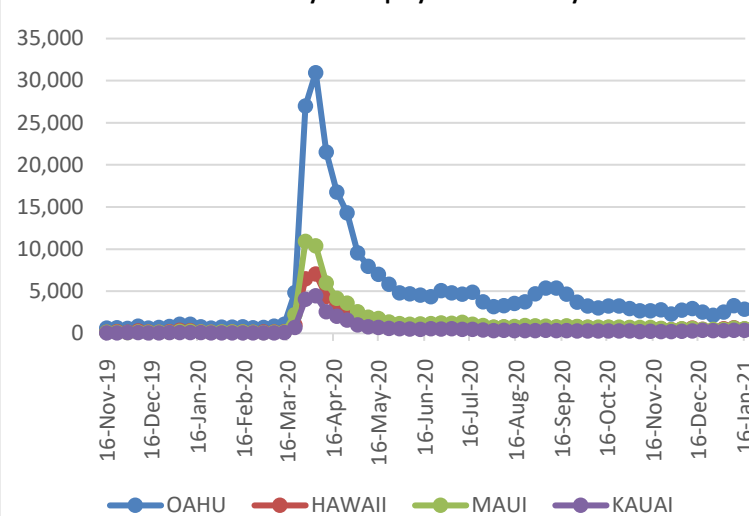
Source: STR, Inc. © Copyright 2021 Hawai'i Tourism Authority

Hawaii Hotel Performance Info:

For the week of January 10 – January 16, 2021

	Occupancy	ADR	RevPAR
State of Hawaii	22.6%	\$ 228.05	\$ 51.61
Oahu	22.1%	\$ 166.84	\$ 36.80
Maui County	20.2%	\$ 388.42	\$ 78.32
Kauai County	21.7%	\$ 164.10	\$ 35.58
Island of Hawaii	30.4%	\$ 234.22	\$ 71.16

2021 Initial Weekly Unemployment Claims by Island



Weekly Unemployment Initial Claims: January 16, 2021

State of Hawaii	4,527
C&C of Oahu	2,884
Hawaii County	533
Maui County	572
Kauai County	356
Agent (filed in Hawaii against another state)	182

News Highlights

January 26, 2021

Pacific Business News: [Hawaii vacation rentals reported declines in occupancy, supply and demand during December](#)

The Garden Island: [Ige's campaign pushes for digital economy](#)

West Hawaii Today: [State lab detects COVID-19 variant](#)

Hawaii Tribune-Herald: [ICUs put on edge: 2 in 5 Americans live where COVID-19 strains hospitals](#)

The Guardian: [Remote workers are flocking to Hawaii. But is that good for the islands?](#)

Travel Pulse: [Hawaii Travel Restrictions: Things Tourists Should Know for 2021](#)

The Mercury News: [U.S. Covid-19 travel restrictions state by state](#)

Travel + Leisure: [10 Mistakes to Avoid While Traveling Abroad During the COVID-19 Pandemic](#)

Miles To Memories: [Hawaii Quarantine Exemption: How To Visit Kauai Without Quarantine](#)

Travel Pulse: [5 Things You Need to Know Before Booking a COVID-19 Test Abroad](#)

Helpful Resources

Department of Health
<https://hawaiiicovid19.com/>

Department of Health

<https://health.hawaii.gov/docd/advisories/novel-coronavirus-2019>

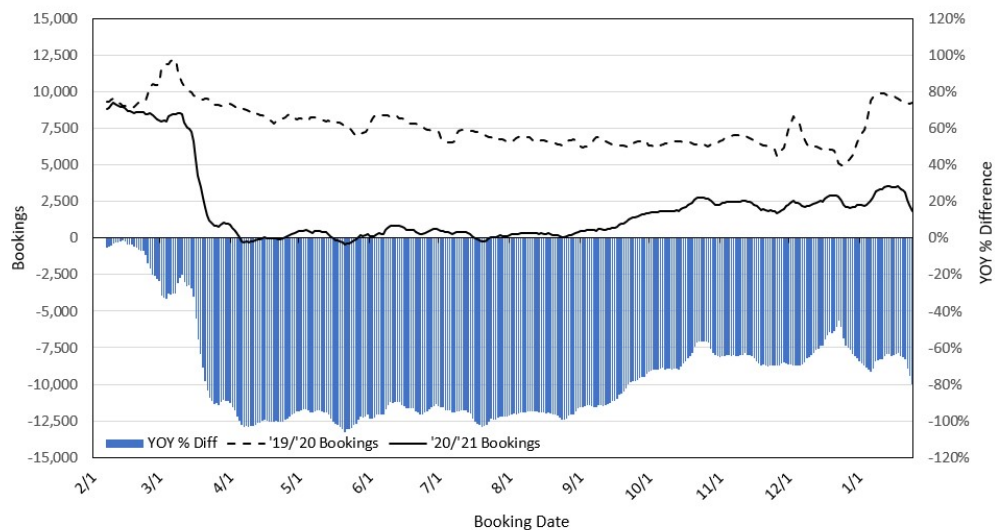
Dept. of Business, Economic Development & Tourism

<https://dbedt.hawaii.gov/economic/covid19/>

Department of Transportation

<https://hidot.hawaii.gov/coronavirus/>

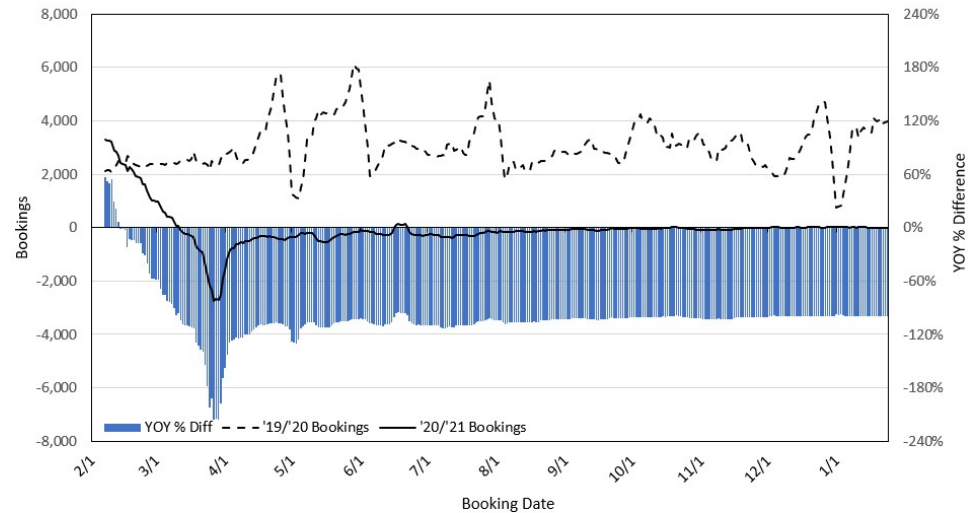
Travel Agency Bookings to Hawaii for Future Arrivals* Based on a 7-day Moving Average, as of January 24, 2021 U.S.



*Future Arrivals refers to all arrivals that are 'future' relative to the referenced booking date.
Source: Global Agency Pro

Update: Jan 24, 2021

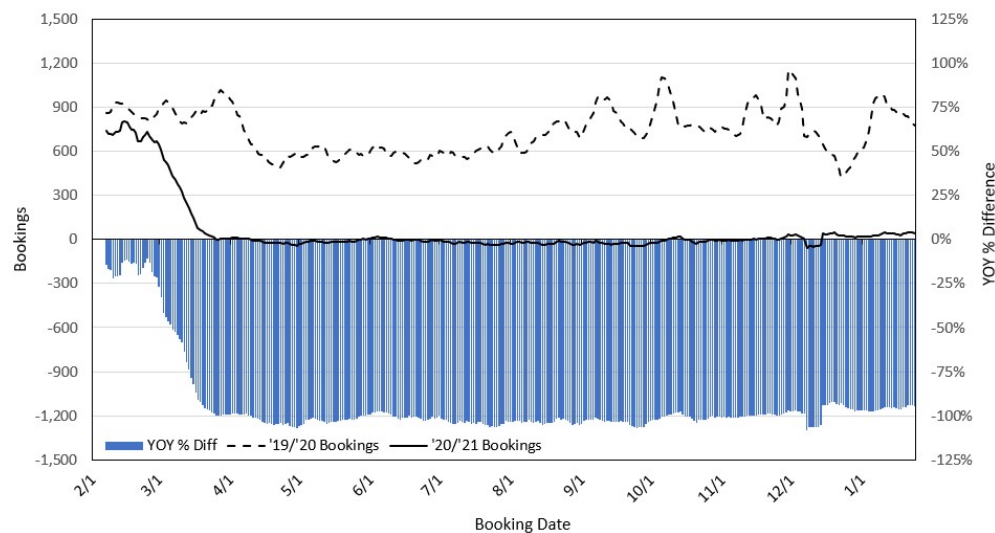
Travel Agency Bookings to Hawaii for Future Arrivals* Based on a 7-day Moving Average, as of January 24, 2021 Japan



*Future Arrivals refers to all arrivals that are 'future' relative to the referenced booking date.
Source: Global Agency Pro

Update: Jan 24, 2021

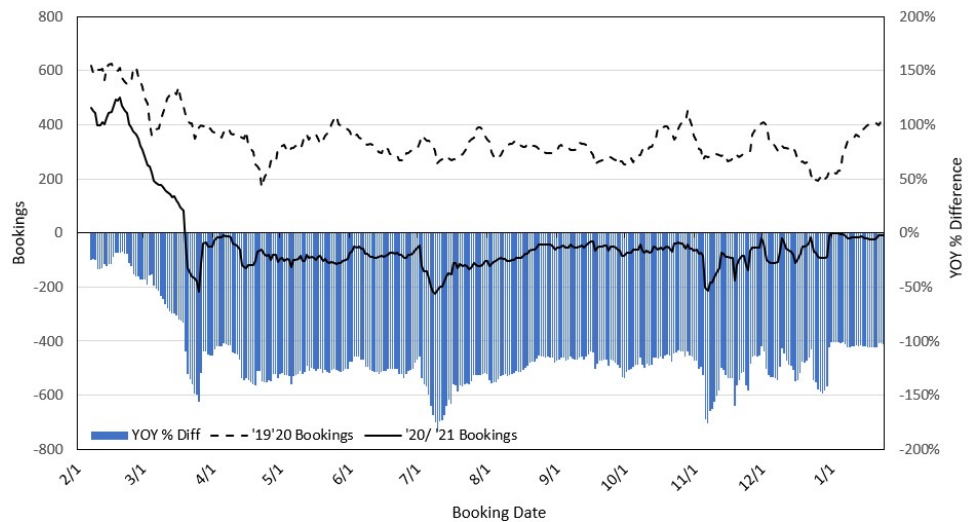
Travel Agency Bookings to Hawaii for Future Arrivals* Based on a 7-day Moving Average, as of January 24, 2021 Canada



*Future Arrivals refers to all arrivals that are 'future' relative to the referenced booking date.
Source: Global Agency Pro

Update: Jan 24, 2021

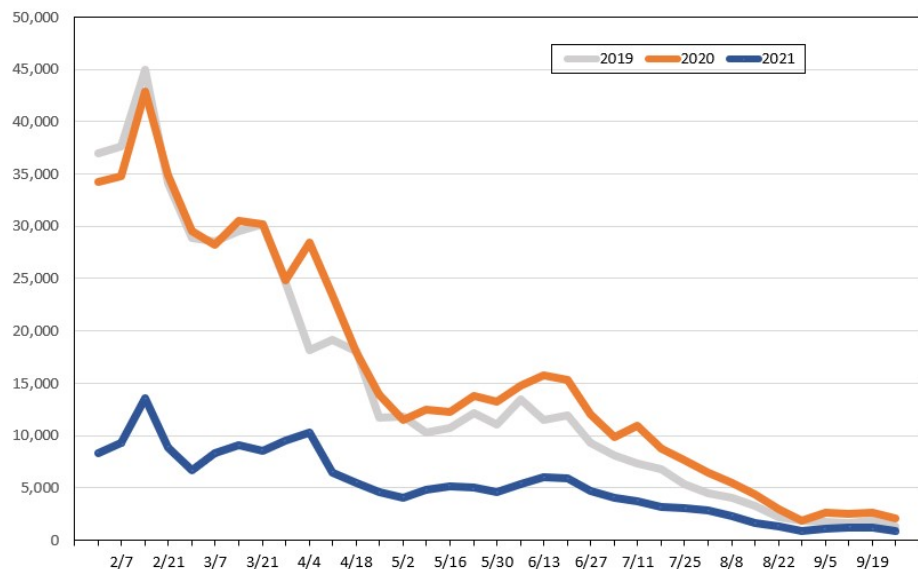
Travel Agency Bookings to Hawaii for Future Arrivals* Based on a 7-day Moving Average, as of January 24, 2021 Australia



*Future Arrivals refers to all arrivals that are 'future' relative to the referenced booking date.
Source: Global Agency Pro

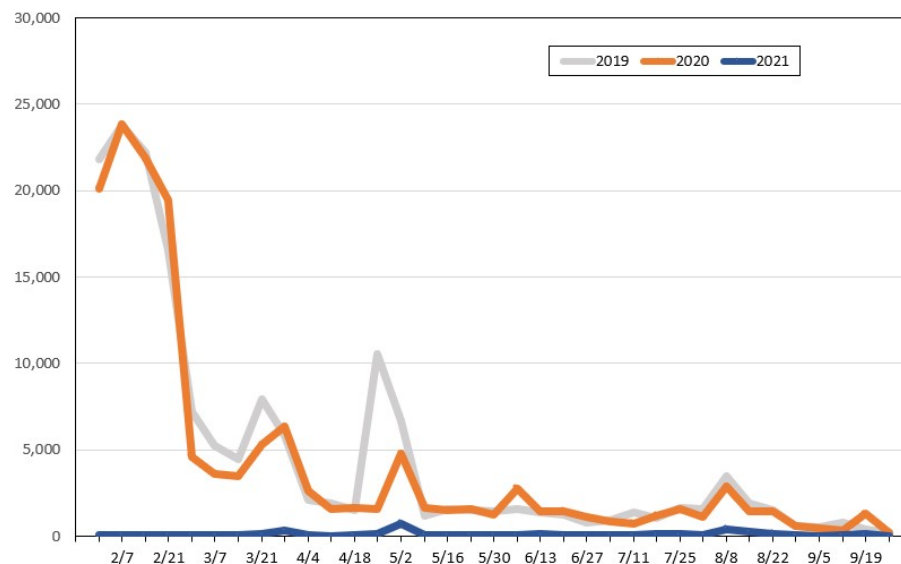
Update: Jan 24, 2021

Travel Agency Weekly Bookings for Future Travel to Hawai'i as of January 24, 2021
U.S.



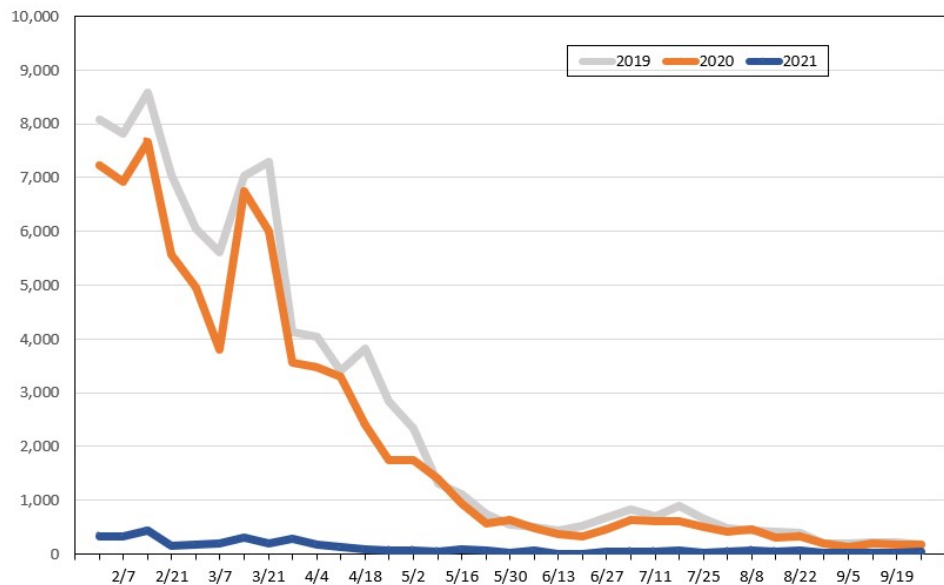
Source: Global Agency Pro, as of January 24, 2021

Travel Agency Weekly Bookings for Future Travel to Hawai'i as of January 24, 2021
Japan



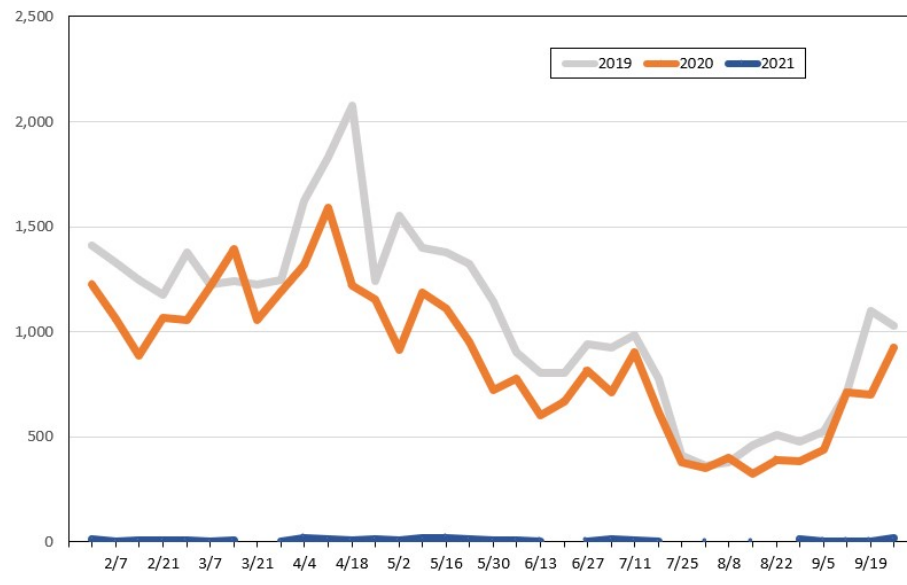
Source: Global Agency Pro, as of January 24, 2021

Travel Agency Weekly Bookings for Future Travel to Hawai'i as of January 24, 2021
Canada



Source: Global Agency Pro, as of January 24, 2021

Travel Agency Weekly Bookings for Future Travel to Hawai'i as of January 24, 2021
Australia



Source: Global Agency Pro, as of January 24, 2021