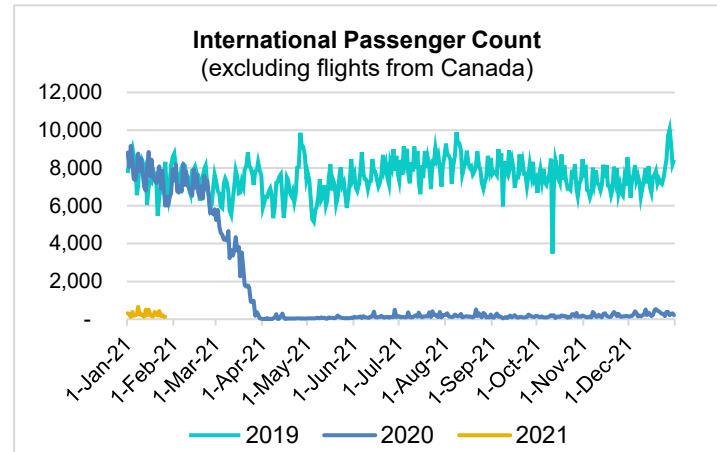
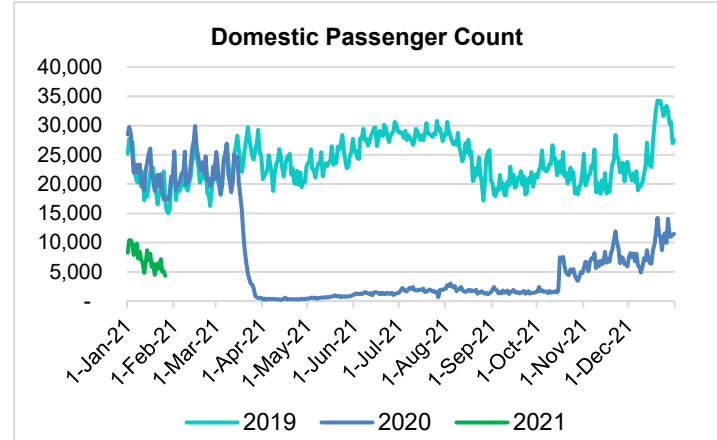
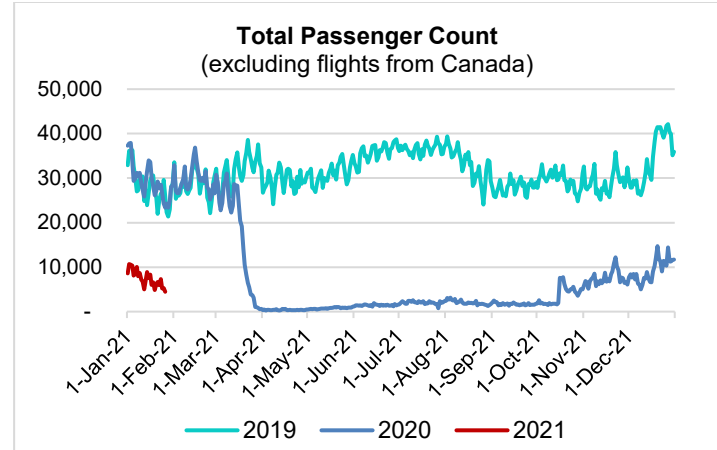


HTA COVID-19 UPDATE

(Issued: 1/27/21 @ 5:00pm)

Reason for Trip by Arrival Airport - Transpacific Screened Passengers as of 01/26/21	Honolulu (HNL)	Kahului (OGG)	Kona (KOA)	Lihue (LIH)	Grand Total
Airline Crew	336	160	79	8	583
Connecting Flight (Transit)	185	7	1	0	193
Corporate Meeting	3	1	0	0	4
Essential Worker	101	16	9	4	130
Honeymoon	5	5	2	0	12
Incentive Trip	2	0	0	0	2
Intended Resident	72	10	15	4	101
Military or Federal Government	75	0	0	0	75
Other	43	13	2	0	58
Other Business	63	11	11	2	87
Pleasure/Vacation	845	987	348	14	2,194
Returning Resident	610	113	94	8	825
Sports Event	60	0	0	0	60
To Attend School	28	1	1	0	30
To Get Married	2	4	0	0	6
Transit	1	0	0	0	1
Visiting Friends or Relatives	380	102	115	18	615
Grand Total	2,811	1,430	677	58	4,976

Source: Safe Travels program developed by the State of Hawaii Office of Enterprise Technology Services
Note: The data is preliminary and subject to change



Daily Passenger Count Table

01/26/2021	Domestic	International	Total
Oahu	2510	129	2639
Maui	1200		1200
Island of Hawaii	581		581
Kauai	44		44
State	4335	129	4464

Novel Coronavirus in Hawaii

COVID-19 Positive Cases

Cumulative totals as of 12:00pm on January 27, 2021

Total Confirmed Cases	25,442* (103 new)
Hawaii	2,132
Kauai	178
Lanai	106
Maui	1661†
Molokai	25
Oahu	20,642
Out of State	698
Pending	0
Required Hospitalization	1673‡
Hawaii Deaths	404
Cases in the past 14 days	1,613*

Footnotes for COVID-19 Cases

* 59 historic deaths were reported on 1/26/21 as a result of a comprehensive review of Electronic Death Reporting System records. These deaths occurred between August 2020 and December 2020 and are reported from 3 islands (Oahu: 49, Hawaii: 7, Maui: 3).

**Using cases reported in the past 14 days provides a rough approximation of the number of cases currently meeting criteria for isolation. This proxy number for "active cases" resolves classification issues for cases unable to be reached or who are out of jurisdiction, for whom precise release from isolation date may not be possible to determine. It is also not influenced by lags in data entry. (This total does not include Hawaii residents diagnosed outside of Hawaii)

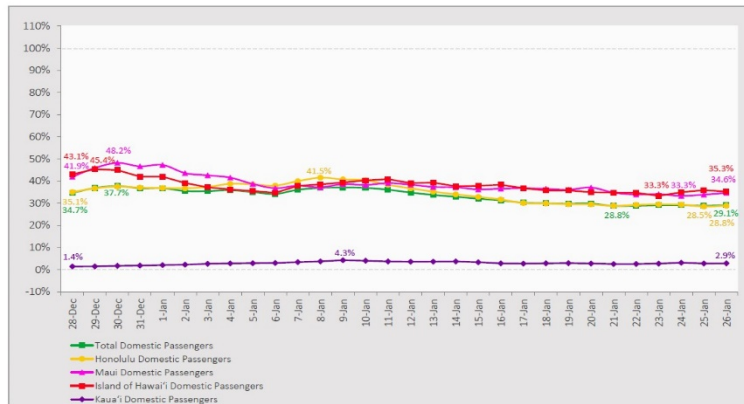
†One case is a Lanai resident whose exposure is on Maui Island and who will be remaining on Maui Island for the interim.

‡Includes Hawaii residents hospitalized out of state.

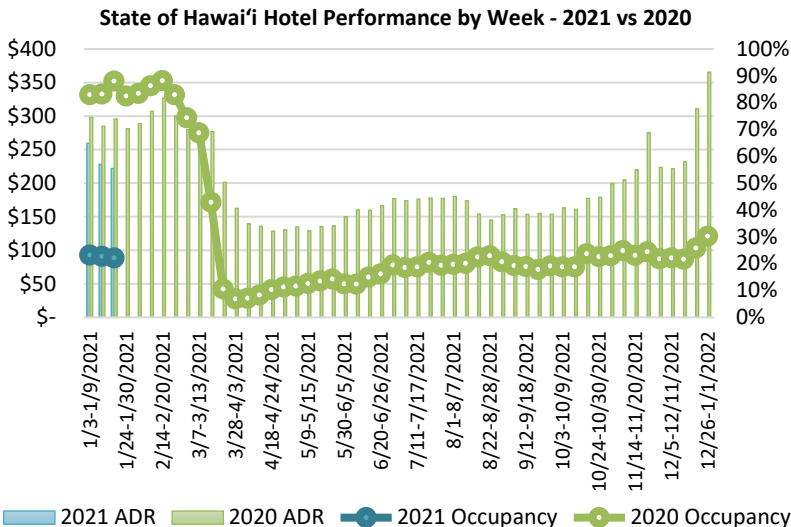
7-Day Domestic by Island Moving Average Daily Passenger Volume

2021 Volume as Percentage of 2020 Volume

Through January 26, 2021



Source: HVCB analysis based on data from DBEDT
Note: Passenger volume figures include both visitors and residents.



Source: STR, Inc. © Copyright 2021 Hawaii's Tourism Authority

Hawaii Hotel Performance Info:

For the week of January 17 – January 23, 2021

	Occupancy	ADR	RevPAR
State of Hawaii	22.1%	\$221.90	\$48.99
Oahu	21.7%	\$158.77	\$34.45
Maui County	20.1%	\$383.23	\$77.04
Kauai County	19.7%	\$165.50	\$32.54
Island of Hawaii	28.8%	\$222.52	\$64.16

Domestic by Island Month-to-Date and Year-to-Date Daily Passenger Volume

2021 Volume versus 2020 Volume

Through January 26, 2021

January 2021 (Month-to-Date through January 26)

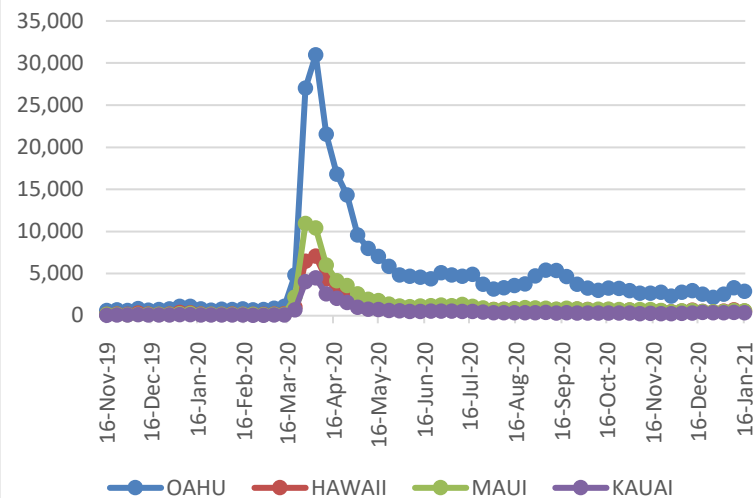
	2021	2020	Volume Change	Percent Change
Honolulu	107,118	332,115	-224,997	-67.7%
Maui County	51,897	148,217	-96,320	-65.0%
Island of Hawai'i	25,377	72,752	-47,375	-65.1%
Kauai	1,497	49,587	-48,090	-97.0%
Total	185,889	602,671	-416,782	-69.2%

2021 (Year-to-Date through January 26)

	2021	2020	Volume Change	Percent Change
Honolulu	107,118	332,115	-224,997	-67.7%
Maui County	51,897	148,217	-96,320	-65.0%
Island of Hawai'i	25,377	72,752	-47,375	-65.1%
Kauai	1,497	49,587	-48,090	-97.0%
Total	185,889	602,671	-416,782	-69.2%

Source: HVCB analysis based on data from DBEDT
Note: Passenger volume figures include both visitors and residents. Total includes other international passengers.

2021 Initial Weekly Unemployment Claims by Island



Weekly Unemployment Initial Claims: January 16, 2021

State of Hawaii	4,527
C&C of Oahu	2,884
Hawaii County	533
Maui County	572
Kauai County	356
Agent (filed in Hawaii against another state)	182

News Highlights

January 27, 2021

Hawaii News Now: [California university rolls out COVID test vending machines](#)

KITV4: [New restriction on international travelers could slow down recovery of Hawaii tourism](#)

West Hawaii Today: [Post-arrival testing to continue through February](#)

The Garden Island: [Supporting local-owned businesses for your health](#)

The Garden Island: [Kupuna can join vaccine waitlist](#)

Travel Pulse: [US Officials Consider Mandatory COVID-19 Testing for Domestic Flights](#)

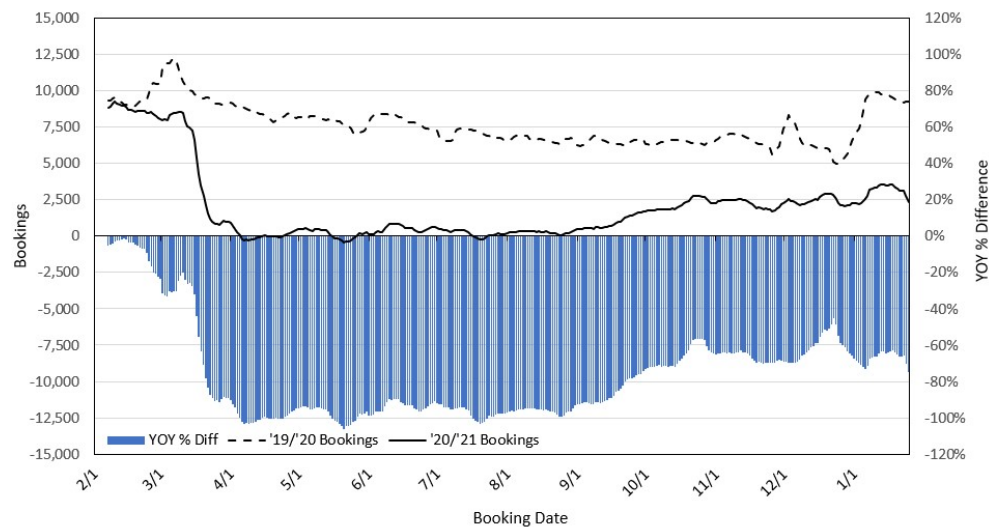
Travel Weekly: [From hotels to cruises, Covid vaccines will cause side effects for travel](#)

Forbes: [Best Of The Best: Tripadvisor's Popular, Trending And Emerging Destinations For 2021](#)

Jeffsetter Travel: [Maui Requires AlohaSafe Alert App](#)

Tripsavvy: [This Country Is Open to Travelers From Anywhere—as Long as You're Vaccinated](#)

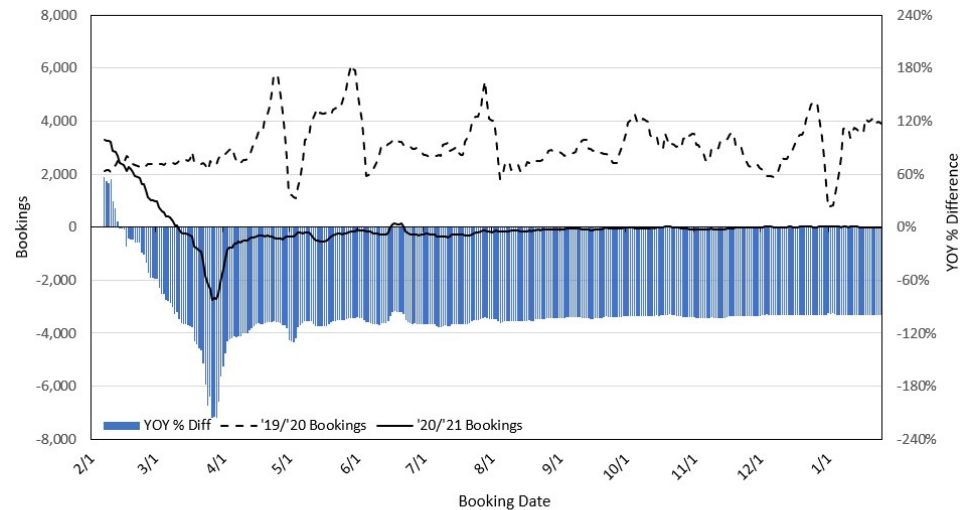
Travel Agency Bookings to Hawaii for Future Arrivals* Based on a 7-day Moving Average, as of January 25, 2021 U.S.



*Future Arrivals refers to all arrivals that are 'future' relative to the referenced booking date.
Source: Global Agency Pro

Update: Jan 25, 2021

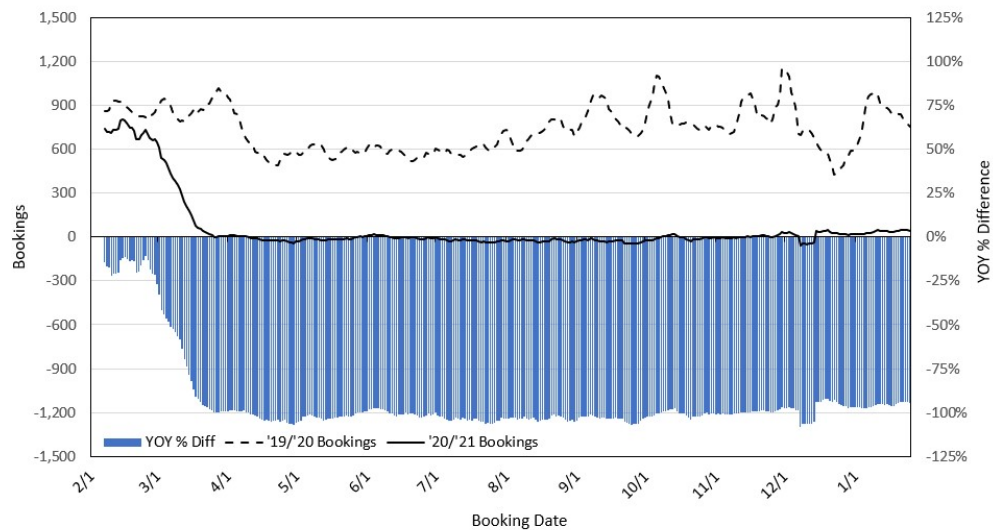
Travel Agency Bookings to Hawaii for Future Arrivals* Based on a 7-day Moving Average, January 25, 2021 Japan



*Future Arrivals refers to all arrivals that are 'future' relative to the referenced booking date.
Source: Global Agency Pro

Update: Jan 25, 2021

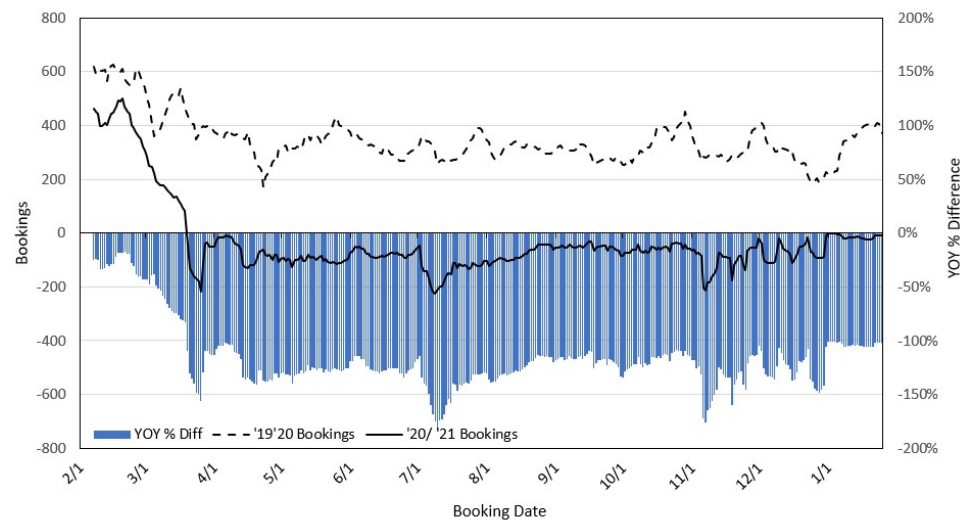
Travel Agency Bookings to Hawaii for Future Arrivals* Based on a 7-day Moving Average, as of January 25, 2021 Canada



*Future Arrivals refers to all arrivals that are 'future' relative to the referenced booking date.
Source: Global Agency Pro

Update: Jan 25, 2021

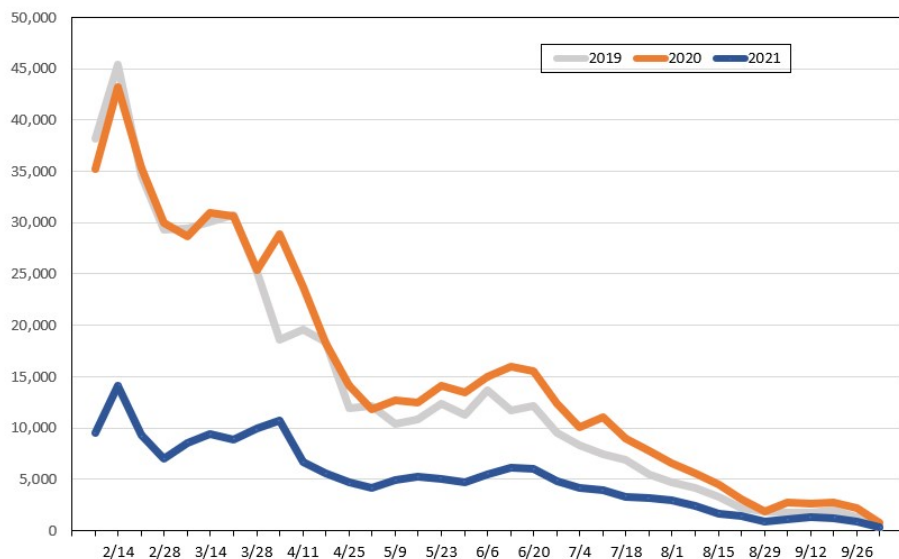
Travel Agency Bookings to Hawaii for Future Arrivals* Based on a 7-day Moving Average, as of January 25, 2021 Australia



*Future Arrivals refers to all arrivals that are 'future' relative to the referenced booking date.
Source: Global Agency Pro

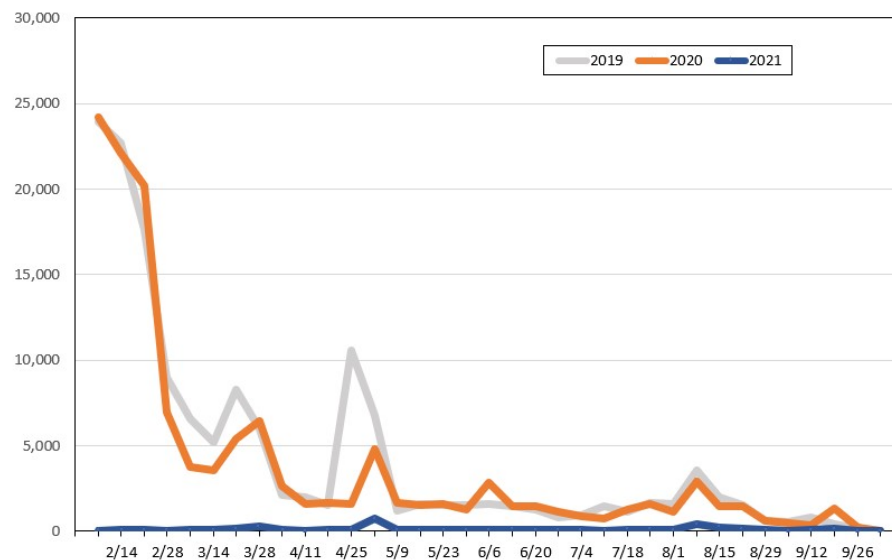
Update: Jan 25, 2021

Travel Agency Weekly Bookings for Future Travel to Hawai'i as of January 25, 2021
U.S.



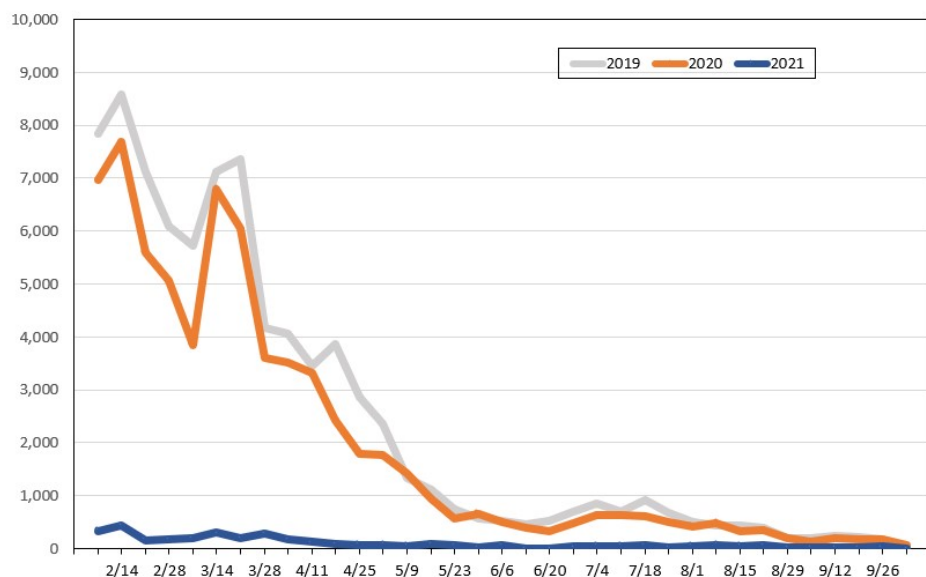
Source: Global Agency Pro, as of January 25, 2021

Travel Agency Weekly Bookings for Future Travel to Hawai'i as of January 25, 2021
Japan



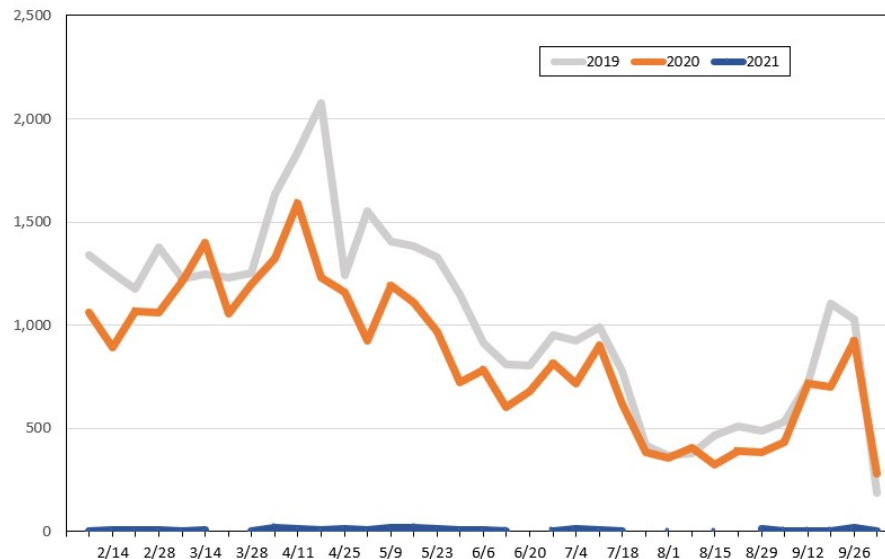
Source: Global Agency Pro, as of January 25, 2021

Travel Agency Weekly Bookings for Future Travel to Hawai'i as of January 25, 2021
Canada



Source: Global Agency Pro, as of January 25, 2021

Travel Agency Weekly Bookings for Future Travel to Hawai'i as of January 25, 2021
Australia



Source: Global Agency Pro, as of January 25, 2021