

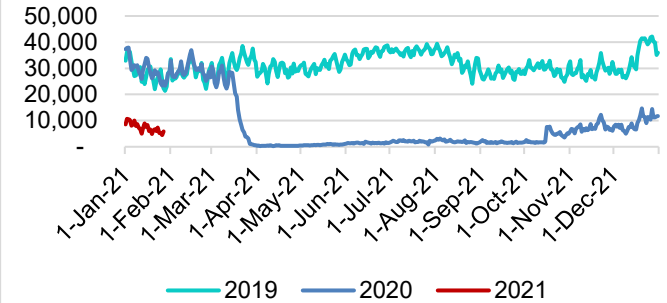
# HTA COVID-19 UPDATE

(Issued: 1/28/21 @ 4:30pm)

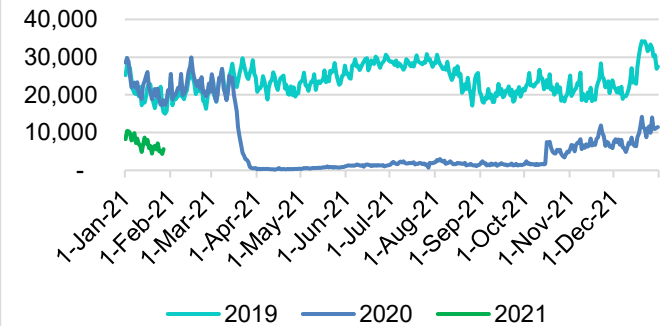
Reason for Trip by Arrival Airport - Transpacific Screened Passengers as of 01/27/21	Honolulu (HNL)	Kahului (OGG)	Kona (KOA)	Lihue (LIH)	Grand Total
Airline Crew	376	178	86	10	650
Connecting Flight (Transit)	289	7	1	1	298
Corporate Meeting	8	5	1	0	14
Essential Worker	97	22	4	3	126
Honeymoon	5	2	0	0	7
Intended Resident	77	17	7	4	105
Military or Federal Government	82	10	0	5	97
Other	42	7	7	1	57
Other Business	43	15	11	2	71
Pleasure/Vacation	1,322	1,526	536	20	3,404
Returning Resident	582	118	91	13	804
Sports Event	29	0	0	0	29
To Attend School	6	0	1	0	7
To Get Married	2	4	0	0	6
Transit	3	0	0	0	3
Visiting Friends or Relatives	583	187	151	6	927
<b>Grand Total</b>	<b>3,546</b>	<b>2,098</b>	<b>896</b>	<b>65</b>	<b>6,605</b>

**Source:** Safe Travels program developed by the State of Hawaii Office of Enterprise Technology Services  
**Note:** The data is preliminary and subject to change

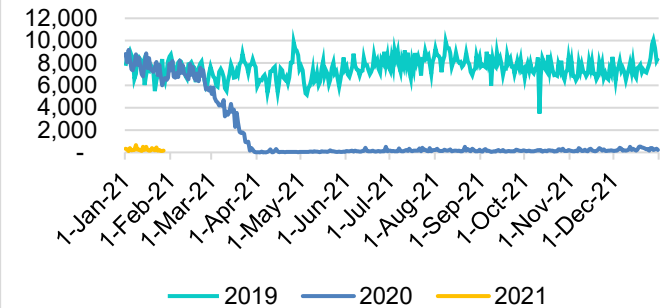
## Total Passenger Count (excluding flights from Canada)



## Domestic Passenger Count



## International Passenger Count (excluding flights from Canada)



## Daily Passenger Count Table

01/27/2021	Domestic	International	Total
Oahu	2984	169	3153
Maui	1817		1817
Island of Hawaii	786		786
Kauai	48		48
State	5635	169	5804

## Novel Coronavirus in Hawaii

### COVID-19 Positive Cases

Cumulative totals as of 12:00pm on January 28, 2021

Total Confirmed Cases	25,541* (100 new)
Hawaii	2,139
Kauai	178
Lanai	107
Maui	1682†
Molokai	25
Oahu	20,707
Out of State	703
Pending	0
Required Hospitalization	1684‡
Hawaii Deaths	406
Cases in the past 14 days	1,539*

## Footnotes for COVID-19 Cases

\* As a result of updated information, one case from out-of-state was removed from the counts.

\*\*Using cases reported in the past 14 days provides a rough approximation of the number of cases currently meeting criteria for isolation. This proxy number for "active cases" resolves classification issues for cases unable to be reached or who are out of jurisdiction, for whom precise release from isolation date may not be possible to determine. It is also not influenced by lags in data entry. (This total does not include Hawaii residents diagnosed outside of Hawaii)

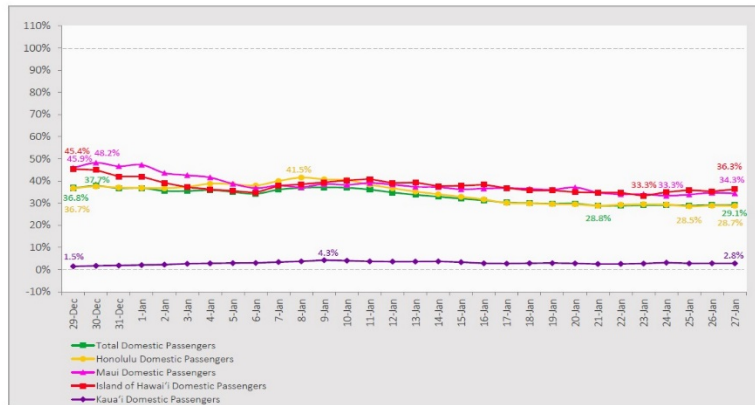
†One case is a Lanai resident whose exposure is on Maui Island and who will be remaining on Maui Island for the interim.

‡Includes Hawaii residents hospitalized out of state.

## 7-Day Domestic by Island Moving Average Daily Passenger Volume

2021 Volume as Percentage of 2020 Volume

Through January 27, 2021



## Domestic by Island Month-to-Date and Year-to-Date Daily Passenger Volume

2021 Volume versus 2020 Volume

Through January 27, 2021

January 2021 (Month-to-Date through January 27)

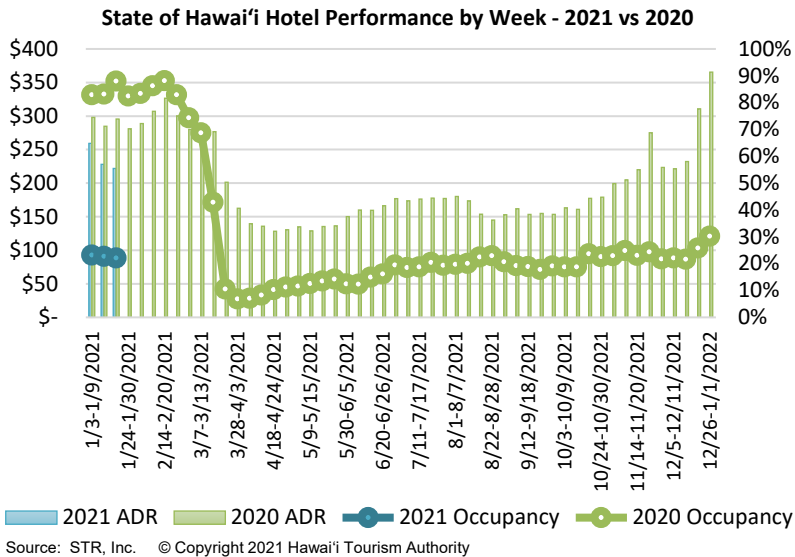
	2021	2020	Volume Change	Percent Change
Honolulu	110,102	342,247	-232,145	-67.8%
Maui County	53,714	151,857	-98,143	-64.6%
Island of Hawai'i	26,163	74,839	-48,676	-65.0%
Kaua'i	1,545	51,128	-49,583	-97.0%
Total	191,524	620,071	-428,547	-69.1%

2021 (Year-to-Date through January 27)

	2021	2020	Volume Change	Percent Change
Honolulu	110,102	342,247	-232,145	-67.8%
Maui County	53,714	151,857	-98,143	-64.6%
Island of Hawai'i	26,163	74,839	-48,676	-65.0%
Kaua'i	1,545	51,128	-49,583	-97.0%
Total	191,524	620,071	-428,547	-69.1%

Source: HVCB analysis based on data from DBEDT

Note: Passenger volume figures include both visitors and residents. Total includes other international passengers.

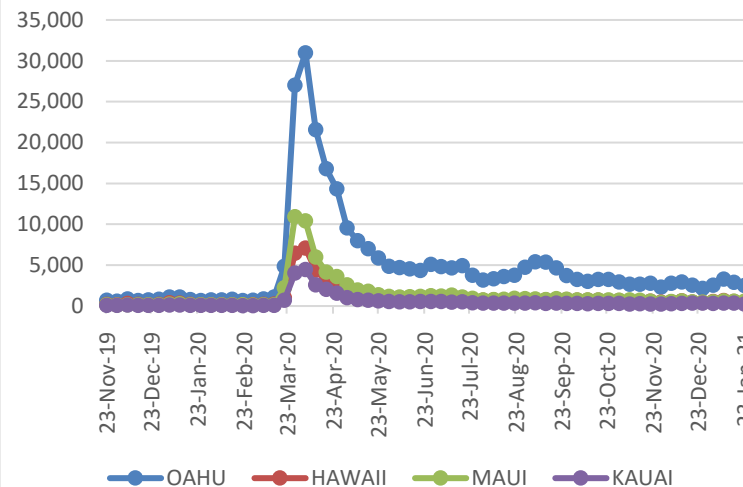


## Hawaii Hotel Performance Info:

For the week of January 17 – January 23, 2021

	Occupancy	ADR	RevPAR
State of Hawaii	22.1%	\$221.90	\$48.99
Oahu	21.7%	\$158.77	\$34.45
Maui County	20.1%	\$383.23	\$77.04
Kauai County	19.7%	\$165.50	\$32.54
Island of Hawaii	28.8%	\$222.52	\$64.16

## 2021 Initial Weekly Unemployment Claims by Island



## Weekly Unemployment Initial Claims: January 23, 2021

State of Hawaii	3,927
C&C of Oahu	2,482
Hawaii County	499
Maui County	572
Kauai County	218
Agent (filed in Hawaii against another state)	156

## News Highlights

January 28, 2021

**Honolulu Star Advertiser:** [Hawaii Gov. David Ige opens pre-arrival testing program to South Korea](#)

**Hawaii News Now:** [Hawaii Tourism Authority faces possible defunding by state](#)

**Big Island Now:** [COVID-19 Testing Capacity Quadrupled](#)

**The Garden Island:** [One new case of COVID-19 announced](#)

**Hawaii Tribune-Herald:** [Some Big Island teachers get first dose of COVID vaccine](#)

**The Maui News:** [Seniors struggle to complete vaccine appointment process](#)

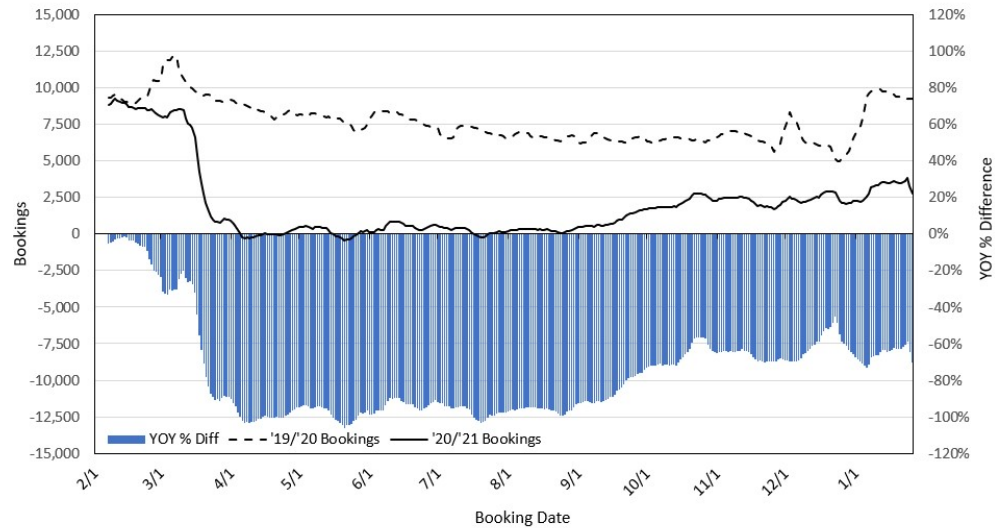
**Maui Now:** [Free Drive-Through COVID-19 Testing in Paia Jan. 28](#)

**West Hawaii Today:** [Water employees offered vaccinations: Employees moved ahead in line after letter to Ige](#)

**Skift:** [U.S. Airlines Fear 'Crushing' Blow From Possible Domestic Travel Testing Requirements](#)

**Travel Pulse:** [United Airlines Launches New Pre-Clearance Program to Hawaii](#)

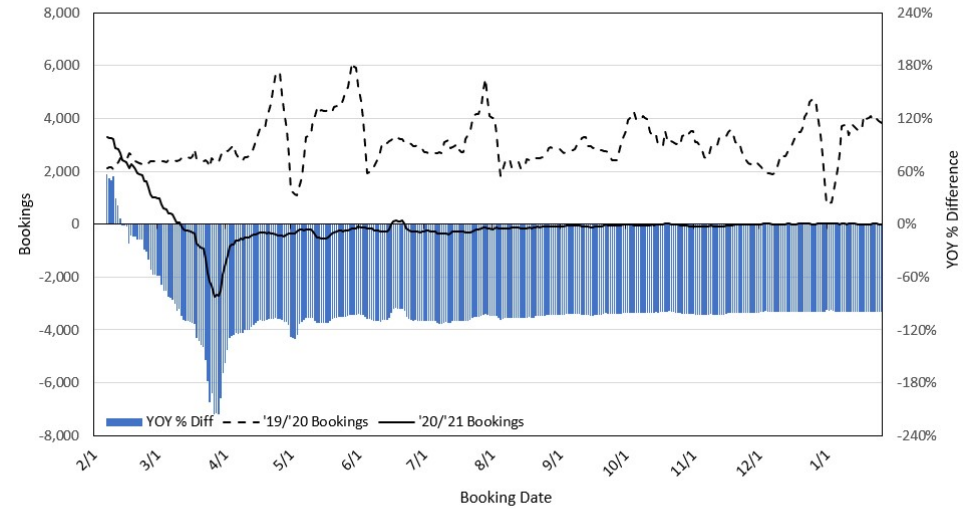
### Travel Agency Bookings to Hawaii for Future Arrivals\* Based on a 7-day Moving Average, as of January 26, 2021 U.S.



\*Future Arrivals refers to all arrivals that are 'future' relative to the referenced booking date.  
Source: Global Agency Pro

Update: Jan 26, 2021

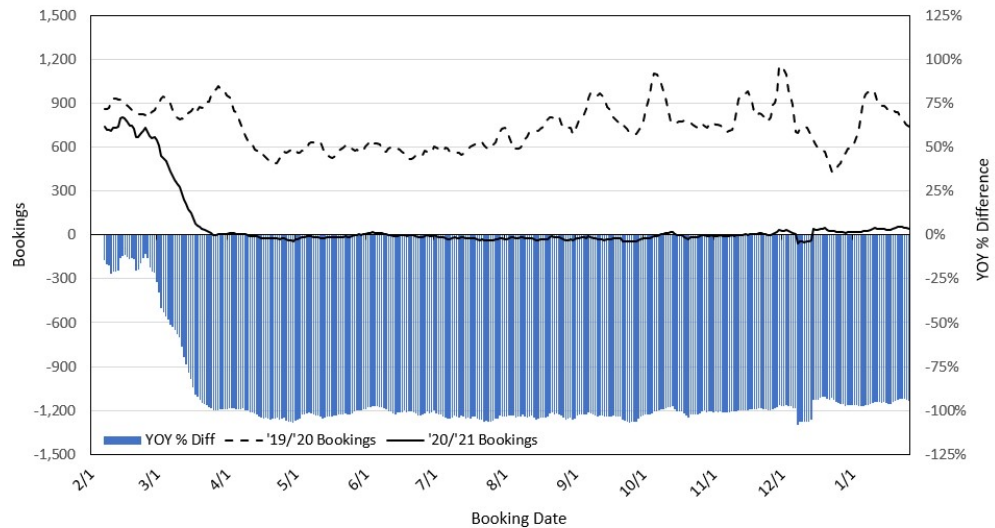
### Travel Agency Bookings to Hawaii for Future Arrivals\* Based on a 7-day Moving Average, as of January 26, 2021 Japan



\*Future Arrivals refers to all arrivals that are 'future' relative to the referenced booking date.  
Source: Global Agency Pro

Update: Jan 26, 2021

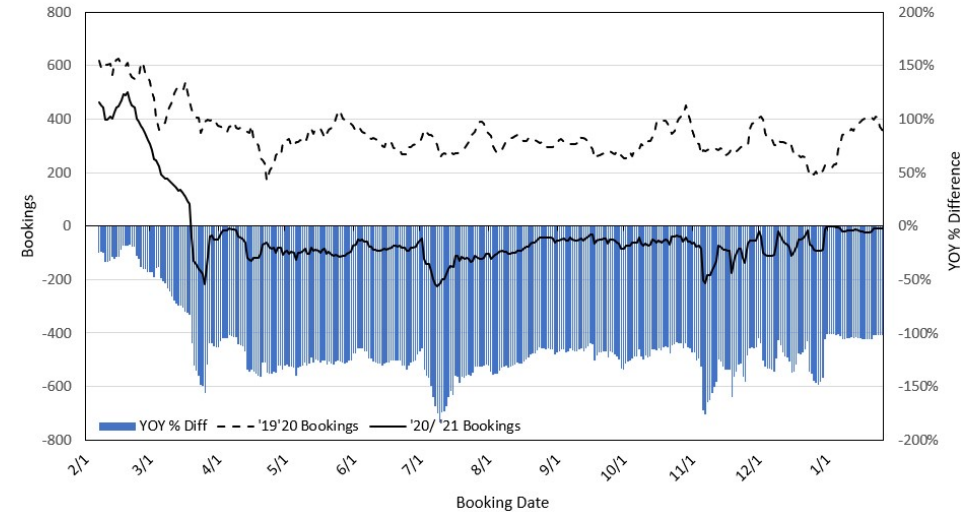
### Travel Agency Bookings to Hawaii for Future Arrivals\* Based on a 7-day Moving Average, as of January 26, 2021 Canada



\*Future Arrivals refers to all arrivals that are 'future' relative to the referenced booking date.  
Source: Global Agency Pro

Update: Jan 26, 2021

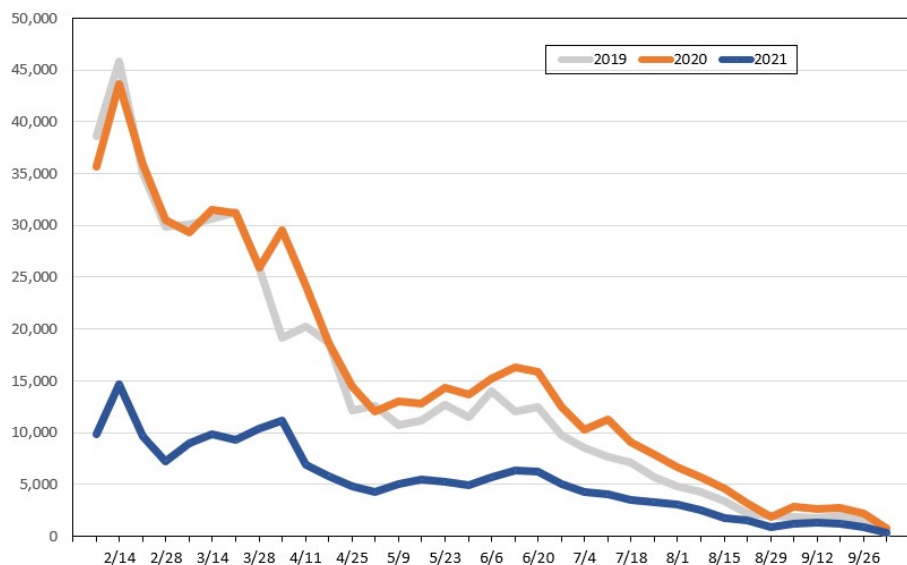
### Travel Agency Bookings to Hawaii for Future Arrivals\* Based on a 7-day Moving Average, as of January 26, 2021 Australia



\*Future Arrivals refers to all arrivals that are 'future' relative to the referenced booking date.  
Source: Global Agency Pro

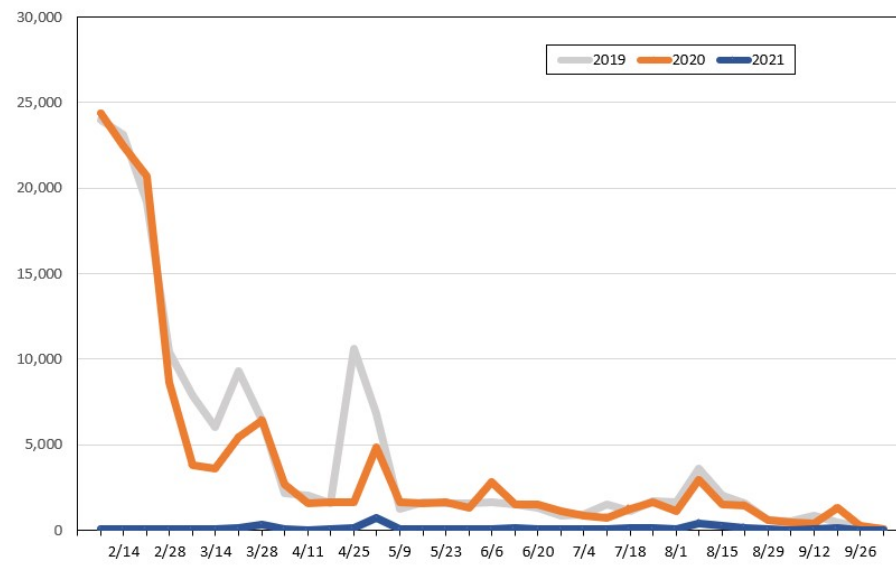
Update: Jan 26, 2021

**Travel Agency Weekly Bookings for Future Travel to Hawai'i as of January 26, 2021**  
U.S.



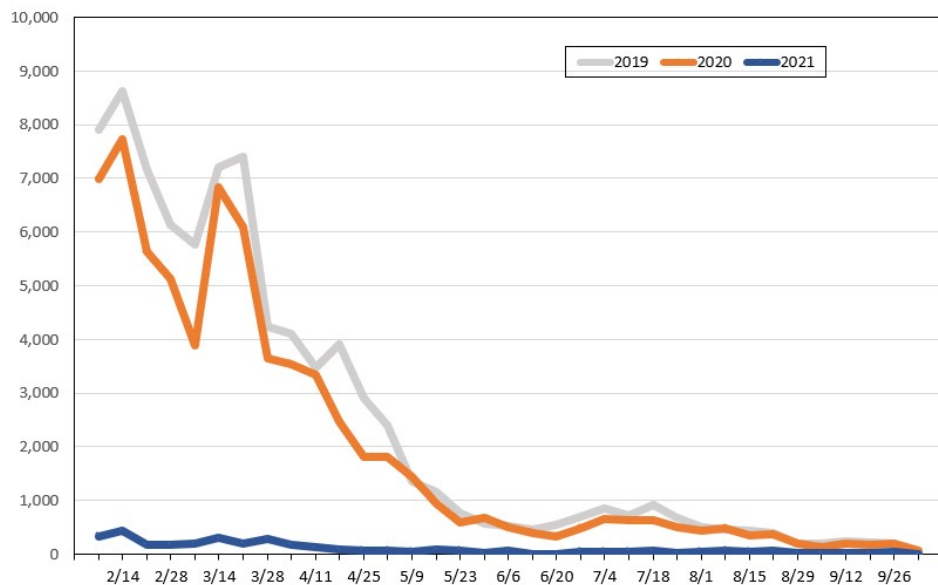
Source: Global Agency Pro, as of January 26, 2021

**Travel Agency Weekly Bookings for Future Travel to Hawai'i as of January 26, 2021**  
Japan



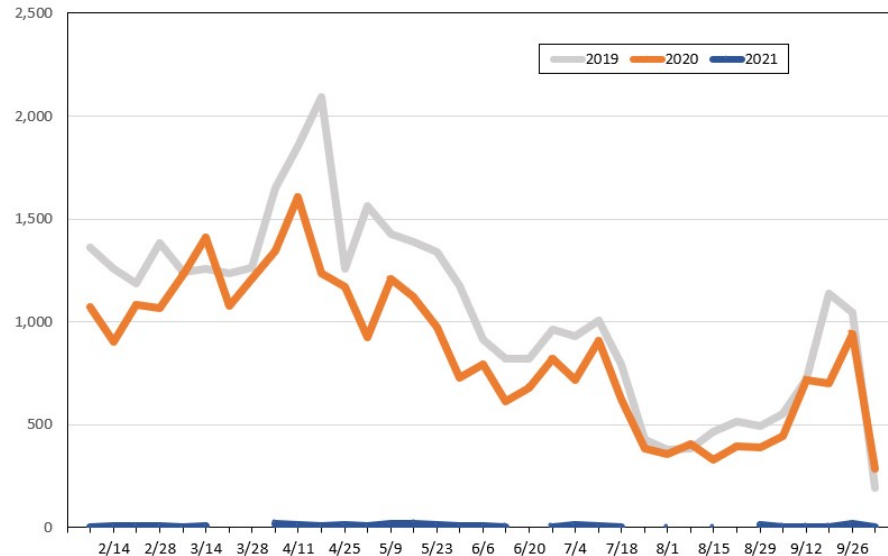
Source: Global Agency Pro, as of January 26, 2021

**Travel Agency Weekly Bookings for Future Travel to Hawai'i as of January 26, 2021**  
Canada



Source: Global Agency Pro, as of January 26, 2021

**Travel Agency Weekly Bookings for Future Travel to Hawai'i as of January 26, 2021**  
Australia



Source: Global Agency Pro, as of January 26, 2021