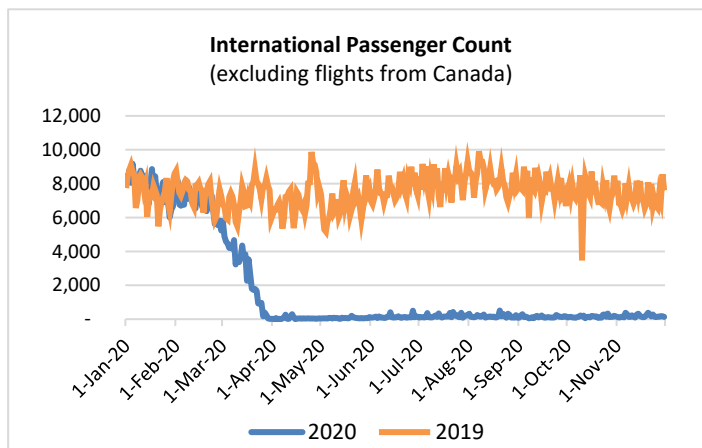
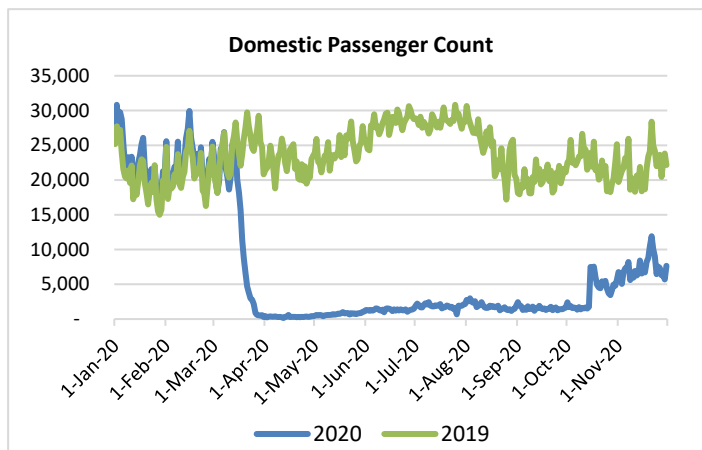
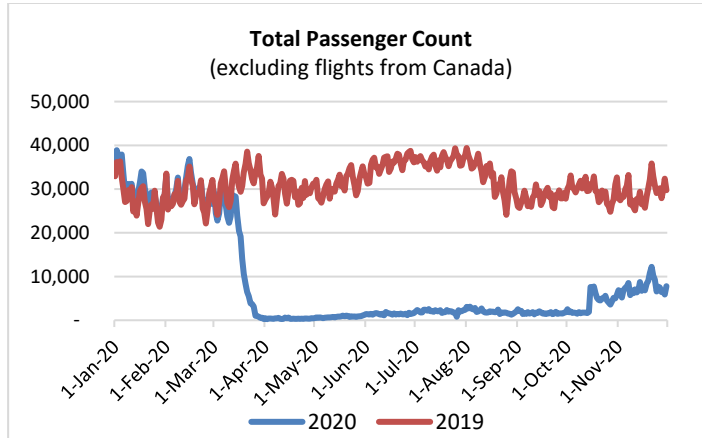


# HTA COVID-19 UPDATE

(Issued: 12/1/20 @ 4:30pm)

Reason for Trip by Arrival Airport - Transpacific Screened Passengers as of 11/30/20	Honolulu (HNL)	Kahului (OGG)	Kona (KOA)	Lihue (LIH)	Grand Total
Airline Crew	448	190	62	66	766
Connecting Flight (Transit)	251	14	1	3	269
Corporate Meeting	3	4	0	0	7
Essential Worker	248	42	27	28	345
Honeymoon	4	13	1	9	27
Incentive Trip	0	2	6	1	9
Intended Resident	119	37	14	15	185
Military or Federal Government	140	1	1	1	143
Other	49	5	2	13	69
Other Business	85	55	13	38	191
Pleasure/Vacation	949	1,240	443	502	3,134
Returning Resident	2,043	352	224	157	2,776
Sports Event	6	5	0	0	11
To Attend School	25	3	2	0	30
To Get Married	2	2	0	2	6
Transit	11	4	0	0	15
Visiting Friends or Relatives	538	140	79	136	893
<b>Grand Total</b>	<b>4,921</b>	<b>2,109</b>	<b>875</b>	<b>971</b>	<b>8,876</b>

**Source:** Safe Travels program developed by the State of Hawaii Office of Enterprise Technology Services  
**Note:** The data is preliminary and subject to change



## Daily Passenger Count Table

11/30/2020	Domestic	International	Total
Oahu	4440	131	4571
Maui	1583		1583
Island of Hawaii	772		772
Kauai	860		860
State	7655	131	7786

## Novel Coronavirus in Hawaii

### COVID-19 Positive Cases

Cumulative totals as of 12:00pm on December 1, 2020

Total Confirmed Cases	17,968* (44 new)
Hawaii	1,605
Kauai	113
Lanai	106
Maui	547†
Molokai	18
Oahu	15,362
Out of State	217
Pending	0
Required Hospitalization	1,291‡
Hawaii Deaths	244
Cases in the past 14 days	1,243**

### Footnotes for COVID-19 Cases

\*\*Using cases reported in the past 14 days provides a rough approximation of the number of cases currently meeting criteria for isolation. This proxy number for "active cases" resolves classification issues for cases unable to be reached or who are out of jurisdiction, for whom precise release from isolation date may not be possible to determine. It is also not influenced by lags in data entry. (This total does not include Hawaii residents diagnosed outside of Hawaii)

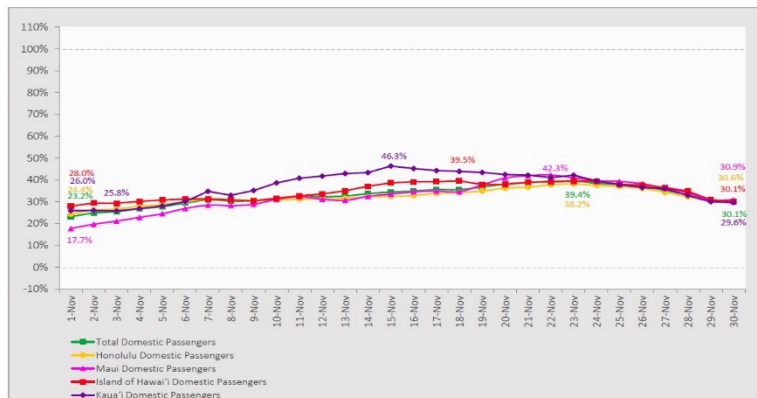
†One case is a Lanai resident whose exposure is on Maui Island and who will be remaining on Maui Island for the interim.

‡Includes Hawaii residents hospitalized out of state.

§Includes cases that meet isolation release criteria (Isolation should be maintained until at least 24 hours after resolution of fever and myalgia without the use of antipyretics OR at least 10 days have passed since symptom onset, whichever is longer). (The cases that have died and one case that has left the jurisdiction have been removed from these counts). Positive cases include confirmed cases, and Hawaii residents and non-residents; data are preliminary and subject to change. Note that CDC provides case counts according to states of residence.

## 7-Day Domestic by Island Moving Average Daily Passenger Volume

2020 Volume as Percentage of 2019 Volume  
Through November 30, 2020



Source: HVCB analysis based on data from DBEDT  
Note: Passenger volume figures include both visitors and residents.

## Domestic by Island Month-to-Date and Year-to-Date Daily Passenger Volume

2020 Volume versus 2019 Volume  
Through November 30, 2020

November 2020 (Month-End)

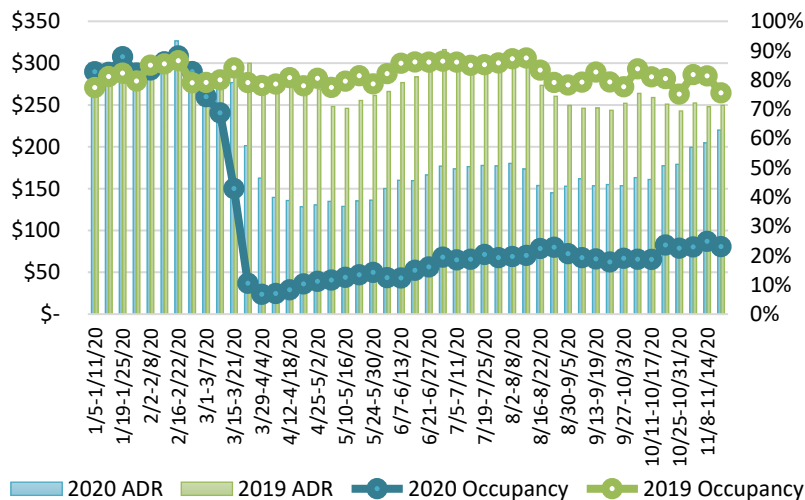
	2020	2019	Volume Change	Percent Change
Honolulu	118,198	358,040	-239,842	-67.0%
Maui County	56,691	169,883	-113,192	-66.6%
Island of Hawai'i	23,953	68,611	-44,658	-65.1%
Kaua'i	21,866	59,233	-37,367	-63.1%
Total	220,708	655,767	-435,059	-66.3%

2020 (Year-to-Date through November 30)

	2020	2019	Volume Change	Percent Change
Honolulu	1,356,417	4,212,364	-2,855,947	-67.8%
Maui County	533,760	2,045,601	-1,511,841	-73.9%
Island of Hawai'i	264,343	890,319	-625,976	-70.3%
Kaua'i	182,331	699,855	-517,524	-73.9%
Total	2,336,851	7,848,139	-5,511,288	-70.2%

Source: HVCB analysis based on data from DBEDT  
Note: Passenger volume figures include both visitors and residents. Total includes other international passengers. 2020 includes one additional day due to Leap Year (February 29th, 2020).

## State of Hawai'i Hotel Performance by Week - 2020 vs 2019



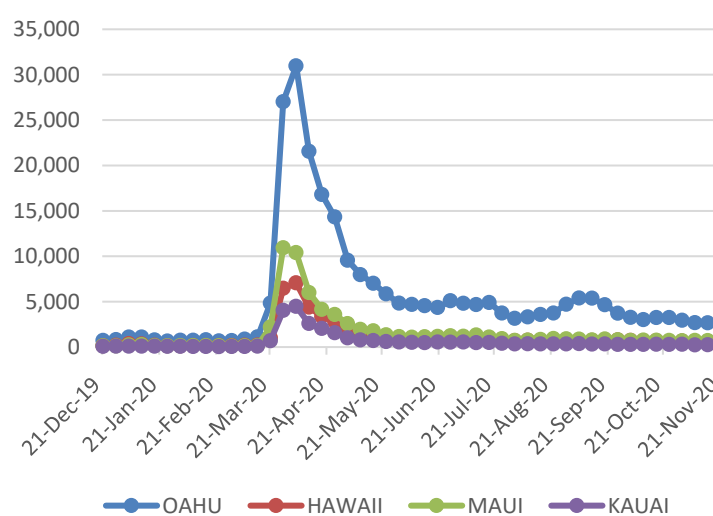
Source: STR, Inc. © Copyright 2020 Hawai'i Tourism Authority

## Hawaii Hotel Performance Info:

For the week of November 15 – November 21, 2020

	Occupancy	ADR	RevPAR
State of Hawaii	23.1%	\$ 220.00	\$ 50.77
Oahu	22.9%	\$ 164.59	\$ 37.63
Maui County	20.4%	\$ 345.95	\$ 70.41
Kauai County	29.0%	\$ 212.44	\$ 61.62
Island of Hawaii	25.8%	\$ 216.67	\$ 55.91

## 2020 Initial Weekly Unemployment Claims by Island



## Weekly Unemployment Initial Claims: November 21, 2020

State of Hawaii	4,258
C&C of Oahu	2,782
Hawaii County	574
Maui County	588
Kauai County	219
Agent (filed in Hawaii against another state)	95

## News Highlights

December 1, 2020

**Hawaii News Now:** [Business leaders, legislators urge governor to rethink new restrictions on pre-travel testing program](#)

**KHON2:** [Free drive-through COVID-19 testing to be offered on Hawaii Island](#)

**Hawaii Tribune-Herald:** [Ige: Safe Travels is working](#)

**Hawaii Tribune-Herald:** [Post-arrival testing to ramp up in Kona](#)

**Big Island Now:** [House Committee Asks Governor to Rollback New Travel Requirement](#)

**The Garden Island:** [Kawakami defends opt-out](#)

**The Maui News:** [Panels suggest easing pre-travel restrictions](#)

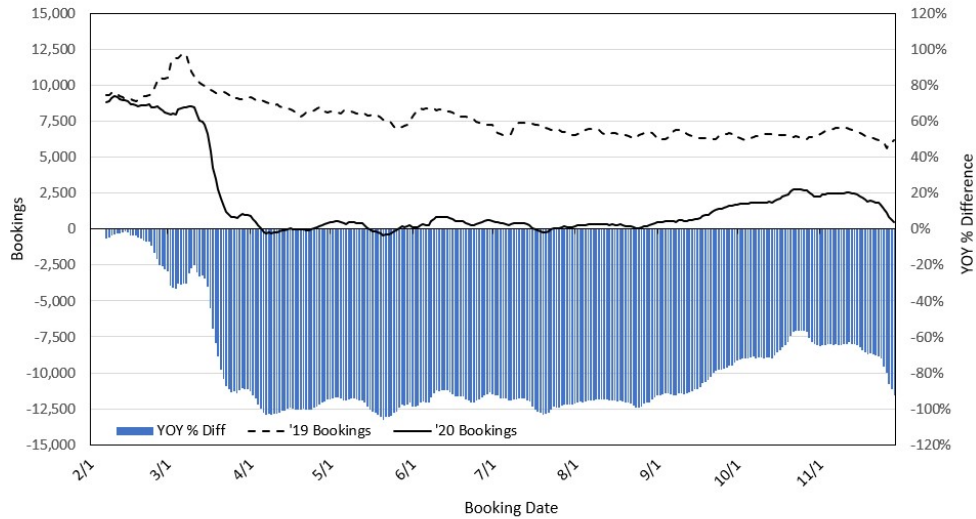
**Lonely Planet:** [Swap winter for sunshine in Hawaii with this new remote worker program](#)

**TravelAge West:** [An On-the-Ground Look at Hawaii's Restart to Tourism](#)

**Travel Weekly:** [Kauai makes two-week quarantine mandatory](#)

**Business Traveler:** [WestJet Offers Pre-flight Testing for Canadian Travelers to Hawaii](#)

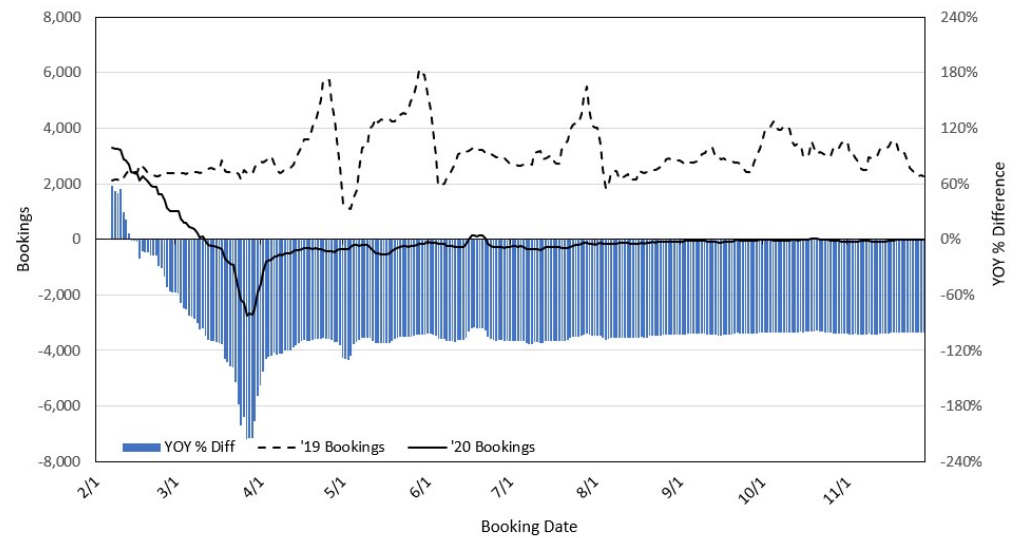
### Travel Agency Bookings to Hawaii for Future Arrivals\* Based on a 7-day Moving Average, 2020 vs 2019 U.S.



\*Future Arrivals refers to all arrivals that are 'future' relative to the referenced booking date.  
Source: Global Agency Pro

Update: Nov 29, 2020

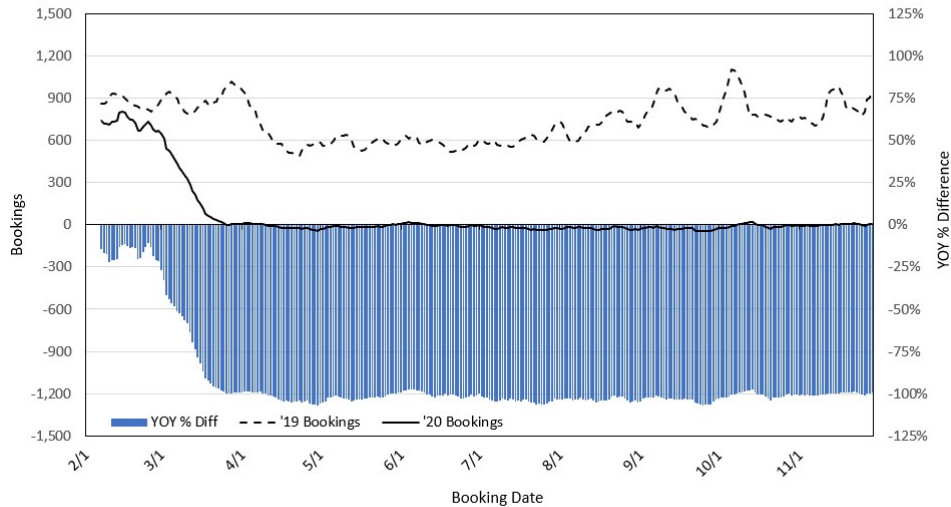
### Travel Agency Bookings to Hawaii for Future Arrivals\* Based on a 7-day Moving Average, 2020 vs 2019 Japan



\*Future Arrivals refers to all arrivals that are 'future' relative to the referenced booking date.  
Source: Global Agency Pro

Update: Nov 29, 2020

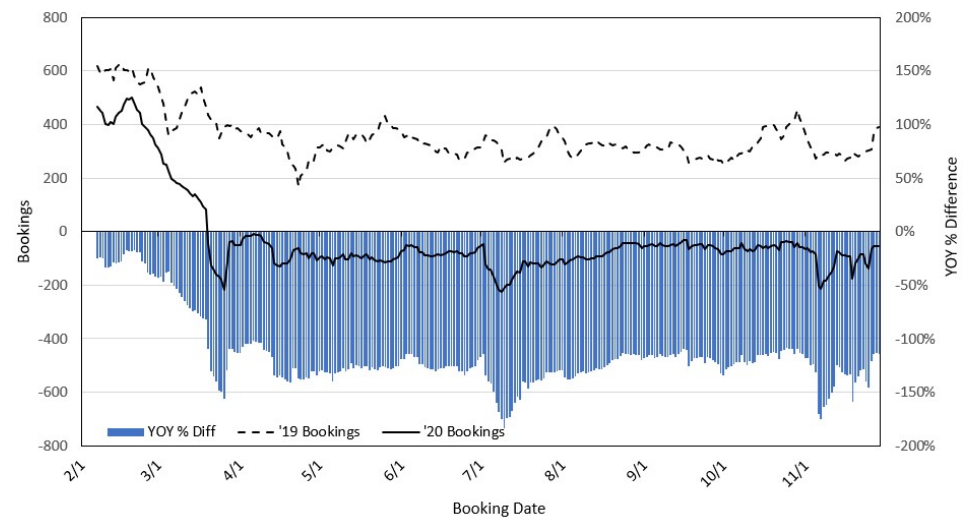
### Travel Agency Bookings to Hawaii for Future Arrivals\* Based on a 7-day Moving Average, 2020 vs 2019 Canada



\*Future Arrivals refers to all arrivals that are 'future' relative to the referenced booking date.  
Source: Global Agency Pro

Update: Nov 29, 2020

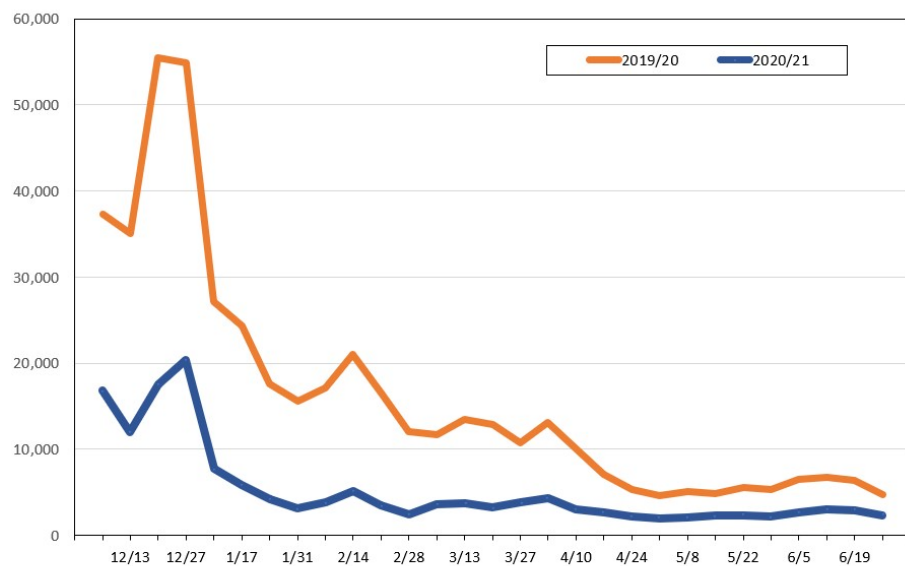
### Travel Agency Bookings to Hawaii for Future Arrivals\* Based on a 7-day Moving Average, 2020 vs 2019 Australia



\*Future Arrivals refers to all arrivals that are 'future' relative to the referenced booking date.  
Source: Global Agency Pro

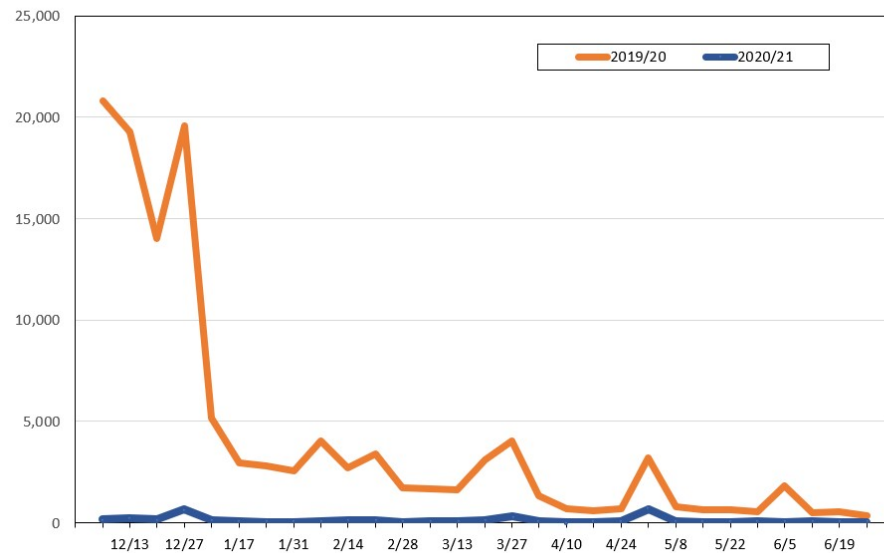
Update: Nov 29, 2020

**Travel Agency Weekly Bookings for Future Travel to Hawai'i as of November 29, 2020**  
U.S.



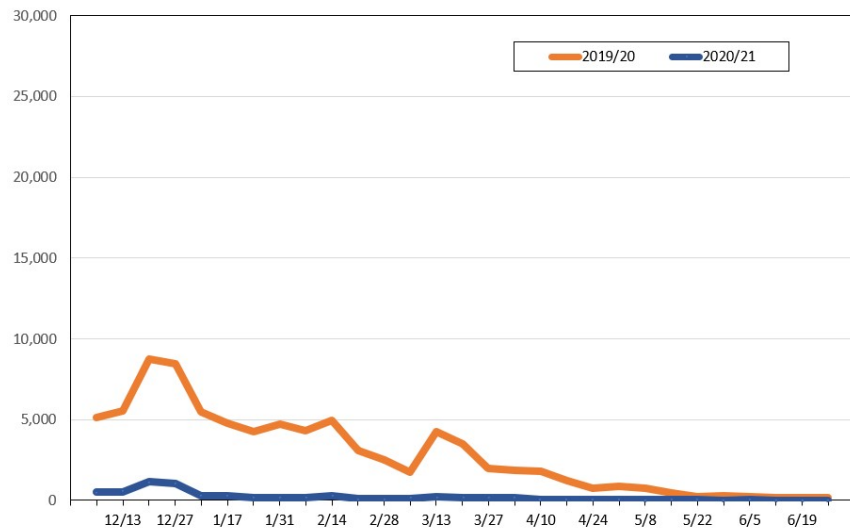
Source: Global Agency Pro, as of November 29, 2020

**Travel Agency Weekly Bookings for Future Travel to Hawai'i as of November 29, 2020**  
Japan



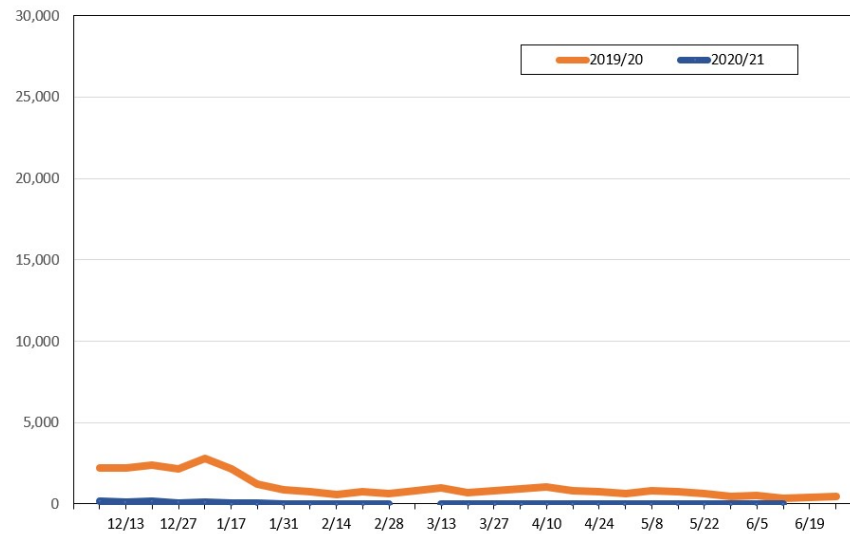
Source: Global Agency Pro, as of November 29, 2020

**Travel Agency Weekly Bookings for Future Travel to Hawai'i as of November 29, 2020**  
Canada



Source: Global Agency Pro, as of November 29, 2020

**Travel Agency Weekly Bookings for Future Travel to Hawai'i as of November 29, 2020**  
Australia



Source: Global Agency Pro, as of November 29, 2020