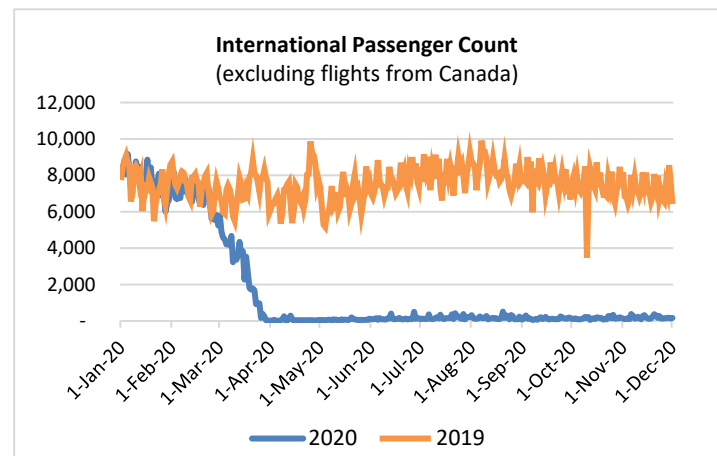
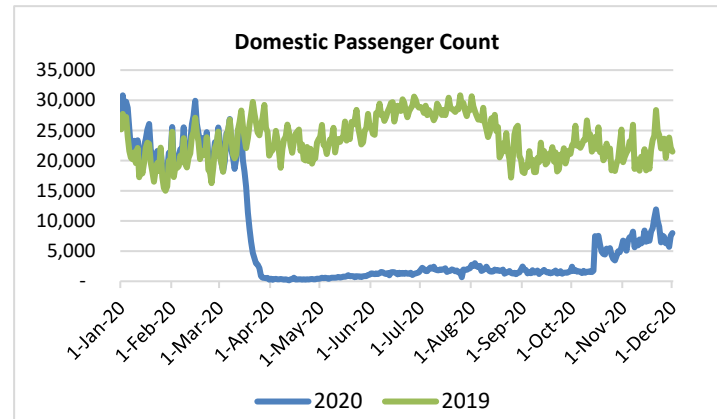
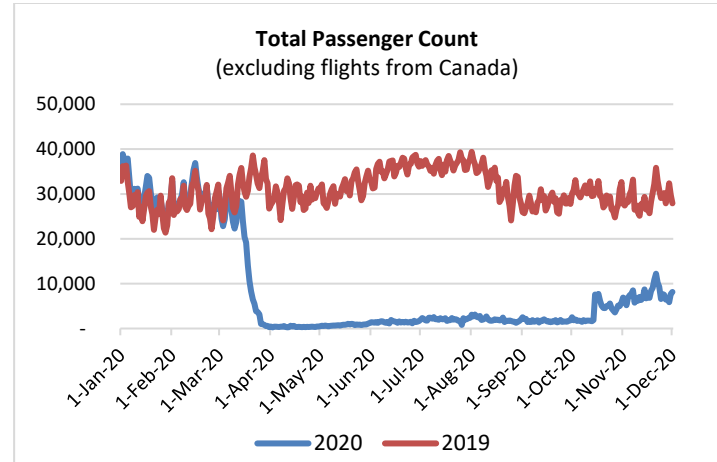


HTA COVID-19 UPDATE

(Issued: 12/2/20 @ 4:30pm)

Reason for Trip by Arrival Airport - Transpacific Screened Passengers as of 12/01/20	Honolulu (HNL)	Kahului (OGG)	Kona (KOA)	Lihue (LIH)	Grand Total
Airline Crew	397	180	57	68	702
Connecting Flight (Transit)	252	8	3	1	264
Corporate Meeting	3	5	1	0	9
Essential Worker	166	30	21	14	231
Honeymoon	3	14	5	7	29
Incentive Trip	1	5	0	1	7
Intended Resident	127	39	17	19	202
Military or Federal Government	152	1	0	2	155
Other	61	18	15	18	112
Other Business	54	48	15	19	136
Pleasure/Vacation	1,283	1,518	472	662	3,935
Returning Resident	1,488	225	161	153	2,027
Sports Event	9	4	0	0	13
To Attend School	10	0	0	0	10
To Get Married	6	5	2	2	15
Transit	6	0	0	0	6
Visiting Friends or Relatives	753	217	151	211	1,332
Grand Total	4,771	2,317	920	1,177	9,185
Source: Safe Travels program developed by the State of Hawaii Office of Enterprise Technology Services					
Note: The data is preliminary and subject to change					



Daily Passenger Count Table

12/01/2020	Domestic	International	Total
Oahu	4108	168	4276
Maui	2023		2023
Island of Hawaii	806		806
Kauai	1053		1053
State	7990	168	8158

Novel Coronavirus in Hawaii

COVID-19 Positive Cases

Cumulative totals as of 12:00pm on December 2, 2020

Total Confirmed Cases	18,044* (78 new)
Hawaii	1,606
Kauai	114
Lanai	106
Maui	551†
Molokai	18
Oahu	15,424
Out of State	225
Pending	0
Required Hospitalization	1,304‡
Hawaii Deaths	244
Cases in the past 14 days	1,250**

Footnotes for COVID-19 Cases

*As a result of updated information, one HI resident diagnosed out of state and one case from Oahu were dropped from the counts.

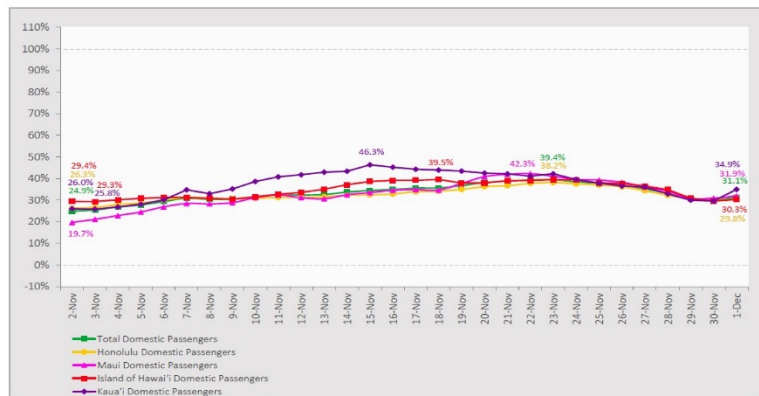
**Using cases reported in the past 14 days provides a rough approximation of the number of cases currently meeting criteria for isolation. This proxy number for "active cases" resolves classification issues for cases unable to be reached or who are out of jurisdiction, for whom precise release from isolation date may not be possible to determine. It is also not influenced by lags in data entry. (This total does not include Hawaii residents diagnosed outside of Hawaii)

†One case is a Lanai resident whose exposure is on Maui Island and who will be remaining on Maui Island for the interim.

#Includes Hawaii residents hospitalized out of state.
§Includes cases that meet isolation release criteria (Isolation should be maintained until at least 24 hours after resolution of fever and myalgia without the use of antipyretics OR at least 10 days have passed since symptom onset, whichever is longer). (The cases that have died and one case that has left the jurisdiction have been removed from these counts). Positive cases include confirmed cases, and Hawaii residents and non-residents; data are preliminary and subject to change. Note that CDC provides case counts according to states of residence.

7-Day Domestic by Island Moving Average Daily Passenger Volume

2020 Volume as Percentage of 2019 Volume
Through December 1, 2020



Source: HVCB analysis based on data from DBEDT
Note: Passenger volume figures include both visitors and residents.

Domestic by Island Month-to-Date and Year-to-Date Daily Passenger Volume

2020 Volume versus 2019 Volume
Through December 1, 2020

December 2020 (Month-to-Date through December 1)

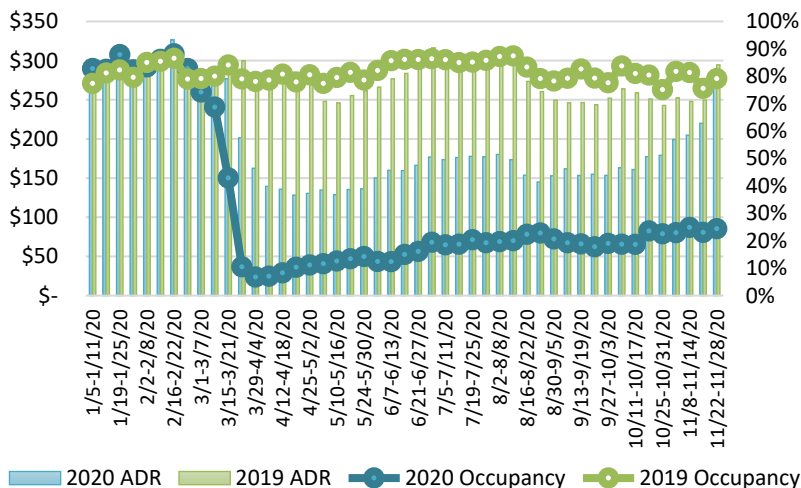
	2020	2019	Volume Change	Percent Change
Honolulu	4,108	13,297	-9,189	-69.1%
Maui County	2,023	6,092	-4,069	-66.8%
Island of Hawai'i	806	2,377	-1,571	-66.1%
Kaua'i	1,053	2,057	-1,004	-48.8%
Total	7,989	23,823	-15,834	-66.5%

2020 (Year-to-Date through December 1)

	2020	2019	Volume Change	Percent Change
Honolulu	1,360,525	4,225,661	-2,865,136	-67.8%
Maui County	535,783	2,051,693	-1,515,911	-73.9%
Island of Hawai'i	265,056	892,696	-627,640	-70.3%
Kaua'i	183,383	701,912	-518,529	-73.9%
Total	2,344,747	7,871,962	-5,527,215	-70.2%

Source: HVCB analysis based on data from DBEDT
Note: Passenger volume figures include both visitors and residents. Total includes other international passengers. 2020 includes one additional day due to Leap Year (February 29th, 2020).

State of Hawai'i Hotel Performance by Week - 2020 vs 2019



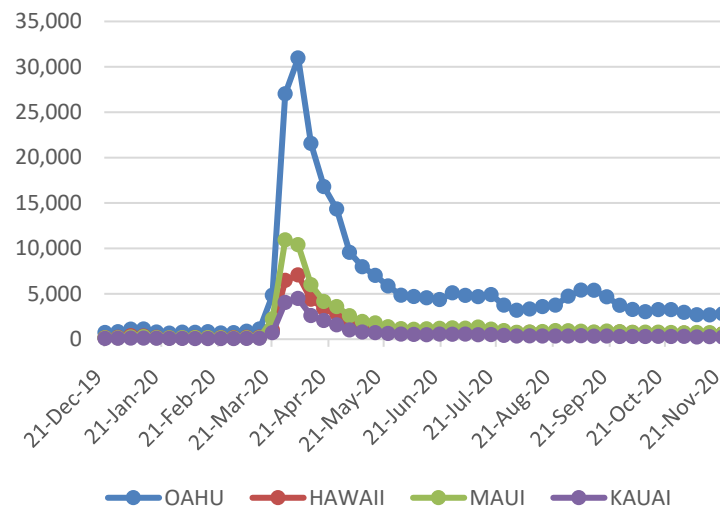
Source: STR, Inc. © Copyright 2020 Hawai'i Tourism Authority

Hawaii Hotel Performance Info:

For the week of November 22 – November 28, 2020

	Occupancy	ADR	RevPAR
State of Hawaii	24.4%	\$ 275.04	\$ 67.10
Oahu	22.7%	\$ 177.47	\$ 40.28
Maui County	24.4%	\$ 475.52	\$ 116.07
Kauai County	33.0%	\$ 237.83	\$ 78.49
Island of Hawaii	25.7%	\$ 256.90	\$ 65.96

2020 Initial Weekly Unemployment Claims by Island



Weekly Unemployment Initial Claims: November 21, 2020

State of Hawaii	4,258
C&C of Oahu	2,782
Hawaii County	574
Maui County	588
Kauai County	219
Agent (filed in Hawaii against another state)	95

News Highlights

December 2, 2020

Honolulu Star Advertiser:

[Column: State's Safe Travels program is unsafe](#)

Honolulu Star Advertiser: [Kauai travel rules bring job, revenue losses](#)

KITV4: [Lt. Gov. Josh Green defends state's pre-travel test program, rejects more restrictions](#)

Hawaii News Now: [Hawaii County tackles logistical problems to ramp up traveler testing capabilities](#)

Honolulu Civil Beat: [Has The Hawaii Tourism Industry Lost Its Clout?](#)

The Garden Island: [Quarantine could mean end for businesses](#)

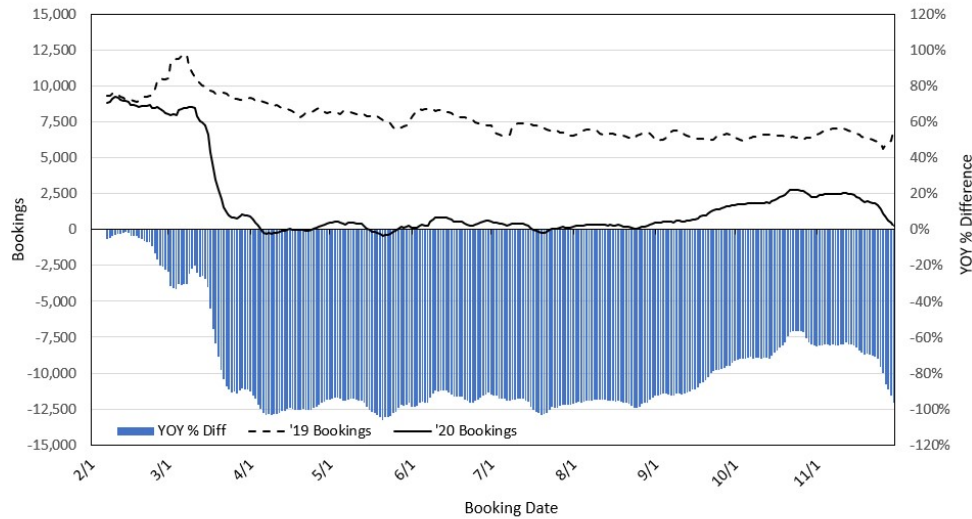
Hawaii Tribune-Herald: [Schatz to Ige: What's the plan for testing?](#)

SF Gate: [Report: Couple knowingly boarding SFO flight to Hawaii after positive COVID tests](#)

Travel Awaits: [Starting Today, Kauai Opting Out Of Hawaii's COVID Pre-Testing Program](#)

Travel Pulse: [COVID-19 December Travel Restrictions: Latest Quarantine Rules for US States](#)

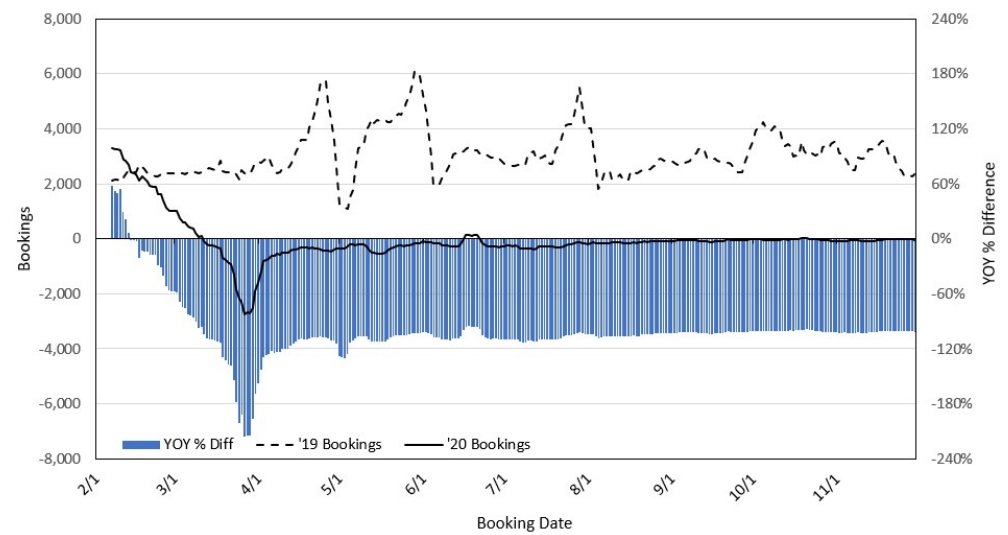
Travel Agency Bookings to Hawaii for Future Arrivals* Based on a 7-day Moving Average, 2020 vs 2019 U.S.



*Future Arrivals refers to all arrivals that are 'future' relative to the referenced booking date.
Source: Global Agency Pro

Update: Nov 30, 2020

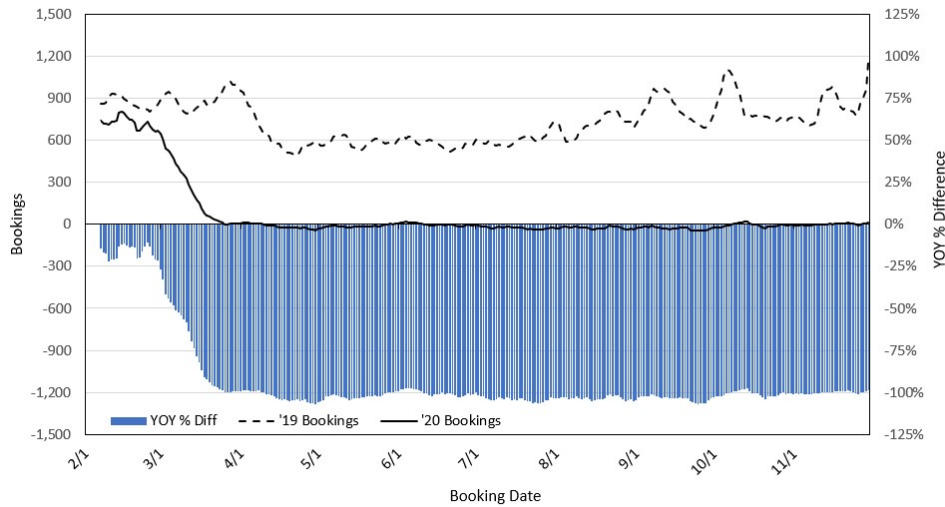
Travel Agency Bookings to Hawaii for Future Arrivals* Based on a 7-day Moving Average, 2020 vs 2019 Japan



*Future Arrivals refers to all arrivals that are 'future' relative to the referenced booking date.
Source: Global Agency Pro

Update: Nov 30, 2020

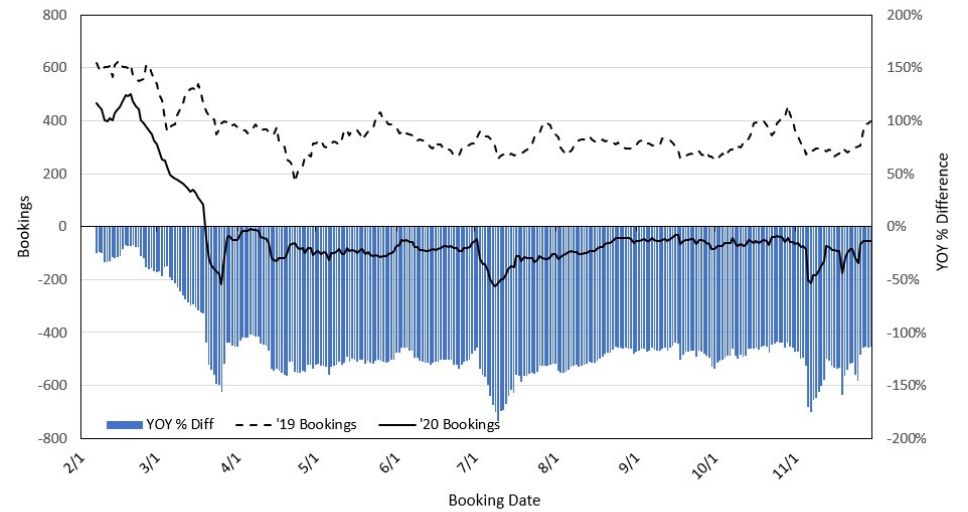
Travel Agency Bookings to Hawaii for Future Arrivals* Based on a 7-day Moving Average, 2020 vs 2019 Canada



*Future Arrivals refers to all arrivals that are 'future' relative to the referenced booking date.
Source: Global Agency Pro

Update: Nov 30, 2020

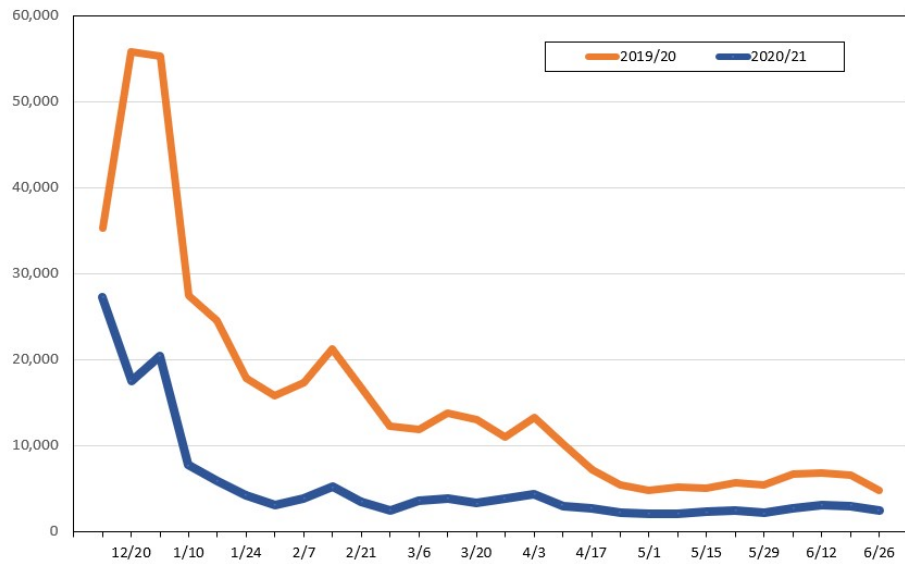
Travel Agency Bookings to Hawaii for Future Arrivals* Based on a 7-day Moving Average, 2020 vs 2019 Australia



*Future Arrivals refers to all arrivals that are 'future' relative to the referenced booking date.
Source: Global Agency Pro

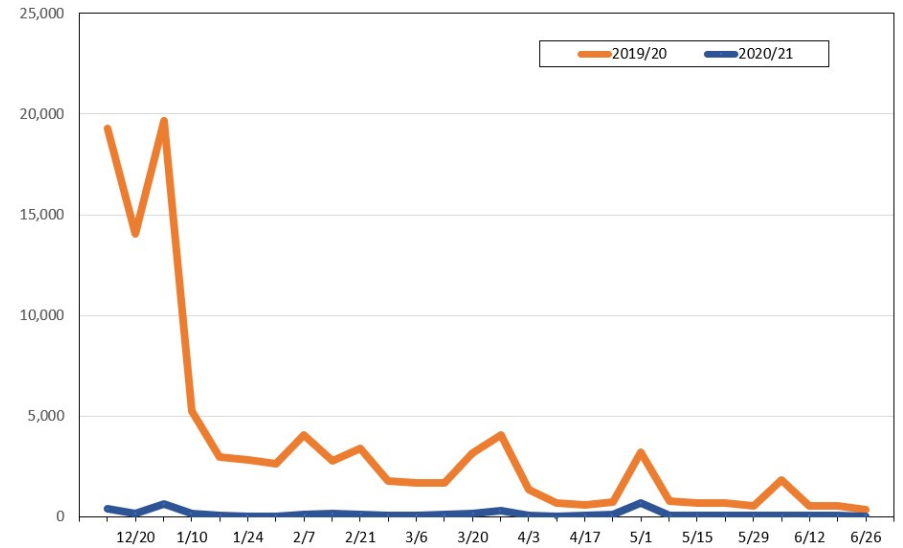
Update: Nov 30, 2020

Travel Agency Weekly Bookings for Future Travel to Hawai'i as of November 30, 2020
U.S.



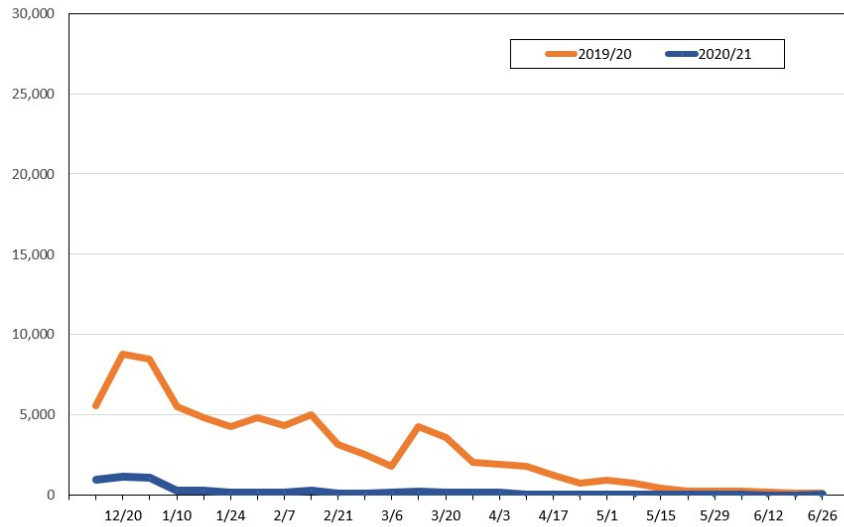
Source: Global Agency Pro, as of November 30, 2020

Travel Agency Weekly Bookings for Future Travel to Hawai'i as of November 30, 2020
Japan



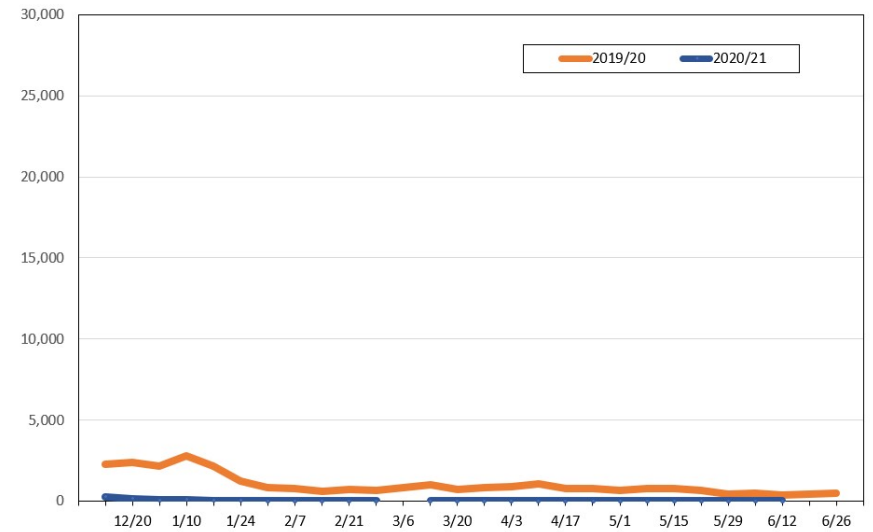
Source: Global Agency Pro, as of November 30, 2020

Travel Agency Weekly Bookings for Future Travel to Hawai'i as of November 30, 2020
Canada



Source: Global Agency Pro, as of November 30, 2020

Travel Agency Weekly Bookings for Future Travel to Hawai'i as of November 30, 2020
Australia



Source: Global Agency Pro, as of November 30, 2020