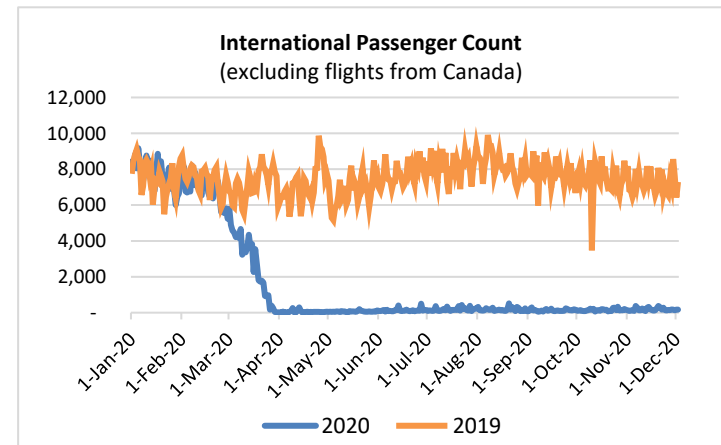
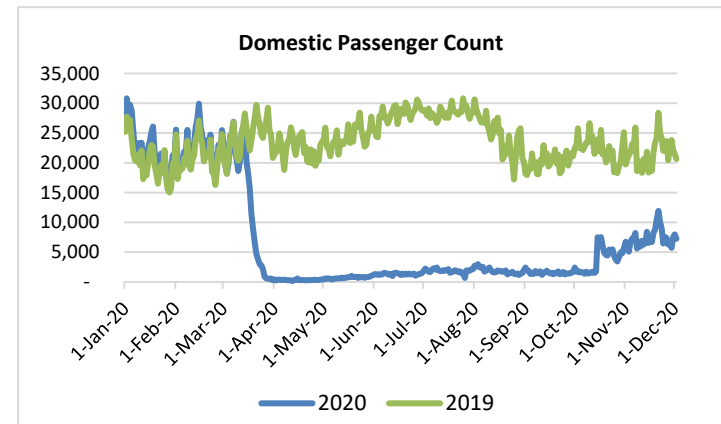
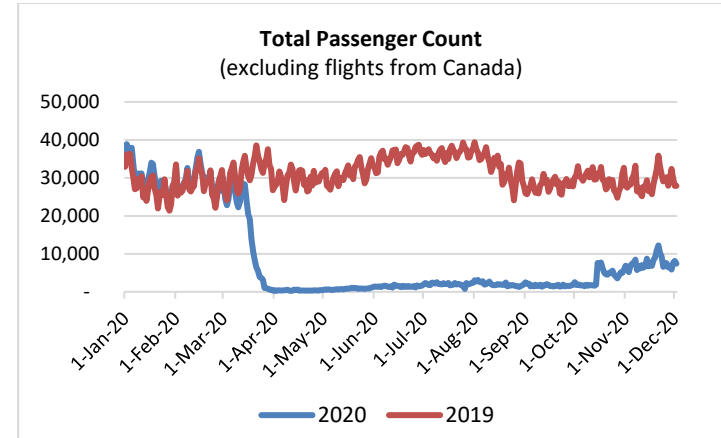


# HTA COVID-19 UPDATE

(Issued: 12/3/20 @ 4:00pm)

Reason for Trip by Arrival Airport - Transpacific Screened Passengers as of 12/02/20	Honolulu (HNL)	Kahului (OGG)	Kona (KOA)	Lihue (LIH)	Grand Total
Airline Crew	389	148	68	51	656
Connecting Flight (Transit)	238	7	0	1	246
Corporate Meeting	5	9	0	0	14
Essential Worker	136	29	13	1	179
Honeymoon	13	11	0	0	24
Incentive Trip	0	4	0	0	4
Intended Resident	106	40	32	2	180
Military or Federal Government	111	0	0	0	111
Other	64	29	11	3	107
Other Business	73	53	18	0	144
Pleasure/Vacation	1,483	1,595	605	7	3,690
Returning Resident	1,227	240	170	37	1,674
Sports Event	4	6	0	0	10
To Attend School	7	1	4	0	12
To Get Married	11	2	3	0	16
Transit	7	0	0	0	7
Visiting Friends or Relatives	758	242	146	8	1,154
<b>Grand Total</b>	<b>4,632</b>	<b>2,416</b>	<b>1,070</b>	<b>110</b>	<b>8,228</b>

**Source:** Safe Travels program developed by the State of Hawaii Office of Enterprise Technology Services  
**Note:** The data is preliminary and subject to change



## Daily Passenger Count Table

12/02/2020	Domestic	International	Total
Oahu	4109	170	4279
Maui	2148		2148
Island of Hawaii	936		936
Kauai	55		55
State	7248	170	7418

## Novel Coronavirus in Hawaii

### COVID-19 Positive Cases

Cumulative totals as of 12:00pm on December 3, 2020

Total Confirmed Cases	18,186* (144 new)
Hawaii	1,613
Kauai	116
Lanai	106
Maui	565†
Molokai	18
Oahu	15,540
Out of State	228
Pending	0
Required Hospitalization	1,315‡
Hawaii Deaths	246
Cases in the past 14 days	1,288**

### Footnotes for COVID-19 Cases

\*As a result of updated information, one HI resident diagnosed out of state and one case from Oahu were dropped from the counts.

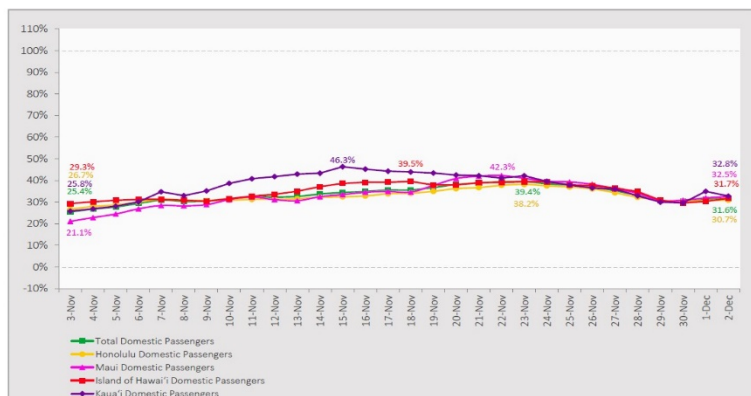
\*\*Using cases reported in the past 14 days provides a rough approximation of the number of cases currently meeting criteria for isolation. This proxy number for "active cases" resolves classification issues for cases unable to be reached or who are out of jurisdiction, for whom precise release from isolation date may not be possible to determine. It is also not influenced by lags in data entry. (This total does not include Hawaii residents diagnosed outside of Hawaii)

†One case is a Lanai resident whose exposure is on Maui Island and who will be remaining on Maui Island for the interim.

#Includes Hawaii residents hospitalized out of state.  
 §Includes cases that meet isolation release criteria (Isolation should be maintained until at least 24 hours after resolution of fever and myalgia without the use of antipyretics OR at least 10 days have passed since symptom onset, whichever is longer). (The cases that have died and one case that has left the jurisdiction have been removed from these counts). Positive cases include confirmed cases, and Hawaii residents and non-residents; data are preliminary and subject to change. Note that CDC provides case counts according to states of residence.

## 7-Day Domestic by Island Moving Average Daily Passenger Volume

2020 Volume as Percentage of 2019 Volume  
Through December 2, 2020



Source: HVCB analysis based on data from DBEDT  
Note: Passenger volume figures include both visitors and residents.

## Domestic by Island Month-to-Date and Year-to-Date Daily Passenger Volume

2020 Volume versus 2019 Volume  
Through December 2, 2020

December 2020 (Month-to-Date through December 2)

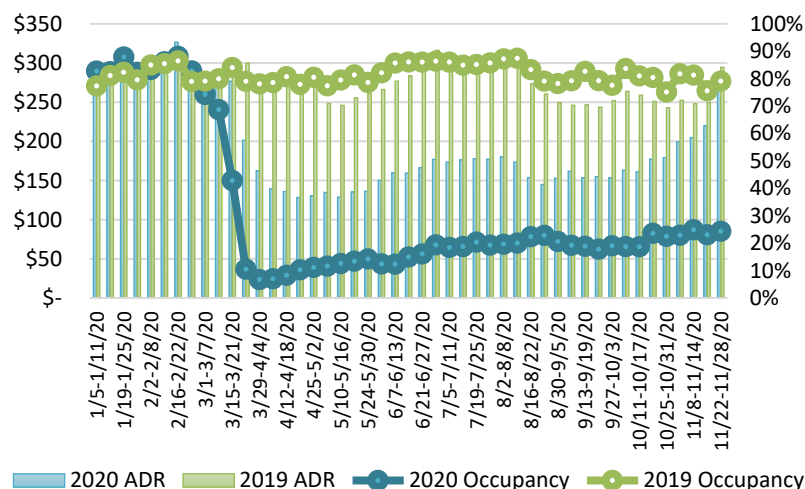
	2020	2019	Volume Change	Percent Change
Honolulu	8,217	26,023	-17,806	-68.4%
Maui County	4,171	11,230	-7,059	-62.9%
Island of Hawai'i	1,742	4,693	-2,951	-62.9%
Kaua'i	1,108	4,033	-2,925	-72.5%
<b>Total</b>	<b>15,237</b>	<b>45,979</b>	<b>-30,742</b>	<b>-66.9%</b>

2020 (Year-to-Date through December 2)

	2020	2019	Volume Change	Percent Change
Honolulu	1,364,935	4,238,387	-2,873,452	-67.8%
Maui County	537,931	2,056,831	-1,518,901	-73.8%
Island of Hawai'i	265,992	895,012	-629,020	-70.3%
Kaua'i	183,438	703,888	-520,450	-73.9%
<b>Total</b>	<b>2,352,295</b>	<b>7,894,118</b>	<b>-5,541,823</b>	<b>-70.2%</b>

Source: HVCB analysis based on data from DBEDT  
Note: Passenger volume figures include both visitors and residents. Total includes other international passengers. 2020 includes one additional day due to Leap Year (February 29th, 2020).

## State of Hawai'i Hotel Performance by Week - 2020 vs 2019



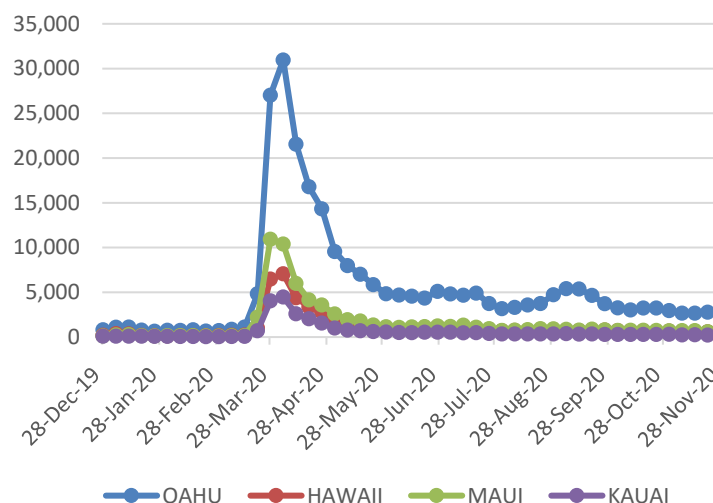
Source: STR, Inc. © Copyright 2020 Hawai'i Tourism Authority

## Hawaii Hotel Performance Info:

For the week of November 22 – November 28, 2020

	Occupancy	ADR	RevPAR
<b>State of Hawaii</b>	24.4%	\$ 275.04	\$ 67.10
<b>Oahu</b>	22.7%	\$ 177.47	\$ 40.28
<b>Maui County</b>	24.4%	\$ 475.52	\$ 116.07
<b>Kauai County</b>	33.0%	\$ 237.83	\$ 78.49
<b>Island of Hawaii</b>	25.7%	\$ 256.90	\$ 65.96

## 2020 Initial Weekly Unemployment Claims by Island



## Weekly Unemployment Initial Claims: November 28, 2020

<b>State of Hawaii</b>	3,566
<b>C&amp;C of Oahu</b>	2,323
<b>Hawaii County</b>	459
<b>Maui County</b>	436
<b>Kauai County</b>	233
<b>Agent (filed in Hawaii against another state)</b>	115

## News Highlights

December 3, 2020

**KHON2:** [Lack of interest in quarantine may be a barrier in contact tracing efforts](#)

**Honolulu Civil Beat:** [How Maui Dogs Are Learning How To Sniff Out Coronavirus Infections](#)

**The Garden Island:** [Protesting COVID restrictions](#)

**The Garden Island:** [Four new cases of COVID-19, three travel related](#)

**Big Island Now:** [Funding For Airport COVID Testing in Jeopardy; Mayor-Elect Details Possible Changes](#)

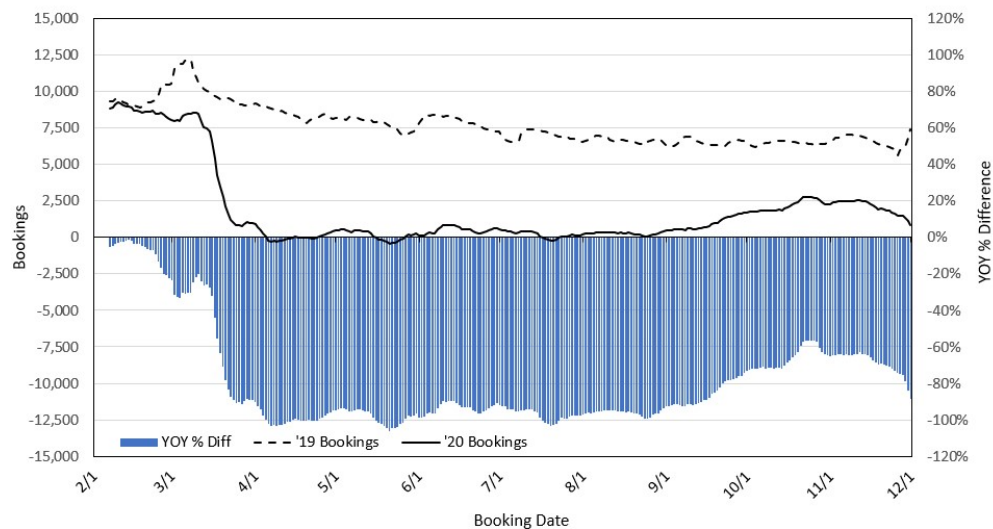
**Forbes:** [December U.S. Travel Restrictions By State—Christmas Quarantine And Covid-19 Test Requirements](#)

**TravelAge West:** [Vaccine Developments Are Leading to Travel Demand](#)

**AZ Central:** [Hawaii has updated its travel restrictions. What to know if you're flying from Phoenix](#)

**The Washington Post:** [A Hawaii couple knew they had coronavirus before flying. They boarded a flight anyway and were arrested, police say.](#)

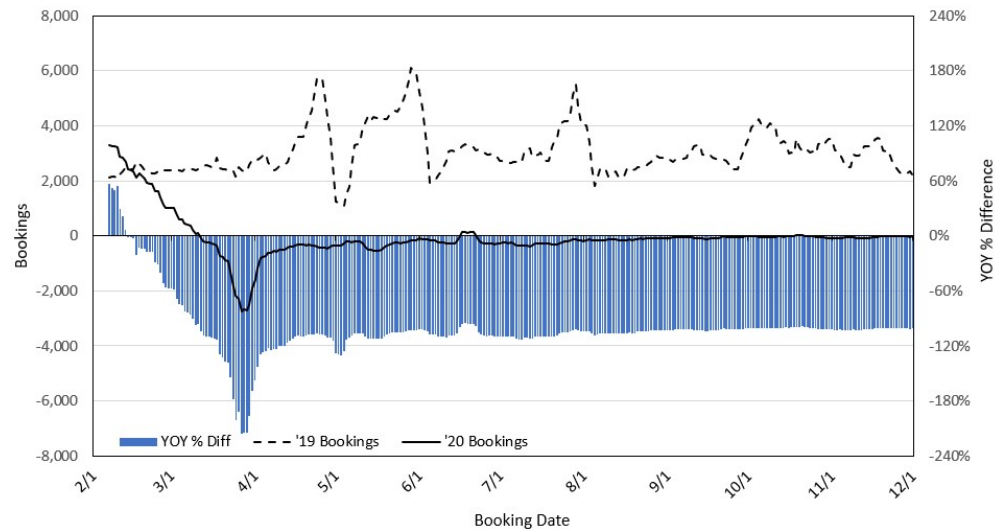
### Travel Agency Bookings to Hawaii for Future Arrivals\* Based on a 7-day Moving Average, 2020 vs 2019 U.S.



\*Future Arrivals refers to all arrivals that are 'future' relative to the referenced booking date.  
Source: Global Agency Pro

Update: Dec 1, 2020

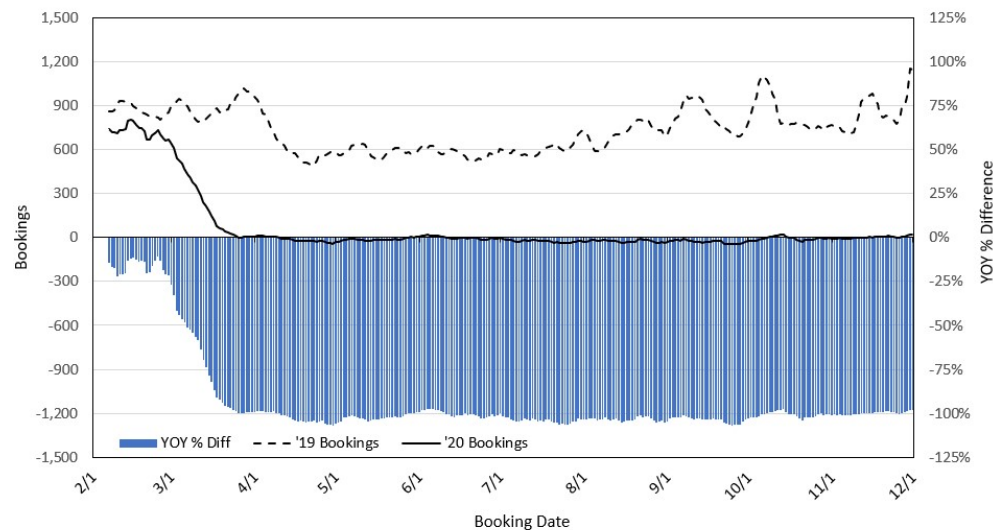
### Travel Agency Bookings to Hawaii for Future Arrivals\* Based on a 7-day Moving Average, 2020 vs 2019 Japan



\*Future Arrivals refers to all arrivals that are 'future' relative to the referenced booking date.  
Source: Global Agency Pro

Update: Dec 1, 2020

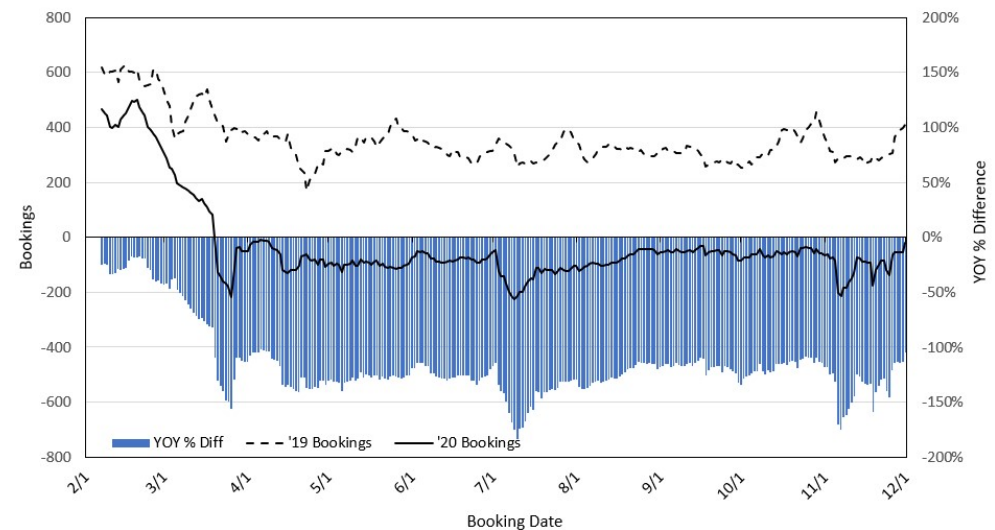
### Travel Agency Bookings to Hawaii for Future Arrivals\* Based on a 7-day Moving Average, 2020 vs 2019 Canada



\*Future Arrivals refers to all arrivals that are 'future' relative to the referenced booking date.  
Source: Global Agency Pro

Update: Dec 1, 2020

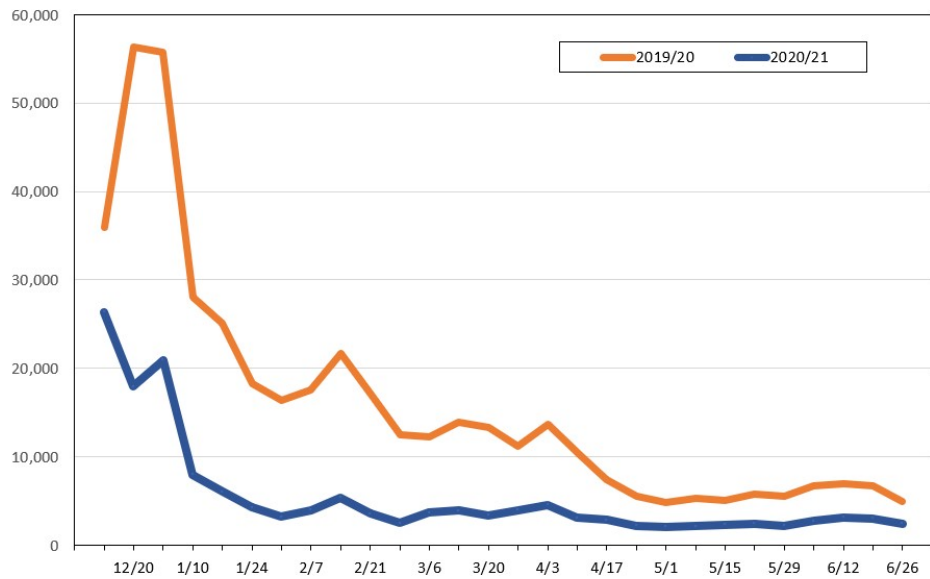
### Travel Agency Bookings to Hawaii for Future Arrivals\* Based on a 7-day Moving Average, 2020 vs 2019 Australia



\*Future Arrivals refers to all arrivals that are 'future' relative to the referenced booking date.  
Source: Global Agency Pro

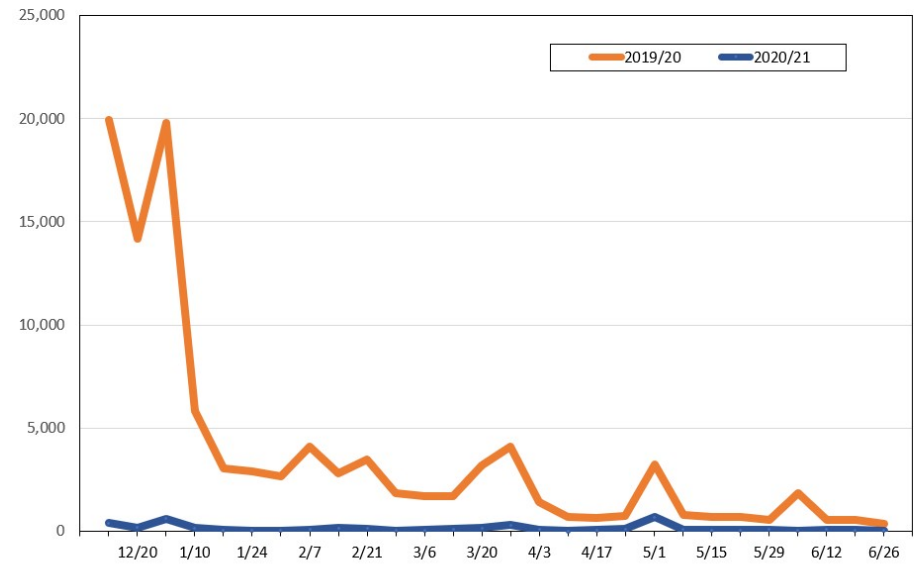
Update: Dec 1, 2020

**Travel Agency Weekly Bookings for Future Travel to Hawai'i as of December 1, 2020**  
U.S.



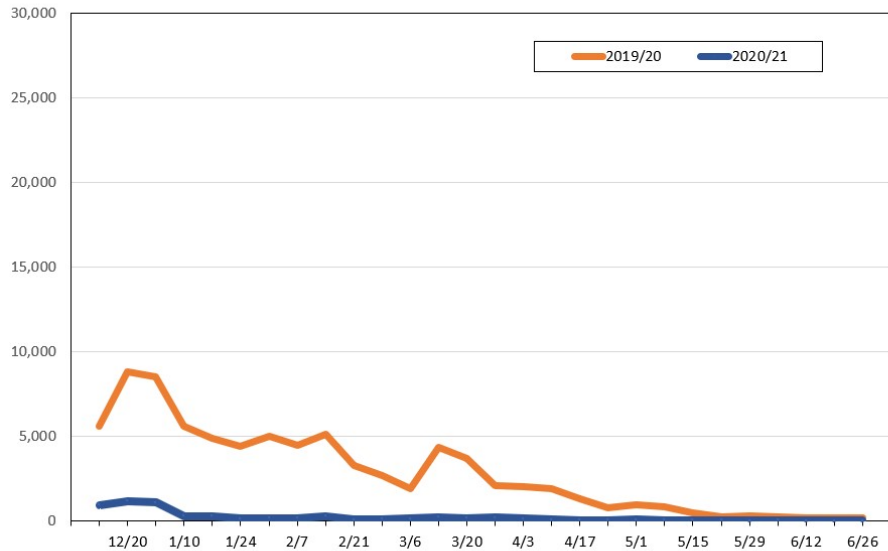
Source: Global Agency Pro, as of December 1, 2020

**Travel Agency Weekly Bookings for Future Travel to Hawai'i as of December 1, 2020**  
Japan



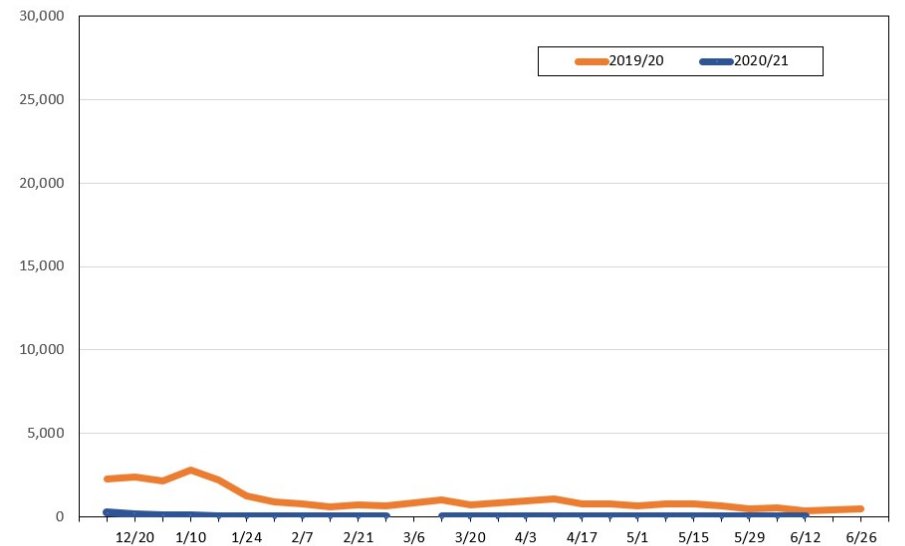
Source: Global Agency Pro, as of December 1, 2020

**Travel Agency Weekly Bookings for Future Travel to Hawai'i as of December 1, 2020**  
Canada



Source: Global Agency Pro, as of December 1, 2020

**Travel Agency Weekly Bookings for Future Travel to Hawai'i as of December 1, 2020**  
Australia



Source: Global Agency Pro, as of December 1, 2020