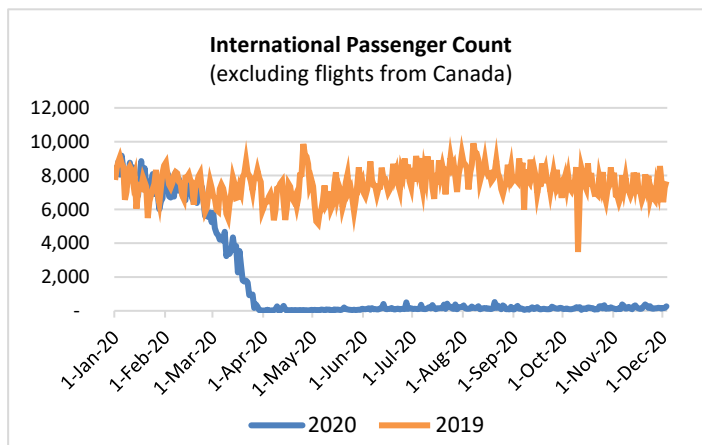
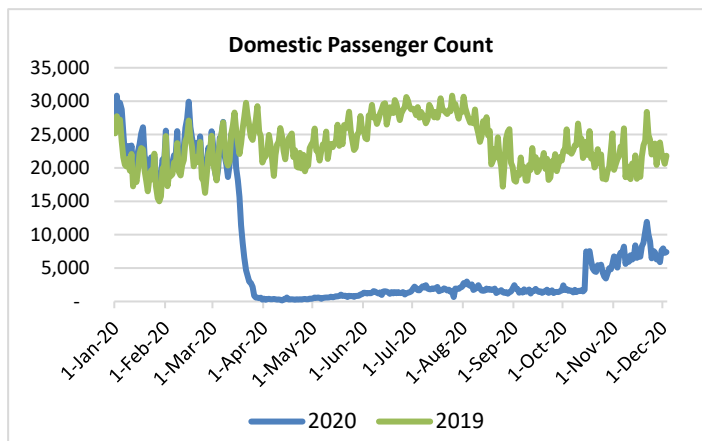
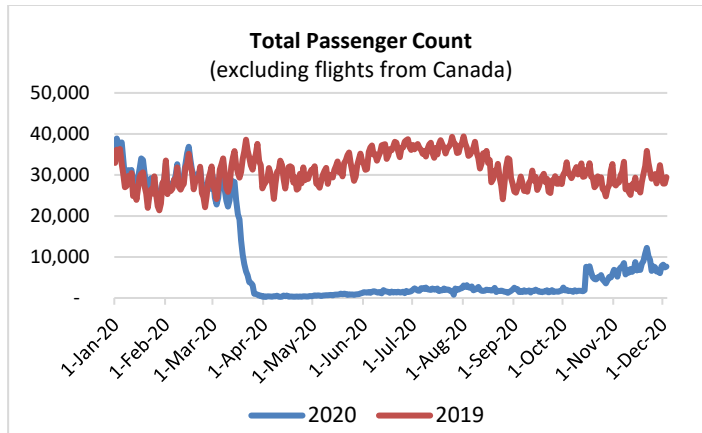


HTA COVID-19 UPDATE

(Issued: 12/4/20 @ 4:00pm)

Reason for Trip by Arrival Airport - Transpacific Screened Passengers as of 12/03/20	Honolulu (HNL)	Kahului (OGG)	Kona (KOA)	Lihue (LIH)	Grand Total
Airline Crew	410	149	67	37	663
Connecting Flight (Transit)	368	12	4	1	385
Corporate Meeting	3	4	2	0	9
Essential Worker	106	18	19	4	147
Honeymoon	10	5	0	0	15
Incentive Trip	5	2	0	0	7
Intended Resident	119	27	28	4	178
Military or Federal Government	103	2	0	5	110
Other	75	8	28	0	111
Other Business	63	32	22	1	118
Pleasure/Vacation	1,744	1,813	640	6	4,203
Returning Resident	1,034	190	164	20	1,408
Sports Event	110	1	0	0	111
To Attend School	18	0	0	0	18
To Get Married	7	5	4	0	16
Transit	4	0	0	0	4
Visiting Friends or Relatives	990	250	156	9	1,405
Grand Total	5,169	2,518	1,134	87	8,908

Source: Safe Travels program developed by the State of Hawaii Office of Enterprise Technology Services
Note: The data is preliminary and subject to change



Daily Passenger Count Table

12/03/2020	Domestic	International	Total
Oahu	4110	262	4372
Maui	2239		2239
Island of Hawaii	1010		1010
Kauai	47		47
State	7406	262	7418

Novel Coronavirus in Hawaii

COVID-19 Positive Cases

Cumulative totals as of 12:00pm on December 4, 2020

Total Confirmed Cases	18,290* (106 new)
Hawaii	1,623
Kauai	119
Lanai	106
Maui	579†
Molokai	18
Oahu	15,613
Out of State	232
Pending	0
Required Hospitalization	1,325‡
Hawaii Deaths	256
Cases in the past 14 days	1,300**

Footnotes for COVID-19 Cases

*As a result of updated information, one HI resident diagnosed out of state and one case from Oahu were dropped from the counts.

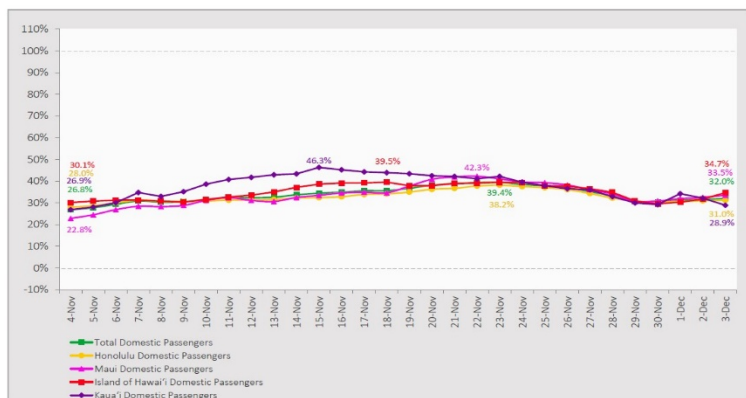
**Using cases reported in the past 14 days provides a rough approximation of the number of cases currently meeting criteria for isolation. This proxy number for "active cases" resolves classification issues for cases unable to be reached or who are out of jurisdiction, for whom precise release from isolation date may not be possible to determine. It is also not influenced by lags in data entry. (This total does not include Hawaii residents diagnosed outside of Hawaii)

†One case is a Lanai resident whose exposure is on Maui Island and who will be remaining on Maui Island for the interim.

#Includes Hawaii residents hospitalized out of state.
 §Includes cases that meet isolation release criteria (Isolation should be maintained until at least 24 hours after resolution of fever and myalgia without the use of antipyretics OR at least 10 days have passed since symptom onset, whichever is longer). (The cases that have died and one case that has left the jurisdiction have been removed from these counts). Positive cases include confirmed cases, and Hawaii residents and non-residents; data are preliminary and subject to change. Note that CDC provides case counts according to states of residence.

7-Day Domestic by Island Moving Average Daily Passenger Volume

2020 Volume as Percentage of 2019 Volume
Through December 3, 2020



Source: HVCB analysis based on data from DBEDT
Note: Passenger volume figures include both visitors and residents.

Domestic by Island Month-to-Date and Year-to-Date Daily Passenger Volume

2020 Volume versus 2019 Volume
Through December 3, 2020

December 2020 (Month-to-Date through December 3)

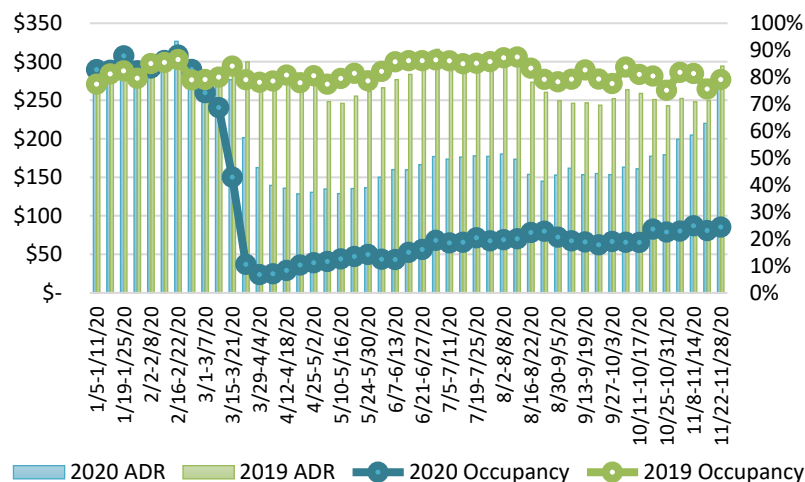
	2020	2019	Volume Change	Percent Change
Honolulu	12,327	38,367	-26,040	-67.9%
Maui County	6,410	16,743	-10,333	-61.7%
Island of Hawai'i	2,752	6,694	-3,942	-58.9%
Kaua'i	1,129	5,652	-4,523	-80.0%
Total	22,618	67,456	-44,838	-66.5%

2020 (Year-to-Date through December 3)

	2020	2019	Volume Change	Percent Change
Honolulu	1,369,045	4,250,731	-2,881,686	-67.8%
Maui County	540,170	2,062,344	-1,522,175	-73.8%
Island of Hawai'i	267,002	897,013	-630,011	-70.2%
Kaua'i	183,411	705,507	-522,096	-74.0%
Total	2,359,627	7,915,595	-5,555,968	-70.2%

Source: HVCB analysis based on data from DBEDT
Note: Passenger volume figures include both visitors and residents. Total includes other international passengers. 2020 includes one additional day due to Leap Year (February 29th, 2020).

State of Hawai'i Hotel Performance by Week - 2020 vs 2019



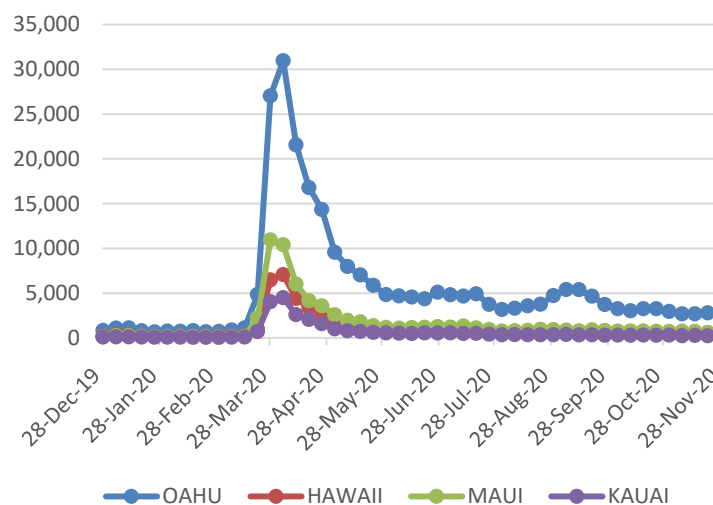
Source: STR, Inc. © Copyright 2020 Hawai'i Tourism Authority

Hawaii Hotel Performance Info:

For the week of November 22 – November 28, 2020

	Occupancy	ADR	RevPAR
State of Hawaii	24.4%	\$ 275.04	\$ 67.10
Oahu	22.7%	\$ 177.47	\$ 40.28
Maui County	24.4%	\$ 475.52	\$ 116.07
Kauai County	33.0%	\$ 237.83	\$ 78.49
Island of Hawaii	25.7%	\$ 256.90	\$ 65.96

2020 Initial Weekly Unemployment Claims by Island



Weekly Unemployment Initial Claims: November 28, 2020

State of Hawaii	3,566
C&C of Oahu	2,323
Hawaii County	459
Maui County	436
Kauai County	233
Agent (filed in Hawaii against another state)	115

News Highlights

December 4, 2020

KITV4: [50 Honolulu Police officers have tested positive for COVID-19 since start of pandemic](#)

KHON2: [COVID spike in Oahu prison adds another obstacle to loosening restrictions](#)

Honolulu Civil Beat: [Modifying Safe Travels Program Could Allay Health, Economic Fears](#)

Hawaii Tribune-Herald: [States plan for vaccines as daily US virus deaths top 3,100](#)

Travel Pulse: [Delta to Become First Airline With International COVID-19 Contact Tracing Program](#)

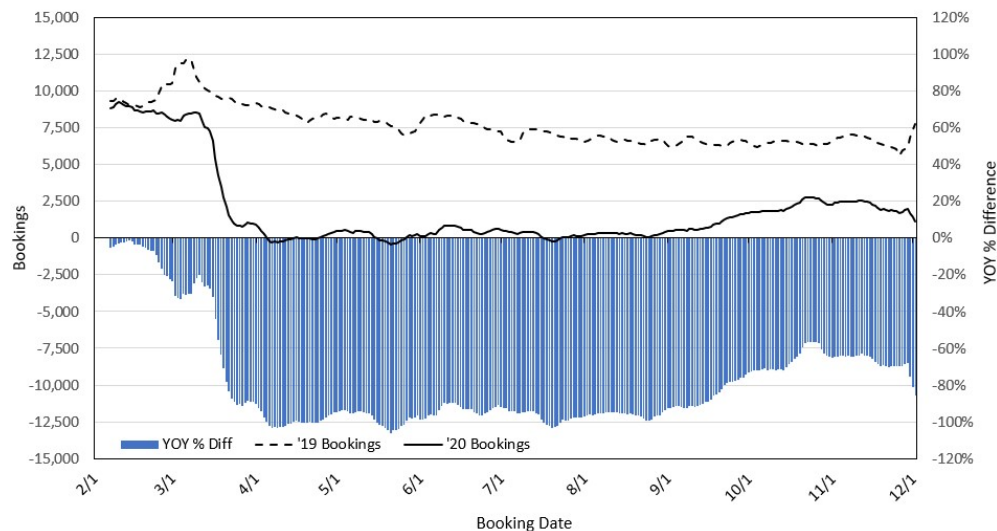
Travel Pulse: [Aloha Canada 2020 Virtual Hawaii Tourism Show: A Definite Success](#)

Travel Pulse: [US Travel Predicts Turnaround in Second Quarter of 2021](#)

Travel Awaits: [From Lockdown Comes Life: Beloved Hawaiian Tourist Spot Sees Wildlife Return](#)

Timeout: [Hawaii will pay for your round-trip ticket if you decide to temporarily relocate to Honolulu](#)

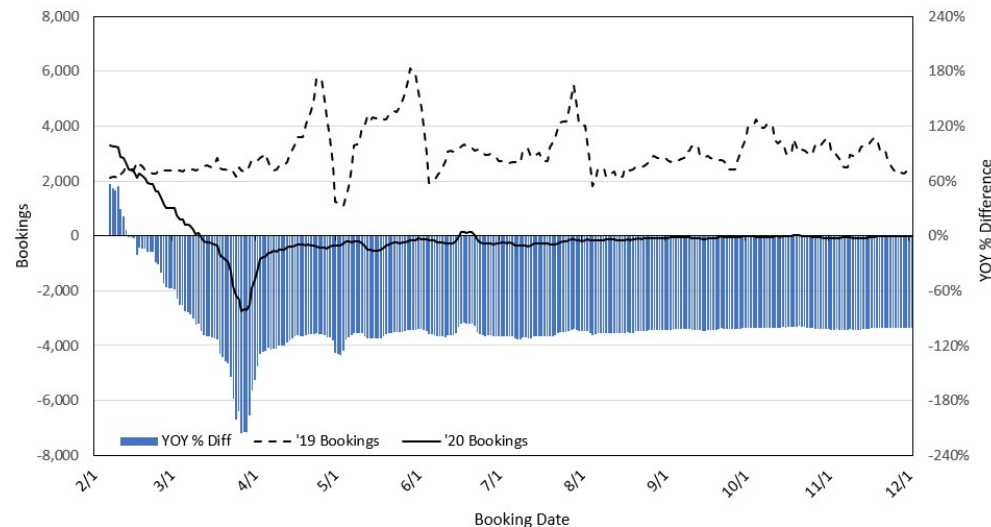
Travel Agency Bookings to Hawaii for Future Arrivals* Based on a 7-day Moving Average, 2020 vs 2019 U.S.



*Future Arrivals refers to all arrivals that are 'future' relative to the referenced booking date.
Source: Global Agency Pro

Update: Dec 2, 2020

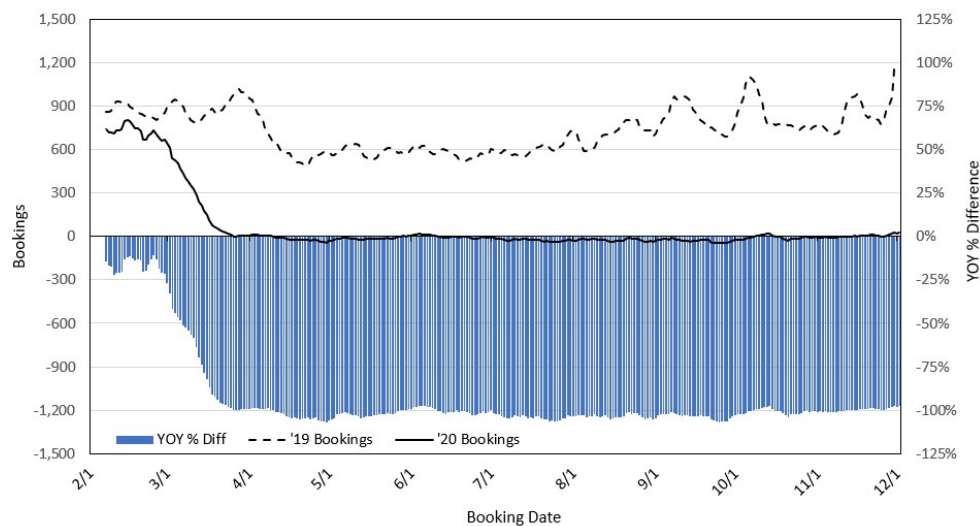
Travel Agency Bookings to Hawaii for Future Arrivals* Based on a 7-day Moving Average, 2020 vs 2019 Japan



*Future Arrivals refers to all arrivals that are 'future' relative to the referenced booking date.
Source: Global Agency Pro

Update: Dec 2, 2020

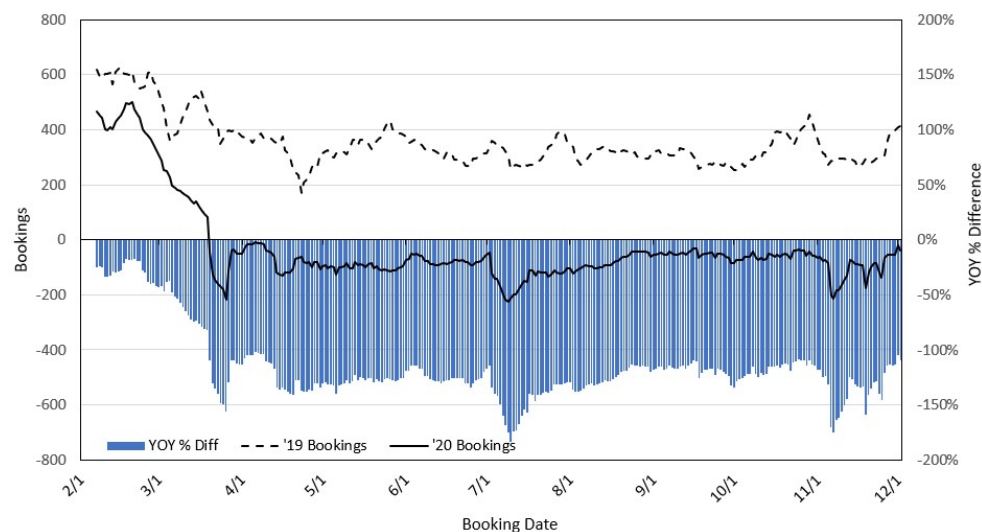
Travel Agency Bookings to Hawaii for Future Arrivals* Based on a 7-day Moving Average, 2020 vs 2019 Canada



*Future Arrivals refers to all arrivals that are 'future' relative to the referenced booking date.
Source: Global Agency Pro

Update: Dec 2, 2020

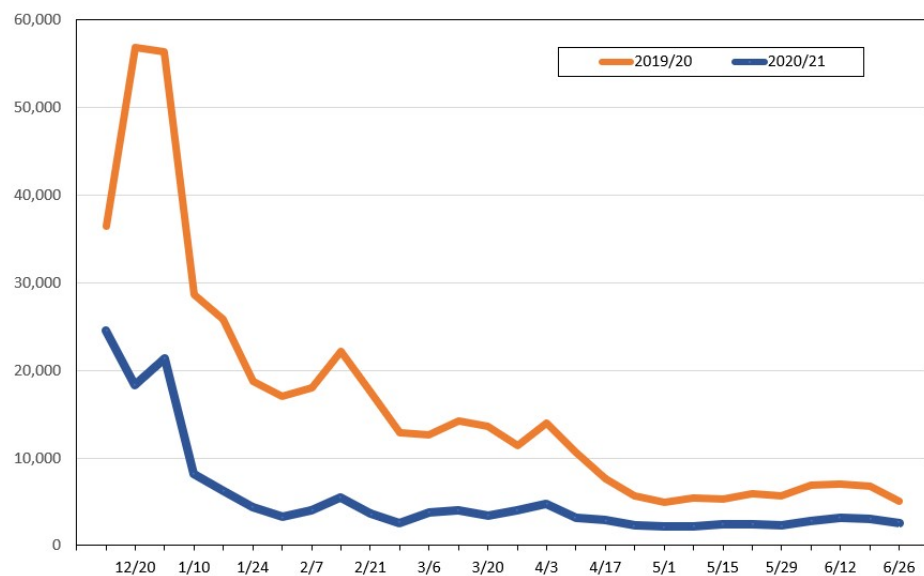
Travel Agency Bookings to Hawaii for Future Arrivals* Based on a 7-day Moving Average, 2020 vs 2019 Australia



*Future Arrivals refers to all arrivals that are 'future' relative to the referenced booking date.
Source: Global Agency Pro

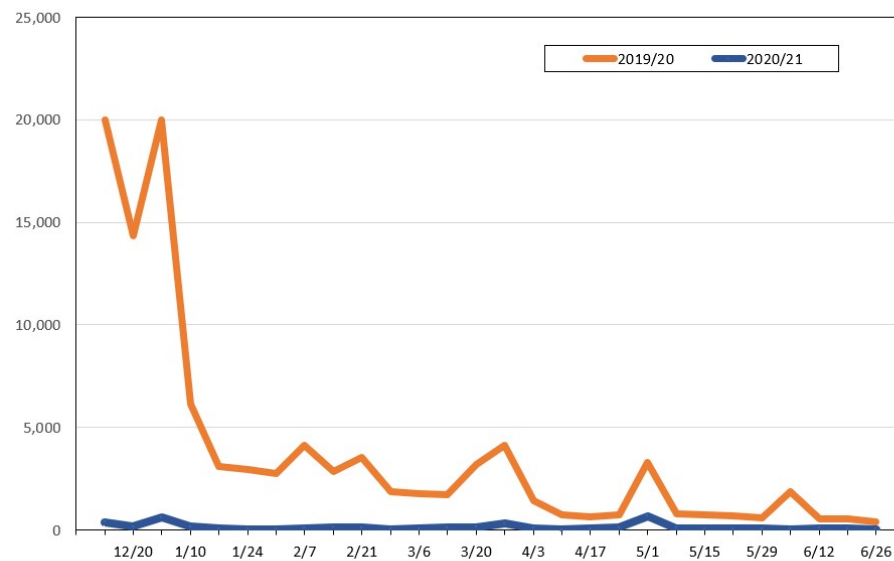
Update: Dec 2, 2020

Travel Agency Weekly Bookings for Future Travel to Hawai'i as of December 2, 2020
U.S.



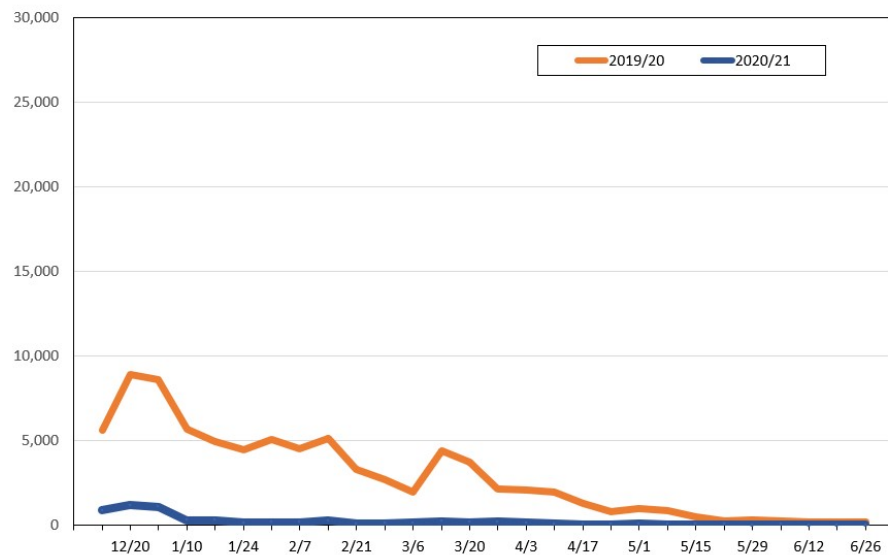
Source: Global Agency Pro, as of December 2, 2020

Travel Agency Weekly Bookings for Future Travel to Hawai'i as of December 2, 2020
Japan



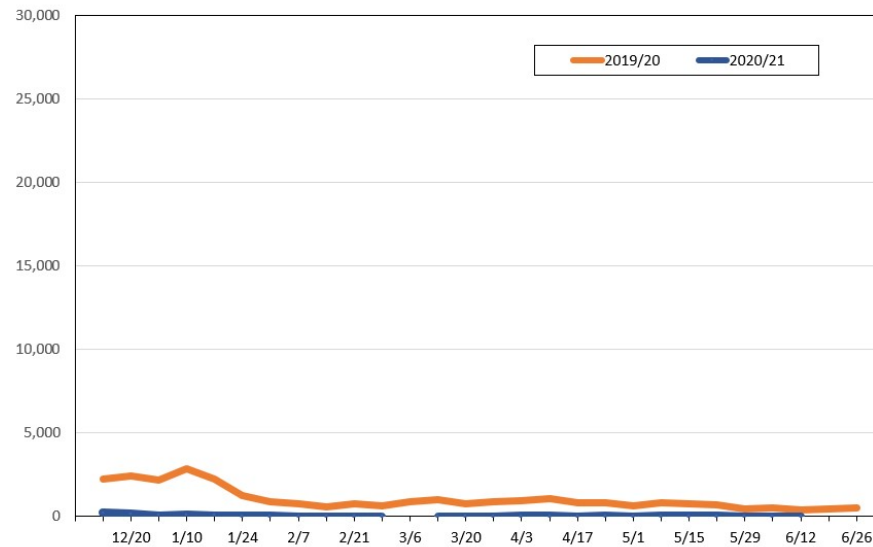
Source: Global Agency Pro, as of December 2, 2020

Travel Agency Weekly Bookings for Future Travel to Hawai'i as of December 2, 2020
Canada



Source: Global Agency Pro, as of December 2, 2020

Travel Agency Weekly Bookings for Future Travel to Hawai'i as of December 2, 2020
Australia



Source: Global Agency Pro, as of December 2, 2020