

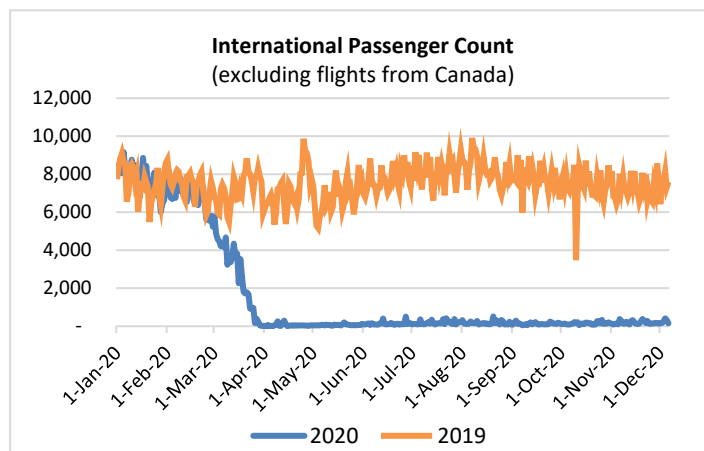
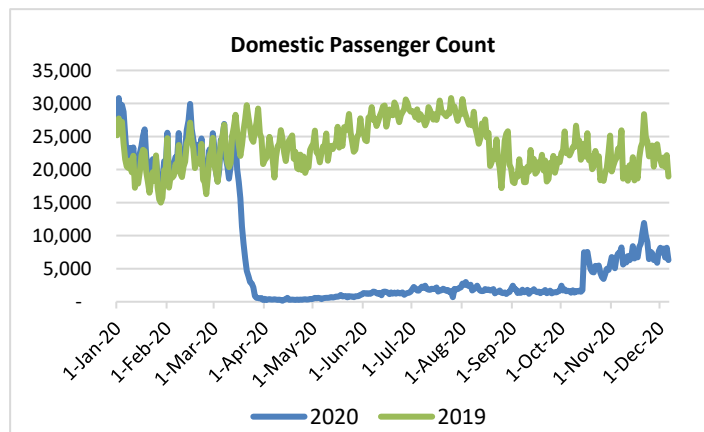
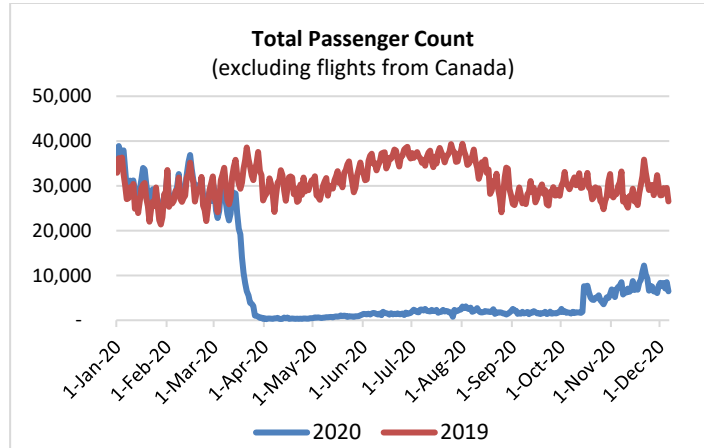
HTA COVID-19 UPDATE

(Issued: 12/7/20 @ 4:30pm)

Reason for Trip by Arrival Airport - Transpacific Screened Passengers as of 12/06/20	Honolulu (HNL)	Kahului (OGG)	Kona (KOA)	Lihue (LIH)	Grand Total
Airline Crew	337	154	85	30	606
Connecting Flight (Transit)	250	15	5	0	270
Corporate Meeting	5	2	7	0	14
Essential Worker	233	26	19	6	284
Honeymoon	18	10	7	0	35
Intended Resident	60	14	31	11	116
Military or Federal Government	122	0	6	0	128
Other	45	15	17	0	77
Other Business	93	40	35	2	170
Pleasure/Vacation	1,025	1,411	676	10	3,122
Returning Resident	1,087	170	169	39	1,465
Sports Event	6	0	0	0	6
To Attend School	2	0	0	0	2
To Get Married	4	0	0	0	4
Transit	2	0	0	0	2
Visiting Friends or Relatives	511	130	104	9	754
Grand Total	3,800	1,987	1,161	107	7,055

Source: Safe Travels program developed by the State of Hawaii Office of Enterprise Technology Services

Note: The data is preliminary and subject to change



Daily Passenger Count Table

12/06/2020	Domestic	International	Total
Oahu	3501	152	3653
Maui	1727		1727
Island of Hawaii	996		996
Kauai	73		73
State	6297	152	6449

Novel Coronavirus in Hawaii

COVID-19 Positive Cases

Cumulative totals as of 12:00pm on December 7, 2020

Total Confirmed Cases	18,608* (81 new)
Hawaii	1,647
Kauai	120
Lanai	106
Maui	612†
Molokai	19
Oahu	15,840
Out of State	264
Pending	0
Required Hospitalization	1,329‡
Hawaii Deaths	262
Cases in the past 14 days	1,210**

Footnotes for COVID-19 Cases

*As a result of updated information, one HI resident diagnosed out of state and one case from Oahu were dropped from the counts.

**Using cases reported in the past 14 days provides a rough approximation of the number of cases currently meeting criteria for isolation. This proxy number for "active cases" resolves classification issues for cases unable to be reached or who are out of jurisdiction, for whom precise release from isolation date may not be possible to determine. It is also not influenced by lags in data entry. (This total does not include Hawaii residents diagnosed outside of Hawaii)

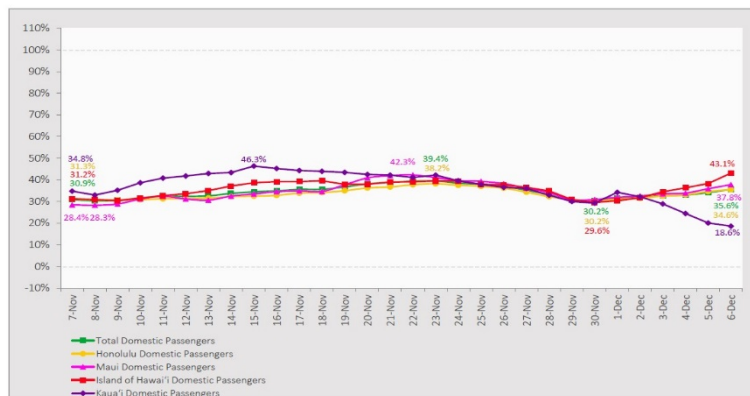
†One case is a Lanai resident whose exposure is on Maui Island and who will be remaining on Maui Island for the interim.

#Includes Hawaii residents hospitalized out of state.
§Includes cases that meet isolation release criteria (Isolation should be maintained until at least 24 hours after resolution of fever and myalgia without the use of antipyretics OR at least 10 days have passed since symptom onset, whichever is longer). (The cases that have died and one case that has left the jurisdiction have been removed from these counts). Positive cases include confirmed cases, and Hawaii residents and non-residents; data are preliminary and subject to change. Note that CDC provides case counts according to states of residence.

7-Day Domestic by Island Moving Average Daily Passenger Volume

2020 Volume as Percentage of 2019 Volume

Through December 6, 2020



Source: HVCB analysis based on data from DBEDT
Note: Passenger volume figures include both visitors and residents.

Domestic by Island Month-to-Date and Year-to-Date Daily Passenger Volume

2020 Volume versus 2019 Volume

Through December 6, 2020

December 2020 (Month-to-Date through December 6)

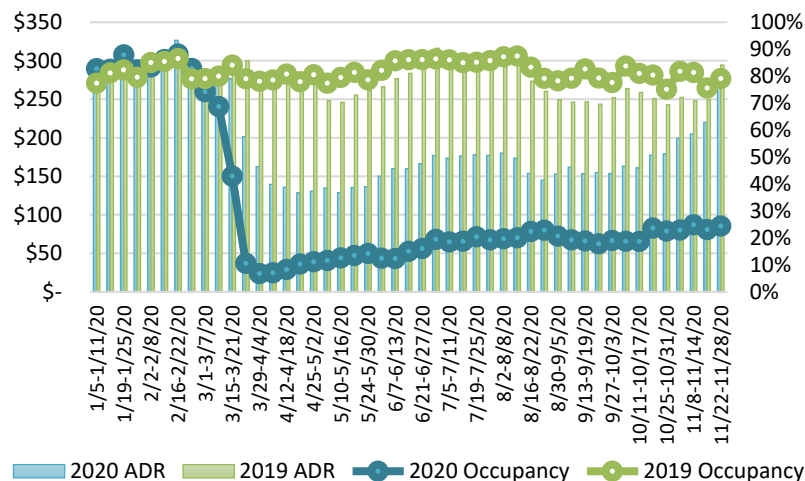
	2020	2019	Volume Change	Percent Change
Honolulu	24,639	73,616	-48,977	-66.5%
Maui County	12,962	33,458	-20,496	-61.3%
Island of Hawai'i	5,901	13,088	-7,187	-54.9%
Kaua'i	1,350	10,137	-8,787	-86.7%
Total	44,852	130,299	-85,447	-65.6%

2020 (Year-to-Date through December 6)

	2020	2019	Volume Change	Percent Change
Honolulu	1,381,357	4,285,980	-2,904,623	-67.8%
Maui County	546,722	2,079,059	-1,532,337	-73.7%
Island of Hawai'i	270,151	903,407	-633,256	-70.1%
Kaua'i	183,632	709,992	-526,360	-74.1%
Total	2,381,861	7,978,438	-5,596,577	-70.1%

Source: HVCB analysis based on data from DBEDT
Note: Passenger volume figures include both visitors and residents. Total includes other international passengers. 2020 includes one additional day due to Leap Year (February 29th, 2020).

State of Hawai'i Hotel Performance by Week - 2020 vs 2019



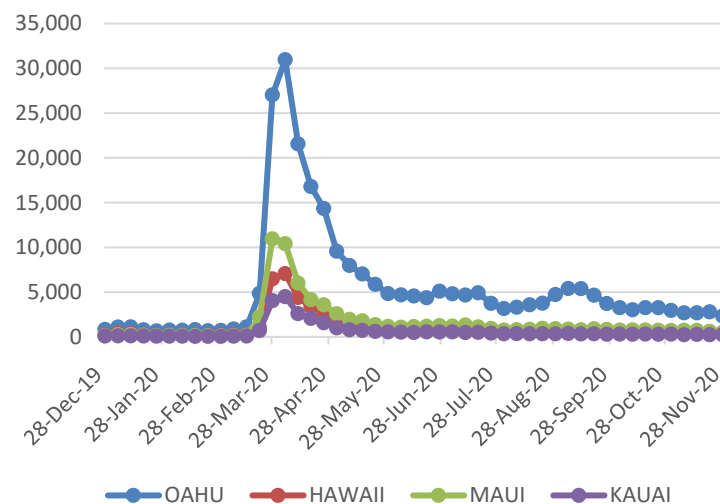
Source: STR, Inc. © Copyright 2020 Hawai'i Tourism Authority

Hawaii Hotel Performance Info:

For the week of November 22 – November 28, 2020

	Occupancy	ADR	RevPAR
State of Hawaii	24.4%	\$ 275.04	\$ 67.10
Oahu	22.7%	\$ 177.47	\$ 40.28
Maui County	24.4%	\$ 475.52	\$ 116.07
Kauai County	33.0%	\$ 237.83	\$ 78.49
Island of Hawaii	25.7%	\$ 256.90	\$ 65.96

2020 Initial Weekly Unemployment Claims by Island



Weekly Unemployment Initial Claims: November 28, 2020

State of Hawaii	3,566
C&C of Oahu	2,323
Hawaii County	459
Maui County	436
Kauai County	233
Agent (filed in Hawaii against another state)	115

News Highlights

December 7, 2020

Hawaii Tribune-Herald: [Will the U.S. ever have a national COVID-19 testing strategy?](#)

West Hawaii Today: [Despite promise, few in U.S. adopting COVID-19 exposure apps](#)

Big Island Now: [Hawaii Orders First Batch of COVID-19 Vaccine](#)

The Garden Island: [One new case of COVID-19 on Sunday](#)

The Maui News: [Quarantine breaker returns to Colorado](#)

Travel Pulse: [New Study Reveals Impact of COVID-19 on Tourism Industry](#)

Travel Weekly: [Expecting slow vaccine rollout, airlines keep pushing for tests](#)

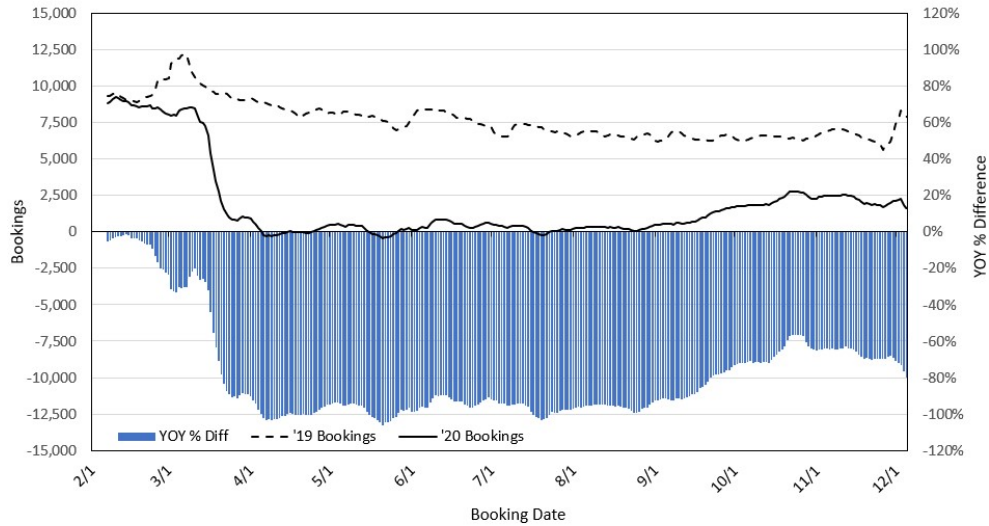
Travel Weekly: [Hawaii reaches out to 'mindful travelers'](#)

Travel Week: [Kauai still requiring quarantine & more need-to-knows from Hawaii](#)

Fox News: [More than 1,900 shipping containers lost near Hawaii, some containing 'dangerous goods'](#)

Travel Weekly: [Hawaii 'workation' program has long-term aspirations, as well](#)

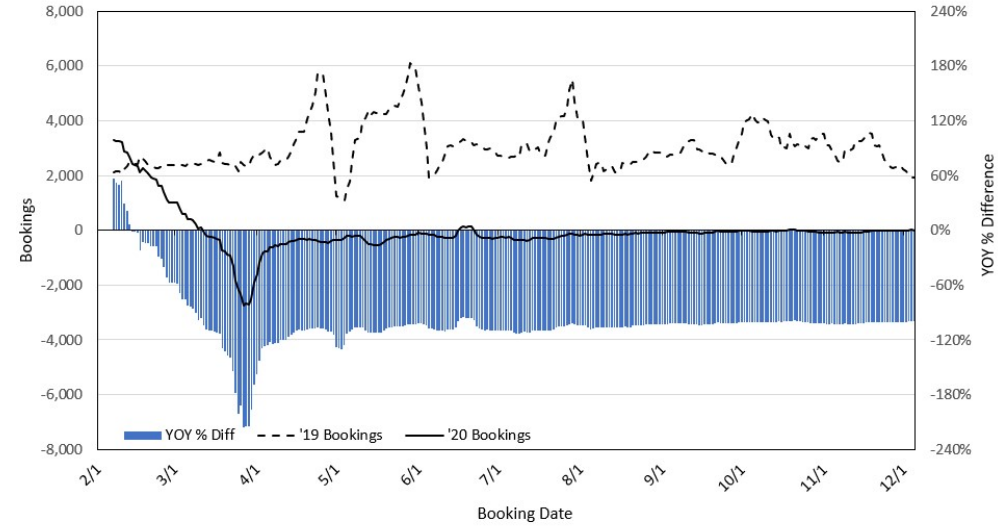
Travel Agency Bookings to Hawaii for Future Arrivals* Based on a 7-day Moving Average, 2020 vs 2019 U.S.



*Future Arrivals refers to all arrivals that are 'future' relative to the referenced booking date.
Source: Global Agency Pro

Update: Dec 5, 2020

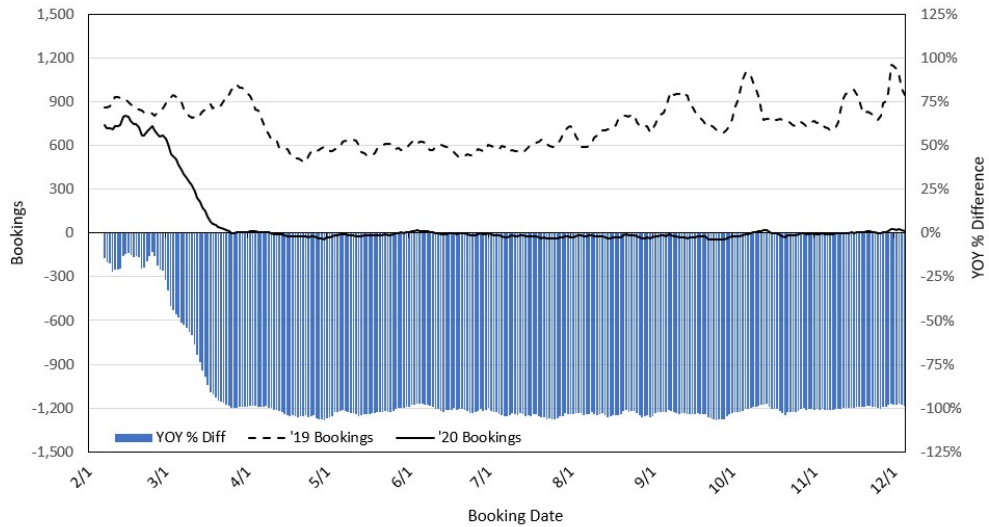
Travel Agency Bookings to Hawaii for Future Arrivals* Based on a 7-day Moving Average, 2020 vs 2019 Japan



*Future Arrivals refers to all arrivals that are 'future' relative to the referenced booking date.
Source: Global Agency Pro

Update: Dec 5, 2020

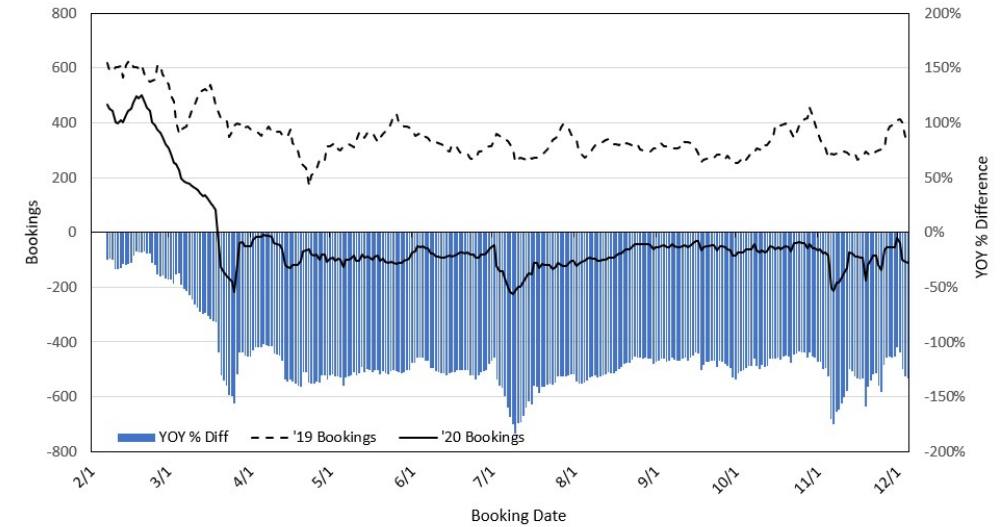
Travel Agency Bookings to Hawaii for Future Arrivals* Based on a 7-day Moving Average, 2020 vs 2019 Canada



*Future Arrivals refers to all arrivals that are 'future' relative to the referenced booking date.
Source: Global Agency Pro

Update: Dec 5, 2020

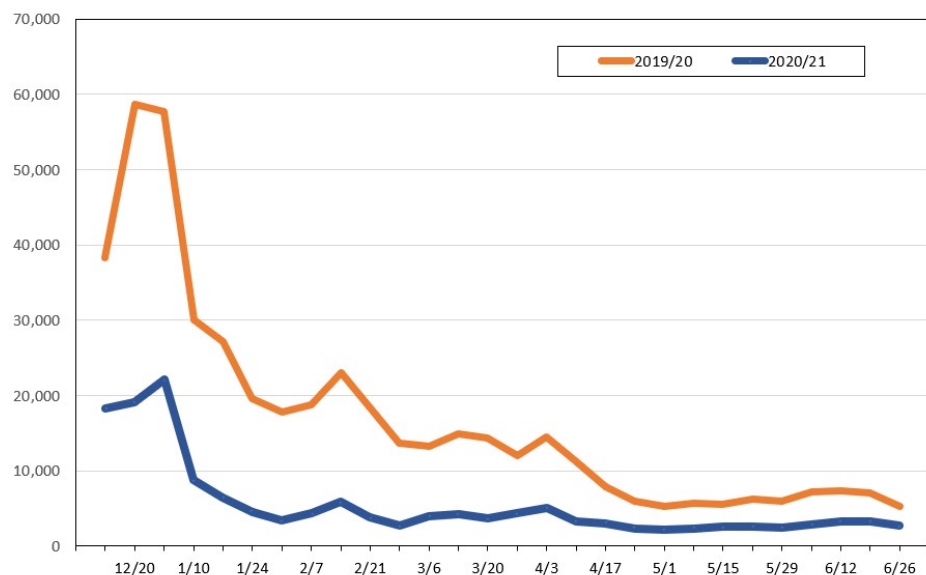
Travel Agency Bookings to Hawaii for Future Arrivals* Based on a 7-day Moving Average, 2020 vs 2019 Australia



*Future Arrivals refers to all arrivals that are 'future' relative to the referenced booking date.
Source: Global Agency Pro

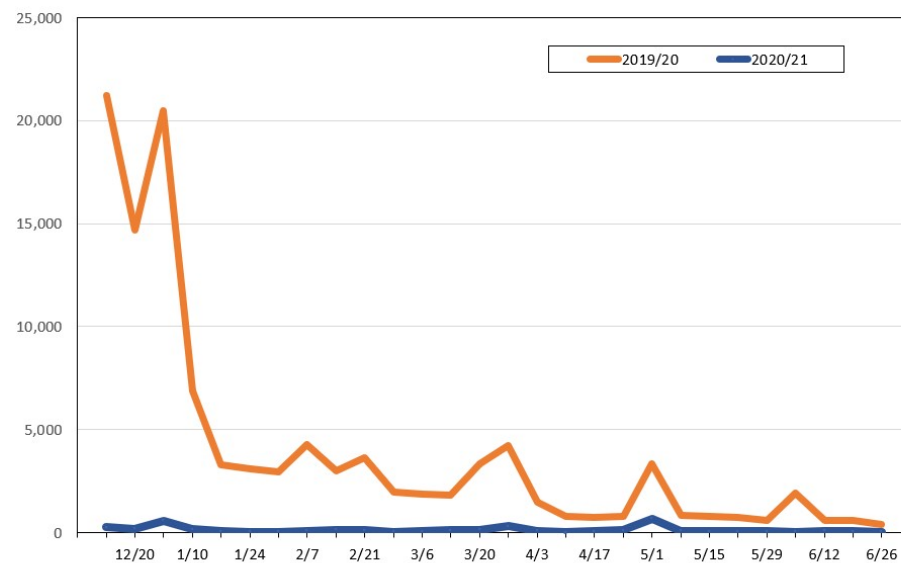
Update: Dec 5, 2020

Travel Agency Weekly Bookings for Future Travel to Hawai'i as of December 5, 2020
U.S.



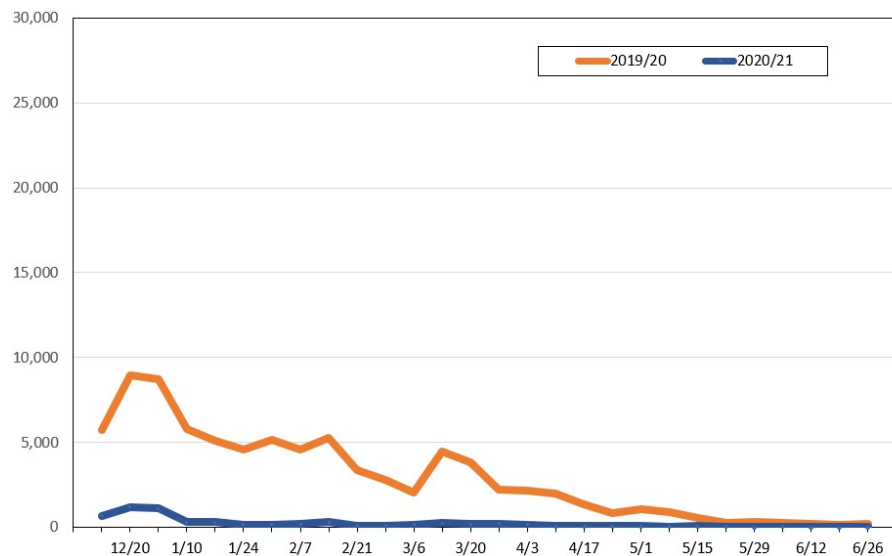
Source: Global Agency Pro, as of December 5, 2020

Travel Agency Weekly Bookings for Future Travel to Hawai'i as of December 5, 2020
Japan



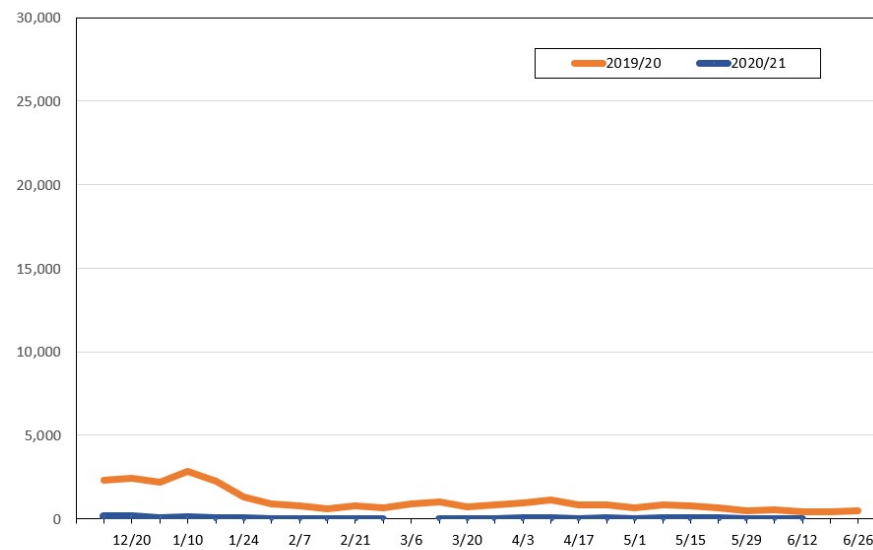
Source: Global Agency Pro, as of December 5, 2020

Travel Agency Weekly Bookings for Future Travel to Hawai'i as of December 5, 2020
Canada



Source: Global Agency Pro, as of December 5, 2020

Travel Agency Weekly Bookings for Future Travel to Hawai'i as of December 5, 2020
Australia



Source: Global Agency Pro, as of December 5, 2020