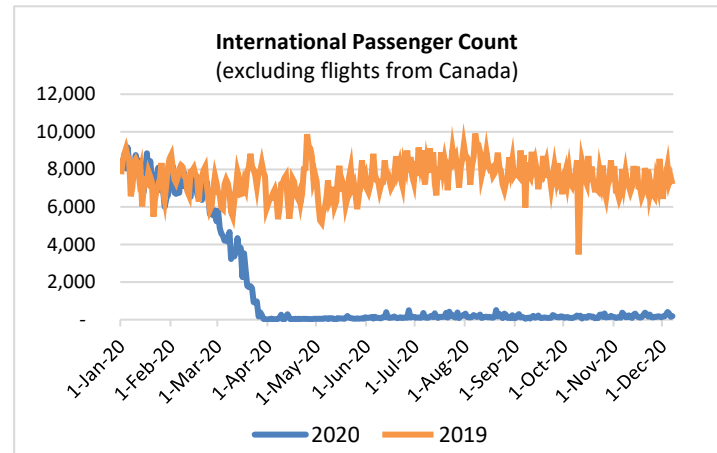
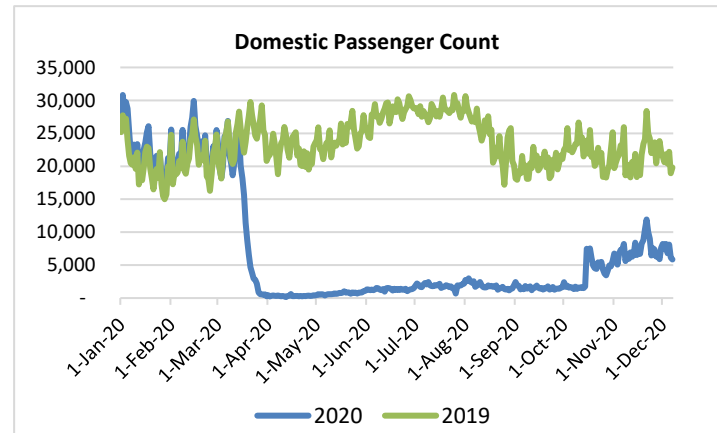
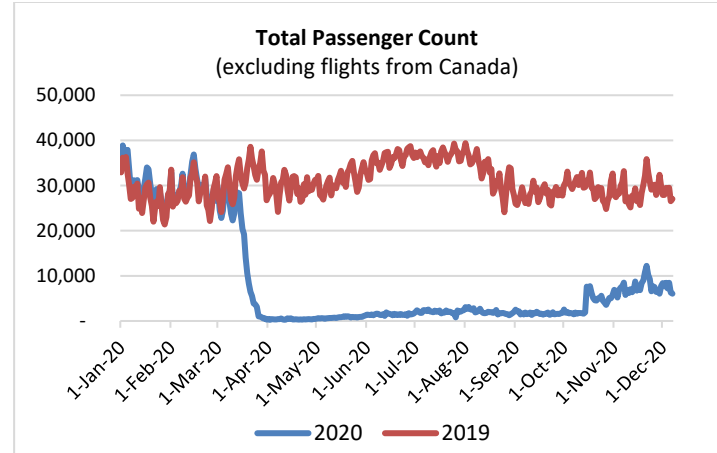


# HTA COVID-19 UPDATE

(Issued: 12/8/20 @ 4:30pm)

Reason for Trip by Arrival Airport - Transpacific Screened Passengers as of 12/07/20	Honolulu (HNL)	Kahului (OGG)	Kona (KOA)	Lihue (LIH)	Grand Total
Airline Crew	363	142	87	37	629
Connecting Flight (Transit)	279	3	2	0	284
Corporate Meeting	7	0	1	0	8
Essential Worker	126	28	17	16	187
Honeymoon	6	12	1	0	19
Incentive Trip	2	0	0	0	2
Intended Resident	84	34	32	12	162
Military or Federal Government	89	0	1	0	90
Other	70	27	9	4	110
Other Business	79	22	20	1	122
Pleasure/Vacation	1,031	1,099	414	6	2,550
Returning Resident	1,107	159	123	57	1,446
Sports Event	6	0	0	0	6
To Attend School	0	0	1	0	1
To Get Married	4	2	2	0	8
Visiting Friends or Relatives	755	179	127	10	1,071
<b>Grand Total</b>	<b>4,008</b>	<b>1,707</b>	<b>837</b>	<b>143</b>	<b>6,695</b>

**Source:** Safe Travels program developed by the State of Hawaii Office of Enterprise Technology Services  
**Note:** The data is preliminary and subject to change



**Daily Passenger Count Table**

12/07/2020	Domestic	International	Total
Oahu	3564	188	3752
Maui	1485		1485
Island of Hawaii	699		699
Kauai	101		101
State	5849	188	6037

## Novel Coronavirus in Hawaii

### COVID-19 Positive Cases

Cumulative totals as of 12:00pm on December 8, 2020

Total Confirmed Cases	18,661* (53 new)
Hawaii	1,652
Kauai	120
Lanai	106
Maui	618†
Molokai	22
Oahu	15,879
Out of State	264
Pending	0
Required Hospitalization	1,329‡
Hawaii Deaths	262
Cases in the past 14 days	1,207**

### Footnotes for COVID-19 Cases

**\*\*Using cases reported in the past 14 days provides a rough approximation of the number of cases currently meeting criteria for isolation. This proxy number for "active cases" resolves classification issues for cases unable to be reached or who are out of jurisdiction, for whom precise release from isolation date may not be possible to determine. It is also not influenced by lags in data entry. (This total does not include Hawaii residents diagnosed outside of Hawaii)**

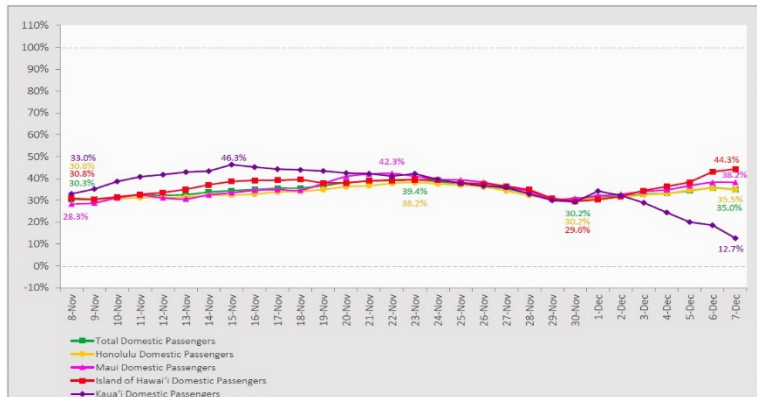
**†One case is a Lanai resident whose exposure is on Maui Island and who will be remaining on Maui Island for the interim.**

**#Includes Hawaii residents hospitalized out of state.**

**§Includes cases that meet isolation release criteria (Isolation should be maintained until at least 24 hours after resolution of fever and myalgia without the use of antipyretics OR at least 10 days have passed since symptom onset, whichever is longer). (The cases that have died and one case that has left the jurisdiction have been removed from these counts). Positive cases include confirmed cases, and Hawaii residents and non-residents; data are preliminary and subject to change. Note that CDC provides case counts according to states of residence.**

## 7-Day Domestic by Island Moving Average Daily Passenger Volume

2020 Volume as Percentage of 2019 Volume  
Through December 7, 2020



Source: HVCB analysis based on data from DBEDT  
Note: Passenger volume figures include both visitors and residents.

## Domestic by Island Month-to-Date and Year-to-Date Daily Passenger Volume

2020 Volume versus 2019 Volume  
Through December 7, 2020

December 2020 (Month-to-Date through December 7)

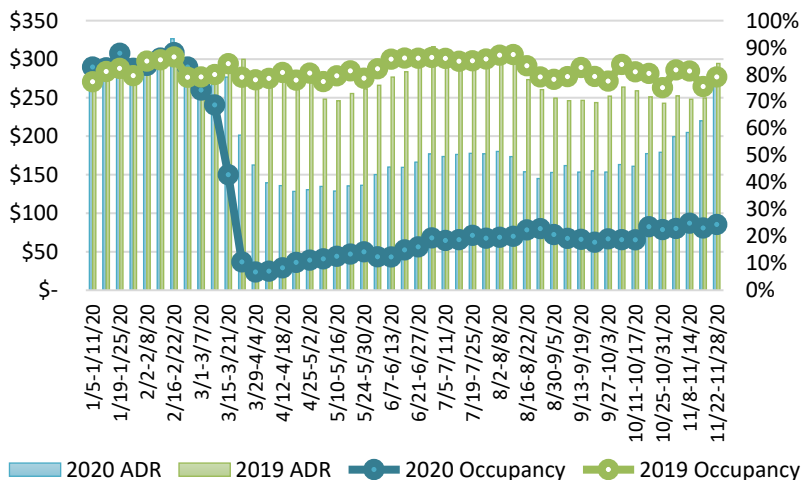
	2020	2019	Volume Change	Percent Change
Honolulu	28,203	84,784	-56,581	-66.7%
Maui County	14,619	39,646	-25,027	-63.1%
Island of Hawai'i	6,600	15,745	-9,145	-58.1%
Kaua'i	1,451	12,322	-10,871	-88.2%
Total	50,873	152,497	-101,624	-66.6%

2020 (Year-to-Date through December 7)

	2020	2019	Volume Change	Percent Change
Honolulu	1,384,921	4,297,148	-2,912,227	-67.8%
Maui County	548,379	2,085,247	-1,536,868	-73.7%
Island of Hawai'i	270,850	906,064	-635,214	-70.1%
Kaua'i	183,733	712,177	-528,444	-74.2%
Total	2,387,883	8,000,636	-5,612,754	-70.2%

Source: HVCB analysis based on data from DBEDT  
Note: Passenger volume figures include both visitors and residents. Total includes other international passengers. 2020 includes one additional day due to Leap Year (February 29th, 2020).

## State of Hawai'i Hotel Performance by Week - 2020 vs 2019



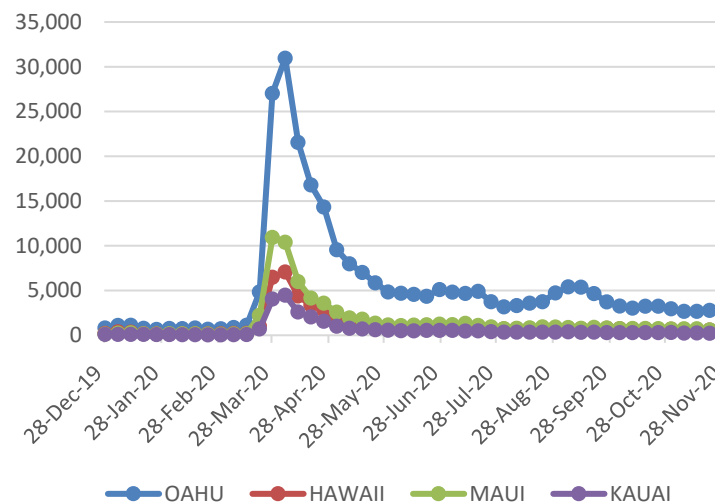
Source: STR, Inc. © Copyright 2020 Hawai'i Tourism Authority

## Hawaii Hotel Performance Info:

For the week of November 22 – November 28, 2020

	Occupancy	ADR	RevPAR
State of Hawaii	24.4%	\$ 275.04	\$ 67.10
Oahu	22.7%	\$ 177.47	\$ 40.28
Maui County	24.4%	\$ 475.52	\$ 116.07
Kauai County	33.0%	\$ 237.83	\$ 78.49
Island of Hawaii	25.7%	\$ 256.90	\$ 65.96

## 2020 Initial Weekly Unemployment Claims by Island



## Weekly Unemployment Initial Claims: November 28, 2020

State of Hawaii	3,566
C&C of Oahu	2,323
Hawaii County	459
Maui County	436
Kauai County	233
Agent (filed in Hawaii against another state)	115

## News Highlights

December 8, 2020

**KHON2:** [Pfizer vaccine data shows strong protection against COVID-19, FDA says](#)

**Hawaii Tribune-Herald:** [House committee: No changes needed to Safe Travels program](#)

**West Hawaii Today:** [Seven new cases of COVID-19 reported on Hawaii Island](#)

**The Garden Island:** [Hawaii hospitals prepare for COVID-19 vaccine](#)

**The Maui News:** [Man arrested for COVID rule violation](#)

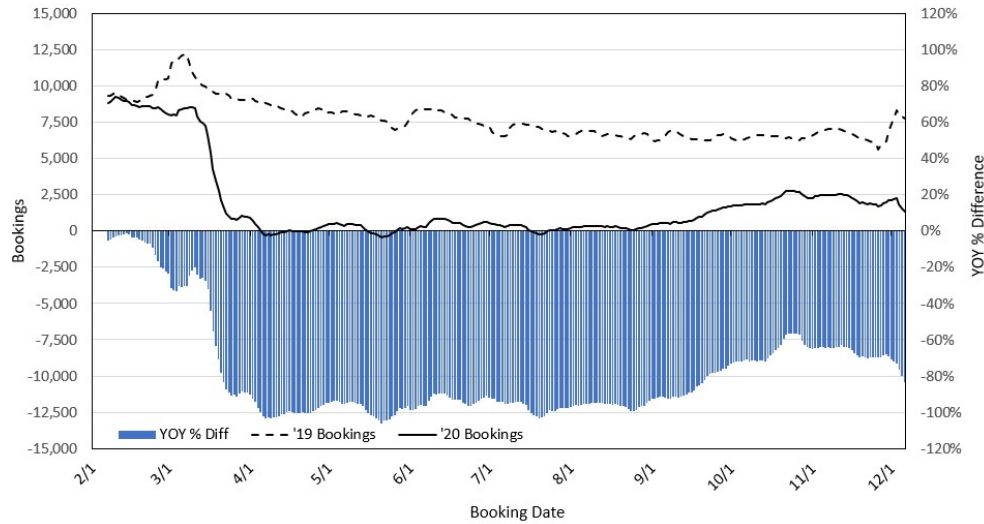
**TravelAge West:** [Hawaiian Airlines Introduces Mainland COVID-19 Testing Centers](#)

**Travel Pulse:** [American Airlines First to Launch Domestic COVID-19 Testing Program](#)

**The Points Guy:** [Hawaii's reopening highlights problems facing tourist destinations, but there's hope for 2021](#)

**AFAR:** [Hawaii's New Remote Work Program Includes Free Flights](#)

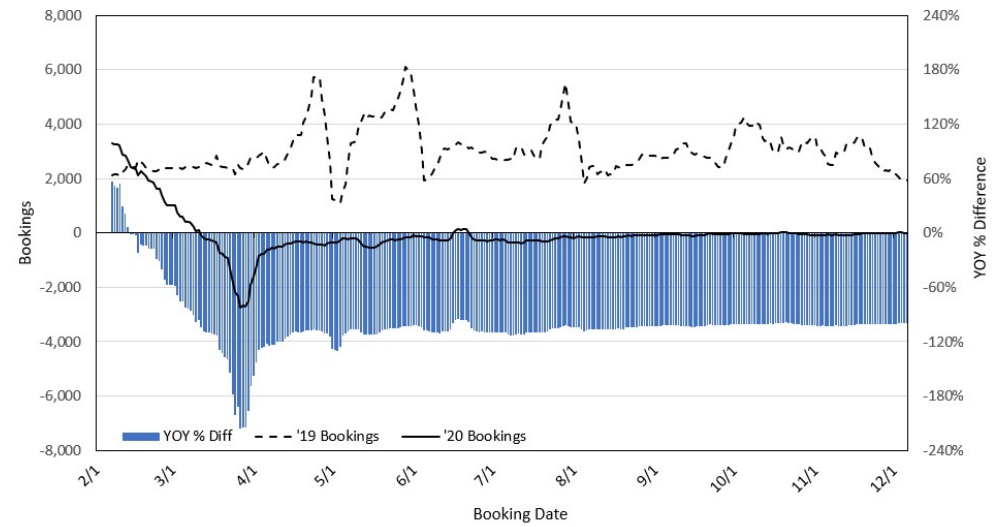
### Travel Agency Bookings to Hawaii for Future Arrivals\* Based on a 7-day Moving Average, 2020 vs 2019 U.S.



\*Future Arrivals refers to all arrivals that are 'future' relative to the referenced booking date.  
Source: Global Agency Pro

Update: Dec 6, 2020

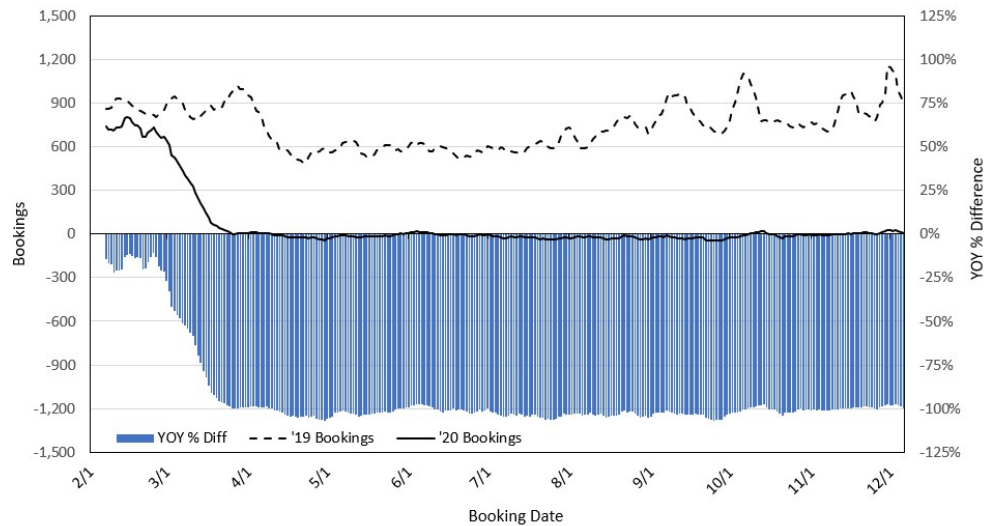
### Travel Agency Bookings to Hawaii for Future Arrivals\* Based on a 7-day Moving Average, 2020 vs 2019 Japan



\*Future Arrivals refers to all arrivals that are 'future' relative to the referenced booking date.  
Source: Global Agency Pro

Update: Dec 6, 2020

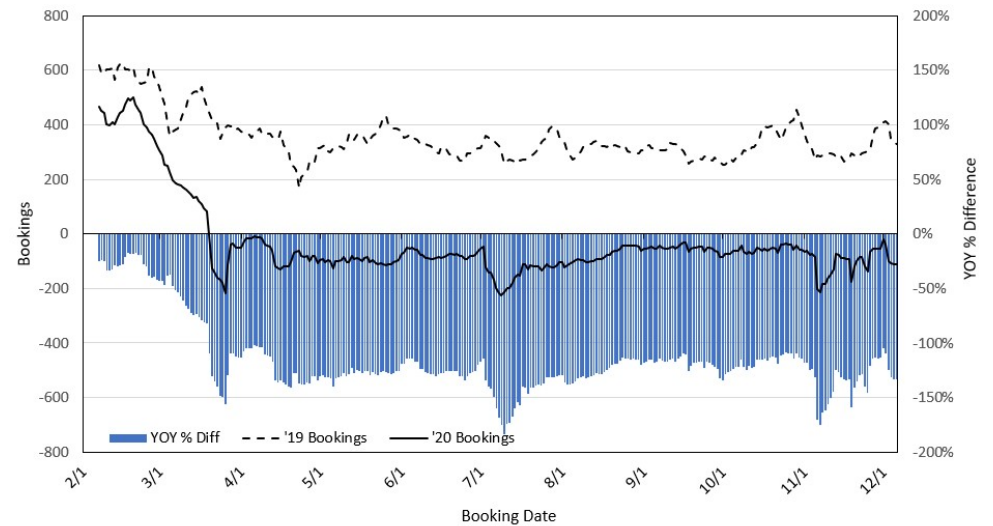
### Travel Agency Bookings to Hawaii for Future Arrivals\* Based on a 7-day Moving Average, 2020 vs 2019 Canada



\*Future Arrivals refers to all arrivals that are 'future' relative to the referenced booking date.  
Source: Global Agency Pro

Update: Dec 6, 2020

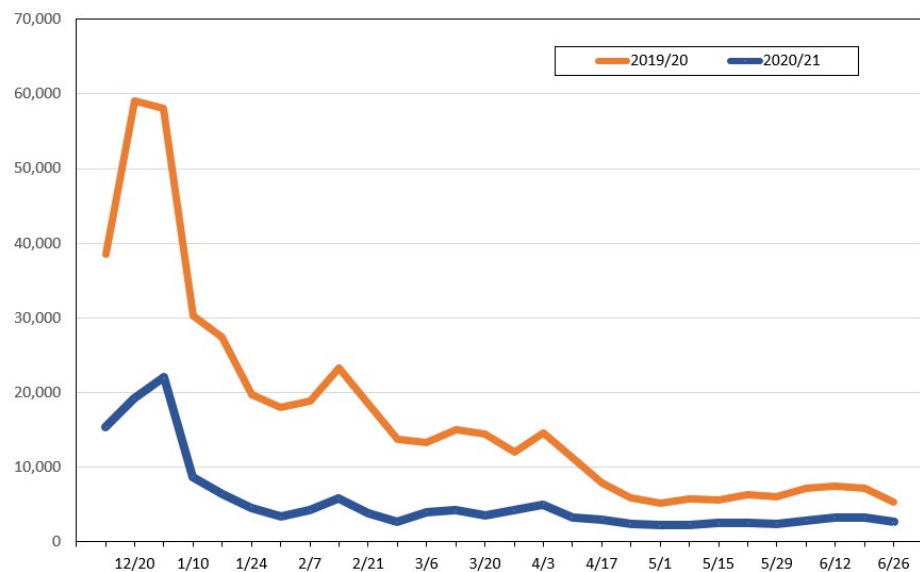
### Travel Agency Bookings to Hawaii for Future Arrivals\* Based on a 7-day Moving Average, 2020 vs 2019 Australia



\*Future Arrivals refers to all arrivals that are 'future' relative to the referenced booking date.  
Source: Global Agency Pro

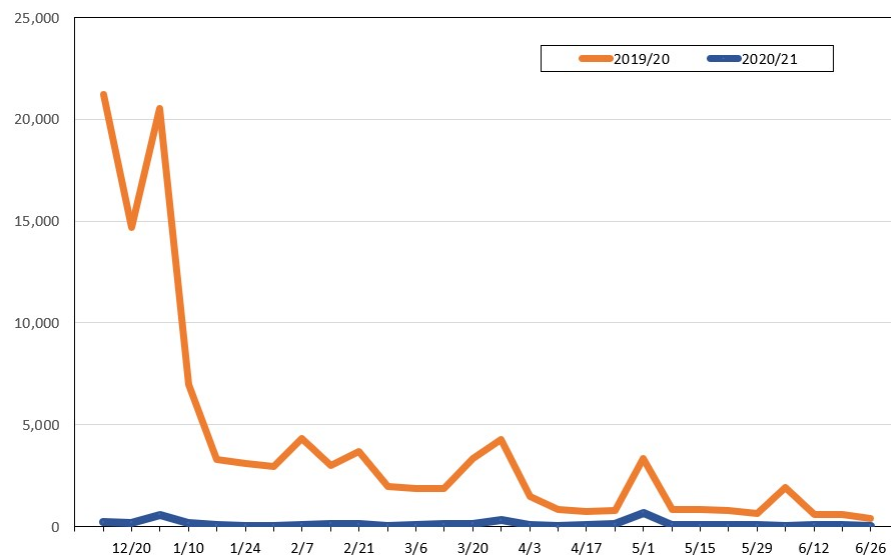
Update: Dec 6, 2020

**Travel Agency Weekly Bookings for Future Travel to Hawai'i as of December 6, 2020**  
**U.S.**



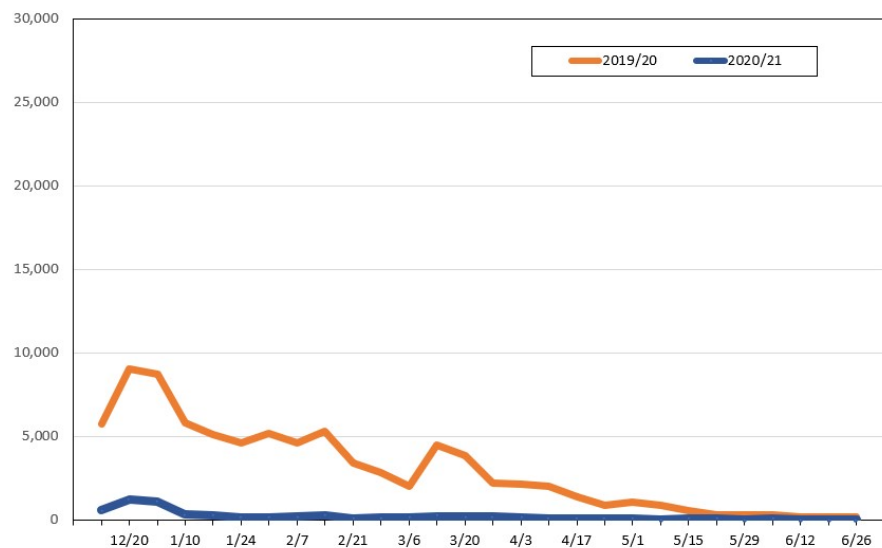
Source: Global Agency Pro, as of December 6, 2020

**Travel Agency Weekly Bookings for Future Travel to Hawai'i as of December 6, 2020**  
**Japan**



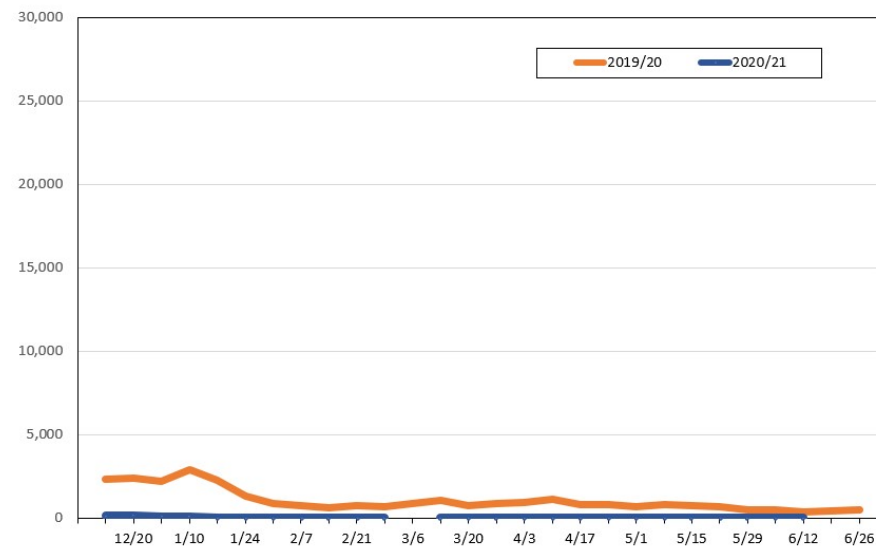
Source: Global Agency Pro, as of December 6, 2020

**Travel Agency Weekly Bookings for Future Travel to Hawai'i as of December 6, 2020**  
**Canada**



Source: Global Agency Pro, as of December 6, 2020

**Travel Agency Weekly Bookings for Future Travel to Hawai'i as of December 6, 2020**  
**Australia**



Source: Global Agency Pro, as of December 6, 2020