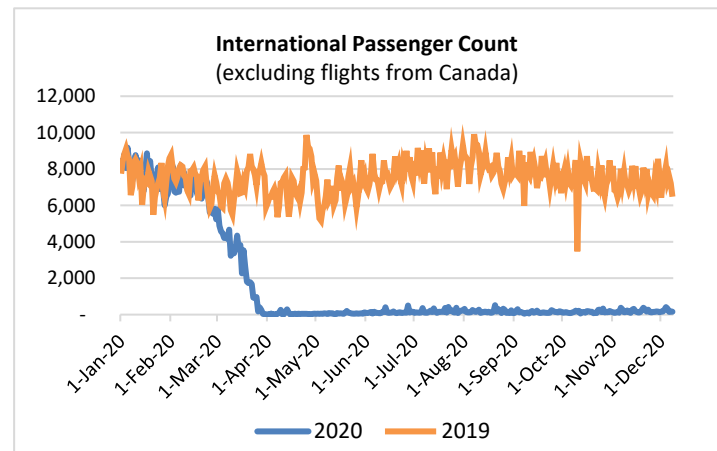
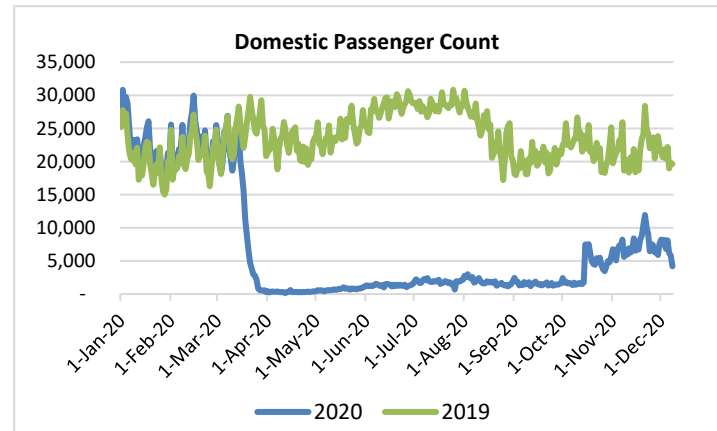
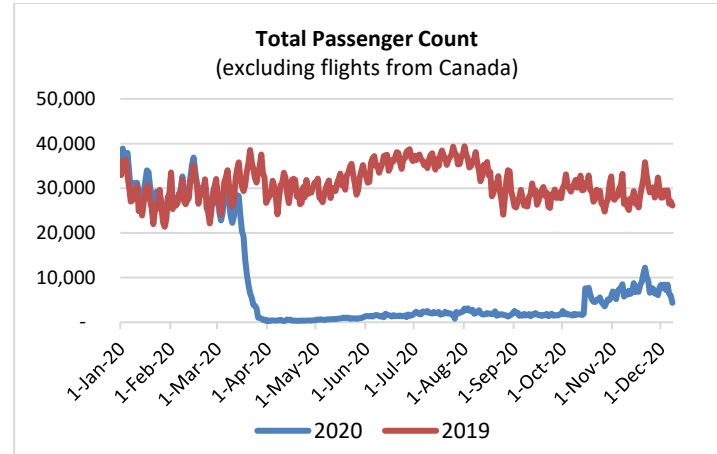


HTA COVID-19 UPDATE

(Issued: 12/9/20 @ 4:00pm)

Reason for Trip by Arrival Airport - Transpacific Screened Passengers as of 12/08/20	Honolulu (HNL)	Kahului (OGG)	Kona (KOA)	Lihue (LIH)	Grand Total
Airline Crew	355	129	69	28	581
Connecting Flight (Transit)	283	6	0	0	289
Corporate Meeting	2	5	0	0	7
Essential Worker	90	21	14	6	131
Honeymoon	7	8	2	0	17
Incentive Trip	0	0	0	0	0
Intended Resident	70	13	25	4	112
Military or Federal Government	77	0	0	1	78
Other	56	10	7	0	73
Other Business	63	10	22	1	96
Pleasure/Vacation	839	936	345	6	2,126
Returning Resident	832	161	132	31	1,156
Sports Event	1	0	0	0	1
To Attend School	2	3	0	0	5
To Get Married	6	7	1	0	14
Transit	4	0	0	0	4
Visiting Friends or Relatives	559	158	123	8	848
Grand Total	3,246	1,467	740	85	5,538

Source: Safe Travels program developed by the State of Hawaii Office of Enterprise Technology Services
Note: The data is preliminary and subject to change



Daily Passenger Count Table

12/08/2020	Domestic	International	Total
Oahu	2211	153	2364
Maui	1265		1265
Island of Hawaii	652		652
Kauai	54		54
State	4182	153	4335

Novel Coronavirus in Hawaii

COVID-19 Positive Cases

Cumulative totals as of 12:00pm on December 9, 2020

Total Confirmed Cases	18,741* (80 new)
Hawaii	1,664
Kauai	121
Lanai	106
Maui	633†
Molokai	22
Oahu	15,924
Out of State	271
Pending	0
Required Hospitalization	1,346‡
Hawaii Deaths	266
Cases in the past 14 days	1,179**

Footnotes for COVID-19 Cases

****Using cases reported in the past 14 days provides a rough approximation of the number of cases currently meeting criteria for isolation. This proxy number for "active cases" resolves classification issues for cases unable to be reached or who are out of jurisdiction, for whom precise release from isolation date may not be possible to determine. It is also not influenced by lags in data entry. (This total does not include Hawaii residents diagnosed outside of Hawaii)**

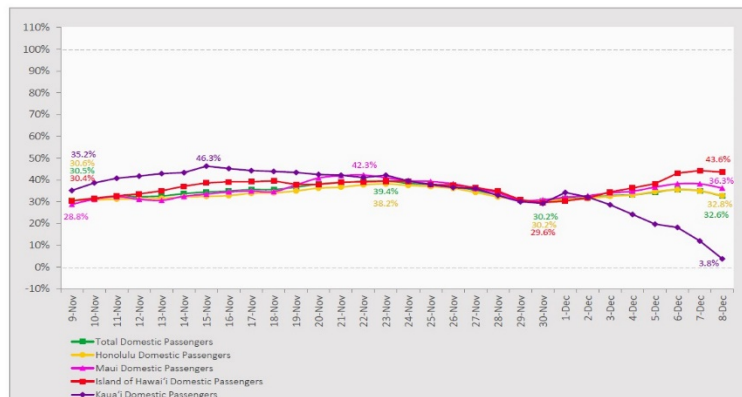
†One case is a Lanai resident whose exposure is on Maui Island and who will be remaining on Maui Island for the interim.

#Includes Hawaii residents hospitalized out of state.

§Includes cases that meet isolation release criteria (Isolation should be maintained until at least 24 hours after resolution of fever and myalgia without the use of antipyretics OR at least 10 days have passed since symptom onset, whichever is longer). (The cases that have died and one case that has left the jurisdiction have been removed from these counts). Positive cases include confirmed cases, and Hawaii residents and non-residents; data are preliminary and subject to change. Note that CDC provides case counts according to states of residence.

7-Day Domestic by Island Moving Average Daily Passenger Volume

2020 Volume as Percentage of 2019 Volume
Through December 8, 2020



Source: HVCB analysis based on data from DBEDT
Note: Passenger volume figures include both visitors and residents.

Domestic by Island Month-to-Date and Year-to-Date Daily Passenger Volume

2020 Volume versus 2019 Volume
Through December 8, 2020

December 2020 (Month-to-Date through December 8)

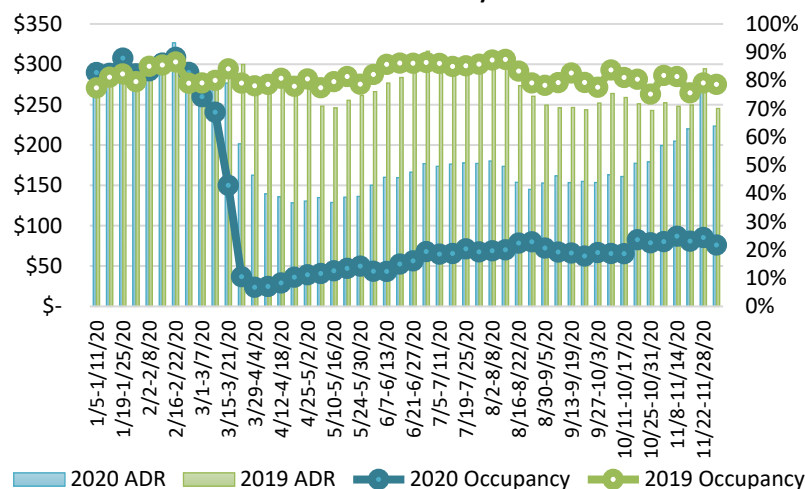
	2020	2019	Volume Change	Percent Change
Honolulu	30,414	95,530	-65,116	-68.2%
Maui County	15,884	44,598	-28,714	-64.4%
Island of Hawai'i	7,252	17,651	-10,399	-58.9%
Kaua'i	1,425	13,671	-12,246	-89.6%
Total	54,975	171,450	-116,475	-67.9%

2020 (Year-to-Date through December 8)

	2020	2019	Volume Change	Percent Change
Honolulu	1,387,132	4,307,894	-2,920,762	-67.8%
Maui County	549,644	2,090,199	-1,540,555	-73.7%
Island of Hawai'i	271,502	907,970	-636,468	-70.1%
Kaua'i	183,707	713,526	-529,819	-74.3%
Total	2,391,985	8,019,589	-5,627,605	-70.2%

Source: HVCB analysis based on data from DBEDT
Note: Passenger volume figures include both visitors and residents. Total includes other international passengers. 2020 includes one additional day due to Leap Year (February 29th, 2020).

State of Hawai'i Hotel Performance by Week - 2020 vs 2019



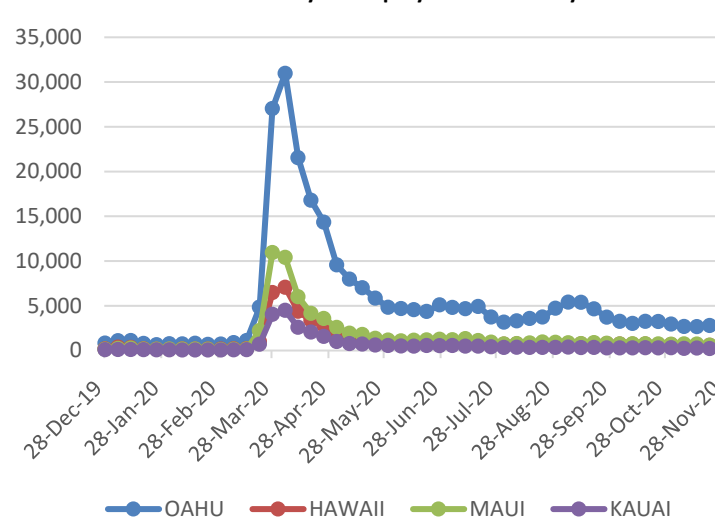
Source: STR, Inc. © Copyright 2020 Hawai'i Tourism Authority

Hawaii Hotel Performance Info:

For the week of November 29 – December 05, 2020

	Occupancy	ADR	RevPAR
State of Hawaii	21.7%	\$ 223.44	\$ 48.53
Oahu	21.2%	\$ 162.06	\$ 34.43
Maui County	22.8%	\$ 345.70	\$ 78.85
Kauai County	21.5%	\$ 204.63	\$ 43.94
Island of Hawaii	21.5%	\$ 213.53	\$ 45.99

2020 Initial Weekly Unemployment Claims by Island



Weekly Unemployment Initial Claims: November 28, 2020

State of Hawaii	3,566
C&C of Oahu	2,323
Hawaii County	459
Maui County	436
Kauai County	233
Agent (filed in Hawaii against another state)	115

News Highlights

December 9, 2020

Honolulu Star Advertiser: [Arriving air passengers in Hawaii without COVID-19 test to face 10-day quarantine](#)

KHON2: [Vaccines could come to Hawaii as soon as mid-December, says Lt. Gov. Josh Green](#)

KITV4: [DOH conducting COVID-19 vaccine survey](#)

The Garden Island: [County announces three new cases of COVID-19](#)

Yahoo News: [Avoid quarantine in Hawaii? WestJet offers COVID-19 testing for Canadians to bypass 14-day rule](#)

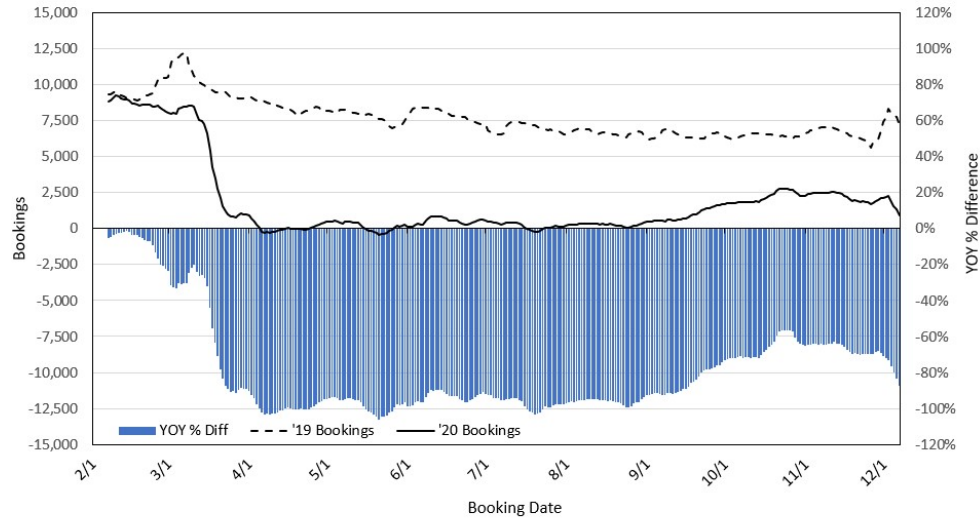
CNBC: [This Hawaii program will pay your airfare to live and work remotely from the islands](#)

Inside Edition: [Thinking of Moving to Hawaii? Free Round Trips Offered to Remote Workers Wanting to Live There Temporarily](#)

The Washington Post: [The Health 202: States are receiving vaccines based on the size -- not the risk -- of their populations](#)

USA Today: [The CDC advises COVID-19 tests for holiday travel: 8 do's and don'ts ahead of your trip](#)

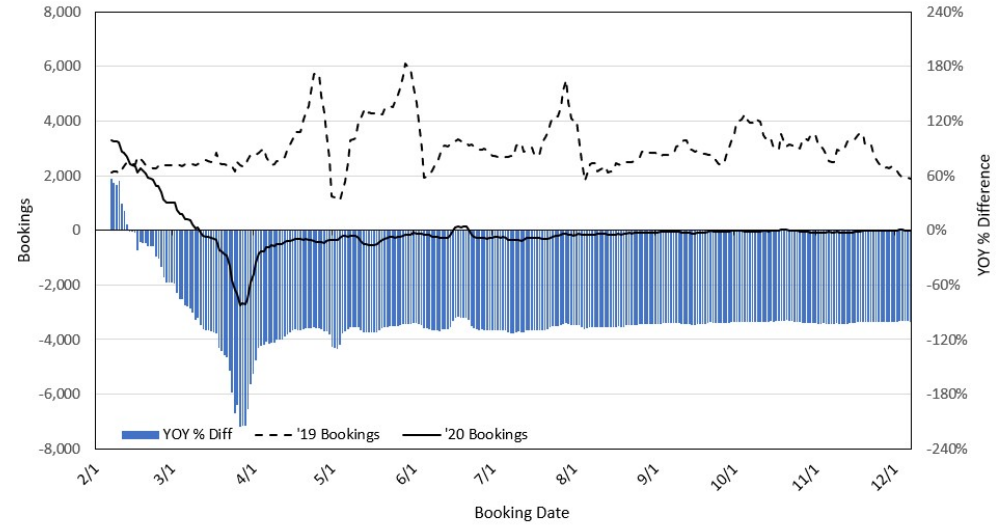
Travel Agency Bookings to Hawaii for Future Arrivals* Based on a 7-day Moving Average, 2020 vs 2019 U.S.



*Future Arrivals refers to all arrivals that are 'future' relative to the referenced booking date.
Source: Global Agency Pro

Update: Dec 7, 2020

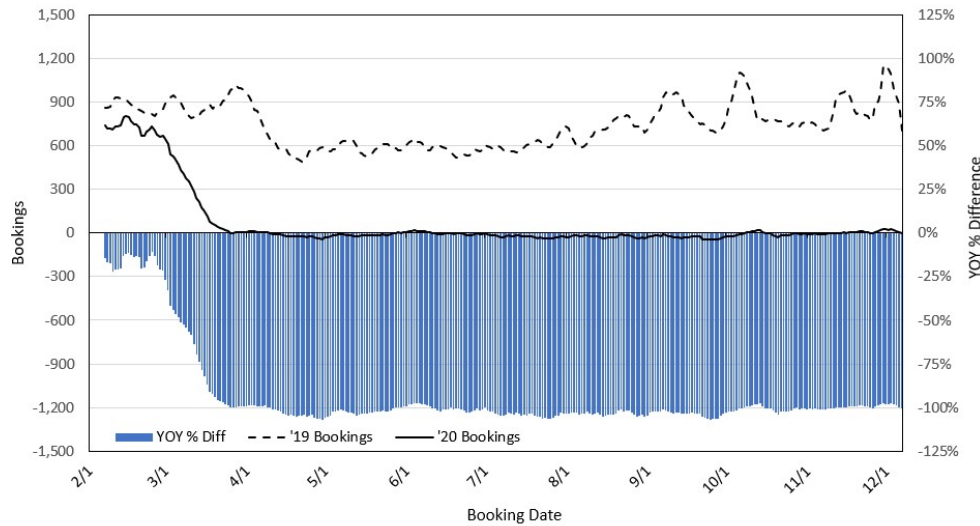
Travel Agency Bookings to Hawaii for Future Arrivals* Based on a 7-day Moving Average, 2020 vs 2019 Japan



*Future Arrivals refers to all arrivals that are 'future' relative to the referenced booking date.
Source: Global Agency Pro

Update: Dec 7, 2020

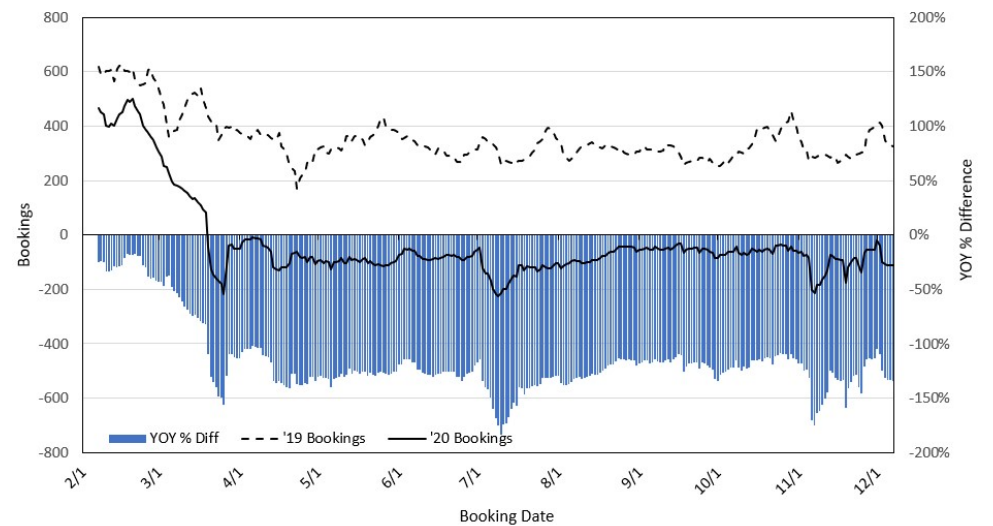
Travel Agency Bookings to Hawaii for Future Arrivals* Based on a 7-day Moving Average, 2020 vs 2019 Canada



*Future Arrivals refers to all arrivals that are 'future' relative to the referenced booking date.
Source: Global Agency Pro

Update: Dec 7, 2020

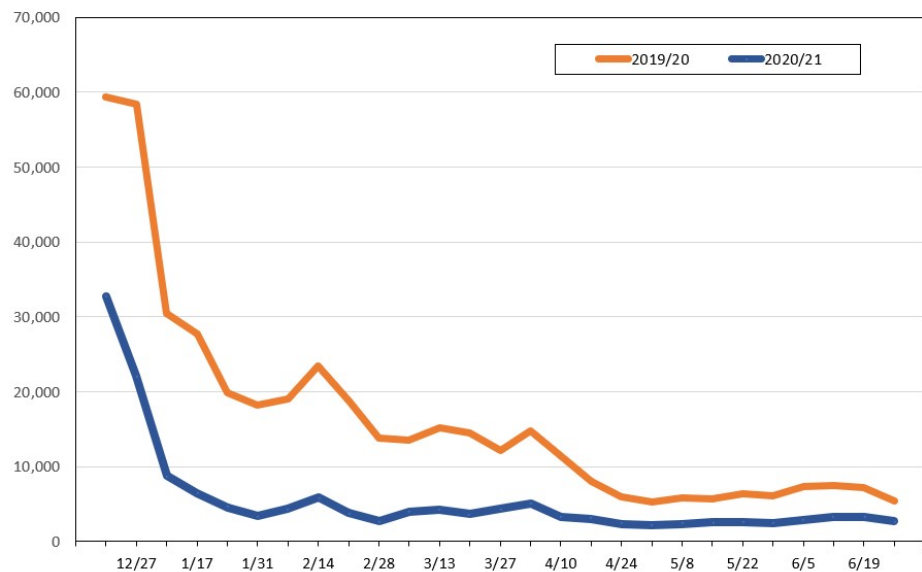
Travel Agency Bookings to Hawaii for Future Arrivals* Based on a 7-day Moving Average, 2020 vs 2019 Australia



*Future Arrivals refers to all arrivals that are 'future' relative to the referenced booking date.
Source: Global Agency Pro

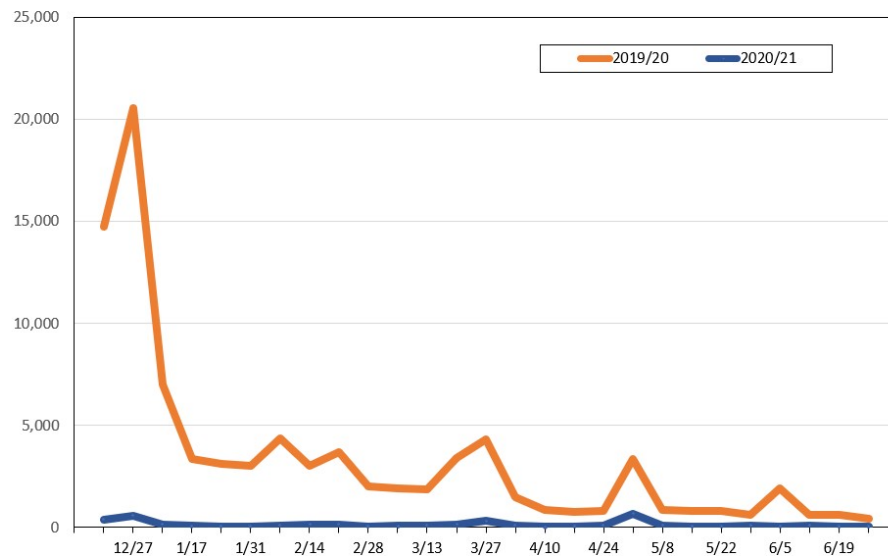
Update: Dec 7, 2020

Travel Agency Weekly Bookings for Future Travel to Hawai'i as of December 7, 2020
U.S.



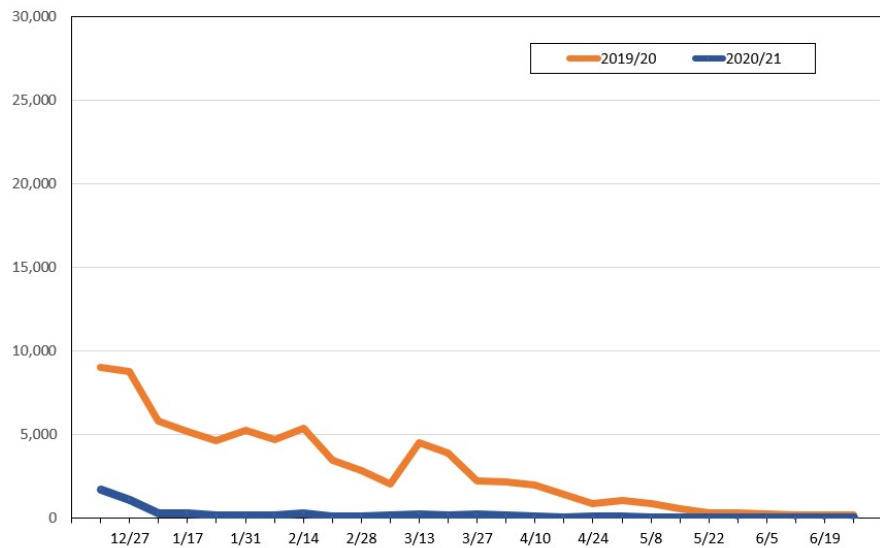
Source: Global Agency Pro, as of December 7, 2020

Travel Agency Weekly Bookings for Future Travel to Hawai'i as of December 7, 2020
Japan



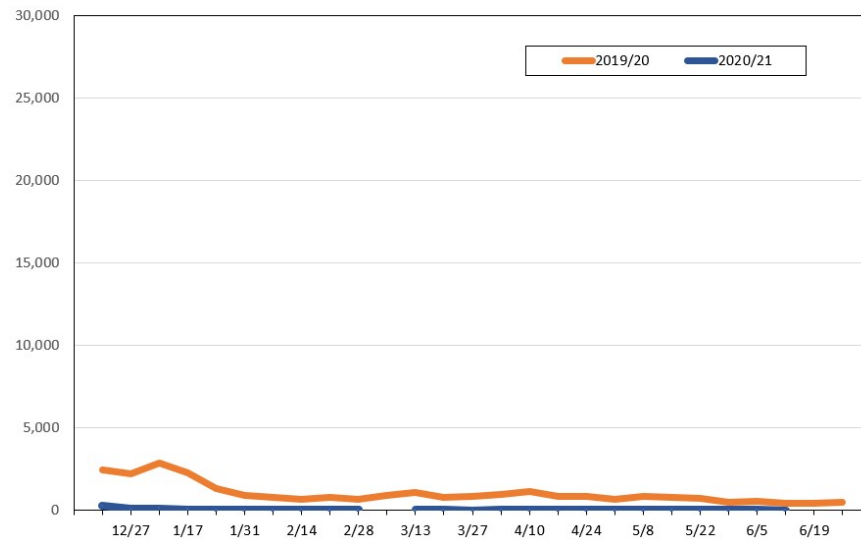
Source: Global Agency Pro, as of December 7, 2020

Travel Agency Weekly Bookings for Future Travel to Hawai'i as of December 7, 2020
Canada



Source: Global Agency Pro, as of December 7, 2020

Travel Agency Weekly Bookings for Future Travel to Hawai'i as of December 7, 2020
Australia



Source: Global Agency Pro, as of December 7, 2020