

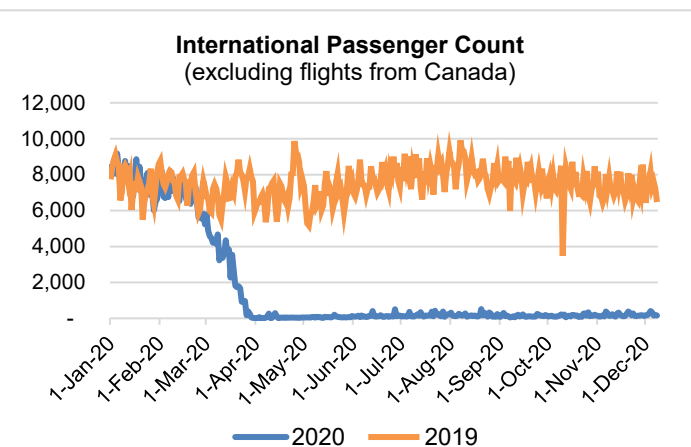
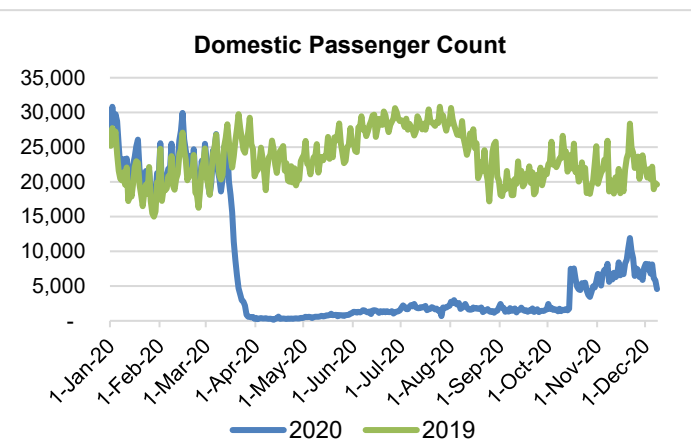
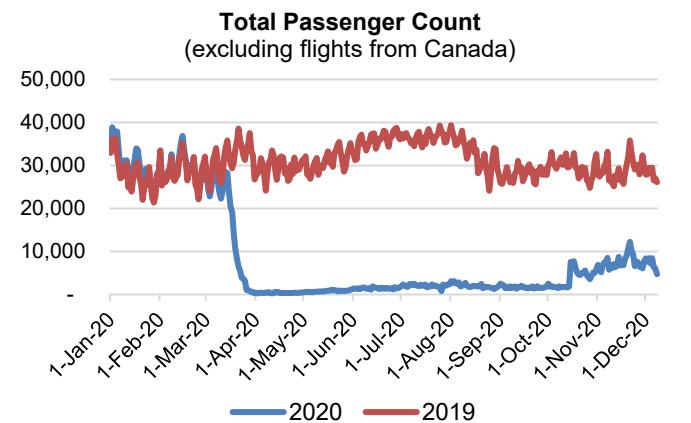
HTA COVID-19 UPDATE

(Issued: 12/10/20 @ 4:30pm)

Reason for Trip by Arrival Airport - Transpacific Screened Passengers as of 12/09/20	Honolulu (HNL)	Kahului (OGG)	Kona (KOA)	Lihue (LIH)	Grand Total
Airline Crew	378	145	75	19	617
Connecting Flight (Transit)	285	7	2	4	298
Corporate Meeting	4	0	0	0	4
Essential Worker	64	22	12	3	101
Honeymoon	3	8	1	0	12
Intended Resident	78	21	19	0	118
Military or Federal Government	96	1	0	0	97
Other	39	17	10	0	66
Other Business	73	24	17	2	116
Pleasure/Vacation	1,162	1,222	427	14	2,825
Returning Resident	827	159	126	27	1,139
Sports Event	1	0	0	0	1
To Attend School	4	0	0	0	4
To Get Married	3	3	2	0	8
Transit	1	0	0	0	1
Visiting Friends or Relatives	834	183	162	9	1,188
Grand Total	3,852	1,812	853	78	6,595

Source: Safe Travels program developed by the State of Hawaii Office of Enterprise Technology Services

Note: The data is preliminary and subject to change



Daily Passenger Count Table

12/09/2020	Domestic	International	Total
Oahu	3282	192	3474
Maui	1444		1444
Island of Hawaii	703		703
Kauai	64		64
State	5493	192	5685

Novel Coronavirus in Hawaii

COVID-19 Positive Cases

Cumulative totals as of 12:00pm on December 10, 2020

Total Confirmed Cases	18,864* (123 new)
Hawaii	1,688
Kauai	123
Lanai	106
Maui	644†
Molokai	22
Oahu	16,003
Out of State	278
Pending	0
Required Hospitalization	1,354‡
Hawaii Deaths	268
Cases in the past 14 days	1,175**

Footnotes for COVID-19 Cases

****Using cases reported in the past 14 days provides a rough approximation of the number of cases currently meeting criteria for isolation. This proxy number for "active cases" resolves classification issues for cases unable to be reached or who are out of jurisdiction, for whom precise release from isolation date may not be possible to determine. It is also not influenced by lags in data entry. (This total does not include Hawaii residents diagnosed outside of Hawaii)**

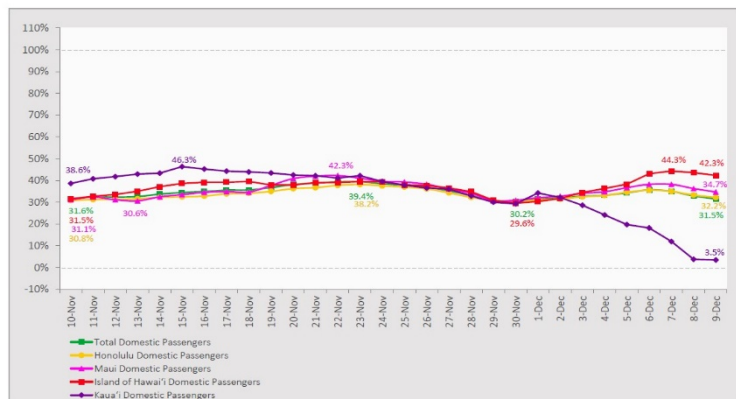
†One case is a Lanai resident whose exposure is on Maui Island and who will be remaining on Maui Island for the interim.

#Includes Hawaii residents hospitalized out of state.

§Includes cases that meet isolation release criteria (Isolation should be maintained until at least 24 hours after resolution of fever and myalgia without the use of antipyretics OR at least 10 days have passed since symptom onset, whichever is longer). (The cases that have died and one case that has left the jurisdiction have been removed from these counts). Positive cases include confirmed cases, and Hawaii residents and non-residents; data are preliminary and subject to change. Note that CDC provides case counts according to states of residence.

7-Day Domestic by Island Moving Average Daily Passenger Volume

2020 Volume as Percentage of 2019 Volume
Through December 9, 2020



Source: HVCB analysis based on data from DBEDT
Note: Passenger volume figures include both visitors and residents.

Domestic by Island Month-to-Date and Year-to-Date Daily Passenger Volume

2020 Volume versus 2019 Volume
Through December 9, 2020

December 2020 (Month-to-Date through December 9)

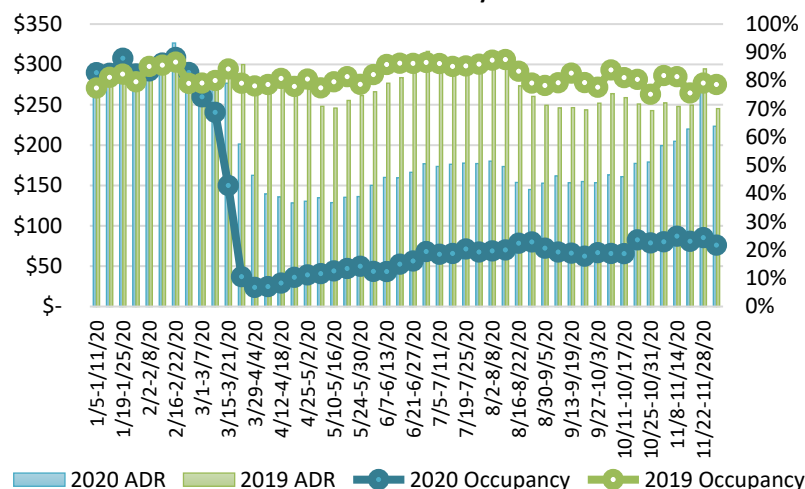
	2020	2019	Volume Change	Percent Change
Honolulu	34,095	106,723	-72,628	-68.1%
Maui County	17,328	49,495	-32,167	-65.0%
Island of Hawai'i	7,955	19,584	-11,629	-59.4%
Kaua'i	1,489	15,462	-13,973	-90.4%
Total	60,867	191,264	-130,397	-68.2%

2020 (Year-to-Date through December 9)

	2020	2019	Volume Change	Percent Change
Honolulu	1,390,813	4,319,087	-2,928,274	-67.8%
Maui County	551,088	2,095,096	-1,544,008	-73.7%
Island of Hawai'i	272,205	909,903	-637,698	-70.1%
Kaua'i	183,771	715,317	-531,546	-74.3%
Total	2,397,877	8,039,403	-5,641,527	-70.2%

Source: HVCB analysis based on data from DBEDT
Note: Passenger volume figures include both visitors and residents. Total includes other international passengers. 2020 includes one additional day due to Leap Year (February 29th, 2020).

State of Hawai'i Hotel Performance by Week - 2020 vs 2019



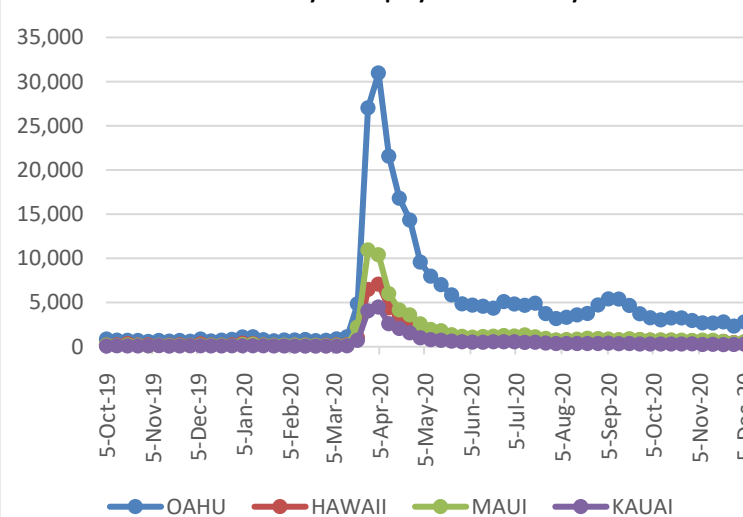
Source: STR, Inc. © Copyright 2020 Hawai'i Tourism Authority

Hawaii Hotel Performance Info:

For the week of November 29 – December 05, 2020

	Occupancy	ADR	RevPAR
State of Hawaii	21.7%	\$ 223.44	\$ 48.53
Oahu	21.2%	\$ 162.06	\$ 34.43
Maui County	22.8%	\$ 345.70	\$ 78.85
Kauai County	21.5%	\$ 204.63	\$ 43.94
Island of Hawaii	21.5%	\$ 213.53	\$ 45.99

2020 Initial Weekly Unemployment Claims by Island



Weekly Unemployment Initial Claims: December 05, 2020

State of Hawaii	4,291
C&C of Oahu	2,780
Hawaii County	512
Maui County	552
Kauai County	267
Agent (filed in Hawaii against another state)	180

News Highlights

December 10, 2020

Honolulu Star Advertiser:

[Honolulu Mayor Kirk Caldwell pushing Gov. David Ige for Safe Travels changes, discusses post-term plans](#)

Hawaii News Now: [‘A real game changer’: Hawaii doctor shares his experience in COVID-19 vaccine trial](#)

KHON2: [Cruise ship arriving at Honolulu Harbor says COVID-19 safety measures have been taken](#)

KHON2: [The Safe Travels Program is working but some want to add mandatory post testing](#)

Pacific Business News: [Ige to furlough thousands of Hawaii state workers beginning in January](#)

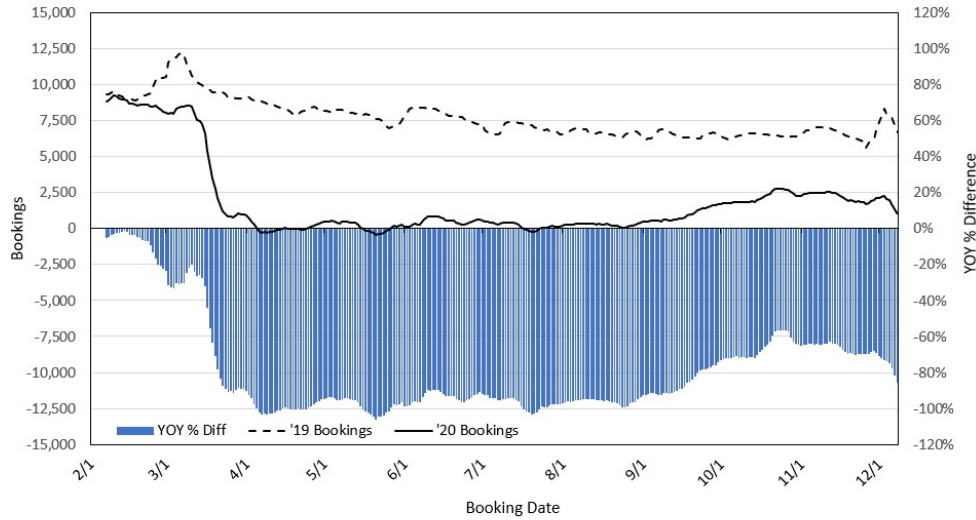
West Hawaii Today: [Poll: Fewer than half intend to get vaccine](#)

Insider Hook: [A New Program in Hawaii Will Pay for You to Work Remotely in the State](#)

CBS News: [What travelers should know about COVID-19 testing before boarding a plane](#)

Forbes: [Do You Have To Quarantine After Traveling Out Of State?](#)

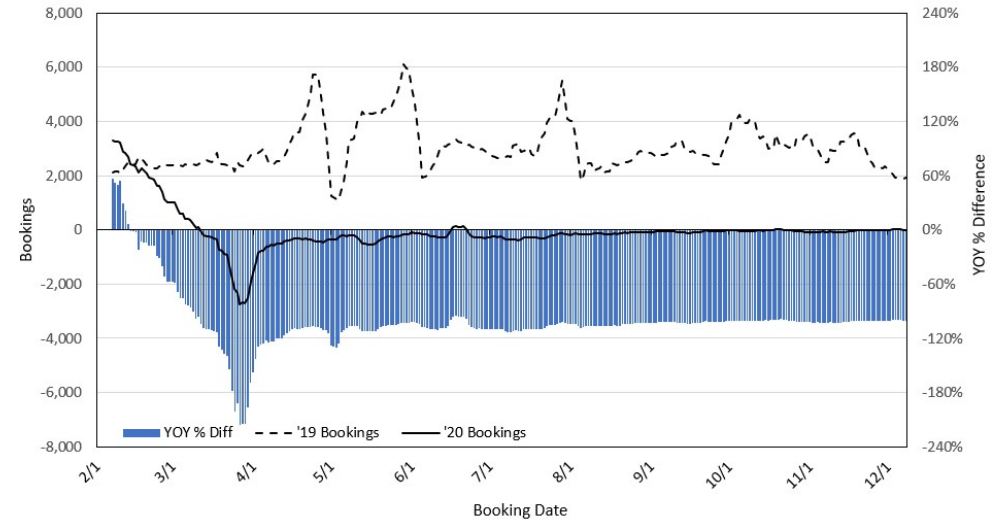
Travel Agency Bookings to Hawaii for Future Arrivals* Based on a 7-day Moving Average, 2020 vs 2019 U.S.



*Future Arrivals refers to all arrivals that are 'future' relative to the referenced booking date.
Source: Global Agency Pro

Update: Dec 8, 2020

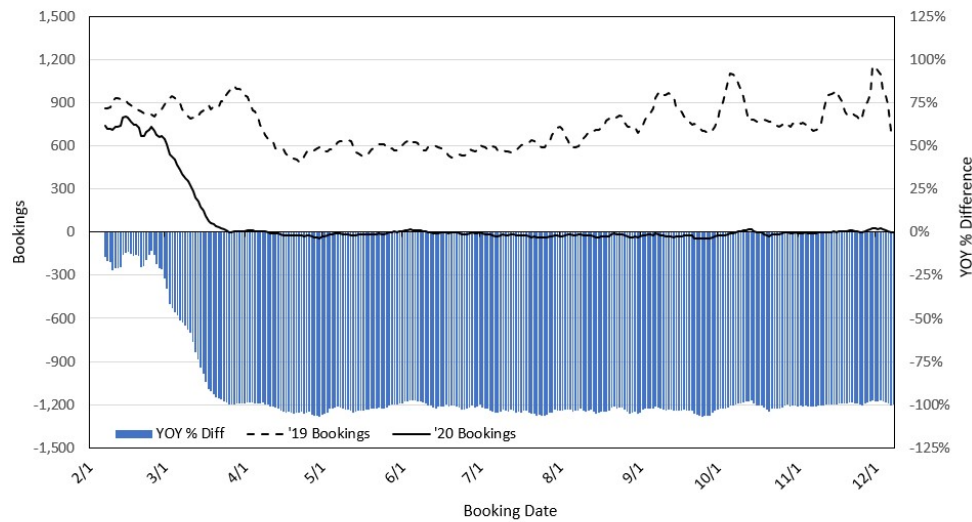
Travel Agency Bookings to Hawaii for Future Arrivals* Based on a 7-day Moving Average, 2020 vs 2019 Japan



*Future Arrivals refers to all arrivals that are 'future' relative to the referenced booking date.
Source: Global Agency Pro

Update: Dec 8, 2020

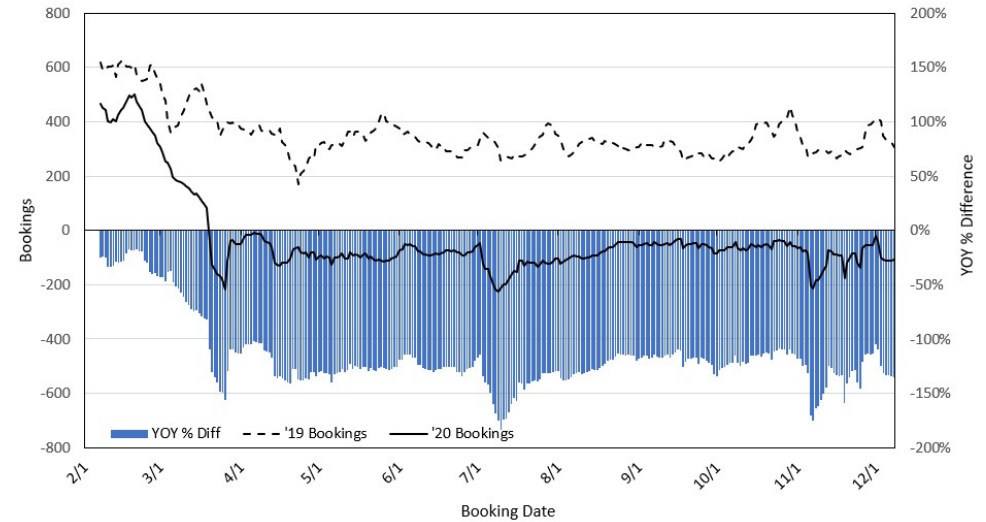
Travel Agency Bookings to Hawaii for Future Arrivals* Based on a 7-day Moving Average, 2020 vs 2019 Canada



*Future Arrivals refers to all arrivals that are 'future' relative to the referenced booking date.
Source: Global Agency Pro

Update: Dec 8, 2020

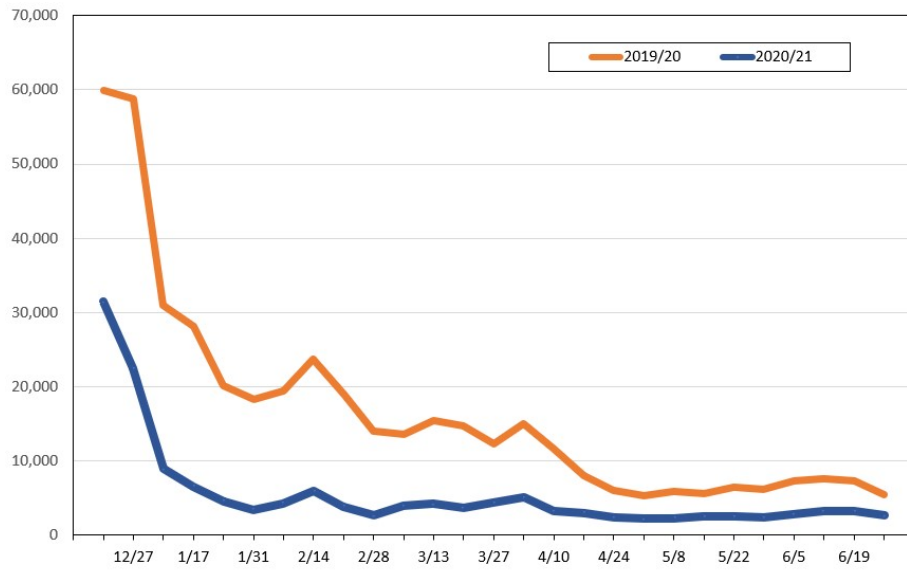
Travel Agency Bookings to Hawaii for Future Arrivals* Based on a 7-day Moving Average, 2020 vs 2019 Australia



*Future Arrivals refers to all arrivals that are 'future' relative to the referenced booking date.
Source: Global Agency Pro

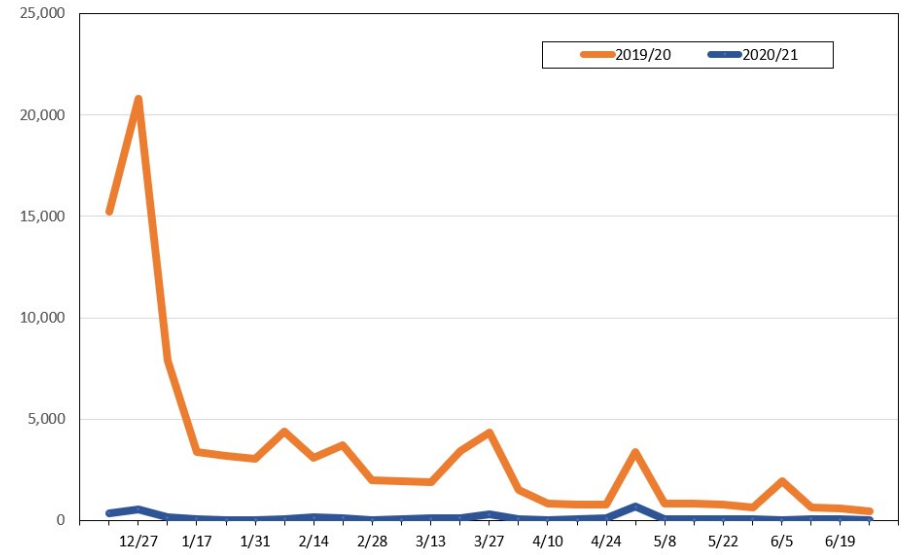
Update: Dec 8, 2020

Travel Agency Weekly Bookings for Future Travel to Hawai'i as of December 8, 2020
U.S.



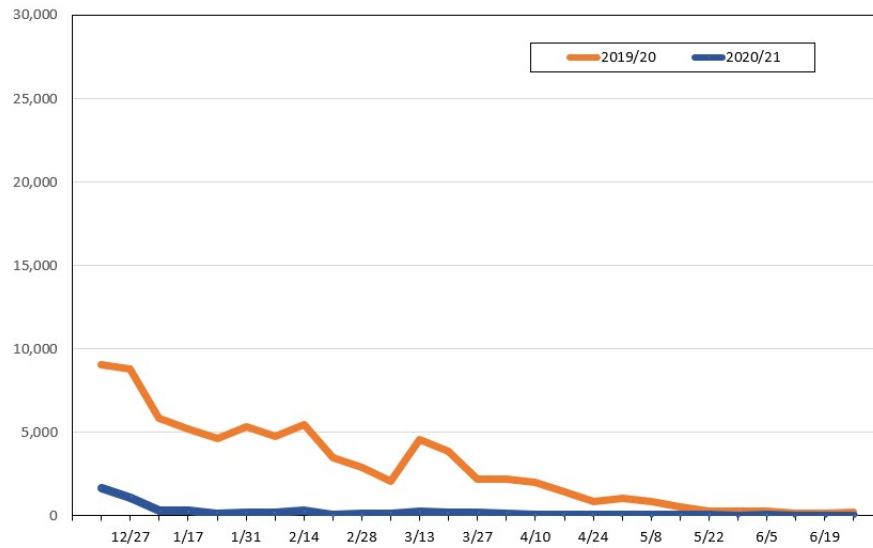
Source: Global Agency Pro, as of December 8, 2020

Travel Agency Weekly Bookings for Future Travel to Hawai'i as of December 8, 2020
Japan



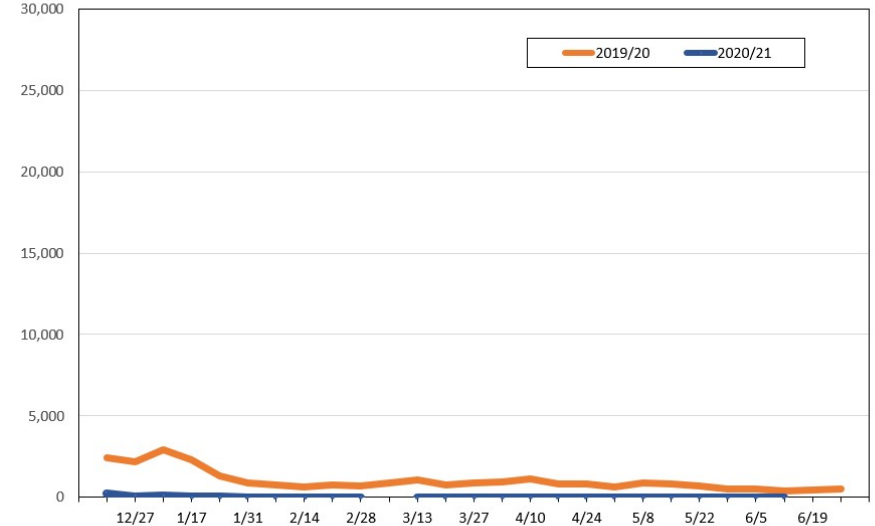
Source: Global Agency Pro, as of December 8, 2020

Travel Agency Weekly Bookings for Future Travel to Hawai'i as of December 8, 2020
Canada



Source: Global Agency Pro, as of December 8, 2020

Travel Agency Weekly Bookings for Future Travel to Hawai'i as of December 8, 2020
Australia



Source: Global Agency Pro, as of December 8, 2020