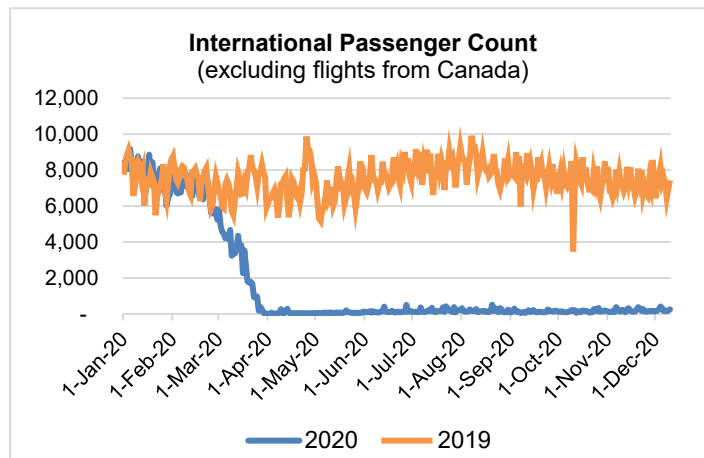
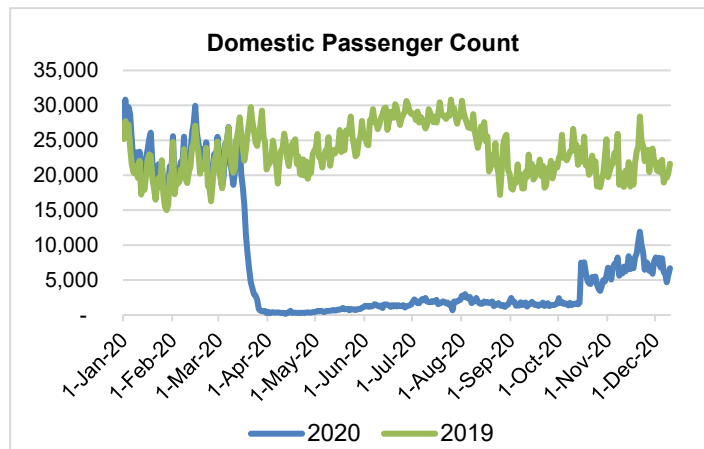
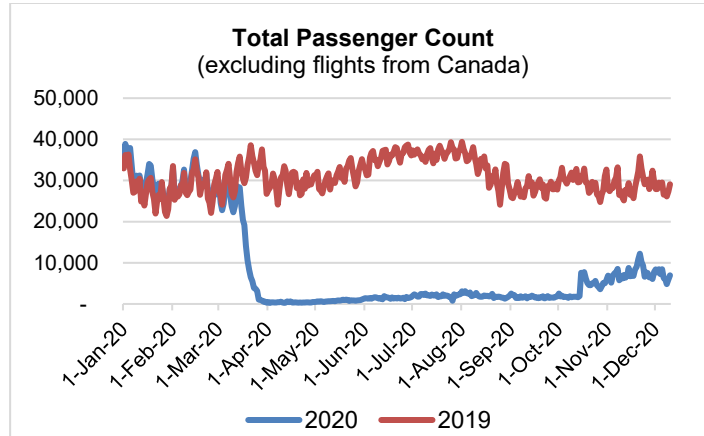


HTA COVID-19 UPDATE

(Issued: 12/11/20 @ 4:30pm)

Reason for Trip by Arrival Airport - Transpacific Screened Passengers as of 12/10/20	Honolulu (HNL)	Kahului (OGG)	Kona (KOA)	Lihue (LIH)	Grand Total
Airline Crew	402	129	84	23	638
Connecting Flight (Transit)	356	15	1	0	372
Corporate Meeting	4	5	1	0	10
Essential Worker	73	19	11	4	107
Honeymoon	7	13	4	0	24
Incentive Trip	2	2	2	0	6
Intended Resident	128	34	34	14	210
Military or Federal Government	120	2	0	0	122
Other	60	20	27	2	109
Other Business	68	43	23	3	137
Pleasure/Vacation	1,553	1,544	687	23	3,807
Returning Resident	907	175	150	27	1,259
Sports Event	3	0	1	0	4
To Attend School	3	0	0	0	3
To Get Married	8	9	0	0	17
Transit	2	0	0	0	2
Visiting Friends or Relatives	1,076	285	235	15	1,611
Grand Total	4,772	2,295	1,260	111	8,438

Source: Safe Travels program developed by the State of Hawaii Office of Enterprise Technology Services
Note: The data is preliminary and subject to change



Daily Passenger Count Table

12/10/2020	Domestic	International	Total
Oahu	4036	249	4285
Maui	1508		1508
Island of Hawaii	1087		1087
Kauai	62		62
State	6693	249	6942

Novel Coronavirus in Hawaii

COVID-19 Positive Cases

Cumulative totals as of 12:00pm on December 11, 2020

Total Confirmed Cases	18,951* (89 new)
Hawaii	1,691
Kauai	125
Lanai	106
Maui	662†
Molokai	22
Oahu	16,059
Out of State	286
Pending	0
Required Hospitalization	1,357‡
Hawaii Deaths	269
Cases in the past 14 days	1,171**

Footnotes for COVID-19 Cases

*As a result of update information, one case on Maui and one case on Oahu were removed from the counts.

**Using cases reported in the past 14 days provides a rough approximation of the number of cases currently meeting criteria for isolation. This proxy number for "active cases" resolves classification issues for cases unable to be reached or who are out of jurisdiction, for whom precise release from isolation date may not be possible to determine. It is also not influenced by lags in data entry. (This total does not include Hawaii residents diagnosed outside of Hawaii)

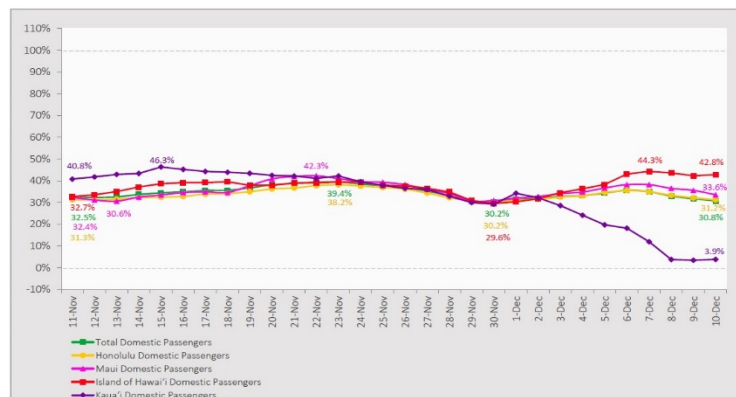
†One case is a Lanai resident whose exposure is on Maui Island and who will be remaining on Maui Island for the interim.

‡Includes Hawaii residents hospitalized out of state.

§Includes cases that meet isolation release criteria (Isolation should be maintained until at least 24 hours after resolution of fever and myalgia without the use of antipyretics OR at least 10 days have passed since symptom onset, whichever is longer). (The cases that have died and one case that has left the jurisdiction have been removed from these counts). Positive cases include confirmed cases, and Hawaii residents and non-residents; data are preliminary and subject to change. Note that CDC provides case counts according to states of residence.

7-Day Domestic by Island Moving Average Daily Passenger Volume

2020 Volume as Percentage of 2019 Volume
Through December 10, 2020



Source: HVCB analysis based on data from DBEDT
Note: Passenger volume figures include both visitors and residents.

Domestic by Island Month-to-Date and Year-to-Date Daily Passenger Volume

2020 Volume versus 2019 Volume
Through December 10, 2020

December 2020 (Month-to-Date through December 10)

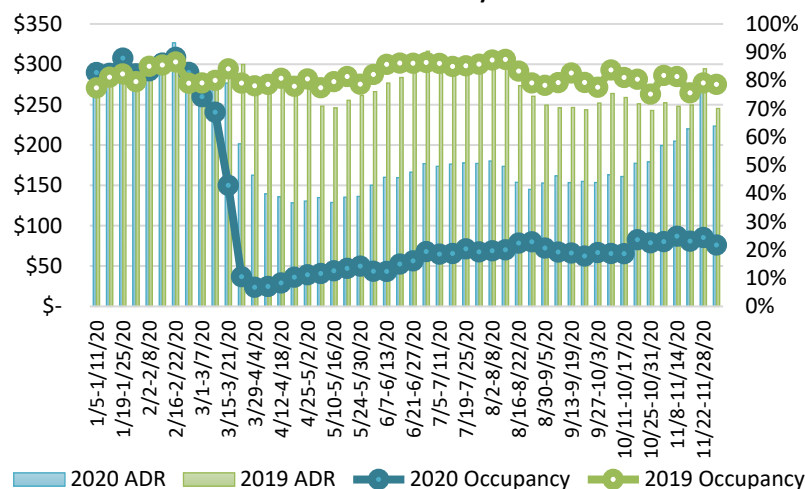
	2020	2019	Volume Change	Percent Change
Honolulu	38,131	117,841	-79,710	-67.6%
Maui County	19,167	54,840	-35,673	-65.0%
Island of Hawai'i	9,042	21,484	-12,442	-57.9%
Kaua'i	1,551	16,742	-15,191	-90.7%
Total	67,891	210,907	-143,016	-67.8%

2020 (Year-to-Date through December 10)

	2020	2019	Volume Change	Percent Change
Honolulu	1,394,849	4,330,205	-2,935,356	-67.8%
Maui County	552,927	2,100,441	-1,547,514	-73.7%
Island of Hawai'i	273,292	911,803	-638,511	-70.0%
Kaua'i	183,833	716,597	-532,764	-74.3%
Total	2,404,901	8,059,046	-5,654,146	-70.2%

Source: HVCB analysis based on data from DBEDT
Note: Passenger volume figures include both visitors and residents. Total includes other international passengers. 2020 includes one additional day due to Leap Year (February 29th, 2020).

State of Hawai'i Hotel Performance by Week - 2020 vs 2019



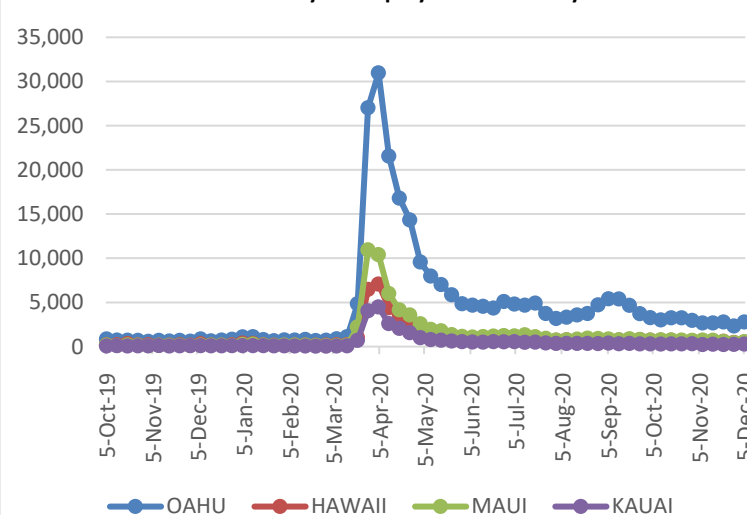
Source: STR, Inc. © Copyright 2020 Hawai'i Tourism Authority

Hawaii Hotel Performance Info:

For the week of November 29 – December 05, 2020

	Occupancy	ADR	RevPAR
State of Hawaii	21.7%	\$ 223.44	\$ 48.53
Oahu	21.2%	\$ 162.06	\$ 34.43
Maui County	22.8%	\$ 345.70	\$ 78.85
Kauai County	21.5%	\$ 204.63	\$ 43.94
Island of Hawaii	21.5%	\$ 213.53	\$ 45.99

2020 Initial Weekly Unemployment Claims by Island



Weekly Unemployment Initial Claims: December 05, 2020

State of Hawaii	4,291
C&C of Oahu	2,780
Hawaii County	512
Maui County	552
Kauai County	267
Agent (filed in Hawaii against another state)	180

News Highlights

December 11, 2020

Honolulu Civil Beat: [Lift The Suspension Of Hawaii's Public Records Law](#)

The Maui News: [Kalaupapa reports first COVID-19 case](#)

Maui Now: [FDA Panel Endorses Pfizer Vaccine, 81,000 Doses Headed to Hawaii](#)

Hawaii Tribune-Herald: [Nearly 20,000 visitors have arrived in Hilo since Oct. 15](#)

CNBC: [This Hawaii Program Will Pay Your Airfare to Live and Work Remotely From the Islands](#)

HuffPost: [Hawaii Is Offering Free Round-Trip Flights To Remote Workers](#)

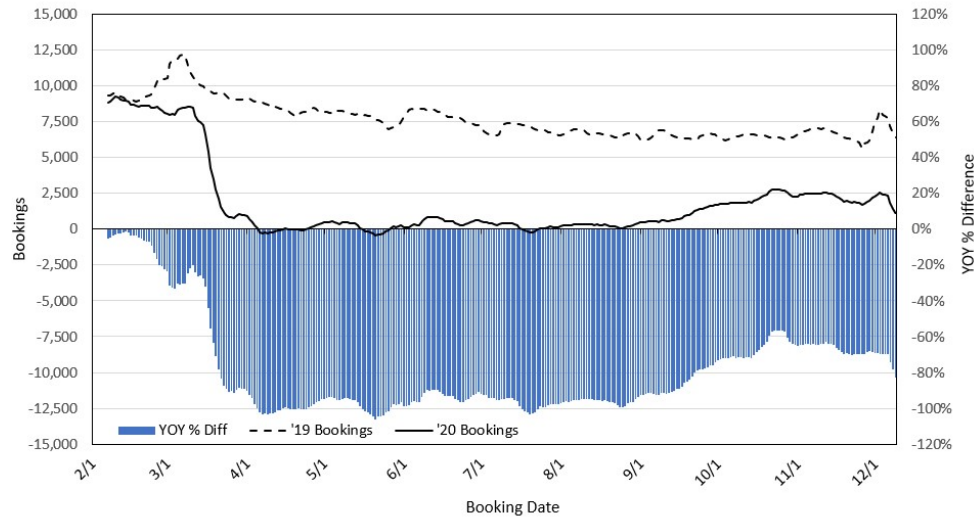
Travel Pulse: [Half of US Travelers Plan to Get the COVID-19 Vaccine](#)

Travel Pulse: [Younger Travelers Looking for a Different Kind of Travel in 2021](#)

DMARGE: [China's 'Second Hawaii' Could Become Australians' Best Bali Alternative](#)

AFAR: [Where We'll Go in 2021—When We Can](#)

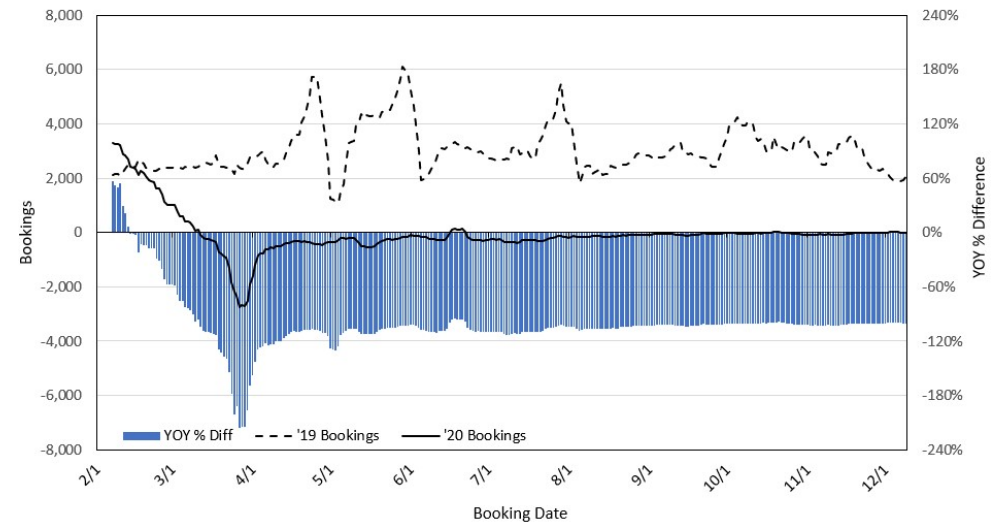
Travel Agency Bookings to Hawaii for Future Arrivals* Based on a 7-day Moving Average, 2020 vs 2019 U.S.



*Future Arrivals refers to all arrivals that are 'future' relative to the referenced booking date.
Source: Global Agency Pro

Update: Dec 9, 2020

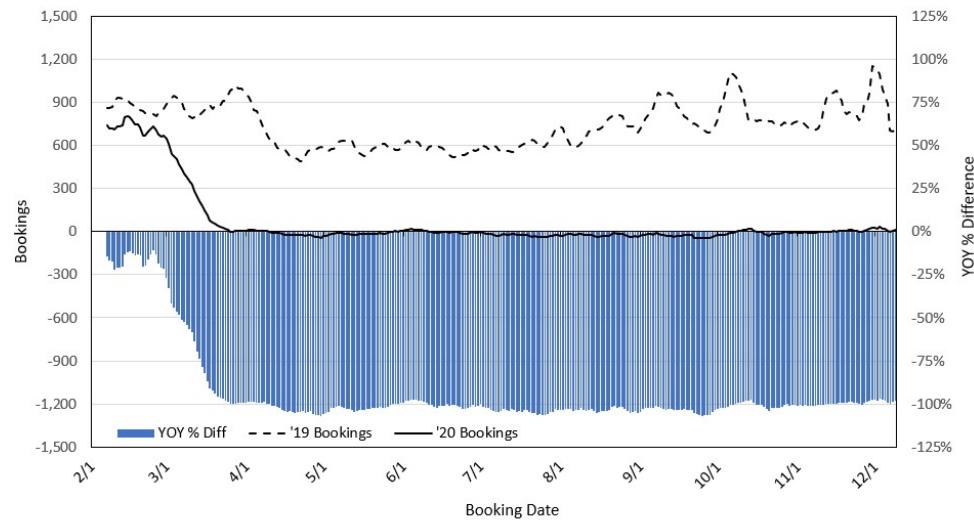
Travel Agency Bookings to Hawaii for Future Arrivals* Based on a 7-day Moving Average, 2020 vs 2019 Japan



*Future Arrivals refers to all arrivals that are 'future' relative to the referenced booking date.
Source: Global Agency Pro

Update: Dec 9, 2020

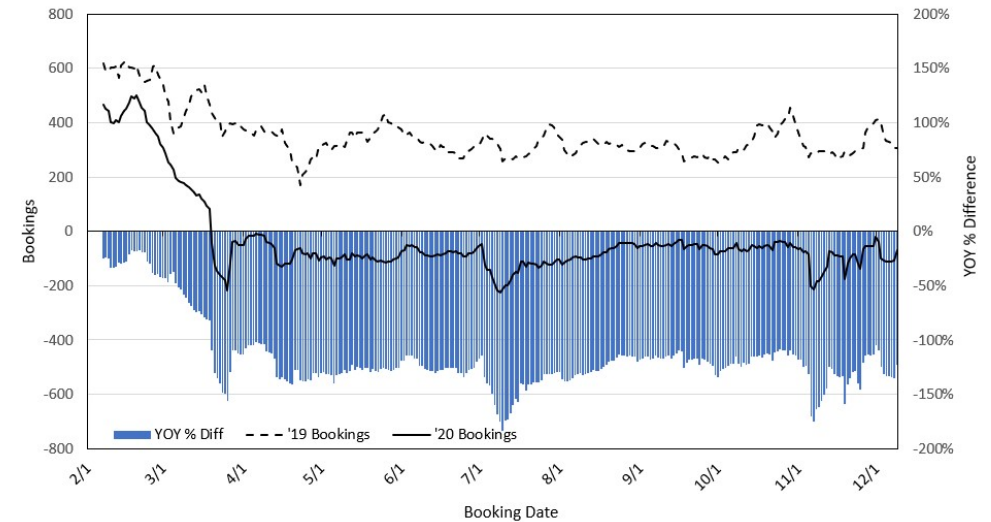
Travel Agency Bookings to Hawaii for Future Arrivals* Based on a 7-day Moving Average, 2020 vs 2019 Canada



*Future Arrivals refers to all arrivals that are 'future' relative to the referenced booking date.
Source: Global Agency Pro

Update: Dec 9, 2020

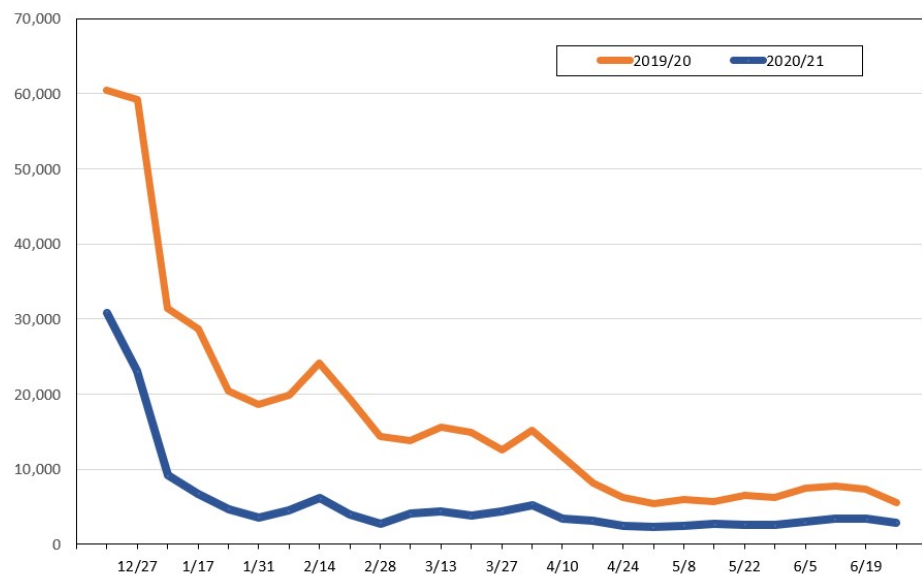
Travel Agency Bookings to Hawaii for Future Arrivals* Based on a 7-day Moving Average, 2020 vs 2019 Australia



*Future Arrivals refers to all arrivals that are 'future' relative to the referenced booking date.
Source: Global Agency Pro

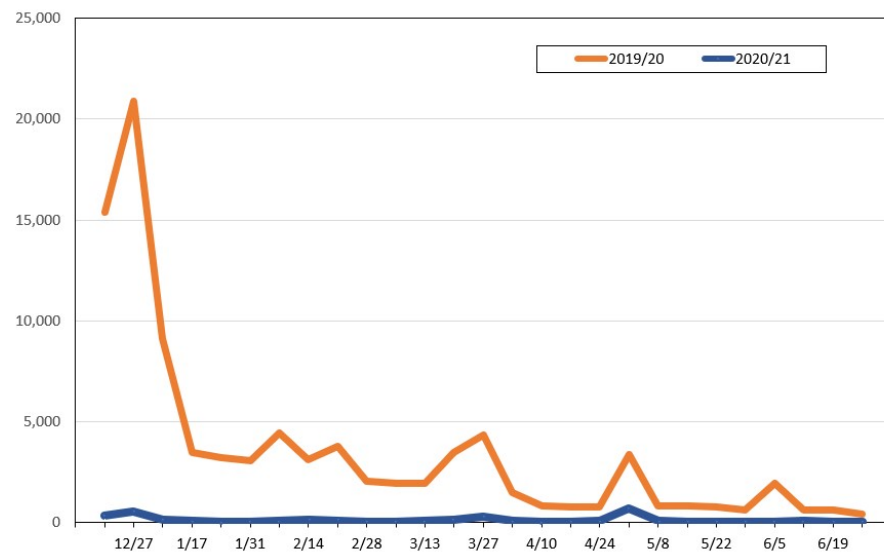
Update: Dec 9, 2020

Travel Agency Weekly Bookings for Future Travel to Hawai'i as of December 9, 2020
U.S.



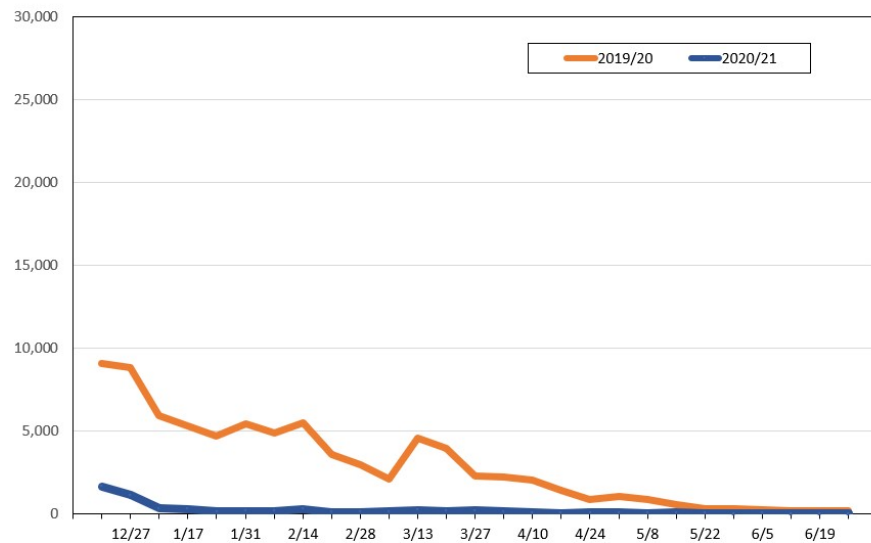
Source: Global Agency Pro, as of December 9, 2020

Travel Agency Weekly Bookings for Future Travel to Hawai'i as of December 9, 2020
Japan



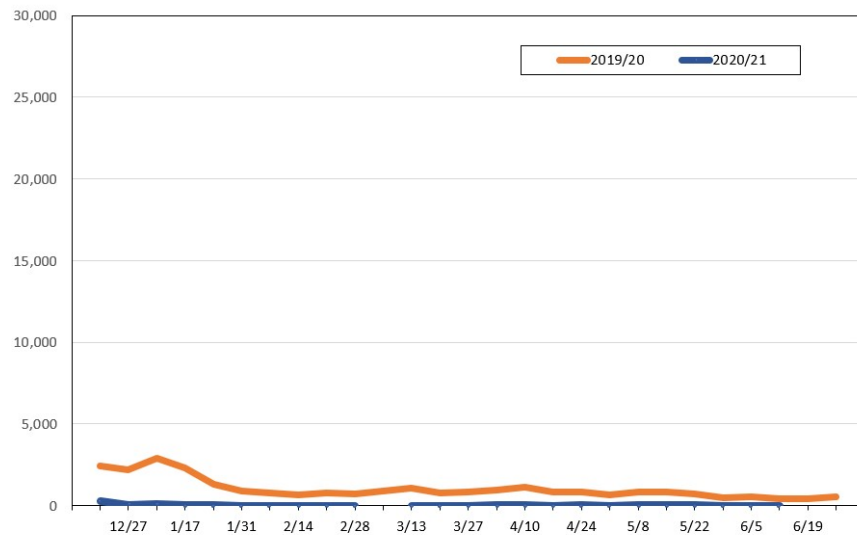
Source: Global Agency Pro, as of December 9, 2020

Travel Agency Weekly Bookings for Future Travel to Hawai'i as of December 9, 2020
Canada



Source: Global Agency Pro, as of December 9, 2020

Travel Agency Weekly Bookings for Future Travel to Hawai'i as of December 9, 2020
Australia



Source: Global Agency Pro, as of December 9, 2020