

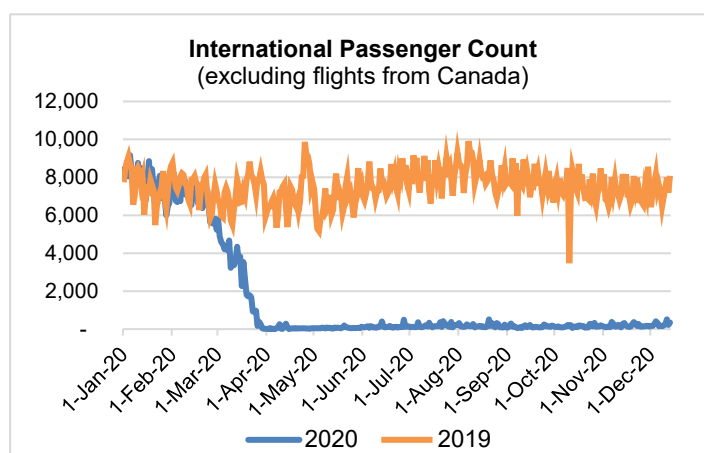
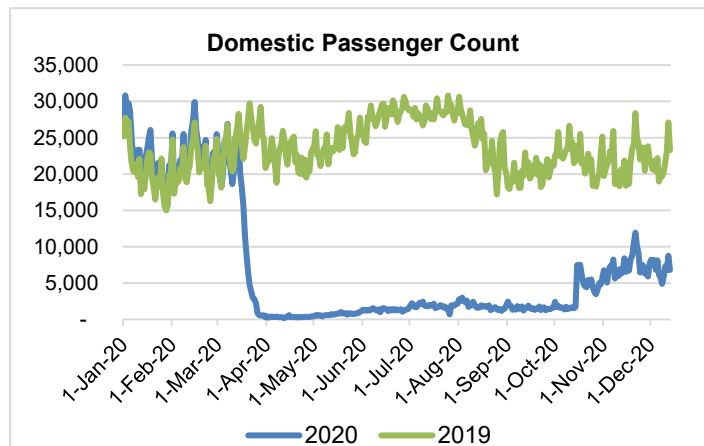
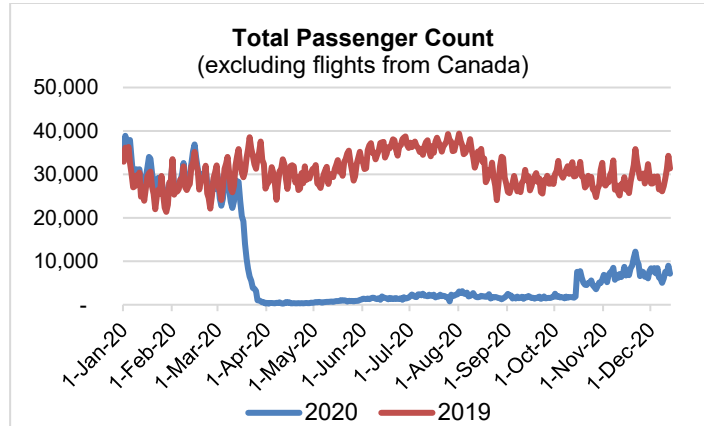
HTA COVID-19 UPDATE

(Issued: 12/14/20 @ 4:30pm)

Reason for Trip by Arrival Airport - Transpacific Screened Passengers as of 12/13/20	Honolulu (HNL)	Kahului (OGG)	Kona (KOA)	Lihue (LIH)	Grand Total
Airline Crew	356	148	86	15	605
Connecting Flight (Transit)	319	36	1	2	358
Corporate Meeting	6	0	0	0	6
Essential Worker	154	29	21	5	209
Honeymoon	16	16	3	0	35
Intended Resident	87	11	18	2	118
Military or Federal Government	66	1	2	1	70
Other	56	11	3	3	73
Other Business	60	33	24	0	117
Pleasure/Vacation	1,278	1,701	754	8	3,741
Returning Resident	1,009	194	152	11	1,366
Sports Event	2	0	0	0	2
To Attend School	1	0	3	0	4
To Get Married	6	1	2	2	11
Transit	0	0	0	0	0
Visiting Friends or Relatives	811	217	223	9	1,260
Grand Total	4,227	2,398	1,292	58	7,975

Source: Safe Travels program developed by the State of Hawaii Office of Enterprise Technology Services

Note: The data is preliminary and subject to change



Daily Passenger Count Table

12/13/2020	Domestic	International	Total
Oahu	3644	344	3988
Maui	2103		2103
Island of Hawaii	1014		1014
Kauai	39		39
State	6800	344	7144

Novel Coronavirus in Hawaii

COVID-19 Positive Cases

Cumulative totals as of 12:00pm on December 14, 2020

Total Confirmed Cases	19,424* (190 new)
Hawaii	1,733
Kauai	134
Lanai	106
Maui	707†
Molokai	22
Oahu	16,423
Out of State	299
Pending	0
Required Hospitalization	1,367‡
Hawaii Deaths	274
Cases in the past 14 days	1,425**

Footnotes for COVID-19 Cases

*As a result of updated information, one case on Oahu was removed from the counts

**Using cases reported in the past 14 days provides a rough approximation of the number of cases currently meeting criteria for isolation. This proxy number for "active cases" resolves classification issues for cases unable to be reached or who are out of jurisdiction, for whom precise release from isolation date may not be possible to determine. It is also not influenced by lags in data entry. (This total does not include Hawaii residents diagnosed outside of Hawaii)

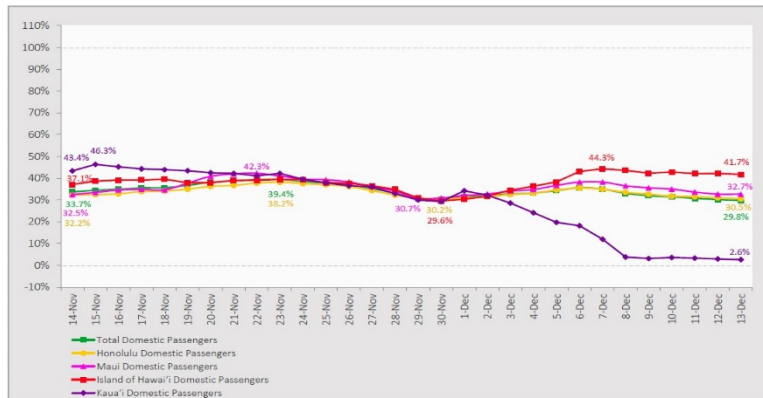
†One case is a Lanai resident whose exposure is on Maui Island and who will be remaining on Maui Island for the interim.

‡Includes Hawaii residents hospitalized out of state.

§Includes cases that meet isolation release criteria (Isolation should be maintained until at least 24 hours after resolution of fever and myalgia without the use of antipyretics OR at least 10 days have passed since symptom onset, whichever is longer). (The cases that have died and one case that has left the jurisdiction have been removed from these counts). Positive cases include confirmed cases, and Hawaii residents and non-residents; data are preliminary and subject to change. Note that CDC provides case counts according to states of residence.

7-Day Domestic by Island Moving Average Daily Passenger Volume

2020 Volume as Percentage of 2019 Volume
Through December 13, 2020



Source: HVCB analysis based on data from DBEDT
Note: Passenger volume figures include both visitors and residents.

Domestic by Island Month-to-Date and Year-to-Date Daily Passenger Volume

2020 Volume versus 2019 Volume
Through December 13, 2020

December 2020 (Month-to-Date through December 13)

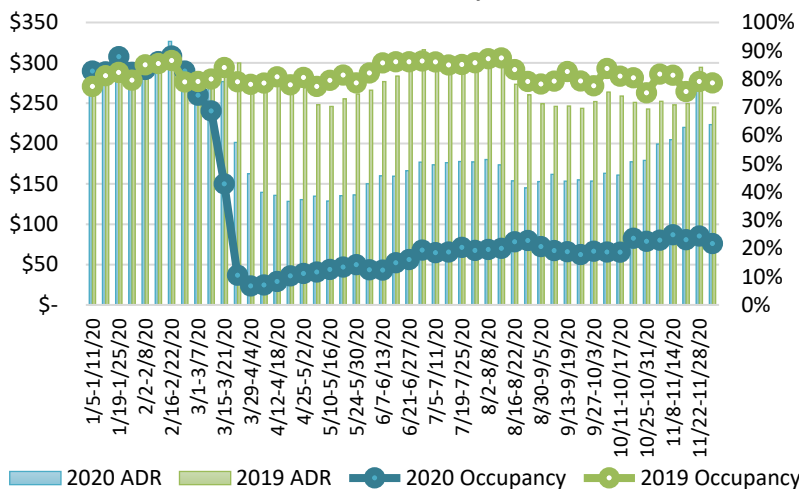
	2020	2019	Volume Change	Percent Change
Honolulu	50,283	153,765	-103,482	-67.3%
Maui County	26,699	71,761	-45,062	-62.8%
Island of Hawai'i	12,513	28,169	-15,656	-55.6%
Kaua'i	1,659	22,503	-20,844	-92.6%
Total	91,154	276,198	-185,044	-67.0%

2020 (Year-to-Date through December 13)

	2020	2019	Volume Change	Percent Change
Honolulu	1,407,001	4,366,129	-2,959,128	-67.8%
Maui County	560,459	2,117,362	-1,556,903	-73.5%
Island of Hawai'i	276,763	918,488	-641,725	-69.9%
Kaua'i	183,941	722,358	-538,417	-74.5%
Total	2,428,164	8,124,337	-5,696,174	-70.1%

Source: HVCB analysis based on data from DBEDT
Note: Passenger volume figures include both visitors and residents. Total includes other international passengers. 2020 includes one additional day due to Leap Year (February 29th, 2020).

State of Hawai'i Hotel Performance by Week - 2020 vs 2019



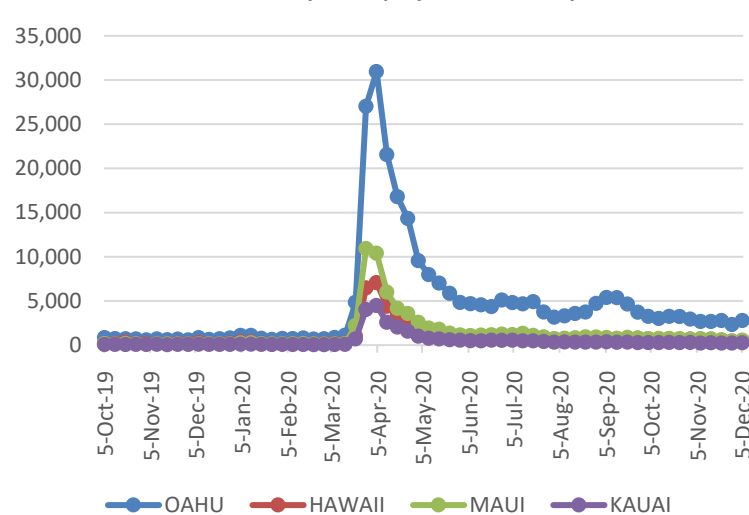
Source: STR, Inc. © Copyright 2020 Hawai'i Tourism Authority

Hawaii Hotel Performance Info:

For the week of November 29 – December 05, 2020

	Occupancy	ADR	RevPAR
State of Hawaii	21.7%	\$ 223.44	\$ 48.53
Oahu	21.2%	\$ 162.06	\$ 34.43
Maui County	22.8%	\$ 345.70	\$ 78.85
Kauai County	21.5%	\$ 204.63	\$ 43.94
Island of Hawaii	21.5%	\$ 213.53	\$ 45.99

2020 Initial Weekly Unemployment Claims by Island



Weekly Unemployment Initial Claims: December 05, 2020

State of Hawaii	4,291
C&C of Oahu	2,780
Hawaii County	512
Maui County	552
Kauai County	267
Agent (filed in Hawaii against another state)	180

News Highlights

December 14, 2020

Honolulu Star Advertiser: [Hawaii sees 3 more coronavirus deaths and 90 new infections; Honolulu prison cluster grows](#)

Honolulu Star Advertiser: [More Hawaii residents open to restarting tourism, survey finds](#)

KHON2: [Kauai continues to see community spread COVID-19 cases after opt-out](#)

West Hawaii Today: [Slow climb ahead for Hawaii economy, even with vaccine](#)

Big Island Now: [2 District COVID-19 Testing Sites Open Today](#)

The Garden Island: [COVID-19 vaccine: The science and the heart](#)

Maui Now: [Letters: With COVID-19 Cases Rising on Maui, Differing Opinions About What to Do](#)

Travel Pulse: [Which Airlines Offer Free COVID-19 Travel Insurance Coverage?](#)

The Points Guy: [I just traveled to Hawaii: Here's what it's like for tourists right now](#)

CNN: [What it's like to travel to Hawaii right now](#)

Helpful Resources

Department of Health
<https://hawaiiocovid19.com/>

Department of Health

<https://health.hawaii.gov/docd/advisories/novel-coronavirus-2019>

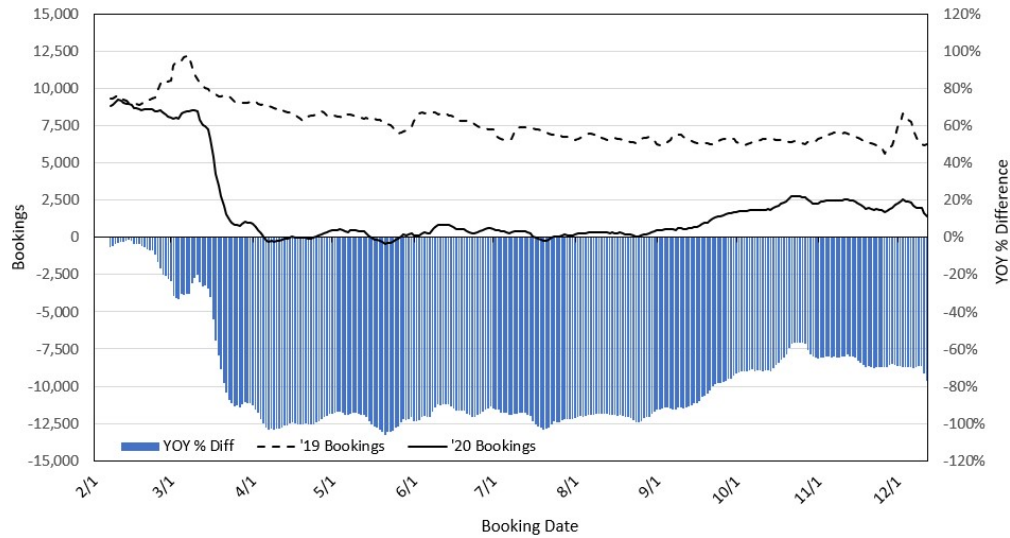
Dept. of Business, Economic Development & Tourism

<https://dbedt.hawaii.gov/economic/covid19/>

Department of Transportation

<https://hidot.hawaii.gov/coronavirus/>

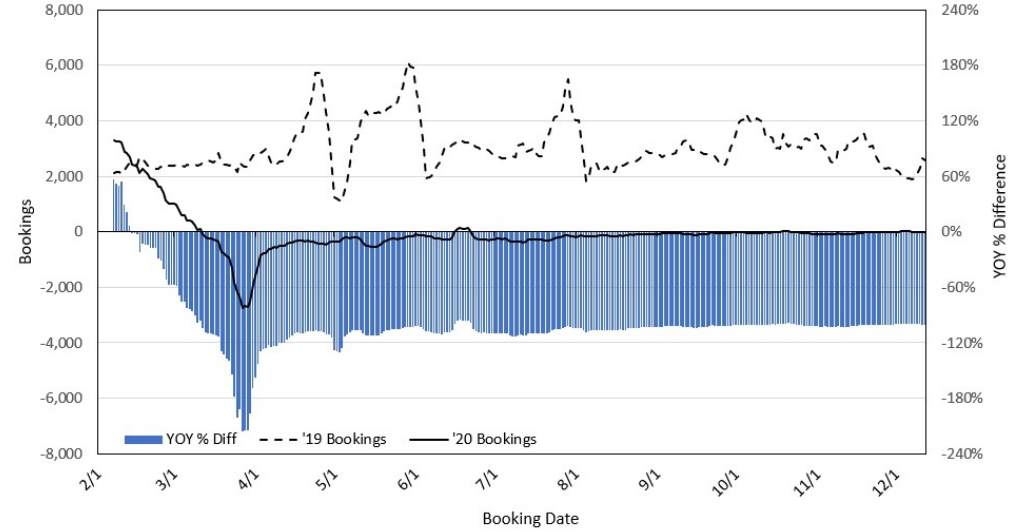
Travel Agency Bookings to Hawaii for Future Arrivals* Based on a 7-day Moving Average, 2020 vs 2019 U.S.



*Future Arrivals refers to all arrivals that are 'future' relative to the referenced booking date.
Source: Global Agency Pro

Update: Dec 12, 2020

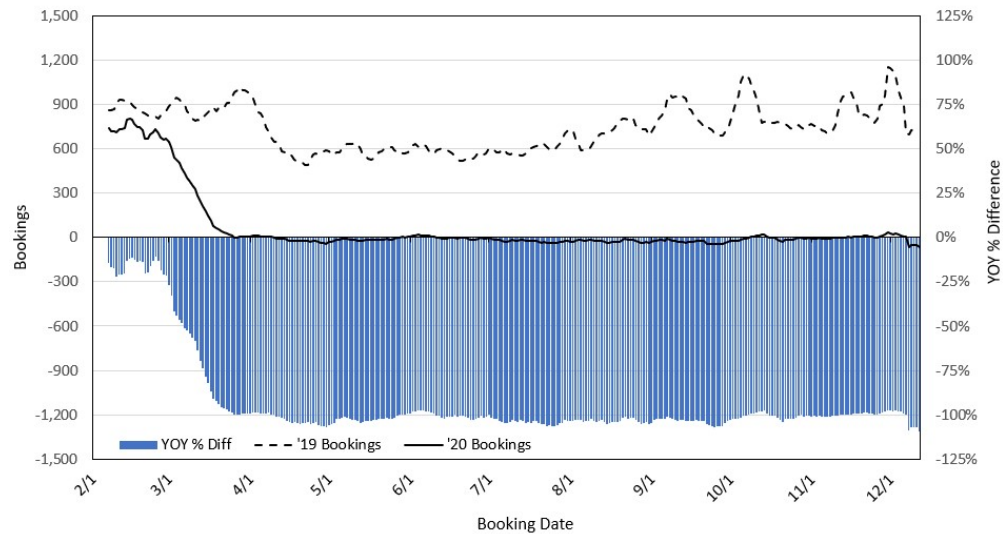
Travel Agency Bookings to Hawaii for Future Arrivals* Based on a 7-day Moving Average, 2020 vs 2019 Japan



*Future Arrivals refers to all arrivals that are 'future' relative to the referenced booking date.
Source: Global Agency Pro

Update: Dec 12, 2020

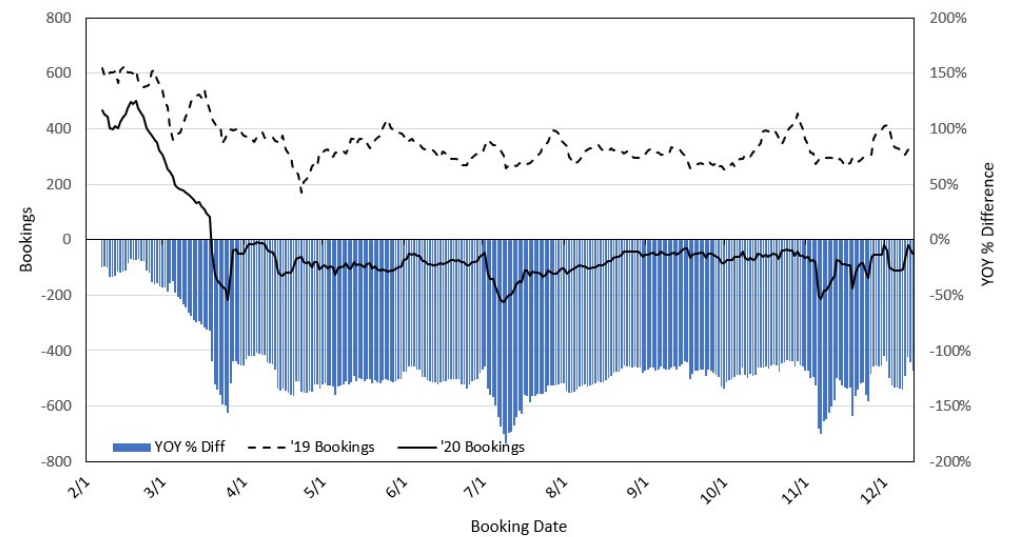
Travel Agency Bookings to Hawaii for Future Arrivals* Based on a 7-day Moving Average, 2020 vs 2019 Canada



*Future Arrivals refers to all arrivals that are 'future' relative to the referenced booking date.
Source: Global Agency Pro

Update: Dec 12, 2020

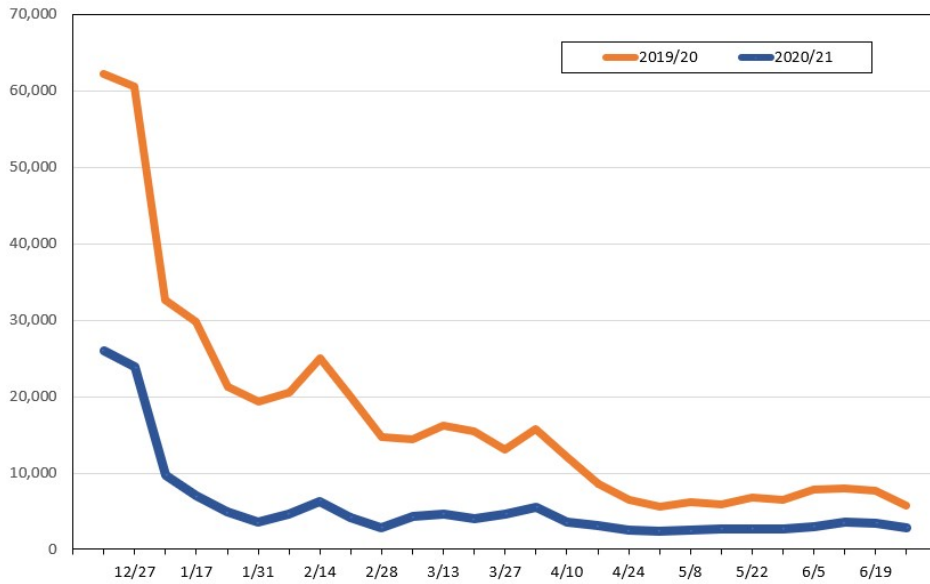
Travel Agency Bookings to Hawaii for Future Arrivals* Based on a 7-day Moving Average, 2020 vs 2019 Australia



*Future Arrivals refers to all arrivals that are 'future' relative to the referenced booking date.
Source: Global Agency Pro

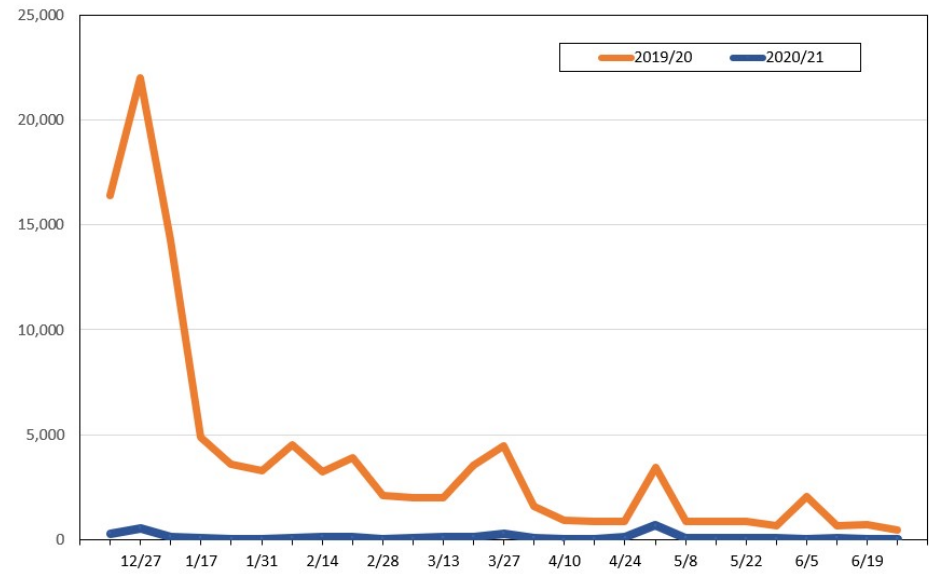
Update: Dec 12, 2020

Travel Agency Weekly Bookings for Future Travel to Hawai'i as of December 12, 2020
U.S.



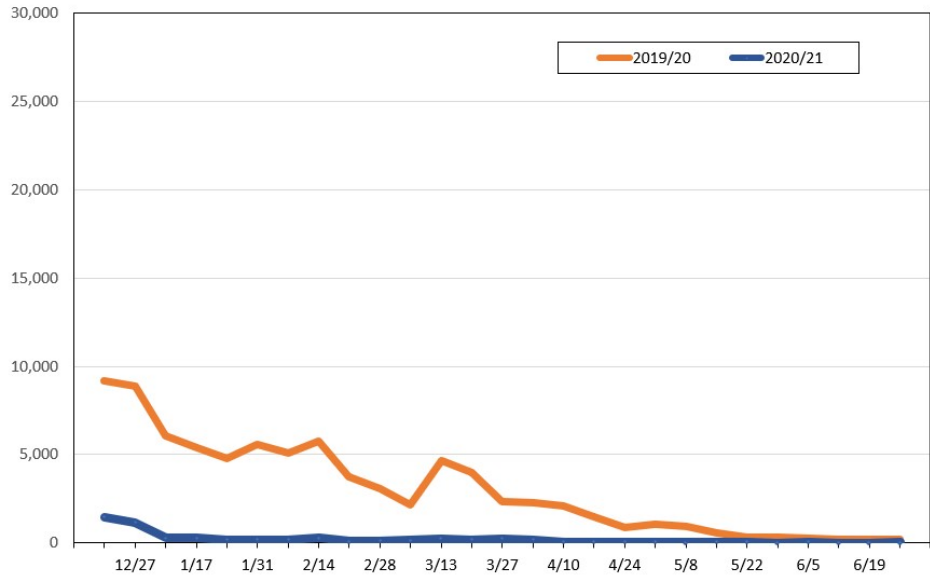
Source: Global Agency Pro, as of December 12, 2020

Travel Agency Weekly Bookings for Future Travel to Hawai'i as of December 12, 2020
Japan



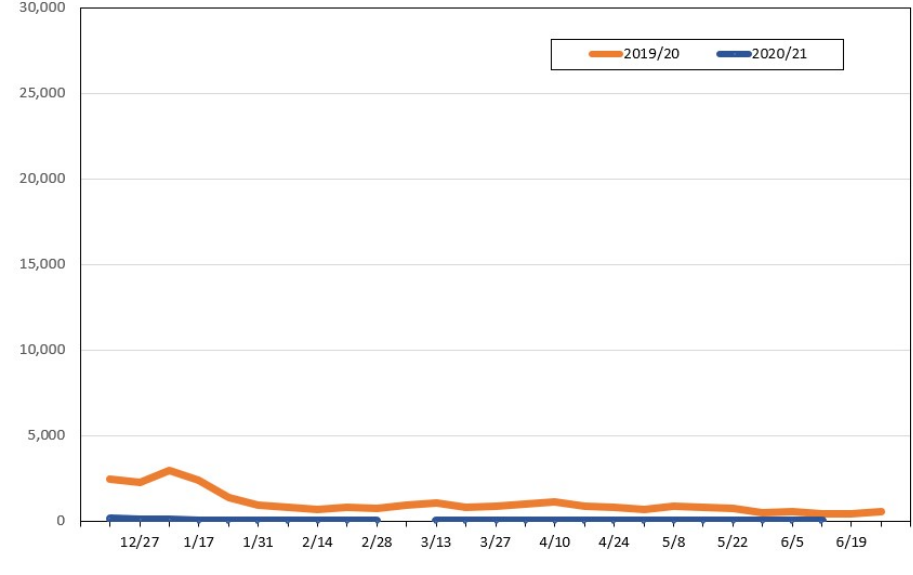
Source: Global Agency Pro, as of December 12, 2020

Travel Agency Weekly Bookings for Future Travel to Hawai'i as of December 12, 2020
Canada



Source: Global Agency Pro, as of December 12, 2020

Travel Agency Weekly Bookings for Future Travel to Hawai'i as of December 12, 2020
Australia



Source: Global Agency Pro, as of December 12, 2020