

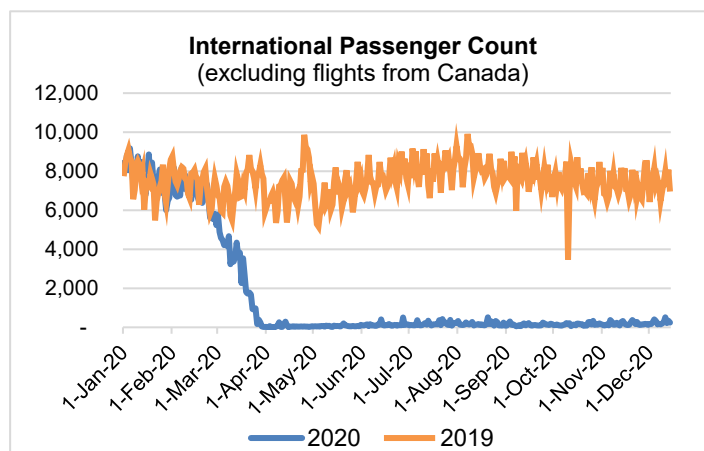
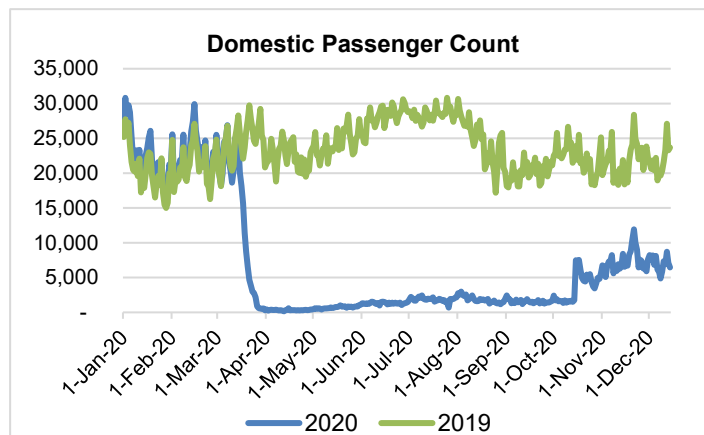
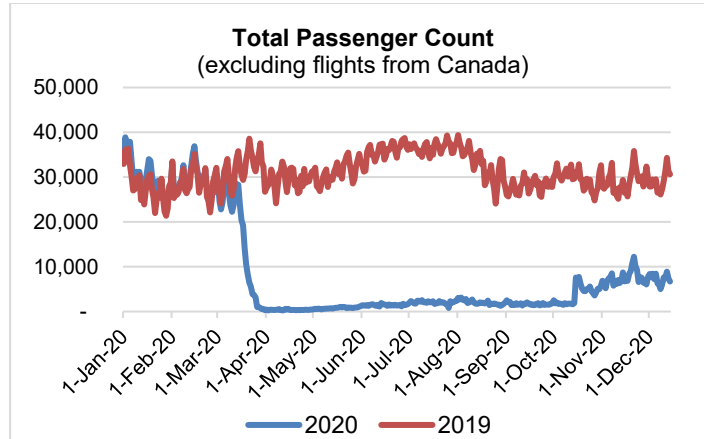
HTA COVID-19 UPDATE

(Issued: 12/15/20 @ 4:30pm)

| Reason for Trip by Arrival Airport - Transpacific Screened Passengers as of 12/14/20 | Honolulu (HNL) | Kahului (OGG) | Kona (KOA) | Lihue (LIH) | Grand Total |
|--|----------------|---------------|--------------|-------------|--------------|
| Airline Crew | 363 | 137 | 67 | 11 | 578 |
| Connecting Flight (Transit) | 363 | 24 | 5 | 1 | 393 |
| Corporate Meeting | 5 | 1 | 0 | 0 | 6 |
| Essential Worker | 128 | 22 | 19 | 4 | 173 |
| Honeymoon | 15 | 17 | 1 | 0 | 33 |
| Incentive Trip | 2 | 0 | 0 | 0 | 2 |
| Intended Resident | 103 | 27 | 21 | 1 | 152 |
| Military or Federal Government | 59 | 0 | 0 | 1 | 60 |
| Other | 41 | 16 | 9 | 0 | 66 |
| Other Business | 62 | 35 | 14 | 1 | 112 |
| Pleasure/Vacation | 1,172 | 1,203 | 526 | 1 | 2,902 |
| Returning Resident | 1,187 | 180 | 163 | 24 | 1,554 |
| Sports Event | 3 | 0 | 0 | 0 | 3 |
| To Attend School | 19 | 3 | 0 | 0 | 22 |
| To Get Married | 3 | 3 | 0 | 0 | 6 |
| Visiting Friends or Relatives | 1,162 | 228 | 192 | 19 | 1,601 |
| Grand Total | 4,687 | 1,896 | 1,017 | 63 | 7,663 |

Source: Safe Travels program developed by the State of Hawaii Office of Enterprise Technology Services

Note: The data is preliminary and subject to change



Daily Passenger Count Table

| 12/14/2020 | Domestic | International | Total |
|------------------|----------|---------------|-------|
| Oahu | 3910 | 239 | 4149 |
| Maui | 1591 | | 1591 |
| Island of Hawaii | 915 | | 915 |
| Kauai | 48 | | 48 |
| State | 6464 | 239 | 6703 |

Novel Coronavirus in Hawaii

COVID-19 Positive Cases

Cumulative totals as of 12:00pm on December 15, 2020

| Total Confirmed Cases | 19,480* (57 new) |
|---------------------------|------------------|
| Hawaii | 1,743 |
| Kauai | 134 |
| Lanai | 106 |
| Maui | 714† |
| Molokai | 22 |
| Oahu | 16,458 |
| Out of State | 303 |
| Pending | 0 |
| Required Hospitalization | 1,374‡ |
| Hawaii Deaths | 274 |
| Cases in the past 14 days | 1,435** |

Footnotes for COVID-19 Cases

*As a result of updated information, one case on Maui was removed from the counts.

**Using cases reported in the past 14 days provides a rough approximation of the number of cases currently meeting criteria for isolation. This proxy number for "active cases" resolves classification issues for cases unable to be reached or who are out of jurisdiction, for whom precise release from isolation date may not be possible to determine. It is also not influenced by lags in data entry. (This total does not include Hawaii residents diagnosed outside of Hawaii)

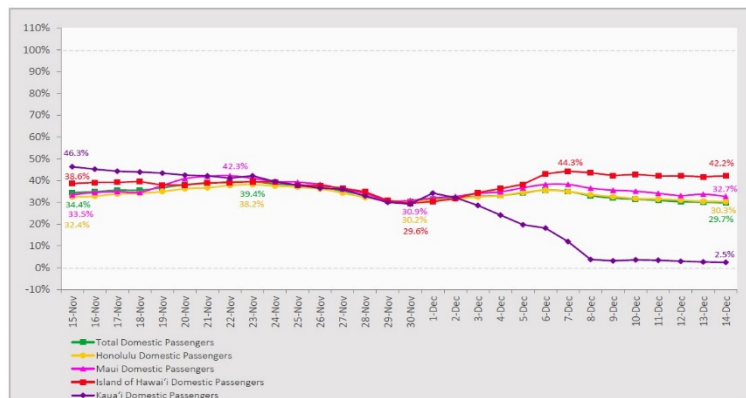
†One case is a Lanai resident whose exposure is on Maui Island and who will be remaining on Maui Island for the interim.

‡Includes Hawaii residents hospitalized out of state.

§Includes cases that meet isolation release criteria (Isolation should be maintained until at least 24 hours after resolution of fever and myalgia without the use of antipyretics OR at least 10 days have passed since symptom onset, whichever is longer). (The cases that have died and one case that has left the jurisdiction have been removed from these counts). Positive cases include confirmed cases, and Hawaii residents and non-residents; data are preliminary and subject to change. Note that CDC provides case counts according to states of residence.

7-Day Domestic by Island Moving Average Daily Passenger Volume

2020 Volume as Percentage of 2019 Volume
Through December 14, 2020



Source: HVCB analysis based on data from DBEDT
Note: Passenger volume figures include both visitors and residents.

Domestic by Island Month-to-Date and Year-to-Date Daily Passenger Volume

2020 Volume versus 2019 Volume
Through December 14, 2020

December 2020 (Month-to-Date through December 14)

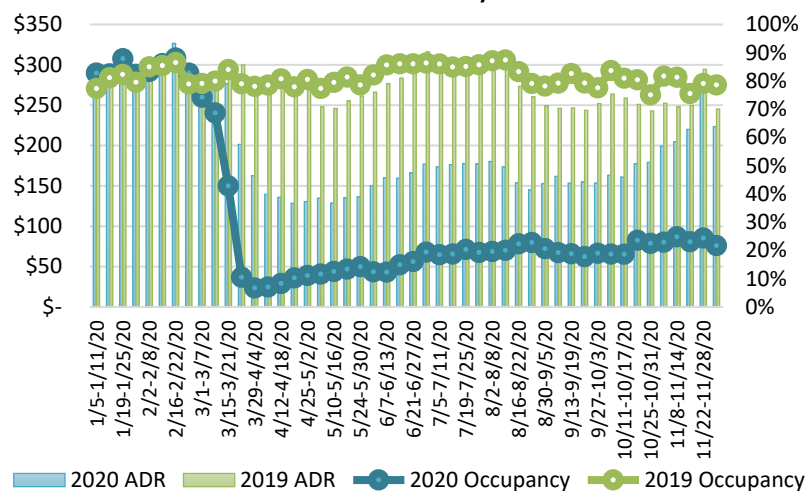
| | 2020 | 2019 | Volume Change | Percent Change |
|-------------------|---------------|----------------|-----------------|----------------|
| Honolulu | 54,193 | 166,925 | -112,732 | -67.5% |
| Maui County | 28,732 | 79,536 | -50,804 | -63.9% |
| Island of Hawai'i | 13,428 | 31,374 | -17,946 | -57.2% |
| Kauai | 1,718 | 25,457 | -23,739 | -93.3% |
| Total | 98,071 | 303,292 | -205,221 | -67.7% |

2020 (Year-to-Date through December 14)

| | 2020 | 2019 | Volume Change | Percent Change |
|-------------------|------------------|------------------|-------------------|----------------|
| Honolulu | 1,410,911 | 4,379,289 | -2,968,378 | -67.8% |
| Maui County | 562,492 | 2,125,137 | -1,562,645 | -73.5% |
| Island of Hawai'i | 277,678 | 921,693 | -644,015 | -69.9% |
| Kauai | 184,000 | 725,312 | -541,312 | -74.6% |
| Total | 2,435,081 | 8,151,431 | -5,716,351 | -70.1% |

Source: HVCB analysis based on data from DBEDT
Note: Passenger volume figures include both visitors and residents. Total includes other international passengers. 2020 includes one additional day due to Leap Year (February 29th, 2020).

State of Hawai'i Hotel Performance by Week - 2020 vs 2019



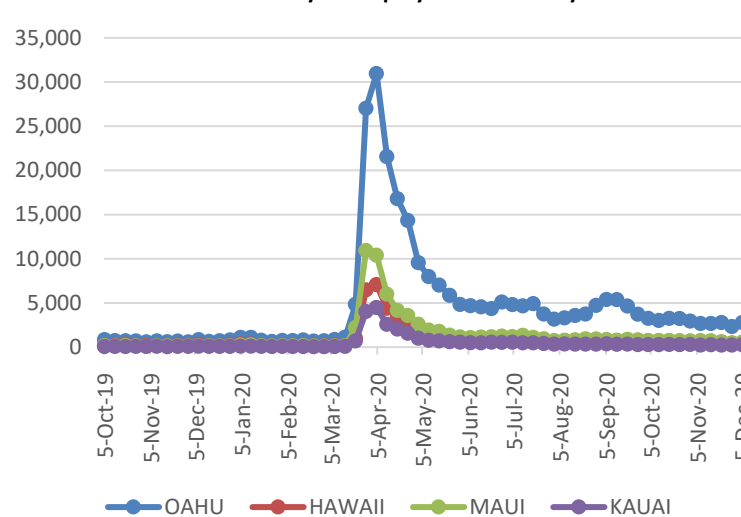
Source: STR, Inc. © Copyright 2020 Hawai'i Tourism Authority

Hawaii Hotel Performance Info:

For the week of November 29 – December 05, 2020

| | Occupancy | ADR | RevPAR |
|-------------------------|-----------|-----------|----------|
| State of Hawaii | 21.7% | \$ 223.44 | \$ 48.53 |
| Oahu | 21.2% | \$ 162.06 | \$ 34.43 |
| Maui County | 22.8% | \$ 345.70 | \$ 78.85 |
| Kauai County | 21.5% | \$ 204.63 | \$ 43.94 |
| Island of Hawaii | 21.5% | \$ 213.53 | \$ 45.99 |

2020 Initial Weekly Unemployment Claims by Island



Weekly Unemployment Initial Claims: December 05, 2020

| | |
|--|-------|
| State of Hawaii | 4,291 |
| C&C of Oahu | 2,780 |
| Hawaii County | 512 |
| Maui County | 552 |
| Kauai County | 267 |
| Agent (filed in Hawaii against another state) | 180 |

News Highlights

December 15, 2020

Honolulu Civil Beat: [Surveillance Test Study Shows Few COVID-19 Positives During Safe Travels](#)

Honolulu Civil Beat: [Kauai Businesses: 'We Can't Survive' Without Travel](#)

West Hawaii Today: [Hawaii Island hospitals expect to receive first shipments of COVID-19 vaccine next week](#)

Hawaii Tribune-Herald: [Uptick in COVID cases follows Thanksgiving holiday](#)

The Garden Island: [No new cases Monday, officials urging continued vigilance](#)

Conde Nast Traveler: [State Travel Restrictions During COVID-19: A Complete Guide](#)

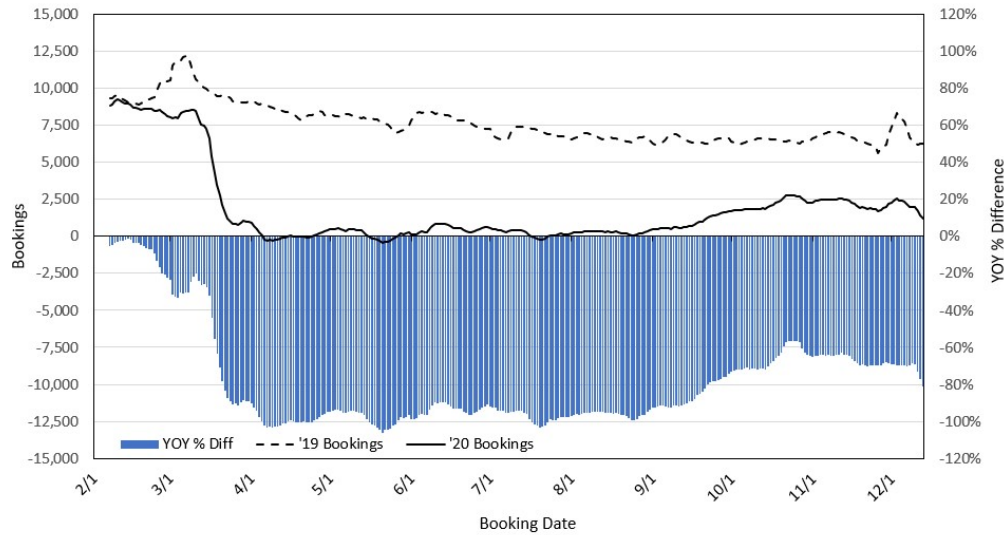
Travel Pulse: [Industry Groups Say International Travel Can Safely Restart Now](#)

Travel Weekly: [Holiday travel retreats in the age of Covid](#)

Vox: [Tech billionaire Larry Ellison has moved to Hawaii](#)

SF Chronicle: [Bay Area workers are going remote from Hawaii, and some aren't coming back](#)

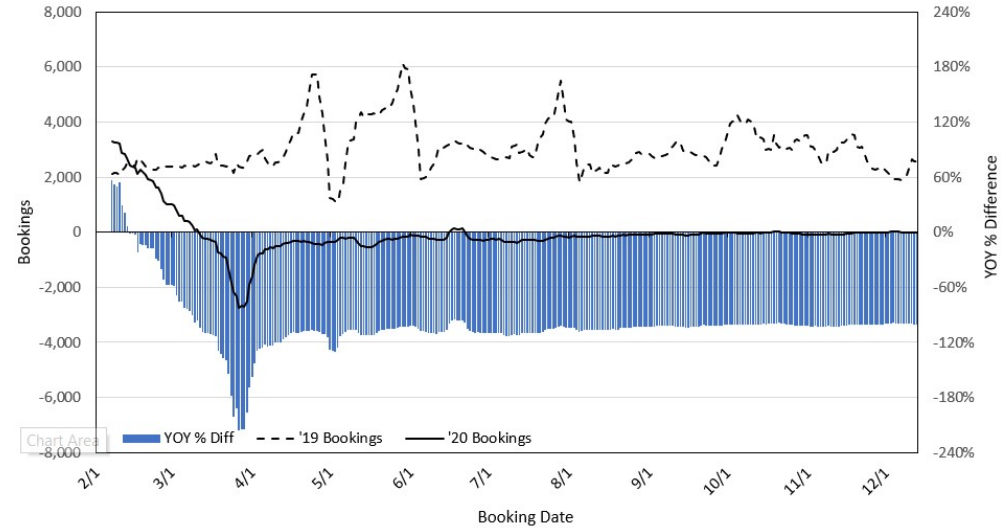
Travel Agency Bookings to Hawaii for Future Arrivals* Based on a 7-day Moving Average, 2020 vs 2019 U.S.



*Future Arrivals refers to all arrivals that are 'future' relative to the referenced booking date.
Source: Global Agency Pro

Update: Dec 13, 2020

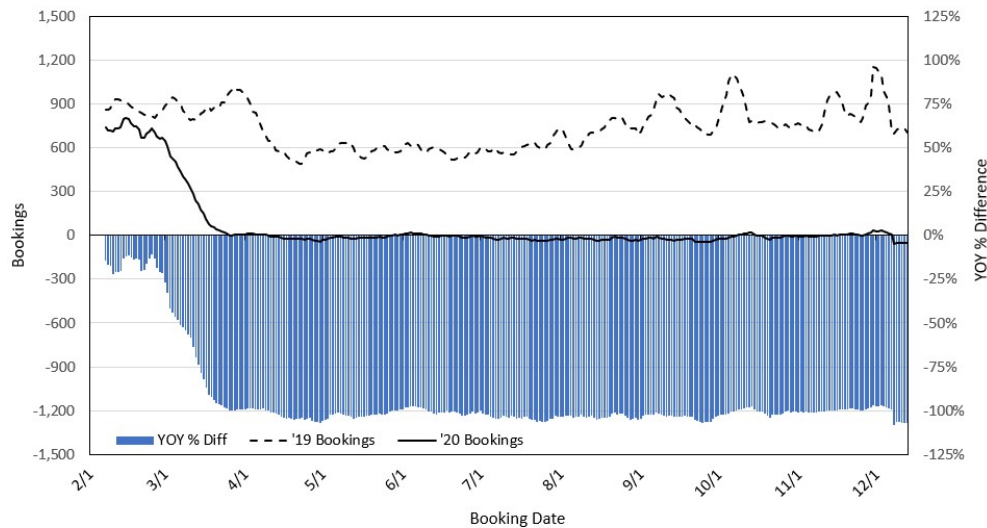
Travel Agency Bookings to Hawaii for Future Arrivals* Based on a 7-day Moving Average, 2020 vs 2019 Japan



*Future Arrivals refers to all arrivals that are 'future' relative to the referenced booking date.
Source: Global Agency Pro

Update: Dec 13, 2020

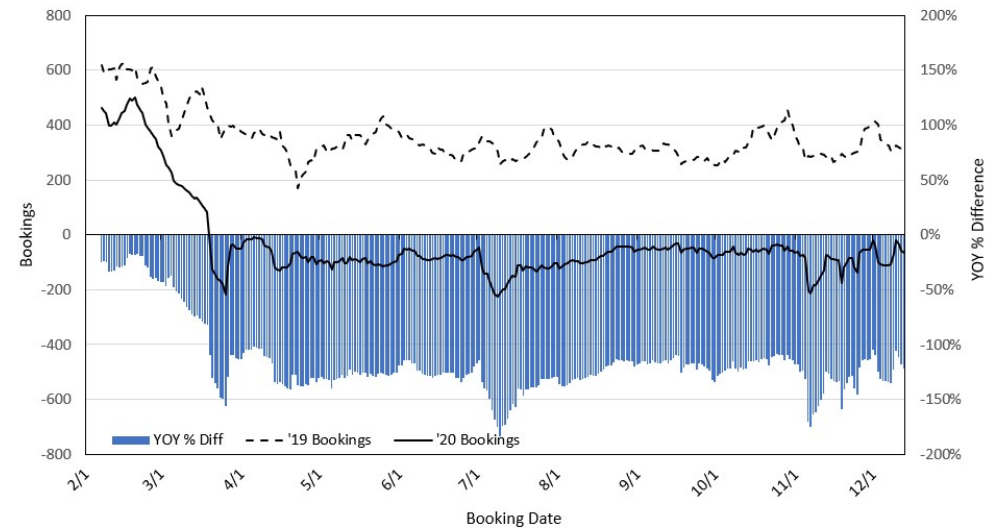
Travel Agency Bookings to Hawaii for Future Arrivals* Based on a 7-day Moving Average, 2020 vs 2019 Canada



*Future Arrivals refers to all arrivals that are 'future' relative to the referenced booking date.
Source: Global Agency Pro

Update: Dec 13, 2020

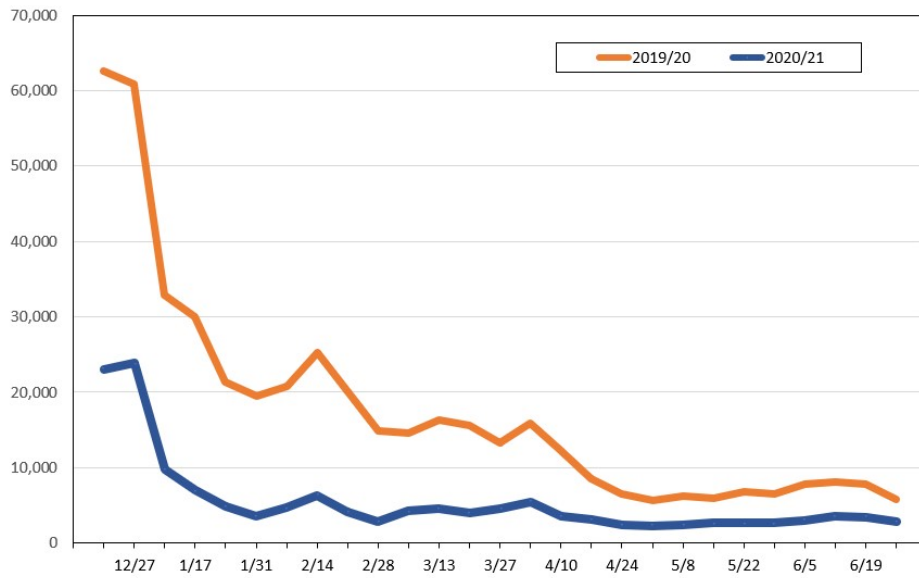
Travel Agency Bookings to Hawaii for Future Arrivals* Based on a 7-day Moving Average, 2020 vs 2019 Australia



*Future Arrivals refers to all arrivals that are 'future' relative to the referenced booking date.
Source: Global Agency Pro

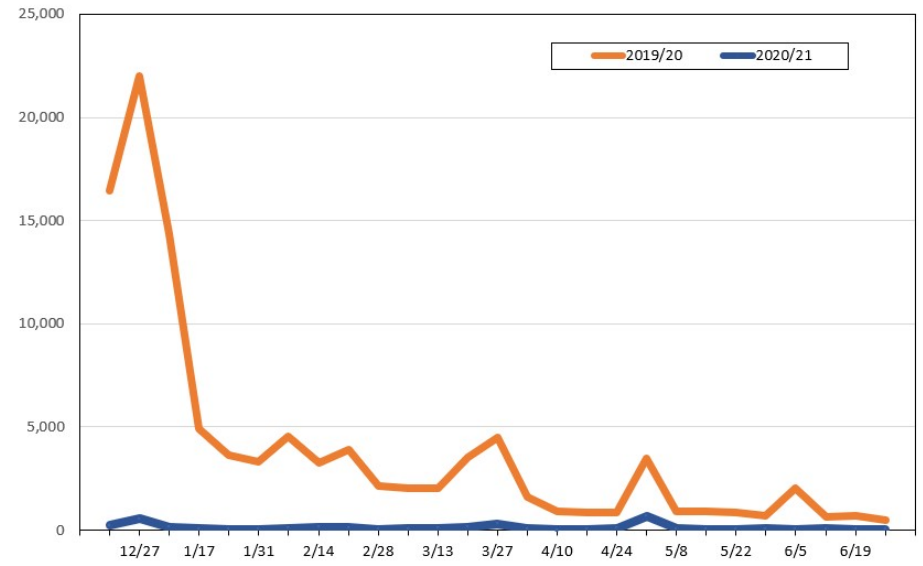
Update: Dec 13, 2020

Travel Agency Weekly Bookings for Future Travel to Hawai'i as of December 13, 2020
U.S.



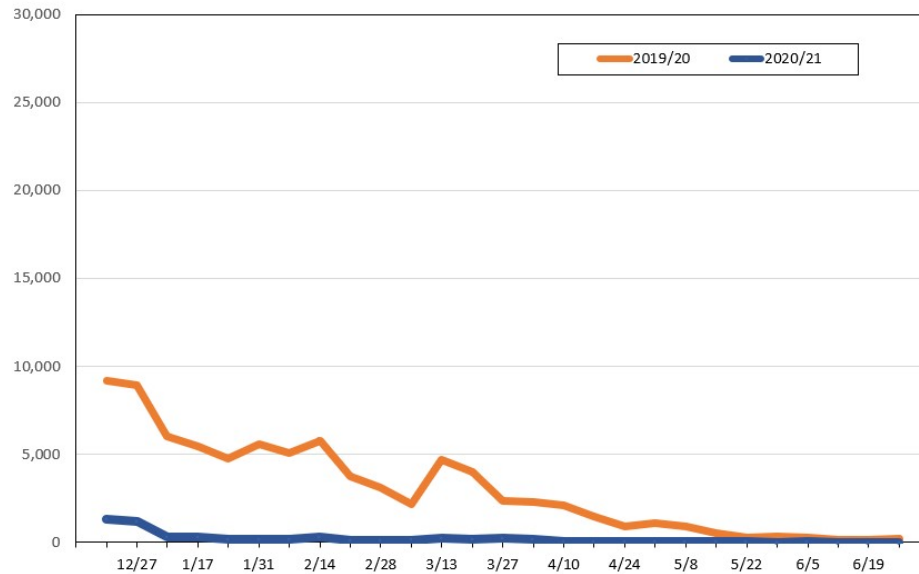
Source: Global Agency Pro, as of December 13, 2020

Travel Agency Weekly Bookings for Future Travel to Hawai'i as of December 13, 2020
Japan



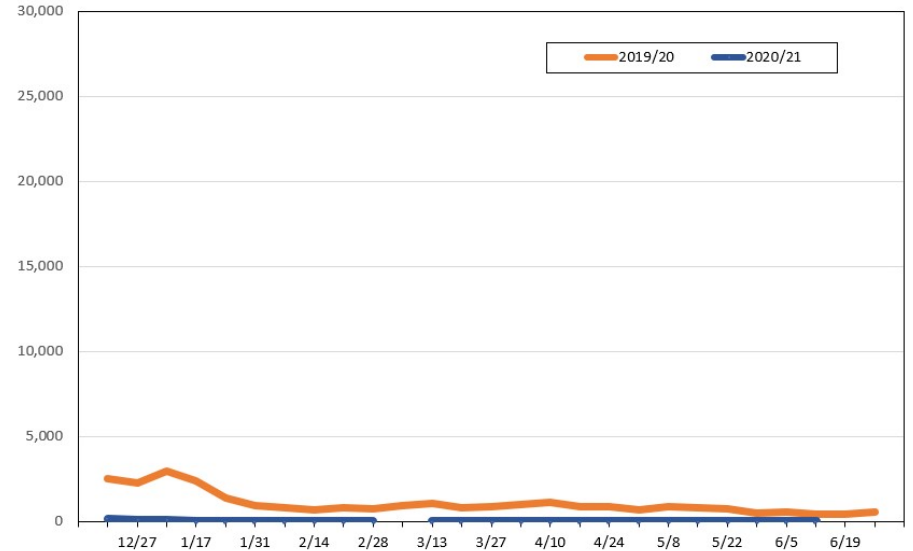
Source: Global Agency Pro, as of December 13, 2020

Travel Agency Weekly Bookings for Future Travel to Hawai'i as of December 13, 2020
Canada



Source: Global Agency Pro, as of December 13, 2020

Travel Agency Weekly Bookings for Future Travel to Hawai'i as of December 13, 2020
Australia



Source: Global Agency Pro, as of December 13, 2020