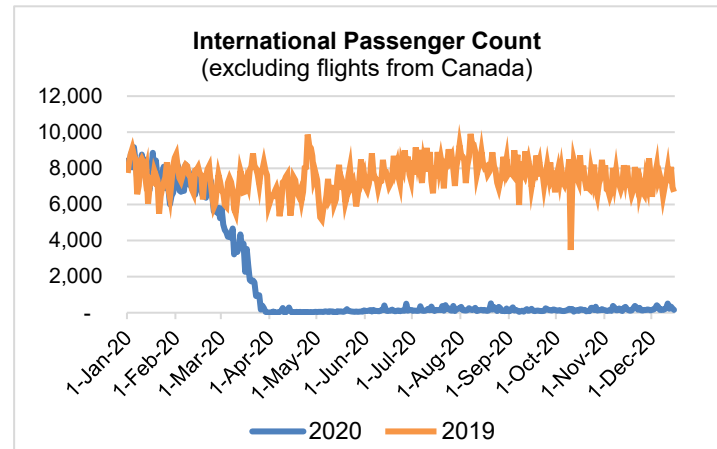
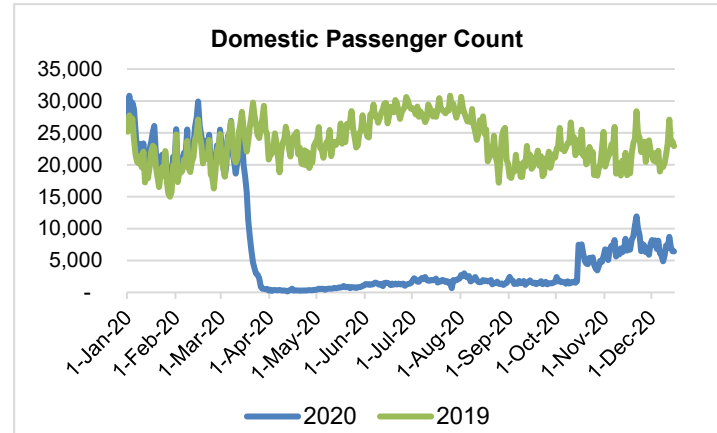
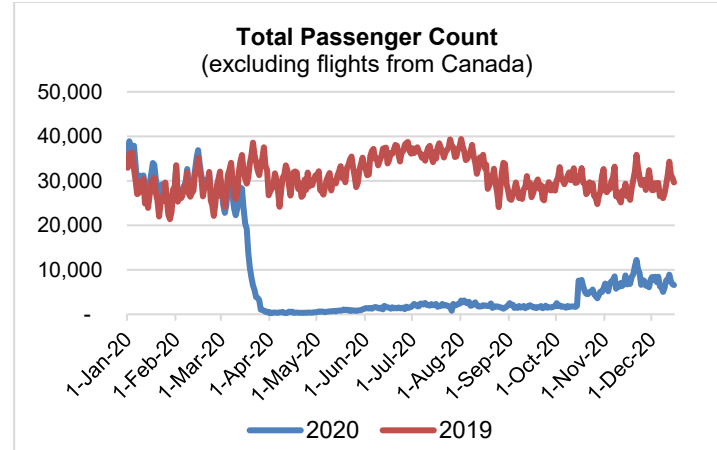


# HTA COVID-19 UPDATE

(Issued: 12/16/20 @ 4:30pm)

Reason for Trip by Arrival Airport - Transpacific Screened Passengers as of 12/15/20	Honolulu (HNL)	Kahului (OGG)	Kona (KOA)	Lihue (LIH)	Grand Total
Airline Crew	348	127	64	8	547
Connecting Flight (Transit)	297	4	0	2	303
Corporate Meeting	6	0	0	0	6
Essential Worker	81	28	5	1	115
Honeymoon	9	1	2	0	12
Incentive Trip	0	0	1	0	1
Intended Resident	95	26	27	7	155
Military or Federal Government	64	1	0	0	65
Other	69	14	13	1	97
Other Business	47	18	12	0	77
Pleasure/Vacation	1,226	1,213	583	9	3,031
Returning Resident	883	160	114	36	1,193
Sports Event	1	0	0	0	1
To Attend School	3	0	1	0	4
To Get Married	10	4	0	0	14
Transit	2	0	0	0	2
Visiting Friends or Relatives	1,082	291	231	22	1,626
<b>Grand Total</b>	<b>4,223</b>	<b>1,887</b>	<b>1,053</b>	<b>86</b>	<b>7,249</b>

**Source:** Safe Travels program developed by the State of Hawaii Office of Enterprise Technology Services  
**Note:** The data is preliminary and subject to change



**Daily Passenger Count Table**

12/15/2020	Domestic	International	Total
Oahu	3713	157	4149
Maui	1668		1591
Island of Hawaii	971		915
Kauai	72		48
State	6424	157	6703

## Novel Coronavirus in Hawaii

### COVID-19 Positive Cases

Cumulative totals as of 12:00pm on December 16, 2020

Total Confirmed Cases	19,590* (110 new)
Hawaii	1,748
Kauai	134
Lanai	106
Maui	728†
Molokai	22
Oahu	16,543
Out of State	309
Pending	0
Required Hospitalization	1,382‡
Hawaii Deaths	278
Cases in the past 14 days	1,470**

### Footnotes for COVID-19 Cases

\*As a result of updated information, one case on Maui was removed from the counts.

\*\*Using cases reported in the past 14 days provides a rough approximation of the number of cases currently meeting criteria for isolation. This proxy number for "active cases" resolves classification issues for cases unable to be reached or who are out of jurisdiction, for whom precise release from isolation date may not be possible to determine. It is also not influenced by lags in data entry. (This total does not include Hawaii residents diagnosed outside of Hawaii)

†One case is a Lanai resident whose exposure is on Maui Island and who will be remaining on Maui Island for the interim.

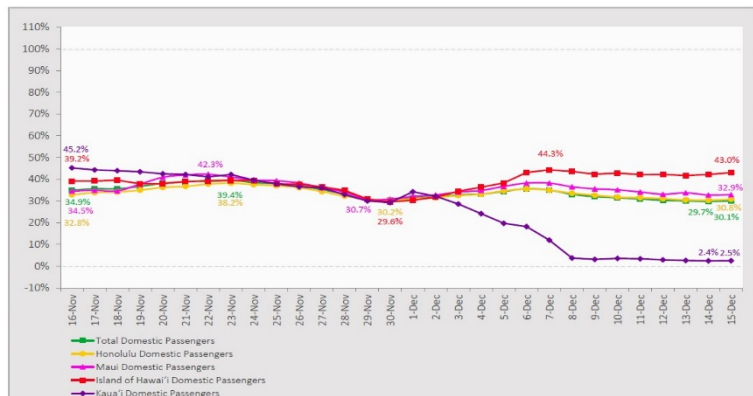
‡Includes Hawaii residents hospitalized out of state.

§Includes cases that meet isolation release criteria (Isolation should be maintained until at least 24 hours after resolution of fever and myalgia without the use of antipyretics OR at least 10 days have passed since symptom onset, whichever is longer). (The cases that have died and one case that has left the jurisdiction have been removed from these counts). Positive cases include confirmed cases, and Hawaii residents and non-residents; data are preliminary and subject to change. Note that CDC provides case counts according to states of residence.

## 7-Day Domestic by Island Moving Average Daily Passenger Volume

2020 Volume as Percentage of 2019 Volume

Through December 15, 2020



Source: HVCB analysis based on data from DBEDT  
Note: Passenger volume figures include both visitors and residents.

## Domestic by Island Month-to-Date and Year-to-Date Daily Passenger Volume

2020 Volume versus 2019 Volume

Through December 15, 2020

December 2020 (Month-to-Date through December 15)

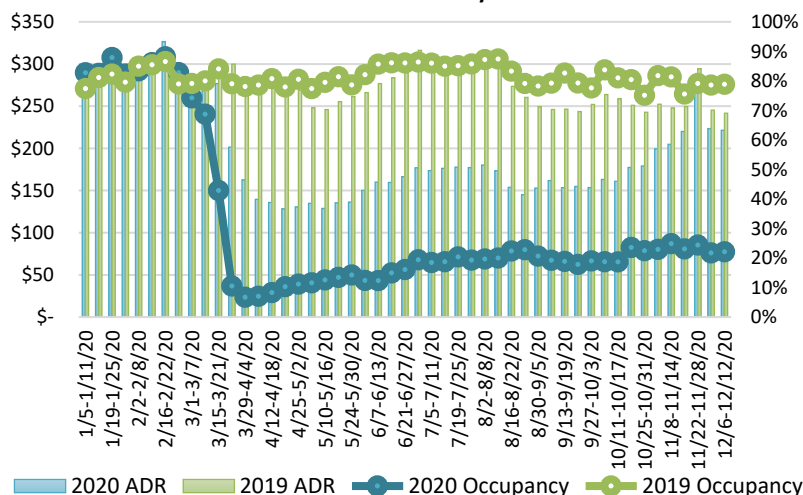
	2020	2019	Volume Change	Percent Change
Honolulu	57,906	179,620	-121,714	-67.8%
Maui County	30,400	86,111	-55,711	-64.7%
Island of Hawai'i	14,399	33,493	-19,094	-57.0%
Kaua'i	1,784	27,353	-25,569	-93.5%
Total	104,489	326,577	-222,088	-68.0%

2020 (Year-to-Date through December 15)

	2020	2019	Volume Change	Percent Change
Honolulu	1,414,624	4,391,984	-2,977,360	-67.8%
Maui County	564,160	2,131,712	-1,567,552	-73.5%
Island of Hawai'i	278,649	923,812	-645,163	-69.8%
Kaua'i	184,066	727,208	-543,142	-74.7%
Total	2,441,499	8,174,716	-5,733,218	-70.1%

Source: HVCB analysis based on data from DBEDT  
Note: Passenger volume figures include both visitors and residents. Total includes other international passengers. 2020 includes one additional day due to Leap Year (February 29th, 2020).

## State of Hawai'i Hotel Performance by Week - 2020 vs 2019



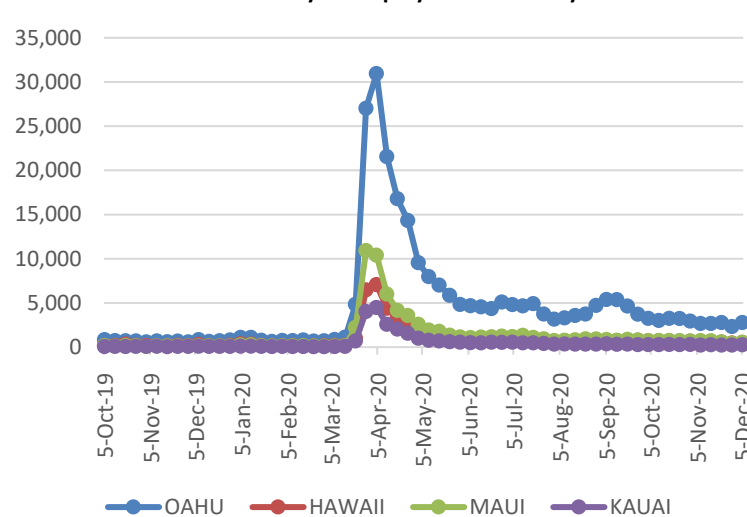
Source: STR, Inc. © Copyright 2020 Hawai'i Tourism Authority

## Hawaii Hotel Performance Info:

For the week of December 06 – December 12, 2020

	Occupancy	ADR	RevPAR
State of Hawaii	22.1%	\$ 221.42	\$ 48.94
Oahu	22.8%	\$ 159.96	\$ 36.47
Maui County	22.7%	\$ 346.67	\$ 78.73
Kauai County	14.1%	\$ 170.67	\$ 24.08
Island of Hawaii	23.3%	\$ 232.13	\$ 54.09

## 2020 Initial Weekly Unemployment Claims by Island



## Weekly Unemployment Initial Claims: December 05, 2020

State of Hawaii	4,291
C&C of Oahu	2,780
Hawaii County	512
Maui County	552
Kauai County	267
Agent (filed in Hawaii against another state)	180

## News Highlights

December 16, 2020

**Hawaii News Now:** [4 new deaths, 110 new COVID-19 cases reported in Hawaii](#)

**Hawaii News Now:** [Survey: High percentage of Hawaii's small businesses still struggling amid pandemic](#)

**Hawaii News Now:** [City to hold final food distribution event of the year on Friday](#)

**Hawaii News Now:** [Hawaii's largest vaccine shipment expected, with more health care workers to get shots](#)

**The Maui News:** [Quarantine until results received, not 14 days](#)

**Travel Pulse:** [Vaccine News Boosts Travel Bookings](#)

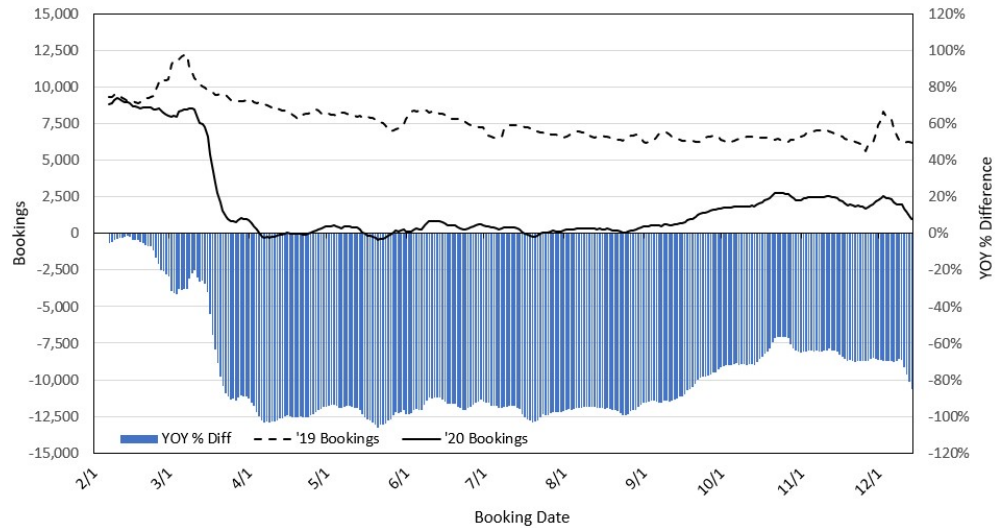
**Travel Pulse:** [United Airlines Working With CDC on Contact Tracing Initiative](#)

**PBS:** [Hawaii tries to revive tourism while keeping locals safe](#)

**Successful Meetings:** [How to Properly Clean and Disinfect an Event Venue](#)

**Wall Street Journal:** [The Problems With Covid Testing for Flights](#)

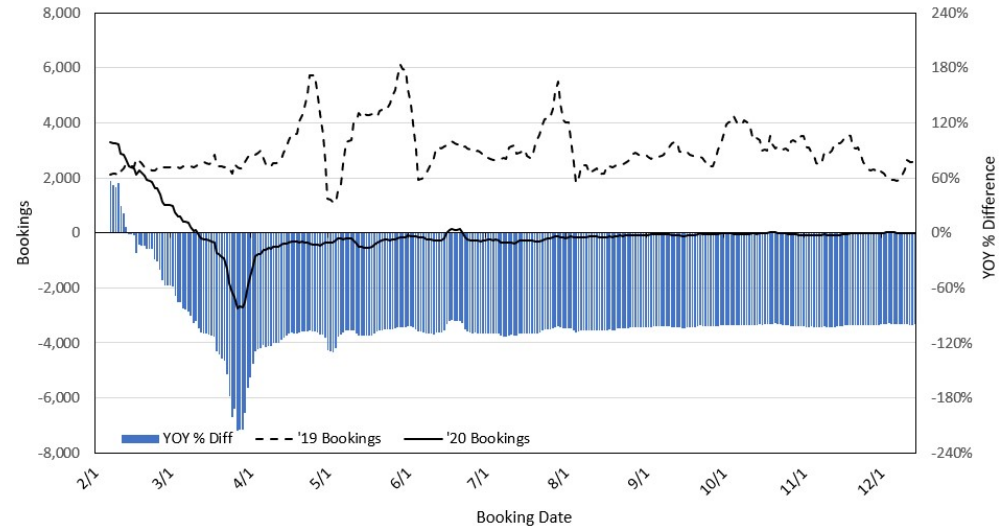
### Travel Agency Bookings to Hawaii for Future Arrivals\* Based on a 7-day Moving Average, 2020 vs 2019 U.S.



\*Future Arrivals refers to all arrivals that are 'future' relative to the referenced booking date.  
Source: Global Agency Pro

Update: Dec 14, 2020

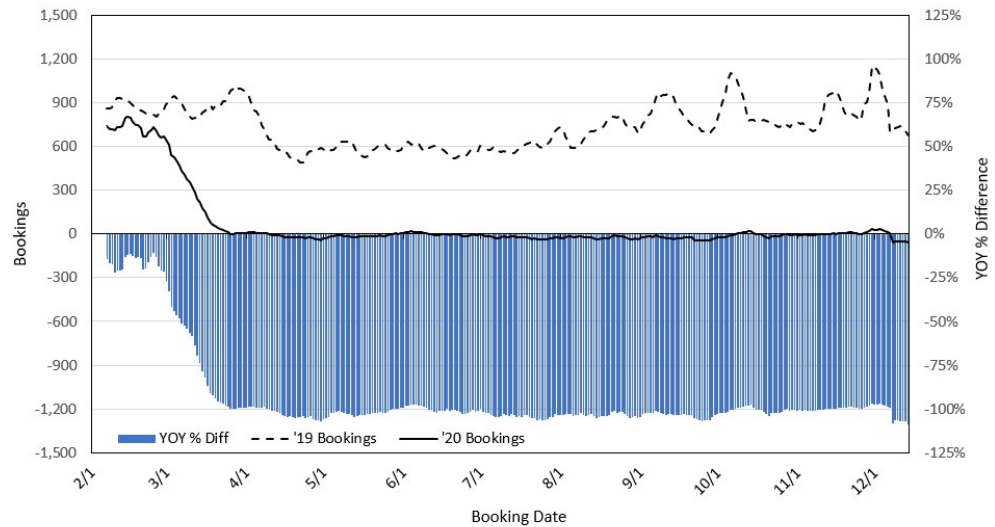
### Travel Agency Bookings to Hawaii for Future Arrivals\* Based on a 7-day Moving Average, 2020 vs 2019 Japan



\*Future Arrivals refers to all arrivals that are 'future' relative to the referenced booking date.  
Source: Global Agency Pro

Update: Dec 14, 2020

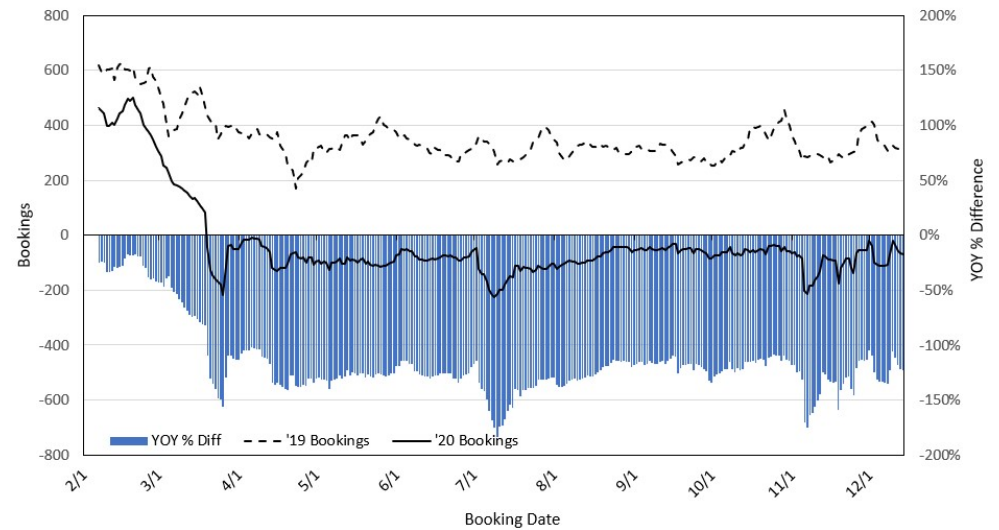
### Travel Agency Bookings to Hawaii for Future Arrivals\* Based on a 7-day Moving Average, 2020 vs 2019 Canada



\*Future Arrivals refers to all arrivals that are 'future' relative to the referenced booking date.  
Source: Global Agency Pro

Update: Dec 14, 2020

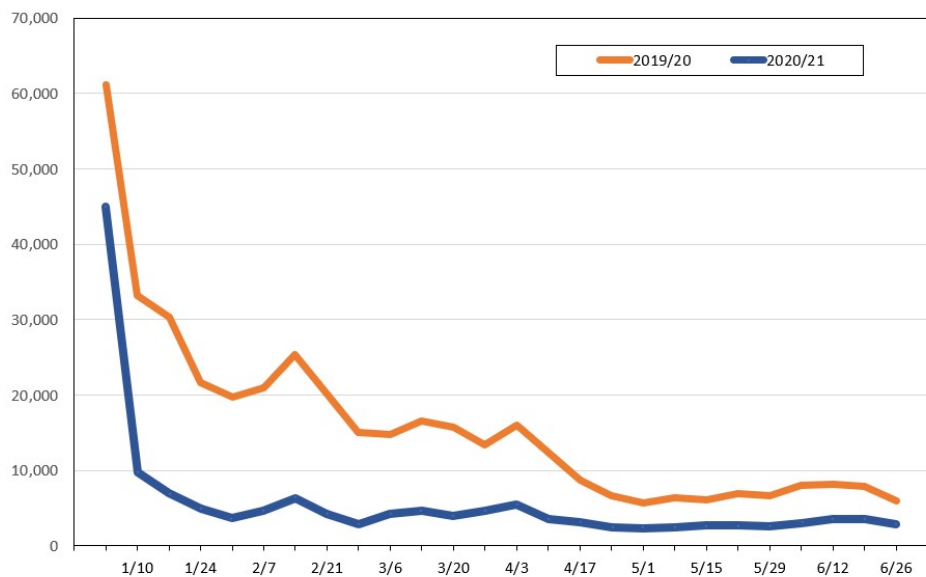
### Travel Agency Bookings to Hawaii for Future Arrivals\* Based on a 7-day Moving Average, 2020 vs 2019 Australia



\*Future Arrivals refers to all arrivals that are 'future' relative to the referenced booking date.  
Source: Global Agency Pro

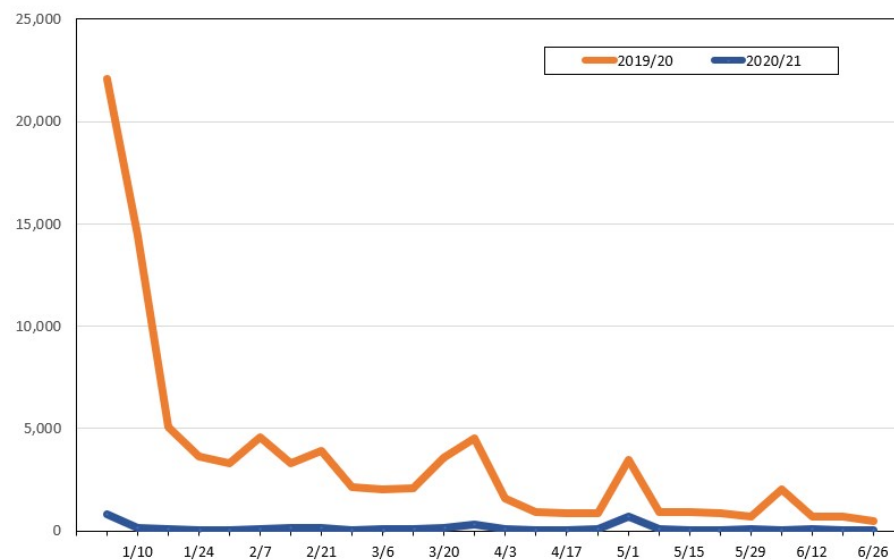
Update: Dec 14, 2020

**Travel Agency Weekly Bookings for Future Travel to Hawai'i as of December 14, 2020**  
U.S.



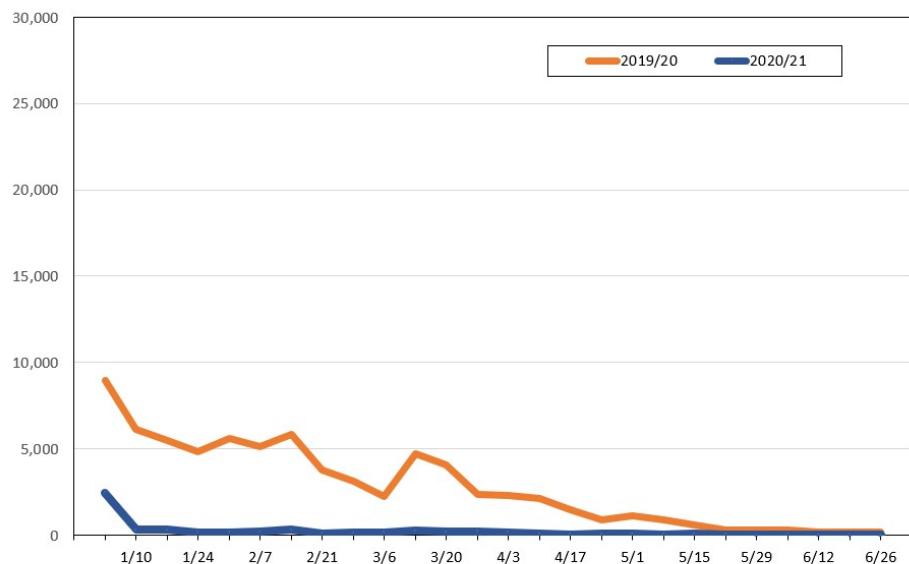
Source: Global Agency Pro, as of December 14, 2020

**Travel Agency Weekly Bookings for Future Travel to Hawai'i as of December 14, 2020**  
Japan



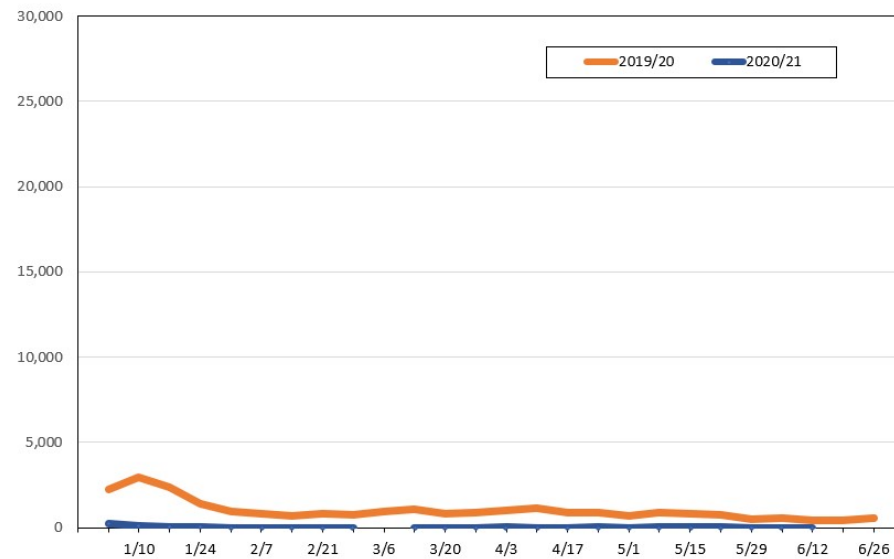
Source: Global Agency Pro, as of December 14, 2020

**Travel Agency Weekly Bookings for Future Travel to Hawai'i as of December 14, 2020**  
Canada



Source: Global Agency Pro, as of December 14, 2020

**Travel Agency Weekly Bookings for Future Travel to Hawai'i as of December 14, 2020**  
Australia



Source: Global Agency Pro, as of December 14, 2020