

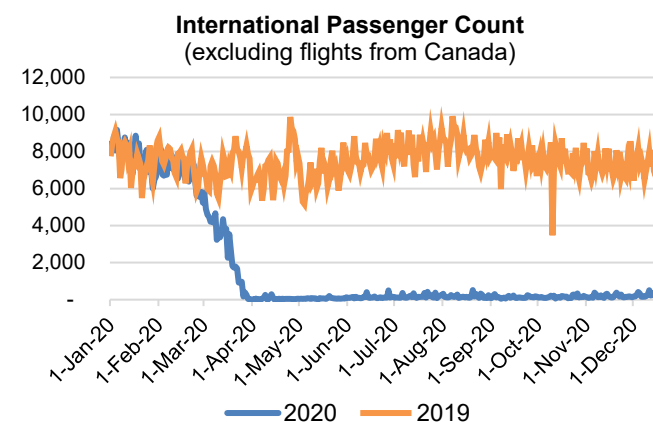
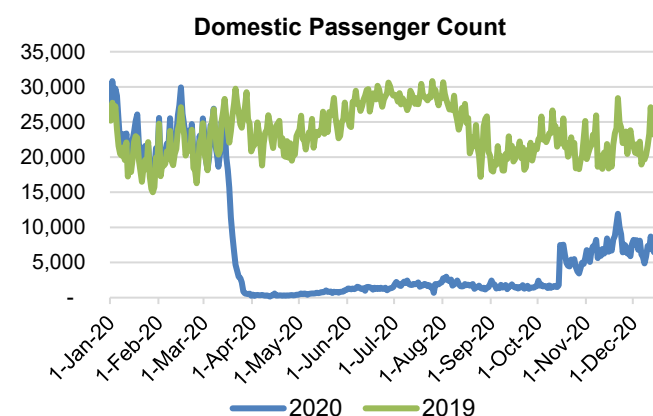
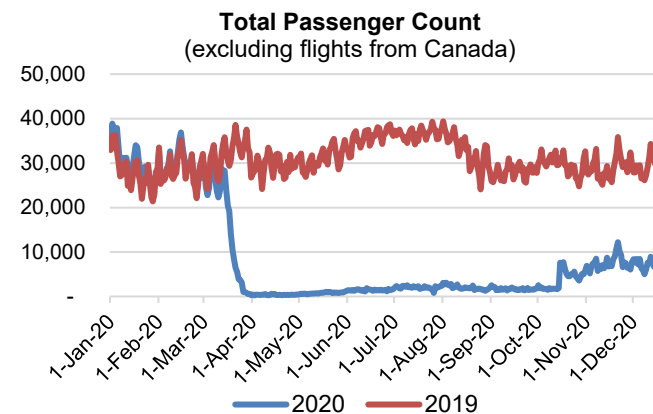
# HTA COVID-19 UPDATE

(Issued: 12/17/20 @ 4:30pm)

Reason for Trip by Arrival Airport - Transpacific Screened Passengers as of 12/16/20	Honolulu (HNL)	Kahului (OGG)	Kona (KOA)	Lihue (LIH)	Grand Total
Airline Crew	416	204	102	0	722
Connecting Flight (Transit)	335	17	5	1	358
Corporate Meeting	4	2	0	0	6
Essential Worker	75	18	11	0	104
Honeymoon	12	5	0	0	17
Intended Resident	107	19	23	1	150
Military or Federal Government	74	0	0	1	75
Other	63	26	17	0	106
Other Business	60	39	15	0	114
Pleasure/Vacation	1,630	1,982	732	0	4,344
Returning Resident	1,034	157	109	15	1,315
Sports Event	2	0	0	0	2
To Attend School	15	0	1	0	16
To Get Married	3	5	0	0	8
Transit	2	0	0	0	2
Visiting Friends or Relatives	1,717	293	241	10	2,261
<b>Grand Total</b>	<b>5,549</b>	<b>2,767</b>	<b>1,256</b>	<b>28</b>	<b>9,600</b>

**Source:** Safe Travels program developed by the State of Hawaii Office of Enterprise Technology Services

**Note:** The data is preliminary and subject to change



## Daily Passenger Count Table

12/16/2020	Domestic	International	Total
Oahu	4717	231	4948
Maui	2508		2508
Island of Hawaii	1156		1156
Kauai	11		11
State	8392	231	8623

## Novel Coronavirus in Hawaii

### COVID-19 Positive Cases

Cumulative totals as of 12:00pm on December 17, 2020

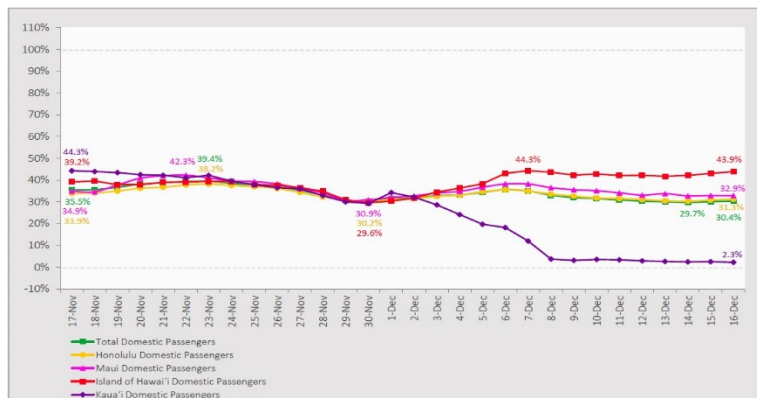
Total Confirmed Cases	19,731* (142 new)
Hawaii	1,763
Kauai	135
Lanai	106
Maui	735†
Molokai	22
Oahu	16,656
Out of State	314
Pending	0
Required Hospitalization	314‡
Hawaii Deaths	280
Cases in the past 14 days	1,468**

### Footnotes for COVID-19 Cases

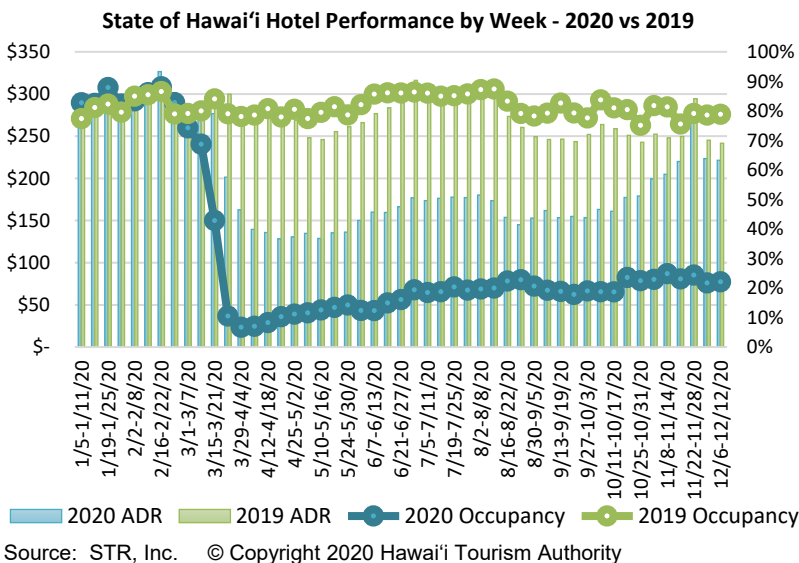
\*As a result of updated information, one case on Maui was recategorized to Kauai, one case on Oahu was recategorized to Hawaii, one case on Hawaii was recategorized to out-of-state, and one case on Hawaii was dropped from the counts.

## 7-Day Domestic by Island Moving Average Daily Passenger Volume

2020 Volume as Percentage of 2019 Volume  
Through December 16, 2020



Source: HVCB analysis based on data from DBEDT  
Note: Passenger volume figures include both visitors and residents.



## Hawaii Hotel Performance Info:

For the week of December 06 – December 12, 2020

	Occupancy	ADR	RevPAR
State of Hawaii	22.1%	\$ 221.42	\$ 48.94
Oahu	22.8%	\$ 159.96	\$ 36.47
Maui County	22.7%	\$ 346.67	\$ 78.73
Kauai County	14.1%	\$ 170.67	\$ 24.08
Island of Hawaii	23.3%	\$ 232.13	\$ 54.09

## Domestic by Island Month-to-Date and Year-to-Date Daily Passenger Volume

2020 Volume versus 2019 Volume  
Through December 16, 2020

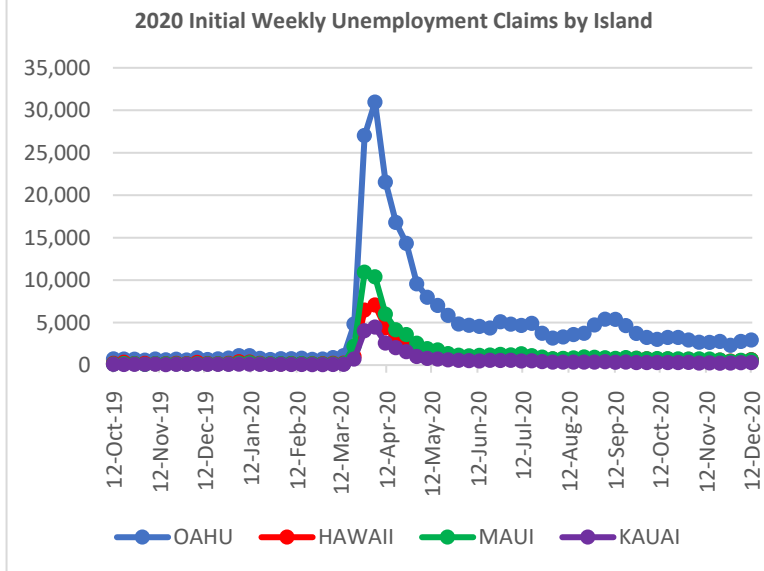
December 2020 (Month-to-Date through December 16)

	2020	2019	Volume Change	Percent Change
Honolulu	62,623	192,430	-129,807	-67.5%
Maui County	32,908	92,625	-59,717	-64.5%
Island of Hawai'i	15,555	35,781	-20,226	-56.5%
Kaua'i	1,795	29,406	-27,611	-93.9%
Total	112,881	350,242	-237,361	-67.8%

2020 (Year-to-Date through December 16)

	2020	2019	Volume Change	Percent Change
Honolulu	1,419,341	4,404,794	-2,985,453	-67.8%
Maui County	566,668	2,138,226	-1,571,558	-73.5%
Island of Hawai'i	279,805	926,100	-646,295	-69.8%
Kaua'i	184,077	729,261	-545,184	-74.8%
Total	2,449,891	8,198,381	-5,748,491	-70.1%

Source: HVCB analysis based on data from DBEDT  
Note: Passenger volume figures include both visitors and residents. Total includes other international passengers. 2020 includes one additional day due to Leap Year (February 29th, 2020).



## Weekly Unemployment Initial Claims: December 12, 2020

State of Hawaii	4,654
C&C of Oahu	2,944
Hawaii County	632
Maui County	604
Kauai County	289
Agent (filed in Hawaii against another state)	185

## News Highlights

December 17, 2020

**Hawaii News Now:** [State issues new COVID-19 rules, shortening quarantine and extending eviction protections](#)

**KHON2:** [As more vaccines arrive, urgency grows to educate the public](#)

**KITV4:** [Big Island mayor announces partnership that will allow the island to continue offering post-travel testing](#)

**KITV4:** [More COVID-19 vaccines arrive in Hawaii](#)

**The Maui News:** [Vaccine drive-thru drill held at UH-MC](#)

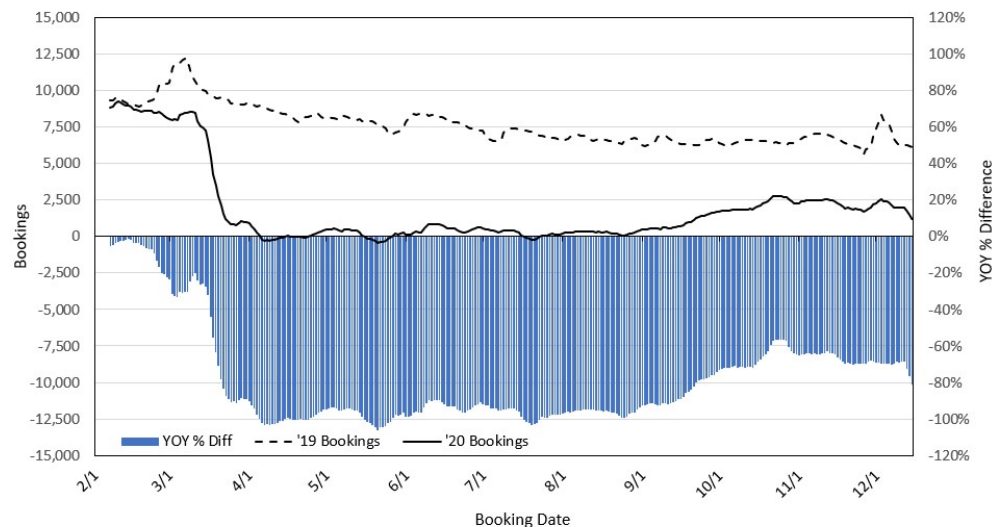
**The Garden Island:** [7.6% of CARES Act funds left on Kauai](#)

**Travel + Leisure:** [All the U.S. Airlines Offering COVID-19 Testing](#)

**Tripsavvy:** [United Will Offer Optional Contact Tracing On All Flights](#)

**Travel Pulse:** [Stimulus Package, Including Travel Relief, Appears Imminent](#)

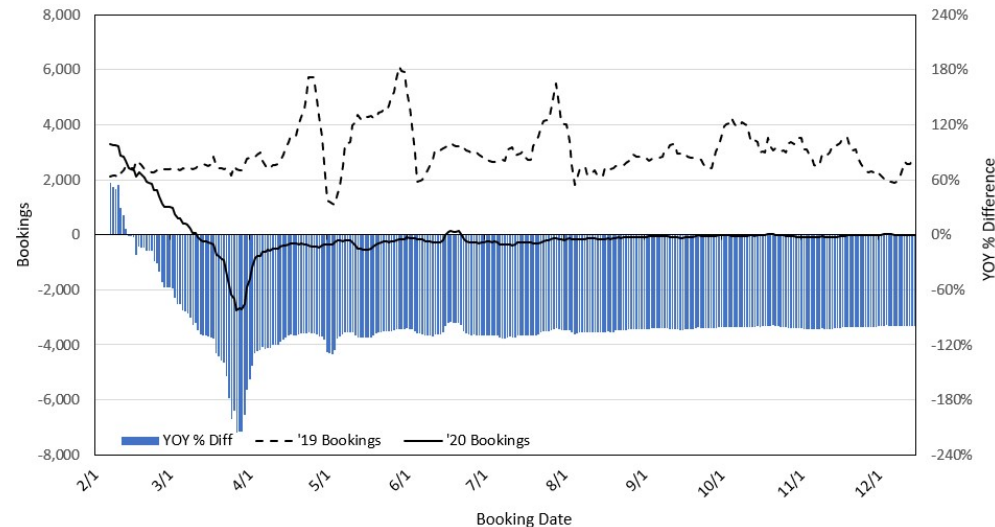
### Travel Agency Bookings to Hawaii for Future Arrivals\* Based on a 7-day Moving Average, 2020 vs 2019 U.S.



\*Future Arrivals refers to all arrivals that are 'future' relative to the referenced booking date.  
Source: Global Agency Pro

Update: Dec 15, 2020

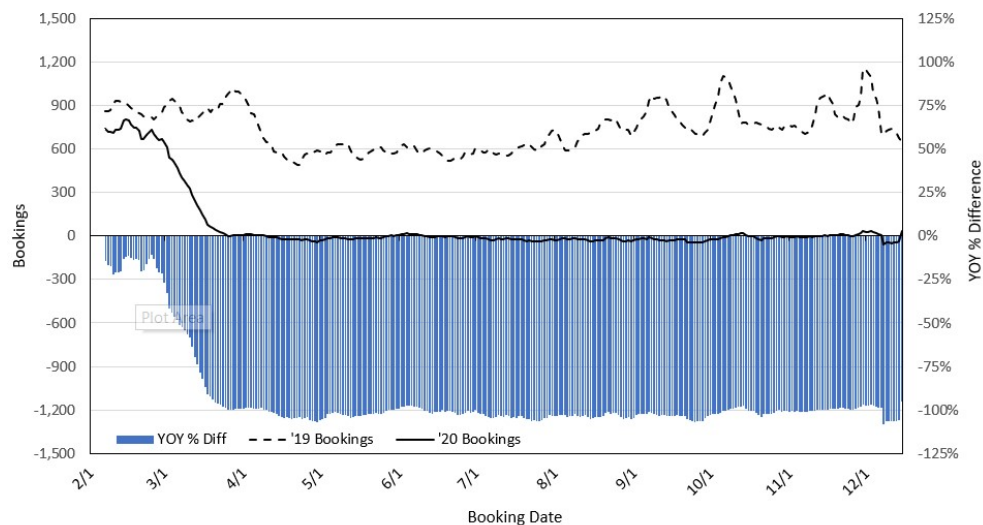
### Travel Agency Bookings to Hawaii for Future Arrivals\* Based on a 7-day Moving Average, 2020 vs 2019 Japan



\*Future Arrivals refers to all arrivals that are 'future' relative to the referenced booking date.  
Source: Global Agency Pro

Update: Dec 15, 2020

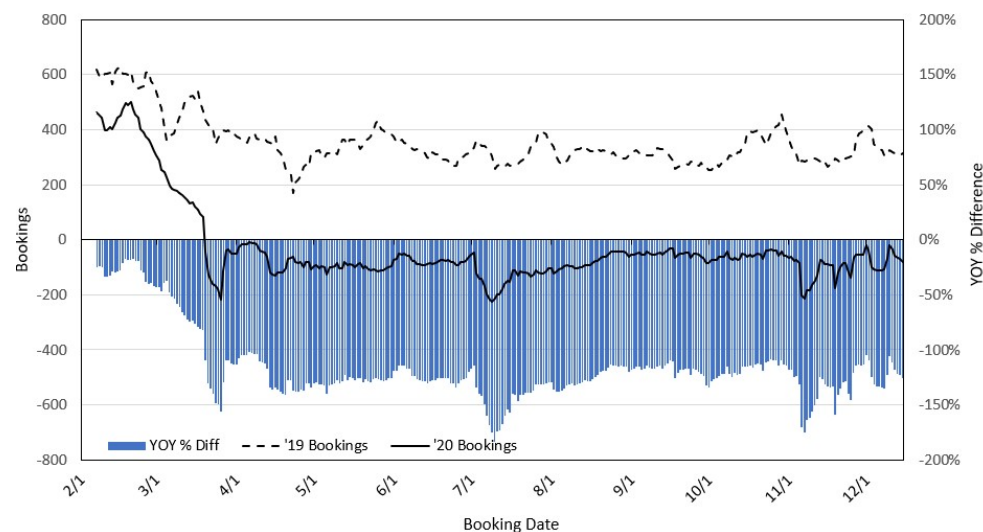
### Travel Agency Bookings to Hawaii for Future Arrivals\* Based on a 7-day Moving Average, 2020 vs 2019 Canada



\*Future Arrivals refers to all arrivals that are 'future' relative to the referenced booking date.  
Source: Global Agency Pro

Update: Dec 15, 2020

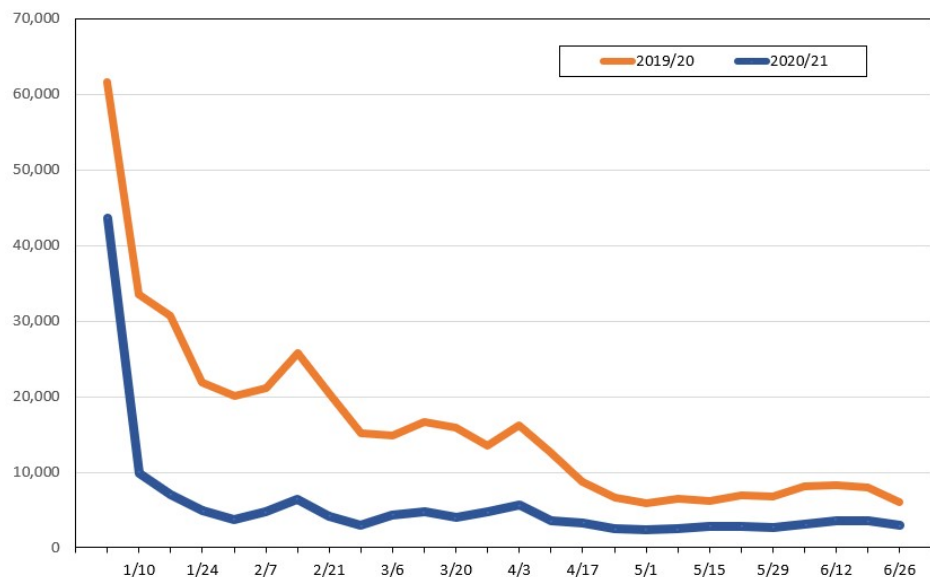
### Travel Agency Bookings to Hawaii for Future Arrivals\* Based on a 7-day Moving Average, 2020 vs 2019 Australia



\*Future Arrivals refers to all arrivals that are 'future' relative to the referenced booking date.  
Source: Global Agency Pro

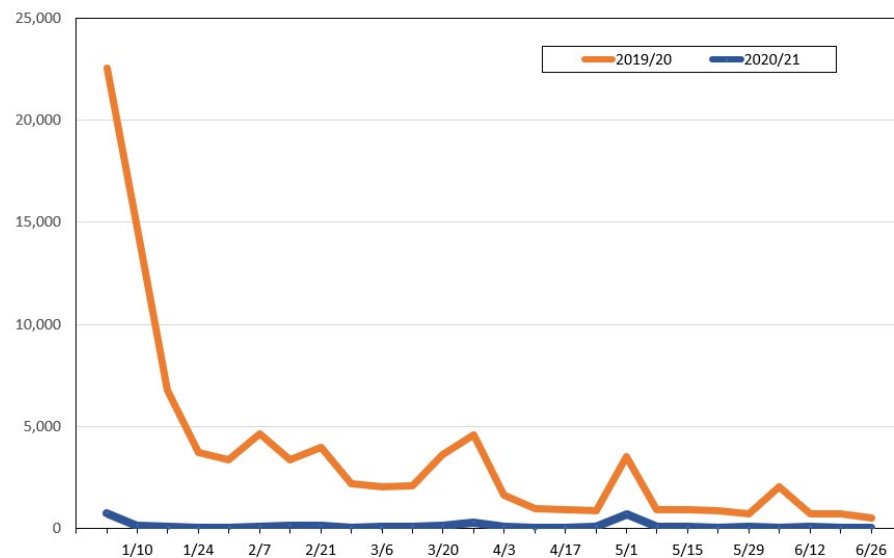
Update: Dec 15, 2020

**Travel Agency Weekly Bookings for Future Travel to Hawai'i as of December 15, 2020**  
U.S.



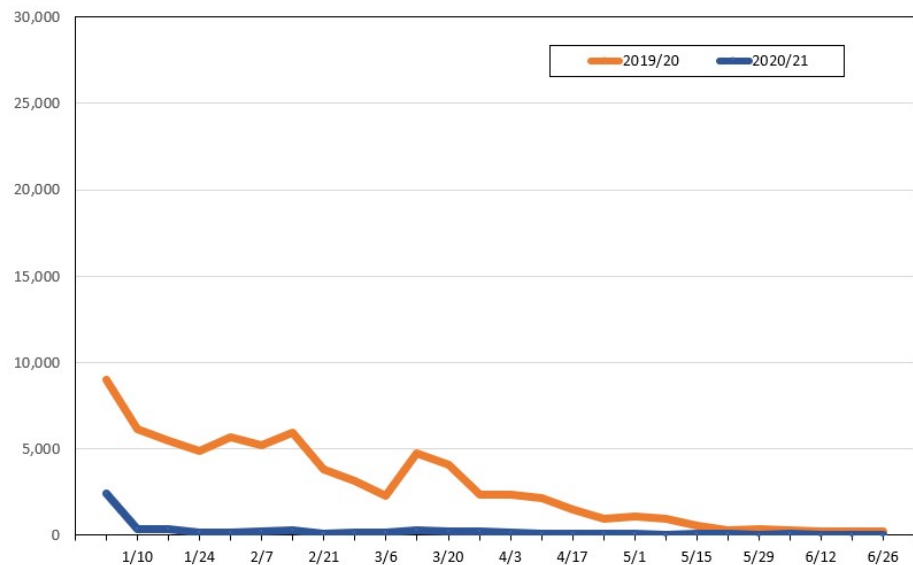
Source: Global Agency Pro, as of December 15, 2020

**Travel Agency Weekly Bookings for Future Travel to Hawai'i as of December 15, 2020**  
Japan



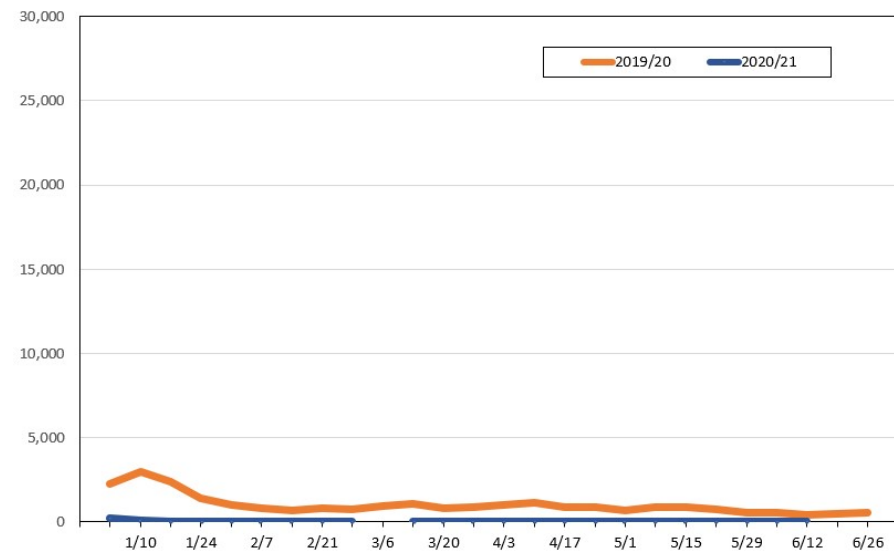
Source: Global Agency Pro, as of December 15, 2020

**Travel Agency Weekly Bookings for Future Travel to Hawai'i as of December 15, 2020**  
Canada



Source: Global Agency Pro, as of December 15, 2020

**Travel Agency Weekly Bookings for Future Travel to Hawai'i as of December 15, 2020**  
Australia



Source: Global Agency Pro, as of December 15, 2020