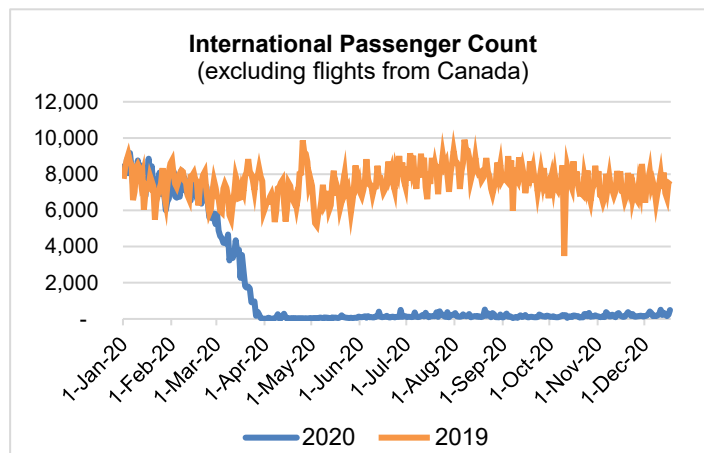
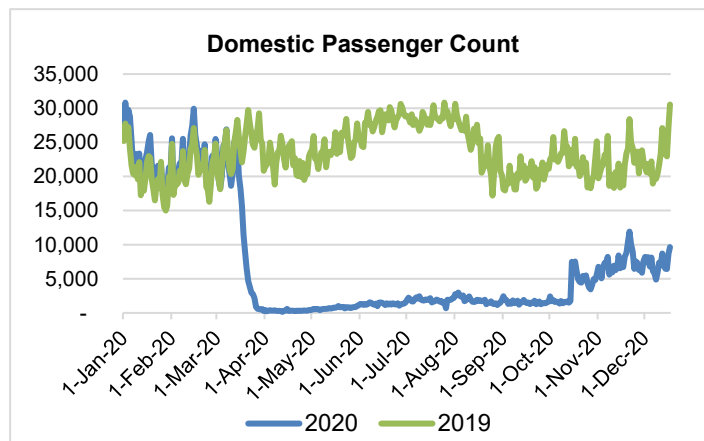
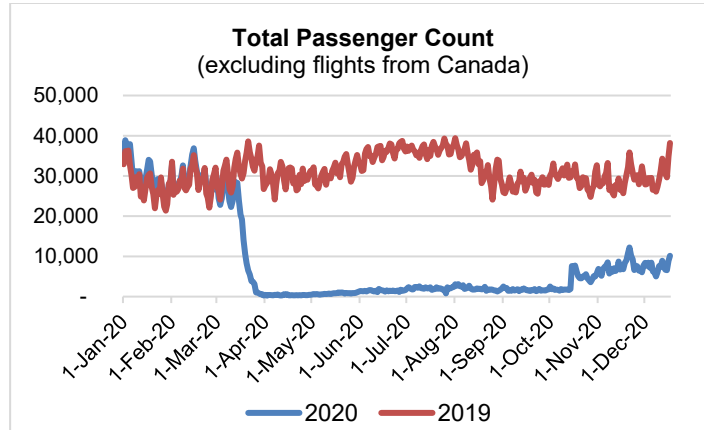


HTA COVID-19 UPDATE

(Issued: 12/18/20 @ 4:30pm)

Reason for Trip by Arrival Airport - Transpacific Screened Passengers as of 12/17/20	Honolulu (HNL)	Kahului (OGG)	Kona (KOA)	Lihue (LIH)	Grand Total
Airline Crew	523	233	116	9	881
Connecting Flight (Transit)	465	10	1	2	478
Corporate Meeting	3	1	1	0	5
Essential Worker	71	24	14	0	109
Honeymoon	13	7	4	0	24
Incentive Trip	3	0	1	0	4
Intended Resident	90	27	32	4	153
Military or Federal Government	82	2	1	0	85
Other	62	19	17	0	98
Other Business	39	15	18	1	73
Pleasure/Vacation	1,997	2,108	1,090	8	5,203
Returning Resident	944	234	164	18	1,360
Sports Event	1	0	0	0	1
To Attend School	15	0	0	0	15
To Get Married	3	1	0	0	4
Transit	4	0	0	0	4
Visiting Friends or Relatives	1,755	434	366	17	2,572
Grand Total	6,070	3,115	1,825	59	11,069

Source: Safe Travels program developed by the State of Hawaii Office of Enterprise Technology Services
Note: The data is preliminary and subject to change



Daily Passenger Count Table

12/17/2020	Domestic	International	Total
Oahu	4768	489	5257
Maui	3180		3180
Island of Hawaii	1661		1661
Kauai	32		32
State	9641	489	10130

Novel Coronavirus in Hawaii

COVID-19 Positive Cases

Cumulative totals as of 12:00pm on December 18, 2020

Total Confirmed Cases	19,859* (130 new)
Hawaii	1,769
Kauai	136
Lanai	106
Maui	746†
Molokai	22
Oahu	16,760
Out of State	320
Pending	0
Required Hospitalization	1394‡
Hawaii Deaths	281
Cases in the past 14 days	1,489**

Footnotes for COVID-19 Cases

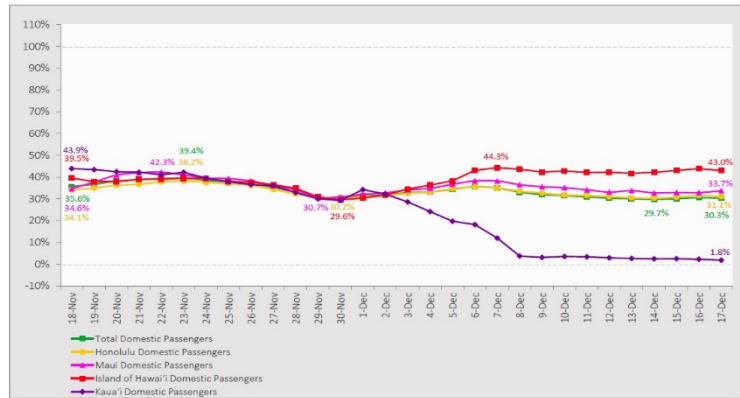
*As a result of updated information, one case on Hawaii and one case on Oahu were removed from the counts.

**Using cases reported in the past 14 days provides a rough approximation of the number of cases currently meeting criteria for isolation. This proxy number for "active cases" resolves classification issues for cases unable to be reached or who are out of jurisdiction, for whom precise release from isolation date may not be possible to determine. It is also not influenced by lags in data entry. (This total does not include Hawaii residents diagnosed outside of Hawaii)

‡Includes Hawaii residents hospitalized out of state.

7-Day Domestic by Island Moving Average Daily Passenger Volume

2020 Volume as Percentage of 2019 Volume
Through December 17, 2020



Source: HVCB analysis based on data from DBEDT
Note: Passenger volume figures include both visitors and residents.

Domestic by Island Month-to-Date and Year-to-Date Daily Passenger Volume

2020 Volume versus 2019 Volume
Through December 17, 2020

December 2020 (Month-to-Date through December 17)

	2020	2019	Volume Change	Percent Change
Honolulu	67,687	205,182	-137,495	-67.0%
Maui County	36,088	98,714	-62,626	-63.4%
Island of Hawai'i	17,216	38,088	-20,872	-54.8%
Kaua'i	1,827	31,196	-29,369	-94.1%
Total	122,818	373,180	-250,362	-67.1%

2020 (Year-to-Date through December 17)

	2020	2019	Volume Change	Percent Change
Honolulu	1,424,405	4,417,546	-2,993,141	-67.8%
Maui County	569,848	2,144,315	-1,574,468	-73.4%
Island of Hawai'i	281,466	928,407	-646,941	-69.7%
Kaua'i	184,109	731,051	-546,942	-74.8%
Total	2,459,827	8,221,319	-5,761,492	-70.1%

Source: HVCB analysis based on data from DBEDT
Note: Passenger volume figures include both visitors and residents. Total includes other international passengers. 2020 includes one additional day due to Leap Year (February 29th, 2020).

News Highlights

December 18, 2020

Honolulu Star Advertiser: [Hawaii records 2 additional coronavirus deaths and 142 new infections statewide](#)

Honolulu Star Advertiser: [Federal judge denies request to reopen Oahu bars and nightclubs](#)

KHON2: [Oahu to use \\$7 million towards COVID-related programs after CARES Act money runs out](#)

The Garden Island: [New case of COVID-19 is local child](#)

Fox News: [Hawaii reduces coronavirus quarantine for incoming visitors](#)

TravelAge West: [The Main Challenges to Booking Hawaii Travel Right Now](#)

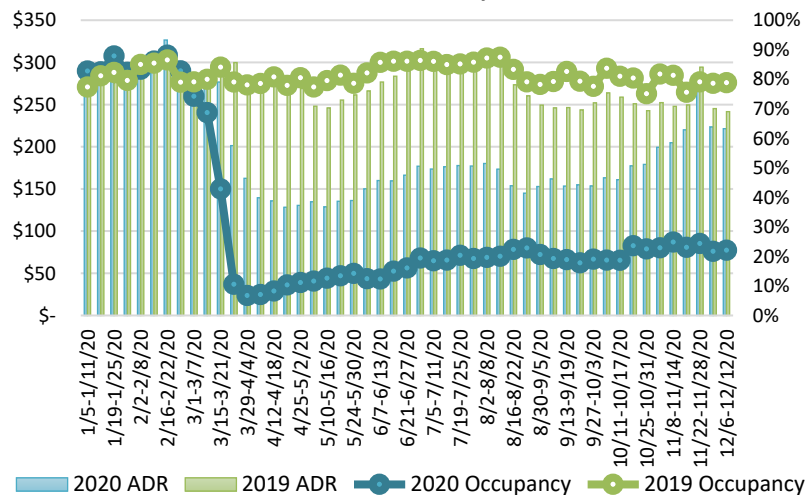
Travel Weekly: [Last-minute surge in air bookings for the holidays](#)

Travel Pulse: [US State Travel Restrictions: December's Latest COVID-19 Requirements](#)

Wall Street Journal: [Hawaii Opens to Tourists Again, But Beware the Covid Hurdles](#)

The Points Guy: [Hawaii reduces quarantine period: Here's everything visitors to Hawaii need to know](#)

State of Hawai'i Hotel Performance by Week - 2020 vs 2019



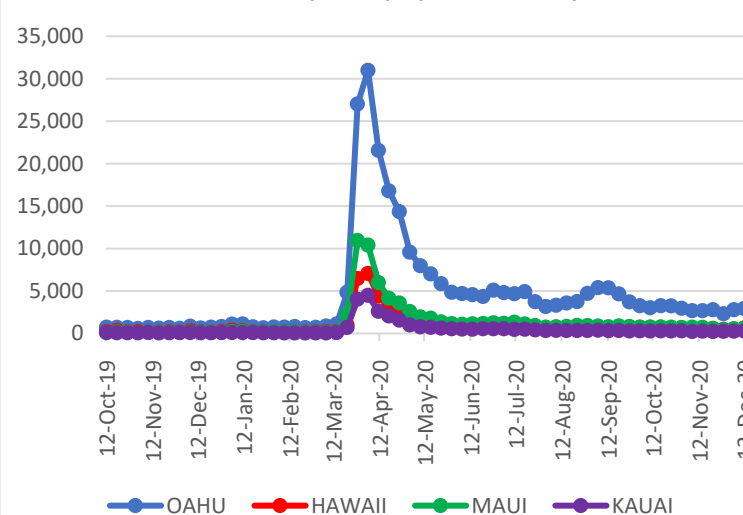
Source: STR, Inc. © Copyright 2020 Hawai'i Tourism Authority

Hawaii Hotel Performance Info:

For the week of December 06 – December 12, 2020

	Occupancy	ADR	RevPAR
State of Hawaii	22.1%	\$ 221.42	\$ 48.94
Oahu	22.8%	\$ 159.96	\$ 36.47
Maui County	22.7%	\$ 346.67	\$ 78.73
Kauai County	14.1%	\$ 170.67	\$ 24.08
Island of Hawaii	23.3%	\$ 232.13	\$ 54.09

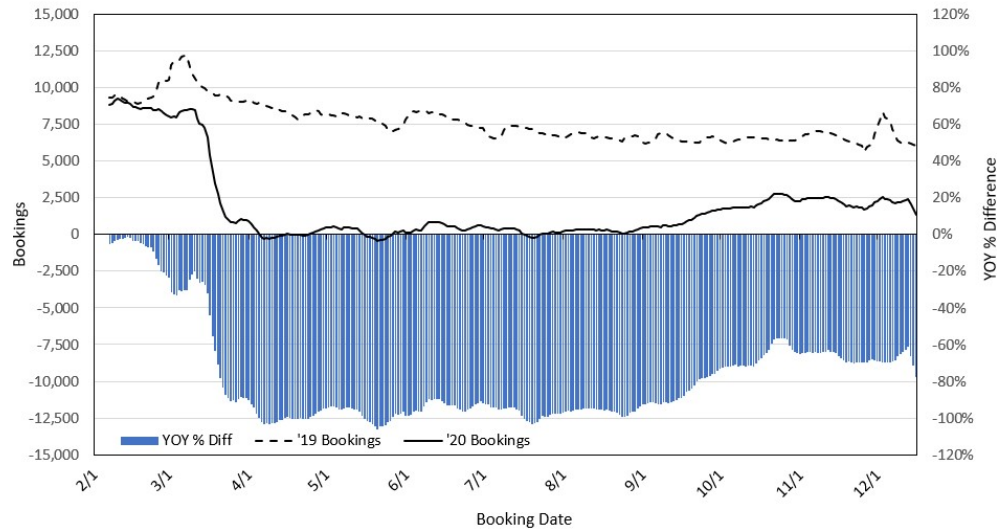
2020 Initial Weekly Unemployment Claims by Island



Weekly Unemployment Initial Claims: December 12, 2020

State of Hawaii	4,654
C&C of Oahu	2,944
Hawaii County	632
Maui County	604
Kauai County	289
Agent (filed in Hawaii against another state)	185

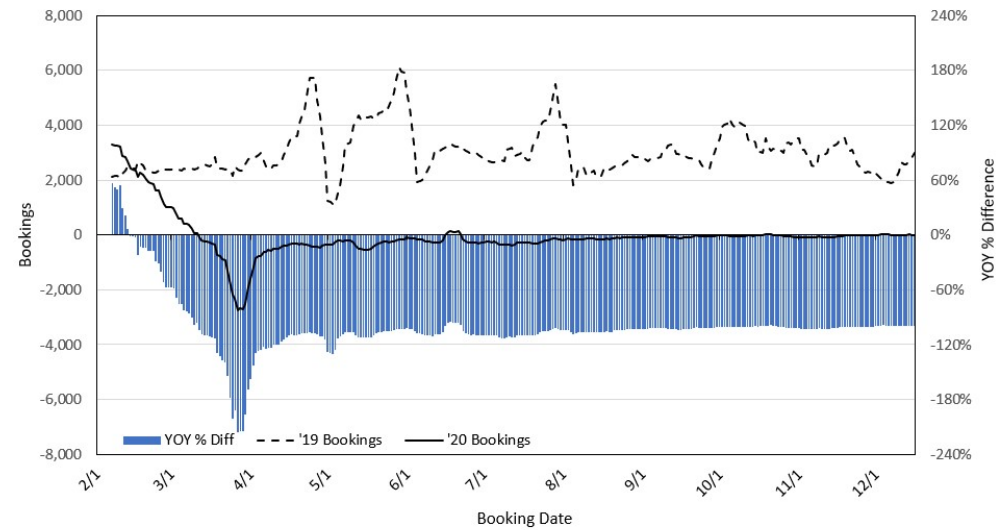
Travel Agency Bookings to Hawaii for Future Arrivals* Based on a 7-day Moving Average, 2020 vs 2019 U.S.



*Future Arrivals refers to all arrivals that are 'future' relative to the referenced booking date.
Source: Global Agency Pro

Update: Dec 16, 2020

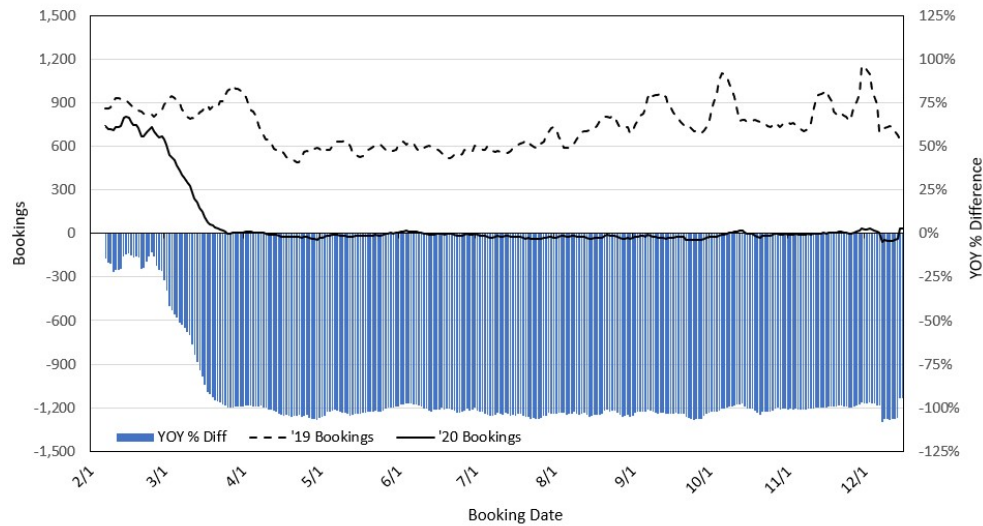
Travel Agency Bookings to Hawaii for Future Arrivals* Based on a 7-day Moving Average, 2020 vs 2019 Japan



*Future Arrivals refers to all arrivals that are 'future' relative to the referenced booking date.
Source: Global Agency Pro

Update: Dec 16, 2020

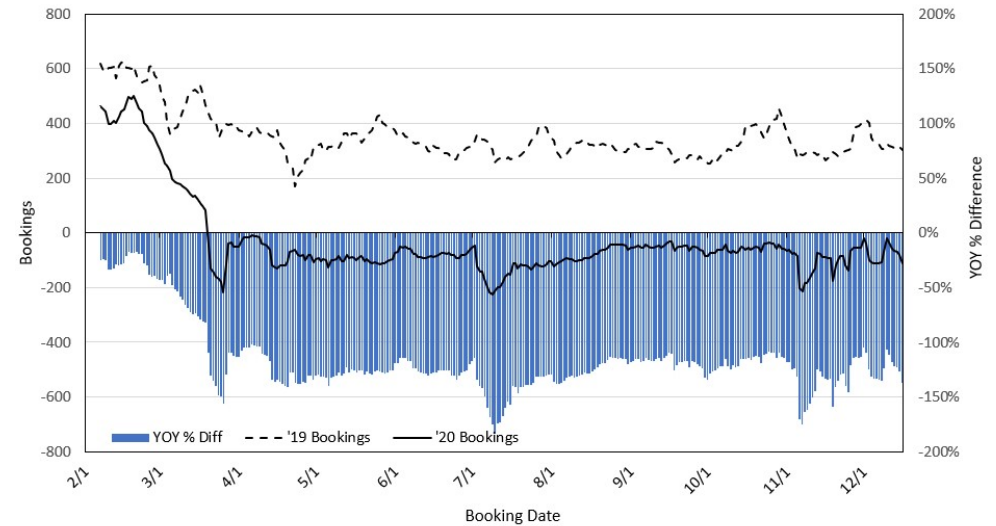
Travel Agency Bookings to Hawaii for Future Arrivals* Based on a 7-day Moving Average, 2020 vs 2019 Canada



*Future Arrivals refers to all arrivals that are 'future' relative to the referenced booking date.
Source: Global Agency Pro

Update: Dec 16, 2020

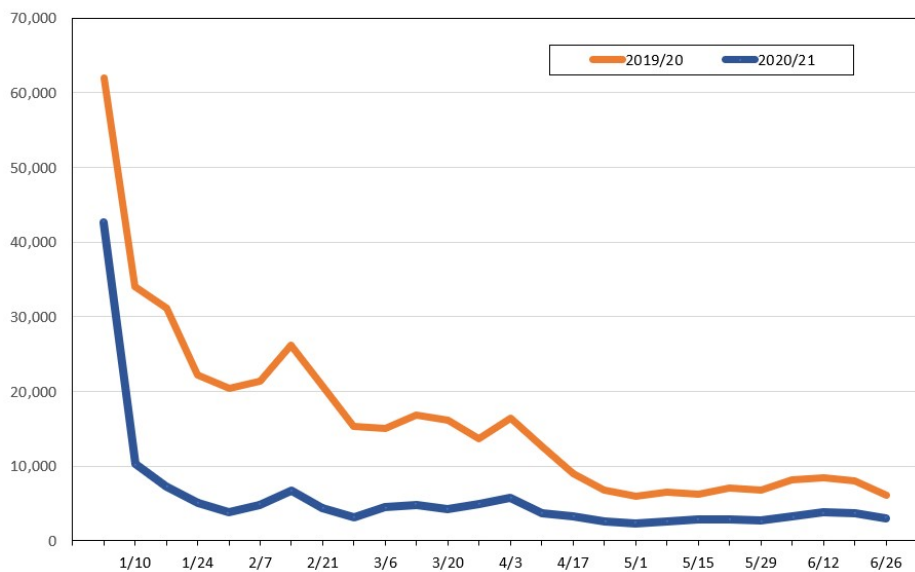
Travel Agency Bookings to Hawaii for Future Arrivals* Based on a 7-day Moving Average, 2020 vs 2019 Australia



*Future Arrivals refers to all arrivals that are 'future' relative to the referenced booking date.
Source: Global Agency Pro

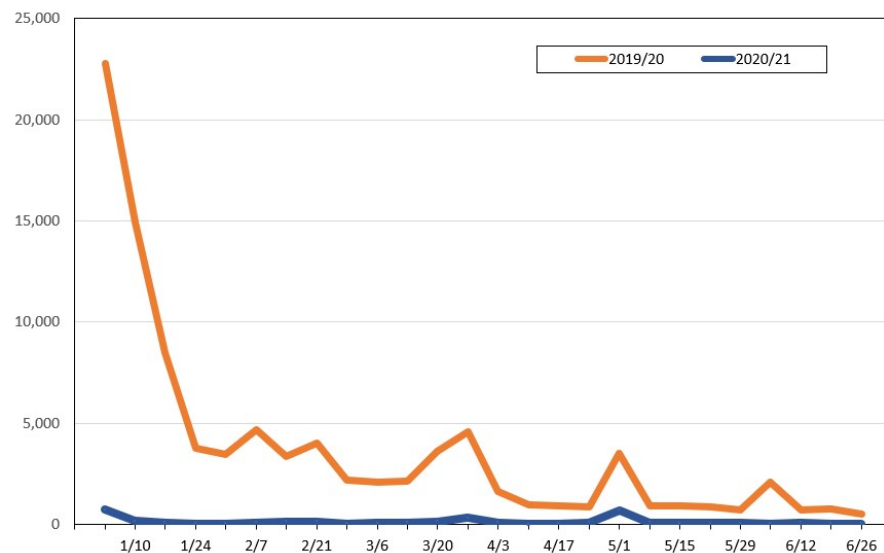
Update: Dec 16, 2020

Travel Agency Weekly Bookings for Future Travel to Hawai'i as of December 16, 2020
U.S.



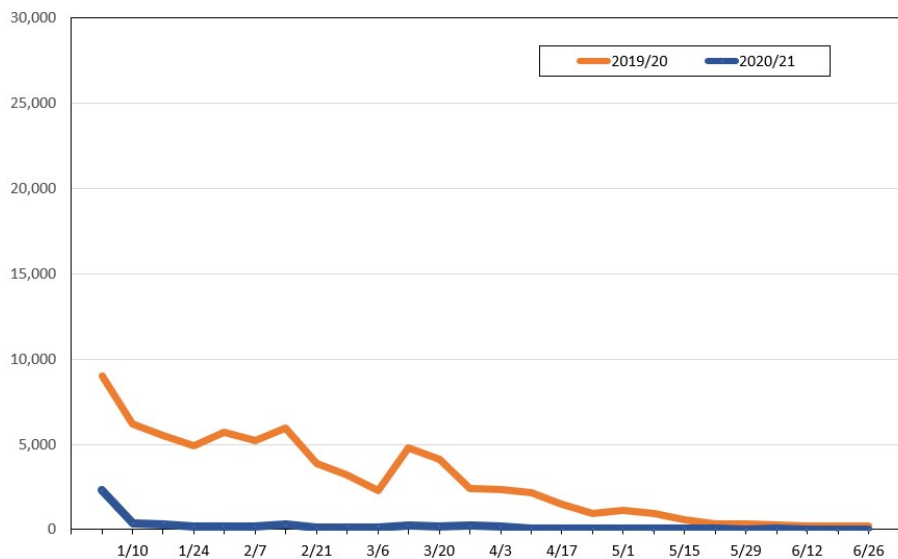
Source: Global Agency Pro, as of December 16, 2020

Travel Agency Weekly Bookings for Future Travel to Hawai'i as of December 16, 2020
Japan



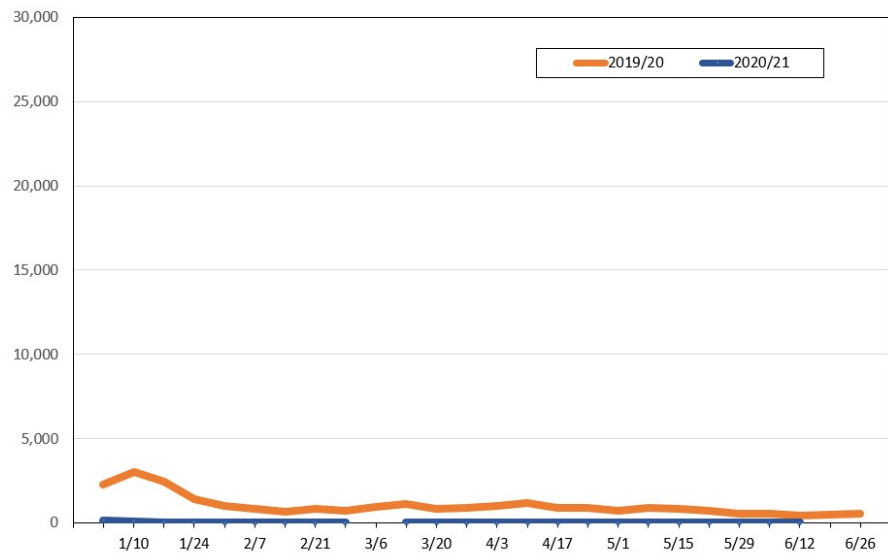
Source: Global Agency Pro, as of December 16, 2020

Travel Agency Weekly Bookings for Future Travel to Hawai'i as of December 16, 2020
Canada



Source: Global Agency Pro, as of December 16, 2020

Travel Agency Weekly Bookings for Future Travel to Hawai'i as of December 16, 2020
Australia



Source: Global Agency Pro, as of December 16, 2020