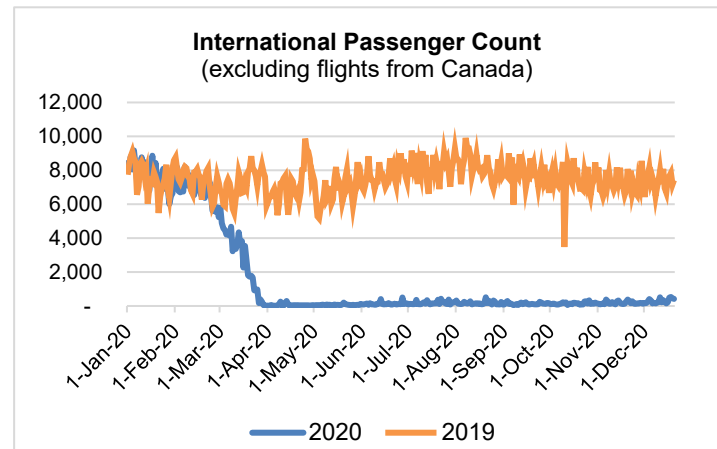
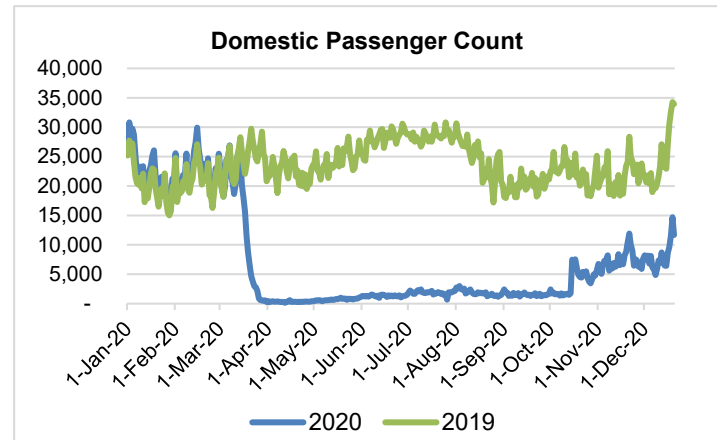
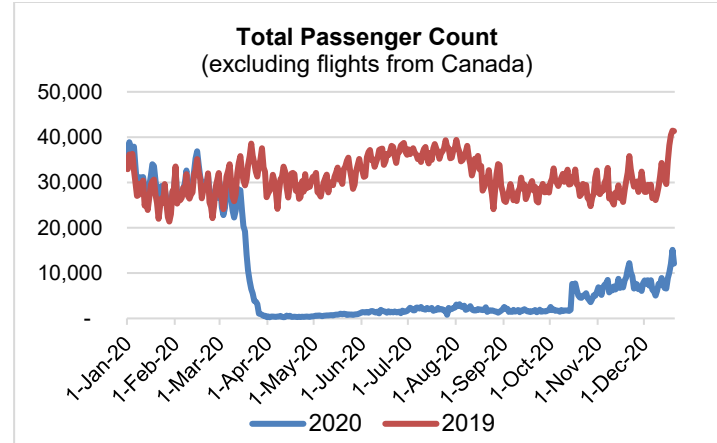


HTA COVID-19 UPDATE

(Issued: 12/21/20 @ 4:30pm)

Reason for Trip by Arrival Airport - Transpacific Screened Passengers as of 12/20/20	Honolulu (HNL)	Kahului (OGG)	Kona (KOA)	Lihue (LIH)	Grand Total
Airline Crew	513	262	119	17	911
Connecting Flight (Transit)	402	15	0	0	417
Corporate Meeting	5	0	0	0	5
Essential Worker	62	16	9	10	97
Honeymoon	6	8	6	0	20
Incentive Trip	4	0	0	0	4
Intended Resident	106	12	13	5	136
Military or Federal Government	97	1	0	0	98
Other	54	13	5	2	74
Other Business	33	29	13	1	76
Pleasure/Vacation	2,519	3,144	1,497	15	7,175
Returning Resident	1,106	177	131	22	1,436
Sports Event	3	1	0	0	4
To Attend School	10	0	0	0	10
To Get Married	5	2	3	0	10
Transit	2	0	0	0	2
Visiting Friends or Relatives	1,733	447	374	16	2,570
Grand Total	6,660	4,127	2,170	88	13,045

Source: Safe Travels program developed by the State of Hawaii Office of Enterprise Technology Services
Note: The data is preliminary and subject to change



Daily Passenger Count Table

12/20/2020	Domestic	International	Total
Oahu	5989	421	6410
Maui	3658		3658
Island of Hawaii	1948		1948
Kauai	67		67
State	11662	421	12083

Novel Coronavirus in Hawaii

COVID-19 Positive Cases

Cumulative totals as of 12:00pm on December 21, 2020

Total Confirmed Cases	20,351* (134 new)
Hawaii	1,816
Kauai	138
Lanai	106
Maui	785†
Molokai	22
Oahu	17,158
Out of State	326
Pending	0
Required Hospitalization	1413‡
Hawaii Deaths	282
Cases in the past 14 days	1,688**

Footnotes for COVID-19 Cases

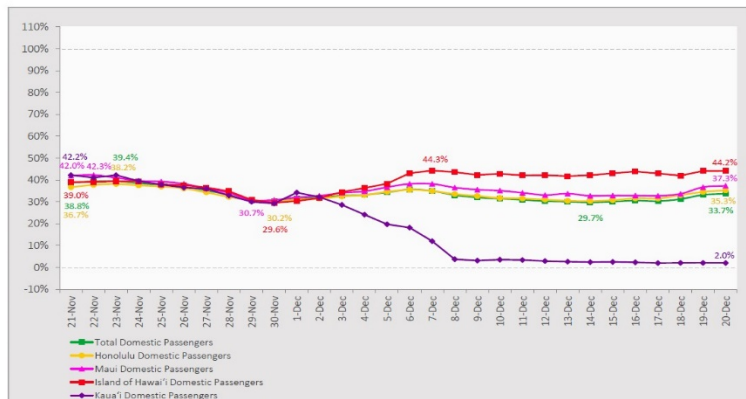
*As a result of updated information, one case on Hawaii and one case on Oahu were removed from the counts.

**Using cases reported in the past 14 days provides a rough approximation of the number of cases currently meeting criteria for isolation. This proxy number for "active cases" resolves classification issues for cases unable to be reached or who are out of jurisdiction, for whom precise release from isolation date may not be possible to determine. It is also not influenced by lags in data entry. (This total does not include Hawaii residents diagnosed outside of Hawaii)

‡Includes Hawaii residents hospitalized out of state.

7-Day Domestic by Island Moving Average Daily Passenger Volume

2020 Volume as Percentage of 2019 Volume
Through December 20, 2020



Source: HVCB analysis based on data from DBEDT
Note: Passenger volume figures include both visitors and residents.

Domestic by Island Month-to-Date and Year-to-Date Daily Passenger Volume

2020 Volume versus 2019 Volume
Through December 20, 2020

December 2020 (Month-to-Date through December 20)

	2020	2019	Volume Change	Percent Change
Honolulu	87,767	251,523	-163,756	-65.1%
Maui County	47,896	123,034	-75,138	-61.1%
Island of Hawai'i	22,968	48,677	-25,709	-52.8%
Kaua'i	2,067	40,386	-38,319	-94.9%
Total	160,698	463,620	-302,922	-65.3%

2020 (Year-to-Date through December 20)

	2020	2019	Volume Change	Percent Change
Honolulu	1,444,485	4,463,887	-3,019,402	-67.6%
Maui County	581,656	2,168,635	-1,586,979	-73.2%
Island of Hawai'i	287,218	938,996	-651,778	-69.4%
Kaua'i	184,349	740,241	-555,892	-75.1%
Total	2,497,708	8,311,759	-5,814,052	-69.9%

Source: HVCB analysis based on data from DBEDT
Note: Passenger volume figures include both visitors and residents. Total includes other international passengers. 2020 includes one additional day due to Leap Year (February 29th, 2020).

News Highlights

December 21, 2020

Hawaii News Now: [Mayor Caldwell worries jump in cases will force city back to tier 1 by year's end](#)

Honolulu Star Advertiser: [Hawaii records 1 additional coronavirus-related death on Oahu and 204 new infections statewide](#)

Honolulu Star Advertising: [Lackluster Hawaii tourism widens losses for hotels](#)

KITV4: [Hawaii Representative Lisa Marten talks about Pfizer vaccine's potential side effects](#)

Honolulu Civil Beat: [Safe Travels Fails To Lure Many Travelers From Japan To Hawaii](#)

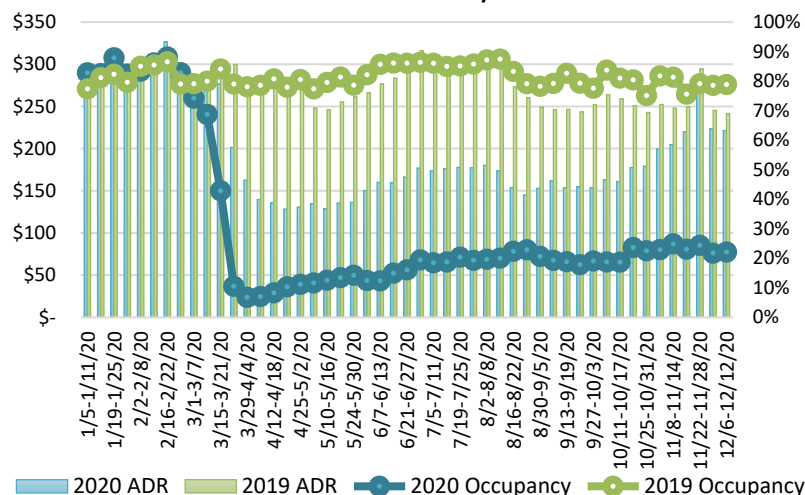
USA Today: ['Desperately needed': Travel industry praises COVID-19 stimulus package after months-long wait](#)

Travel Pulse: [Reimagining Travel in a Post-COVID-19 World](#)

Associated Press: [Mostly virus-free Kauai hit by pandemic after travel resumes](#)

Fortune: [How Hawaii's COVID-19 testing program could serve as the blueprint for a broader reopening of international travel](#)

State of Hawai'i Hotel Performance by Week - 2020 vs 2019



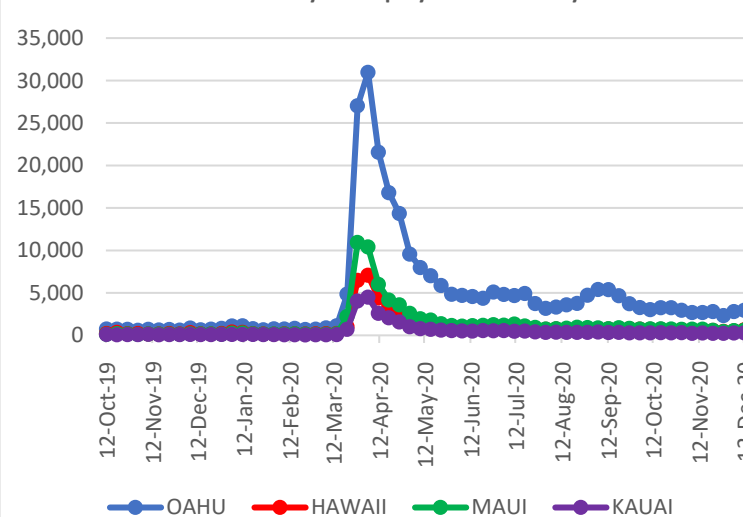
Source: STR, Inc. © Copyright 2020 Hawai'i Tourism Authority

Hawaii Hotel Performance Info:

For the week of December 06 – December 12, 2020

	Occupancy	ADR	RevPAR
State of Hawaii	22.1%	\$ 221.42	\$ 48.94
Oahu	22.8%	\$ 159.96	\$ 36.47
Maui County	22.7%	\$ 346.67	\$ 78.73
Kauai County	14.1%	\$ 170.67	\$ 24.08
Island of Hawaii	23.3%	\$ 232.13	\$ 54.09

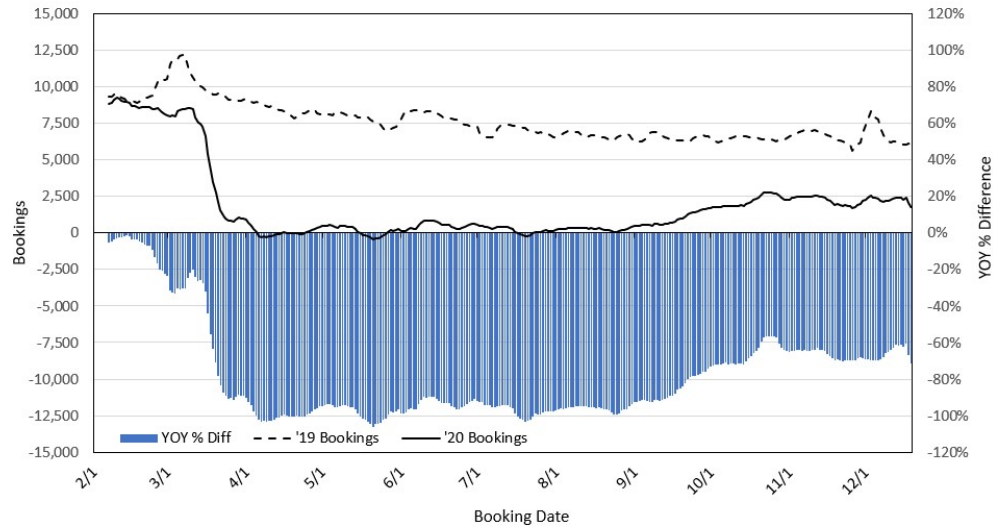
2020 Initial Weekly Unemployment Claims by Island



Weekly Unemployment Initial Claims: December 12, 2020

State of Hawaii	4,654
C&C of Oahu	2,944
Hawaii County	632
Maui County	604
Kauai County	289
Agent (filed in Hawaii against another state)	185

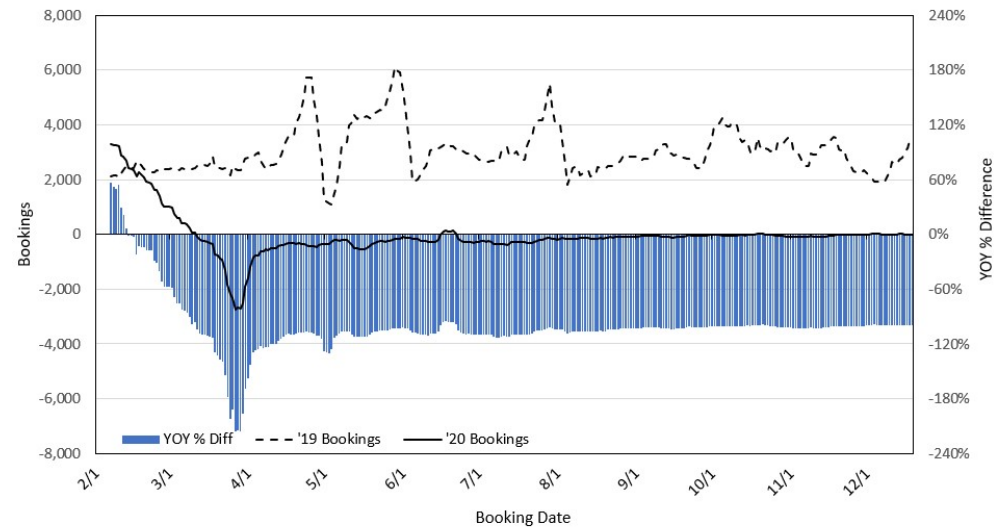
Travel Agency Bookings to Hawaii for Future Arrivals* Based on a 7-day Moving Average, 2020 vs 2019 U.S.



*Future Arrivals refers to all arrivals that are 'future' relative to the referenced booking date.
Source: Global Agency Pro

Update: Dec 19, 2020

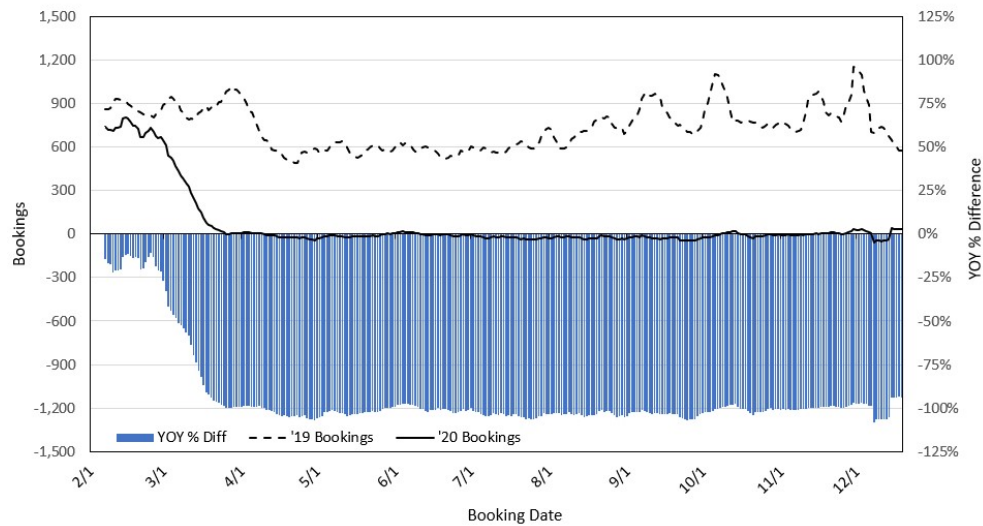
Travel Agency Bookings to Hawaii for Future Arrivals* Based on a 7-day Moving Average, 2020 vs 2019 Japan



*Future Arrivals refers to all arrivals that are 'future' relative to the referenced booking date.
Source: Global Agency Pro

Update: Dec 19, 2020

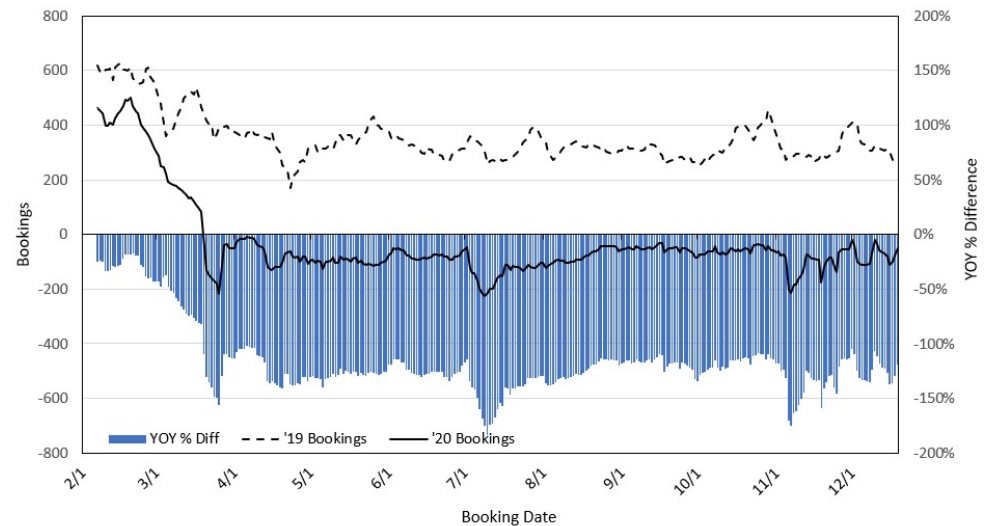
Travel Agency Bookings to Hawaii for Future Arrivals* Based on a 7-day Moving Average, 2020 vs 2019 Canada



*Future Arrivals refers to all arrivals that are 'future' relative to the referenced booking date.
Source: Global Agency Pro

Update: Dec 19, 2020

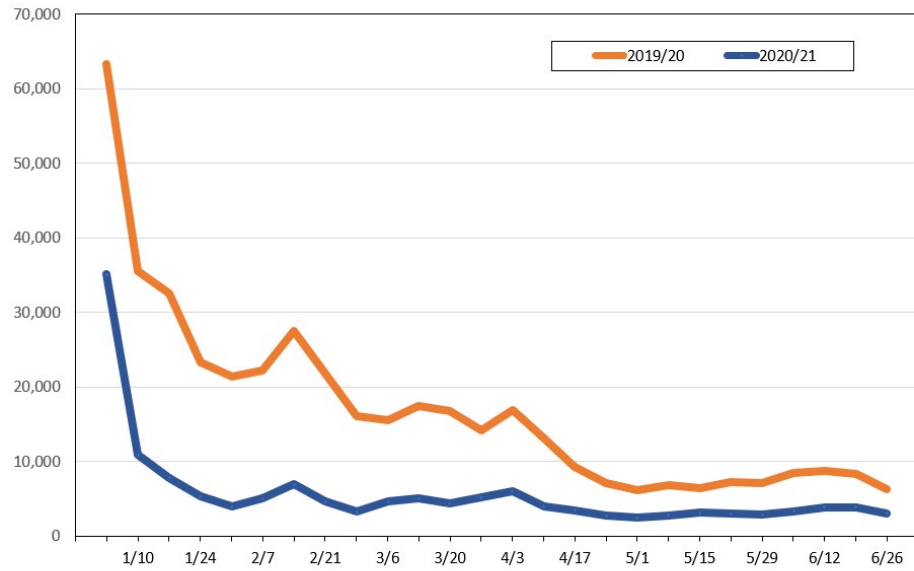
Travel Agency Bookings to Hawaii for Future Arrivals* Based on a 7-day Moving Average, 2020 vs 2019 Australia



*Future Arrivals refers to all arrivals that are 'future' relative to the referenced booking date.
Source: Global Agency Pro

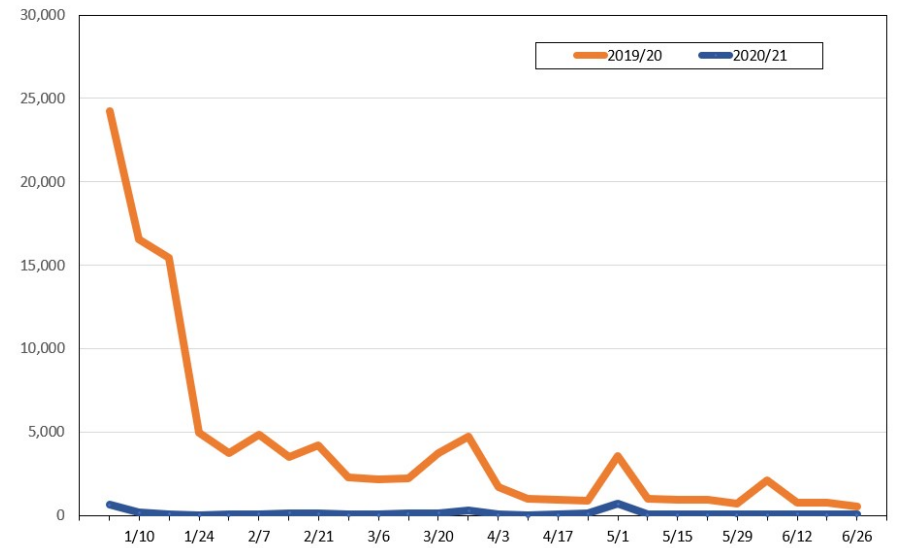
Update: Dec 19, 2020

Travel Agency Weekly Bookings for Future Travel to Hawai'i as of December 19, 2020
U.S.



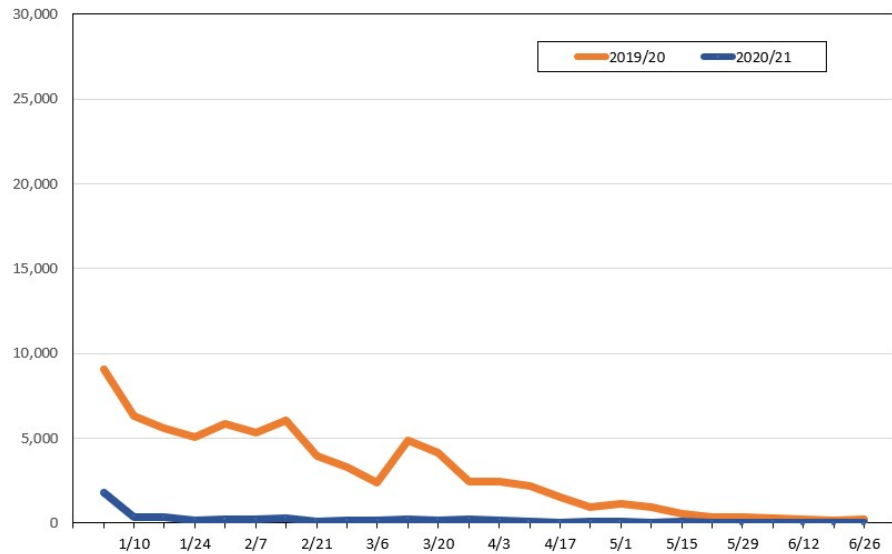
Source: Global Agency Pro, as of December 19, 2020

Travel Agency Weekly Bookings for Future Travel to Hawai'i as of December 19, 2020
Japan



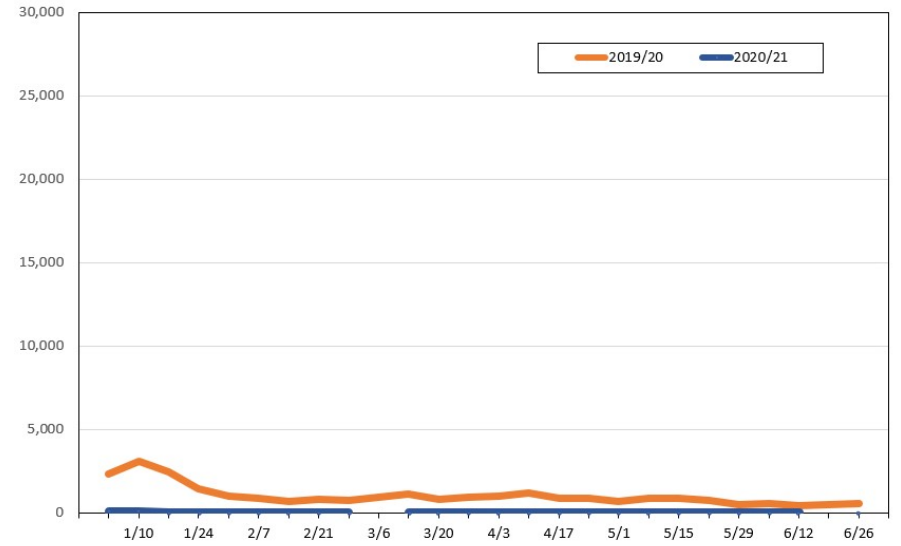
Source: Global Agency Pro, as of December 19, 2020

Travel Agency Weekly Bookings for Future Travel to Hawai'i as of December 19, 2020
Canada



Source: Global Agency Pro, as of December 19, 2020

Travel Agency Weekly Bookings for Future Travel to Hawai'i as of December 19, 2020
Australia



Source: Global Agency Pro, as of December 19, 2020