

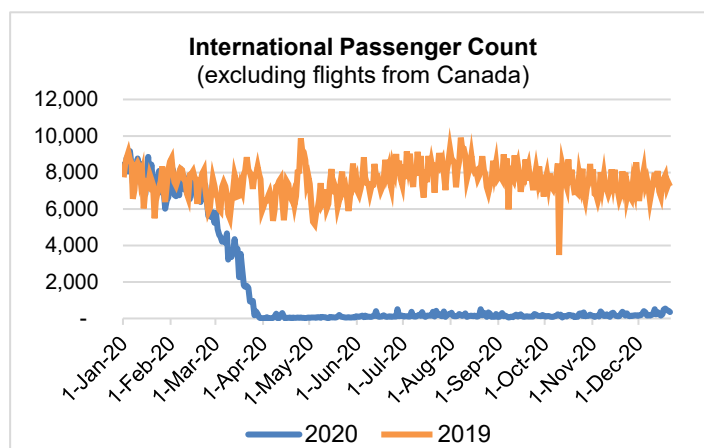
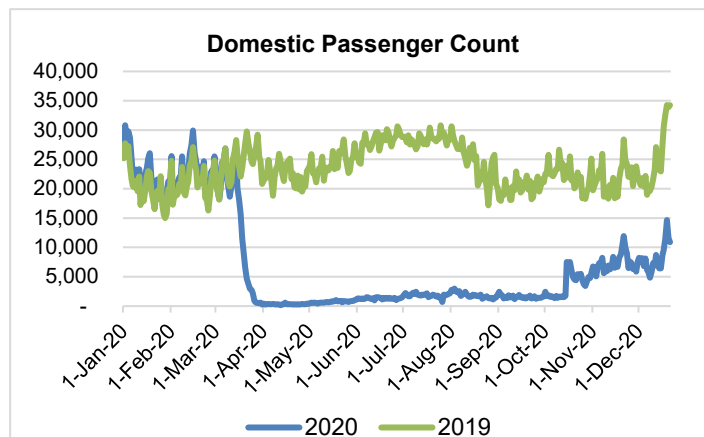
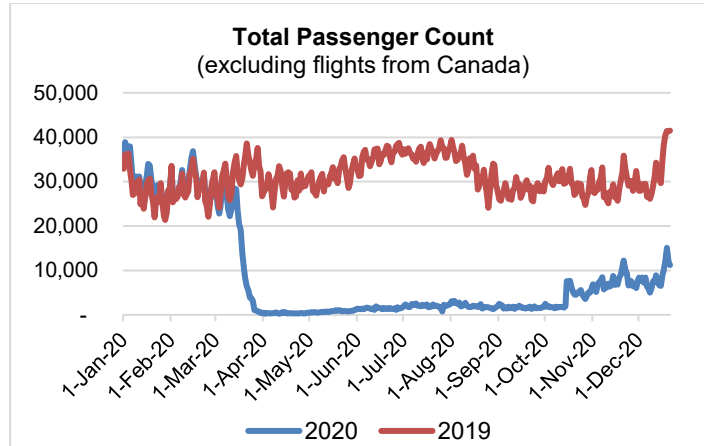
# HTA COVID-19 UPDATE

(Issued: 12/22/20 @ 4:30pm)

Reason for Trip by Arrival Airport - Transpacific Screened Passengers as of 12/21/20	Honolulu (HNL)	Kahului (OGG)	Kona (KOA)	Lihue (LIH)	Grand Total
Airline Crew	490	228	109	8	835
Connecting Flight (Transit)	327	6	2	0	335
Corporate Meeting	4	0	0	0	4
Essential Worker	48	16	11	0	75
Honeymoon	11	11	2	0	24
Incentive Trip	1	0	0	0	1
Intended Resident	94	22	20	4	140
Military or Federal Government	90	3	0	0	93
Other	37	11	10	0	58
Other Business	28	22	3	0	53
Pleasure/Vacation	2,392	2,440	1,279	8	6,119
Returning Resident	1,189	157	130	25	1,501
To Attend School	10	0	0	0	10
To Get Married	5	2	2	0	9
Transit	4	0	0	0	4
Visiting Friends or Relatives	2,024	465	368	13	2,870
<b>Grand Total</b>	<b>6,754</b>	<b>3,383</b>	<b>1,936</b>	<b>58</b>	<b>12,131</b>

**Source:** Safe Travels program developed by the State of Hawaii Office of Enterprise Technology Services

**Note:** The data is preliminary and subject to change



## Daily Passenger Count Table

12/21/2020	Domestic	International	Total
Oahu	6176	350	6526
Maui	2992		2992
Island of Hawaii	1670		1670
Kauai	48		48
State	10886	350	11236

## Novel Coronavirus in Hawaii

### COVID-19 Positive Cases

Cumulative totals as of 12:00pm on December 22, 2020

Total Confirmed Cases	20,417* (66 new)
Hawaii	1,822
Kauai	138
Lanai	106
Maui	792†
Molokai	22
Oahu	17,209
Out of State	328
Pending	0
Required Hospitalization	1415‡
Hawaii Deaths	282
Cases in the past 14 days	1,700**

### Footnotes for COVID-19 Cases

\*As a result of updated information, one case on Hawaii and one case on Oahu were removed from the counts.

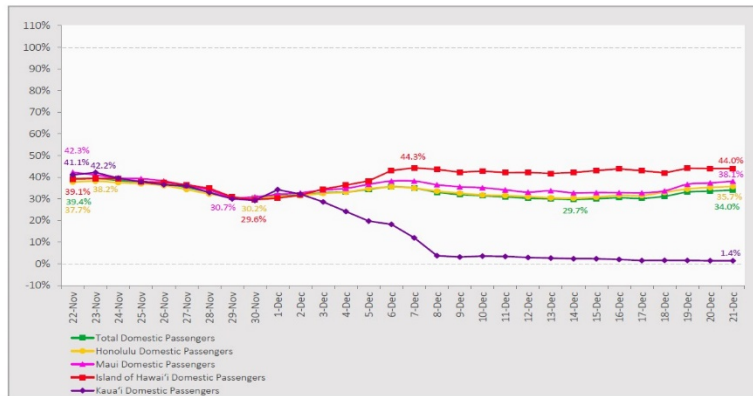
\*\*Using cases reported in the past 14 days provides a rough approximation of the number of cases currently meeting criteria for isolation. This proxy number for "active cases" resolves classification issues for cases unable to be reached or who are out of jurisdiction, for whom precise release from isolation date may not be possible to determine. It is also not influenced by lags in data entry. (This total does not include Hawaii residents diagnosed outside of Hawaii)

‡Includes Hawaii residents hospitalized out of state.

## 7-Day Domestic by Island Moving Average Daily Passenger Volume

2020 Volume as Percentage of 2019 Volume

Through December 21, 2020



Source: HVCB analysis based on data from DBEDT  
Note: Passenger volume figures include both visitors and residents.

## Domestic by Island Month-to-Date and Year-to-Date Daily Passenger Volume

2020 Volume versus 2019 Volume

Through December 21, 2020

December 2020 (Month-to-Date through December 21)

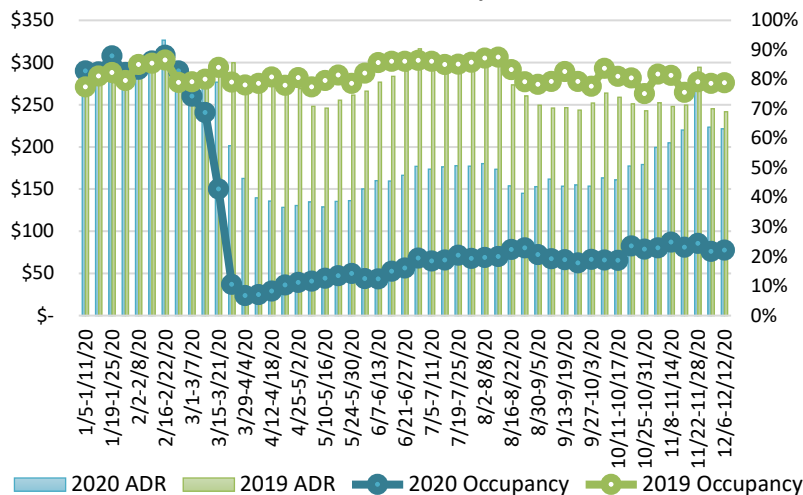
	2020	2019	Volume Change	Percent Change
Honolulu	93,943	268,685	-174,742	-65.0%
Maui County	50,888	132,610	-81,722	-61.6%
Island of Hawai'i	24,595	52,959	-28,364	-53.6%
Kaua'i	1,993	43,631	-41,638	-95.4%
Total	171,419	497,885	-326,466	-65.6%

2020 (Year-to-Date through December 21)

	2020	2019	Volume Change	Percent Change
Honolulu	1,450,661	4,481,049	-3,030,388	-67.6%
Maui County	584,648	2,178,211	-1,593,563	-73.2%
Island of Hawai'i	288,845	943,278	-654,433	-69.4%
Kaua'i	184,275	743,486	-559,211	-75.2%
Total	2,508,429	8,346,024	-5,837,595	-69.9%

Source: HVCB analysis based on data from DBEDT  
Note: Passenger volume figures include both visitors and residents. Total includes other international passengers. 2020 includes one additional day due to Leap Year (February 29th, 2020).

## State of Hawai'i Hotel Performance by Week - 2020 vs 2019



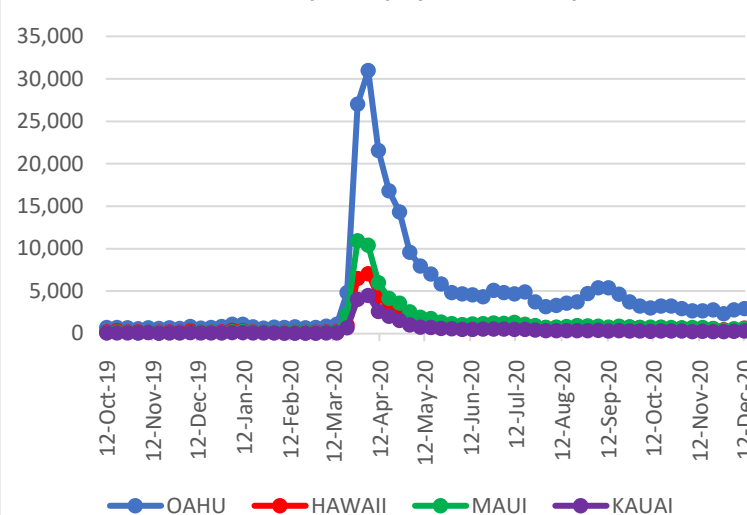
Source: STR, Inc. © Copyright 2020 Hawai'i Tourism Authority

## Hawaii Hotel Performance Info:

For the week of December 06 – December 12, 2020

	Occupancy	ADR	RevPAR
State of Hawaii	22.1%	\$ 221.42	\$ 48.94
Oahu	22.8%	\$ 159.96	\$ 36.47
Maui County	22.7%	\$ 346.67	\$ 78.73
Kauai County	14.1%	\$ 170.67	\$ 24.08
Island of Hawaii	23.3%	\$ 232.13	\$ 54.09

## 2020 Initial Weekly Unemployment Claims by Island



## Weekly Unemployment Initial Claims: December 12, 2020

State of Hawaii	4,654
C&C of Oahu	2,944
Hawaii County	632
Maui County	604
Kauai County	289
Agent (filed in Hawaii against another state)	185

## News Highlights

December 22, 2020

**Honolulu Star Advertiser:** [More doses of coronavirus vaccines arrive in Hawaii, many slated for neighbor islands](#)

**KHON2:** [Honolulu inmates will no longer be counted in City's COVID-19 tier count, says Mayor Caldwell](#)

**Honolulu Star Advertiser:** [Honolulu Festival 2021 canceled due to coronavirus pandemic](#)

**The Maui News:** [Police arrest 2 residents for quarantine, mask rule violations](#)

**The Garden Island:** [Doctors receive first COVID-19 vaccines on Kauai](#)

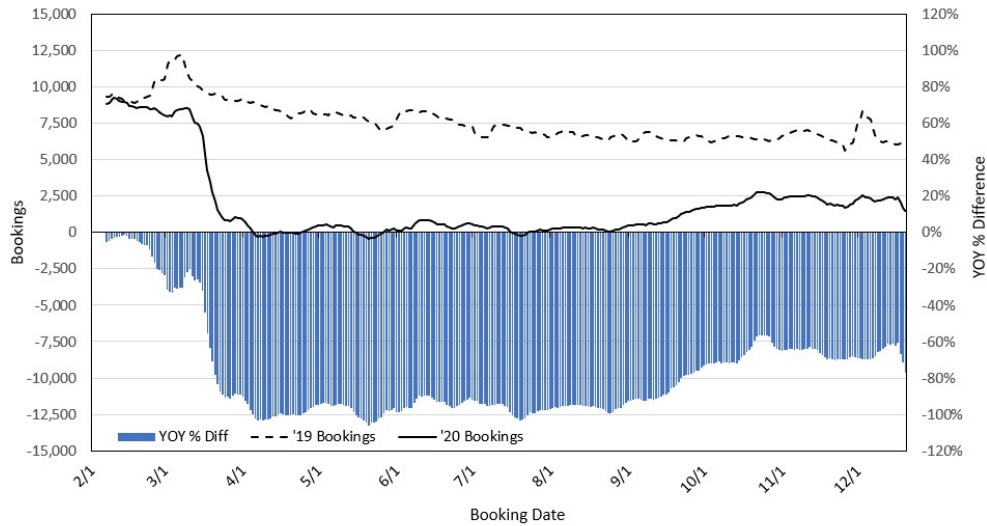
**Hawaii Public Radio:** [The Conversation: Will Canadian Visitors Return This Winter?](#)

**Pacific Business News:** [Hawaii hotels continued to see huge declines in November despite pre-travel testing program](#)

**Hawaii Magazine:** [What's Open and Closed on Christmas Day in Hawaii](#)

**TravelAge West:** [Forbes Travel Guide's Health Security Platform Aims to Be the Global Standard](#)

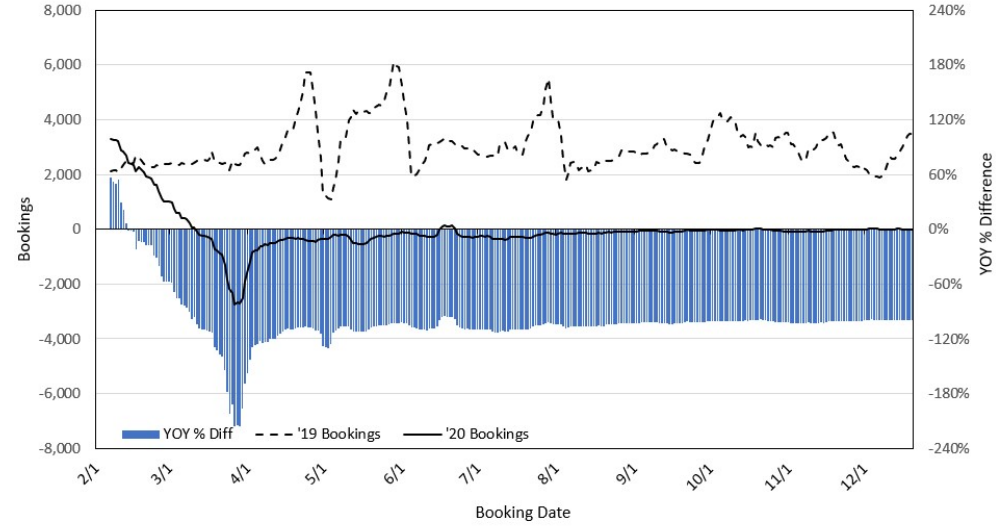
### Travel Agency Bookings to Hawaii for Future Arrivals\* Based on a 7-day Moving Average, 2020 vs 2019 U.S.



\*Future Arrivals refers to all arrivals that are 'future' relative to the referenced booking date.  
Source: Global Agency Pro

Update: Dec 20, 2020

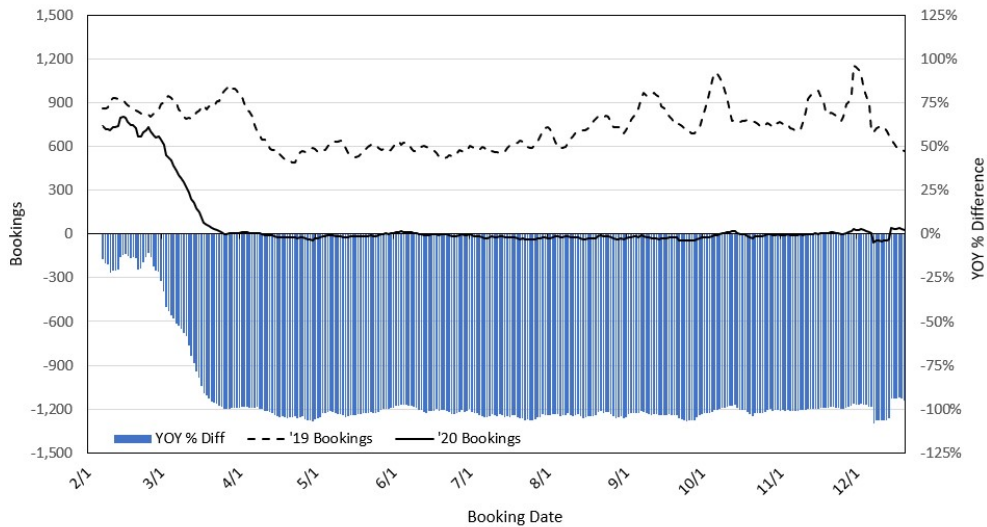
### Travel Agency Bookings to Hawaii for Future Arrivals\* Based on a 7-day Moving Average, 2020 vs 2019 Japan



\*Future Arrivals refers to all arrivals that are 'future' relative to the referenced booking date.  
Source: Global Agency Pro

Update: Dec 20, 2020

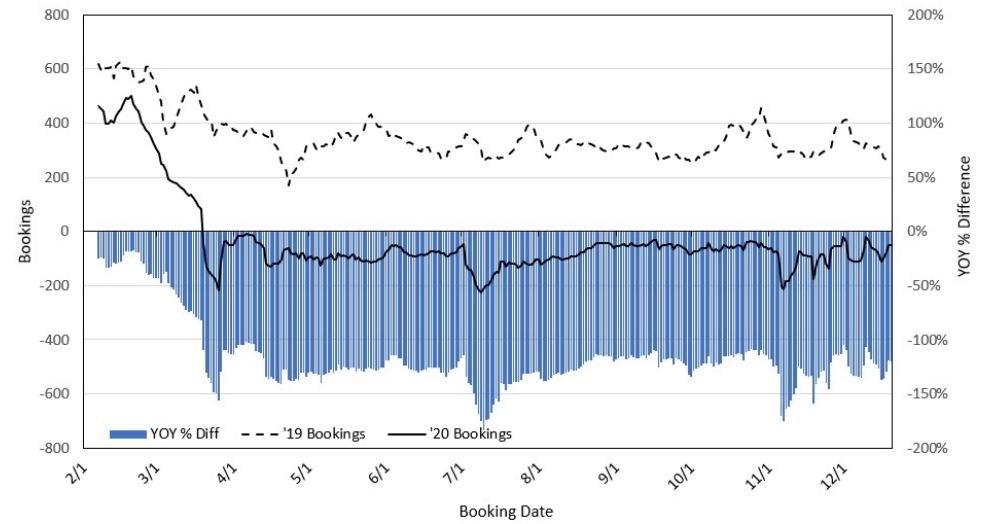
### Travel Agency Bookings to Hawaii for Future Arrivals\* Based on a 7-day Moving Average, 2020 vs 2019 Canada



\*Future Arrivals refers to all arrivals that are 'future' relative to the referenced booking date.  
Source: Global Agency Pro

Update: Dec 20, 2020

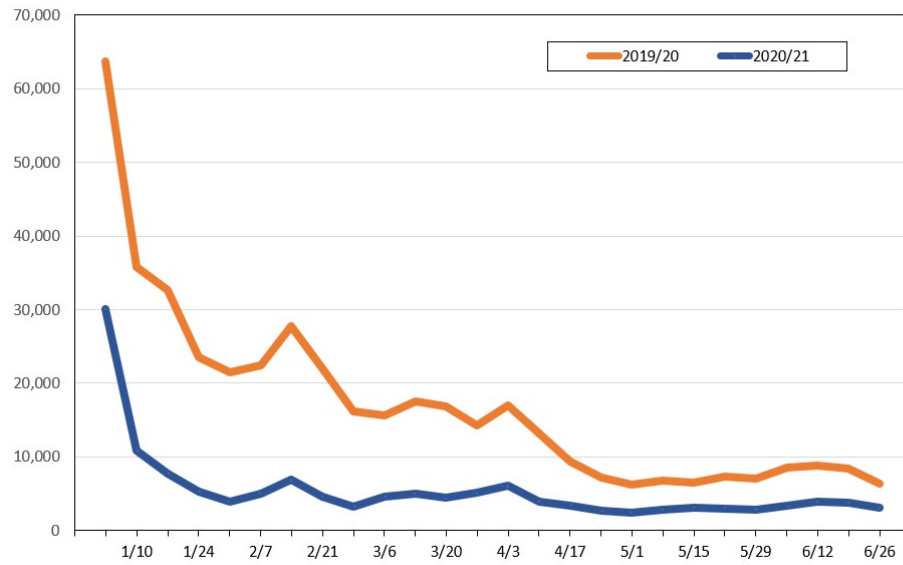
### Travel Agency Bookings to Hawaii for Future Arrivals\* Based on a 7-day Moving Average, 2020 vs 2019 Australia



\*Future Arrivals refers to all arrivals that are 'future' relative to the referenced booking date.  
Source: Global Agency Pro

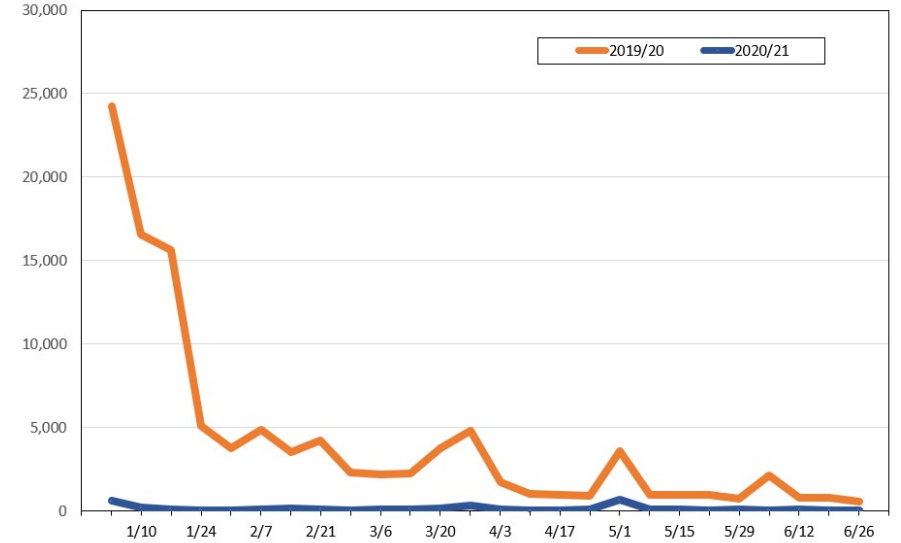
Update: Dec 20, 2020

**Travel Agency Weekly Bookings for Future Travel to Hawai'i as of December 20, 2020**  
U.S.



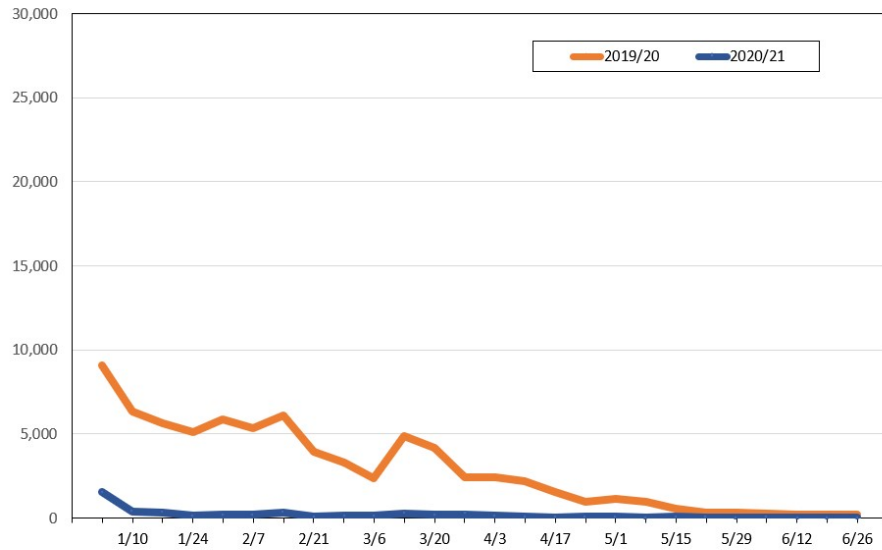
Source: Global Agency Pro, as of December 20, 2020

**Travel Agency Weekly Bookings for Future Travel to Hawai'i as of December 20, 2020**  
Japan



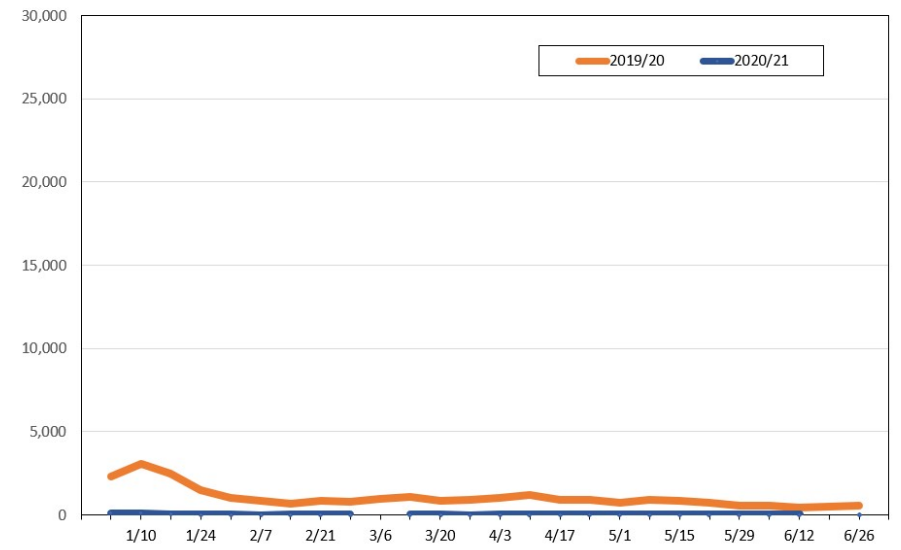
Source: Global Agency Pro, as of December 20, 2020

**Travel Agency Weekly Bookings for Future Travel to Hawai'i as of December 20, 2020**  
Canada



Source: Global Agency Pro, as of December 20, 2020

**Travel Agency Weekly Bookings for Future Travel to Hawai'i as of December 20, 2020**  
Australia



Source: Global Agency Pro, as of December 20, 2020