

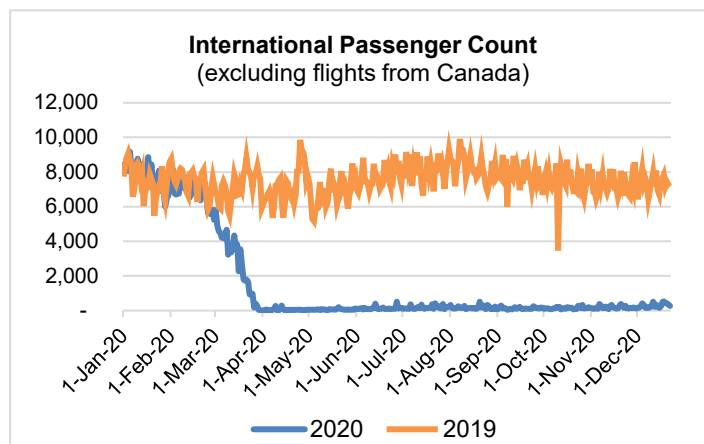
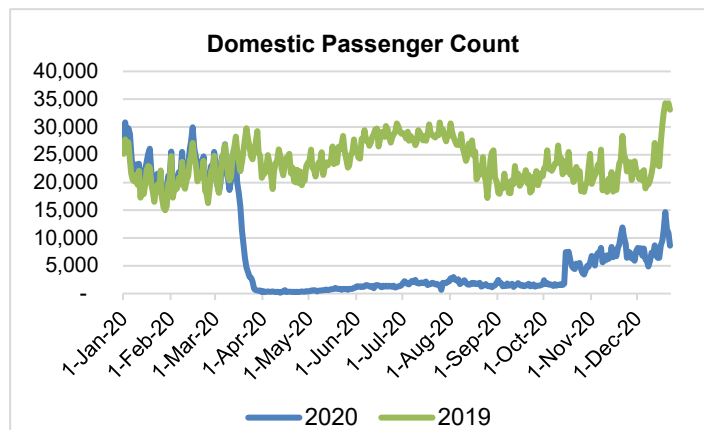
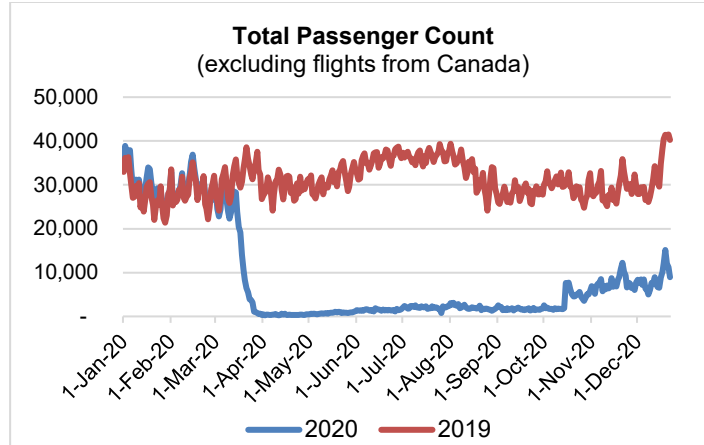
HTA COVID-19 UPDATE

(Issued: 12/23/20 @ 4:30pm)

Reason for Trip by Arrival Airport - Transpacific Screened Passengers as of 12/22/20	Honolulu (HNL)	Kahului (OGG)	Kona (KOA)	Lihue (LIH)	Grand Total
Airline Crew	466	244	116	2	828
Connecting Flight (Transit)	234	12	1	0	247
Corporate Meeting	1	0	0	0	1
Essential Worker	43	17	12	5	77
Honeymoon	6	11	4	0	21
Incentive Trip	0	2	0	0	2
Intended Resident	86	13	12	1	112
Military or Federal Government	63	2	0	0	65
Other	36	24	9	1	70
Other Business	19	12	13	0	44
Pleasure/Vacation	1,804	1,977	958	3	4,742
Returning Resident	847	161	141	19	1,168
To Attend School	3	0	1	0	4
To Get Married	1	0	0	0	1
Transit	2	0	0	0	2
Visiting Friends or Relatives	1,673	407	350	27	2,457
Grand Total	5,284	2,882	1,617	58	9,841

Source: Safe Travels program developed by the State of Hawaii Office of Enterprise Technology Services

Note: The data is preliminary and subject to change



Daily Passenger Count Table

12/22/2020	Domestic	International	Total
Oahu	4706	277	4983
Maui	2495		2495
Island of Hawaii	1381		1381
Kauai	53		53
State	8635	277	8912

Novel Coronavirus in Hawaii

COVID-19 Positive Cases

Cumulative totals as of 12:00pm on December 23, 2020

Total Confirmed Cases	20,522* (107 new)
Hawaii	1,835
Kauai	138
Lanai	106
Maui	806†
Molokai	22
Oahu	17,277
Out of State	338
Pending	0
Required Hospitalization	1426‡
Hawaii Deaths	285
Cases in the past 14 days	1,723**

Footnotes for COVID-19 Cases

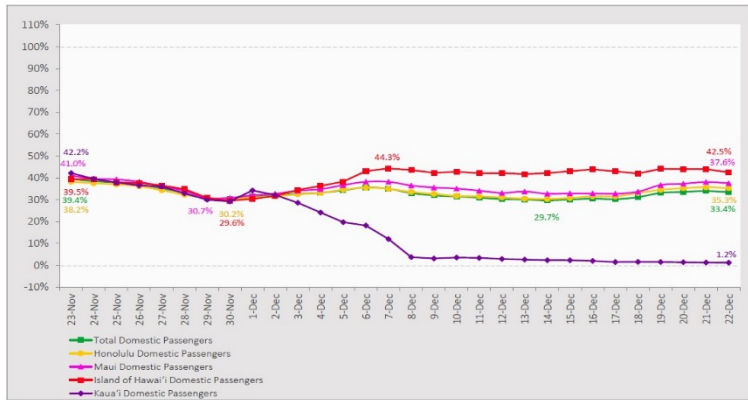
*As a result of updated information, one case on Maui and one case on Oahu were removed from the counts, and one case on Maui was recategorized to out-of-state.

**Using cases reported in the past 14 days provides a rough approximation of the number of cases currently meeting criteria for isolation. This proxy number for "active cases" resolves classification issues for cases unable to be reached or who are out of jurisdiction, for whom precise release from isolation date may not be possible to determine. It is also not influenced by lags in data entry. (This total does not include Hawaii residents diagnosed outside of Hawaii)

‡Includes Hawaii residents hospitalized out of state.

7-Day Domestic by Island Moving Average Daily Passenger Volume

2020 Volume as Percentage of 2019 Volume
Through December 22, 2020



Source: HVCB analysis based on data from DBEDT
Note: Passenger volume figures include both visitors and residents.

Domestic by Island Month-to-Date and Year-to-Date Daily Passenger Volume

2020 Volume versus 2019 Volume
Through December 22, 2020

December 2020 (Month-to-Date through December 22)

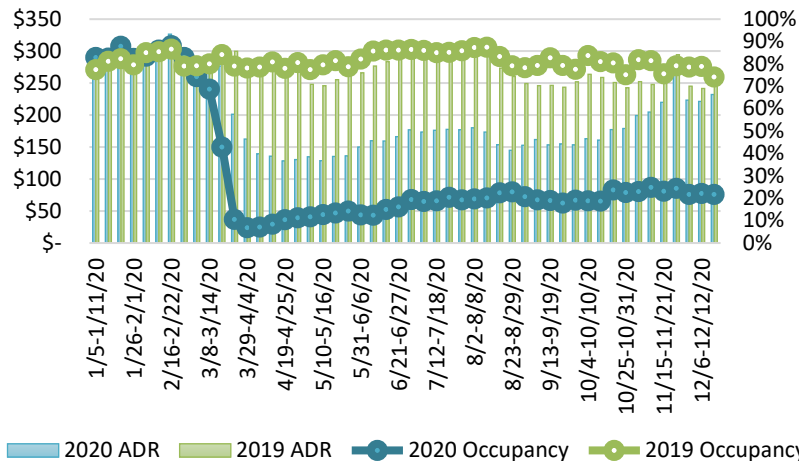
	2020	2019	Volume Change	Percent Change
Honolulu	98,649	285,892	-187,243	-65.5%
Maui County	53,383	141,694	-88,311	-62.3%
Island of Hawai'i	25,976	57,171	-31,195	-54.6%
Kaua'i	2,022	47,050	-45,028	-95.7%
Total	180,030	531,807	-351,777	-66.1%

2020 (Year-to-Date through December 22)

	2020	2019	Volume Change	Percent Change
Honolulu	1,455,367	4,498,256	-3,042,889	-67.6%
Maui County	587,143	2,187,295	-1,600,152	-73.2%
Island of Hawai'i	290,226	947,490	-657,264	-69.4%
Kaua'i	184,304	746,905	-562,601	-75.3%
Total	2,517,040	8,379,946	-5,862,907	-70.0%

Source: HVCB analysis based on data from DBEDT
Note: Passenger volume figures include both visitors and residents. Total includes other international passengers. 2020 includes one additional day due to Leap Year (February 29th, 2020).

State of Hawai'i Hotel Performance by Week - 2020 vs 2019



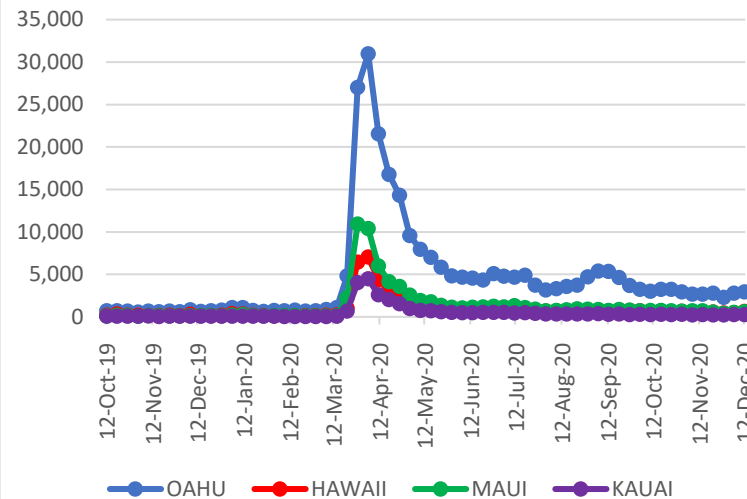
Source: STR, Inc. © Copyright 2020 Hawai'i Tourism Authority

Hawaii Hotel Performance Info:

For the week of December 13 – December 19, 2020

	Occupancy	ADR	RevPAR
State of Hawaii	21.6%	\$232.23	\$50.25
Oahu	21.6%	\$163.16	\$35.28
Maui County	23.6%	\$366.29	\$86.57
Kauai County	11.1%	\$155.76	\$17.26
Island of Hawaii	24.4%	\$261.62	\$63.95

2020 Initial Weekly Unemployment Claims by Island



Weekly Unemployment Initial Claims: December 12, 2020

State of Hawaii	4,654
C&C of Oahu	2,944
Hawaii County	632
Maui County	604
Kauai County	289
Agent (filed in Hawaii against another state)	185

News Highlights

December 23, 2020

Honolulu Star Advertiser:

[Editorial: Making tourism healthy again](#)

Hawaii News Now: [Do you need the COVID-19 vaccine if you've already had the virus? The CDC says yes.](#)

KHON2: [Gov. Ige reflects on 2020, tough decisions he made for Hawaii amid the pandemic](#)

The Maui News: [Maui County tops state in revenue per hotel room for month of November](#)

The Garden Island: [County announces two new cases of COVID-19](#)

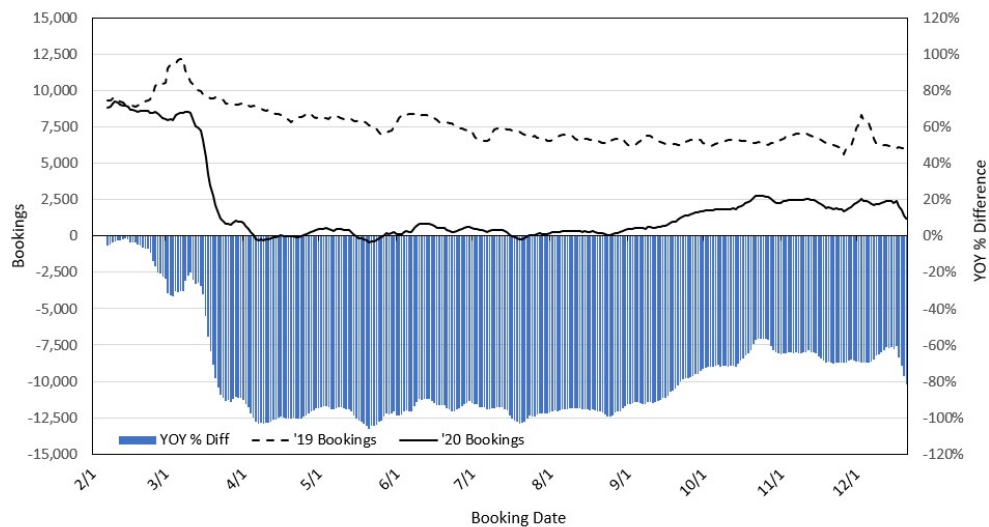
Pacific Business News: [Hawaii vacation rentals saw declines in occupancy, supply and demand during November](#)

USA Today: [Governors vaccinated, Christmas precautions, medical worker shortage: News from around our 50 states](#)

The Points Guy: [10 years later, American will give Charlotte-Honolulu a second try](#)

Travel + Leisure: [Vaccine Passports May Be the Future of Travel — Here's Everything You Need to Know](#)

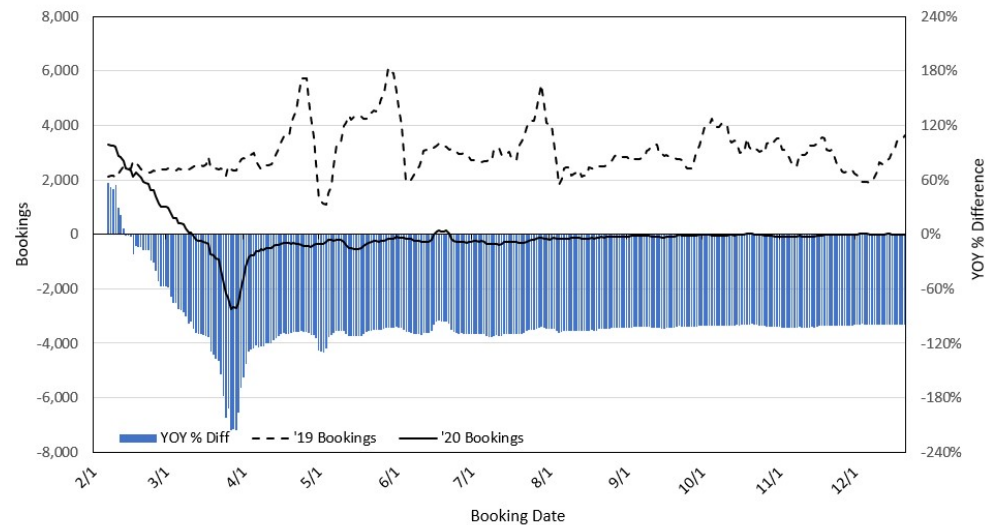
Travel Agency Bookings to Hawaii for Future Arrivals* Based on a 7-day Moving Average, 2020 vs 2019 U.S.



*Future Arrivals refers to all arrivals that are 'future' relative to the referenced booking date.
Source: Global Agency Pro

Update: Dec 21, 2020

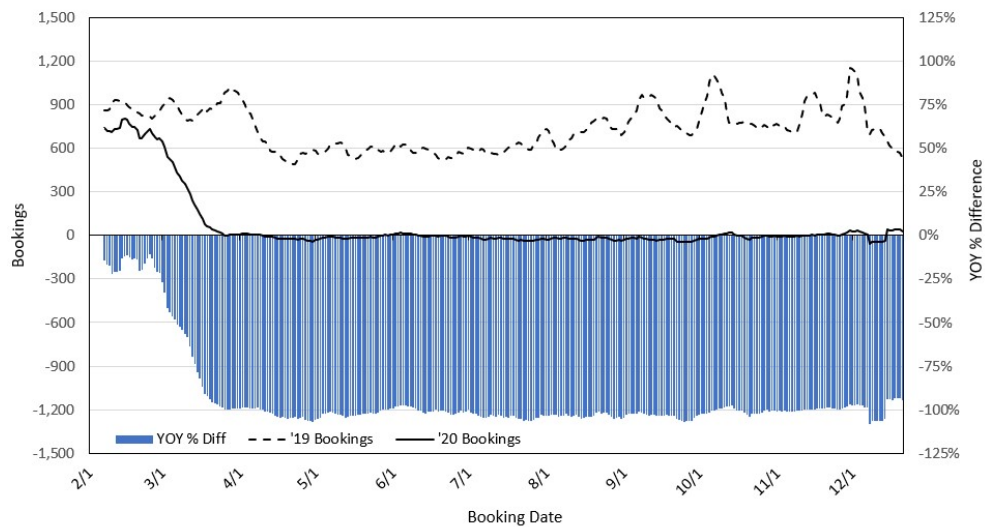
Travel Agency Bookings to Hawaii for Future Arrivals* Based on a 7-day Moving Average, 2020 vs 2019 Japan



*Future Arrivals refers to all arrivals that are 'future' relative to the referenced booking date.
Source: Global Agency Pro

Update: Dec 21, 2020

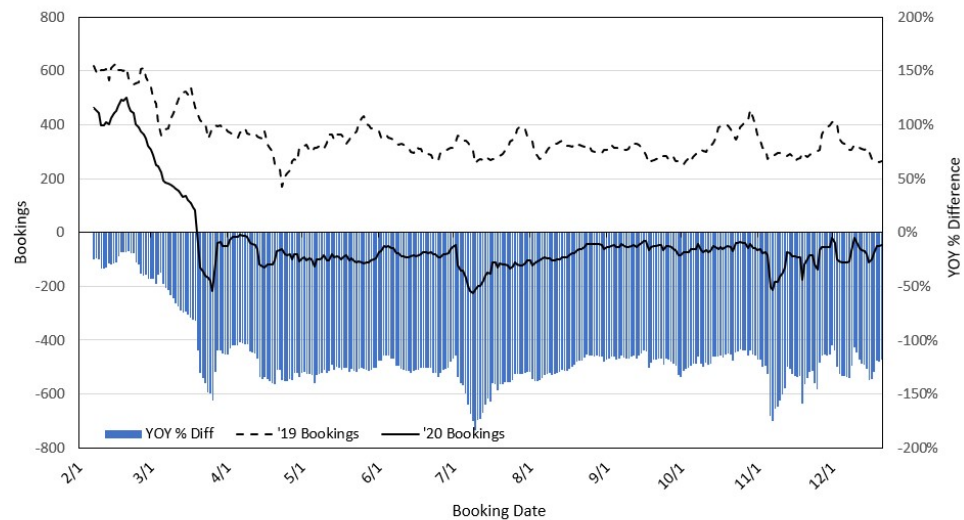
Travel Agency Bookings to Hawaii for Future Arrivals* Based on a 7-day Moving Average, 2020 vs 2019 Canada



*Future Arrivals refers to all arrivals that are 'future' relative to the referenced booking date.
Source: Global Agency Pro

Update: Dec 21, 2020

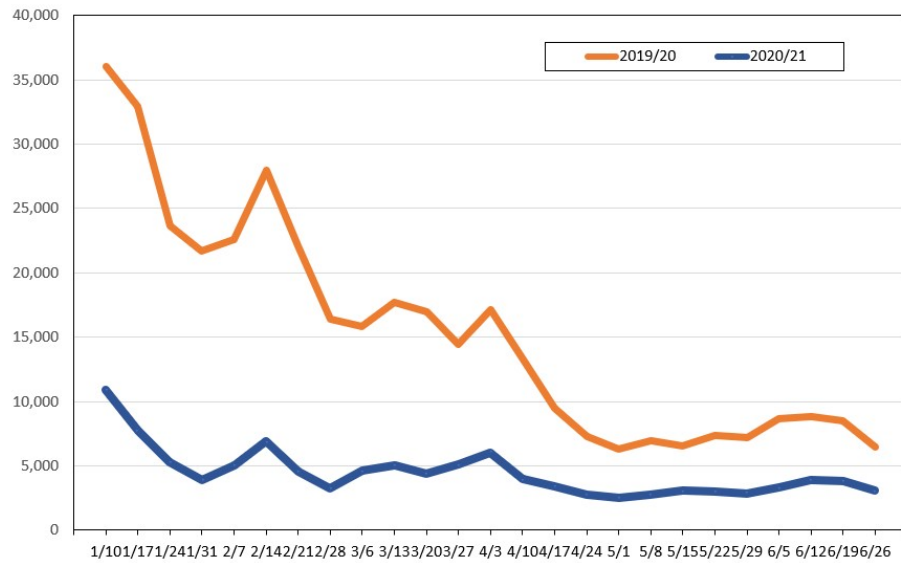
Travel Agency Bookings to Hawaii for Future Arrivals* Based on a 7-day Moving Average, 2020 vs 2019 Australia



*Future Arrivals refers to all arrivals that are 'future' relative to the referenced booking date.
Source: Global Agency Pro

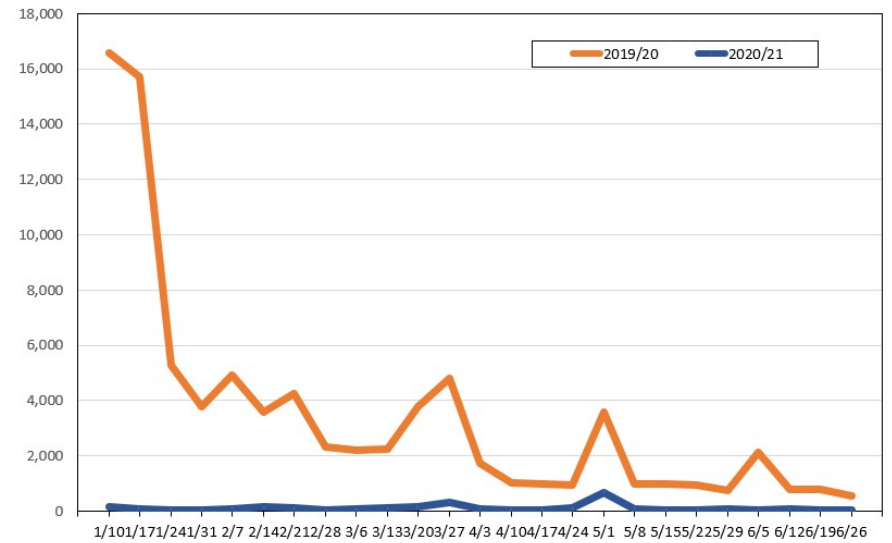
Update: Dec 21, 2020

Travel Agency Weekly Bookings for Future Travel to Hawai'i as of December 21, 2020
U.S.



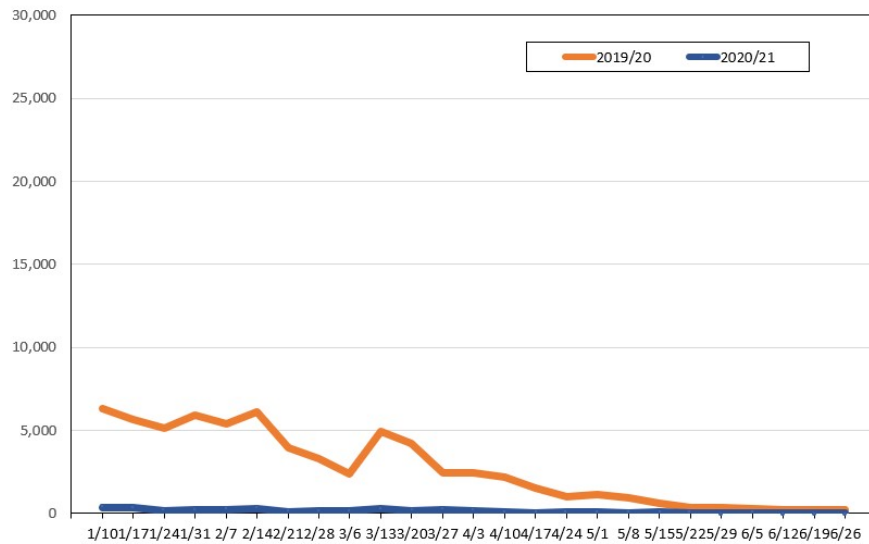
Source: Global Agency Pro, as of December 21, 2020

Travel Agency Weekly Bookings for Future Travel to Hawai'i as of December 21, 2020
Japan



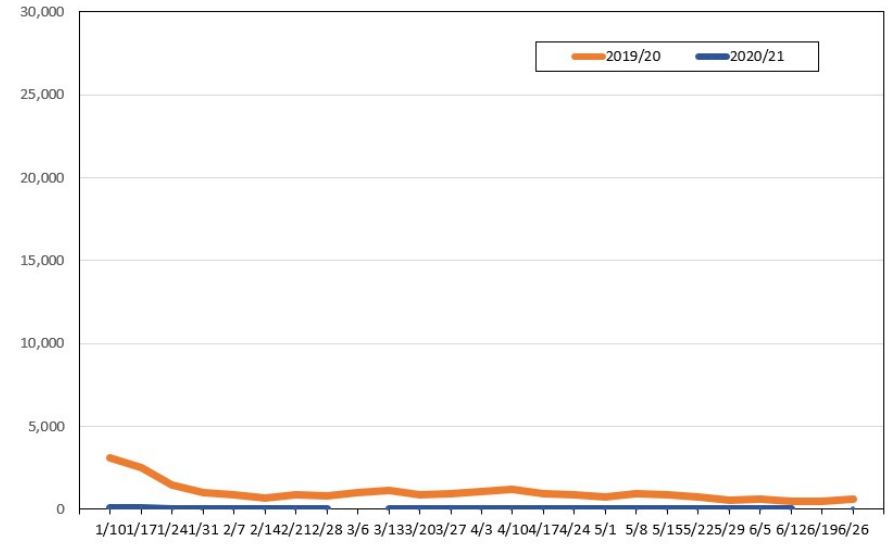
Source: Global Agency Pro, as of December 21, 2020

Travel Agency Weekly Bookings for Future Travel to Hawai'i as of December 21, 2020
Canada



Source: Global Agency Pro, as of December 21, 2020

Travel Agency Weekly Bookings for Future Travel to Hawai'i as of December 21, 2020
Australia



Source: Global Agency Pro, as of December 21, 2020