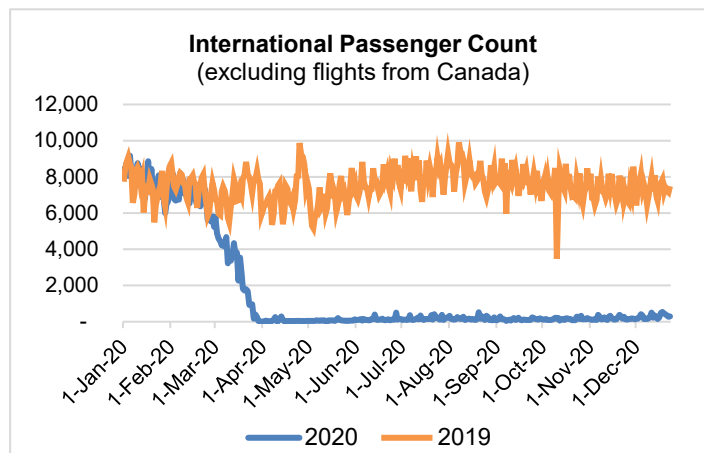
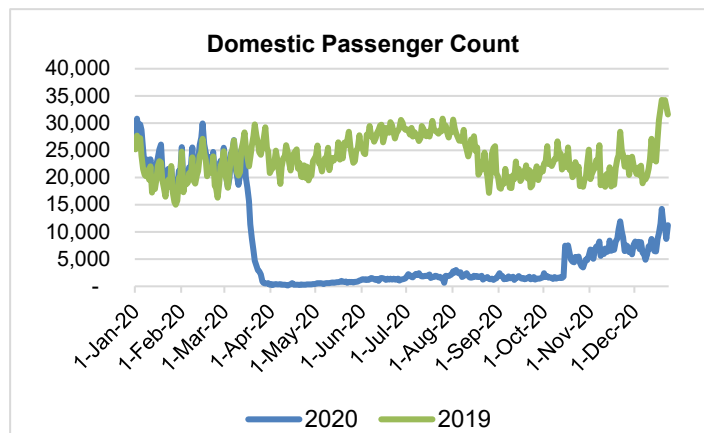
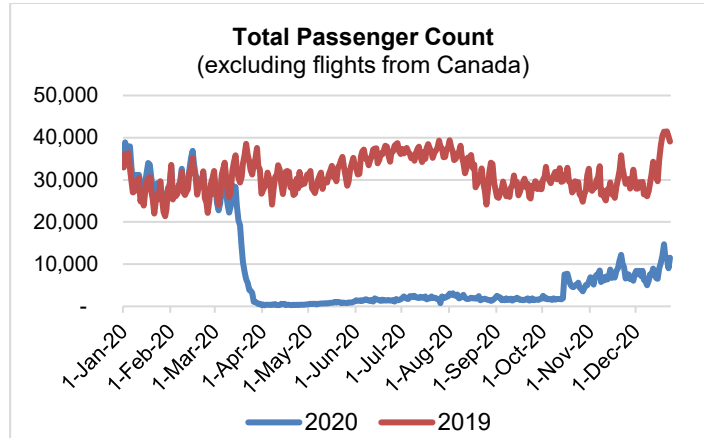


HTA COVID-19 UPDATE

(Issued: 12/24/20 @ 4:30pm)

Reason for Trip by Arrival Airport - Transpacific Screened Passengers as of 12/23/20	Honolulu (HNL)	Kahului (OGG)	Kona (KOA)	Lihue (LIH)	Grand Total
Airline Crew	484	230	103	13	830
Connecting Flight (Transit)	304	8	0	0	312
Corporate Meeting	1	0	0	0	1
Essential Worker	56	19	10	3	88
Honeymoon	10	5	10	0	25
Intended Resident	102	9	18	1	130
Military or Federal Government	43	1	0	0	44
Other	53	28	10	0	91
Other Business	31	16	6	0	53
Pleasure/Vacation	2,677	2,668	1,222	4	6,571
Returning Resident	1,078	150	126	21	1,375
To Attend School	11	1	2	0	14
To Get Married	1	2	1	0	4
Visiting Friends or Relatives	2,317	509	348	13	3,187
Grand Total	7,168	3,646	1,856	55	12,725

Source: Safe Travels program developed by the State of Hawaii Office of Enterprise Technology Services
Note: The data is preliminary and subject to change



Daily Passenger Count Table

12/23/2020	Domestic	International	Total
Oahu	6162	288	6450
Maui	3238		3238
Island of Hawaii	1772		1772
Kauai	40		40
State	11212	288	11500

Novel Coronavirus in Hawaii

COVID-19 Positive Cases

Cumulative totals as of 12:00pm on December 24, 2020

Total Confirmed Cases	20,650* (129 new)
Hawaii	1,848
Kauai	139
Lanai	106
Maui	838†
Molokai	22
Oahu	17,356
Out of State	341
Pending	0
Required Hospitalization	1436‡
Hawaii Deaths	285
Cases in the past 14 days	1,733**

Footnotes for COVID-19 Cases

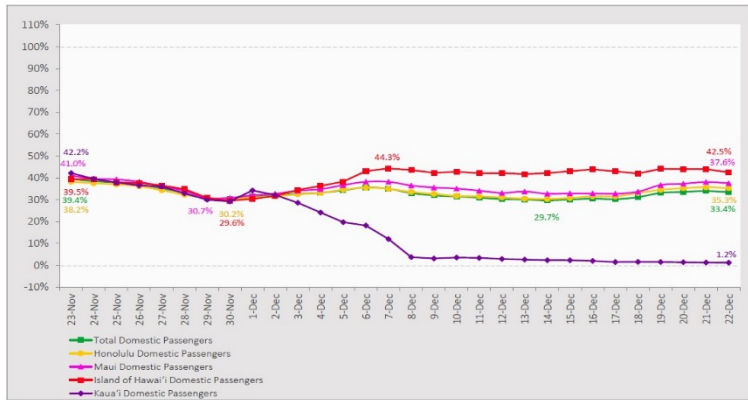
*As a result of updated information, one case on Maui was removed from the counts.

**Using cases reported in the past 14 days provides a rough approximation of the number of cases currently meeting criteria for isolation. This proxy number for "active cases" resolves classification issues for cases unable to be reached or who are out of jurisdiction, for whom precise release from isolation date may not be possible to determine. It is also not influenced by lags in data entry. (This total does not include Hawaii residents diagnosed outside of Hawaii)

‡Includes Hawaii residents hospitalized out of state.

7-Day Domestic by Island Moving Average Daily Passenger Volume

2020 Volume as Percentage of 2019 Volume
Through December 22, 2020



Source: HVCB analysis based on data from DBEDT
Note: Passenger volume figures include both visitors and residents.

Domestic by Island Month-to-Date and Year-to-Date Daily Passenger Volume

2020 Volume versus 2019 Volume
Through December 22, 2020

December 2020 (Month-to-Date through December 22)

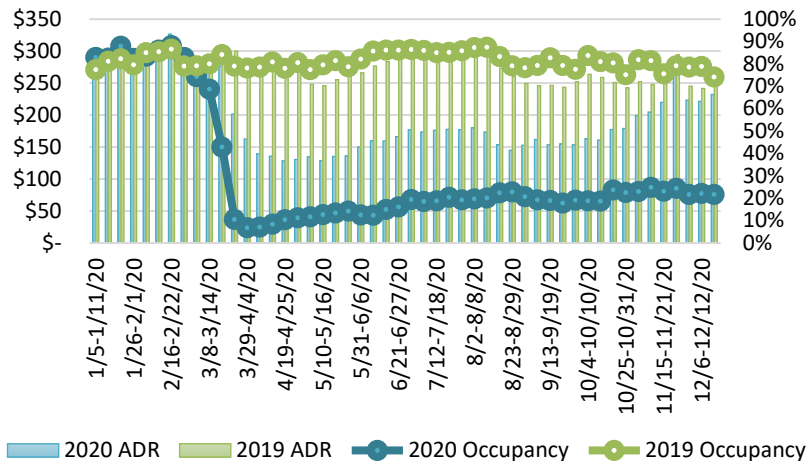
	2020	2019	Volume Change	Percent Change
Honolulu	98,649	285,892	-187,243	-65.5%
Maui County	53,383	141,694	-88,311	-62.3%
Island of Hawai'i	25,976	57,171	-31,195	-54.6%
Kaua'i	2,022	47,050	-45,028	-95.7%
Total	180,030	531,807	-351,777	-66.1%

2020 (Year-to-Date through December 22)

	2020	2019	Volume Change	Percent Change
Honolulu	1,455,367	4,498,256	-3,042,889	-67.6%
Maui County	587,143	2,187,295	-1,600,152	-73.2%
Island of Hawai'i	290,226	947,490	-657,264	-69.4%
Kaua'i	184,304	746,905	-562,601	-75.3%
Total	2,517,040	8,379,946	-5,862,907	-70.0%

Source: HVCB analysis based on data from DBEDT
Note: Passenger volume figures include both visitors and residents. Total includes other international passengers. 2020 includes one additional day due to Leap Year (February 29th, 2020).

State of Hawai'i Hotel Performance by Week - 2020 vs 2019



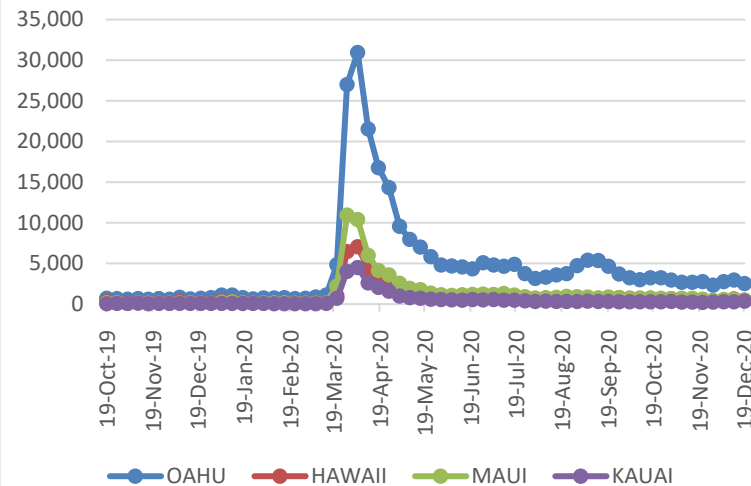
Source: STR, Inc. © Copyright 2020 Hawai'i Tourism Authority

Hawaii Hotel Performance Info:

For the week of December 13 – December 19, 2020

	Occupancy	ADR	RevPAR
State of Hawaii	21.6%	\$232.23	\$50.25
Oahu	21.6%	\$163.16	\$35.28
Maui County	23.6%	\$366.29	\$86.57
Kauai County	11.1%	\$155.76	\$17.26
Island of Hawaii	24.4%	\$261.62	\$63.95

2020 Initial Weekly Unemployment Claims by Island



Weekly Unemployment Initial Claims: December 19, 2020

State of Hawaii	4,015
C&C of Oahu	2,526
Hawaii County	477
Maui County	491
Kauai County	359
Agent (filed in Hawaii against another state)	162

News Highlights

December 24, 2020

Hawaii News Now: [Hawaii reports 129 new COVID-19 infections, pushing statewide total to 20,650](#)

Hawaii News Now: [Republicans block \\$2,000 virus stimulus checks despite Trump demand](#)

Hawaii News Now: [Share your aloha with Hawaii's healthcare and frontline workers this Christmas](#)

Hawaii News Now: [Governor delays January start of furloughs for state workers, but doesn't set new date](#)

Hawaii News Now: [Without a tourism rebound, half of Hawaii restaurants say they'll be permanently closed by April](#)

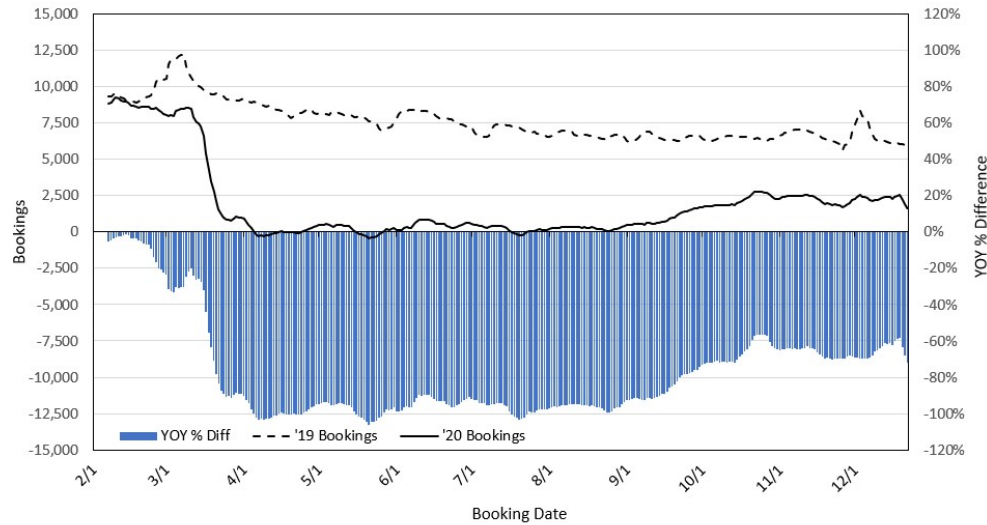
KITV: [Kaua'i County proposing mandatory post-travel COVID-19 test](#)

KITV: [Survey: 50% of Hawaii restaurants will close by April](#)

KHON: [State worker union files lawsuit against Gov. Ige on furloughs as delay is announced](#)

KHON: [Maui County begins vaccinating healthcare professionals](#)

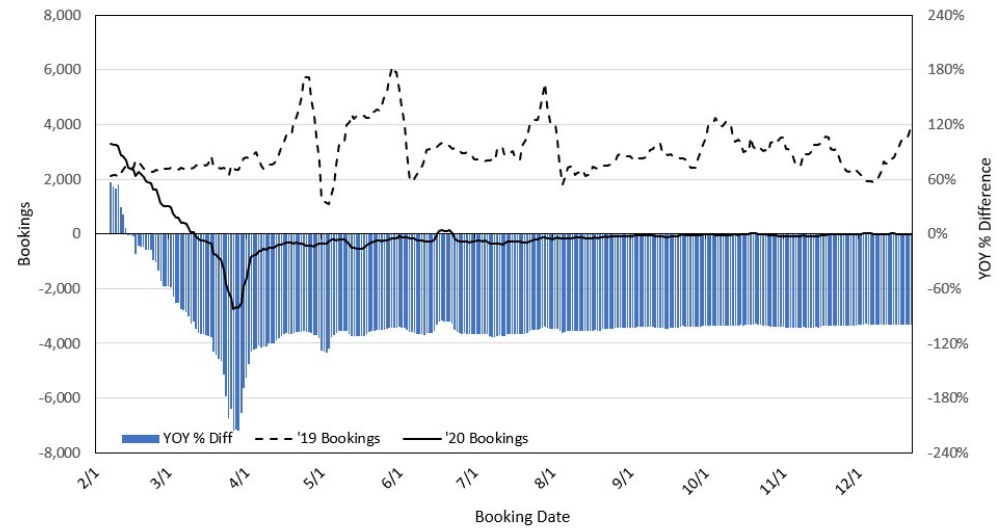
Travel Agency Bookings to Hawaii for Future Arrivals* Based on a 7-day Moving Average, 2020 vs 2019 U.S.



*Future Arrivals refers to all arrivals that are 'future' relative to the referenced booking date.
Source: Global Agency Pro

Update: Dec 22, 2020

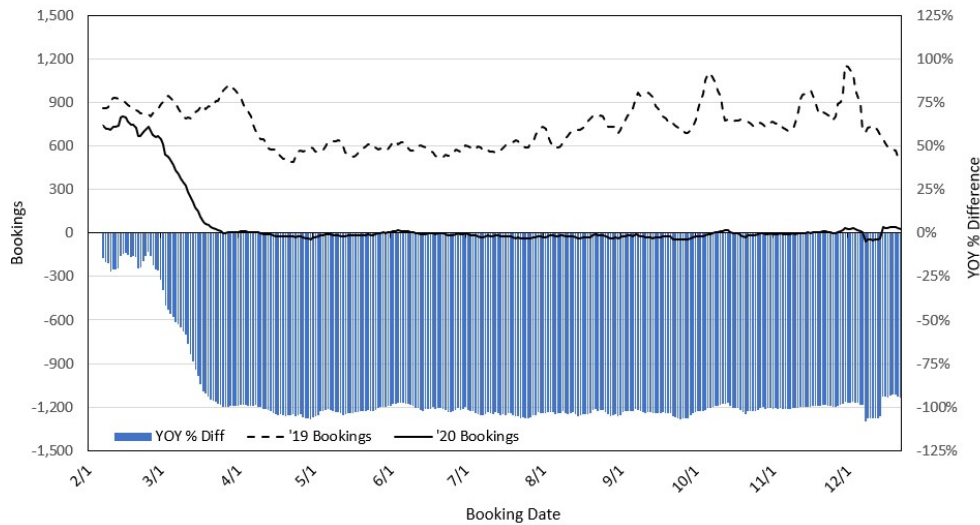
Travel Agency Bookings to Hawaii for Future Arrivals* Based on a 7-day Moving Average, 2020 vs 2019 Japan



*Future Arrivals refers to all arrivals that are 'future' relative to the referenced booking date.
Source: Global Agency Pro

Update: Dec 22, 2020

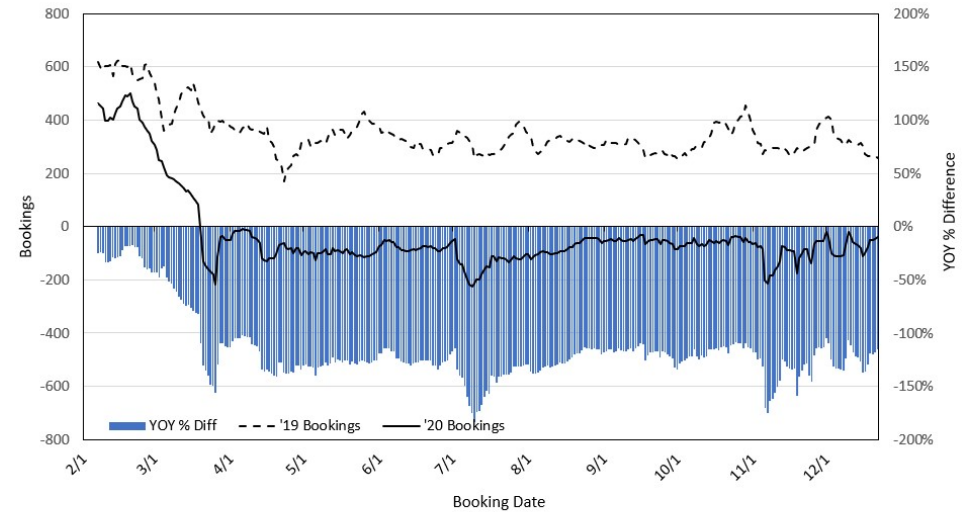
Travel Agency Bookings to Hawaii for Future Arrivals* Based on a 7-day Moving Average, 2020 vs 2019 Canada



*Future Arrivals refers to all arrivals that are 'future' relative to the referenced booking date.
Source: Global Agency Pro

Update: Dec 22, 2020

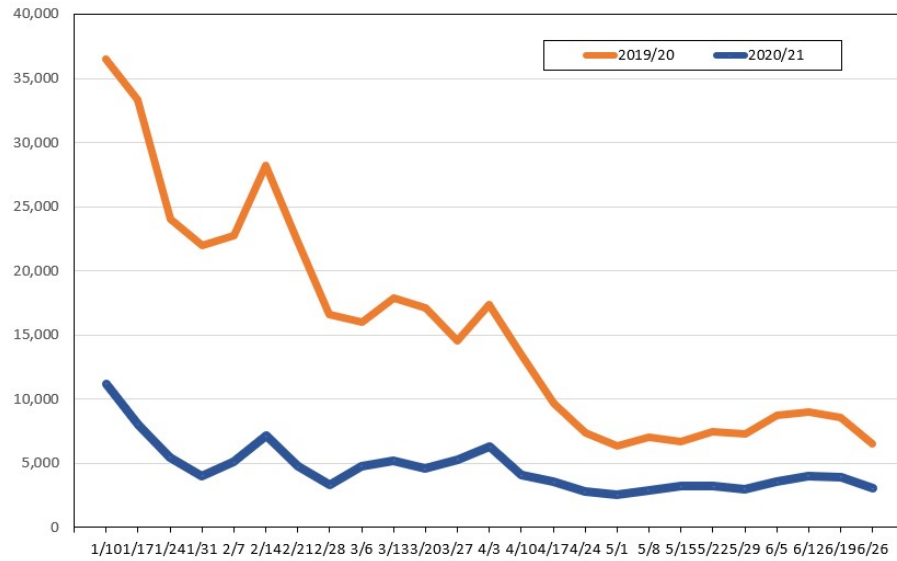
Travel Agency Bookings to Hawaii for Future Arrivals* Based on a 7-day Moving Average, 2020 vs 2019 Australia



*Future Arrivals refers to all arrivals that are 'future' relative to the referenced booking date.
Source: Global Agency Pro

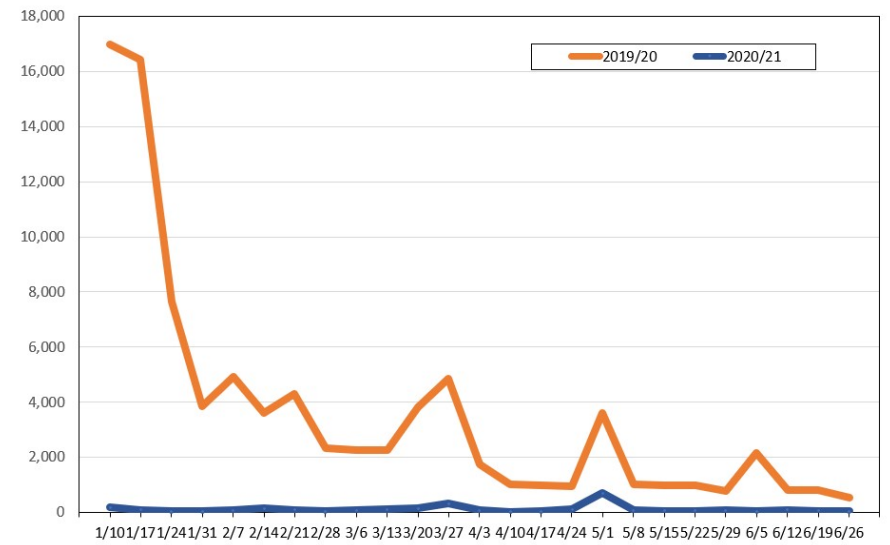
Update: Dec 22, 2020

Travel Agency Weekly Bookings for Future Travel to Hawai'i as of December 22, 2020
U.S.



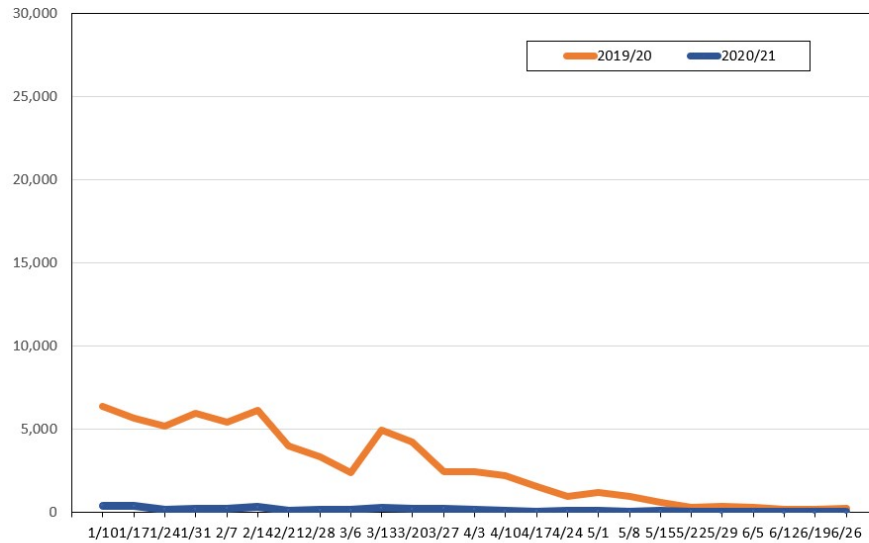
Source: Global Agency Pro, as of December 22, 2020

Travel Agency Weekly Bookings for Future Travel to Hawai'i as of December 22, 2020
Japan



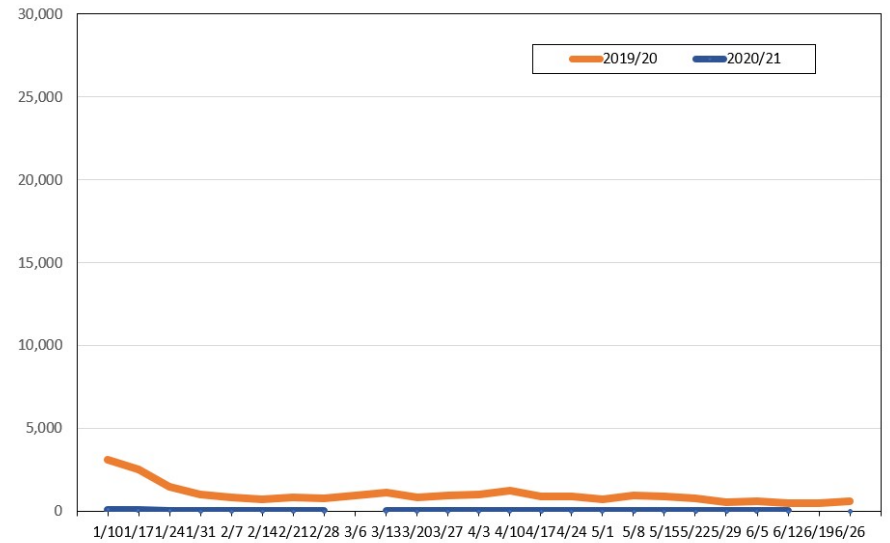
Source: Global Agency Pro, as of December 22, 2020

Travel Agency Weekly Bookings for Future Travel to Hawai'i as of December 22, 2020
Canada



Source: Global Agency Pro, as of December 22, 2020

Travel Agency Weekly Bookings for Future Travel to Hawai'i as of December 22, 2020
Australia



Source: Global Agency Pro, as of December 22, 2020