

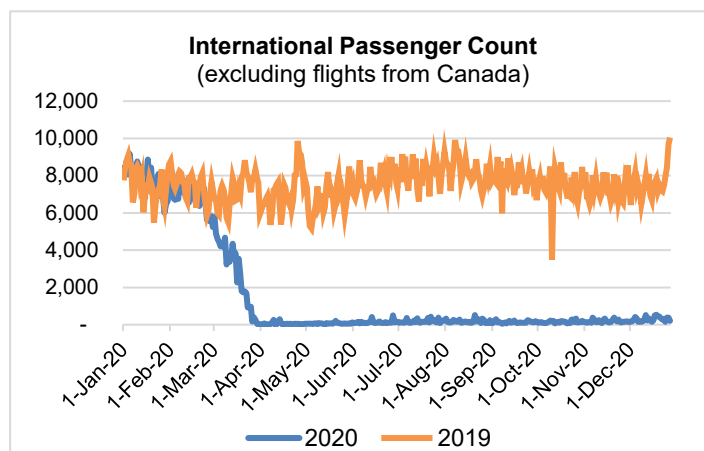
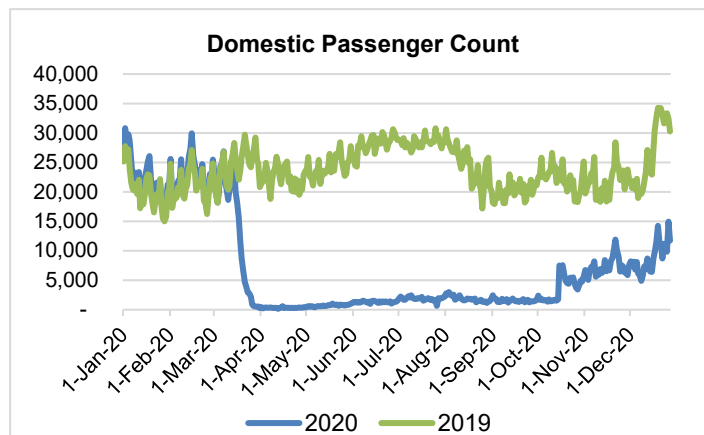
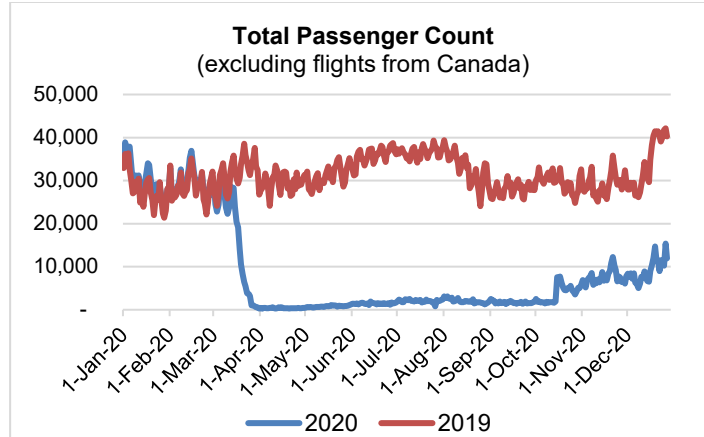
# HTA COVID-19 UPDATE

(Issued: 12/28/20 @ 4:30pm)

Reason for Trip by Arrival Airport - Transpacific Screened Passengers as of 12/27/20	Honolulu (HNL)	Kahului (OGG)	Kona (KOA)	Lihue (LIH)	Grand Total
Airline Crew	486	253	123	3	865
Connecting Flight (Transit)	313	21	3	2	339
Essential Worker	140	27	16	4	187
Honeymoon	9	9	8	0	26
Incentive Trip	2	0	0	0	2
Intended Resident	79	8	12	0	99
Military or Federal Government	227	0	1	0	228
Other	46	11	4	0	61
Other Business	36	23	8	0	67
Pleasure/Vacation	2,683	3,531	1,427	19	7,660
Returning Resident	1,730	204	160	14	2,108
Sports Event	0	2	0	0	2
To Attend School	21	0	0	0	21
To Get Married	2	3	4	0	9
Transit	0	0	0	0	0
Visiting Friends or Relatives	1,092	293	272	1	1,658
<b>Grand Total</b>	<b>6,866</b>	<b>4,385</b>	<b>2,038</b>	<b>43</b>	<b>13,332</b>

**Source:** Safe Travels program developed by the State of Hawaii Office of Enterprise Technology Services

**Note:** The data is preliminary and subject to change



**Daily Passenger Count Table**

12/27/2020	Domestic	International	Total
Oahu	5986	205	6191
Maui	3905		3905
Island of Hawaii	1803		1803
Kauai	36		36
State	11730	205	11935

## Novel Coronavirus in Hawaii

### COVID-19 Positive Cases

*Cumulative totals as of 12:00pm on December 28, 2020*

Total Confirmed Cases	21,028* (46 new)
Hawaii	1,864
Kauai	144
Lanai	106
Maui	906†
Molokai	22
Oahu	17,634
Out of State	352
Pending	0
Required Hospitalization	1446‡
Hawaii Deaths	285
Cases in the past 14 days	1,558**

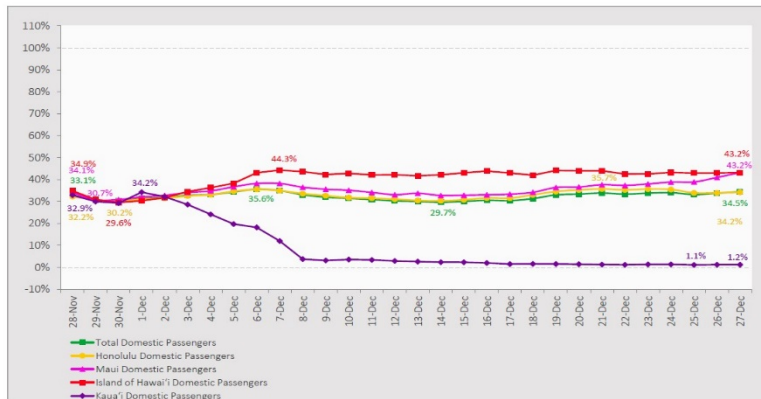
### Footnotes for COVID-19 Cases

\*As a result of updated information, one case on Oahu was removed from the counts.

\*\*Using cases reported in the past 14 days provides a rough approximation of the number of cases currently meeting criteria for isolation. This proxy number for "active cases" resolves classification issues for cases unable to be reached or who are out of jurisdiction, for whom precise release from isolation date may not be possible to determine. It is also not influenced by lags in data entry. (This total does not include Hawaii residents diagnosed outside of Hawaii)

‡Includes Hawaii residents hospitalized out of state.

**7-Day Domestic by Island Moving Average Daily Passenger Volume**  
2020 Volume as Percentage of 2019 Volume  
Through December 27, 2020



Source: HVCB analysis based on data from DBEDT  
Note: Passenger volume figures include both visitors and residents.

**Domestic by Island Month-to-Date and Year-to-Date Daily Passenger Volume**  
2020 Volume versus 2019 Volume  
Through December 27, 2020

December 2020 (Month-to-Date through December 27)

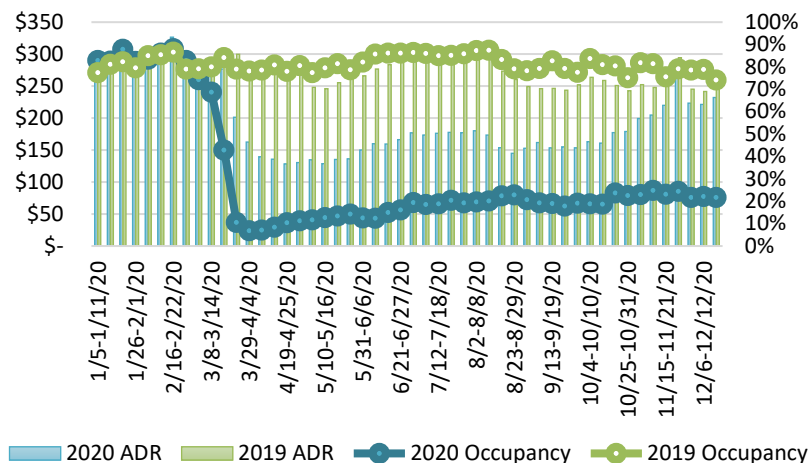
	2020	2019	Volume Change	Percent Change
Honolulu	128,010	370,803	-242,793	-65.5%
Maui County	73,052	185,206	-112,154	-60.6%
Island of Hawai'i	35,162	77,388	-42,226	-54.6%
Kaua'i	2,204	62,865	-60,661	-96.5%
<b>Total</b>	<b>238,428</b>	<b>696,262</b>	<b>-457,834</b>	<b>-65.8%</b>

2020 (Year-to-Date through December 27)

	2020	2019	Volume Change	Percent Change
Honolulu	1,484,728	4,583,167	-3,098,439	-67.6%
Maui County	606,812	2,230,807	-1,623,995	-72.8%
Island of Hawai'i	299,412	967,707	-668,295	-69.1%
Kaua'i	184,486	762,720	-578,234	-75.8%
<b>Total</b>	<b>2,575,438</b>	<b>8,544,401</b>	<b>-5,968,964</b>	<b>-69.9%</b>

Source: HVCB analysis based on data from DBEDT  
Note: Passenger volume figures include both visitors and residents. Total includes other international passengers. 2020 includes one additional day due to Leap Year (February 29th, 2020).

**State of Hawai'i Hotel Performance by Week - 2020 vs 2019**



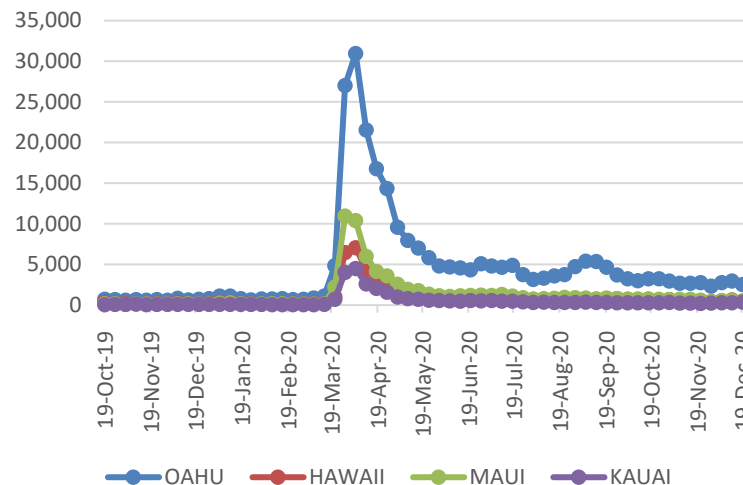
Source: STR, Inc. © Copyright 2020 Hawai'i Tourism Authority

**Hawaii Hotel Performance Info:**

For the week of December 13 – December 19, 2020

	Occupancy	ADR	RevPAR
<b>State of Hawaii</b>	21.6%	\$232.23	\$50.25
<b>Oahu</b>	21.6%	\$163.16	\$35.28
<b>Maui County</b>	23.6%	\$366.29	\$86.57
<b>Kauai County</b>	11.1%	\$155.76	\$17.26
<b>Island of Hawaii</b>	24.4%	\$261.62	\$63.95

**2020 Initial Weekly Unemployment Claims by Island**



**Weekly Unemployment Initial Claims: December 19, 2020**

<b>State of Hawaii</b>	4,015
<b>C&amp;C of Oahu</b>	2,526
<b>Hawaii County</b>	477
<b>Maui County</b>	491
<b>Kauai County</b>	359
<b>Agent</b> (filed in Hawaii against another state)	162

**News Highlights**

December 28, 2020

**Honolulu Star Advertiser:** [Hawaii Tourism Authority will spend another \\$250K on troubled Center for Hawaiian Music and Dance](#)

**Hawaii News Now:** [Hawaii reports 95 new COVID-19 cases; no new fatalities](#)

**Hawaii News Now:** [Despite CDC advisory against travel, Hawaii sees Christmas bump in trans-Pacific visitors](#)

**KHON2:** [New super-contagious COVID-19 variant could be spread to Hawaii](#)

**KITV4:** [Kauai County awaits response from governor on resort bubble proposal nearly a week after it was submitted](#)

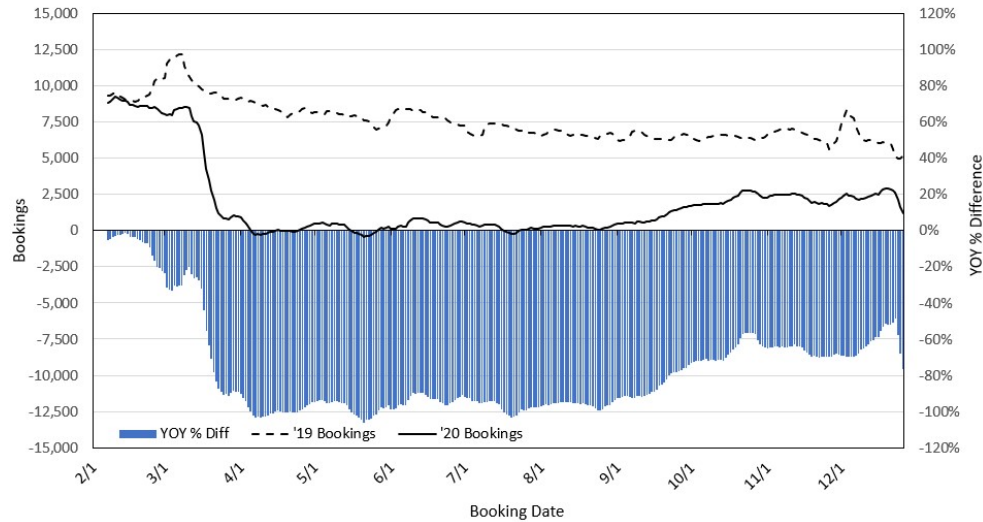
**The Garden Times:** [Last free COVID-19 testing pau](#)

**CNBC:** [Hawaiian Airlines announces three new routes: CEO](#)

**Travel Weekly:** [Sunday was no day of rest at U.S. airports](#)

**Forbes:** [Hawaii Begins Public Debate Over Whether To Allow Vaccinated Travelers To Skip Quarantine](#)

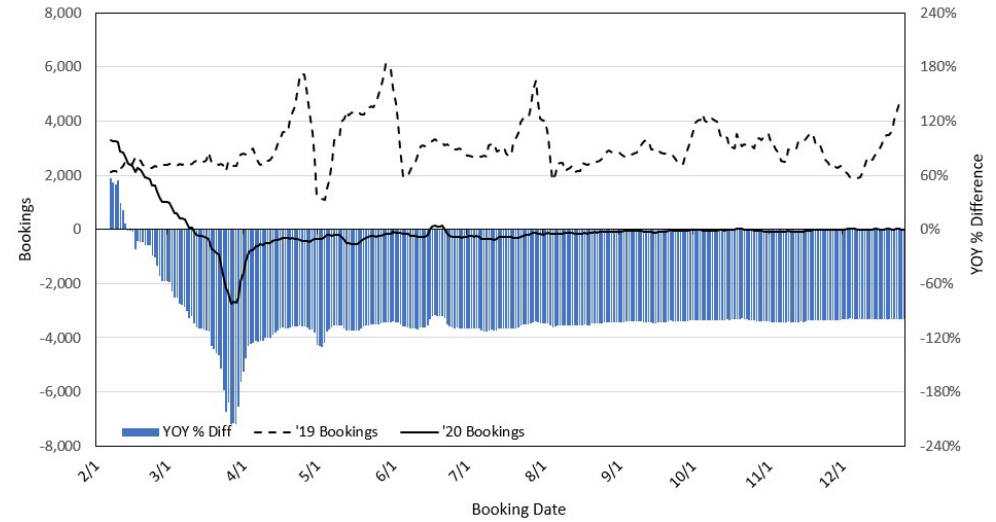
### Travel Agency Bookings to Hawaii for Future Arrivals\* Based on a 7-day Moving Average, 2020 vs 2019 U.S.



\*Future Arrivals refers to all arrivals that are 'future' relative to the referenced booking date.  
Source: Global Agency Pro

Update: Dec 26, 2020

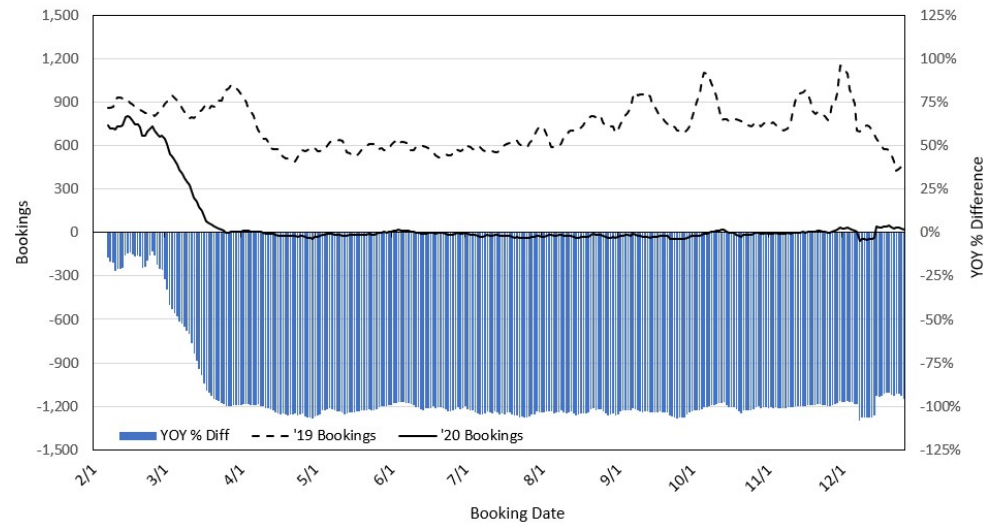
### Travel Agency Bookings to Hawaii for Future Arrivals\* Based on a 7-day Moving Average, 2020 vs 2019 Japan



\*Future Arrivals refers to all arrivals that are 'future' relative to the referenced booking date.  
Source: Global Agency Pro

Update: Dec 26, 2020

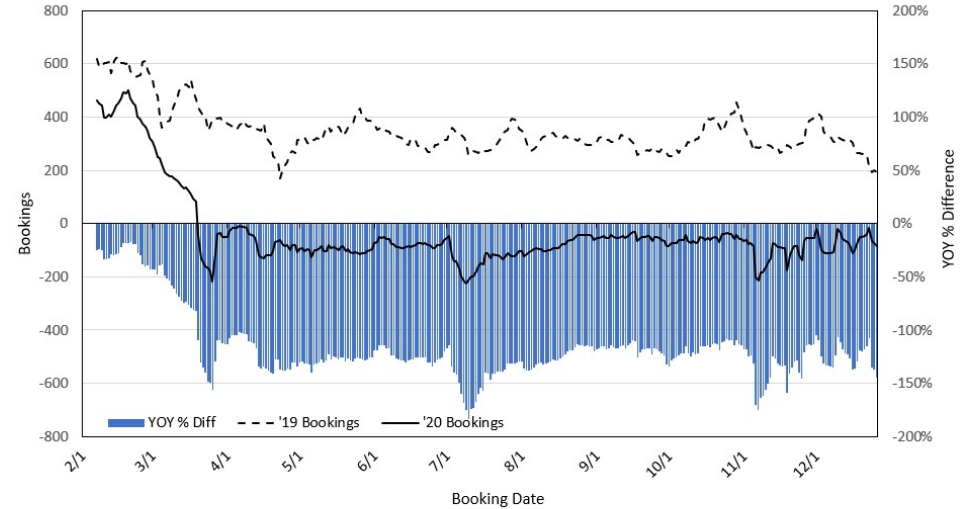
### Travel Agency Bookings to Hawaii for Future Arrivals\* Based on a 7-day Moving Average, 2020 vs 2019 Canada



\*Future Arrivals refers to all arrivals that are 'future' relative to the referenced booking date.  
Source: Global Agency Pro

Update: Dec 26, 2020

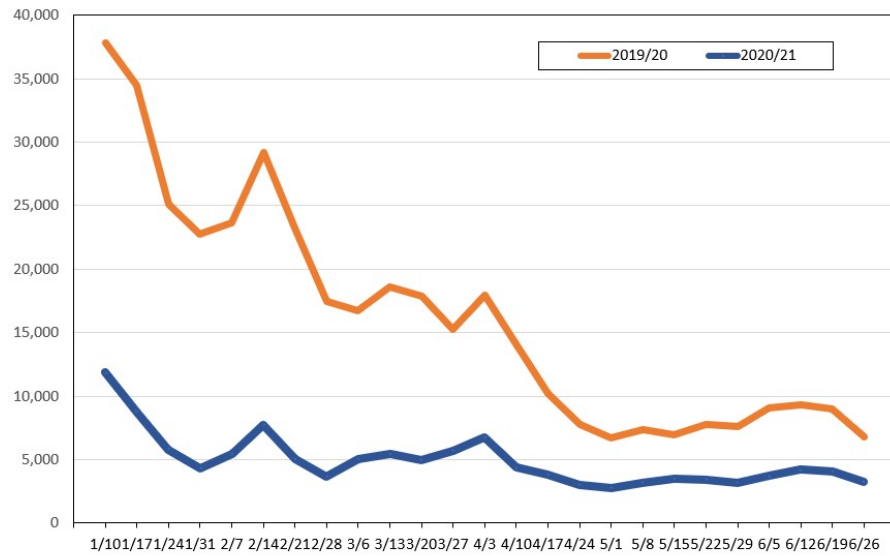
### Travel Agency Bookings to Hawaii for Future Arrivals\* Based on a 7-day Moving Average, 2020 vs 2019 Australia



\*Future Arrivals refers to all arrivals that are 'future' relative to the referenced booking date.  
Source: Global Agency Pro

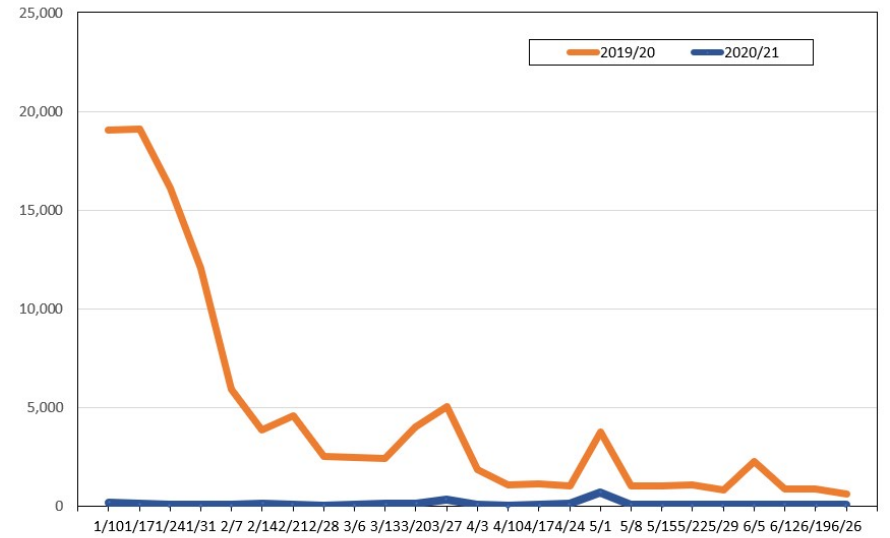
Update: Dec 26, 2020

**Travel Agency Weekly Bookings for Future Travel to Hawai'i as of December 26, 2020**  
U.S.



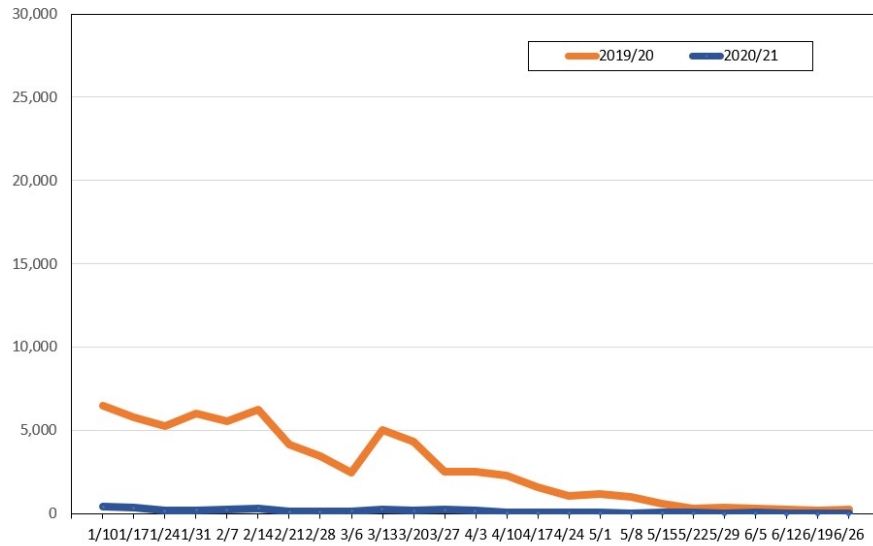
Source: Global Agency Pro, as of December 26, 2020

**Travel Agency Weekly Bookings for Future Travel to Hawai'i as of December 26, 2020**  
Japan



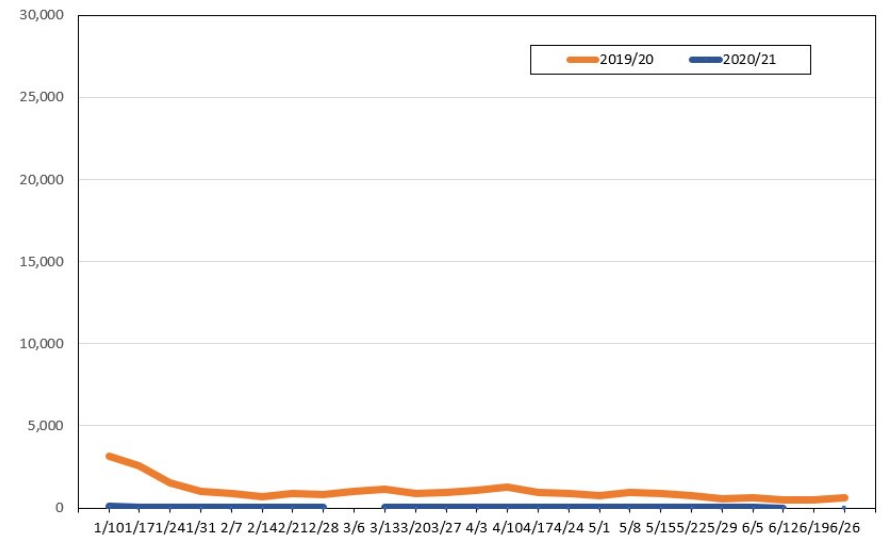
Source: Global Agency Pro, as of December 26, 2020

**Travel Agency Weekly Bookings for Future Travel to Hawai'i as of December 26, 2020**  
Canada



Source: Global Agency Pro, as of December 26, 2020

**Travel Agency Weekly Bookings for Future Travel to Hawai'i as of December 26, 2020**  
Australia



Source: Global Agency Pro, as of December 26, 2020