

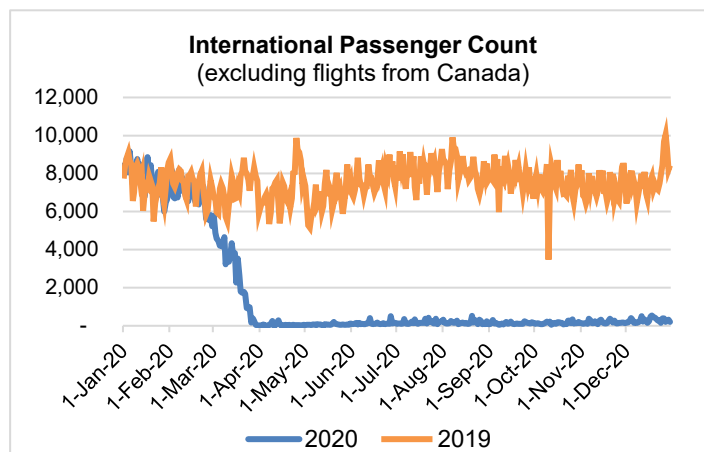
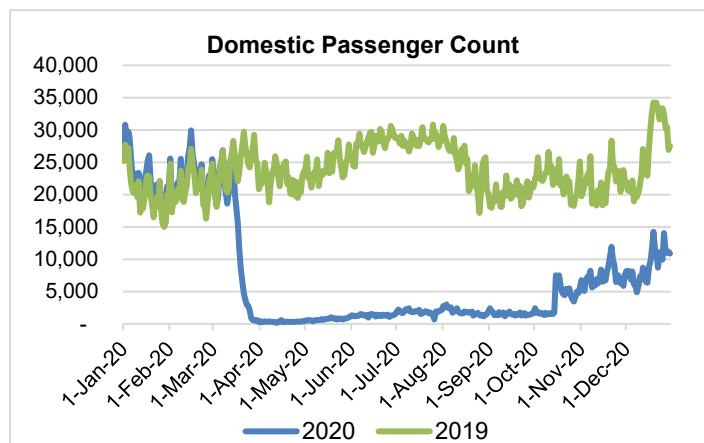
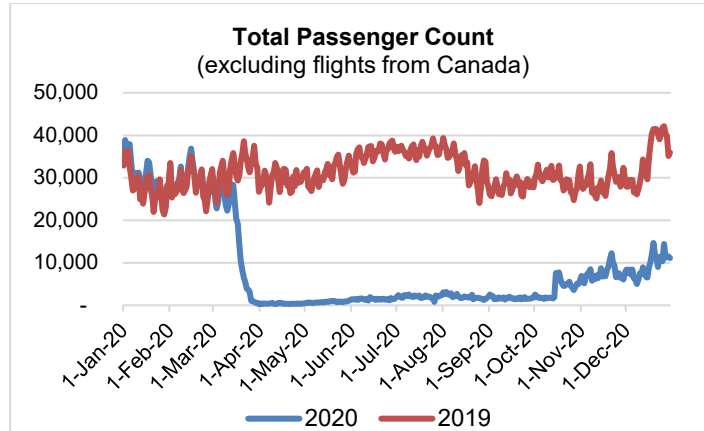
HTA COVID-19 UPDATE

(Issued: 12/31/20 @ 2:30pm)

Reason for Trip by Arrival Airport - Transpacific Screened Passengers as of 12/30/20	Honolulu (HNL)	Kahului (OGG)	Kona (KOA)	Lihue (LIH)	Grand Total
Airline Crew	518	229	111	8	866
Connecting Flight (Transit)	265	11	1	1	278
Corporate Meeting	3	0	0	0	3
Essential Worker	89	20	10	1	120
Honeymoon	14	2	6	0	22
Intended Resident	149	30	21	3	203
Military or Federal Government	108	0	0	1	109
Other	69	24	12	0	105
Other Business	40	23	24	0	87
Pleasure/Vacation	2,777	2,338	953	23	6,091
Returning Resident	2,051	272	249	39	2,611
Sports Event	0	13	0	0	13
To Attend School	41	4	6	0	51
To Get Married	12	2	1	0	15
Transit	3	0	0	0	3
Visiting Friends or Relatives	1,338	348	231	7	1,924
Grand Total	7,477	3,316	1,625	83	12,501

Source: Safe Travels program developed by the State of Hawaii Office of Enterprise Technology Services

Note: The data is preliminary and subject to change



Daily Passenger Count Table

12/30/2020	Domestic	International	Total
Oahu	6451	205	6656
Maui	2922		2922
Island of Hawaii	1437		1437
Kauai	80		80
State	10890	205	11095

Novel Coronavirus in Hawaii

COVID-19 Positive Cases

Cumulative totals as of 12:00pm on December 31, 2020

Total Confirmed Cases	21,397* (188 new)
Hawaii	1,887
Kauai	145
Lanai	106
Maui	958†
Molokai	22
Oahu	17,908
Out of State	371
Pending	0
Required Hospitalization	1462‡
Hawaii Deaths	288
Cases in the past 14 days	1,619**

Footnotes for COVID-19 Cases

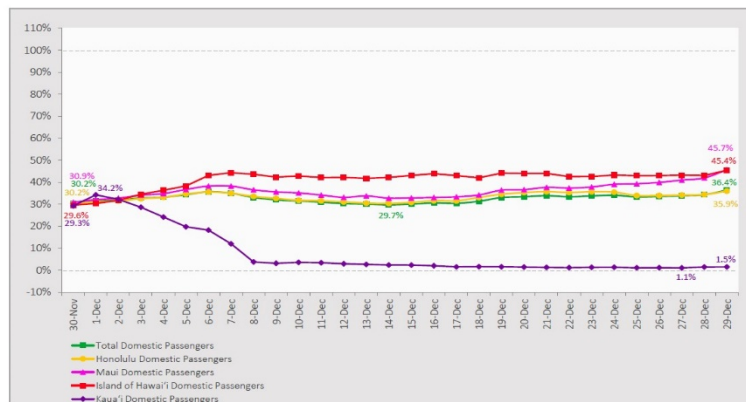
*As a result of updated information, one case on Maui was recategorized to out-of-state.

**Using cases reported in the past 14 days provides a rough approximation of the number of cases currently meeting criteria for isolation. This proxy number for "active cases" resolves classification issues for cases unable to be reached or who are out of jurisdiction, for whom precise release from isolation date may not be possible to determine. It is also not influenced by lags in data entry. (This total does not include Hawaii residents diagnosed outside of Hawaii)

‡Includes Hawaii residents hospitalized out of state.

7-Day Domestic by Island Moving Average Daily Passenger Volume

2020 Volume as Percentage of 2019 Volume
Through December 29, 2020



Source: HVCB analysis based on data from DBEDT
Note: Passenger volume figures include both visitors and residents.

Domestic by Island Month-to-Date and Year-to-Date Daily Passenger Volume

2020 Volume versus 2019 Volume
Through December 29, 2020

December 2020 (Month-to-Date through December 29)

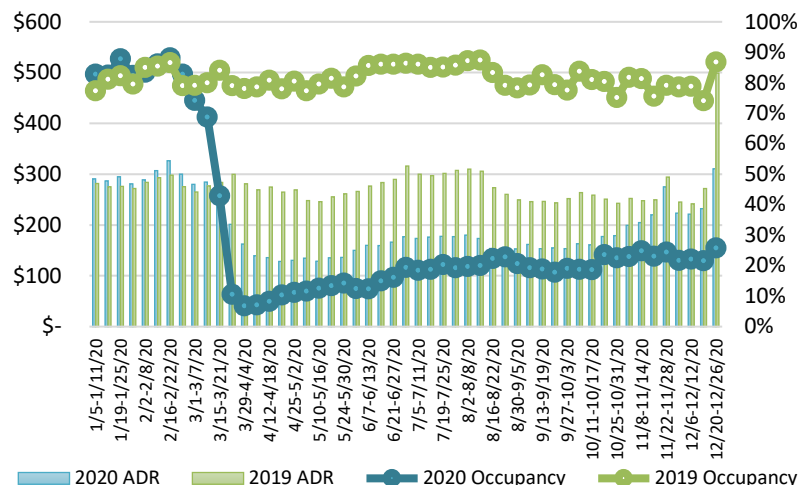
	2020	2019	Volume Change	Percent Change
Honolulu	140,202	403,696	-263,494	-65.3%
Maui County	78,039	200,922	-122,883	-61.2%
Island of Hawai'i	38,311	85,519	-47,208	-55.2%
Kaua'i	2,312	68,834	-66,522	-96.6%
Total	258,864	758,971	-500,107	-65.9%

2020 (Year-to-Date through December 29)

	2020	2019	Volume Change	Percent Change
Honolulu	1,496,920	4,616,060	-3,119,140	-67.6%
Maui County	611,799	2,246,523	-1,634,724	-72.8%
Island of Hawai'i	302,561	975,838	-673,277	-69.0%
Kaua'i	184,594	768,689	-584,095	-76.0%
Total	2,595,874	8,607,110	-6,011,237	-69.8%

Source: HVCB analysis based on data from DBEDT
Note: Passenger volume figures include both visitors and residents. Total includes other international passengers. 2020 includes one additional day due to Leap Year (February 29th, 2020).

State of Hawai'i Hotel Performance by Week - 2020 vs 2019



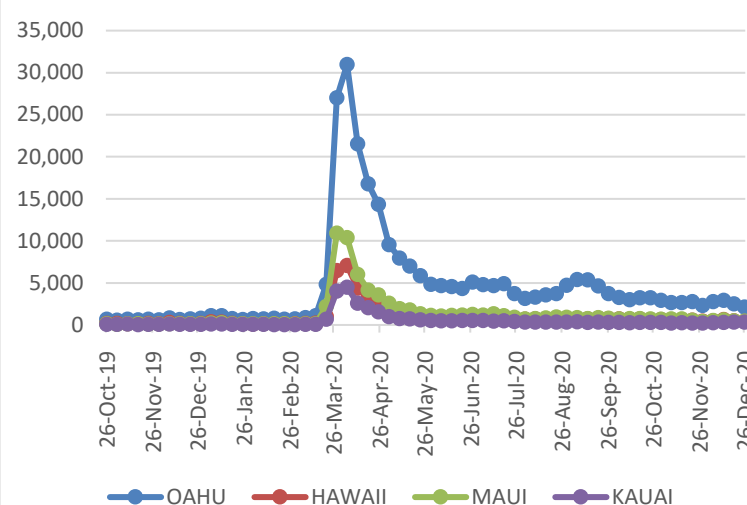
Source: STR, Inc. © Copyright 2020 Hawai'i Tourism Authority

Hawaii Hotel Performance Info:

For the week of December 20 – December 26, 2020

	Occupancy	ADR	RevPAR
State of Hawaii	25.8%	\$ 310.61	\$ 80.05
Oahu	25.3%	\$ 189.64	\$ 47.88
Maui County	27.1%	\$ 539.33	\$ 146.26
Kauai County	13.0%	\$ 164.92	\$ 21.49
Island of Hawaii	33.4%	\$ 373.75	\$ 124.74

2020 Initial Weekly Unemployment Claims by Island



Weekly Unemployment Initial Claims: December 26, 2020

State of Hawaii	3,472
C&C of Oahu	2,147
Hawaii County	418
Maui County	468
Kauai County	346
Agent (filed in Hawaii against another state)	93

News Highlights

December 31, 2020

Hawaii News Now: [New Year's revelries muted by coronavirus as curtain draws on 2020](#)

Hawaii News Now: [Some Hawaii hotel officials expect tourism to recover slowly](#)

Hawaii News Now: [In a year marked by tragedy, Hawaii remembers those we've lost to COVID-19](#)

Hawaii News Now: [GOP-led Senate rejects vote on Trump's push for \\$2K checks](#)

KITV: [If you want to travel next year, you may need a vaccine passport](#)

KITV: [If Covid-19 vaccination picks up, US could return to normal life by early fall 2021, Fauci says](#)

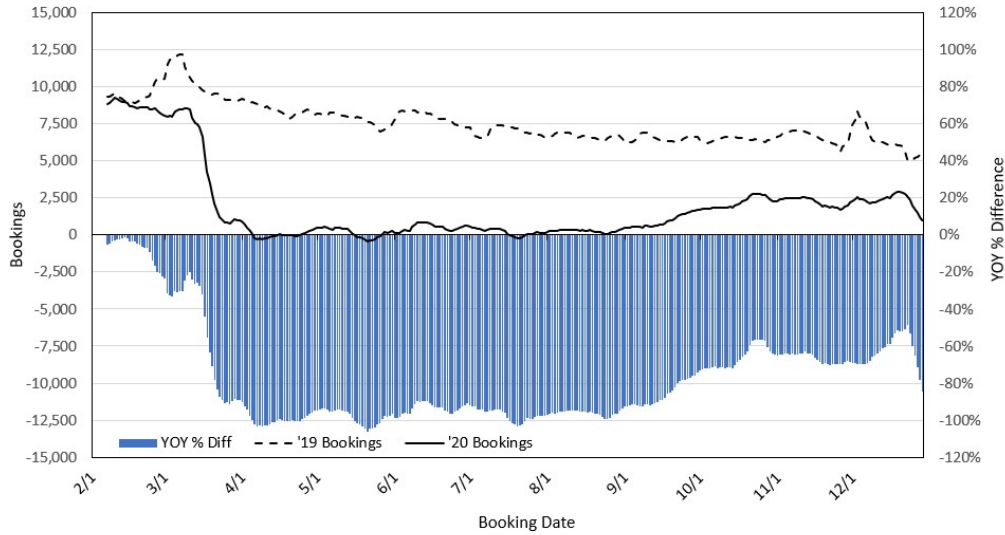
KITV: [Hawaii's virus notification app set to launch statewide](#)

KITV: [The number of residents leaving Hawai'i continued to decline in 2020](#)

KHON: [Some changes to local New Year's traditions amid COVID-19](#)

KHON: [Approximately 20,000 COVID-19 vaccines administered in Hawaii](#)

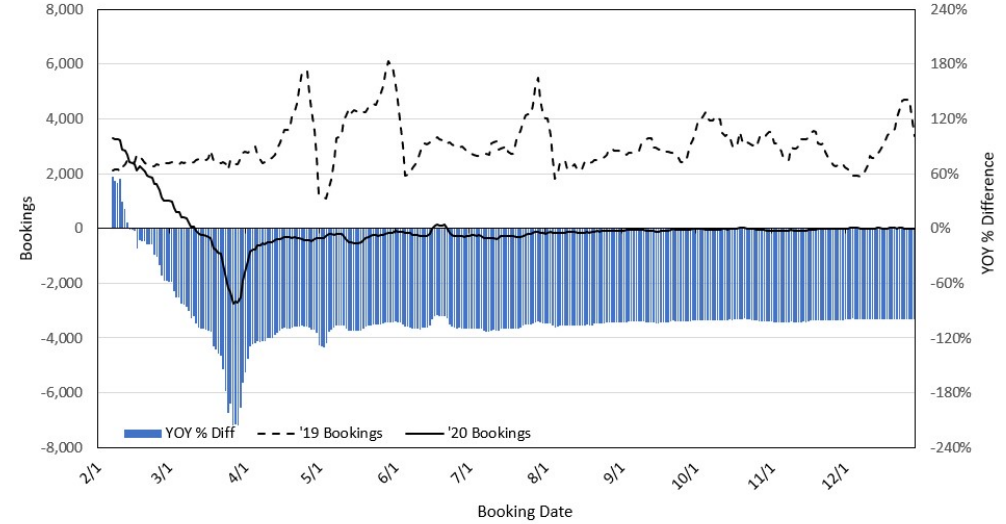
Travel Agency Bookings to Hawaii for Future Arrivals* Based on a 7-day Moving Average, 2020 vs 2019 U.S.



*Future Arrivals refers to all arrivals that are 'future' relative to the referenced booking date.
Source: Global Agency Pro

Update: Dec 29, 2020

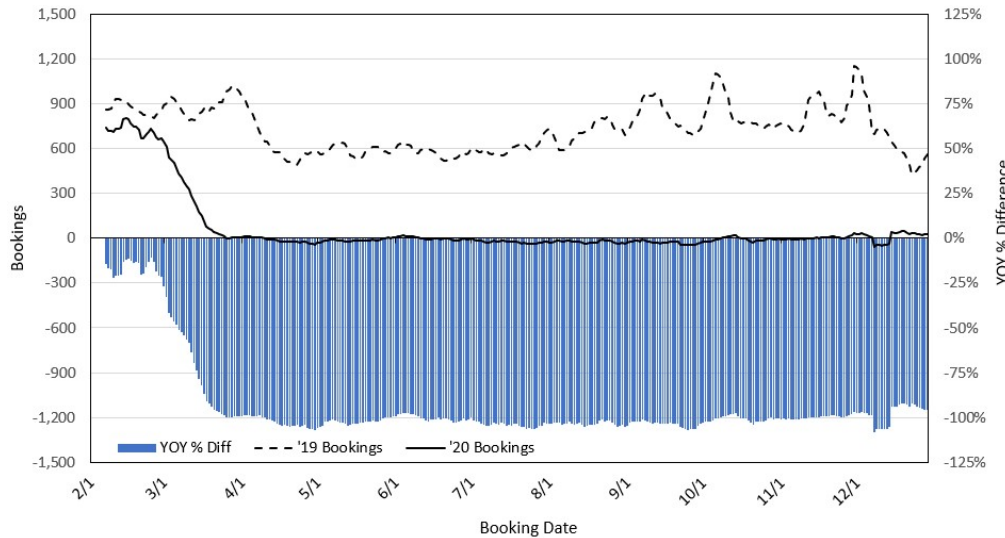
Travel Agency Bookings to Hawaii for Future Arrivals* Based on a 7-day Moving Average, 2020 vs 2019 Japan



*Future Arrivals refers to all arrivals that are 'future' relative to the referenced booking date.
Source: Global Agency Pro

Update: Dec 29, 2020

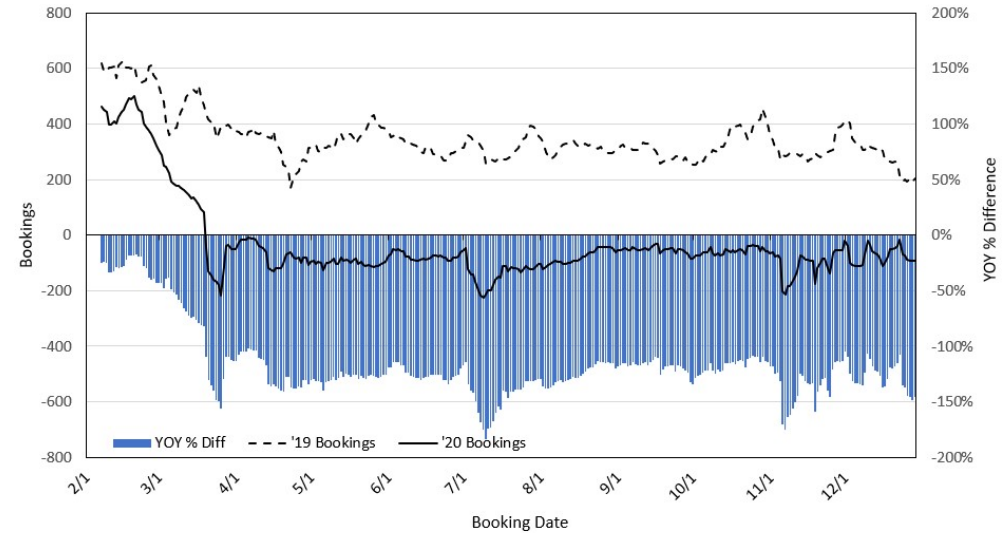
Travel Agency Bookings to Hawaii for Future Arrivals* Based on a 7-day Moving Average, 2020 vs 2019 Canada



*Future Arrivals refers to all arrivals that are 'future' relative to the referenced booking date.
Source: Global Agency Pro

Update: Dec 29, 2020

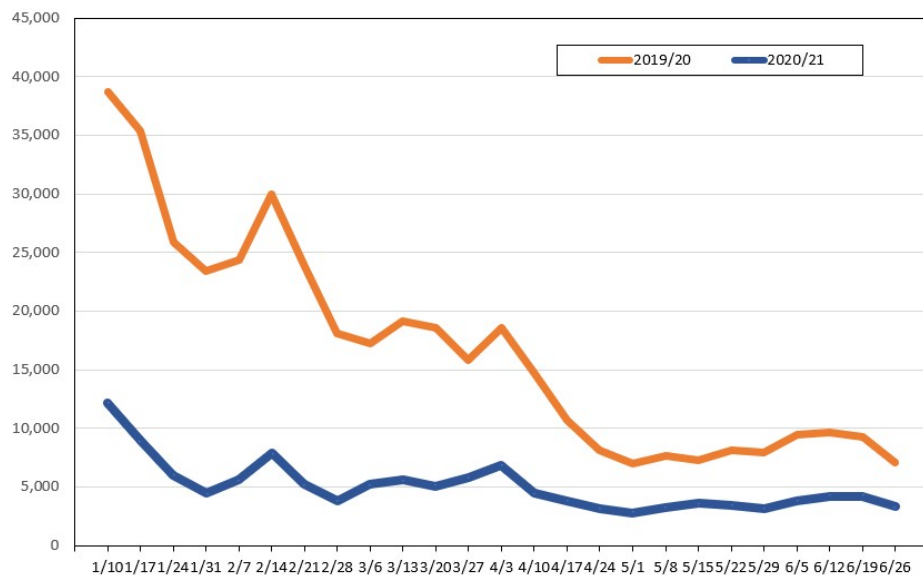
Travel Agency Bookings to Hawaii for Future Arrivals* Based on a 7-day Moving Average, 2020 vs 2019 Australia



*Future Arrivals refers to all arrivals that are 'future' relative to the referenced booking date.
Source: Global Agency Pro

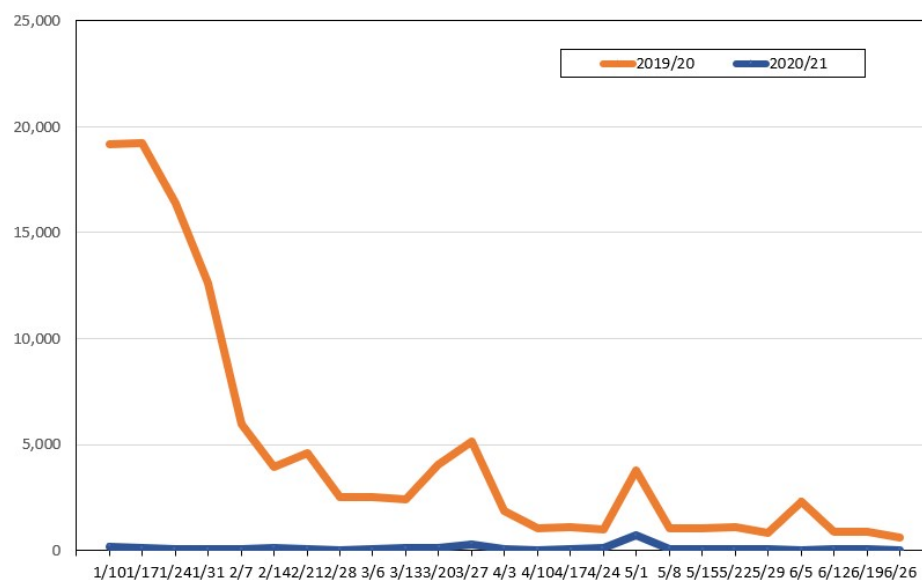
Update: Dec 29, 2020

Travel Agency Weekly Bookings for Future Travel to Hawai'i as of December 29, 2020
U.S.



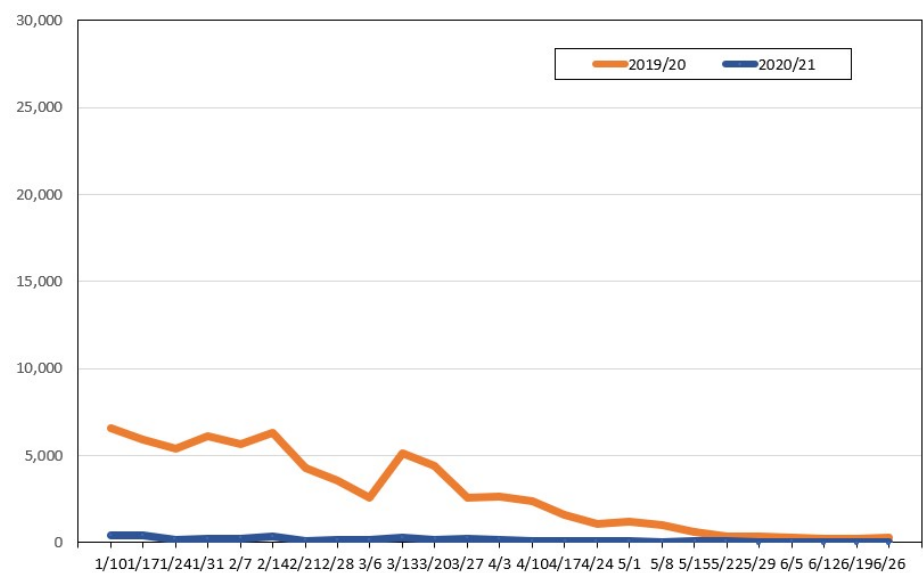
Source: Global Agency Pro, as of December 29, 2020

Travel Agency Weekly Bookings for Future Travel to Hawai'i as of December 29, 2020
Japan



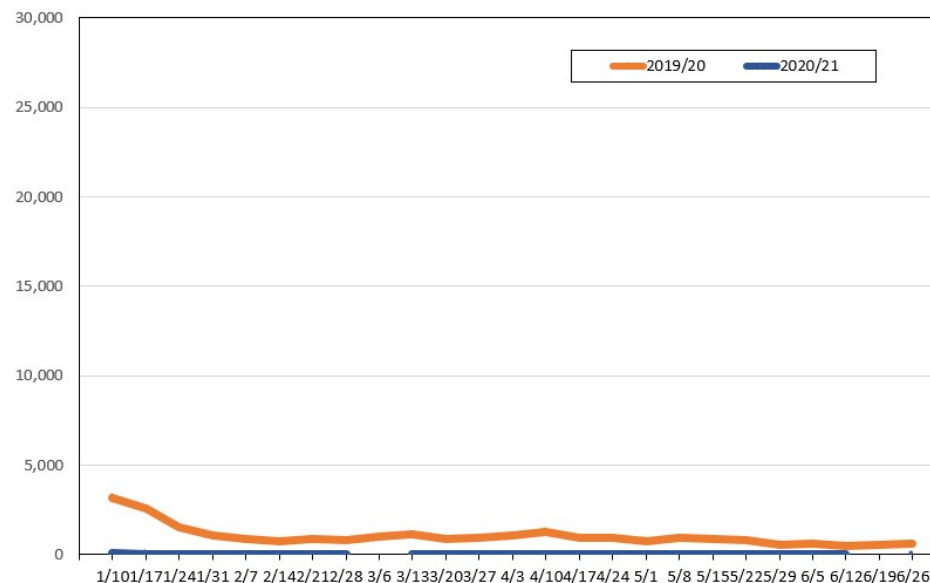
Source: Global Agency Pro, as of December 29, 2020

Travel Agency Weekly Bookings for Future Travel to Hawai'i as of December 29, 2020
Canada



Source: Global Agency Pro, as of December 29, 2020

Travel Agency Weekly Bookings for Future Travel to Hawai'i as of December 29, 2020
Australia



Source: Global Agency Pro, as of December 29, 2020