

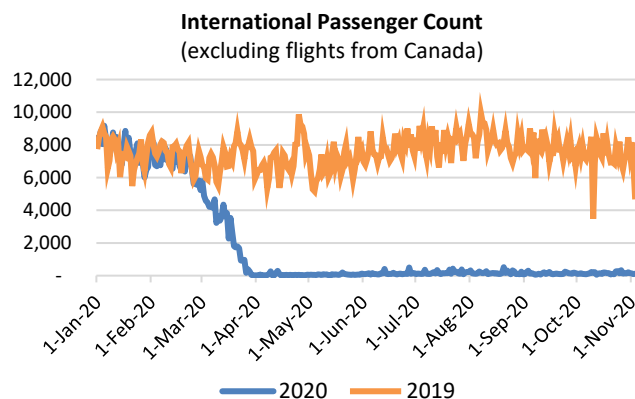
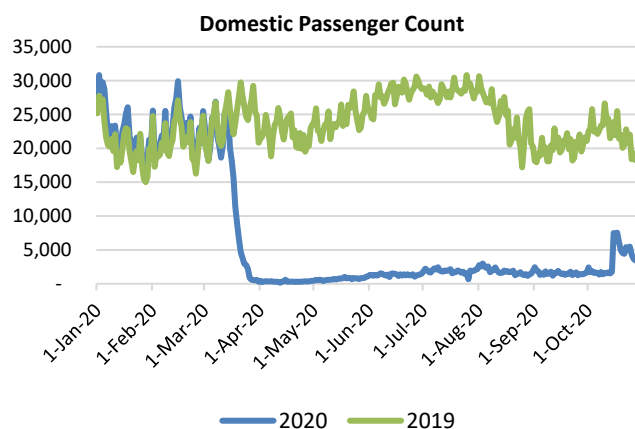
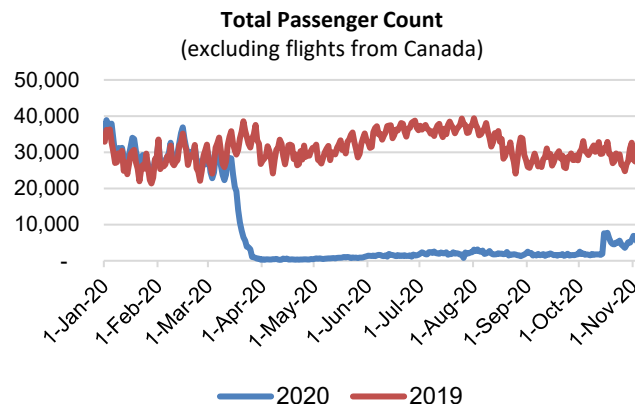
HTA COVID-19 UPDATE

(Issued: 11/4/20 @ 4:30pm)

Reason for Trip by Arrival Airport - Transpacific Screened Passengers as of 11/03/20	Honolulu (HNL)	Kahului (OGG)	Kona (KOA)	Lihue (LIH)	Grand Total
Airline Crew	318	70	40	38	466
Corporate Meeting	2	4	0	0	6
Essential Worker	78	22	18	9	127
Honeymoon	3	3	2	4	12
Incentive Trip	2	0	0	1	3
Intended Resident	134	39	29	7	209
Military or Federal Government	153	1	2	0	156
Other	37	15	9	10	71
Other Business	120	52	31	24	227
Pleasure/Vacation	933	777	249	351	2,310
Returning Resident	732	194	113	68	1,107
Sports Event	1	0	0	0	1
To Attend School	7	1	0	0	8
To Get Married	6	2	0	1	9
Transit	202	0	1	0	203
Visiting Friends or Relatives	561	187	114	64	926
Grand Total	3,289	1,367	608	577	5,841

Source: Safe Travels program developed by the State of Hawaii Office of Enterprise Technology Services
Note: The data is preliminary and subject to change

Market Impact Update: <https://www.dropbox.com/11/04/20 HTA COVID19 Update>



Daily Passenger Count Table

11/03/2020	Domestic	International	Total
Oahu	2942	114	3056
Maui	1232		1232
Island of Hawaii	539		539
Kauai	512		512
State	5225	114	5339

Novel Coronavirus in Hawaii

COVID-19 Positive Cases

Cumulative totals as of 3:00pm on November 4, 2020

Total Confirmed Cases	15,473* (156 new)
Hawaii	1,332
Kauai	67
Lanai	104
Maui	414†
Molokai	17
Oahu	13,445
Out of State	94
Pending	0
Required Hospitalization	1125‡
Hawaii Deaths	219**
Released from Isolation	11,958

Footnotes for COVID-19 Cases

*As a result of updated information, one case on Oahu was removed from the counts.

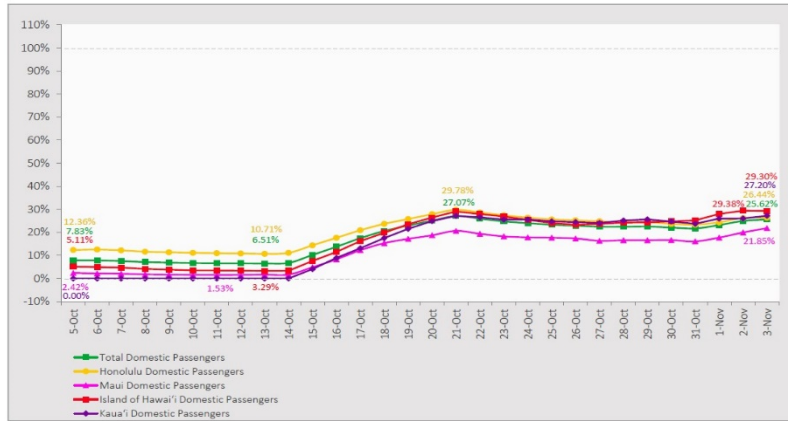
†One case is a Lanai resident whose exposure is on Maui Island and who will be remaining on Maui Island for the interim.

‡Includes Hawaii residents hospitalized out of state.

§Includes cases that meet isolation release criteria (Isolation should be maintained until at least 24 hours after resolution of fever and myalgia without the use of antipyretics OR at least 10 days have passed since symptom onset, whichever is longer). (The cases that have died and one case that has left the jurisdiction have been removed from these counts). Positive cases include confirmed cases, and Hawaii residents and non-residents; data are preliminary and subject to change. Note that CDC provides case counts according to states of residence.

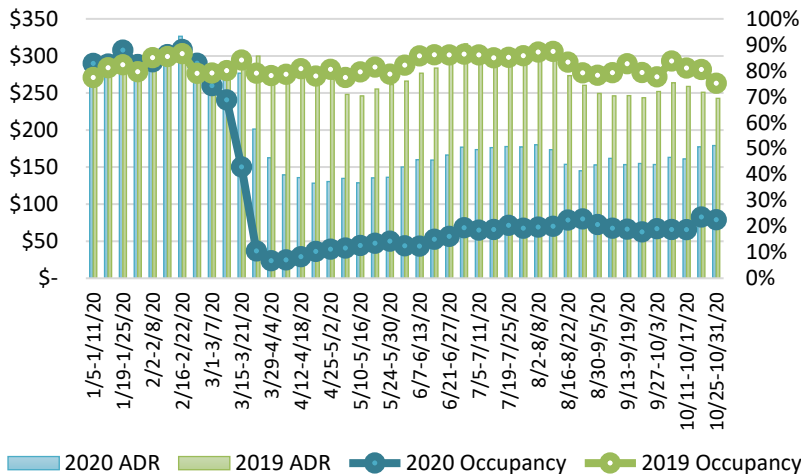
7-Day Domestic by Island Moving Average Daily Passenger Volume

2020 Volume as Percentage of 2019 Volume
Through November 3, 2020



Source: HVCB analysis based on data from DBEDT
Note: Passenger volume figures include both visitors and residents.

State of Hawai'i Hotel Performance by Week - 2020 vs 2019



Source: STR, Inc. © Copyright 2020 Hawai'i Tourism Authority

Hawaii Hotel Performance Info:

For the week of October 25 – October 31, 2020

	Occupancy	ADR	RevPAR
State of Hawaii	22.5%	\$ 179.09	\$ 40.32
Oahu	23.8%	\$ 162.16	\$ 38.64
Maui County	18.5%	\$ 237.87	\$ 44.07
Kauai County	23.6%	\$ 197.86	\$ 46.66
Island of Hawaii	24.2%	\$ 142.75	\$ 34.49

Domestic by Island Month-to-Date and Year-to-Date Daily Passenger Volume

2020 Volume versus 2019 Volume
Through November 3, 2020

November 2020 (Month-to-Date through November 3)

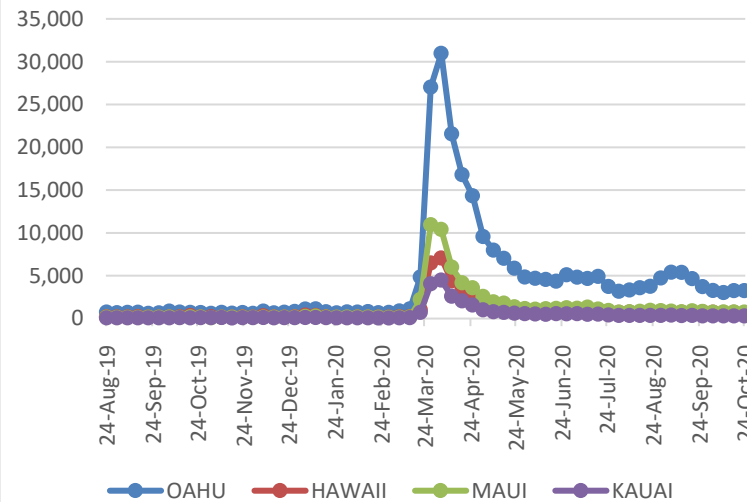
	2020	2019	Volume Change	Percent Change
Honolulu	10,828	37,031	-26,203	-70.8%
Maui County	4,097	17,156	-13,059	-76.1%
Island of Hawai'i	1,913	6,431	-4,518	-70.3%
Kauai	1,764	6,837	-5,073	-74.2%
Total	18,602	67,455	-48,853	-72.4%

2020 (Year-to-Date through November 3)

	2020	2019	Volume Change	Percent Change
Honolulu	1,238,220	3,854,324	-2,616,104	-67.9%
Maui County	477,069	1,875,718	-1,398,649	-74.6%
Island of Hawai'i	240,390	821,708	-581,318	-70.7%
Kauai	160,465	640,622	-480,157	-75.0%
Total	2,116,144	7,192,372	-5,076,229	-70.6%

Source: HVCB analysis based on data from DBEDT
Note: Passenger volume figures include both visitors and residents. Total includes other international passengers. 2020 includes one additional day due to Leap Year (February 29th, 2020).

2020 Initial Weekly Unemployment Claims by Island



Weekly Unemployment Initial Claims: October 24, 2020

State of Hawaii	4,933
C&C of Oahu	3,241
Hawaii County	571
Maui County	730
Kauai County	288
Agent (filed in Hawaii against another state)	103

News Highlights

November 4, 2020

Hawaii News Now: [DOH whistleblower who exposed contact tracing problems returns to work](#)

The Maui News: [Free COVID-19 testing in Molokai](#)

Hawaii Tribune-Herald: [Ige: New law needed for mask enforcement](#)

West Hawaii Today: [Hawaii Island COVID-19 case count reaches 1,011](#)

The Garden Island: [Few positive tests in post-travel program](#)

Hawaii Public Radio: [The Latest: No Deaths, 89 New Cases; State Seeks More Pre-Travel Testing Partners](#)

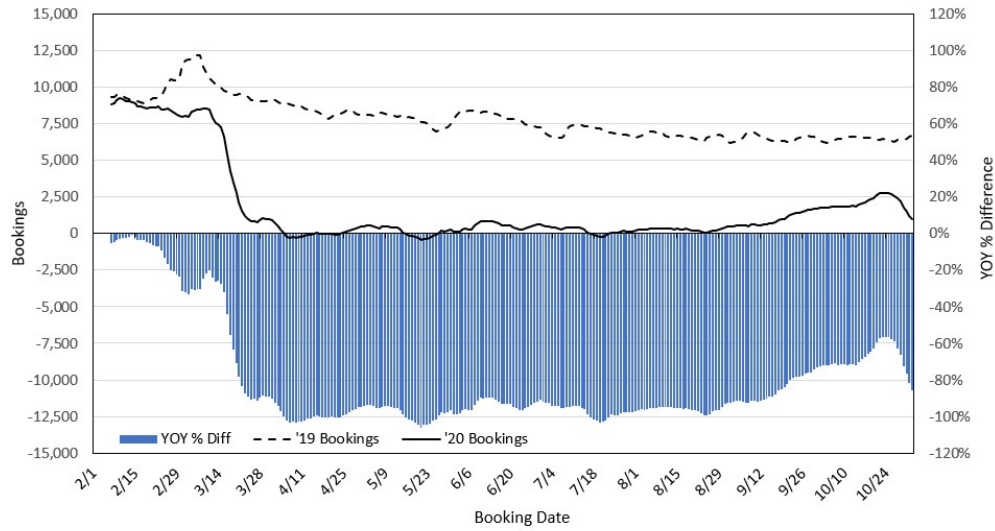
The Press Democrat: [Is Hawaii ready for visitors? Scenes from Oahu](#)

Travel Pulse: [Southwest Airlines Marks Inaugural San Diego-Honolulu Flight](#)

The Chicago Tribune: [Holiday travel and safety: 5 things we know](#)

The Wall Street Journal: [Travelers Seeking Lockdown-Free Vacations Head to the Beach](#)

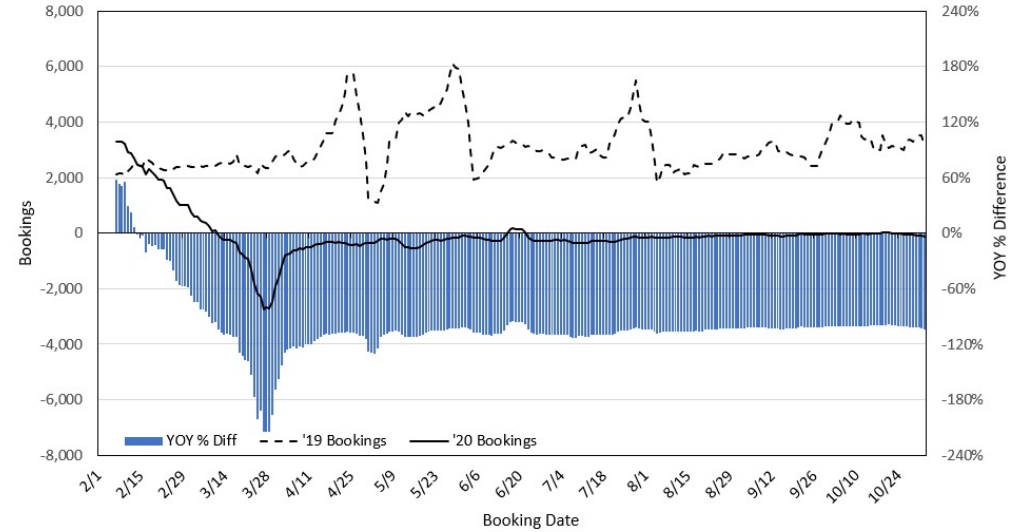
Travel Agency Bookings to Hawaii for Future Arrivals* Based on a 7-day Moving Average, 2020 vs 2019 U.S.



*Future Arrivals refers to all arrivals that are 'future' relative to the referenced booking date.
Source: Global Agency Pro

Update: Nov 2, 2020

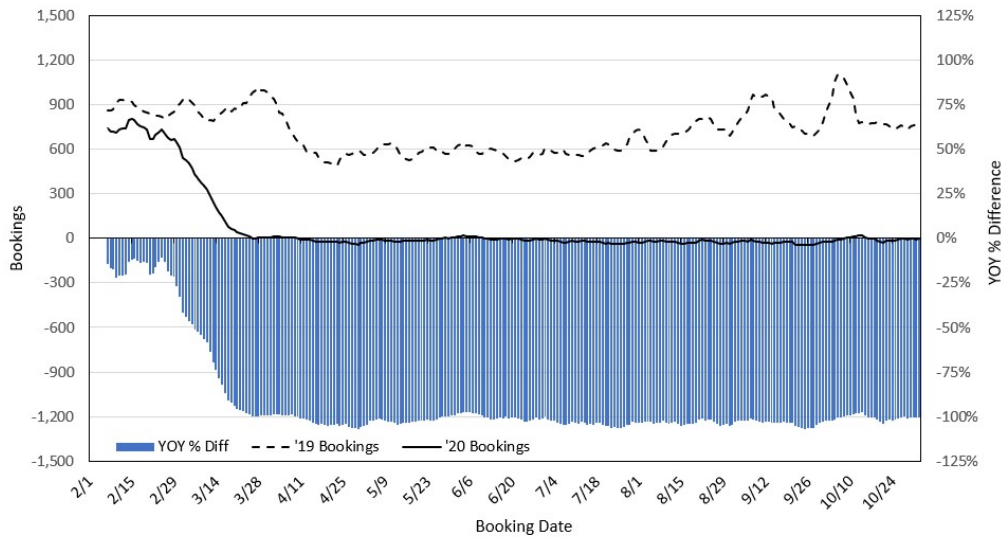
Travel Agency Bookings to Hawaii for Future Arrivals* Based on a 7-day Moving Average, 2020 vs 2019 Japan



*Future Arrivals refers to all arrivals that are 'future' relative to the referenced booking date.
Source: Global Agency Pro

Update: Nov 2, 2020

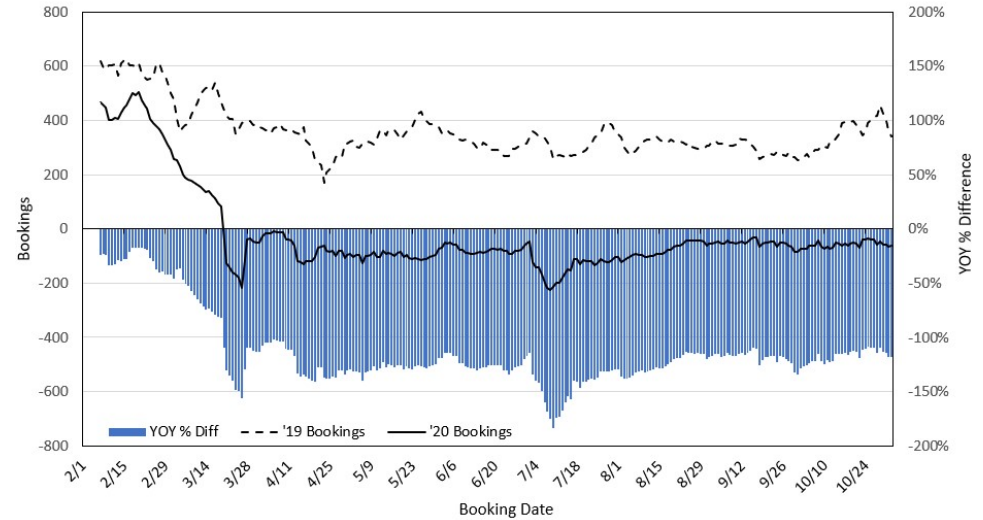
Travel Agency Bookings to Hawaii for Future Arrivals* Based on a 7-day Moving Average, 2020 vs 2019 Canada



*Future Arrivals refers to all arrivals that are 'future' relative to the referenced booking date.
Source: Global Agency Pro

Update: Nov 2, 2020

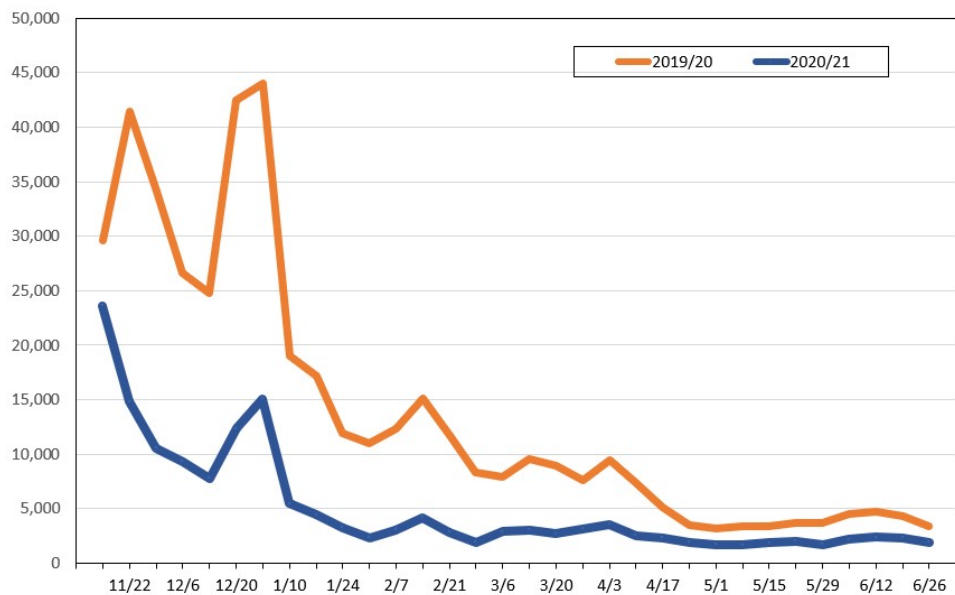
Travel Agency Bookings to Hawaii for Future Arrivals* Based on a 7-day Moving Average, 2020 vs 2019 Australia



*Future Arrivals refers to all arrivals that are 'future' relative to the referenced booking date.
Source: Global Agency Pro

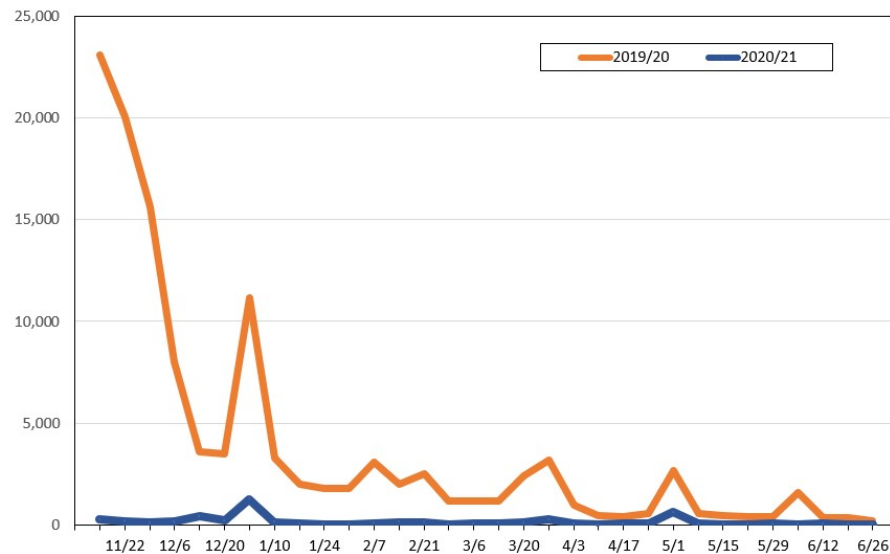
Update: Nov 2, 2020

Travel Agency Weekly Bookings for Future Travel to Hawai'i as of November 2, 2020
U.S.



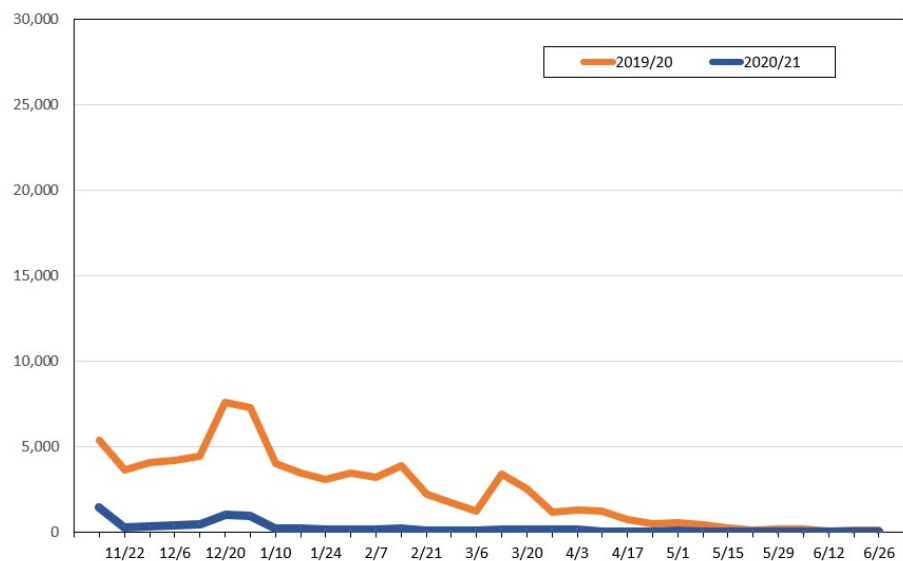
Source: Global Agency Pro, as of November 2, 2020

Travel Agency Weekly Bookings for Future Travel to Hawai'i as of November 2, 2020
Japan



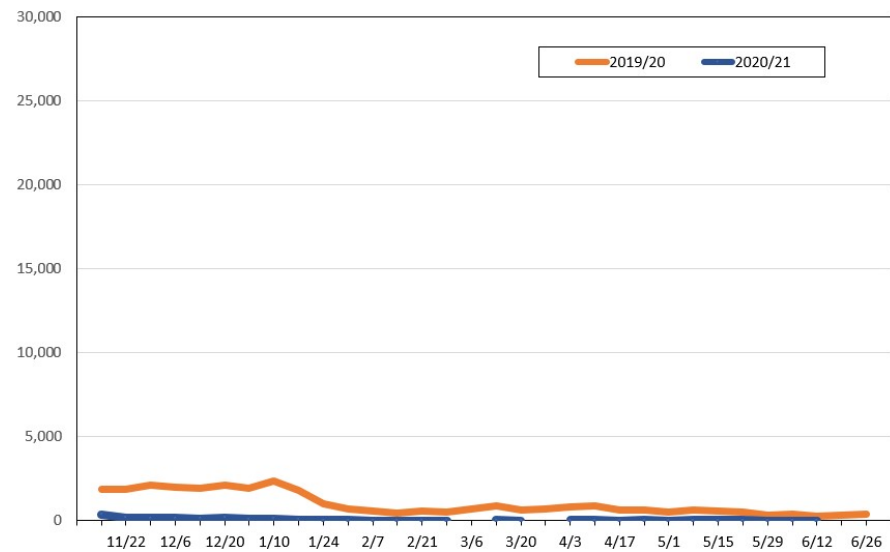
Source: Global Agency Pro, as of November 2, 2020

Travel Agency Weekly Bookings for Future Travel to Hawai'i as of November 2, 2020
Canada



Source: Global Agency Pro, as of November 2, 2020

Travel Agency Weekly Bookings for Future Travel to Hawai'i as of November 2, 2020
Australia



Source: Global Agency Pro, as of November 2, 2020