

HTA COVID-19 UPDATE

(Issued: 11/13/20 @ 4:30pm)

Reason for Trip by Arrival Airport - Transpacific Screened Passengers as of 11/12/20	Honolulu (HNL)	Kahului (OGG)	Kona (KOA)	Lihue (LIH)	Grand Total
Airline Crew	307	97	64	56	524
Corporate Meeting	2	3	1	0	6
Essential Worker	69	27	15	3	114
Honeymoon	14	8	1	5	28
Incentive Trip	4	2	0	0	6
Intended Resident	106	21	27	6	160
Military or Federal Government	117	0	1	9	127
Other	62	26	13	11	112
Other Business	129	51	34	23	237
Pleasure/Vacation	1,529	1,243	509	523	3,804
Returning Resident	583	127	128	37	875
To Attend School	6	0	0	0	6
To Get Married	1	10	2	2	15
Transit	164	1	2	0	167
Visiting Friends or Relatives	875	197	187	147	1,406
(blank)	0	0	0	0	0
Grand Total	3,968	1,813	984	822	7,587

Source: Safe Travels program developed by the State of Hawaii Office of Enterprise Technology Services
Note: The data is preliminary and subject to change

Market Impact Update: <https://www.dropbox.com/11/13/20 HTA COVID19 Update>

Novel Coronavirus in Hawaii

COVID-19 Positive Cases

Cumulative totals as of 3:00pm on November 13, 2020

Total Confirmed Cases	16,412* (110 new)
Hawaii	1,459
Kauai	77
Lanai	106
Maui	443†
Molokai	17
Oahu	14,172
Out of State	138
Pending	0
Required Hospitalization	1187‡
Hawaii Deaths	222
Cases in the past 14 days	1,414**

Footnotes for COVID-19 Cases

* As a result of updated information, two cases on Kauai were re-categorized to Hawaii residents diagnosed outside of the state.

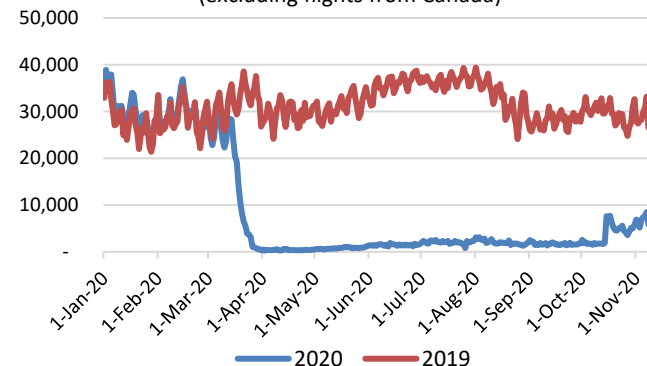
**Using cases reported in the past 14 days provides a rough approximation of the number of cases currently meeting criteria for isolation. This proxy number for "active cases" resolves classification issues for cases unable to be reached or who are out of jurisdiction, for whom precise release from isolation date may not be possible to determine. It is also not influenced by lags in data entry.

†One case is a Lanai resident whose exposure is on Maui Island and who will be remaining on Maui Island for the interim.

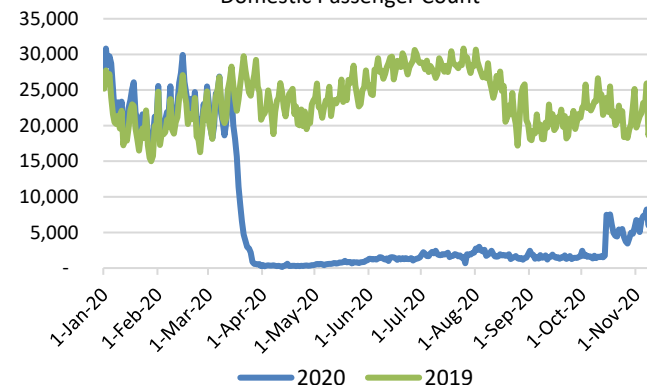
‡Includes Hawaii residents hospitalized out of state.

§Includes cases that meet isolation release criteria (Isolation should be maintained until at least 24 hours after resolution of fever and myalgia without the use of antipyretics OR at least 10 days have passed since symptom onset, whichever is longer). (The cases that have died and one case that has left the jurisdiction have been removed from these counts). Positive cases include confirmed cases, and Hawaii residents and non-residents; data are preliminary and subject to change. Note that CDC provides case counts according to states of residence.

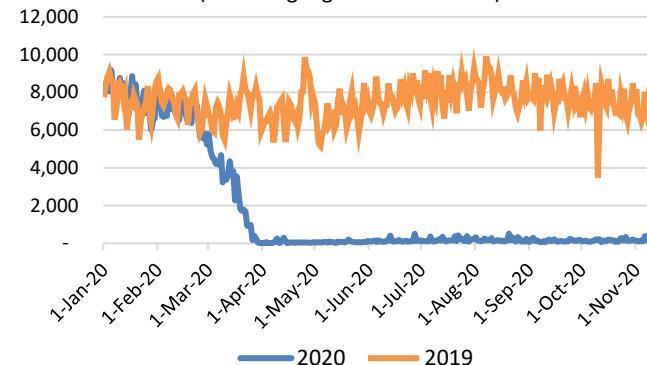
Total Passenger Count
(excluding flights from Canada)



Domestic Passenger Count



International Passenger Count
(excluding flights from Canada)

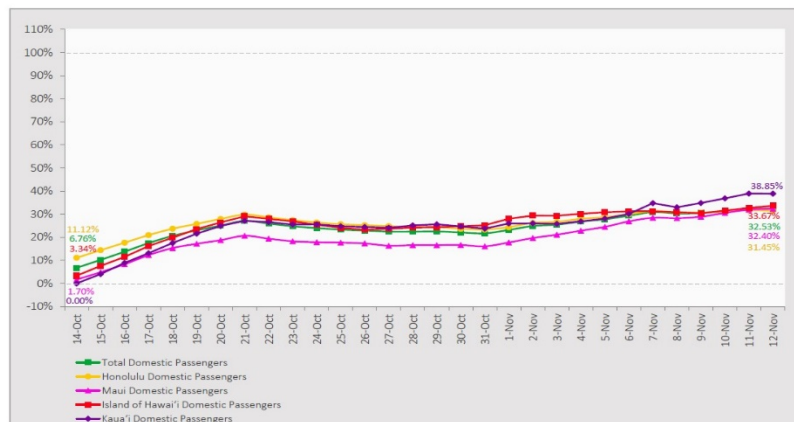


Daily Passenger Count Table

11/12/2020	Domestic	International	Total
Oahu	3542	92	3634
Maui	1617		1617
Island of Hawaii	822		822
Kauai	620		620
State	6601	92	6693

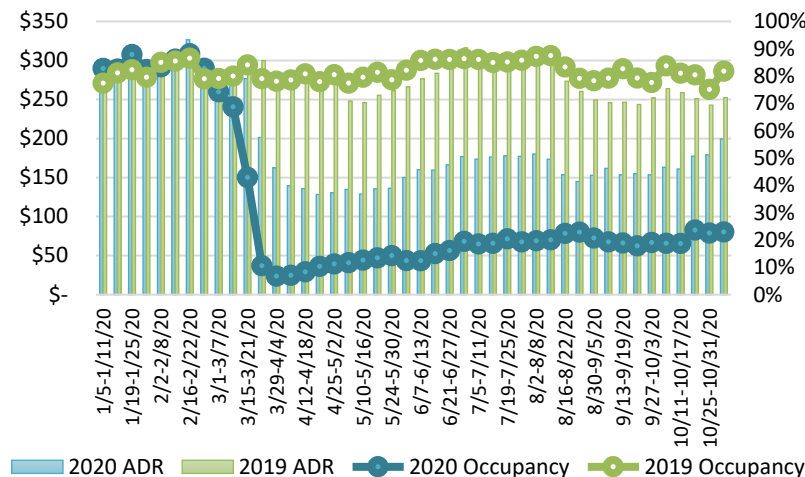
7-Day Domestic by Island Moving Average Daily Passenger Volume

2020 Volume as Percentage of 2019 Volume
Through November 12, 2020



Source: HVCB analysis based on data from DBEDT
Note: Passenger volume figures include both visitors and residents.

State of Hawai'i Hotel Performance by Week - 2020 vs 2019



Source: STR, Inc. © Copyright 2020 Hawai'i Tourism Authority

Hawaii Hotel Performance Info:

For the week of November 1 – November 7, 2020

	Occupancy	ADR	RevPAR
State of Hawaii	22.9%	\$ 199.34	\$ 45.70
Oahu	24.0%	\$ 161.02	\$ 38.65
Maui County	18.4%	\$ 302.43	\$ 55.55
Kauai County	25.6%	\$ 198.64	\$ 50.91
Island of Hawaii	28.1%	\$ 182.21	\$ 51.25

Domestic by Island Month-to-Date and Year-to-Date Daily Passenger Volume

2020 Volume versus 2019 Volume
Through November 12, 2020

November 2020 (Month-to-Date through November 12)

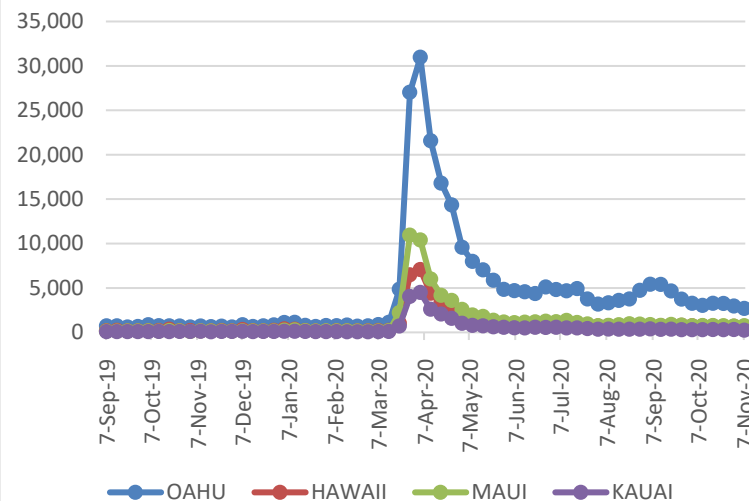
	2020	2019	Volume Change	Percent Change
Honolulu	44,356	144,488	-100,132	-69.3%
Maui County	19,229	66,967	-47,738	-71.3%
Island of Hawai'i	8,444	26,184	-17,740	-67.8%
Kaua'i	7,593	22,914	-15,321	-66.9%
Total	79,622	260,553	-180,931	-69.4%

2020 (Year-to-Date through November 12)

	2020	2019	Volume Change	Percent Change
Honolulu	1,238,220	3,854,324	-2,616,104	-67.9%
Maui County	477,069	1,875,718	-1,398,649	-74.6%
Island of Hawai'i	240,390	821,708	-581,318	-70.7%
Kaua'i	160,465	640,622	-480,157	-75.0%
Total	2,116,144	7,192,372	-5,076,229	-70.6%

Source: HVCB analysis based on data from DBEDT
Note: Passenger volume figures include both visitors and residents. Total includes other international passengers. 2020 includes one additional day due to Leap Year (February 29th, 2020).

2020 Initial Weekly Unemployment Claims by Island



Weekly Unemployment Initial Claims: November 7, 2020

State of Hawaii	4,277
C&C of Oahu	2,674
Hawaii County	526
Maui County	725
Kauai County	228
Agent (filed in Hawaii against another state)	124

News Highlights

November 13, 2020

Hawaii News Now: [No Hawaii hospitals have what's needed to properly store the leading COVID-19 vaccine](#)

KHON2: [CVS Health expands no-cost COVID-19 testing services across Hawaii](#)

KHON2: [Four clusters linked to school identified on Oahu](#)

KITV4: [If average COVID-19 case count increases, Kauai County could jump back to Tier 3](#)

Hawaii Public Radio: [The Latest: 0 Deaths, 97 New Cases Statewide; Lanai Under Fewer Restrictions As Isle Cases Level Off](#)

The Maui News: [COVID-19 jump-starts early holiday shopping](#)

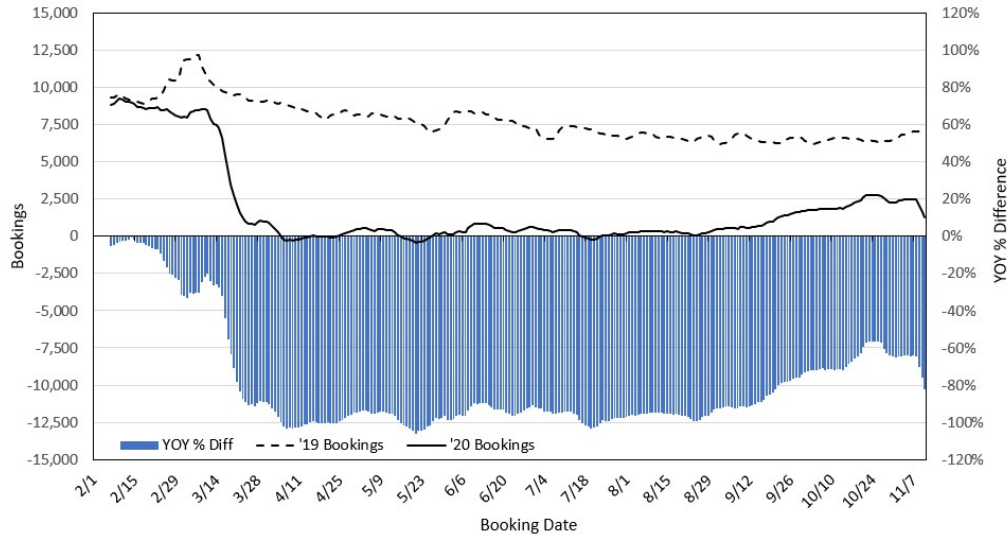
The Garden Island: [5 new cases highest in five months](#)

Reason: [Brickbat: Aloha! Here's Your Fine.](#)

SF Gate: [Compromised COVID-19 test sends Bay Area woman back home from Hawaii](#)

Time: [COVID-19 Is Reaching the Last Coronavirus-Free Nations on Earth](#)

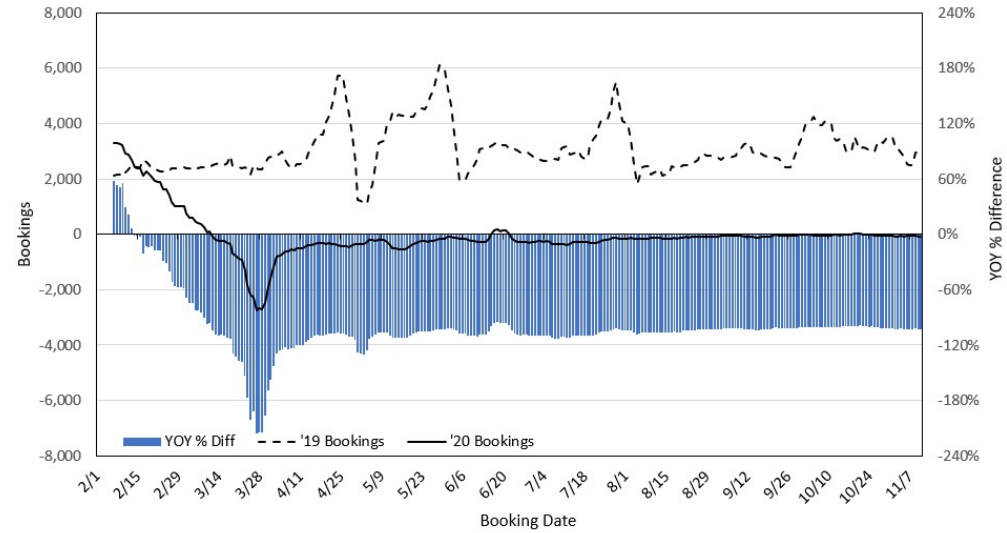
Travel Agency Bookings to Hawaii for Future Arrivals* Based on a 7-day Moving Average, 2020 vs 2019 U.S.



*Future Arrivals refers to all arrivals that are 'future' relative to the referenced booking date.
Source: Global Agency Pro

Update: Nov 11, 2020

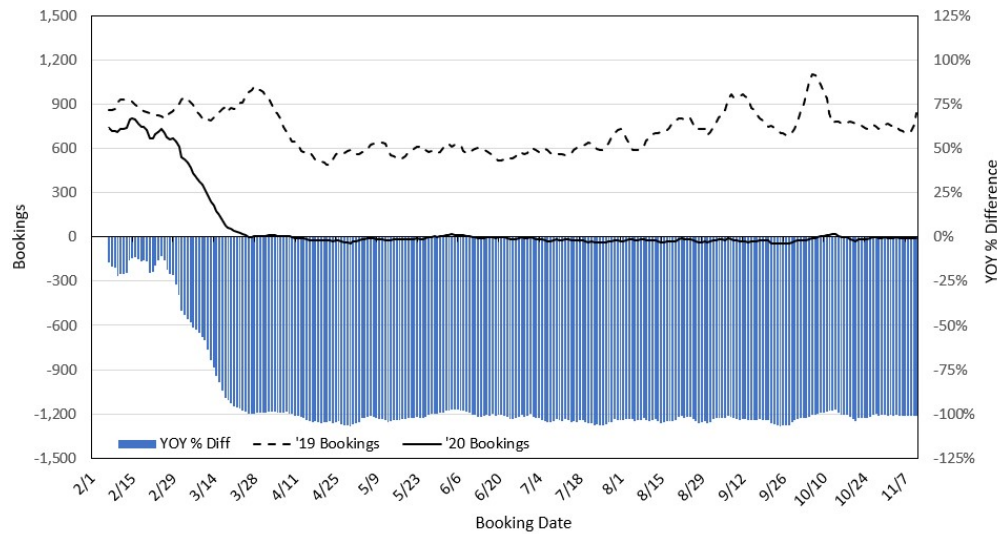
Travel Agency Bookings to Hawaii for Future Arrivals* Based on a 7-day Moving Average, 2020 vs 2019 Japan



*Future Arrivals refers to all arrivals that are 'future' relative to the referenced booking date.
Source: Global Agency Pro

Update: Nov 11, 2020

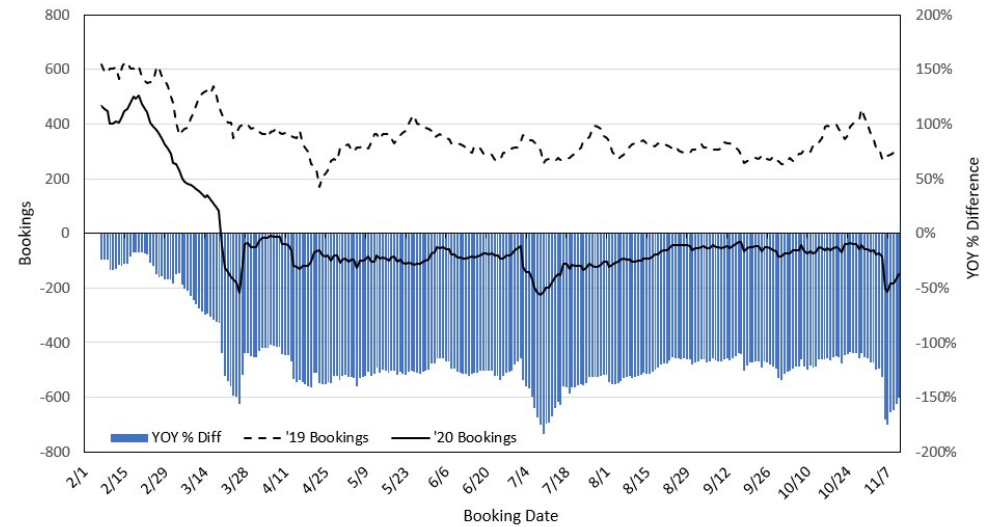
Travel Agency Bookings to Hawaii for Future Arrivals* Based on a 7-day Moving Average, 2020 vs 2019 Canada



*Future Arrivals refers to all arrivals that are 'future' relative to the referenced booking date.
Source: Global Agency Pro

Update: Nov 11, 2020

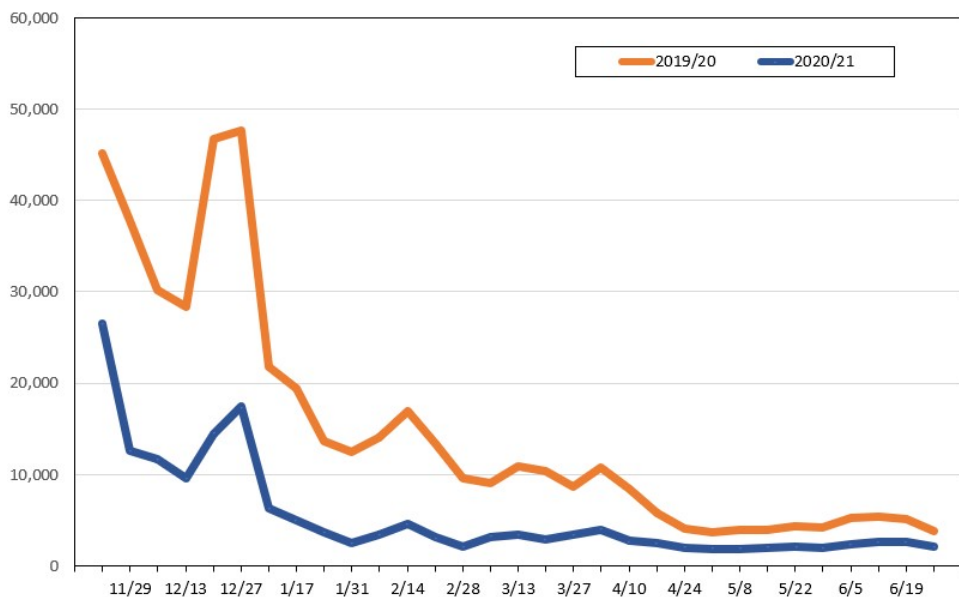
Travel Agency Bookings to Hawaii for Future Arrivals* Based on a 7-day Moving Average, 2020 vs 2019 Australia



*Future Arrivals refers to all arrivals that are 'future' relative to the referenced booking date.
Source: Global Agency Pro

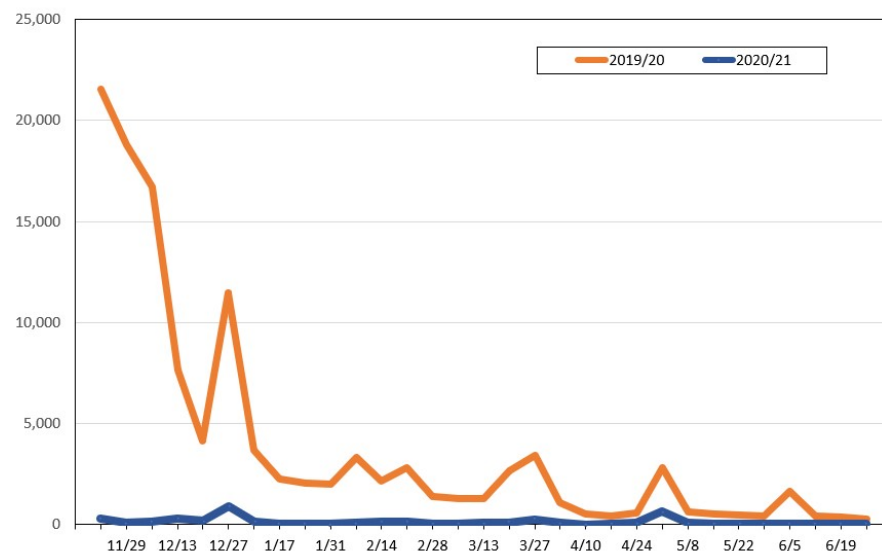
Update: Nov 11, 2020

Travel Agency Weekly Bookings for Future Travel to Hawai'i as of November 11, 2020
U.S.



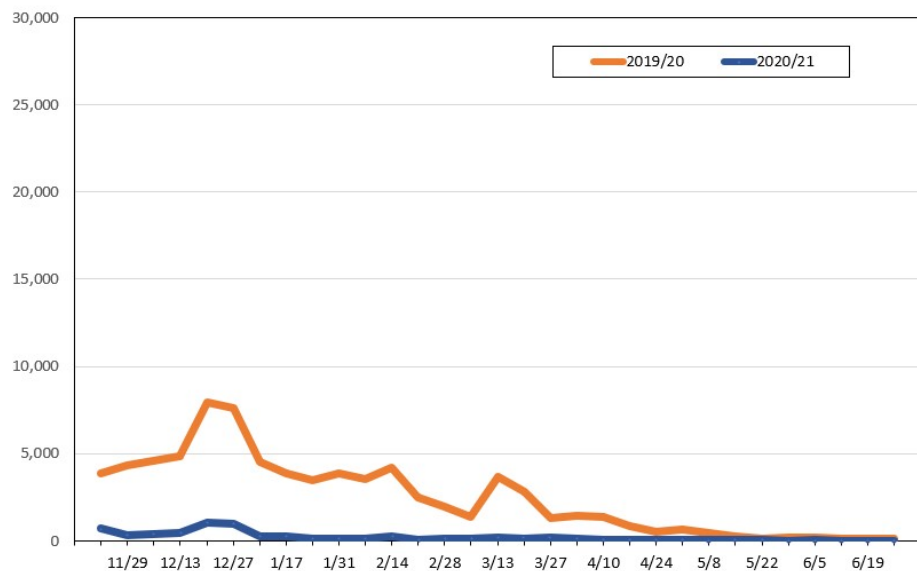
Source: Global Agency Pro, as of November 11, 2020

Travel Agency Weekly Bookings for Future Travel to Hawai'i as of November 11, 2020
Japan



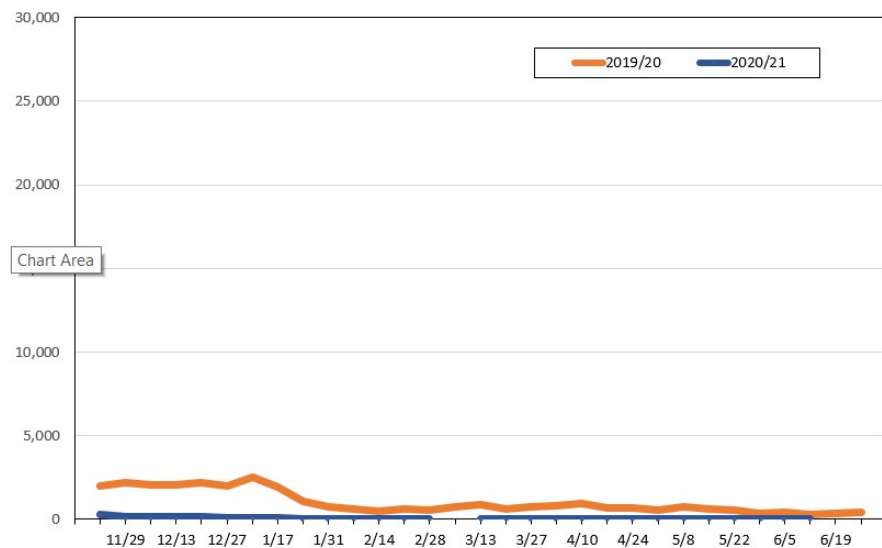
Source: Global Agency Pro, as of November 11, 2020

Travel Agency Weekly Bookings for Future Travel to Hawai'i as of November 11, 2020
Canada



Source: Global Agency Pro, as of November 11, 2020

Travel Agency Weekly Bookings for Future Travel to Hawai'i as of November 11, 2020
Australia



Source: Global Agency Pro, as of November 11, 2020