

# HTA COVID-19 UPDATE

(Issued: 11/16/20 @ 4:30pm)

Reason for Trip by Arrival Airport - Transpacific Screened Passengers as of 11/15/20	Honolulu (HNL)	Kahului (OGG)	Kona (KOA)	Lihue (LIH)	Grand Total
Airline Crew	262	111	72	52	497
Corporate Meeting	2	7	0	0	9
Essential Worker	137	27	15	10	189
Honeymoon	11	15	0	11	37
Intended Resident	103	24	22	4	153
Military or Federal Government	212	1	3	3	219
Other	34	18	12	19	83
Other Business	127	81	40	23	271
Pleasure/Vacation	1,182	1,425	560	522	3,689
Returning Resident	740	150	122	35	1,047
To Attend School	5	0	2	2	9
To Get Married	0	8	0	2	10
Transit	160	2	0	1	163
Visiting Friends or Relatives	533	154	125	62	874
<b>Grand Total</b>	<b>3,508</b>	<b>2,023</b>	<b>973</b>	<b>746</b>	<b>7,250</b>
<b>Source:</b> Safe Travels program developed by the State of Hawaii Office of Enterprise Technology Services <b>Note:</b> The data is preliminary and subject to change					

Market Impact Update: <https://www.dropbox.com/11/16/20 HTA COVID19 Update>

## Novel Coronavirus in Hawaii

### COVID-19 Positive Cases

Cumulative totals as of 3:00pm on November 16, 2020

Total Confirmed Cases	16,613* (95 new)
Hawaii	1,479
Kauai	82
Lanai	106
Maui	450†
Molokai	17
Oahu	14,337
Out of State	142
Pending	0
Required Hospitalization	1,210‡
Hawaii Deaths	222
Cases in the past 14 days	1,466**

### Footnotes for COVID-19 Cases

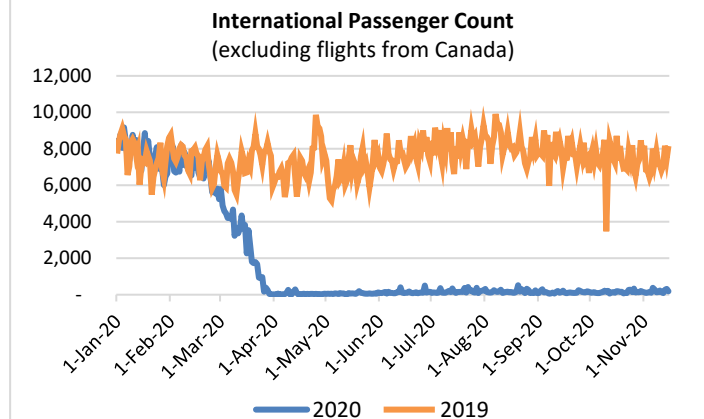
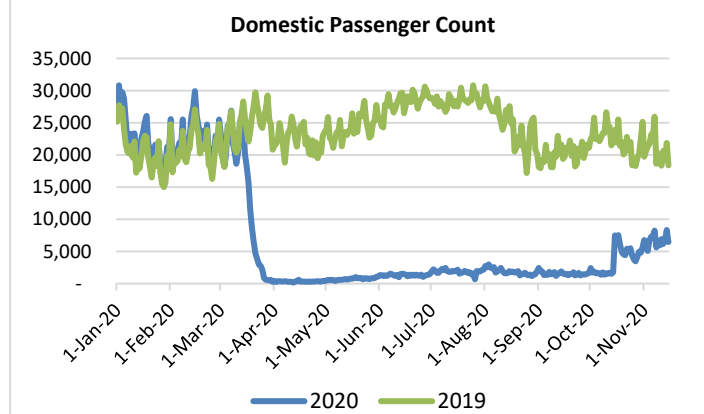
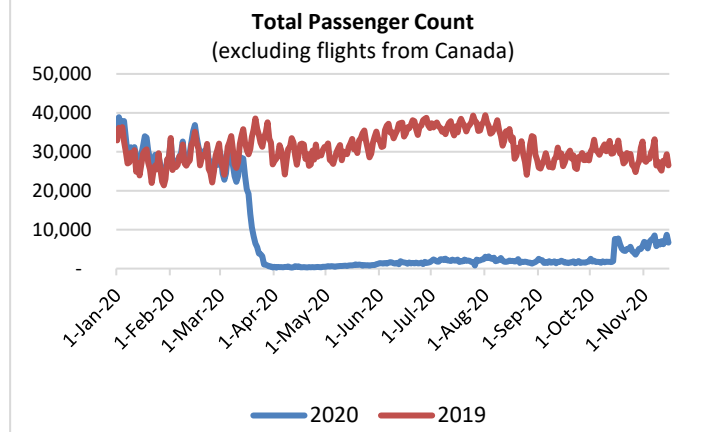
\*As a result of updated information, one case on Maui was removed from the counts.

\*\*Using cases reported in the past 14 days provides a rough approximation of the number of cases currently meeting criteria for isolation. This proxy number for "active cases" resolves classification issues for cases unable to be reached or who are out of jurisdiction, for whom precise release from isolation date may not be possible to determine. It is also not influenced by lags in data entry.

†One case is a Lanai resident whose exposure is on Maui Island and who will be remaining on Maui Island for the interim.

‡Includes Hawaii residents hospitalized out of state.

§Includes cases that meet isolation release criteria (Isolation should be maintained until at least 24 hours after resolution of fever and myalgia without the use of antipyretics OR at least 10 days have passed since symptom onset, whichever is longer). (The cases that have died and one case that has left the jurisdiction have been removed from these counts). Positive cases include confirmed cases, and Hawaii residents and non-residents; data are preliminary and subject to change. Note that CDC provides case counts according to states of residence.

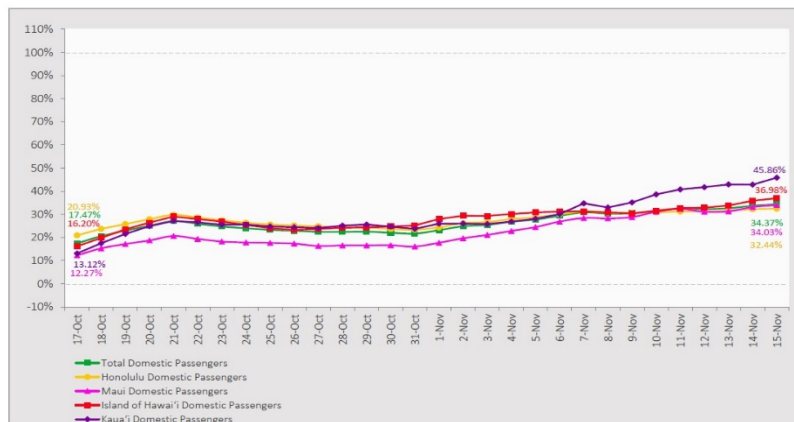


### Daily Passenger Count Table

11/15/2020	Domestic	International	Total
Oahu	3244	187	3431
Maui	1814		1814
Island of Hawaii	749		749
Kauai	658		658
State	6465	187	6652

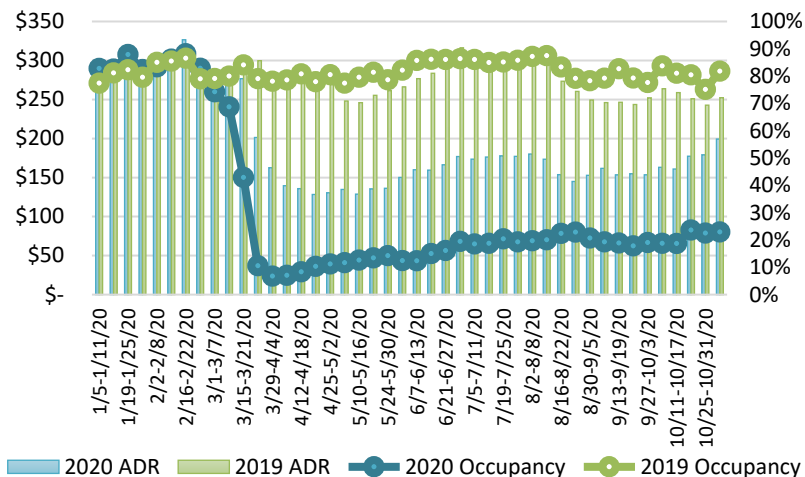
## 7-Day Domestic by Island Moving Average Daily Passenger Volume

2020 Volume as Percentage of 2019 Volume  
Through November 15, 2020



Source: HVCB analysis based on data from DBEDT  
Note: Passenger volume figures include both visitors and residents.

## State of Hawai'i Hotel Performance by Week - 2020 vs 2019



Source: STR, Inc. © Copyright 2020 Hawai'i Tourism Authority

## Hawaii Hotel Performance Info:

For the week of November 1 – November 7, 2020

	Occupancy	ADR	RevPAR
State of Hawaii	22.9%	\$ 199.34	\$ 45.70
Oahu	24.0%	\$ 161.02	\$ 38.65
Maui County	18.4%	\$ 302.43	\$ 55.55
Kauai County	25.6%	\$ 198.64	\$ 50.91
Island of Hawaii	28.1%	\$ 182.21	\$ 51.25

## Domestic by Island Month-to-Date and Year-to-Date Daily Passenger Volume

2020 Volume versus 2019 Volume  
Through November 15, 2020

November 2020 (Month-to-Date through November 15)

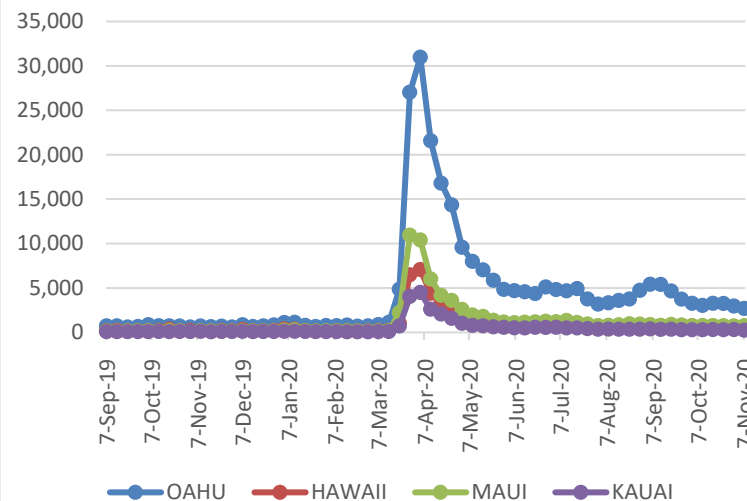
	2020	2019	Volume Change	Percent Change
Honolulu	55,057	176,894	-121,837	-68.9%
Maui County	24,649	81,759	-57,110	-69.9%
Island of Hawai'i	10,718	31,947	-21,229	-66.5%
Kauai	10,316	28,095	-17,779	-63.3%
Total	100,740	318,695	-217,955	-68.4%

2020 (Year-to-Date through November 15)

	2020	2019	Volume Change	Percent Change
Honolulu	1,238,220	3,854,324	-2,616,104	-67.9%
Maui County	477,069	1,875,718	-1,398,649	-74.6%
Island of Hawai'i	240,390	821,708	-581,318	-70.7%
Kauai	160,465	640,622	-480,157	-75.0%
Total	2,116,144	7,192,372	-5,076,229	-70.6%

Source: HVCB analysis based on data from DBEDT  
Note: Passenger volume figures include both visitors and residents. Total includes other international passengers. 2020 includes one additional day due to Leap Year (February 29th, 2020).

## 2020 Initial Weekly Unemployment Claims by Island



## Weekly Unemployment Initial Claims: November 7, 2020

State of Hawaii	4,277
C&C of Oahu	2,674
Hawaii County	526
Maui County	725
Kauai County	228
Agent (filed in Hawaii against another state)	124

## News Highlights

November 16, 2020

Honolulu Star Advertiser: [Hawaii running out of time to spend CARES Act money](#)

Honolulu Star Advertiser: [Lanai first in state to test virus alert app](#)

Hawaii News Now: [Travel editor cautions his followers against booking a Hawaii trip until 2021](#)

KHON2: [CVS begins free curbside COVID-19 testing](#)

KHON2: [Kauai counting new group of cases not identified by state](#)

KHON2: [Maui to launch departure surveillance testing program](#)

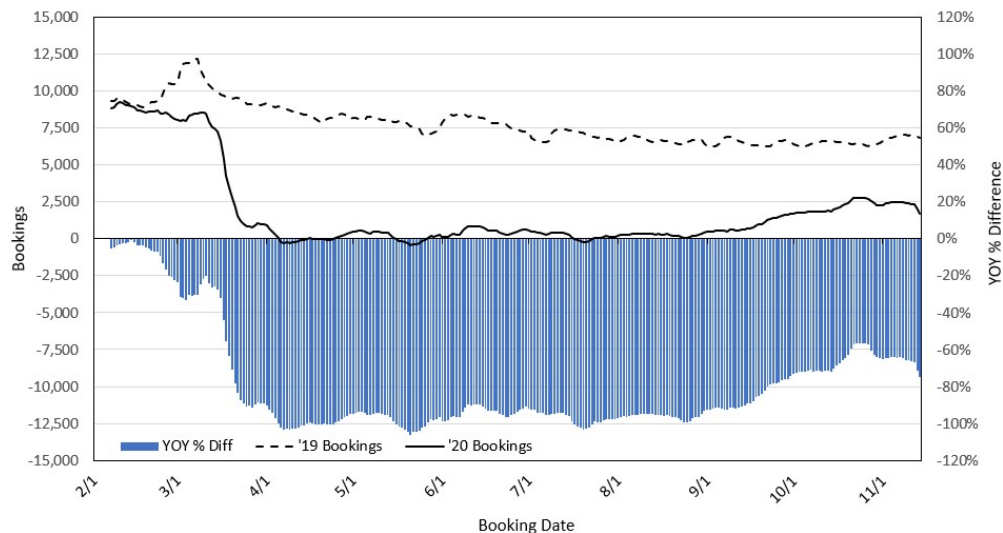
Maui Now: [State Adds "Trusted Partners" for Domestic Trans-Pacific, Inter-County Pre-Travel Testing Program](#)

Honolulu Civil Beat: [Let's Put CARES Act Money Into The Hands Of People Who Will Spend It Immediately](#)

TravelAge West: [Some Say a COVID-19 Vaccine Will Be a Turning Point for Travel. Will It?](#)

USA Today: [Stay-home efforts, governor missteps, strained hospitals: News from around our 50 states](#)

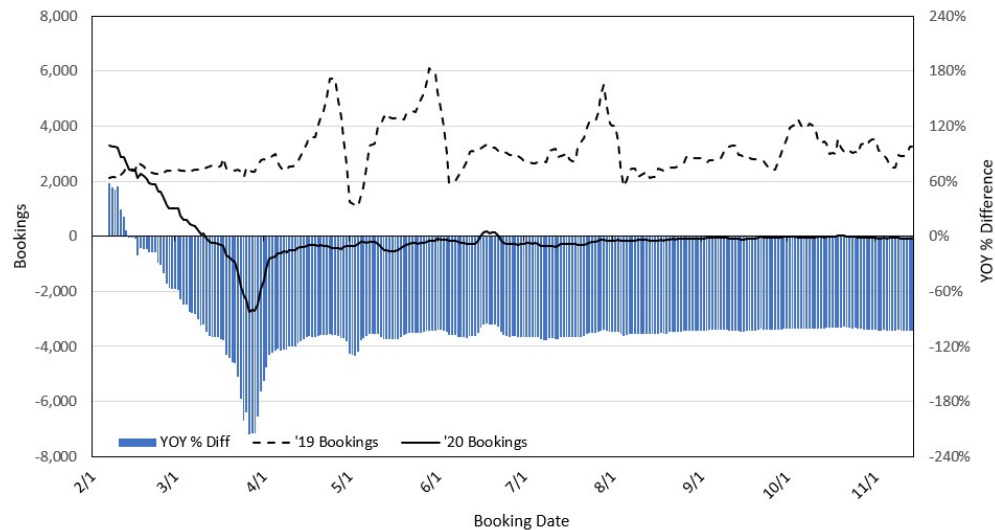
### Travel Agency Bookings to Hawaii for Future Arrivals\* Based on a 7-day Moving Average, 2020 vs 2019 U.S.



\*Future Arrivals refers to all arrivals that are 'future' relative to the referenced booking date.  
Source: Global Agency Pro

Update: Nov 14, 2020

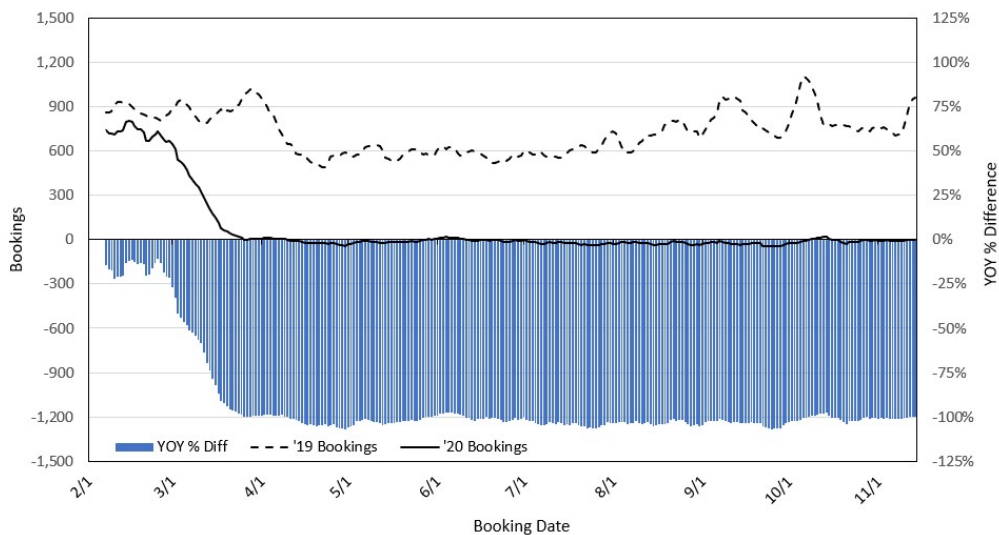
### Travel Agency Bookings to Hawaii for Future Arrivals\* Based on a 7-day Moving Average, 2020 vs 2019 Japan



\*Future Arrivals refers to all arrivals that are 'future' relative to the referenced booking date.  
Source: Global Agency Pro

Update: Nov 14, 2020

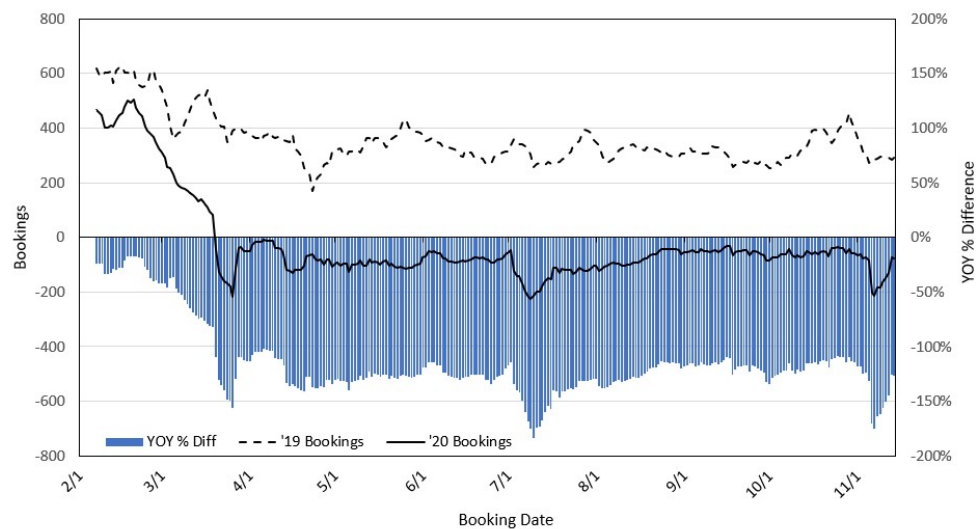
### Travel Agency Bookings to Hawaii for Future Arrivals\* Based on a 7-day Moving Average, 2020 vs 2019 Canada



\*Future Arrivals refers to all arrivals that are 'future' relative to the referenced booking date.  
Source: Global Agency Pro

Update: Nov 14, 2020

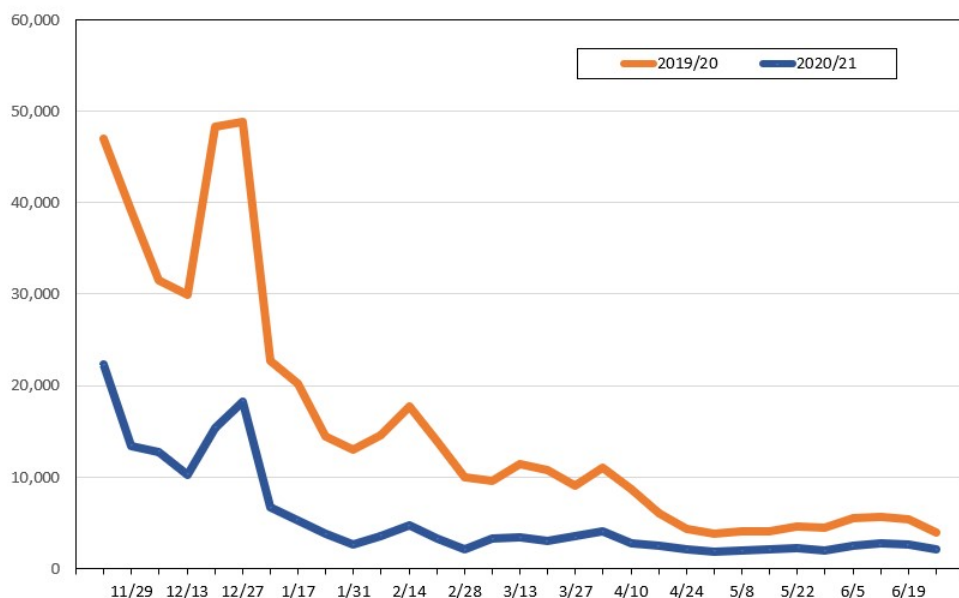
### Travel Agency Bookings to Hawaii for Future Arrivals\* Based on a 7-day Moving Average, 2020 vs 2019 Australia



\*Future Arrivals refers to all arrivals that are 'future' relative to the referenced booking date.  
Source: Global Agency Pro

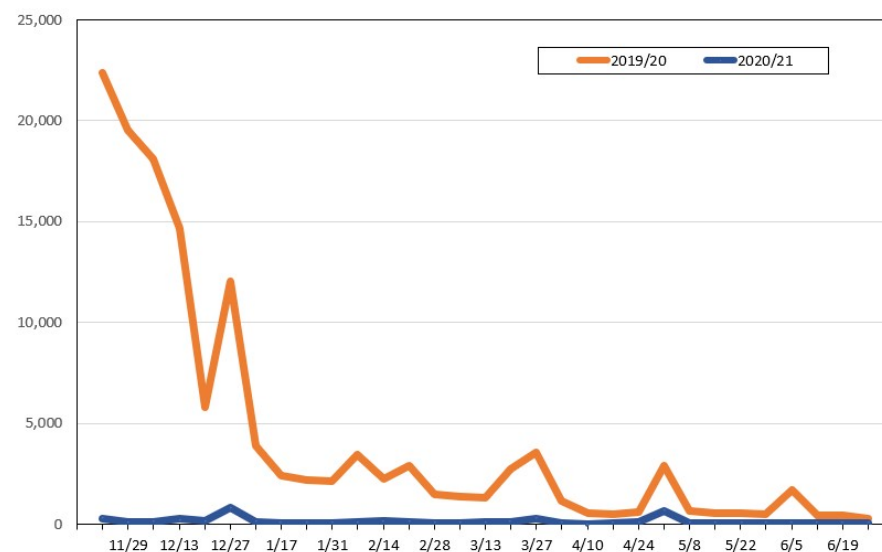
Update: Nov 14, 2020

**Travel Agency Weekly Bookings for Future Travel to Hawai'i as of November 14, 2020**  
**U.S.**



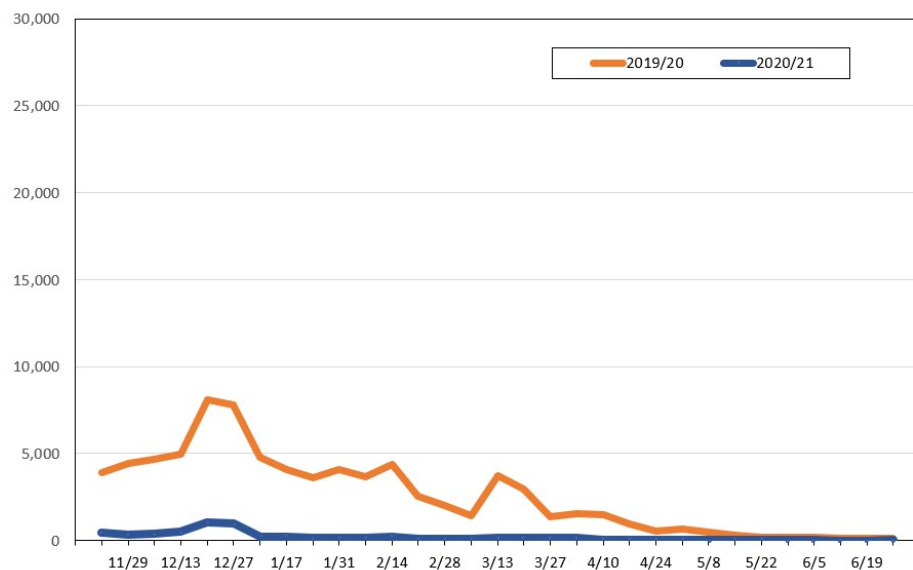
Source: Global Agency Pro, as of November 14, 2020

**Travel Agency Weekly Bookings for Future Travel to Hawai'i as of November 14, 2020**  
**Japan**



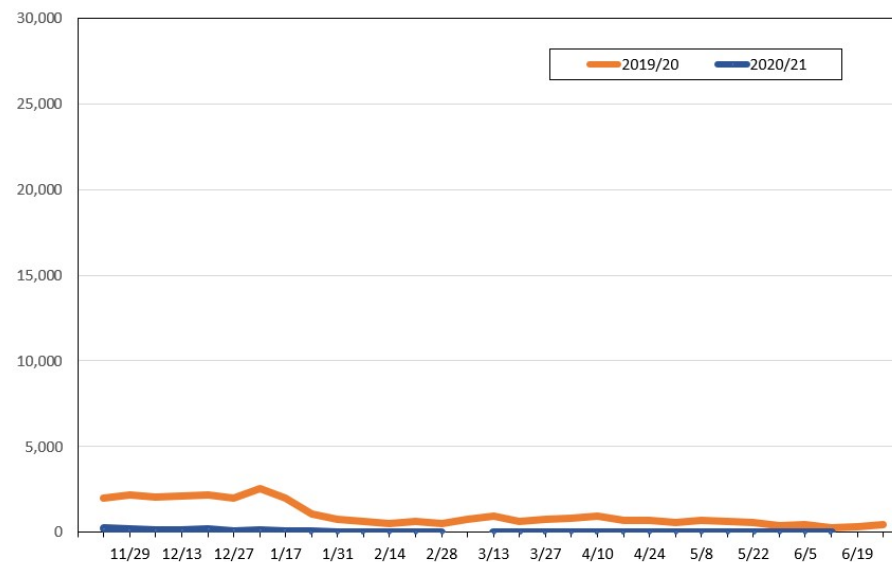
Source: Global Agency Pro, as of November 14, 2020

**Travel Agency Weekly Bookings for Future Travel to Hawai'i as of November 14, 2020**  
**Canada**



Source: Global Agency Pro, as of November 14, 2020

**Travel Agency Weekly Bookings for Future Travel to Hawai'i as of November 14, 2020**  
**Australia**



Source: Global Agency Pro, as of November 14, 2020