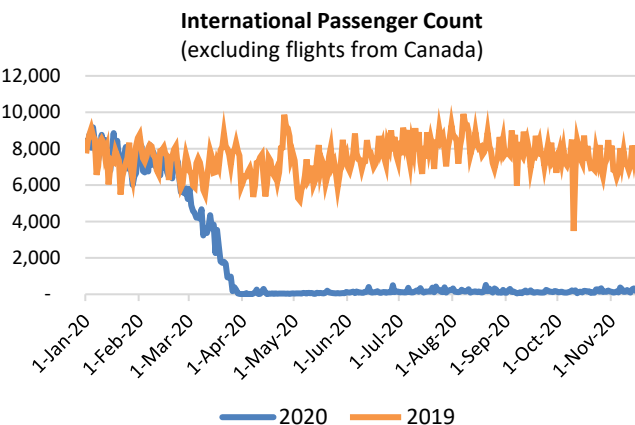
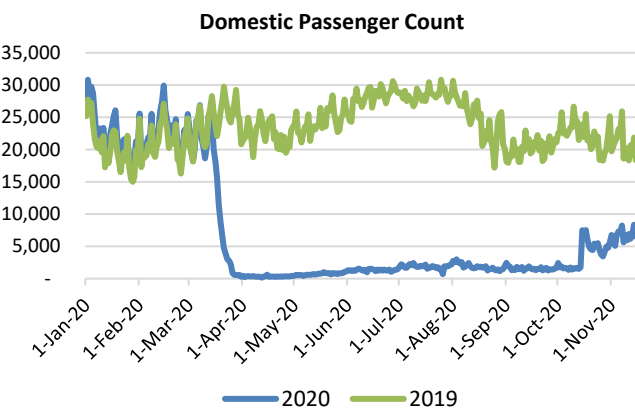
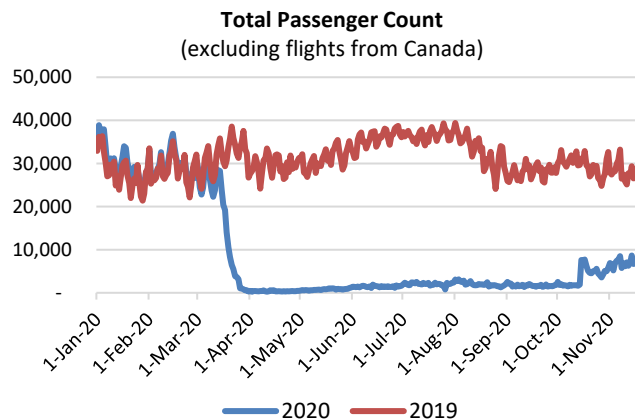


# HTA COVID-19 UPDATE

(Issued: 11/17/20 @ 4:30pm)

| Reason for Trip by Arrival Airport - Transpacific Screened Passengers as of 11/16/20  | Honolulu (HNL) | Kahului (OGG) | Kona (KOA) | Lihue (LIH) | Grand Total  |
|---|----------------|---------------|------------|-------------|--------------|
| Airline Crew  | 346            | 98            | 54         | 56          | 554          |
| Corporate Meeting   | 4              | 0             | 4          | 1           | 9            |
| Essential Worker  | 142            | 30            | 15         | 8           | 195          |
| Honeymoon   | 12             | 19            | 2          | 9           | 42           |
| Incentive Trip  | 1              | 1             | 0          | 0           | 2            |
| Intended Resident   | 111            | 39            | 22         | 16          | 188          |
| Military or Federal Government  | 260            | 3             | 3          | 1           | 267          |
| Other   | 55             | 9             | 10         | 2           | 76           |
| Other Business  | 155            | 67            | 48         | 18          | 288          |
| Pleasure/Vacation   | 1,191          | 1,039         | 369        | 435         | 3,034        |
| Returning Resident  | 1,065          | 199           | 138        | 44          | 1,446        |
| Sports Event  | 2              | 0             | 2          | 0           | 4            |
| To Attend School  | 6              | 0             | 1          | 0           | 7            |
| To Get Married  | 8              | 6             | 0          | 1           | 15           |
| Transit   | 217            | 3             | 1          | 0           | 221          |
| Visiting Friends or Relatives   | 863            | 227           | 166        | 71          | 1,327        |
| <b>Grand Total</b>  | <b>4,438</b>   | <b>1,740</b>  | <b>835</b> | <b>662</b>  | <b>7,675</b> |
| <b>Source:</b> Safe Travels program developed by the State of Hawaii Office of Enterprise Technology Services<br><b>Note:</b> The data is preliminary and subject to change |                |               |            |             |              |

Market Impact Update: <https://www.dropbox.com/11/17/20 HTA COVID19 Update>



**Daily Passenger Count Table**

| 11/16/2020       | Domestic | International | Total |
|------------------|----------|---------------|-------|
| Oahu             | 4245     | 138           | 4383  |
| Maui             | 1557     |               | 1557  |
| Island of Hawaii | 671      |               | 671   |
| Kauai            | 576      |               | 576   |
| State            | 7049     | 138           | 7187  |

## Novel Coronavirus in Hawaii

### COVID-19 Positive Cases

Cumulative totals as of 3:00pm on November 17, 2020

| Total Confirmed Cases     | 16,665* (53 new) |
|---------------------------|------------------|
| Hawaii                    | 1,485            |
| Kauai                     | 82               |
| Lanai                     | 106              |
| Maui                      | 452†             |
| Molokai                   | 17               |
| Oahu                      | 14,373           |
| Out of State              | 150              |
| Pending                   | 0                |
| Required Hospitalization  | 1,212‡           |
| Hawaii Deaths             | 222              |
| Cases in the past 14 days | 1,440**          |

### Footnotes for COVID-19 Cases

\*As a result of updated information, one case on Oahu was removed from the counts.

\*\*Using cases reported in the past 14 days provides a rough approximation of the number of cases currently meeting criteria for isolation. This proxy number for "active cases" resolves classification issues for cases unable to be reached or who are out of jurisdiction, for whom precise release from isolation date may not be possible to determine. It is also not influenced by lags in data entry.

†One case is a Lanai resident whose exposure is on Maui Island and who will be remaining on Maui Island for the interim.

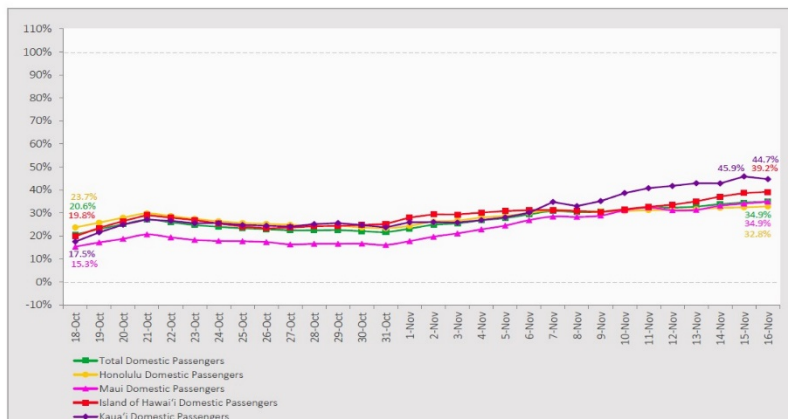
‡Includes Hawaii residents hospitalized out of state.

§Includes cases that meet isolation release criteria (Isolation should be maintained until at least 24 hours after resolution of fever and myalgia without the use of antipyretics OR at least 10 days have passed since symptom onset, whichever is longer). (The cases that have died and one case that has left the jurisdiction have been removed from these counts). Positive cases include confirmed cases, and Hawaii residents and non-residents; data are preliminary and subject to change. Note that CDC provides case counts according to states of residence.

## 7-Day Domestic by Island Moving Average Daily Passenger Volume

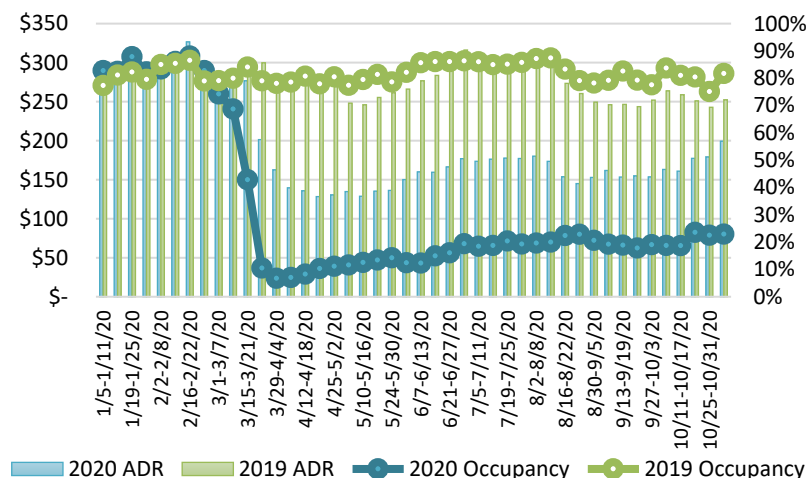
2020 Volume as Percentage of 2019 Volume

Through November 16, 2020



Source: HVCB analysis based on data from DBEDT  
Note: Passenger volume figures include both visitors and residents.

## State of Hawai'i Hotel Performance by Week - 2020 vs 2019



Source: STR, Inc. © Copyright 2020 Hawai'i Tourism Authority

## Hawaii Hotel Performance Info:

For the week of November 1 – November 7, 2020

|                         | Occupancy | ADR       | RevPAR   |
|-------------------------|-----------|-----------|----------|
| <b>State of Hawaii</b>  | 22.9%     | \$ 199.34 | \$ 45.70 |
| <b>Oahu</b>             | 24.0%     | \$ 161.02 | \$ 38.65 |
| <b>Maui County</b>      | 18.4%     | \$ 302.43 | \$ 55.55 |
| <b>Kauai County</b>     | 25.6%     | \$ 198.64 | \$ 50.91 |
| <b>Island of Hawaii</b> | 28.1%     | \$ 182.21 | \$ 51.25 |

## Domestic by Island Month-to-Date and Year-to-Date Daily Passenger Volume

2020 Volume versus 2019 Volume

Through November 16, 2020

November 2020 (Month-to-Date through November 16)

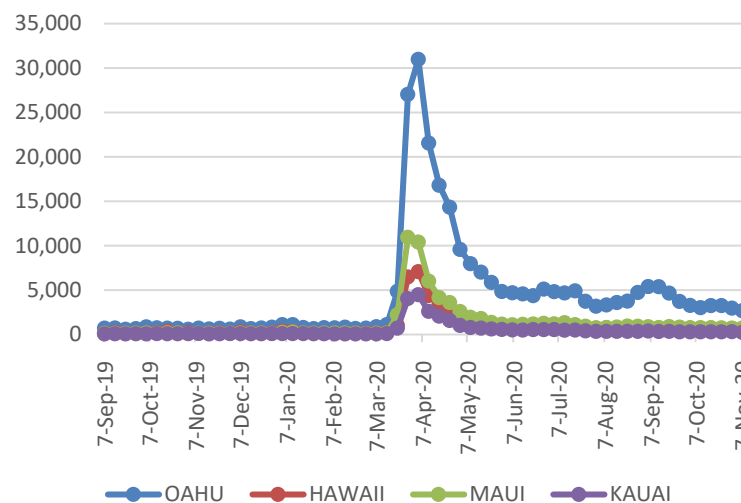
|                   | 2020           | 2019           | Volume Change   | Percent Change |
|-------------------|----------------|----------------|-----------------|----------------|
| Honolulu          | 59,302         | 188,351        | -129,049        | -68.5%         |
| Maui County       | 26,206         | 87,636         | -61,430         | -70.1%         |
| Island of Hawai'i | 11,609         | 34,405         | -22,796         | -66.3%         |
| Kauai             | 10,892         | 30,175         | -19,283         | -63.9%         |
| <b>Total</b>      | <b>108,009</b> | <b>340,567</b> | <b>-232,558</b> | <b>-68.3%</b>  |

2020 (Year-to-Date through November 16)

|                   | 2020             | 2019             | Volume Change     | Percent Change |
|-------------------|------------------|------------------|-------------------|----------------|
| Honolulu          | 1,238,220        | 3,854,324        | -2,616,104        | -67.9%         |
| Maui County       | 477,069          | 1,875,718        | -1,398,649        | -74.6%         |
| Island of Hawai'i | 240,390          | 821,708          | -581,318          | -70.7%         |
| Kauai             | 160,465          | 640,622          | -480,157          | -75.0%         |
| <b>Total</b>      | <b>2,116,144</b> | <b>7,192,372</b> | <b>-5,076,229</b> | <b>-70.6%</b>  |

Source: HVCB analysis based on data from DBEDT  
Note: Passenger volume figures include both visitors and residents. Total includes other international passengers. 2020 includes one additional day due to Leap Year (February 29th, 2020).

## 2020 Initial Weekly Unemployment Claims by Island



## Weekly Unemployment Initial Claims: November 7, 2020

|  |       |
|--|-------|
| <b>State of Hawaii</b>                               | 4,277 |
| <b>C&amp;C of Oahu</b>                               | 2,674 |
| <b>Hawaii County</b>                                 | 526   |
| <b>Maui County</b>                                   | 725   |
| <b>Kauai County</b>                                  | 228   |
| <b>Agent</b> (filed in Hawaii against another state) | 124   |

## News Highlights

November 17, 2020

**Hawaii News Now:** [Ige issues mask mandate, responding to concerns his previous order was unclear](#)

**Hawaii News Now:** [West Coast states urge against travel, putting Hawaii's fragile tourism recovery at risk](#)

**Hawaii News Now:** [Amid encouraging vaccine news, state releases draft vaccine distribution plan](#)

**West Hawaii Today:** [Kona hospital reports fifth COVID-19 death](#)

**The Maui News:** [Ige clarifies masks mandatory statewide](#)

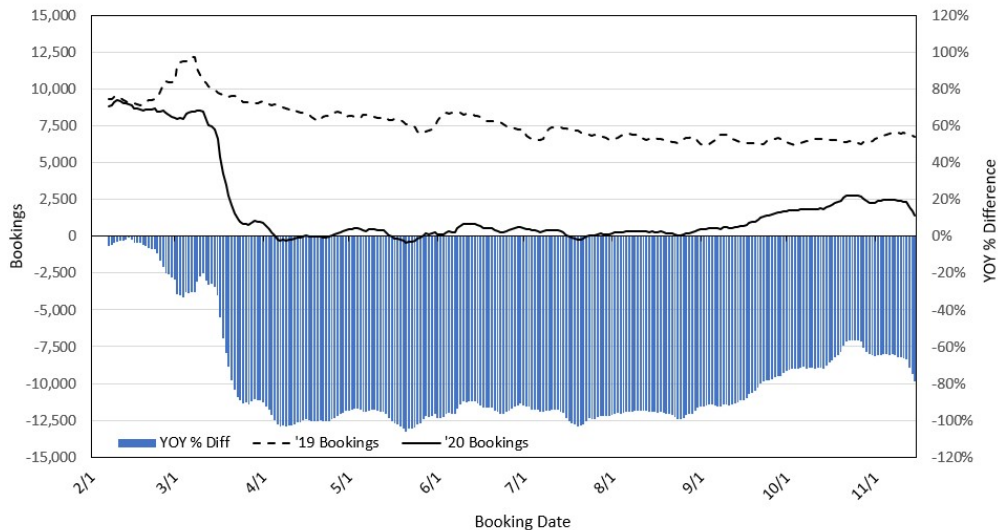
**Hawaii Tribune-Herald:** [Exceptions to Ige's statewide mask rule](#)

**The Garden Island:** [Kawakami proposes two new rules to safeguard island](#)

**Travel Pulse:** [Study Finds Top Concern When Traveling During COVID-19](#)

**USA Today:** [COVID-19 travel restrictions by state: What you need to know before you travel](#)

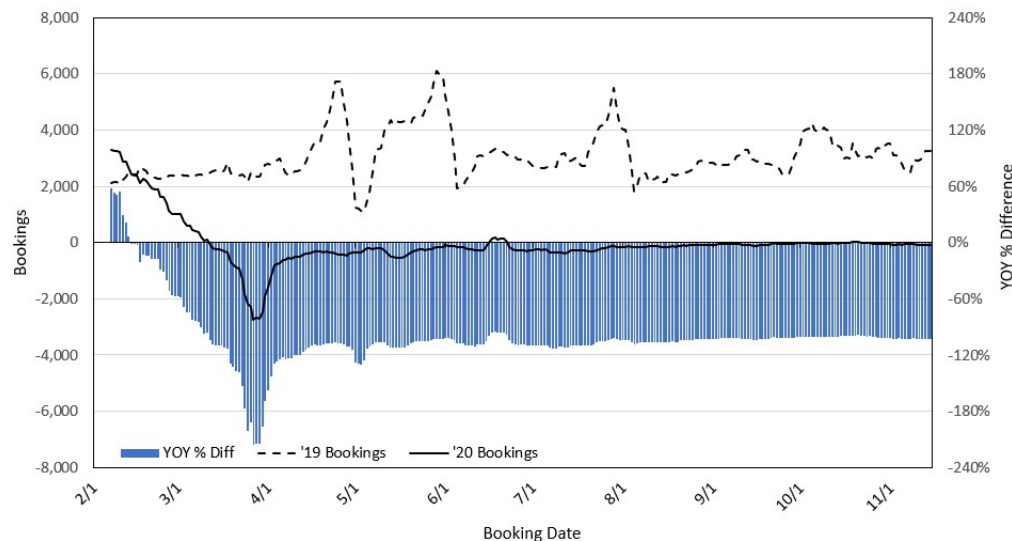
### Travel Agency Bookings to Hawaii for Future Arrivals\* Based on a 7-day Moving Average, 2020 vs 2019 U.S.



\*Future Arrivals refers to all arrivals that are 'future' relative to the referenced booking date.  
Source: Global Agency Pro

Update: Nov 15, 2020

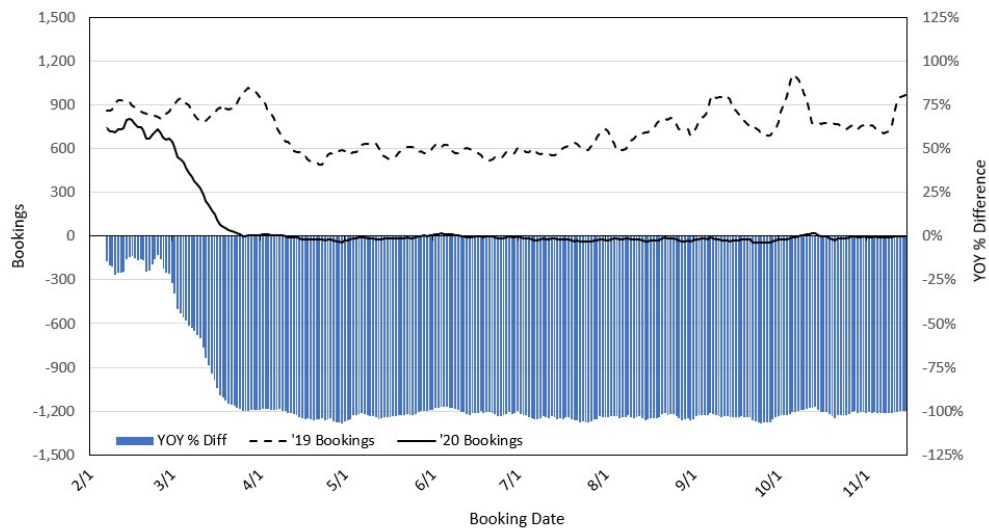
### Travel Agency Bookings to Hawaii for Future Arrivals\* Based on a 7-day Moving Average, 2020 vs 2019 Japan



\*Future Arrivals refers to all arrivals that are 'future' relative to the referenced booking date.  
Source: Global Agency Pro

Update: Nov 15, 2020

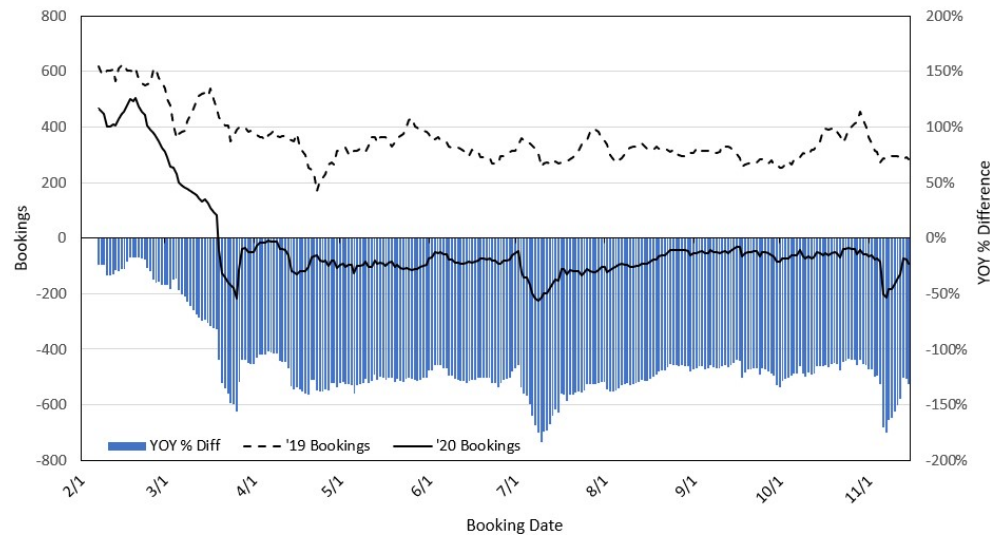
### Travel Agency Bookings to Hawaii for Future Arrivals\* Based on a 7-day Moving Average, 2020 vs 2019 Canada



\*Future Arrivals refers to all arrivals that are 'future' relative to the referenced booking date.  
Source: Global Agency Pro

Update: Nov 15, 2020

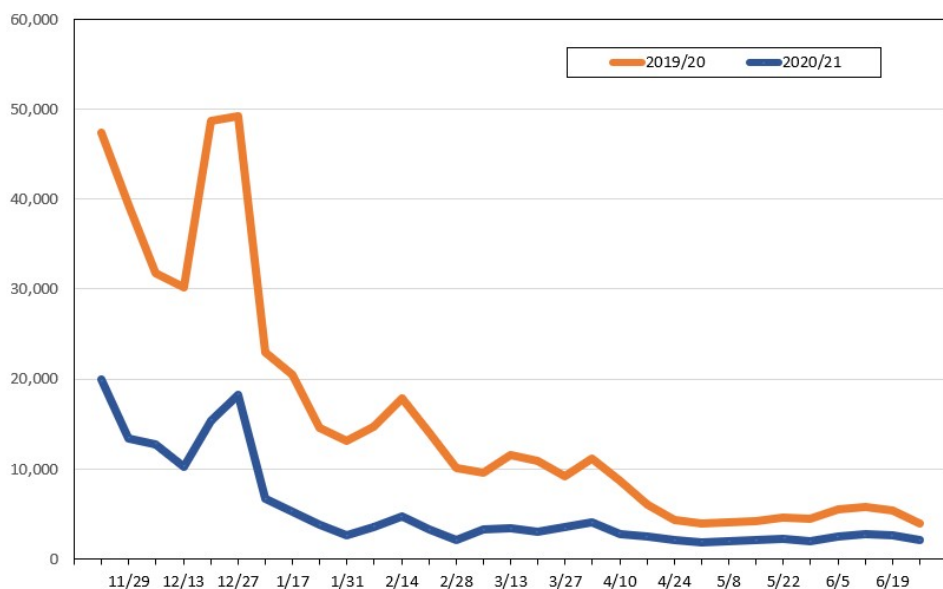
### Travel Agency Bookings to Hawaii for Future Arrivals\* Based on a 7-day Moving Average, 2020 vs 2019 Australia



\*Future Arrivals refers to all arrivals that are 'future' relative to the referenced booking date.  
Source: Global Agency Pro

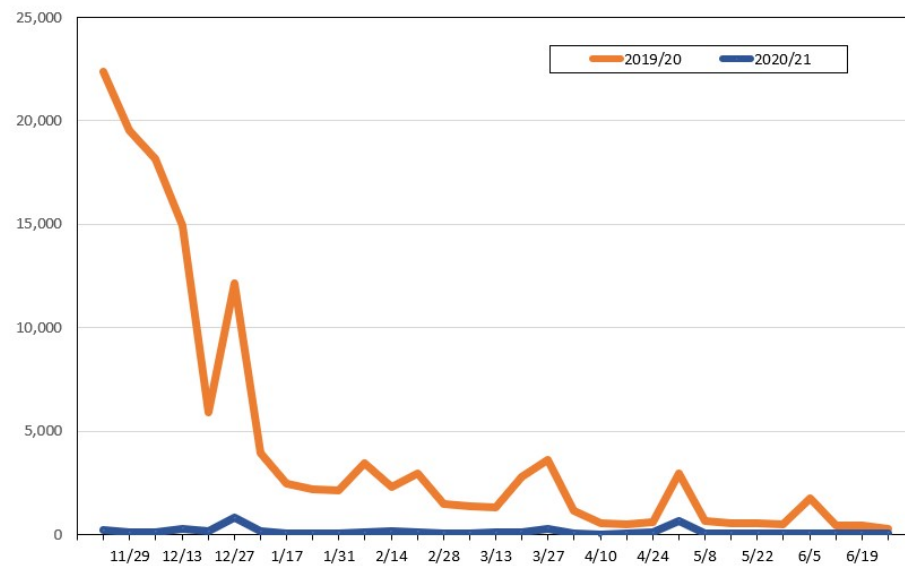
Update: Nov 15, 2020

**Travel Agency Weekly Bookings for Future Travel to Hawai'i as of November 15, 2020**  
U.S.



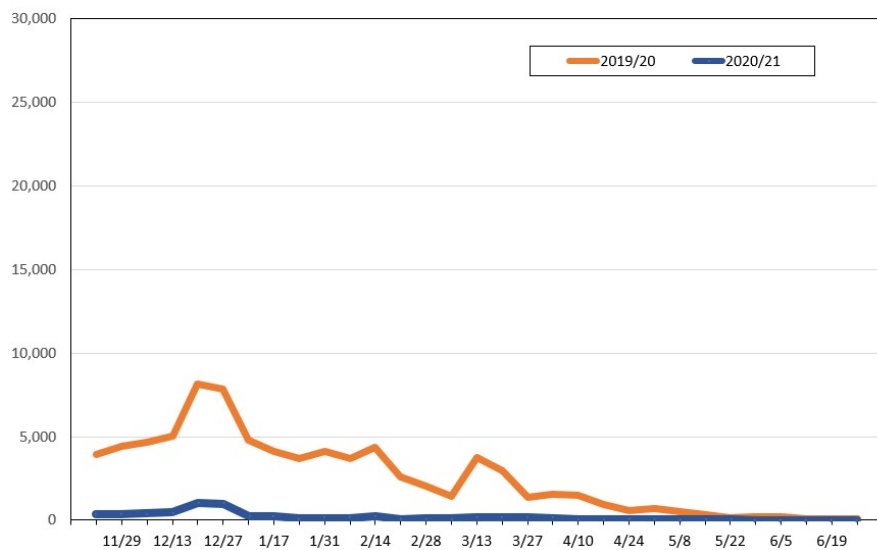
Source: Global Agency Pro, as of November 15, 2020

**Travel Agency Weekly Bookings for Future Travel to Hawai'i as of November 15, 2020**  
Japan



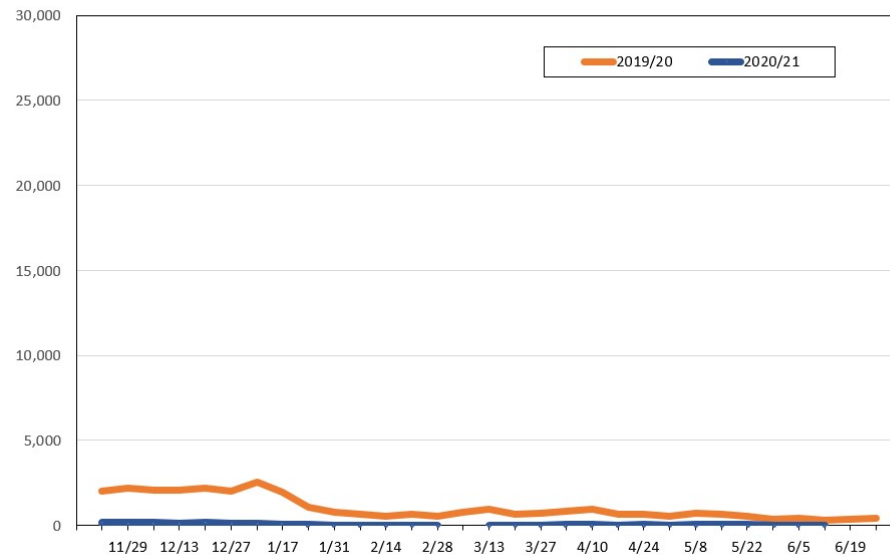
Source: Global Agency Pro, as of November 15, 2020

**Travel Agency Weekly Bookings for Future Travel to Hawai'i as of November 15, 2020**  
Canada



Source: Global Agency Pro, as of November 15, 2020

**Travel Agency Weekly Bookings for Future Travel to Hawai'i as of November 15, 2020**  
Australia



Source: Global Agency Pro, as of November 15, 2020