

# HTA COVID-19 UPDATE

(Issued: 11/19/20 @ 4:30pm)

Reason for Trip by Arrival Airport - Transpacific Screened Passengers as of 11/18/20	Honolulu (HNL)	Kahului (OGG)	Kona (KOA)	Lihue (LIH)	Grand Total
Airline Crew	333	123	52	64	572
Connecting Flight (Transit)	196	14	0	0	210
Corporate Meeting	5	3	0	1	9
Essential Worker	76	19	20	5	120
Honeymoon	9	4	2	5	20
Incentive Trip	0	2	1	0	3
Intended Resident	97	19	23	11	150
Military or Federal Government	104	1	0	0	105
Other	70	12	11	11	104
Other Business	81	24	24	10	139
Pleasure/Vacation	1,613	1,567	577	770	4,527
Returning Resident	862	167	109	54	1,192
Sports Event	2	0	0	0	2
To Attend School	1	1	1	0	3
To Get Married	2	1	0	0	3
Transit	73	8	0	0	81
Visiting Friends or Relatives	1,068	244	186	141	1,639
<b>Grand Total</b>	<b>4,592</b>	<b>2,209</b>	<b>1,006</b>	<b>1,072</b>	<b>8,879</b>

Source: Safe Travels program developed by the State of Hawaii Office of Enterprise Technology Services

Note: The data is preliminary and subject to change

Market Impact Update: <https://www.dropbox.com/11/19/20 HTA COVID19 Update>

## Novel Coronavirus in Hawaii

### COVID-19 Positive Cases

Cumulative totals as of 12:00pm on November 19, 2020

Total Confirmed Cases	16,841* (107 new)
Hawaii	1,499
Kauai	86
Lanai	106
Maui	463†
Molokai	17
Oahu	14,506
Out of State	164
Pending	0
Required Hospitalization	1,228‡
Hawaii Deaths	223
Cases in the past 14 days	1,527**

### Footnotes for COVID-19 Cases

\*As a result of updated information, one case on Oahu was recategorized to Hawaii, and another was recategorized to out-of-state.

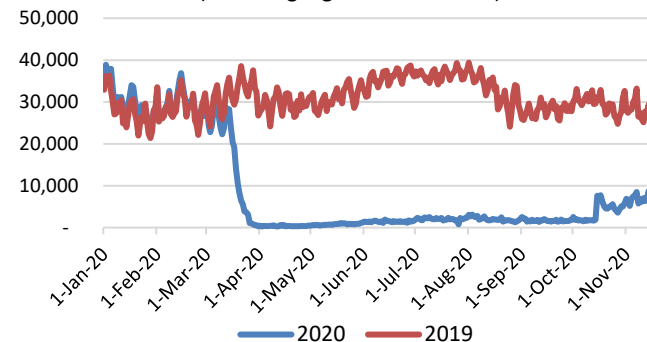
\*\*Using cases reported in the past 14 days provides a rough approximation of the number of cases currently meeting criteria for isolation. This proxy number for "active cases" resolves classification issues for cases unable to be reached or who are out of jurisdiction, for whom precise release from isolation date may not be possible to determine. It is also not influenced by lags in data entry.

†One case is a Lanai resident whose exposure is on Maui Island and who will be remaining on Maui Island for the interim.

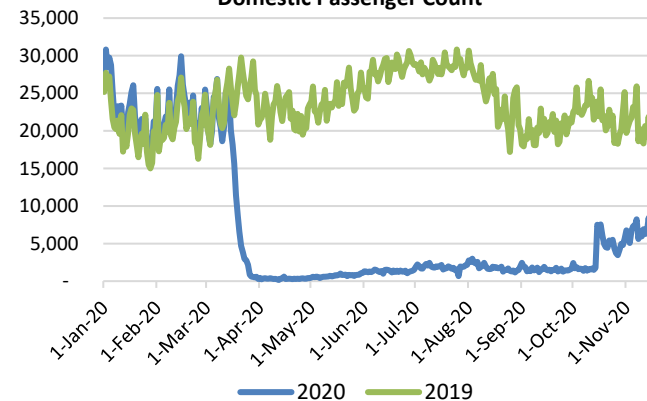
‡Includes Hawaii residents hospitalized out of state.

§Includes cases that meet isolation release criteria (Isolation should be maintained until at least 24 hours after resolution of fever and myalgia without the use of antipyretics OR at least 10 days have passed since symptom onset, whichever is longer). (The cases that have died and one case that has left the jurisdiction have been removed from these counts). Positive cases include confirmed cases, and Hawaii residents and non-residents; data are preliminary and subject to change. Note that CDC provides case counts according to states of residence.

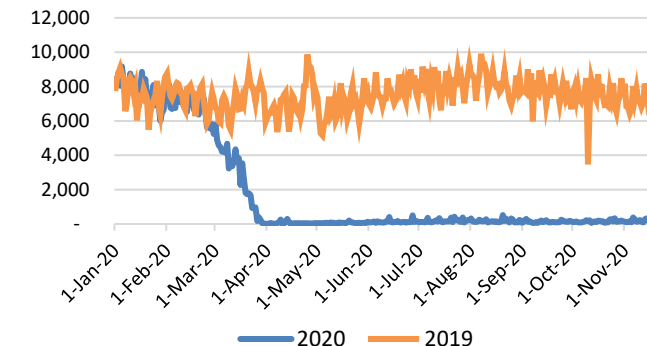
Total Passenger Count  
(excluding flights from Canada)



Domestic Passenger Count



International Passenger Count  
(excluding flights from Canada)



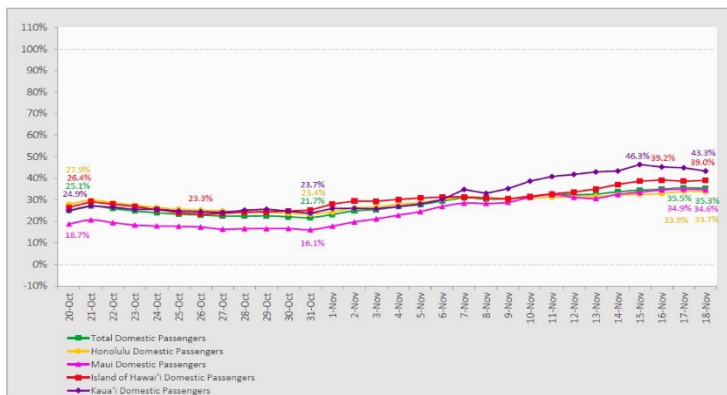
### Daily Passenger Count Table

11/18/2020	Domestic	International	Total
Oahu	4073	130	4203
Maui	2073		2073
Island of Hawaii	910		910
Kauai	758		758
State	7814	130	7944

## 7-Day Domestic by Island Moving Average Daily Passenger Volume

2020 Volume as Percentage of 2019 Volume

Through November 18, 2020



Source: HVCB analysis based on data from DBEDT  
Note: Passenger volume figures include both visitors and residents.

## Domestic by Island Month-to-Date and Year-to-Date Daily Passenger Volume

2020 Volume versus 2019 Volume

Through November 18, 2020

November 2020 (Month-to-Date through November 18)

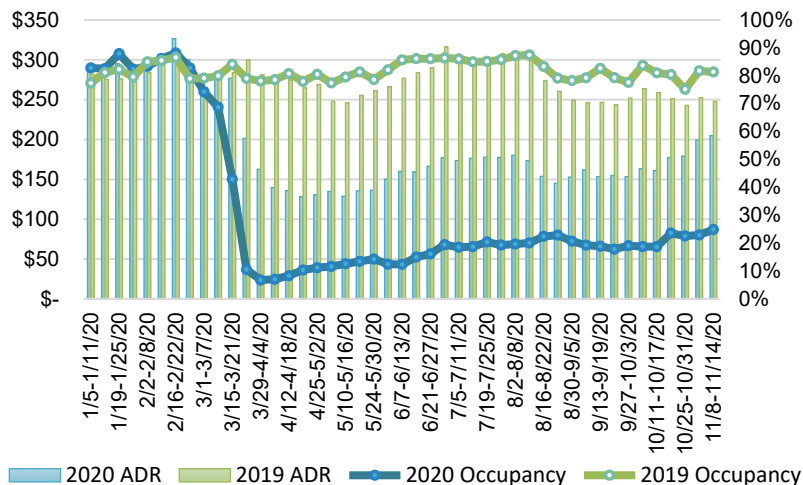
	2020	2019	Volume Change	Percent Change
Honolulu	67,101	211,221	-144,120	-68.2%
Maui County	29,941	96,273	-66,332	-68.9%
Island of Hawai'i	13,100	37,946	-24,846	-65.5%
Kaua'i	12,393	33,214	-20,821	-62.7%
<b>Total</b>	<b>122,534</b>	<b>378,654</b>	<b>-256,120</b>	<b>-67.6%</b>

2020 (Year-to-Date through November 18)

	2020	2019	Volume Change	Percent Change
Honolulu	1,305,321	4,065,545	-2,760,224	-67.9%
Maui County	507,010	1,971,991	-1,464,981	-74.3%
Island of Hawai'i	253,490	859,654	-606,164	-70.5%
Kaua'i	172,858	673,836	-500,978	-74.3%
<b>Total</b>	<b>2,238,678</b>	<b>7,571,026</b>	<b>-5,332,349</b>	<b>-70.4%</b>

Source: HVCB analysis based on data from DBEDT  
Note: Passenger volume figures include both visitors and residents. Total includes other international passengers. 2020 includes one additional day due to Leap Year (February 29th, 2020).

## State of Hawai'i Hotel Performance by Week - 2020 vs 2019



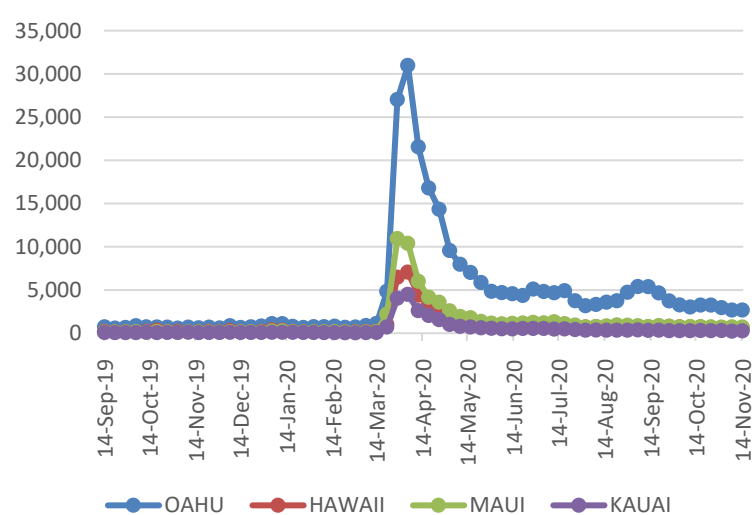
Source: STR, Inc. © Copyright 2020 Hawai'i Tourism Authority

## Hawaii Hotel Performance Info:

For the week of November 8 – November 14, 2020

	Occupancy	ADR	RevPAR
<b>State of Hawaii</b>	24.9%	\$ 204.80	\$ 50.93
<b>Oahu</b>	24.0%	\$ 162.07	\$ 38.83
<b>Maui County</b>	21.2%	\$ 304.32	\$ 64.38
<b>Kauai County</b>	31.3%	\$ 208.83	\$ 65.31
<b>Island of Hawaii</b>	34.4%	\$ 191.24	\$ 65.82

## 2020 Initial Weekly Unemployment Claims by Island



## Weekly Unemployment Initial Claims: November 14, 2020

<b>State of Hawaii</b>	4,343
<b>C&amp;C of Oahu</b>	2,669
<b>Hawaii County</b>	599
<b>Maui County</b>	713
<b>Kauai County</b>	259
<b>Agent</b> (filed in Hawaii against another state)	103

## News Highlights

November 19, 2020

**Hawaii News Now:** [More than 1 month after tourism relaunch, mayors say traveler testing program is flawed](#)

**KHON2:** [Nearly \\$1-million in federal aid to go to Pacific Islander communities](#)

**KITV4:** [2 travelers contract COVID-19 on Kauai after initially testing negative via the Safe Travels Program](#)

**KITV4:** [Maui County could be dealing with another cluster of COVID-19 cases](#)

**The Maui News:** [Stay distanced to avoid a mask at beach, county says](#)

**The Maui News:** [Hawaii Tourism authority accepting hotel safety plans](#)

**The Garden Island:** [County still waiting on Ige's answers to Safe Travels rules](#)

**KCAL9:** [1,000 Clear, Plastic Counter Barriers, UV Lights, COVID-19 Tests For Purchase Greet Holiday Travelers At LAX](#)

**Lonely Planet:** [Help out in Hawaii and get a free hotel stay](#)

## Helpful Resources

Department of Health

<https://hawaii.covid19.com/>

## Department of Health

<https://health.hawaii.gov/docd/advisories/novel-coronavirus-2019>

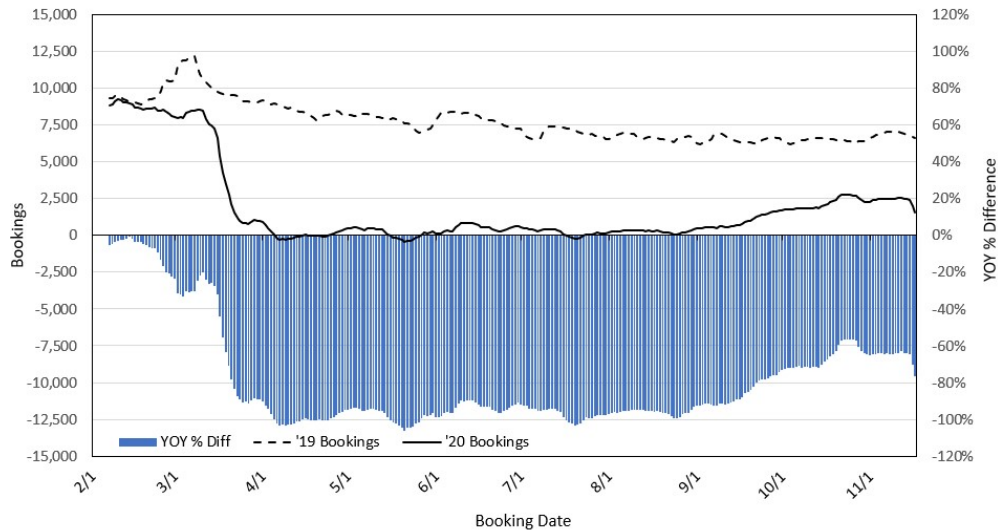
## Dept. of Business, Economic Development & Tourism

<https://dbedt.hawaii.gov/economic/covid19/>

## Department of Transportation

<https://hidot.hawaii.gov/coronavirus/>

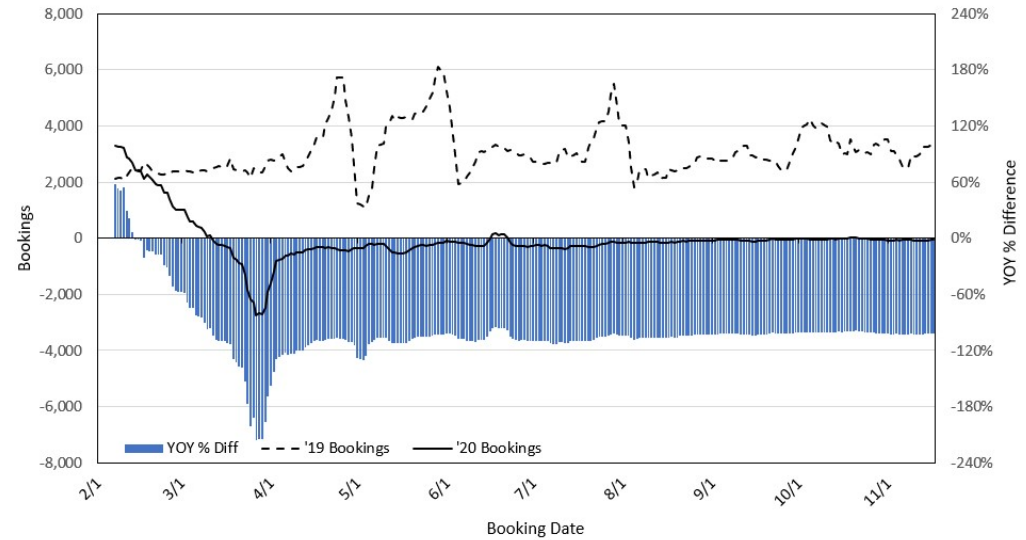
### Travel Agency Bookings to Hawaii for Future Arrivals\* Based on a 7-day Moving Average, 2020 vs 2019 U.S.



\*Future Arrivals refers to all arrivals that are 'future' relative to the referenced booking date.  
Source: Global Agency Pro

Update: Nov 17, 2020

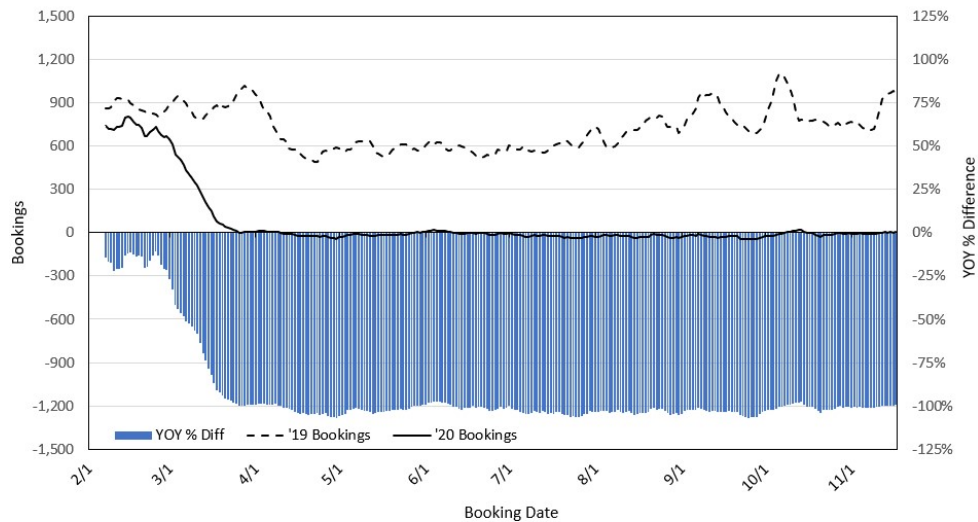
### Travel Agency Bookings to Hawaii for Future Arrivals\* Based on a 7-day Moving Average, 2020 vs 2019 Japan



\*Future Arrivals refers to all arrivals that are 'future' relative to the referenced booking date.  
Source: Global Agency Pro

Update: Nov 17, 2020

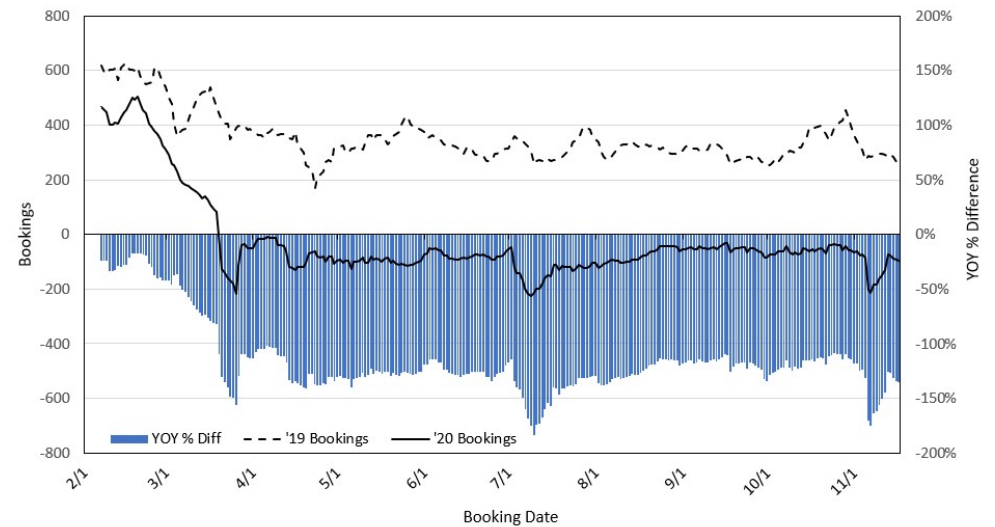
### Travel Agency Bookings to Hawaii for Future Arrivals\* Based on a 7-day Moving Average, 2020 vs 2019 Canada



\*Future Arrivals refers to all arrivals that are 'future' relative to the referenced booking date.  
Source: Global Agency Pro

Update: Nov 17, 2020

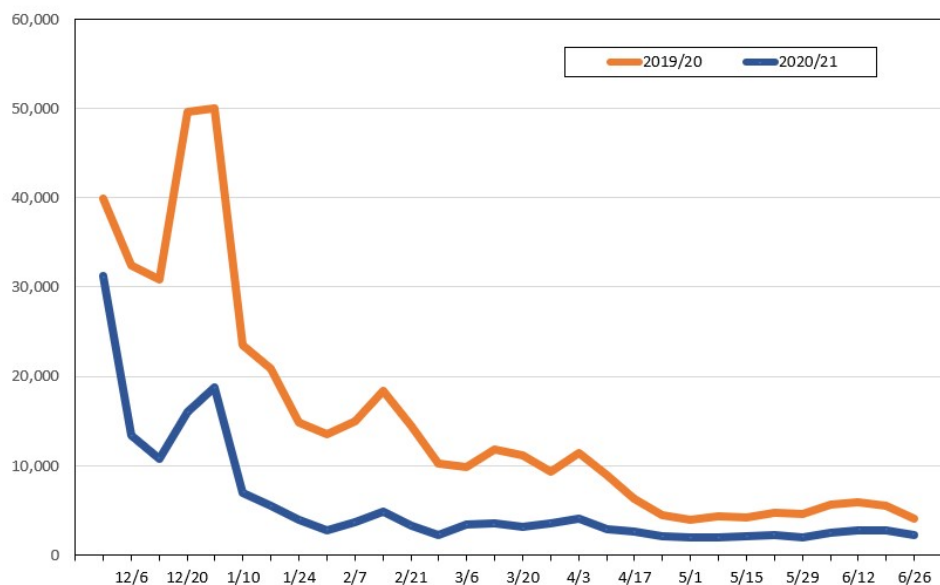
### Travel Agency Bookings to Hawaii for Future Arrivals\* Based on a 7-day Moving Average, 2020 vs 2019 Australia



\*Future Arrivals refers to all arrivals that are 'future' relative to the referenced booking date.  
Source: Global Agency Pro

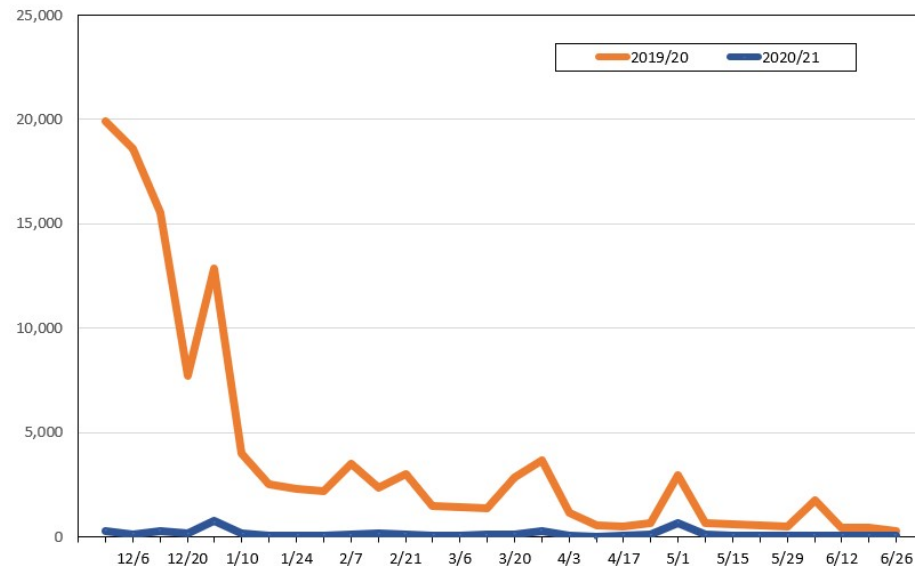
Update: Nov 17, 2020

**Travel Agency Weekly Bookings for Future Travel to Hawai'i as of November 17, 2020**  
U.S.



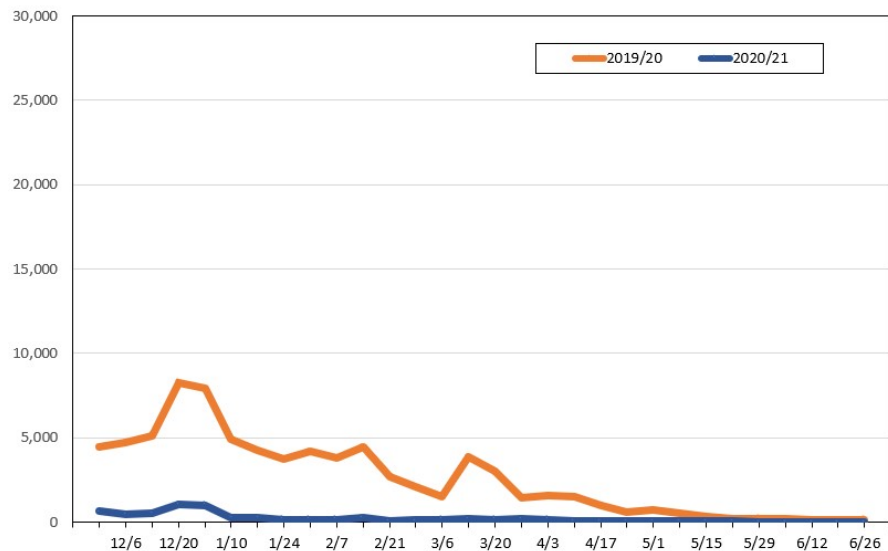
Source: Global Agency Pro, as of November 17, 2020

**Travel Agency Weekly Bookings for Future Travel to Hawai'i as of November 17, 2020**  
Japan



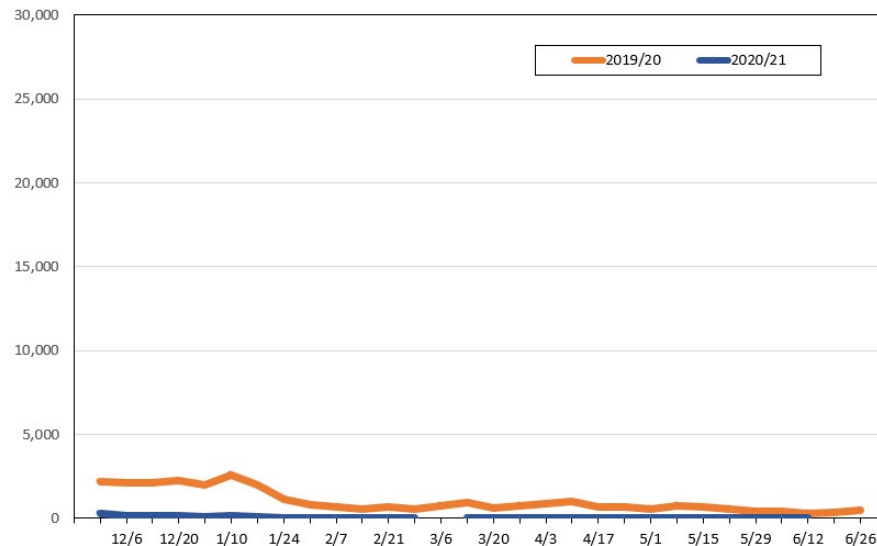
Source: Global Agency Pro, as of November 17, 2020

**Travel Agency Weekly Bookings for Future Travel to Hawai'i as of November 17, 2020**  
Canada



Source: Global Agency Pro, as of November 17, 2020

**Travel Agency Weekly Bookings for Future Travel to Hawai'i as of November 17, 2020**  
Australia



Source: Global Agency Pro, as of November 17, 2020