

HTA COVID-19 UPDATE

(Issued: 11/24/20 @ 4:30pm)

Reason for Trip by Arrival Airport - Transpacific Screened Passengers as of 11/23/20	Honolulu (HNL)	Kahului (OGG)	Kona (KOA)	Lihue (LIH)	Grand Total
Airline Crew	386	156	80	60	682
Connecting Flight (Transit)	242	3	1	0	246
Corporate Meeting	4	1	0	0	5
Essential Worker	49	20	9	3	81
Honeymoon	8	8	5	2	23
Incentive Trip	2	5	0	0	7
Intended Resident	94	17	25	13	149
Military or Federal Government	41	2	0	0	43
Other	78	19	9	8	114
Other Business	35	24	15	6	80
Pleasure/Vacation	1,787	2,062	655	795	5,299
Returning Resident	1,344	182	127	77	1,730
Sports Event	3	0	0	0	3
To Attend School	4	0	2	0	6
To Get Married	3	0	1	0	4
Transit	10	8	0	0	18
Visiting Friends or Relatives	1,402	271	230	122	2,025
Grand Total	5,492	2,778	1,159	1,086	10,515

Source: Safe Travels program developed by the State of Hawaii Office of Enterprise Technology Services

Note: The data is preliminary and subject to change

Market Impact Update: <https://www.dropbox.com/11/24/20 HTA COVID19 Update>

Novel Coronavirus in Hawaii

COVID-19 Positive Cases

Cumulative totals as of 12:00pm on November 24, 2020

Total Confirmed Cases	17,393* (61 new)
Hawaii	1,557
Kauai	101
Lanai	106
Maui	499†
Molokai	17
Oahu	14,918
Out of State	195
Pending	0
Required Hospitalization	1,268‡
Hawaii Deaths	233
Cases in the past 14 days	1,313**

Footnotes for COVID-19 Cases

*As a result of updated information, one case on The Big Island was removed from the counts.

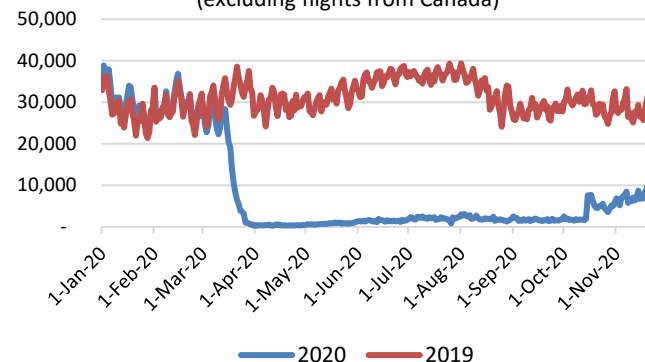
**Using cases reported in the past 14 days provides a rough approximation of the number of cases currently meeting criteria for isolation. This proxy number for "active cases" resolves classification issues for cases unable to be reached or who are out of jurisdiction, for whom precise release from isolation date may not be possible to determine. It is also not influenced by lags in data entry. (This total does not include Hawaii residents diagnosed outside of Hawaii)

†One case is a Lanai resident whose exposure is on Maui Island and who will be remaining on Maui Island for the interim.

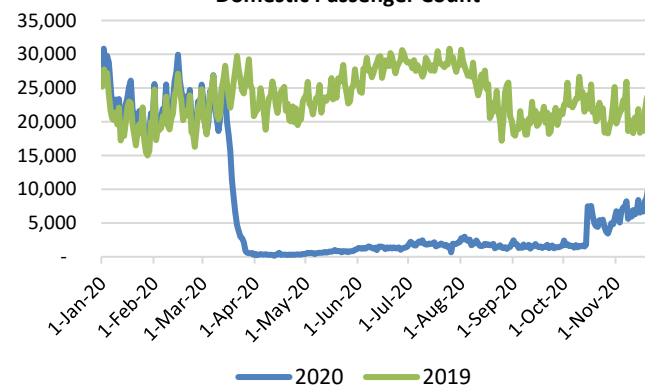
‡Includes Hawaii residents hospitalized out of state.

§Includes cases that meet isolation release criteria (Isolation should be maintained until at least 24 hours after resolution of fever and myalgia without the use of antipyretics OR at least 10 days have passed since symptom onset, whichever is longer). (The cases that have died and one case that has left the jurisdiction have been removed from these counts). Positive cases include confirmed cases, and Hawaii residents and non-residents; data are preliminary and subject to change. Note that CDC provides case counts according to states of residence.

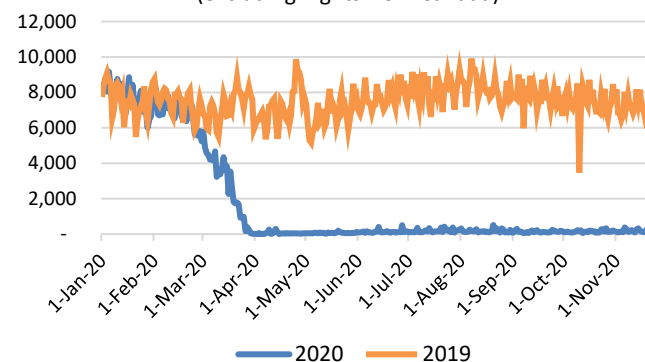
Total Passenger Count
(excluding flights from Canada)



Domestic Passenger Count



International Passenger Count
(excluding flights from Canada)

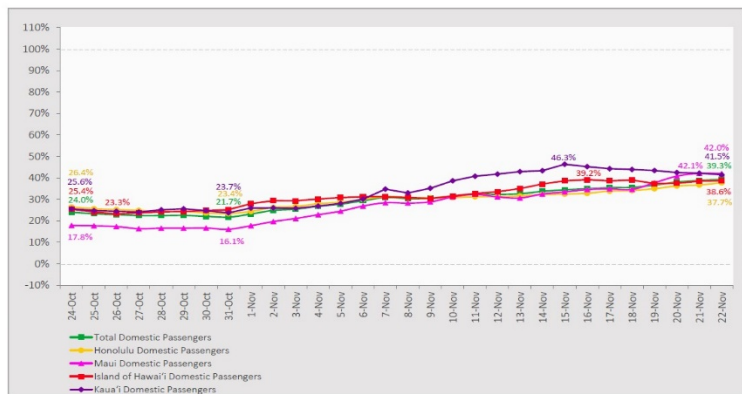


Daily Passenger Count Table

11/23/2020	Domestic	International	Total
Oahu	5183	274	5457
Maui	1859		1859
Island of Hawaii	1005		1005
Kauai	975		975
State	9022	274	9296

7-Day Domestic by Island Moving Average Daily Passenger Volume

2020 Volume as Percentage of 2019 Volume
Through November 22, 2020



Source: HVCB analysis based on data from DBEDT
Note: Passenger volume figures include both visitors and residents.

Domestic by Island Month-to-Date and Year-to-Date Daily Passenger Volume

2020 Volume versus 2019 Volume
Through November 22, 2020

November 2020 (Month-to-Date through November 22)

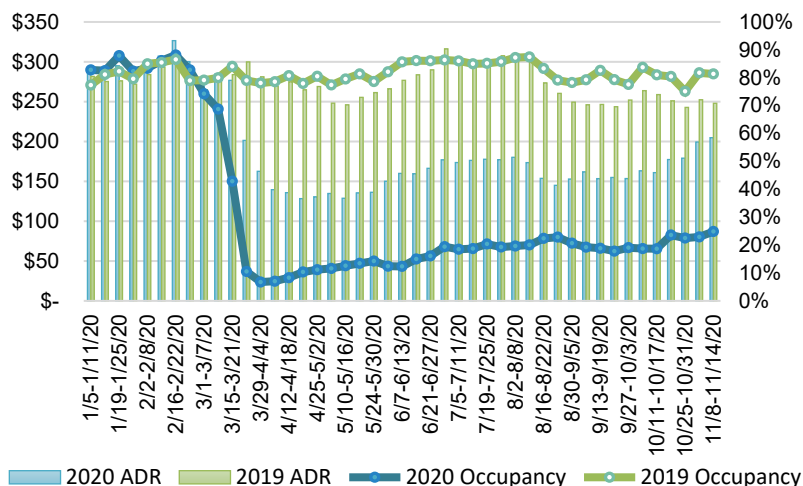
	2020	2019	Volume Change	Percent Change
Honolulu	87,645	259,333	-171,688	-66.2%
Maui County	41,926	118,250	-76,324	-64.5%
Island of Hawai'i	17,684	47,583	-29,899	-62.8%
Kaua'i	16,810	41,421	-24,611	-59.4%
Total	164,065	466,587	-302,522	-64.8%

2020 (Year-to-Date through November 22)

	2020	2019	Volume Change	Percent Change
Honolulu	1,325,865	4,113,657	-2,787,792	-67.8%
Maui County	518,995	1,993,968	-1,474,973	-74.0%
Island of Hawai'i	258,074	869,291	-611,217	-70.3%
Kaua'i	177,275	682,043	-504,768	-74.0%
Total	2,280,208	7,658,959	-5,378,751	-70.2%

Source: HVCB analysis based on data from DBEDT
Note: Passenger volume figures include both visitors and residents. Total includes other international passengers. 2020 includes one additional day due to Leap Year (February 29th, 2020).

State of Hawai'i Hotel Performance by Week - 2020 vs 2019



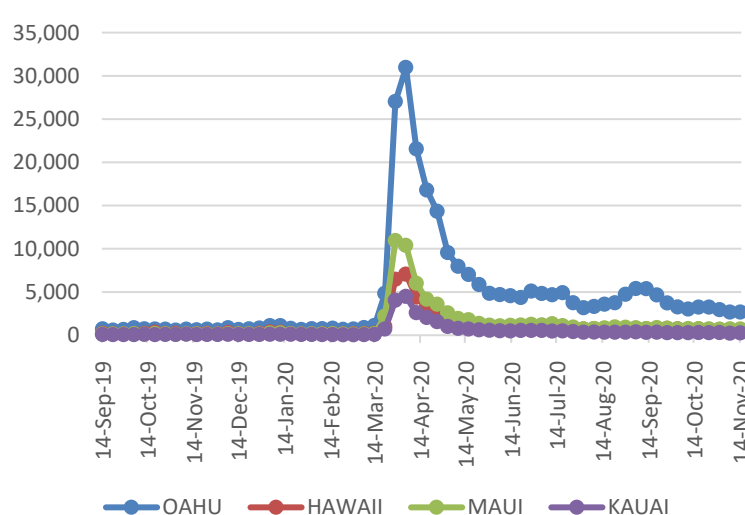
Source: STR, Inc. © Copyright 2020 Hawai'i Tourism Authority

Hawaii Hotel Performance Info:

For the week of November 8 – November 14, 2020

	Occupancy	ADR	RevPAR
State of Hawaii	24.9%	\$ 204.80	\$ 50.93
Oahu	24.0%	\$ 162.07	\$ 38.83
Maui County	21.2%	\$ 304.32	\$ 64.38
Kauai County	31.3%	\$ 208.83	\$ 65.31
Island of Hawaii	34.4%	\$ 191.24	\$ 65.82

2020 Initial Weekly Unemployment Claims by Island



Weekly Unemployment Initial Claims: November 14, 2020

State of Hawaii	4,343
C&C of Oahu	2,669
Hawaii County	599
Maui County	713
Kauai County	259
Agent (filed in Hawaii against another state)	103

News Highlights

November 24, 2020

Hawaii News Now: [More than 58,000 citations issued for violating emergency orders have been thrown out](#)

KHON2: [Mayor Caldwell says HPD COVID Enforcement Team might not return](#)

Honolulu Civil Beat: [House Speaker: Changing Hawaii's Pre-Travel Testing Program 'Doesn't Serve The Public'](#)

The Garden Island: [Kauai records first on-island COVID-19 death](#)

West Hawaii Today: [Officials worried new state restrictions will slow tourism](#)

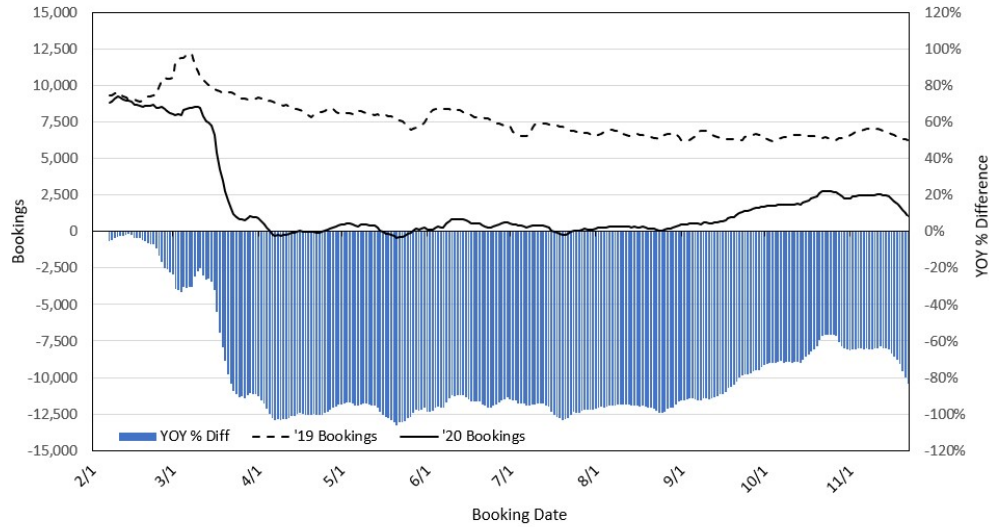
Forbes: [There's Been A Big Change To Hawaii's Pre-Arrival Testing Program](#)

San Diego Union Tribune: [Thinking of traveling to Hawaii during the pandemic? Don't. You're putting native Hawaiians at risk](#)

Travel Pulse: [Some International Travelers May Be Required To Get COVID-19 Vaccine Before Flying](#)

Travel Pulse: [IATA Announces Creation of Digital COVID-19 Travel Pass](#)

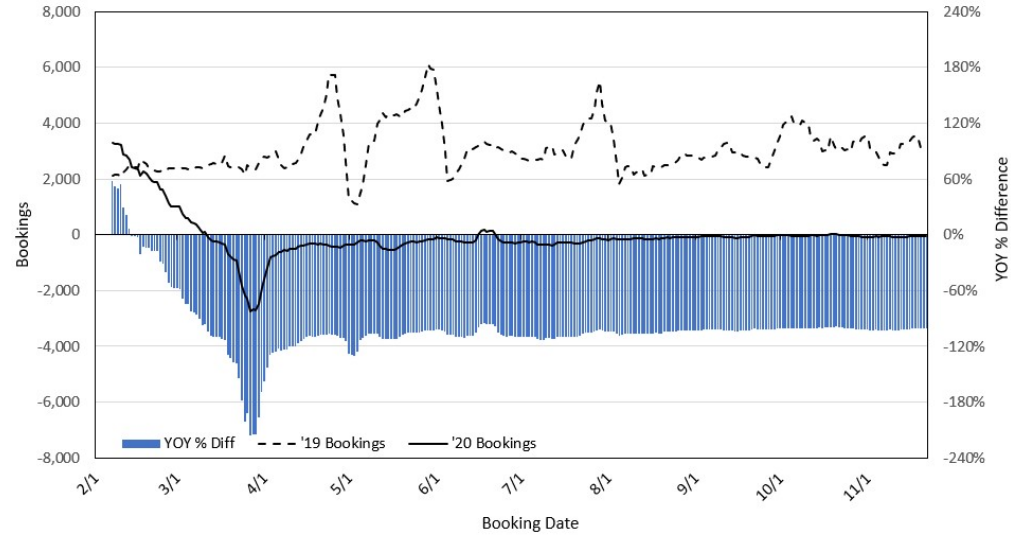
Travel Agency Bookings to Hawaii for Future Arrivals* Based on a 7-day Moving Average, 2020 vs 2019 U.S.



*Future Arrivals refers to all arrivals that are 'future' relative to the referenced booking date.
Source: Global Agency Pro

Update: Nov 22, 2020

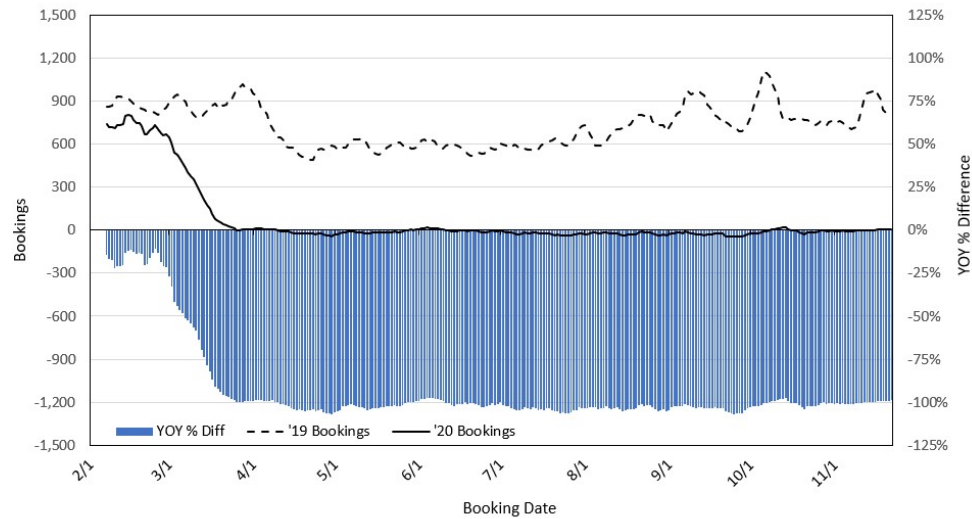
Travel Agency Bookings to Hawaii for Future Arrivals* Based on a 7-day Moving Average, 2020 vs 2019 Japan



*Future Arrivals refers to all arrivals that are 'future' relative to the referenced booking date.
Source: Global Agency Pro

Update: Nov 22, 2020

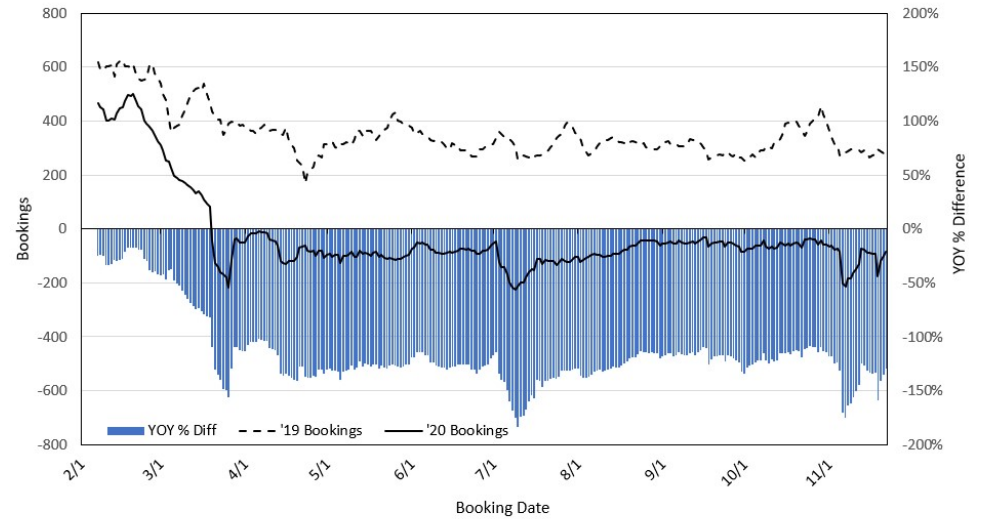
Travel Agency Bookings to Hawaii for Future Arrivals* Based on a 7-day Moving Average, 2020 vs 2019 Canada



*Future Arrivals refers to all arrivals that are 'future' relative to the referenced booking date.
Source: Global Agency Pro

Update: Nov 22, 2020

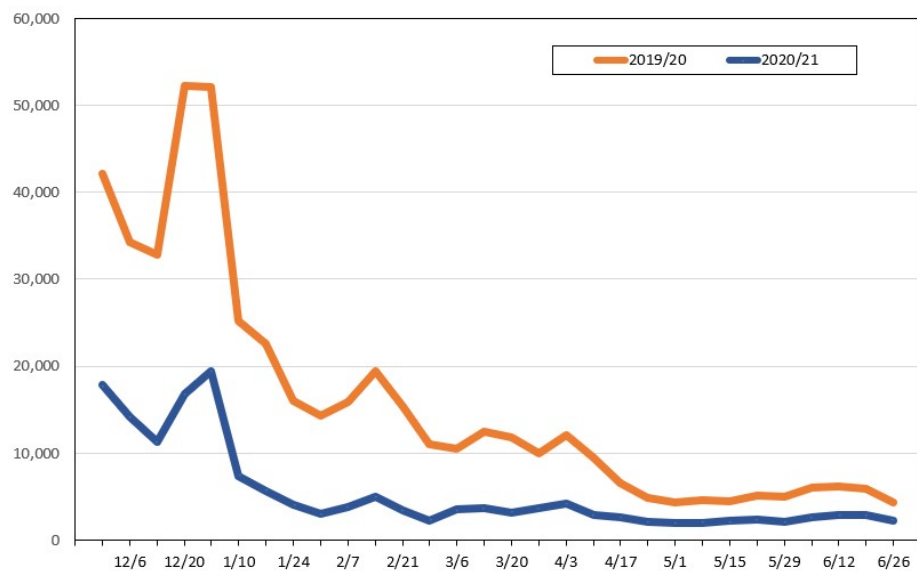
Travel Agency Bookings to Hawaii for Future Arrivals* Based on a 7-day Moving Average, 2020 vs 2019 Australia



*Future Arrivals refers to all arrivals that are 'future' relative to the referenced booking date.
Source: Global Agency Pro

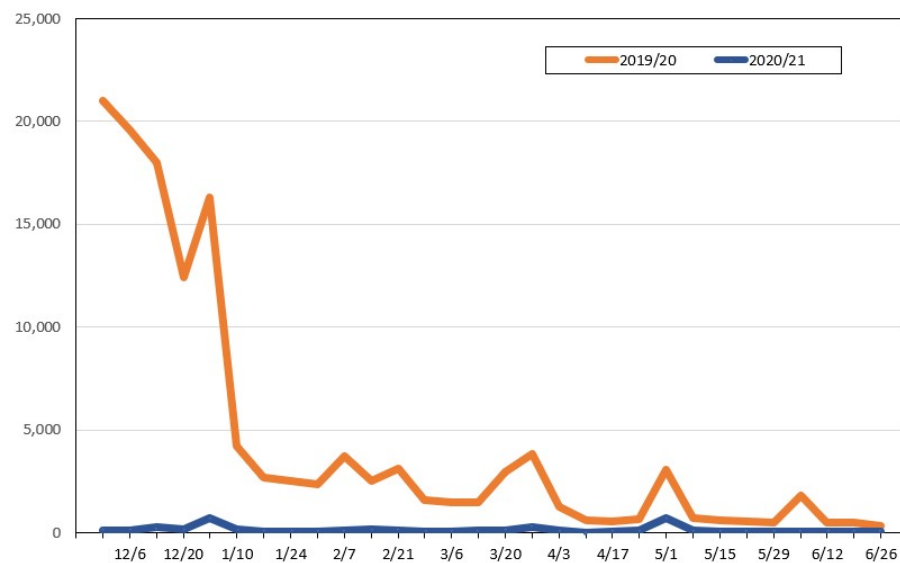
Update: Nov 22, 2020

Travel Agency Weekly Bookings for Future Travel to Hawai'i as of November 22, 2020
U.S.



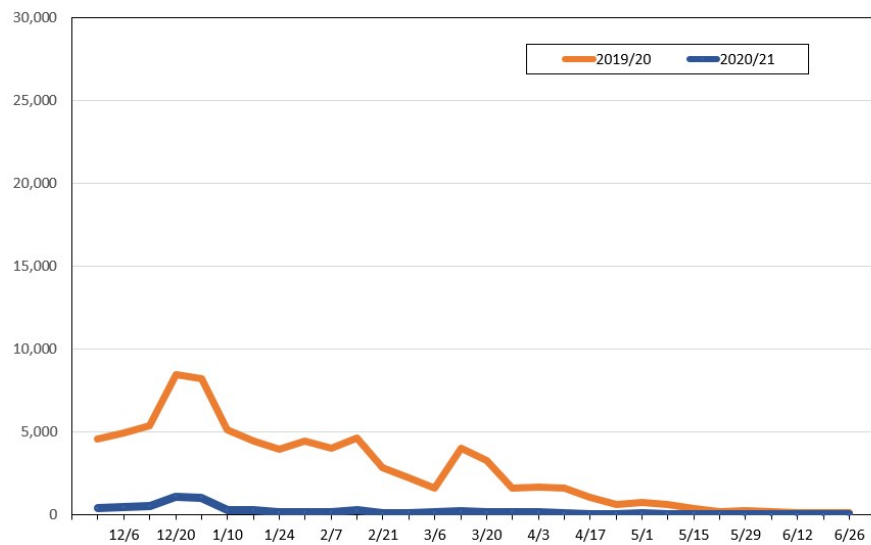
Source: Global Agency Pro, as of November 22, 2020

Travel Agency Weekly Bookings for Future Travel to Hawai'i as of November 22, 2020
Japan



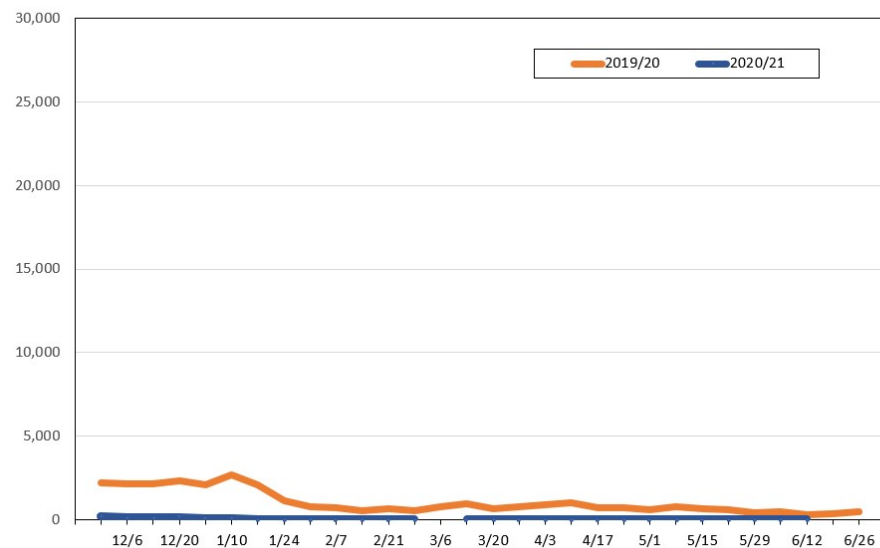
Source: Global Agency Pro, as of November 22, 2020

Travel Agency Weekly Bookings for Future Travel to Hawai'i as of November 22, 2020
Canada



Source: Global Agency Pro, as of November 22, 2020

Travel Agency Weekly Bookings for Future Travel to Hawai'i as of November 22, 2020
Australia



Source: Global Agency Pro, as of November 22, 2020