

HTA COVID-19 UPDATE

(Issued: 11/25/20 @ 4:30pm)

Reason for Trip by Arrival Airport - Transpacific Screened Passengers as of 11/24/20	Honolulu (HNL)	Kahului (OGG)	Kona (KOA)	Lihue (LIH)	Grand Total
Airline Crew	367	144	74	61	646
Connecting Flight (Transit)	200	8	0	0	208
Corporate Meeting	1	0	0	0	1
Essential Worker	56	16	15	1	88
Honeymoon	10	6	2	3	21
Incentive Trip	2	2	1	1	6
Intended Resident	49	12	27	10	98
Military or Federal Government	55	0	0	0	55
Other	18	9	7	3	37
Other Business	26	9	8	3	46
Pleasure/Vacation	1,074	1,291	510	498	3,373
Returning Resident	937	126	133	39	1,235
Sports Event	0	2	0	0	2
To Attend School	1	0	0	0	1
To Get Married	0	0	0	4	4
Transit	35	0	0	0	35
Visiting Friends or Relatives	1,076	188	189	71	1,524
Grand Total	3,907	1,813	966	694	7,380

Source: Safe Travels program developed by the State of Hawaii Office of Enterprise Technology Services

Note: The data is preliminary and subject to change

Market Impact Update: <https://www.dropbox.com/11/25/20 HTA COVID19 Update>

Novel Coronavirus in Hawaii

COVID-19 Positive Cases

Cumulative totals as of 12:00pm on November 25, 2020

Total Confirmed Cases	17,501* (108 new)
Hawaii	1,558
Kauai	102
Lanai	106
Maui	504†
Molokai	17
Oahu	15,011
Out of State	203
Pending	0
Required Hospitalization	1,269‡
Hawaii Deaths	235
Cases in the past 14 days	1,340**

Footnotes for COVID-19 Cases

*As a result of updated information, one case on The Big Island was recategorized to out-of-state and one out-of-state case was recategorized to Maui

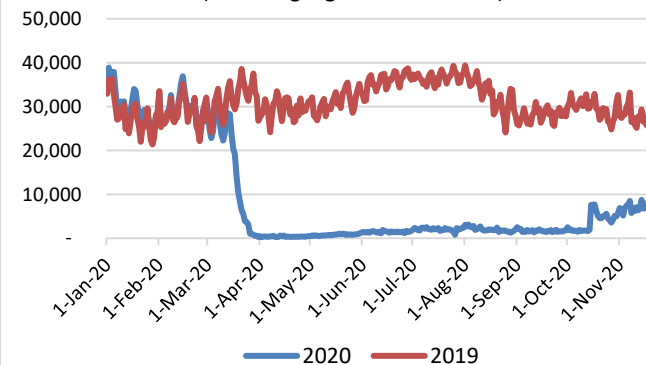
**Using cases reported in the past 14 days provides a rough approximation of the number of cases currently meeting criteria for isolation. This proxy number for "active cases" resolves classification issues for cases unable to be reached or who are out of jurisdiction, for whom precise release from isolation date may not be possible to determine. It is also not influenced by lags in data entry. (This total does not include Hawaii residents diagnosed outside of Hawaii)

†One case is a Lanai resident whose exposure is on Maui Island and who will be remaining on Maui Island for the interim.

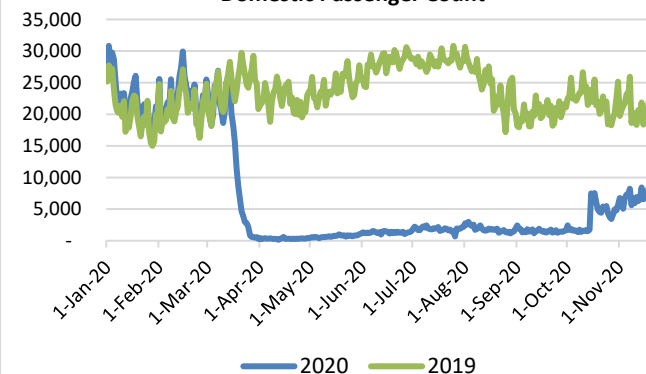
‡Includes Hawaii residents hospitalized out of state.

§Includes cases that meet isolation release criteria (Isolation should be maintained until at least 24 hours after resolution of fever and myalgia without the use of antipyretics OR at least 10 days have passed since symptom onset, whichever is longer). (The cases that have died and one case that has left the jurisdiction have been removed from these counts). Positive cases include confirmed cases, and Hawaii residents and non-residents; data are preliminary and subject to change. Note that CDC provides case counts according to states of residence.

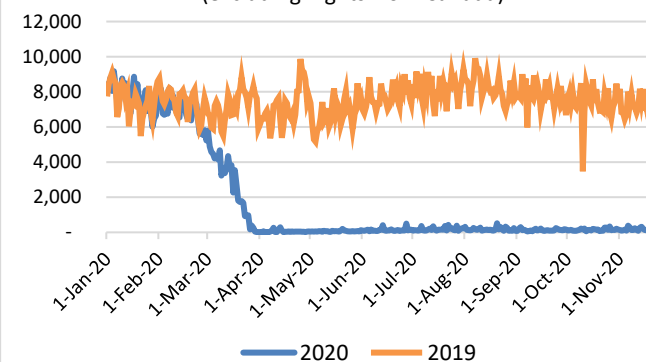
Total Passenger Count
(excluding flights from Canada)



Domestic Passenger Count



International Passenger Count
(excluding flights from Canada)



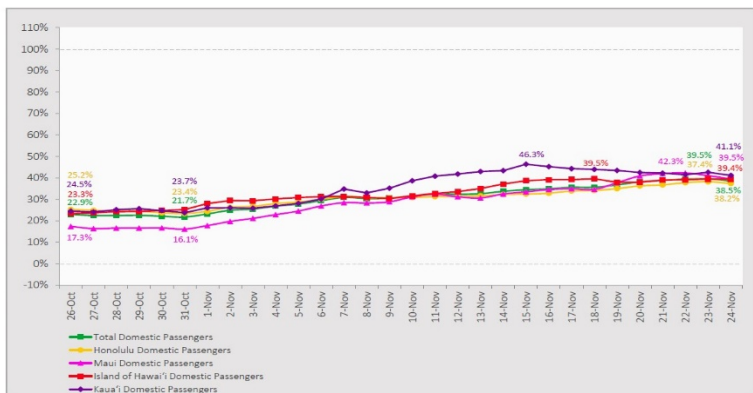
Daily Passenger Count Table

11/24/2020	Domestic	International	Total
Oahu	3463	140	3603
Maui	1586		1586
Island of Hawaii	813		813
Kauai	601		601
State	6463	140	6603

7-Day Domestic by Island Moving Average Daily Passenger Volume

2020 Volume as Percentage of 2019 Volume

Through November 24, 2020



Source: HVCB analysis based on data from DBEDT
Note: Passenger volume figures include both visitors and residents.

Domestic by Island Month-to-Date and Year-to-Date Daily Passenger Volume

2020 Volume versus 2019 Volume

Through November 24, 2020

November 2020 (Month-to-Date through November 24)

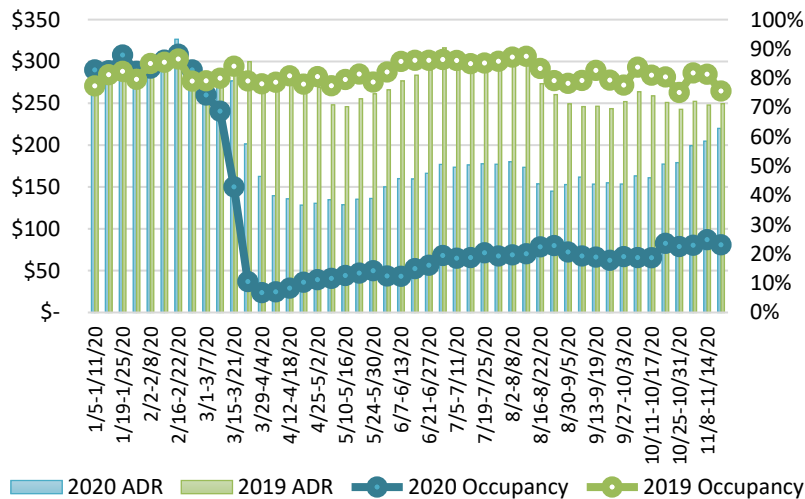
	2020	2019	Volume Change	Percent Change
Honolulu	96,291	285,899	-189,608	-66.3%
Maui County	45,491	133,486	-87,995	-65.9%
Island of Hawai'i	19,579	53,422	-33,843	-63.4%
Kaua'i	18,386	47,106	-28,720	-61.0%
Total	179,747	519,913	-340,166	-65.4%

2020 (Year-to-Date through November 24)

	2020	2019	Volume Change	Percent Change
Honolulu	1,334,511	4,140,223	-2,805,712	-67.8%
Maui County	522,560	2,009,204	-1,486,644	-74.0%
Island of Hawai'i	259,969	875,130	-615,161	-70.3%
Kaua'i	178,851	687,728	-508,877	-74.0%
Total	2,295,891	7,712,285	-5,416,395	-70.2%

Source: HVCB analysis based on data from DBEDT
Note: Passenger volume figures include both visitors and residents. Total includes other international passengers. 2020 includes one additional day due to Leap Year (February 29th, 2020).

State of Hawai'i Hotel Performance by Week - 2020 vs 2019



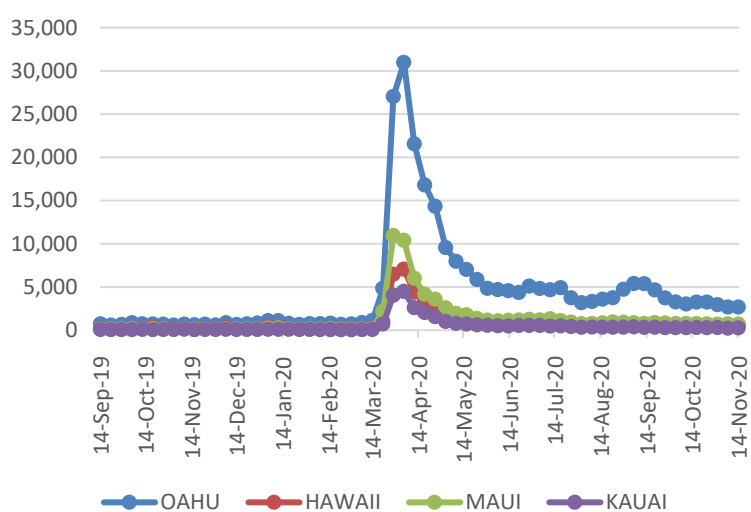
Source: STR, Inc. © Copyright 2020 Hawai'i Tourism Authority

Hawaii Hotel Performance Info:

For the week of November 15 – November 21, 2020

	Occupancy	ADR	RevPAR
State of Hawaii	23.1%	\$ 220.00	\$ 50.77
Oahu	22.9%	\$ 164.59	\$ 37.63
Maui County	20.4%	\$ 345.95	\$ 70.41
Kauai County	29.0%	\$ 212.44	\$ 61.62
Island of Hawaii	25.8%	\$ 216.67	\$ 55.91

2020 Initial Weekly Unemployment Claims by Island



Weekly Unemployment Initial Claims: November 14, 2020

State of Hawaii	4,343
C&C of Oahu	2,669
Hawaii County	599
Maui County	713
Kauai County	259
Agent (filed in Hawaii against another state)	103

News Highlights

November 25, 2020

KITV4: [Tens of thousands of passengers flying to Hawaii daily](#)

Hawaii News Now: [Constantly changing travel testing rules is stressing out some Hawaii air travelers](#)

Honolulu Civil Beat: [People Are Moving To Hawaii To Escape Virus Hotspots. Will They Stay?](#)

The Maui News: [Two COVID testing events set for Kihei](#)

West Hawaii Today: [Hawaii Island COVID-19 case count reaches 1,551](#)

The Garden Island: [2 new COVID-19 cases reported](#)

The Garden Island: [Kawakami requests Safe Travels pause](#)

Hawaii Tribune-Herald: [Keep the mask: A vaccine won't end the US crisis right away](#)

Time: [Hawaii Is Riding Out the COVID-19 Storm. But Geographic Isolation Isn't the Blessing it May Seem](#)

ABC7: [COVID-19 travel restrictions in all 50 states to know before your trip](#)

Helpful Resources

Department of Health
<https://hawaiiocovid19.com/>

Department of Health

<https://health.hawaii.gov/docd/advisories/novel-coronavirus-2019>

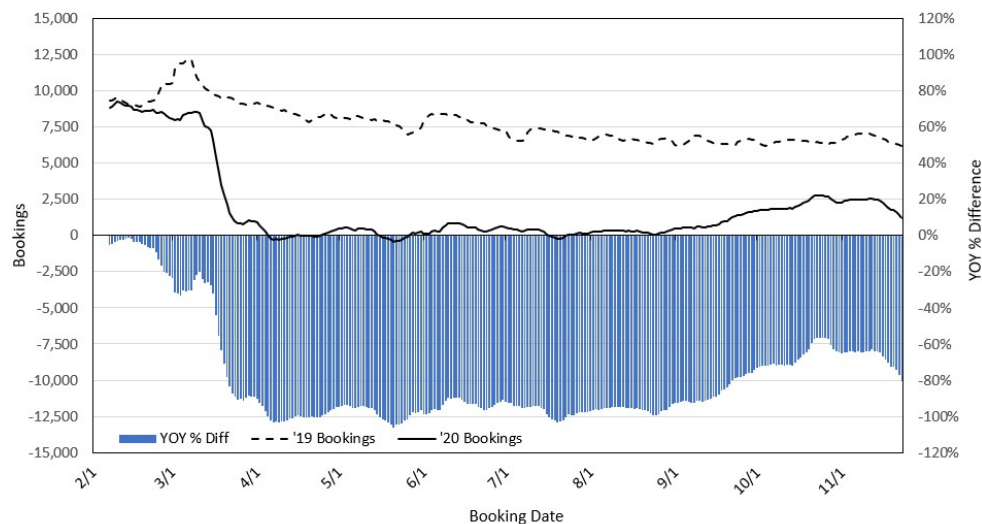
Dept. of Business, Economic Development & Tourism

<https://dbedt.hawaii.gov/economic/covid19/>

Department of Transportation

<https://hidot.hawaii.gov/coronavirus/>

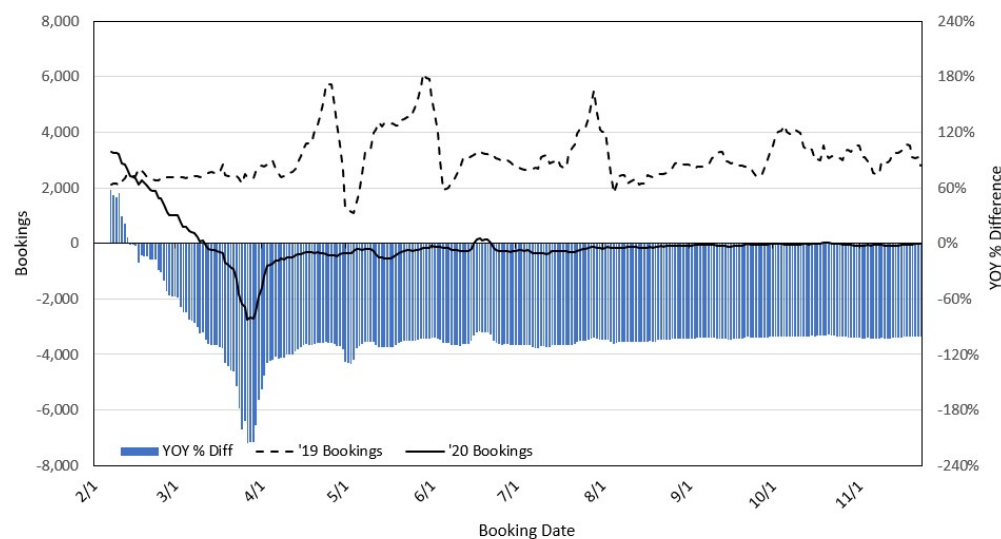
Travel Agency Bookings to Hawaii for Future Arrivals* Based on a 7-day Moving Average, 2020 vs 2019 U.S.



*Future Arrivals refers to all arrivals that are 'future' relative to the referenced booking date.
Source: Global Agency Pro

Update: Nov 23, 2020

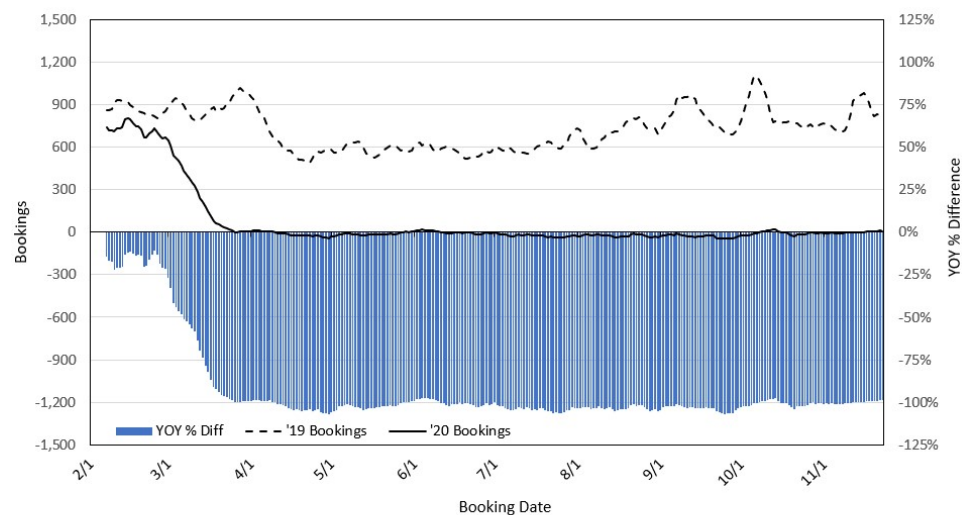
Travel Agency Bookings to Hawaii for Future Arrivals* Based on a 7-day Moving Average, 2020 vs 2019 Japan



*Future Arrivals refers to all arrivals that are 'future' relative to the referenced booking date.
Source: Global Agency Pro

Update: Nov 23, 2020

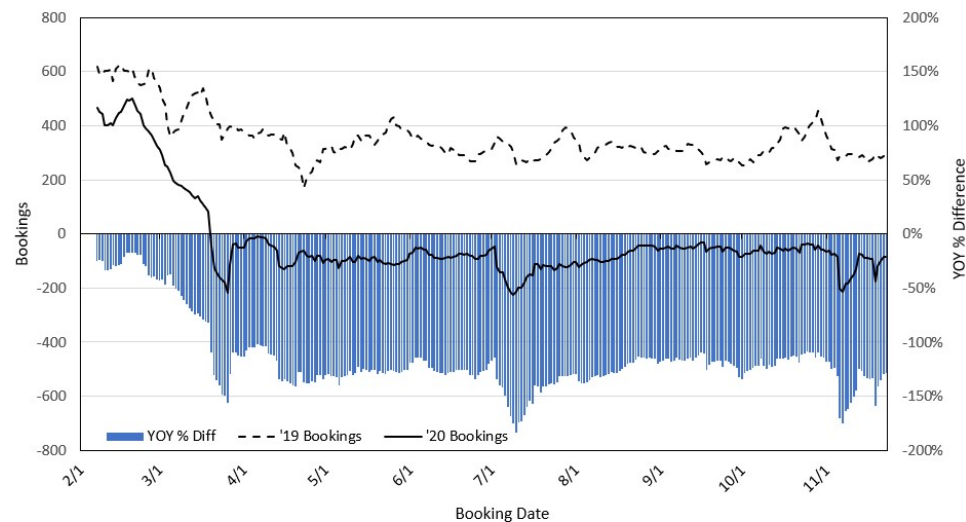
Travel Agency Bookings to Hawaii for Future Arrivals* Based on a 7-day Moving Average, 2020 vs 2019 Canada



*Future Arrivals refers to all arrivals that are 'future' relative to the referenced booking date.
Source: Global Agency Pro

Update: Nov 23, 2020

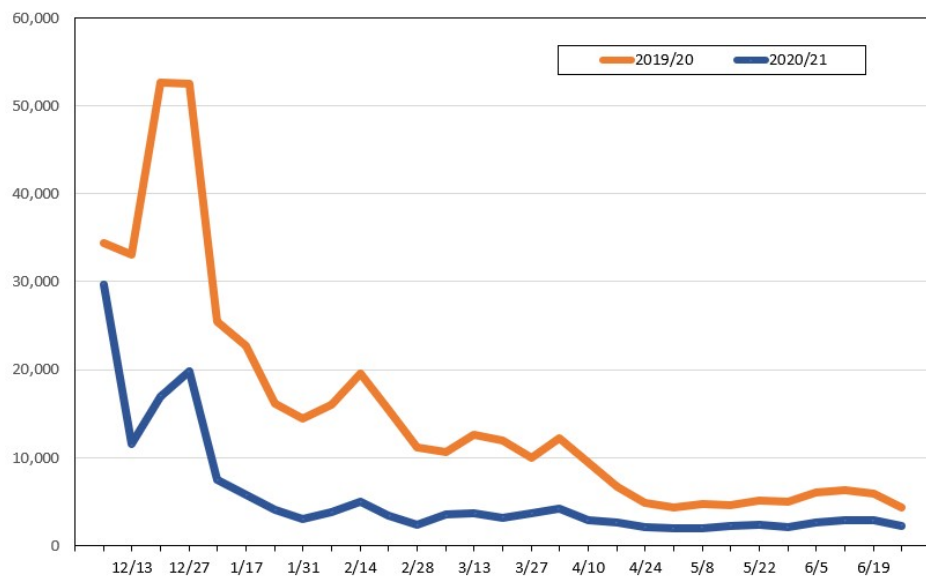
Travel Agency Bookings to Hawaii for Future Arrivals* Based on a 7-day Moving Average, 2020 vs 2019 Australia



*Future Arrivals refers to all arrivals that are 'future' relative to the referenced booking date.
Source: Global Agency Pro

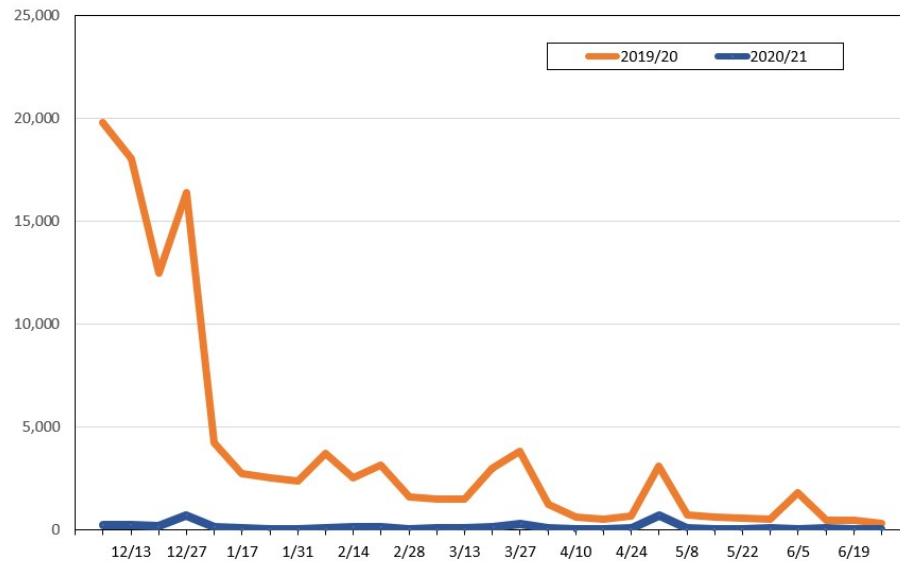
Update: Nov 23, 2020

Travel Agency Weekly Bookings for Future Travel to Hawai'i as of November 23, 2020
U.S.



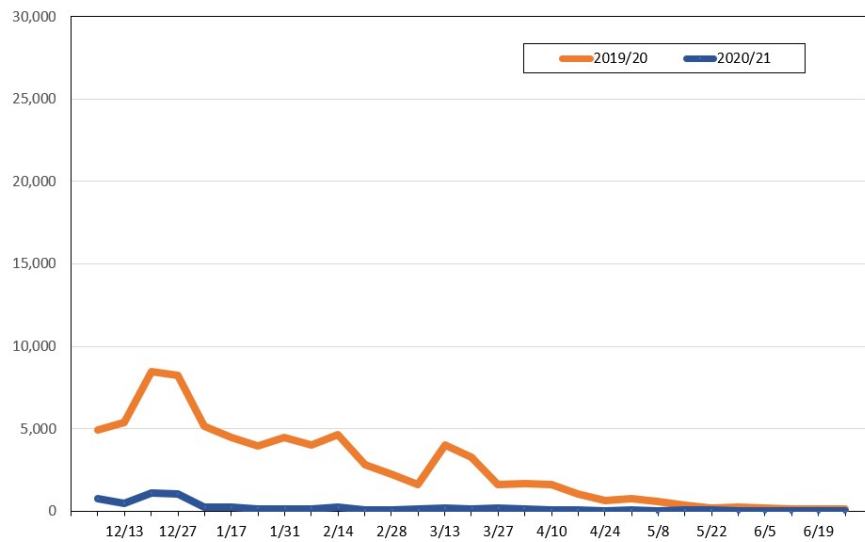
Source: Global Agency Pro, as of November 23, 2020

Travel Agency Weekly Bookings for Future Travel to Hawai'i as of November 23, 2020
Japan



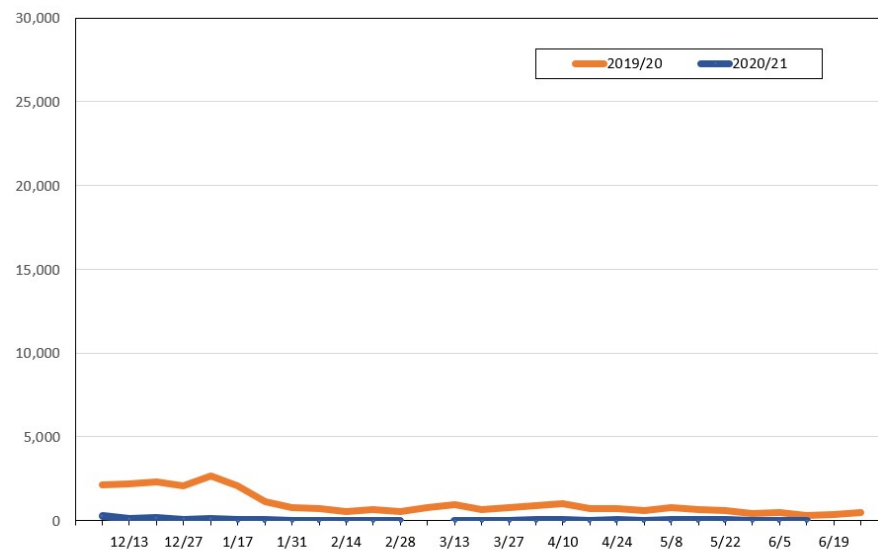
Source: Global Agency Pro, as of November 23, 2020

Travel Agency Weekly Bookings for Future Travel to Hawai'i as of November 23, 2020
Canada



Source: Global Agency Pro, as of November 23, 2020

Travel Agency Weekly Bookings for Future Travel to Hawai'i as of November 23, 2020
Australia



Source: Global Agency Pro, as of November 23, 2020