

# HTA COVID-19 UPDATE

(Issued: 11/27/20 @ 4:30pm)

Reason for Trip by Arrival Airport - Transpacific Screened Passengers as of 11/26/20	Honolulu (HNL)	Kahului (OGG)	Kona (KOA)	Lihue (LIH)	Grand Total
Airline Crew	367	144	62	55	628
Connecting Flight (Transit)	284	7	0	0	291
Corporate Meeting	2	2	0	0	4
Essential Worker	32	13	9	6	60
Honeymoon	9	6	2	2	19
Incentive Trip	6	0	0	0	6
Intended Resident	81	11	12	9	113
Military or Federal Government	47	0	0	0	47
Other	42	16	8	2	68
Other Business	45	16	13	6	80
Pleasure/Vacation	1,691	1,620	537	572	4,420
Returning Resident	736	116	78	22	952
Sports Event	124	0	0	0	124
To Attend School	4	0	0	0	4
To Get Married	7	4	8	4	23
Transit	8	2	0	0	10
Visiting Friends or Relatives	926	178	115	48	1,267
<b>Grand Total</b>	<b>4,411</b>	<b>2,135</b>	<b>844</b>	<b>726</b>	<b>8,116</b>

Source: Safe Travels program developed by the State of Hawaii Office of Enterprise Technology Services

Note: The data is preliminary and subject to change

Market Impact Update: <https://www.dropbox.com/11/25/20 HTA COVID19 Update>

## Novel Coronavirus in Hawaii

### COVID-19 Positive Cases

Cumulative totals as of 12:00pm on November 27, 2020

Total Confirmed Cases	17,708* (92 new)
Hawaii	1,574
Kauai	110
Lanai	106
Maui	521†
Molokai	17
Oahu	15,170
Out of State	210
Pending	0
Required Hospitalization	1,287‡
Hawaii Deaths	240
Cases in the past 14 days	1,332**

### Footnotes for COVID-19 Cases

\*As a result of updated information, one case on The Big Island was recategorized to out-of-state and one out-of-state case was recategorized to Maui

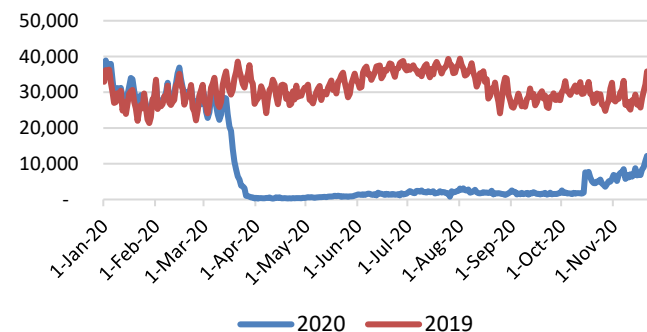
\*\*Using cases reported in the past 14 days provides a rough approximation of the number of cases currently meeting criteria for isolation. This proxy number for "active cases" resolves classification issues for cases unable to be reached or who are out of jurisdiction, for whom precise release from isolation date may not be possible to determine. It is also not influenced by lags in data entry. (This total does not include Hawaii residents diagnosed outside of Hawaii)

†One case is a Lanai resident whose exposure is on Maui Island and who will be remaining on Maui Island for the interim.

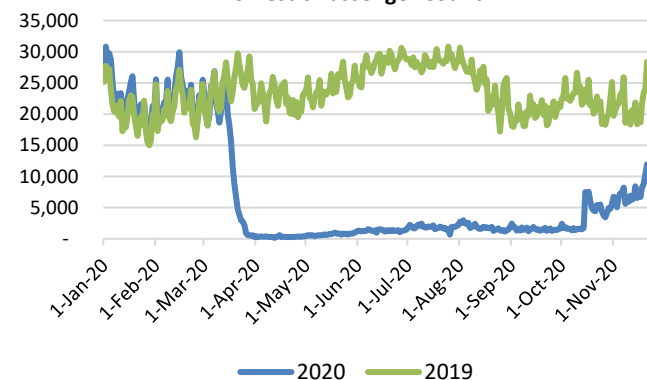
‡Includes Hawaii residents hospitalized out of state.

§Includes cases that meet isolation release criteria (Isolation should be maintained until at least 24 hours after resolution of fever and myalgia without the use of antipyretics OR at least 10 days have passed since symptom onset, whichever is longer). (The cases that have died and one case that has left the jurisdiction have been removed from these counts). Positive cases include confirmed cases, and Hawaii residents and non-residents; data are preliminary and subject to change. Note that CDC provides case counts according to states of residence.

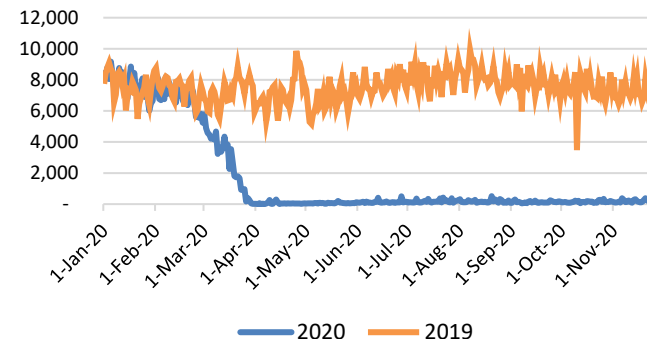
Total Passenger Count  
(excluding flights from Canada)



Domestic Passenger Count



International Passenger Count  
(excluding flights from Canada)



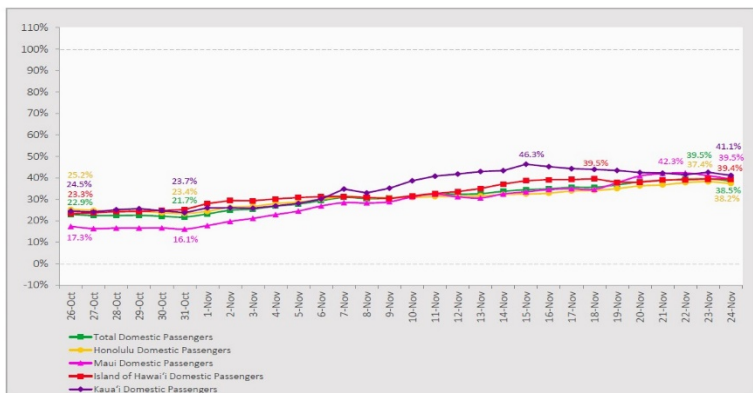
Daily Passenger Count Table

11/26/2020	Domestic	International	Total
Oahu	3439	151	3590
Maui	1891		1891
Island of Hawaii	743		743
Kauai	637		637
State	6710	151	6861

## 7-Day Domestic by Island Moving Average Daily Passenger Volume

2020 Volume as Percentage of 2019 Volume

Through November 24, 2020



Source: HVCB analysis based on data from DBEDT  
Note: Passenger volume figures include both visitors and residents.

## Domestic by Island Month-to-Date and Year-to-Date Daily Passenger Volume

2020 Volume versus 2019 Volume

Through November 24, 2020

November 2020 (Month-to-Date through November 24)

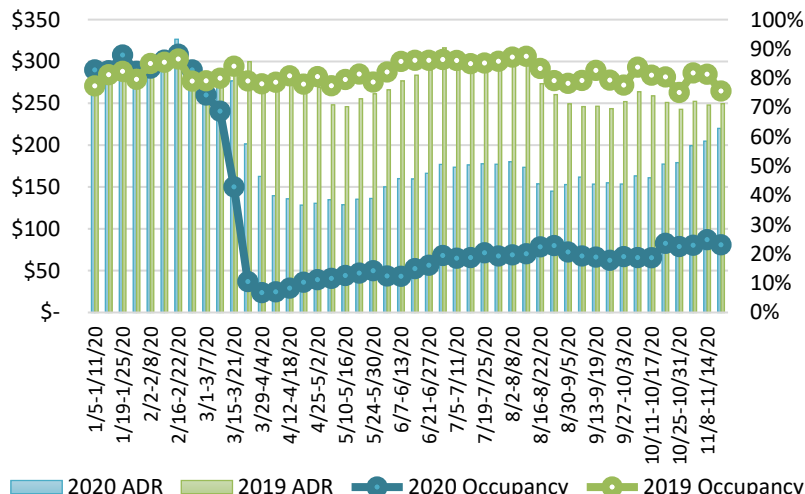
	2020	2019	Volume Change	Percent Change
Honolulu	96,291	285,899	-189,608	-66.3%
Maui County	45,491	133,486	-87,995	-65.9%
Island of Hawai'i	19,579	53,422	-33,843	-63.4%
Kaua'i	18,386	47,106	-28,720	-61.0%
<b>Total</b>	<b>179,747</b>	<b>519,913</b>	<b>-340,166</b>	<b>-65.4%</b>

2020 (Year-to-Date through November 24)

	2020	2019	Volume Change	Percent Change
Honolulu	1,334,511	4,140,223	-2,805,712	-67.8%
Maui County	522,560	2,009,204	-1,486,644	-74.0%
Island of Hawai'i	259,969	875,130	-615,161	-70.3%
Kaua'i	178,851	687,728	-508,877	-74.0%
<b>Total</b>	<b>2,295,891</b>	<b>7,712,285</b>	<b>-5,416,395</b>	<b>-70.2%</b>

Source: HVCB analysis based on data from DBEDT  
Note: Passenger volume figures include both visitors and residents. Total includes other international passengers. 2020 includes one additional day due to Leap Year (February 29th, 2020).

## State of Hawai'i Hotel Performance by Week - 2020 vs 2019



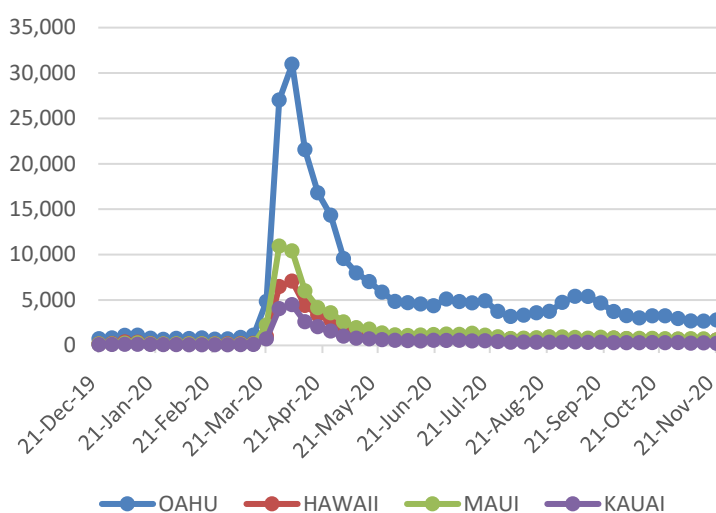
Source: STR, Inc. © Copyright 2020 Hawai'i Tourism Authority

## Hawaii Hotel Performance Info:

For the week of November 15 – November 21, 2020

	Occupancy	ADR	RevPAR
<b>State of Hawaii</b>	23.1%	\$ 220.00	\$ 50.77
<b>Oahu</b>	22.9%	\$ 164.59	\$ 37.63
<b>Maui County</b>	20.4%	\$ 345.95	\$ 70.41
<b>Kauai County</b>	29.0%	\$ 212.44	\$ 61.62
<b>Island of Hawaii</b>	25.8%	\$ 216.67	\$ 55.91

## 2020 Initial Weekly Unemployment Claims by Island



## Weekly Unemployment Initial Claims: November 21, 2020

<b>State of Hawaii</b>	4,258
<b>C&amp;C of Oahu</b>	2,782
<b>Hawaii County</b>	574
<b>Maui County</b>	588
<b>Kauai County</b>	219
<b>Agent</b> (filed in Hawaii against another state)	95

## News Highlights

November 27, 2020

**Hawaii News Now:** [Hawaii reports 92 new COVID-19 infections, 3 additional fatalities](#)

**Hawaii News Now:** [Green: Despite criticism from mayors, pre-travel testing system is working](#)

**Hawaii News Now:** [City to unveil coronavirus-friendly Shaka Santa, Tutu Mele figures next week](#)

**Hawaii News Now:** [Hawaii COVID-19 survivor hospitalized for 88 days: 'Every minute of every day, I was in pain'](#)

**KHON:** [Mayor Caldwell says Oahu will remain in Tier 2 for now](#)

**KHON:** [Hawaii tourism struggles while other destinations thrive](#)

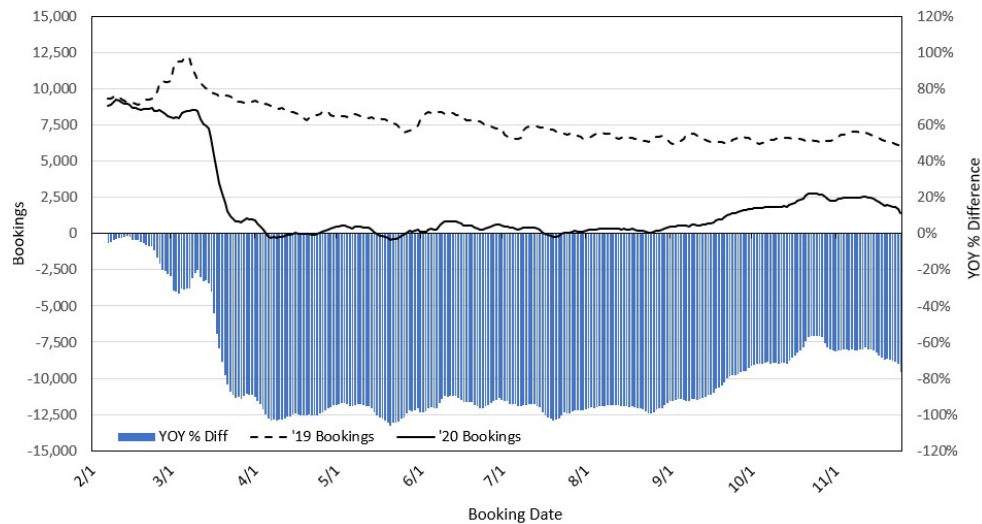
**KITV:** [Kauai reports two additional travel-related COVID-19 cases](#)

**Honolulu Civil Beat:** [Hawaii Releases More Details On COVID-19 Vaccine Plan](#)

**Honolulu Civil Beat:** [People Are Moving To Hawaii To Escape Virus Hotspots. Will They Stay?](#)

**CNN:** [Your phone can send you an alert if you were near someone who has coronavirus](#)

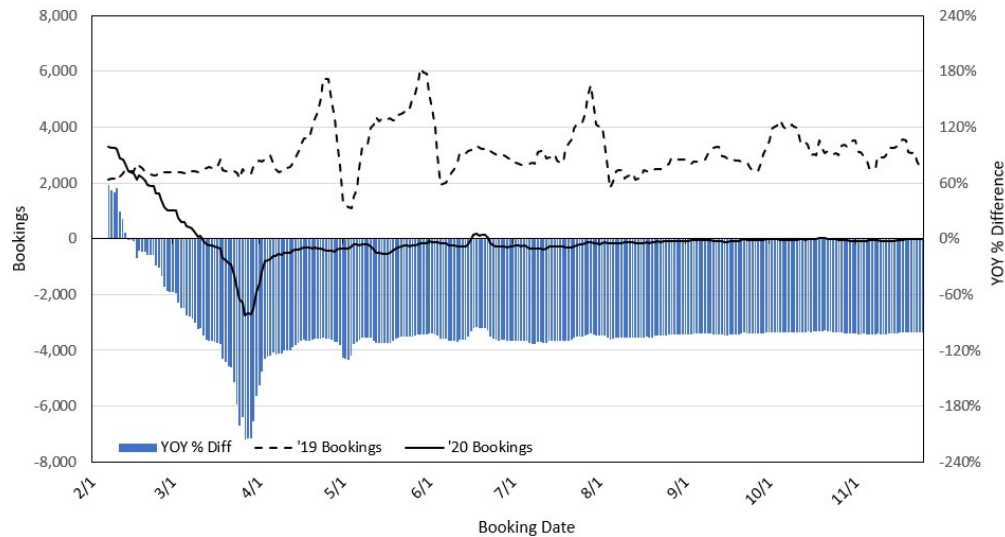
### Travel Agency Bookings to Hawaii for Future Arrivals\* Based on a 7-day Moving Average, 2020 vs 2019 U.S.



\*Future Arrivals refers to all arrivals that are 'future' relative to the referenced booking date.  
Source: Global Agency Pro

Update: Nov 25, 2020

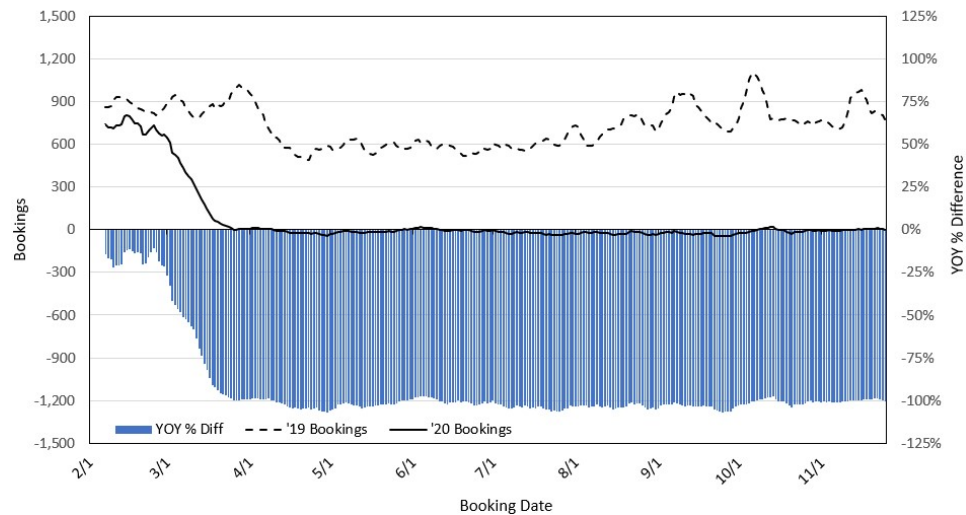
### Travel Agency Bookings to Hawaii for Future Arrivals\* Based on a 7-day Moving Average, 2020 vs 2019 Japan



\*Future Arrivals refers to all arrivals that are 'future' relative to the referenced booking date.  
Source: Global Agency Pro

Update: Nov 25, 2020

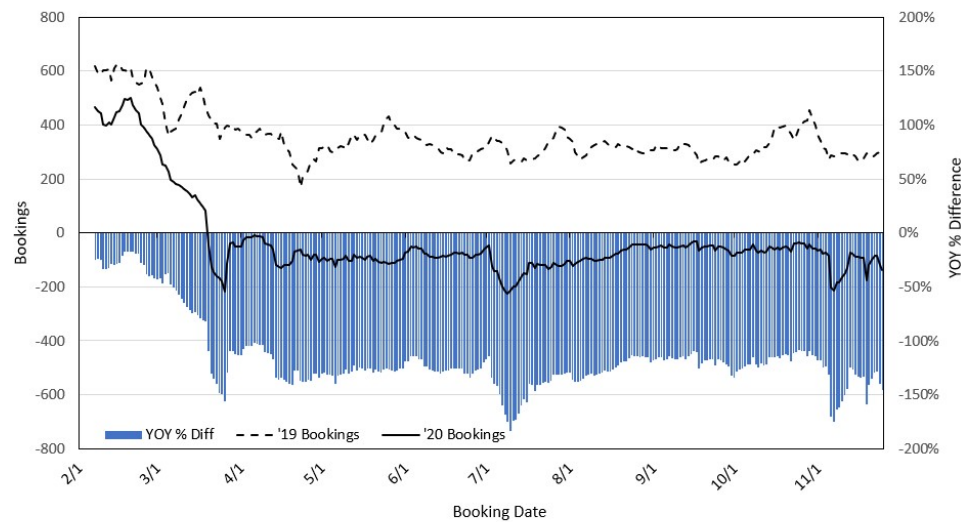
### Travel Agency Bookings to Hawaii for Future Arrivals\* Based on a 7-day Moving Average, 2020 vs 2019 Canada



\*Future Arrivals refers to all arrivals that are 'future' relative to the referenced booking date.  
Source: Global Agency Pro

Update: Nov 25, 2020

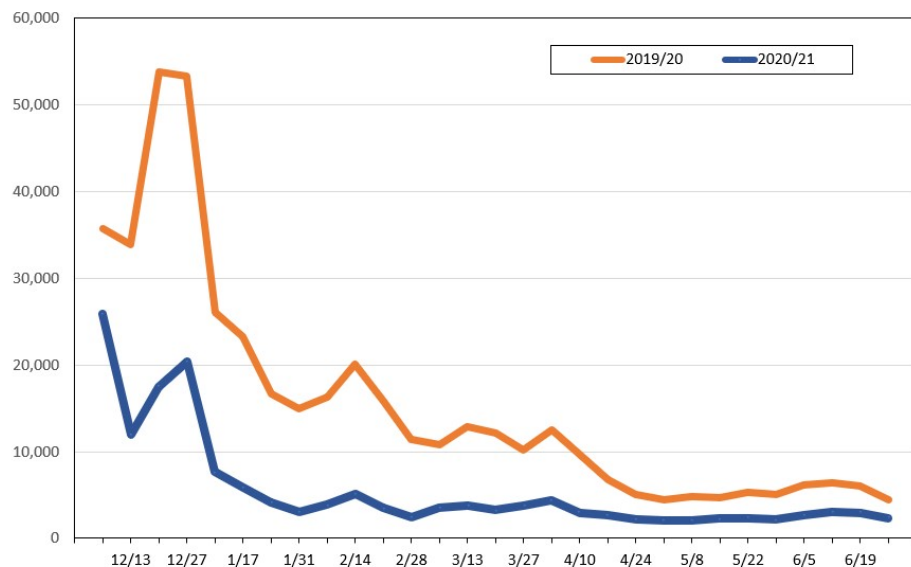
### Travel Agency Bookings to Hawaii for Future Arrivals\* Based on a 7-day Moving Average, 2020 vs 2019 Australia



\*Future Arrivals refers to all arrivals that are 'future' relative to the referenced booking date.  
Source: Global Agency Pro

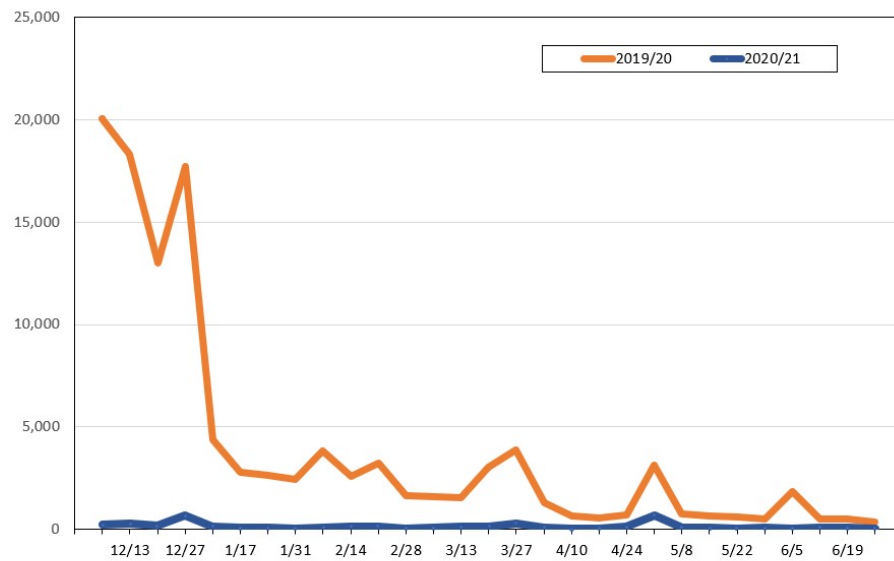
Update: Nov 25, 2020

**Travel Agency Weekly Bookings for Future Travel to Hawai'i as of November 25, 2020**  
**U.S.**



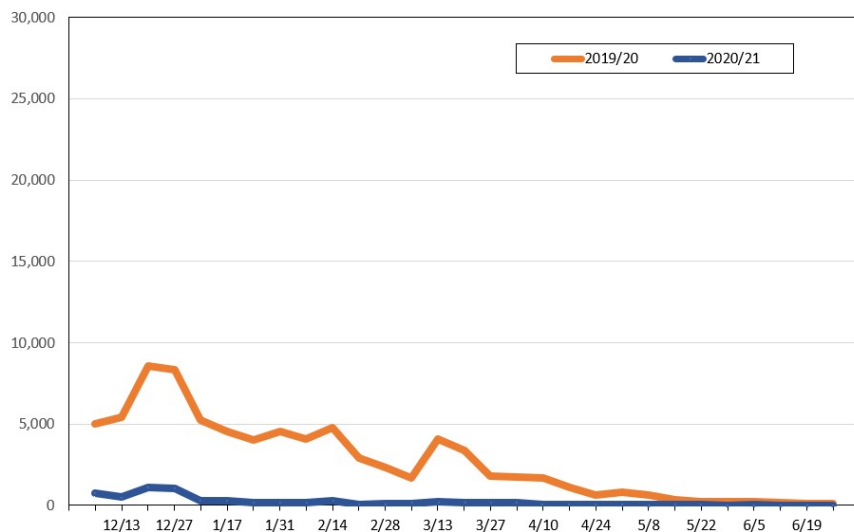
Source: Global Agency Pro, as of November 25, 2020

**Travel Agency Weekly Bookings for Future Travel to Hawai'i as of November 25, 2020**  
**Japan**



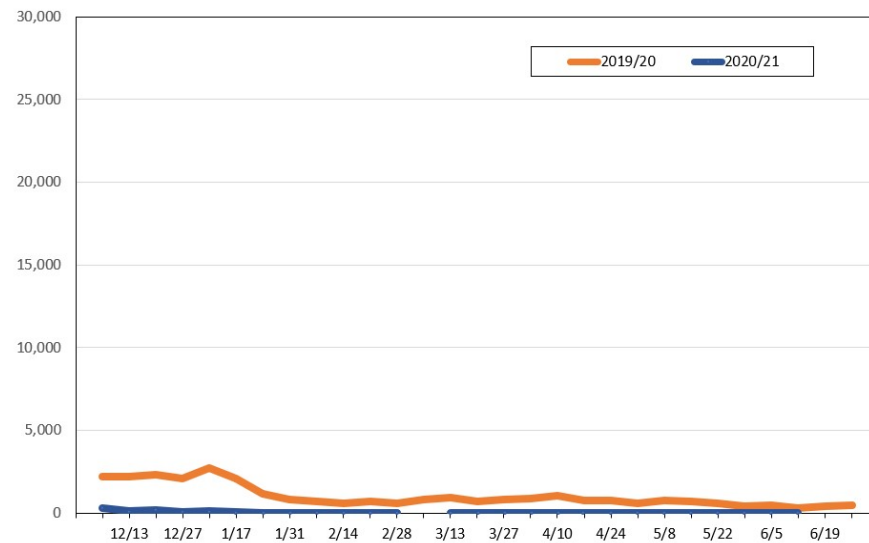
Source: Global Agency Pro, as of November 25, 2020

**Travel Agency Weekly Bookings for Future Travel to Hawai'i as of November 25, 2020**  
**Canada**



Source: Global Agency Pro, as of November 25, 2020

**Travel Agency Weekly Bookings for Future Travel to Hawai'i as of November 25, 2020**  
**Australia**



Source: Global Agency Pro, as of November 25, 2020