

HTA COVID-19 UPDATE

(Issued: 11/30/20 @ 4:30pm)

Reason for Trip by Arrival Airport - Transpacific Screened Passengers as of 11/29/20	Honolulu (HNL)	Kahului (OGG)	Kona (KOA)	Lihue (LIH)	Grand Total
Airline Crew	374	189	77	67	707
Connecting Flight (Transit)	208	1	2	0	211
Corporate Meeting	1	8	2	0	11
Essential Worker	210	30	23	10	273
Honeymoon	19	8	0	0	27
Intended Resident	72	20	8	12	112
Military or Federal Government	163	6	0	5	174
Other	32	4	2	2	40
Other Business	69	30	9	15	123
Pleasure/Vacation	551	972	305	284	2,112
Returning Resident	1,894	208	155	78	2,335
Sports Event	0	13	0	0	13
To Attend School	23	0	1	0	24
To Get Married	1	2	0	0	3
Transit	4	1	0	0	5
Visiting Friends or Relatives	302	77	59	18	456
(blank)	0	0	0	0	0
Grand Total	3,923	1,569	643	491	6,626

Source: Safe Travels program developed by the State of Hawaii Office of Enterprise Technology Services

Note: The data is preliminary and subject to change

Market Impact Update: <https://www.dropbox.com/11/30/20 HTA COVID19 Update>

Novel Coronavirus in Hawaii

COVID-19 Positive Cases

Cumulative totals as of 12:00pm on November 30, 2020

Total Confirmed Cases	17,925* (85 new)
Hawaii	1,599
Kauai	113
Lanai	106
Maui	542†
Molokai	18
Oahu	15,330
Out of State	217
Pending	0
Required Hospitalization	1,290‡
Hawaii Deaths	244
Cases in the past 14 days	1,243**

Footnotes for COVID-19 Cases

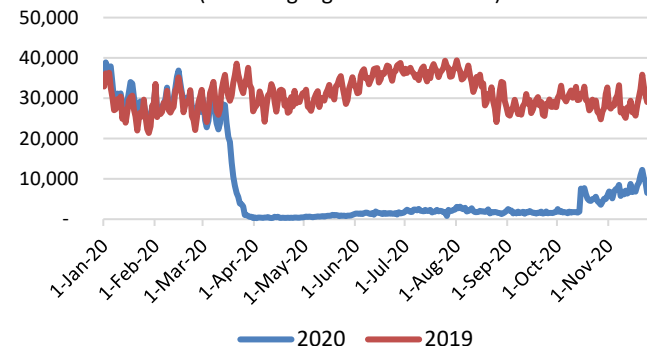
**Using cases reported in the past 14 days provides a rough approximation of the number of cases currently meeting criteria for isolation. This proxy number for "active cases" resolves classification issues for cases unable to be reached or who are out of jurisdiction, for whom precise release from isolation date may not be possible to determine. It is also not influenced by lags in data entry. (This total does not include Hawaii residents diagnosed outside of Hawaii)

†One case is a Lanai resident whose exposure is on Maui Island and who will be remaining on Maui Island for the interim.

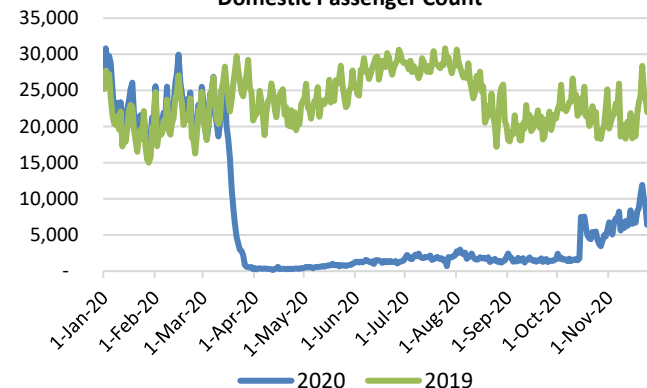
‡Includes Hawaii residents hospitalized out of state.

§Includes cases that meet isolation release criteria (Isolation should be maintained until at least 24 hours after resolution of fever and myalgia without the use of antipyretics OR at least 10 days have passed since symptom onset, whichever is longer). (The cases that have died and one case that has left the jurisdiction have been removed from these counts). Positive cases include confirmed cases, and Hawaii residents and non-residents; data are preliminary and subject to change. Note that CDC provides case counts according to states of residence.

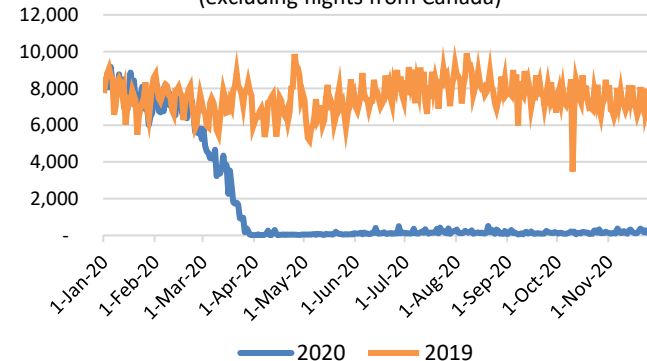
Total Passenger Count
(excluding flights from Canada)



Domestic Passenger Count



International Passenger Count
(excluding flights from Canada)

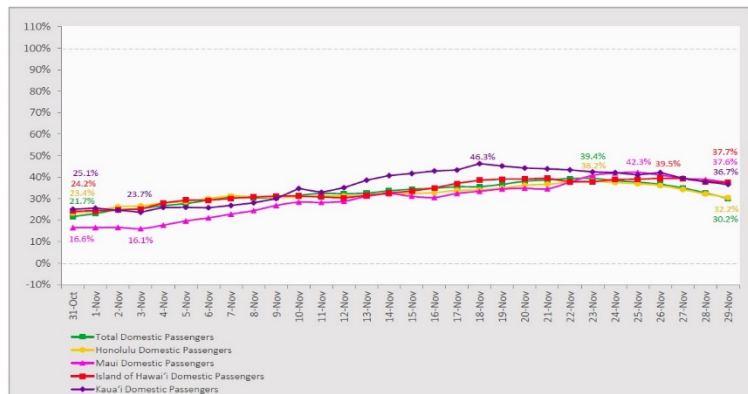


Daily Passenger Count Table

11/29/2020	Domestic	International	Total
Oahu	3476	167	3643
Maui	1310		1310
Island of Hawaii	443		443
Kauai	401		401
State	5630	167	5797

7-Day Domestic by Island Moving Average Daily Passenger Volume

2020 Volume as Percentage of 2019 Volume
Through November 29, 2020



Source: HVCB analysis based on data from DBEDT
Note: Passenger volume figures include both visitors and residents.

Domestic by Island Month-to-Date and Year-to-Date Daily Passenger Volume

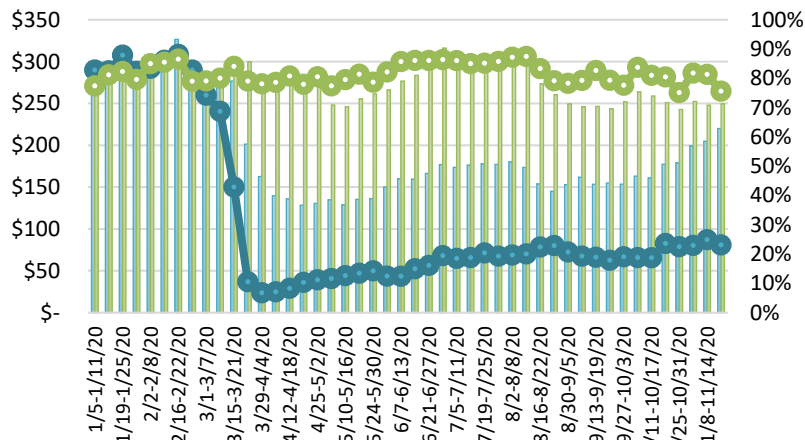
2020 Volume versus 2019 Volume
Through November 29, 2020

November 2020 (Month-to-Date through November 29)				
	2020	2019	Volume Change	Percent Change
Honolulu	113,758	346,589	-232,831	-67.2%
Maui County	54,349	163,224	-108,875	-66.7%
Island of Hawai'i	23,181	66,157	-42,976	-65.0%
Kaua'i	21,058	57,174	-36,116	-63.2%
Total	212,346	633,144	-420,798	-66.5%

2020 (Year-to-Date through November 29)				
	2020	2019	Volume Change	Percent Change
Honolulu	1,351,977	4,200,913	-2,848,936	-67.8%
Maui County	531,418	2,038,942	-1,507,525	-73.9%
Island of Hawai'i	263,571	887,865	-624,294	-70.3%
Kaua'i	181,523	697,796	-516,273	-74.0%
Total	2,328,489	7,825,516	-5,497,027	-70.2%

Source: HVCB analysis based on data from DBEDT
Note: Passenger volume figures include both visitors and residents. Total includes other international passengers. 2020 includes one additional day due to Leap Year (February 29th, 2020).

State of Hawai'i Hotel Performance by Week - 2020 vs 2019



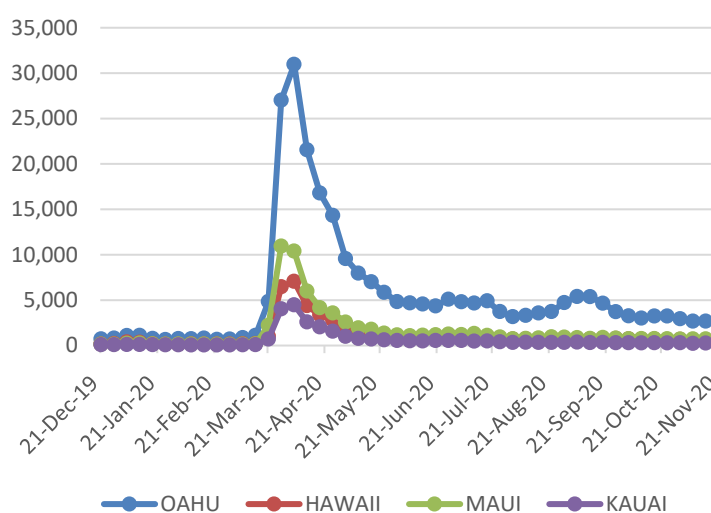
Source: STR, Inc. © Copyright 2020 Hawai'i Tourism Authority

Hawaii Hotel Performance Info:

For the week of November 15 – November 21, 2020

	Occupancy	ADR	RevPAR
State of Hawaii	23.1%	\$ 220.00	\$ 50.77
Oahu	22.9%	\$ 164.59	\$ 37.63
Maui County	20.4%	\$ 345.95	\$ 70.41
Kauai County	29.0%	\$ 212.44	\$ 61.62
Island of Hawaii	25.8%	\$ 216.67	\$ 55.91

2020 Initial Weekly Unemployment Claims by Island



Weekly Unemployment Initial Claims: November 21, 2020

State of Hawaii	4,258
C&C of Oahu	2,782
Hawaii County	574
Maui County	588
Kauai County	219
Agent (filed in Hawaii against another state)	95

News Highlights

November 30, 2020

Honolulu Star Advertiser: [Letters: More tourists means more risk to residents; Trump's leadership on COVID well-established; New stadium belongs next to UH-West Oahu](#)

KITV4: [Kauai 'resort bubble' prepares for new travel restrictions](#)

West Hawaii Today: [Hawaii Island COVID-19 case count increases by one; five hospitalized in Kona](#)

The Maui News: [Pandemic task force rebuff shows failure to respond](#)

The Maui News: [Restaurant closes for cleaning after COVID-19 cases found](#)

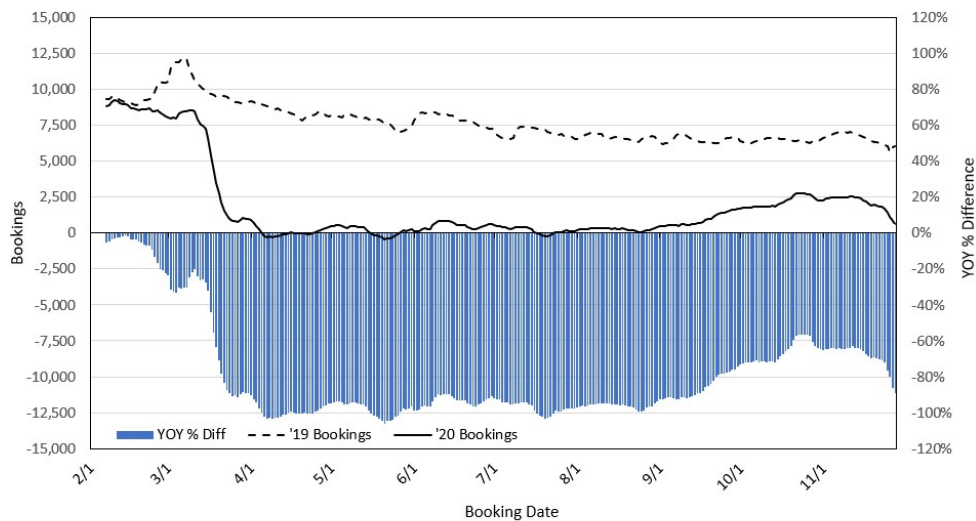
The Garden Island: [2 more travel-related cases](#)

Travel Pulse: [Countries Americans Can Travel to Without COVID-19 Testing or Quarantine](#)

Travel + Leisure: [One of Hawaii's Most Popular Islands Reinstating Its 14-day Quarantine As COVID-19 Cases Rise](#)

USA Today: ['Once-in-a-lifetime opportunity': Hawaii seeks to be seen as a remote workplace with a view](#)

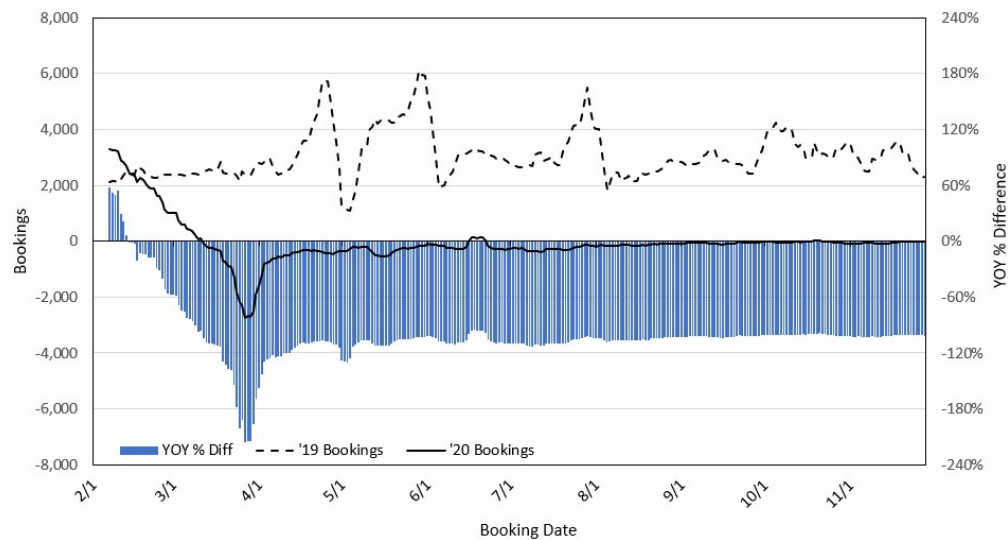
Travel Agency Bookings to Hawaii for Future Arrivals* Based on a 7-day Moving Average, 2020 vs 2019 U.S.



*Future Arrivals refers to all arrivals that are 'future' relative to the referenced booking date.
Source: Global Agency Pro

Update: Nov 28, 2020

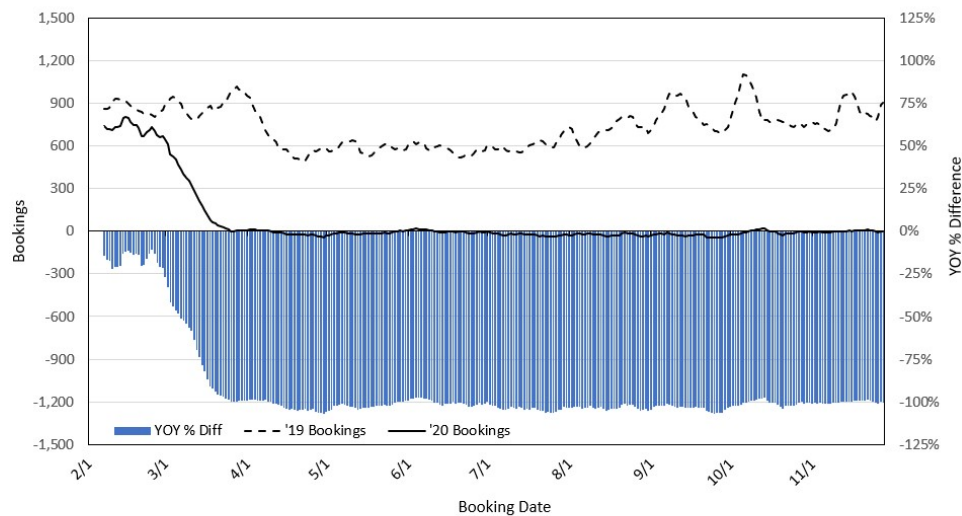
Travel Agency Bookings to Hawaii for Future Arrivals* Based on a 7-day Moving Average, 2020 vs 2019 Japan



*Future Arrivals refers to all arrivals that are 'future' relative to the referenced booking date.
Source: Global Agency Pro

Update: Nov 28, 2020

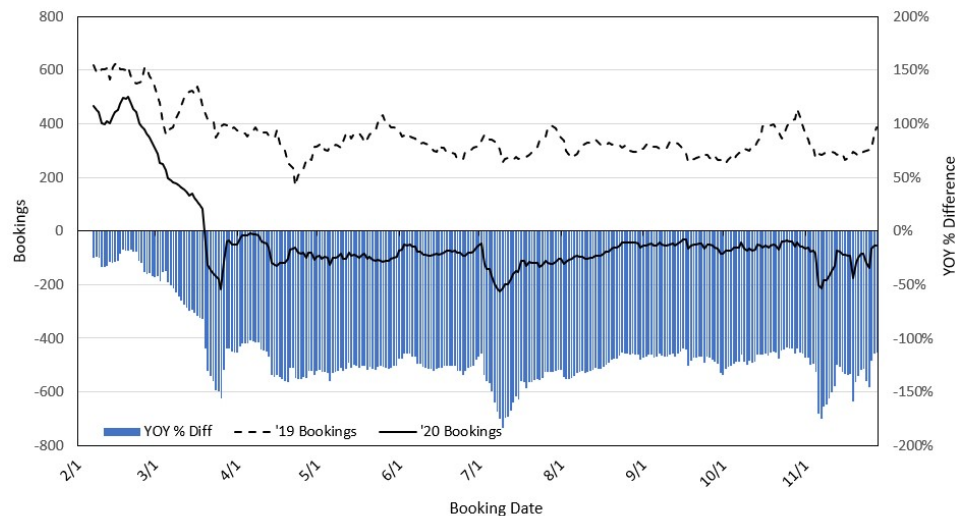
Travel Agency Bookings to Hawaii for Future Arrivals* Based on a 7-day Moving Average, 2020 vs 2019 Canada



*Future Arrivals refers to all arrivals that are 'future' relative to the referenced booking date.
Source: Global Agency Pro

Update: Nov 28, 2020

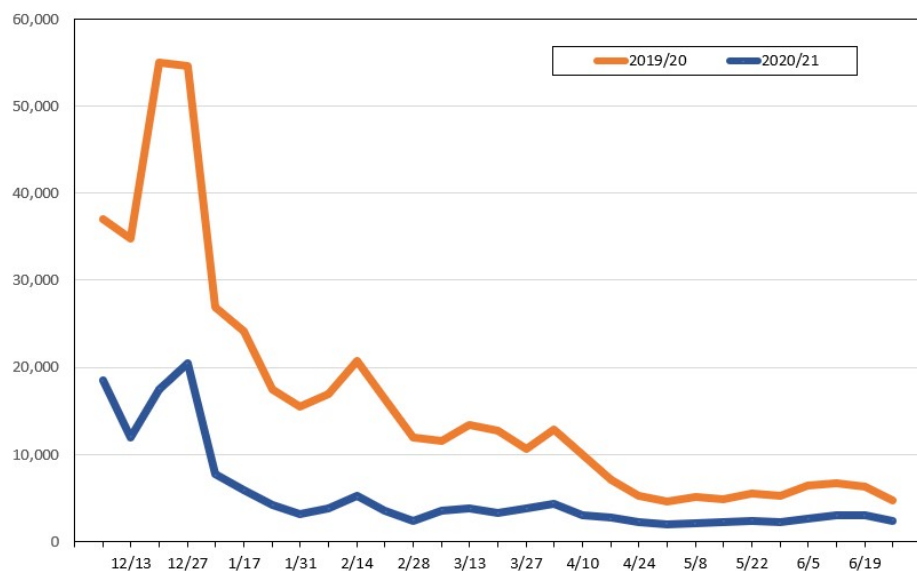
Travel Agency Bookings to Hawaii for Future Arrivals* Based on a 7-day Moving Average, 2020 vs 2019 Australia



*Future Arrivals refers to all arrivals that are 'future' relative to the referenced booking date.
Source: Global Agency Pro

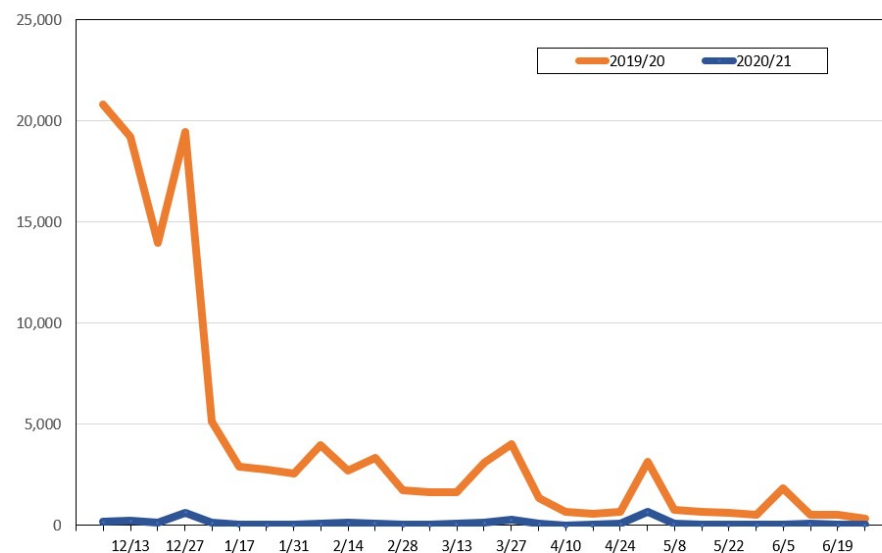
Update: Nov 28, 2020

Travel Agency Weekly Bookings for Future Travel to Hawai'i as of November 28, 2020
U.S.



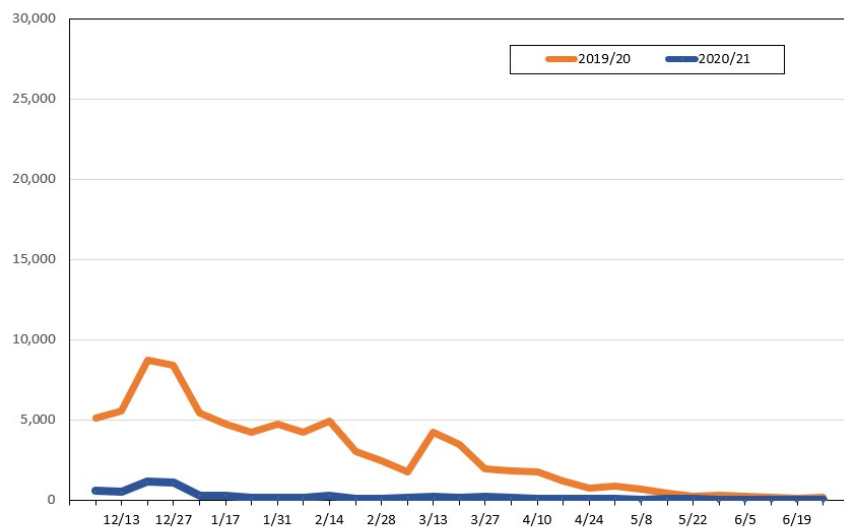
Source: Global Agency Pro, as of November 28, 2020

Travel Agency Weekly Bookings for Future Travel to Hawai'i as of November 28, 2020
Japan



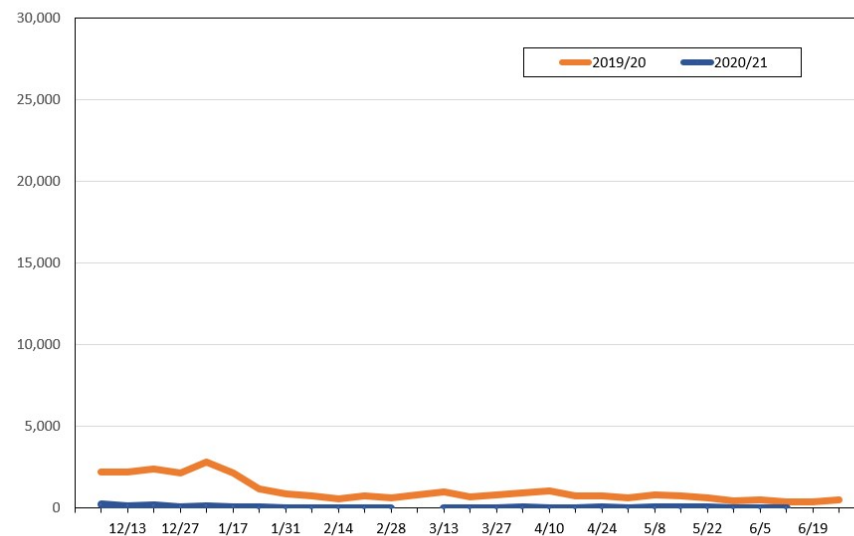
Source: Global Agency Pro, as of November 28, 2020

Travel Agency Weekly Bookings for Future Travel to Hawai'i as of November 28, 2020
Canada



Source: Global Agency Pro, as of November 28, 2020

Travel Agency Weekly Bookings for Future Travel to Hawai'i as of November 28, 2020
Australia



Source: Global Agency Pro, as of November 28, 2020