

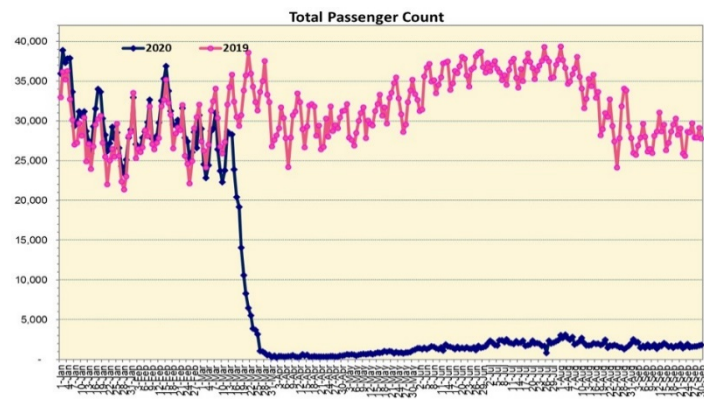
HTA COVID-19 UPDATE

(Issued: 10/1/20 @ 4:00pm)

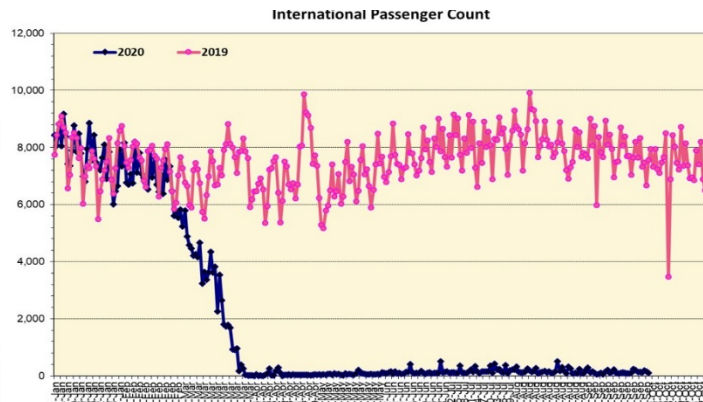
Novel Coronavirus in Hawaii

COVID-19 Positive* Cases

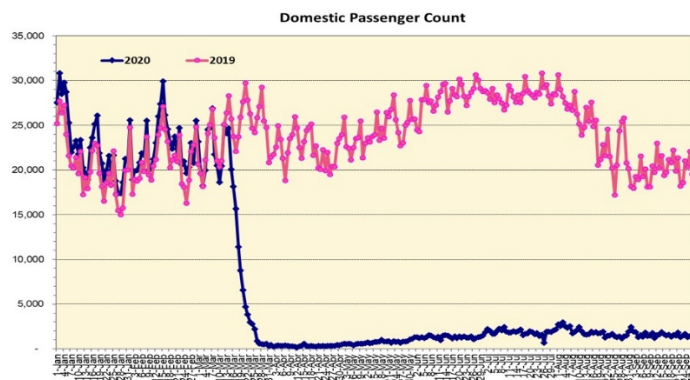
Cumulative totals as of 12:00 noon on October 1, 2020



Note: Excludes flights from Canada



Note: Excludes flights from Canada



Daily Passenger Count Table

09/30/2020	Domestic	International	Total
Oahu	1393	159	1552
Maui	159		159
Island of Hawaii	106		106
Kauai	0		0
State	1658	159	1817

Market Impact Update: <https://www.dropbox.com/10/01/20 HTA COVID19 Update>

09/30/20 Hawaii Passenger Trans-Pacific Arrivals by Air	Honolulu (HNL)	Kahului (OGG)	Kona (KOA)	Lihue (LIH)	Grand Total
Airline Crew	242	23	14	2	281
Essential Worker	77	33	8	0	118
Intended Resident	133	20	19	0	172
Military or Federal Government	190	2	0	0	192
Other	260	8	7	0	275
Other Business	74	10	6	3	93
Pleasure/Vacation	44	20	22	1	87
Returning Resident	502	79	48	3	632
To Attend School	9	0	1	0	10
To Get Married	0	1	0	0	1
Visiting Friends or Relatives	206	21	18	2	247
Transit	N/A	N/A	N/A	N/A	N/A
Grand Total	1,737	217	143	11	2,108

Source: Safe Travels program developed by the State of Hawaii Office of Enterprise Technology Services

Note: The data is preliminary and subject to change

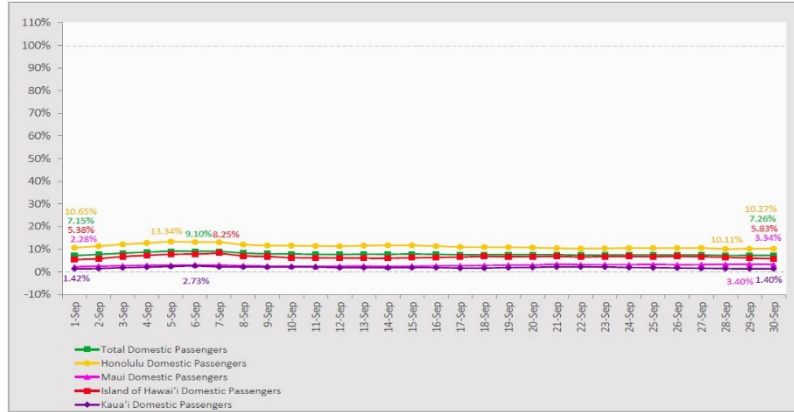
Statewide	Total
Total Cases	12,515 (108 new)
Released from Isolation†	10,340
Required Hospitalization	862
Deaths	139
BY COUNTY	Total
Hawaii County	
Total Cases	736
Released from Isolation†	612
Required Hospitalization	42
Deaths	15
Honolulu County	
Total Cases	11,296
Released from Isolation†	9,307
Required Hospitalization	761
Deaths	114
Kauai County	
Total Cases	59
Released from Isolation†	56
Required Hospitalization	1
Deaths	0
Maui County	
Total Cases	391
Released from Isolation†	365
Required Hospitalization	56
Deaths	9
HI Residents diagnosed outside of HI	33
County Pending	0

*includes presumptive and confirmed cases, data are preliminary and subject to change; note that CDC provides case counts according to states of residence.

†Isolation should be maintained until at least 3 days (72 hours) after resolution of fever and myalgia without the use of antipyretics OR at least 7 days have passed since symptom onset, whichever is longer.

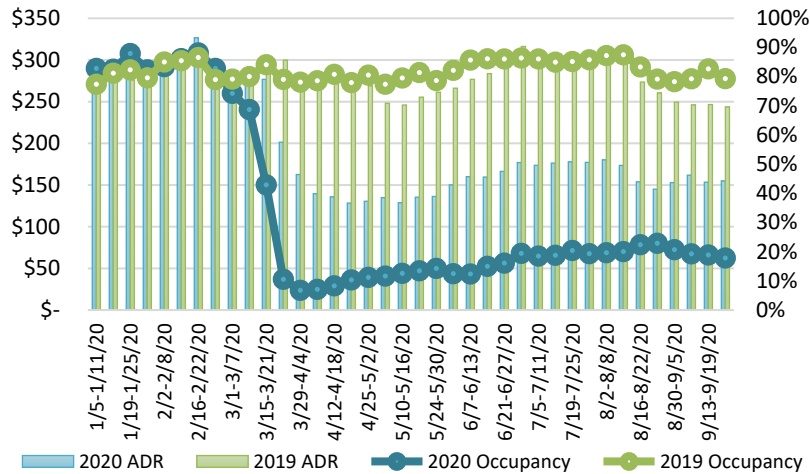
7-Day Domestic by Island Moving Average Daily Passenger Volume

2020 Volume as Percentage of 2019 Volume
Through September 30, 2020



Source: HVCB analysis based on data from DBEDT
Note: Passenger volume figures include both visitors and residents.

State of Hawai'i Hotel Performance by Week - 2020 vs 2019



Source: STR, Inc. © Copyright 2020 Hawai'i Tourism Authority

Hawaii Hotel Performance Info:

For the week of September 20 – September 26, 2020

	Occupancy	ADR	RevPAR
State of Hawaii	17.8%	\$ 154.88	\$ 27.60
Oahu	18.2%	\$ 156.00	\$ 28.32
Maui County	15.9%	\$ 166.22	\$ 26.41
Kauai County	15.5%	\$ 156.50	\$ 24.30
Island of Hawaii	21.7%	\$ 134.67	\$ 29.26

Helpful Resources

Department of Health
<https://hawaiiocovid19.com/>

Department of Health

<https://health.hawaii.gov/docd/advisories/novel-coronavirus-2019>

Domestic by Island Month-to-Date and Year-to-Date Daily Passenger Volume

2020 Volume versus 2019 Volume
Through September 30, 2020

September 2020 (Month-End)

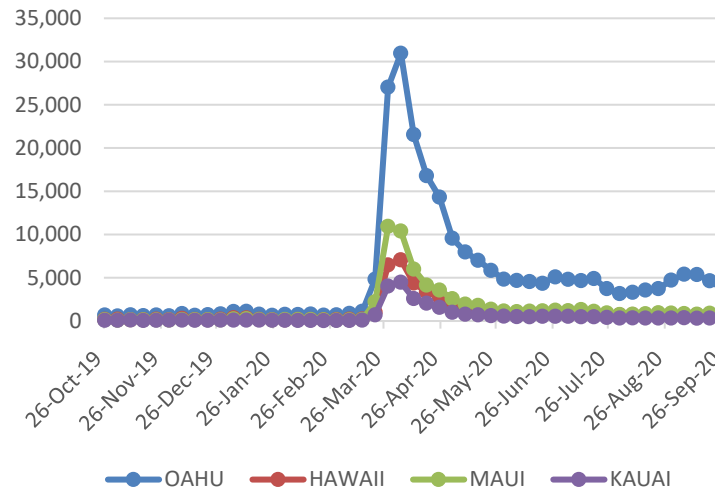
	2020	2019	Volume Change	Percent Change
Honolulu	38,042	335,386	-297,344	-88.7%
Maui County	4,765	158,246	-153,481	-97.0%
Island of Hawai'i	3,783	55,609	-51,826	-93.2%
Kaua'i	948	52,724	-51,776	-98.2%
Total	47,538	601,965	-554,427	-92.1%

2020 (Year-to-Date through September 30)

	2020	2019	Volume Change	Percent Change
Honolulu	1,164,278	3,479,250	-2,314,972	-66.5%
Maui County	458,341	1,694,070	-1,235,729	-72.9%
Island of Hawai'i	229,563	753,134	-523,571	-69.5%
Kaua'i	152,066	579,461	-427,395	-73.8%
Total	2,004,248	6,505,915	-4,501,668	-69.2%

Source: HVCB analysis based on data from DBEDT
Note: Passenger volume figures include both visitors and residents. Total includes other international passengers. 2020 includes one additional day due to Leap Year (February 29th, 2020).

2020 Initial Weekly Unemployment Claims by Island



Weekly Unemployment Initial Claims: September 26, 2020

State of Hawaii	5,702
C&C of Oahu	3,717
Hawaii County	775
Maui County	805
Kauai County	289
Agent (filed in Hawaii against another state)	116

News Highlights

October 1, 2020

Honolulu Star Advertiser:

[Column: Hawaii needs to reopen, but safely — and we're not ready](#)

Hawaii News Now: [Hawaii movie, TV productions set to start work despite virus](#)

The Garden Island: [Kawakami asks Ige to approve post-travel program](#)

The Maui News: [Hawaiian, Alaska are boosting flights to Maui](#)

The Maui News: [State says 50% of contact tracing productive](#)

The Maui News: [Mayors plan to boost online visitor tracker](#)

Big Island Now: [Interisland Travel Won't Return Any Time Soon](#)

Seattle PI: [Travel planning for Oahu and Maui amid Hawaii's reopening](#)

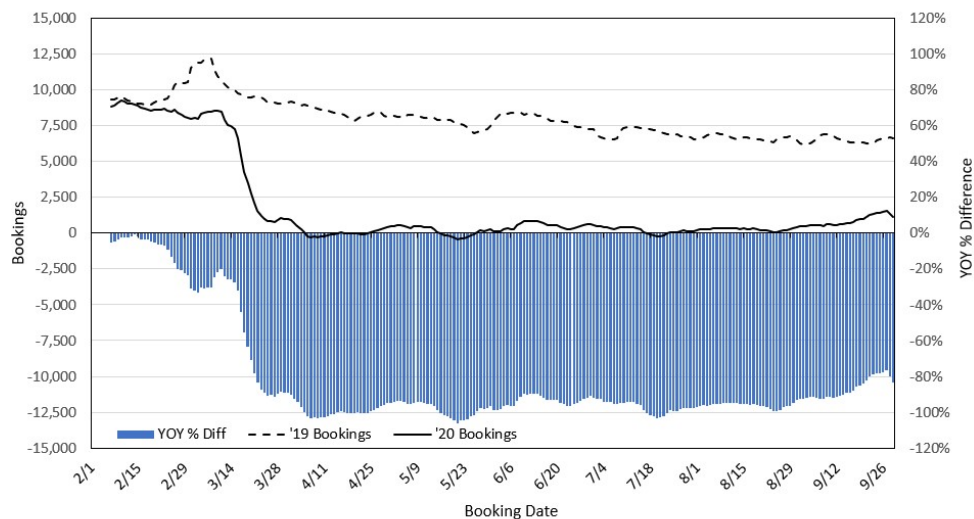
Travel Weekly: [CDC extends No Sail Order for cruises by one month](#)

Adweek: [American, United and JetBlue Roll Out Rapid Covid-19 Testing to Put Travelers at Ease](#)

Dept. of Business, Economic Development & Tourism
<https://dbedt.hawaii.gov/economic/covid19/>

Department of Transportation
<https://hidot.hawaii.gov/coronavirus/>

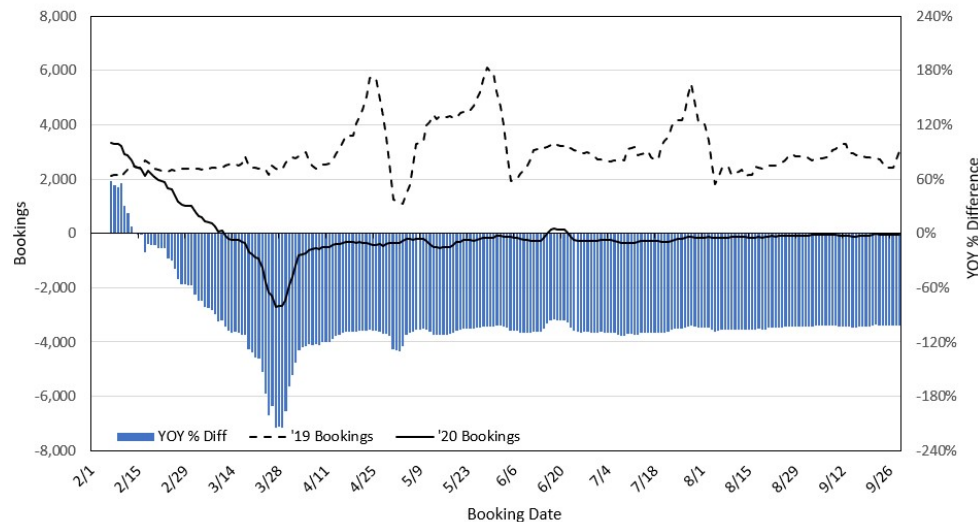
Travel Agency Bookings to Hawaii for Future Arrivals* Based on a 7-day Moving Average, 2020 vs 2019 U.S.



*Future Arrivals refers to all arrivals that are 'future' relative to the referenced booking date.
Source: Global Agency Pro

Update: Sep 29, 2020

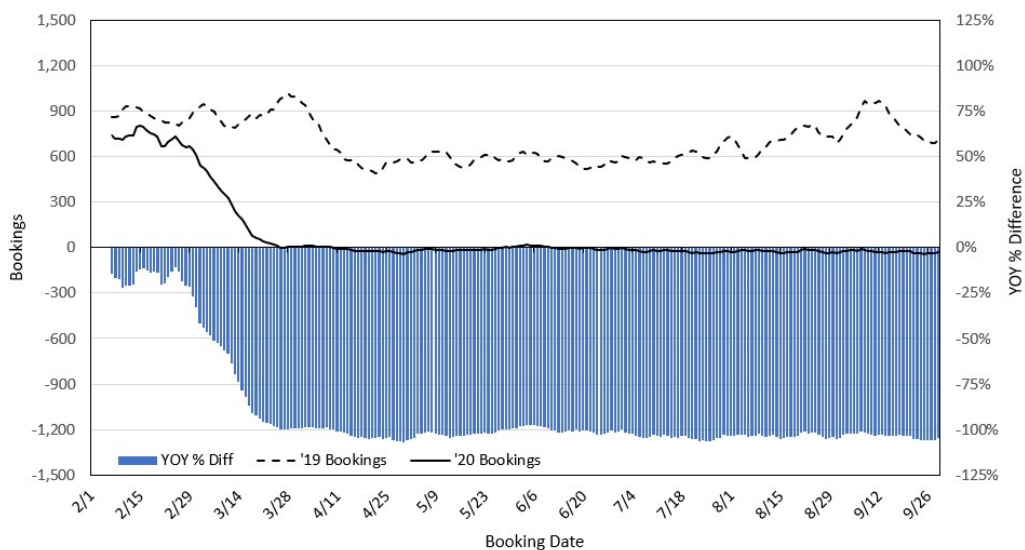
Travel Agency Bookings to Hawaii for Future Arrivals* Based on a 7-day Moving Average, 2020 vs 2019 Japan



*Future Arrivals refers to all arrivals that are 'future' relative to the referenced booking date.
Source: Global Agency Pro

Update: Sep 29, 2020

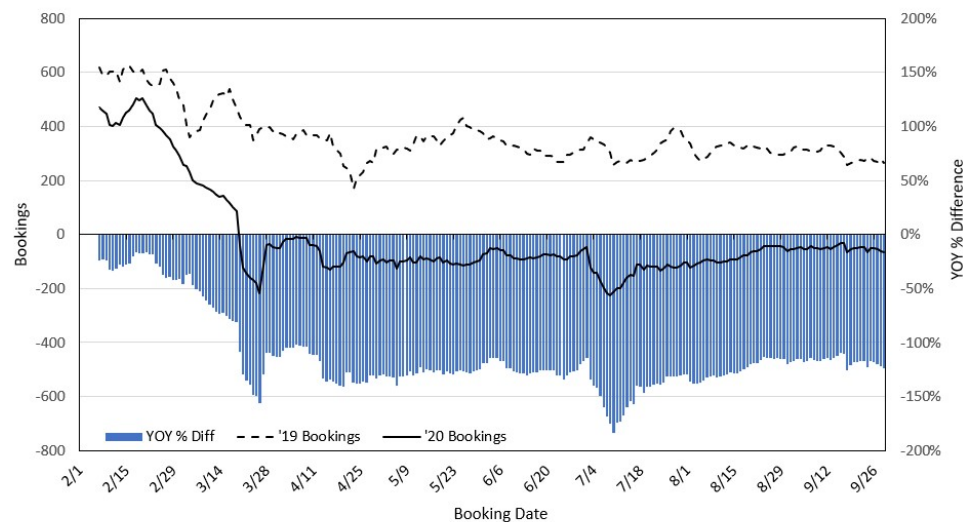
Travel Agency Bookings to Hawaii for Future Arrivals* Based on a 7-day Moving Average, 2020 vs 2019 Canada



*Future Arrivals refers to all arrivals that are 'future' relative to the referenced booking date.
Source: Global Agency Pro

Update: Sep 29, 2020

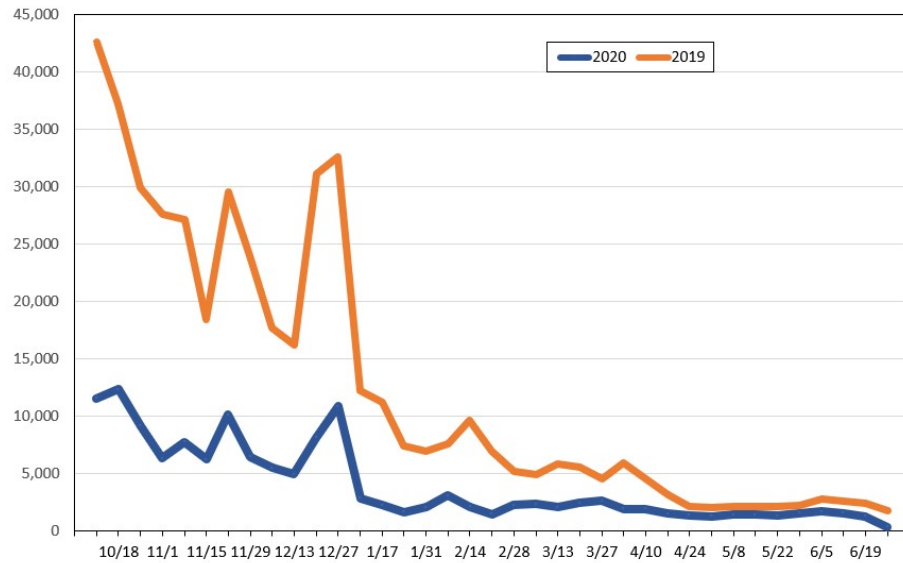
Travel Agency Bookings to Hawaii for Future Arrivals* Based on a 7-day Moving Average, 2020 vs 2019 Australia



*Future Arrivals refers to all arrivals that are 'future' relative to the referenced booking date.
Source: Global Agency Pro

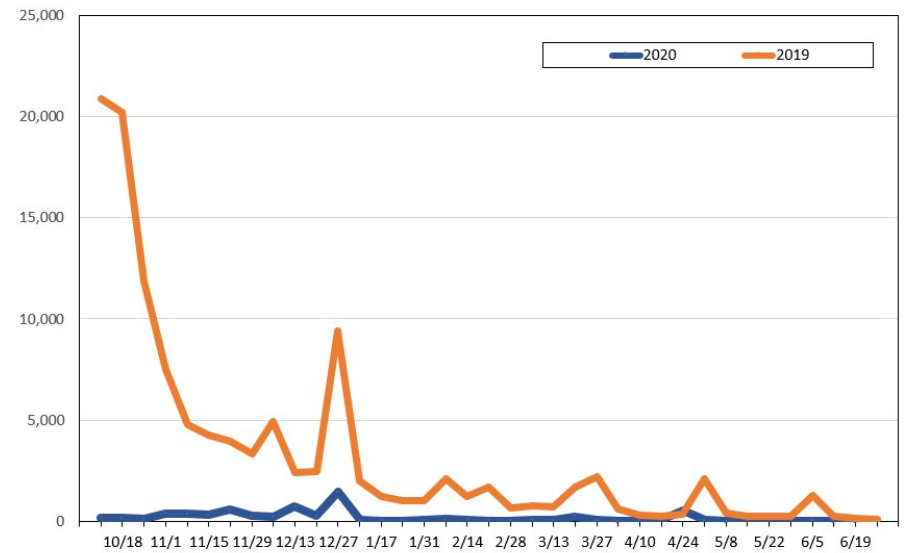
Update: Sep 29, 2020

Travel Agency Weekly Bookings for Future Travel to Hawai'i as of September 29, 2020
U.S.



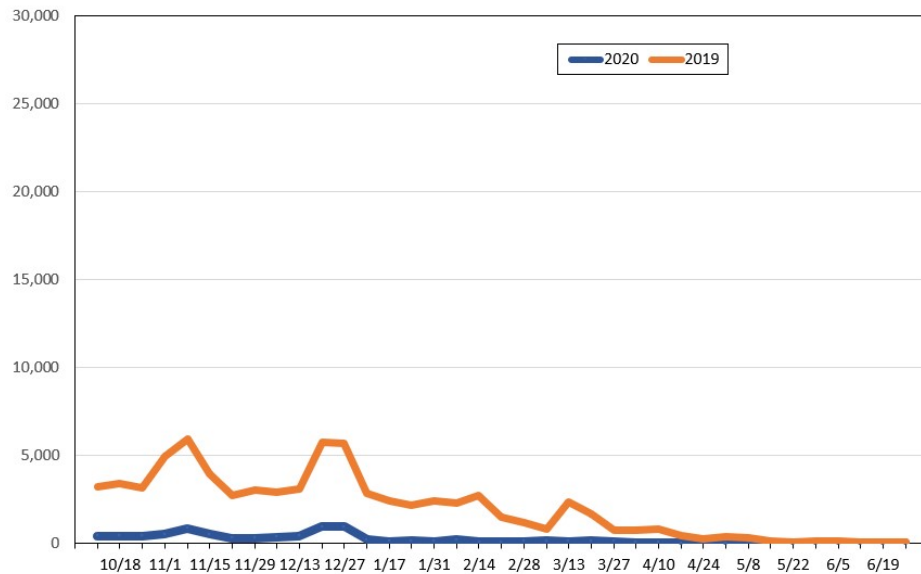
Source: Global Agency Pro, as of September 29, 2020

Travel Agency Weekly Bookings for Future Travel to Hawai'i as of September 29, 2020
Japan



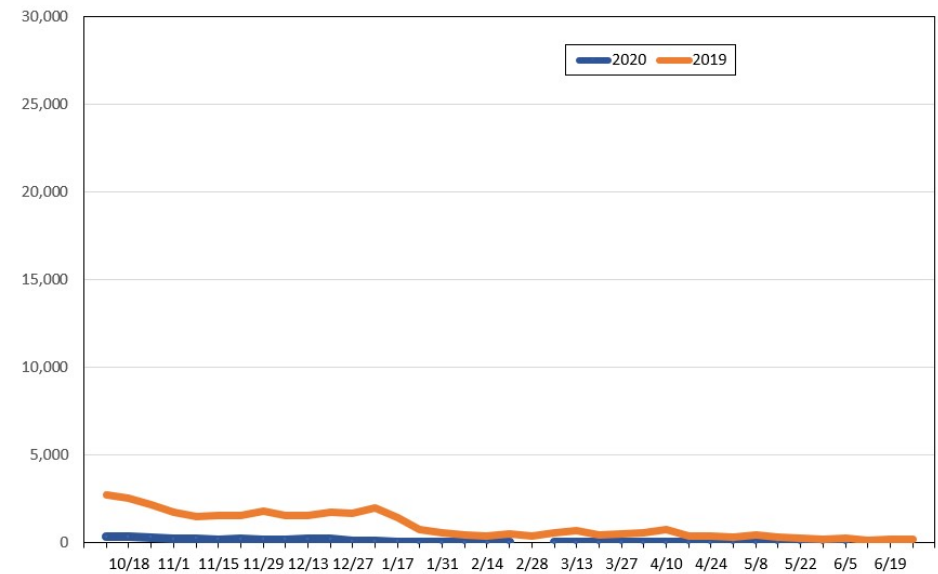
Source: Global Agency Pro, as of September 29, 2020

Travel Agency Weekly Bookings for Future Travel to Hawai'i as of September 29, 2020
Canada



Source: Global Agency Pro, as of September 29, 2020

Travel Agency Weekly Bookings for Future Travel to Hawai'i as of September 29, 2020
Australia



Source: Global Agency Pro, as of September 29, 2020