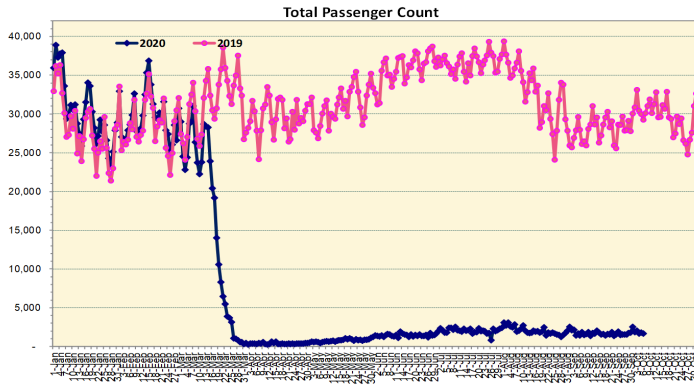
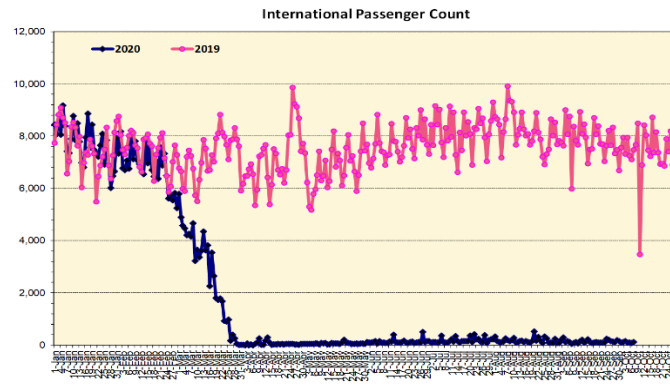


# HTA COVID-19 UPDATE

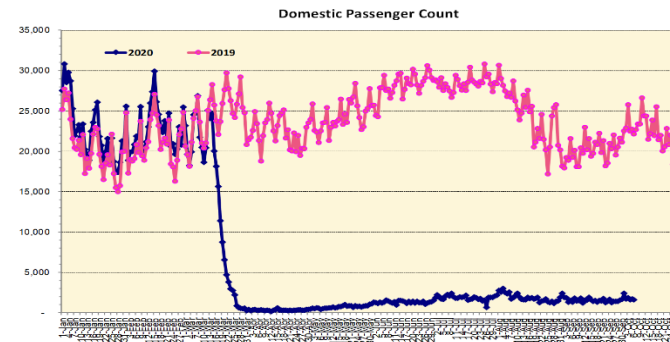
(Issued: 10/7/20 @ 4:00pm)



Note: Excludes flights from Canada



Note: Excludes flights from Canada



## Daily Passenger Count Table

10/06/2020	Domestic	International	Total
Oahu	1413	90	1503
Maui	123		123
Island of Hawaii	57		57
Kauai	0		0
State	1593	90	1683

Market Impact Update: <https://www.dropbox.com/10/07/20 HTA COVID19 Update>

Reason for Trip by Arrival Airport - Transpacific Screened Passengers as of 10/05/20	Honolulu (HNL)	Kahului (OGG)	Kona (KOA)	Lihue (LIH)	Grand Total
Airline Crew	267	17	12	0	296
Corporate Meeting	2	0	0	0	2
Essential Worker	76	15	7	1	99
Honeymoon	4	0	0	0	4
Intended Resident	123	7	8	1	139
Military or Federal Government	115	0	0	0	115
Other	146	3	3	1	153
Other Business	50	7	5	0	62
Pleasure/Vacation	60	7	4	0	71
Returning Resident	558	65	33	2	658
Visiting Friends or Relatives	259	20	10	1	290
Transit	N/A	N/A	N/A	N/A	N/A
<b>Grand Total</b>	<b>1,660</b>	<b>141</b>	<b>82</b>	<b>6</b>	<b>1,889</b>

Source: Safe Travels program developed by the State of Hawaii Office of Enterprise Technology Services

Note: The data is preliminary and subject to change

## Novel Coronavirus in Hawaii

COVID-19 Positive\* Cases

Cumulative totals as of 12:00 noon on October 7, 2020

Statewide	Total
Total Cases	<b>13,045</b> (110 new)
Released from Isolation†	10,573
Required Hospitalization	894
Deaths	163
BY COUNTY	Total
Hawaii County	
Total Cases	852
Released from Isolation†	656
Required Hospitalization	45
Deaths	15
Honolulu County	
Total Cases	11,702
Released from Isolation†	9,496
Required Hospitalization	790
Deaths	135
Kauai County	
Total Cases	59
Released from Isolation†	58
Required Hospitalization	1
Deaths	0
Maui County	
Total Cases	396
Released from Isolation†	363
Required Hospitalization	56
Deaths	12
HI Residents diagnosed outside of HI	36
County Pending	0

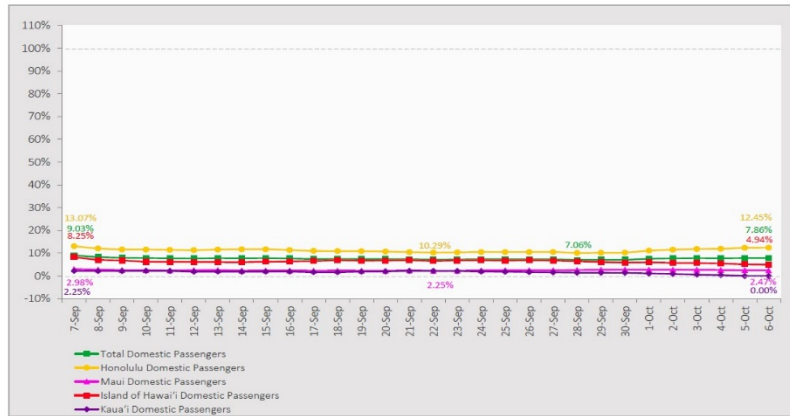
\*includes presumptive and confirmed cases, data are preliminary and subject to change; note that CDC provides case counts according to states of residence.

†Isolation should be maintained until at least 3 days (72 hours) after resolution of fever and myalgia without the use of antipyretics OR at least 7 days have passed since symptom onset, whichever is longer.

## 7-Day Domestic by Island Moving Average Daily Passenger Volume

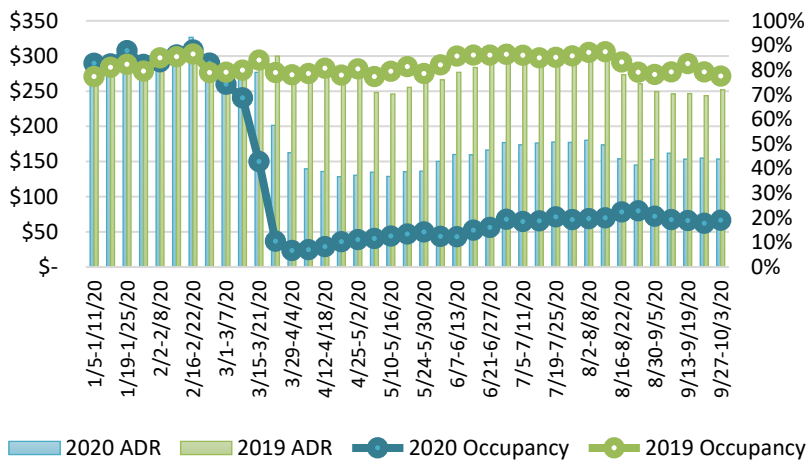
2020 Volume as Percentage of 2019 Volume

Through October 6, 2020



Source: HVCB analysis based on data from DBEDT  
Note: Passenger volume figures include both visitors and residents.

## State of Hawai'i Hotel Performance by Week - 2020 vs 2019



Source: STR, Inc. © Copyright 2020 Hawai'i Tourism Authority

## Hawaii Hotel Performance Info:

For the week of September 27 – October 03, 2020

	Occupancy	ADR	RevPAR
State of Hawaii	19.0%	\$ 153.49	\$ 29.24
Oahu	19.0%	\$ 153.37	\$ 29.18
Maui County	18.8%	\$ 165.99	\$ 31.28
Kauai County	15.0%	\$ 152.30	\$ 22.88
Island of Hawaii	22.6%	\$ 134.69	\$ 30.38

## Domestic by Island Month-to-Date and Year-to-Date Daily Passenger Volume

2020 Volume versus 2019 Volume

Through October 6, 2020

October 2020 (Month-to-Date through October 6)

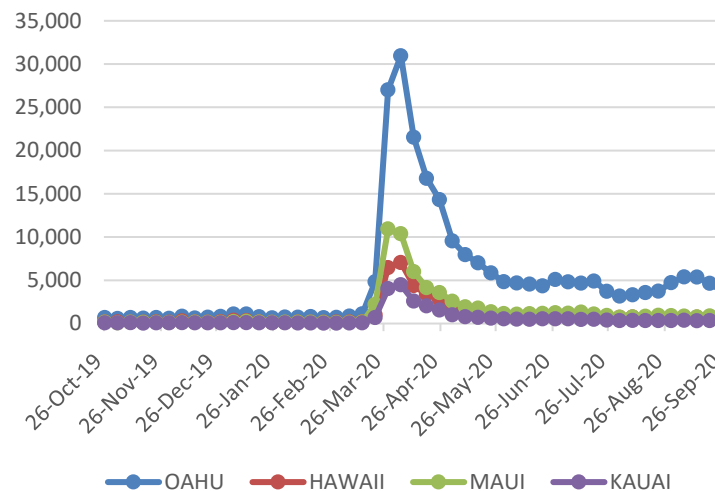
	2020	2019	Volume Change	Percent Change
Honolulu	9,276	73,335	-64,059	-87.4%
Maui County	912	37,166	-36,254	-97.5%
Island of Hawai'i	701	13,824	-13,123	-94.9%
Kauai	0	12,089	-12,089	-100.0%
Total	10,889	136,414	-125,525	-92.0%

2020 (Year-to-Date through October 6)

	2020	2019	Volume Change	Percent Change
Honolulu	1,173,554	3,552,585	-2,379,031	-67.0%
Maui County	458,592	1,731,236	-1,272,645	-73.5%
Island of Hawai'i	230,264	766,958	-536,694	-70.0%
Kauai	152,064	591,550	-439,486	-74.3%
Total	2,014,473	6,642,329	-4,627,856	-69.7%

Source: HVCB analysis based on data from DBEDT  
Note: Passenger volume figures include both visitors and residents. Total includes other international passengers. 2020 includes one additional day due to Leap Year (February 29th, 2020).

## 2020 Initial Weekly Unemployment Claims by Island



## Weekly Unemployment Initial Claims: September 26, 2020

State of Hawaii	5,702
C&C of Oahu	3,717
Hawaii County	775
Maui County	805
Kauai County	289
Agent (filed in Hawaii against another state)	116

## News Highlights

October 7, 2020

**Honolulu Star Advertiser:** [Hawaii island Mayor stands behind decision to keep 14-day quarantine in effect](#)

**Hawaii News Now:** [HNN to host panel discussion Wednesday on small businesses and the coronavirus](#)

**Hawaii News Now:** [Neighbor Islands not sold on plan to welcome visitors back; Big Island opts out](#)

**Hawaii News Now:** [With usage fees down to a trickle, state parks struggle with upkeep](#)

**KHON2:** [Gov. says mayors can 'opt out' of pre-travel testing program](#)

**KHON2:** [More rapid COVID-19 test options for travelers](#)

**KHON2:** [Hard-hit Hawaii impacted by President Trump's decision to halt COVID-19 relief negotiations](#)

**KITV4:** [Honolulu City Councilmember urges Governor Ige to adopt additional testing for travelers](#)

**Honolulu Civil Beat:** [Lee Cataluna: Neighbor Islands Chafe At Oahu-Centric Tourism Plan](#)

## Helpful Resources

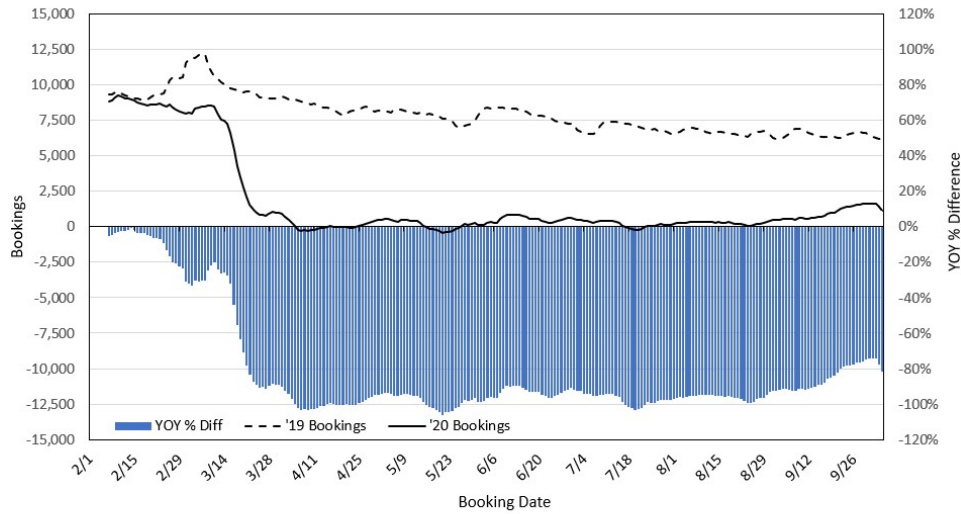
**Department of Health**  
<https://hawaiiocovid19.com/>

**Department of Health**  
<https://health.hawaii.gov/docd/advisories/novel-coronavirus-2019>

**Dept. of Business, Economic Development & Tourism**  
<https://dbedt.hawaii.gov/economic/covid19/>

**Department of Transportation**  
<https://hidot.hawaii.gov/coronavirus/>

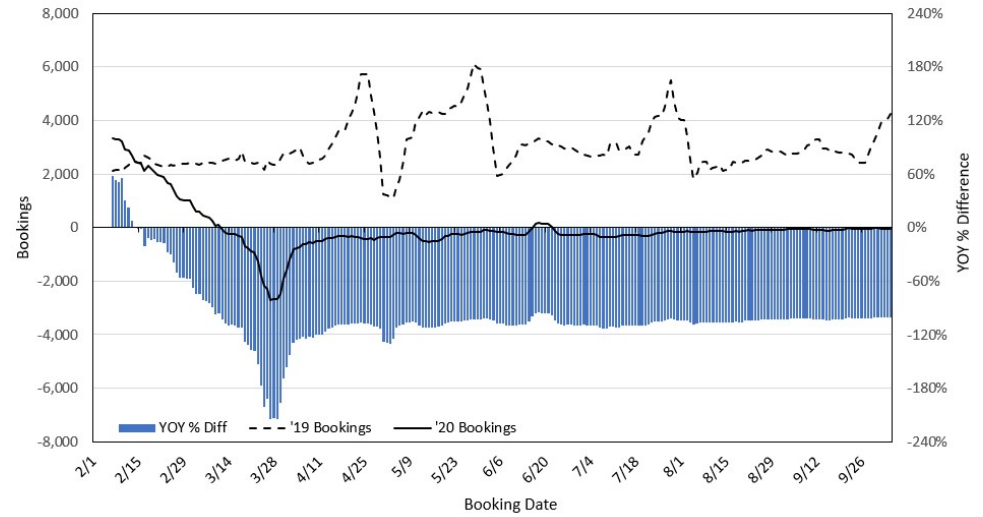
### Travel Agency Bookings to Hawaii for Future Arrivals\* Based on a 7-day Moving Average, 2020 vs 2019 U.S.



\*Future Arrivals refers to all arrivals that are 'future' relative to the referenced booking date.  
Source: Global Agency Pro

Update: Oct 5, 2020

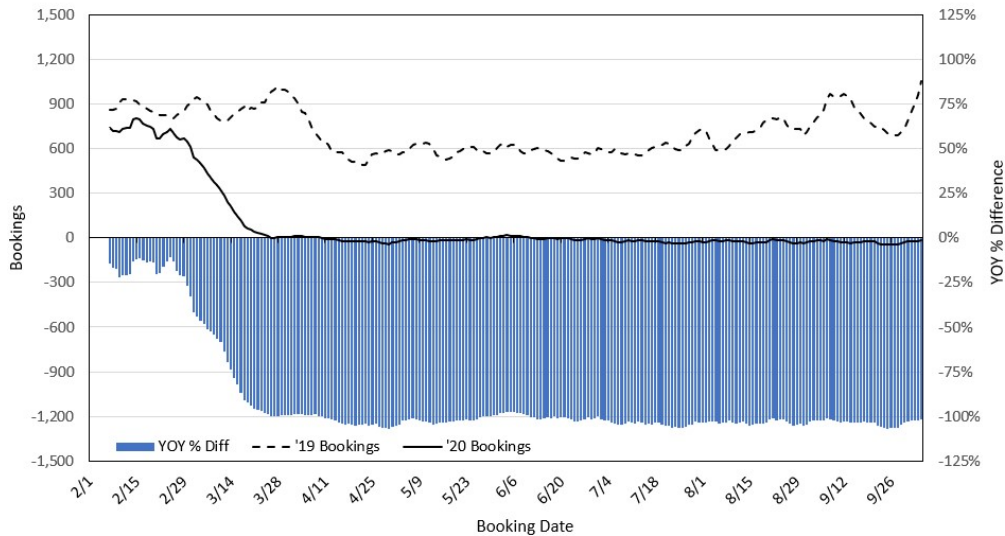
### Travel Agency Bookings to Hawaii for Future Arrivals\* Based on a 7-day Moving Average, 2020 vs 2019 Japan



\*Future Arrivals refers to all arrivals that are 'future' relative to the referenced booking date.  
Source: Global Agency Pro

Update: Oct 5, 2020

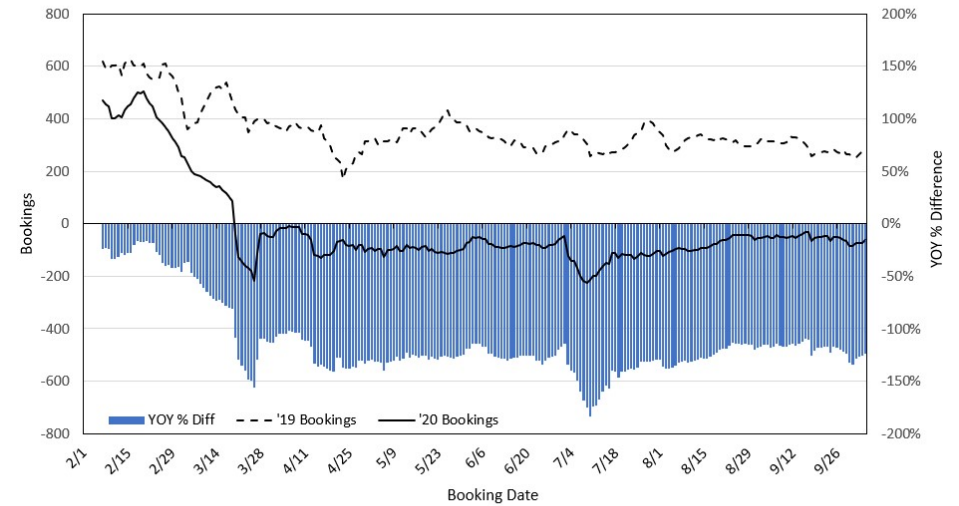
### Travel Agency Bookings to Hawaii for Future Arrivals\* Based on a 7-day Moving Average, 2020 vs 2019 Canada



\*Future Arrivals refers to all arrivals that are 'future' relative to the referenced booking date.  
Source: Global Agency Pro

Update: Oct 5, 2020

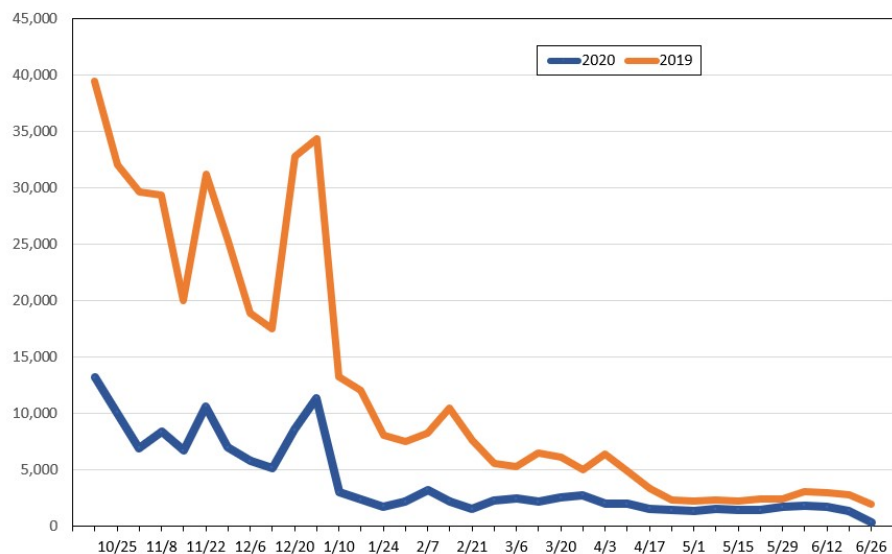
### Travel Agency Bookings to Hawaii for Future Arrivals\* Based on a 7-day Moving Average, 2020 vs 2019 Australia



\*Future Arrivals refers to all arrivals that are 'future' relative to the referenced booking date.  
Source: Global Agency Pro

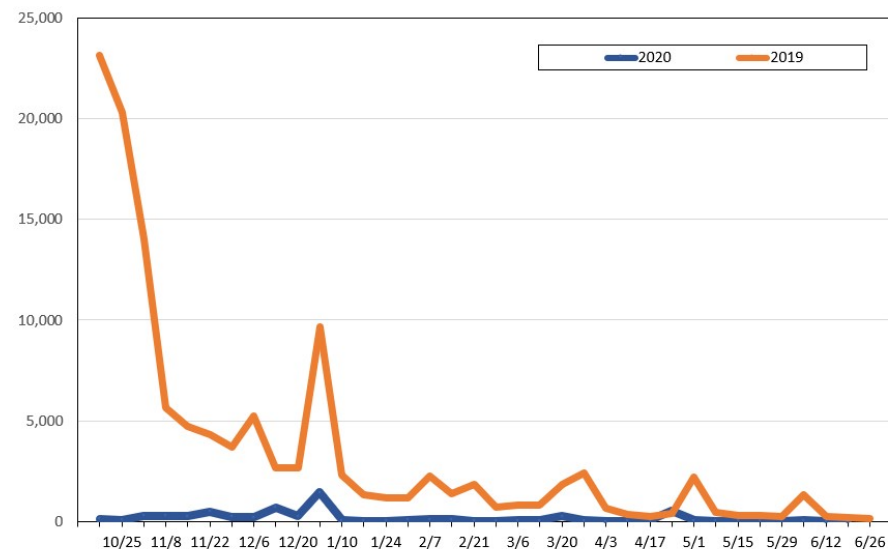
Update: Oct 5, 2020

**Travel Agency Weekly Bookings for Future Travel to Hawai'i as of October 5, 2020**  
U.S.



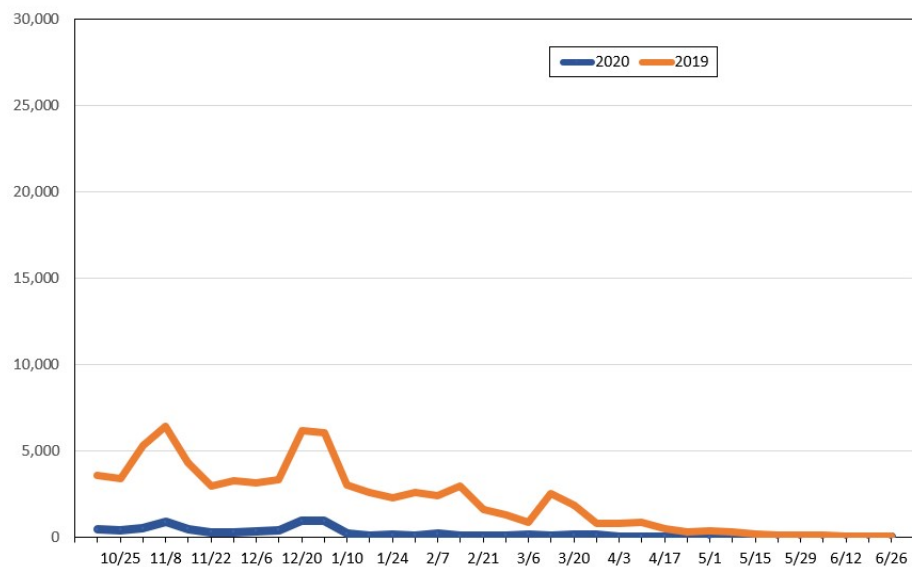
Source: Global Agency Pro, as of October 5, 2020

**Travel Agency Weekly Bookings for Future Travel to Hawai'i as of October 5, 2020**  
Japan



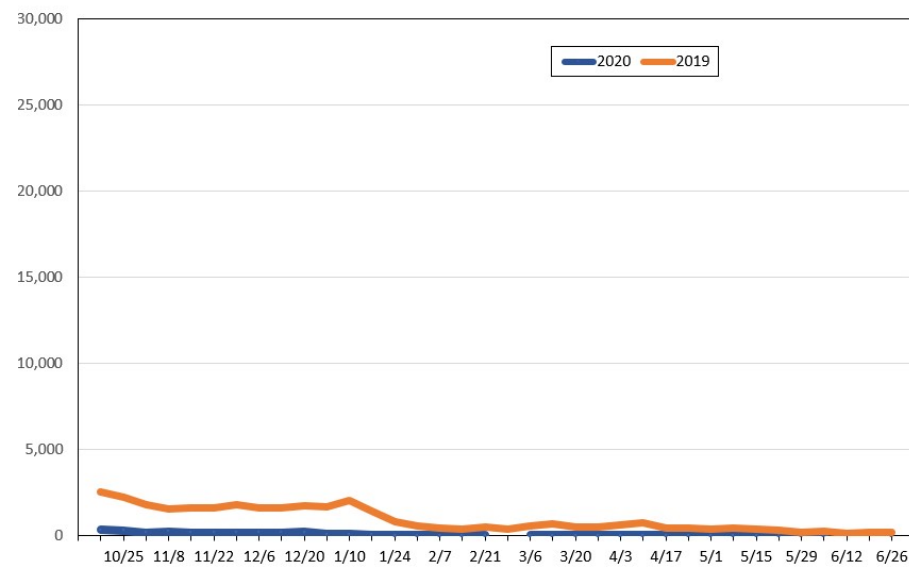
Source: Global Agency Pro, as of October 5, 2020

**Travel Agency Weekly Bookings for Future Travel to Hawai'i as of October 5, 2020**  
Canada



Source: Global Agency Pro, as of October 5, 2020

**Travel Agency Weekly Bookings for Future Travel to Hawai'i as of October 5, 2020**  
Australia



Source: Global Agency Pro, as of October 5, 2020