

# HTA COVID-19 UPDATE

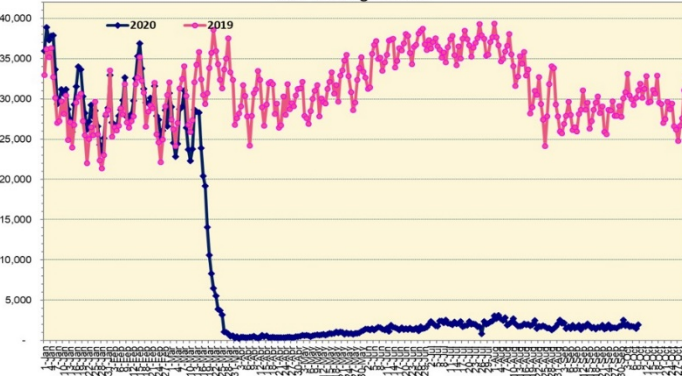
(Issued: 10/9/20 @ 4:00pm)

## Novel Coronavirus in Hawaii

COVID-19 Positive\* Cases

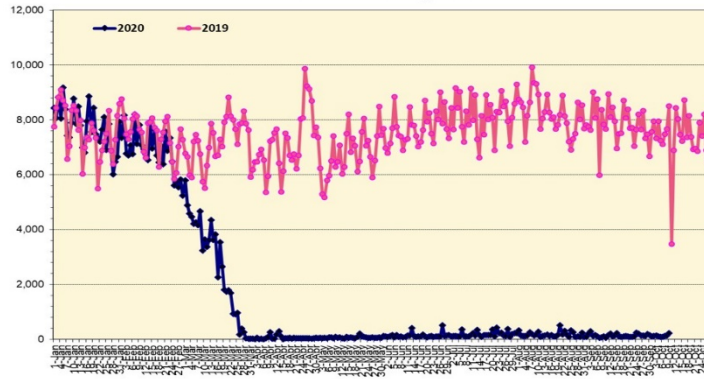
Cumulative totals as of 12:00 noon on October 9, 2020

Total Passenger Count



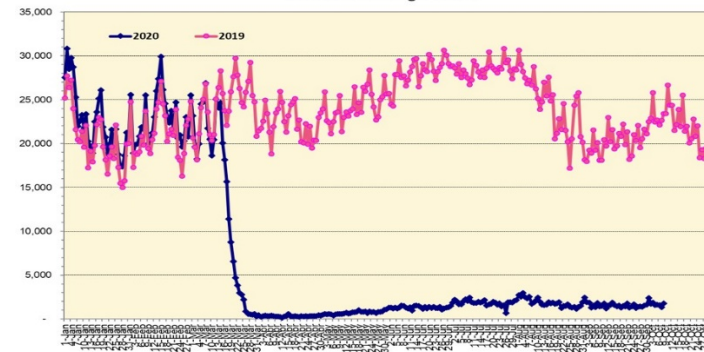
Note: Excludes flights from Canada

International Passenger Count



Note: Excludes flights from Canada

Domestic Passenger Count



### Daily Passenger Count Table

10/08/2020	Domestic	International	Total
Oahu	1523	145	1668
Maui	154		154
Island of Hawaii	107		107
Kauai	0		0
State	1784	145	1929

Market Impact Update: <https://www.dropbox.com/10/09/20 HTA COVID19 Update>

Reason for Trip by Arrival Airport - Transpacific Screened Passengers as of 10/08/20	Honolulu (HNL)	Kahului (OGG)	Kona (KOA)	Lihue (LIH)	Grand Total
Airline Crew	264	22	15	2	303
Corporate Meeting	1	0	0	0	1
Essential Worker	80	15	7	1	103
Honeymoon	1	0	0	0	1
Intended Resident	103	14	16	1	134
Military or Federal Government	167	0	1	0	168
Other	37	2	5	0	44
Other Business	63	11	9	1	84
Pleasure/Vacation	76	9	8	0	93
Returning Resident	444	49	60	4	557
Sports Event	1	0	0	0	1
To Attend School	6	0	0	0	6
Transit	248	0	1	0	249
Visiting Friends or Relatives	262	24	20	0	306
<b>Grand Total</b>	<b>1,753</b>	<b>146</b>	<b>142</b>	<b>9</b>	<b>2,050</b>

Source: Safe Travels program developed by the State of Hawaii Office of Enterprise Technology Services

Note: The data is preliminary and subject to change

Statewide	Total
Total Cases	13,300 (155 new)
Released from Isolation†	10,651
Required Hospitalization	911
Deaths	166
BY COUNTY	Total
Hawaii County	
Total Cases	911
Released from Isolation†	669
Required Hospitalization	47
Deaths	15
Honolulu County	
Total Cases	11,896
Released from Isolation†	9,560
Required Hospitalization	805
Deaths	138
Kauai County	
Total Cases	59
Released from Isolation†	58
Required Hospitalization	1
Deaths	0
Maui County	
Total Cases	397
Released from Isolation†	364
Required Hospitalization	56
Deaths	12
<b>HI Residents diagnosed outside of HI</b>	<b>37</b>
<b>County Pending</b>	<b>0</b>

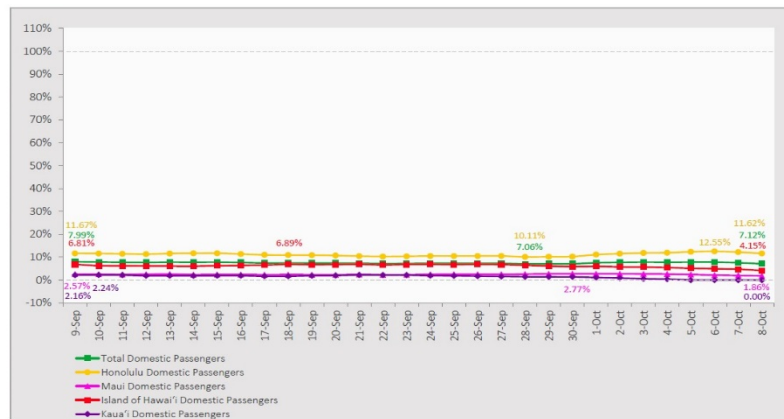
\*includes presumptive and confirmed cases, data are preliminary and subject to change; note that CDC provides case counts according to states of residence.

†Isolation should be maintained until at least 3 days (72 hours) after resolution of fever and myalgia without the use of antipyretics OR at least 7 days have passed since symptom onset, whichever is longer.

## 7-Day Domestic by Island Moving Average Daily Passenger Volume

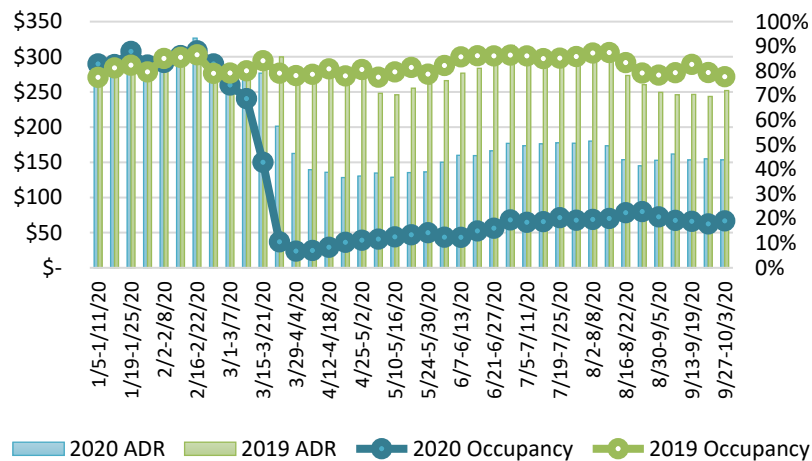
2020 Volume as Percentage of 2019 Volume

Through October 8, 2020



Source: HVCB analysis based on data from DBEDT  
Note: Passenger volume figures include both visitors and residents.

## State of Hawai'i Hotel Performance by Week - 2020 vs 2019



Source: STR, Inc. © Copyright 2020 Hawai'i Tourism Authority

## Hawaii Hotel Performance Info:

For the week of September 27 – October 03, 2020

	Occupancy	ADR	RevPAR
State of Hawaii	19.0%	\$ 153.49	\$ 29.24
Oahu	19.0%	\$ 153.37	\$ 29.18
Maui County	18.8%	\$ 165.99	\$ 31.28
Kauai County	15.0%	\$ 152.30	\$ 22.88
Island of Hawaii	22.6%	\$ 134.69	\$ 30.38

## Domestic by Island Month-to-Date and Year-to-Date Daily Passenger Volume

2020 Volume versus 2019 Volume

Through October 8, 2020

October 2020 (Month-to-Date through October 8)

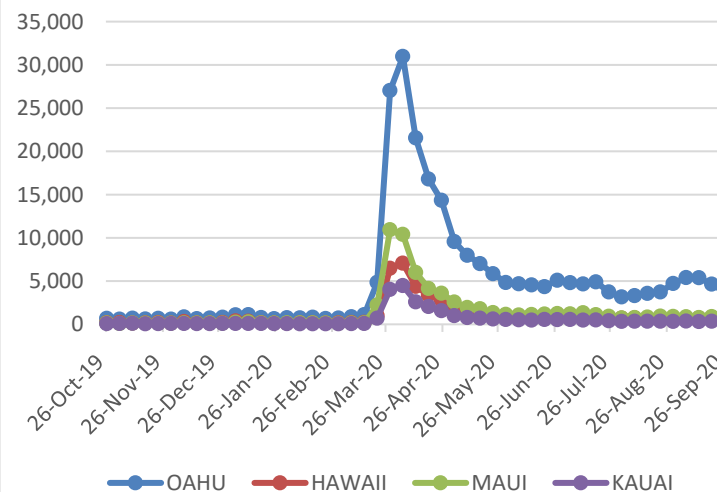
	2020	2019	Volume Change	Percent Change
Honolulu	12,037	97,872	-85,835	-87.7%
Maui County	1,025	48,803	-47,778	-97.9%
Island of Hawai'i	902	18,402	-17,500	-95.1%
Kaua'i	0	16,177	-16,177	-100.0%
Total	13,964	181,254	-167,290	-92.3%

2020 (Year-to-Date through October 8)

	2020	2019	Volume Change	Percent Change
Honolulu	1,176,315	3,577,122	-2,400,807	-67.1%
Maui County	458,705	1,742,873	-1,284,168	-73.7%
Island of Hawai'i	230,465	771,536	-541,071	-70.1%
Kaua'i	152,064	595,638	-443,574	-74.5%
Total	2,017,549	6,687,169	-4,669,621	-69.8%

Source: HVCB analysis based on data from DBEDT  
Note: Passenger volume figures include both visitors and residents. Total includes other international passengers. 2020 includes one additional day due to Leap Year (February 29th, 2020).

## 2020 Initial Weekly Unemployment Claims by Island



## Weekly Unemployment Initial Claims: September 26, 2020

State of Hawaii	5,702
C&C of Oahu	3,717
Hawaii County	775
Maui County	805
Kauai County	289
Agent (filed in Hawaii against another state)	116

## News Highlights

October 9, 2020

Honolulu Star Advertiser:

[Editorial: Pre-travel testing plan inconsistent](#)

**KHON2:** [Mayor Caldwell says 'Honolulu is two weeks away from entering Tier 2'](#)

**KITV4:** [Those travelers that choose not to take a COVID-19 test will still face restrictions](#)

**The Maui News:** [What about interisland travel?](#)

**The Maui News:** [Lawmaker criticizes contact tracing for COVID-19 on Molokai](#)

**Forbes:** [Amid U.S. Golf Boom, Struggling Hawaii Courses Look To Pre-Travel Testing For Needed Boost](#)

**Travel + Leisure:** [If You Want to Visit Hawaii and Skip Quarantine, There Are New Rules You Need to Know](#)

**TravelAge West:** [Hawaii Discusses the Possibility of a Post-Travel COVID-19 Test](#)

**The New York Times:** [Hawaii will stop requiring quarantine for travelers who have recent negative tests.](#)

## Helpful Resources

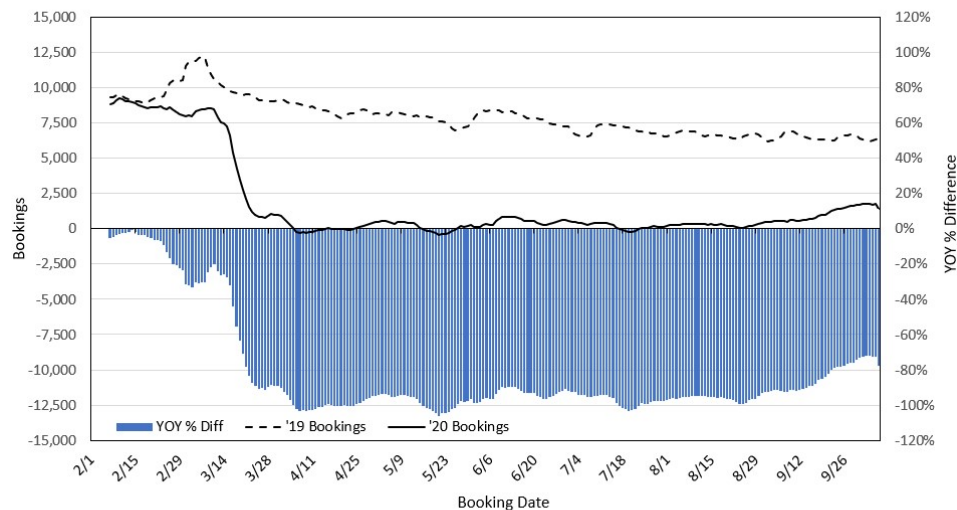
Department of Health  
<https://hawaiiocovid19.com/>

Department of Health  
<https://health.hawaii.gov/docd/advisories/novel-coronavirus-2019>

Dept. of Business, Economic Development & Tourism  
<https://dbedt.hawaii.gov/economic/covid19/>

Department of Transportation  
<https://hidot.hawaii.gov/coronavirus/>

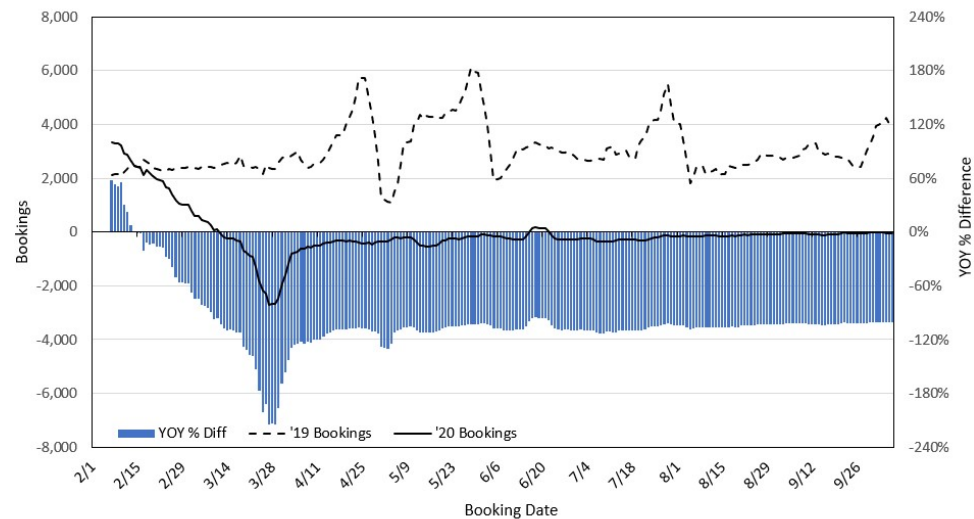
### Travel Agency Bookings to Hawaii for Future Arrivals\* Based on a 7-day Moving Average, 2020 vs 2019 U.S.



\*Future Arrivals refers to all arrivals that are 'future' relative to the referenced booking date.  
Source: Global Agency Pro

Update: Oct 7, 2020

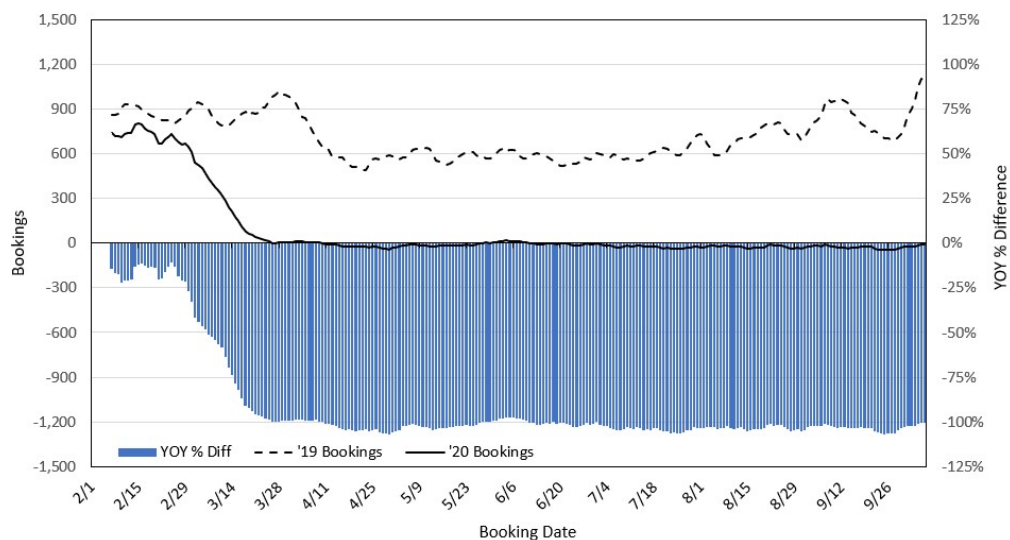
### Travel Agency Bookings to Hawaii for Future Arrivals\* Based on a 7-day Moving Average, 2020 vs 2019 Japan



\*Future Arrivals refers to all arrivals that are 'future' relative to the referenced booking date.  
Source: Global Agency Pro

Update: Oct 7, 2020

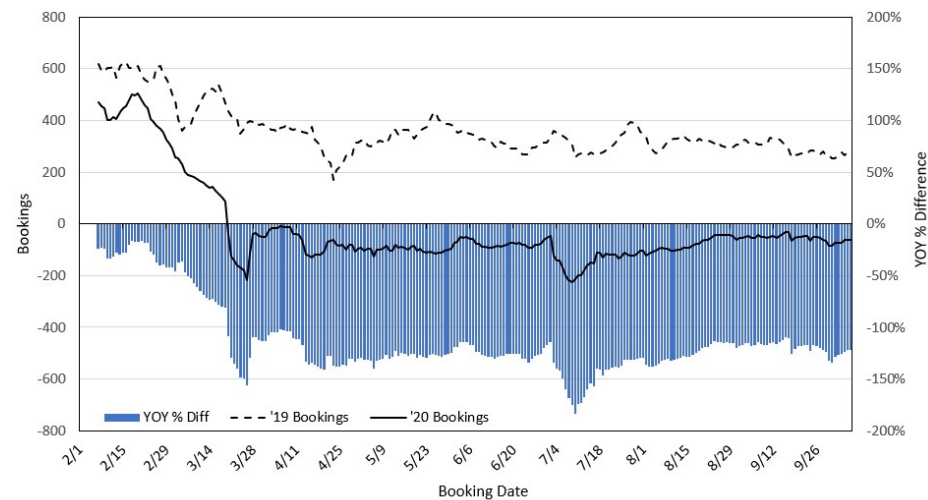
### Travel Agency Bookings to Hawaii for Future Arrivals\* Based on a 7-day Moving Average, 2020 vs 2019 Canada



\*Future Arrivals refers to all arrivals that are 'future' relative to the referenced booking date.  
Source: Global Agency Pro

Update: Oct 7, 2020

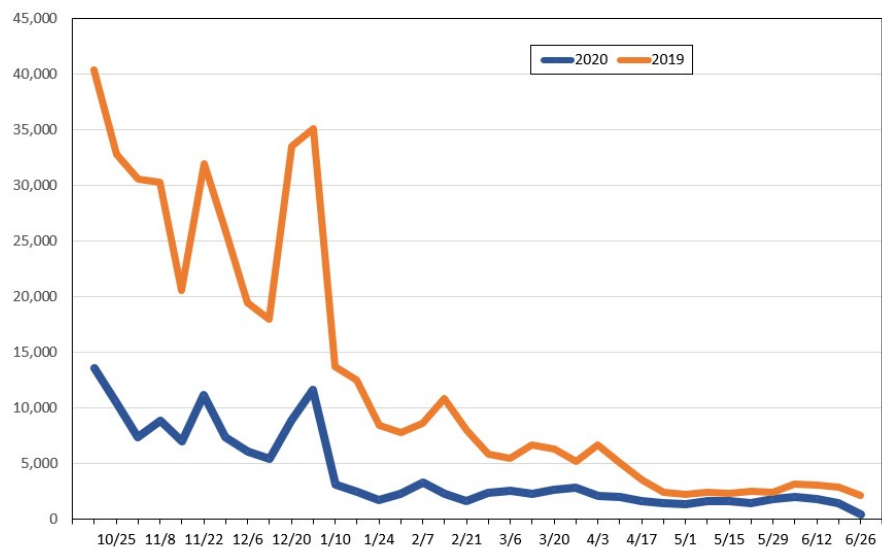
### Travel Agency Bookings to Hawaii for Future Arrivals\* Based on a 7-day Moving Average, 2020 vs 2019 Australia



\*Future Arrivals refers to all arrivals that are 'future' relative to the referenced booking date.  
Source: Global Agency Pro

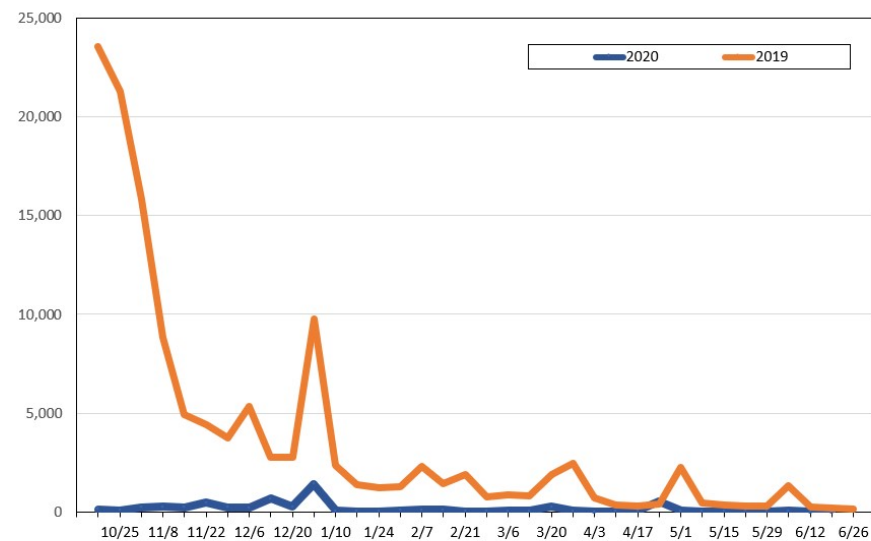
Update: Oct 7, 2020

**Travel Agency Weekly Bookings for Future Travel to Hawai'i as of October 7, 2020**  
U.S.



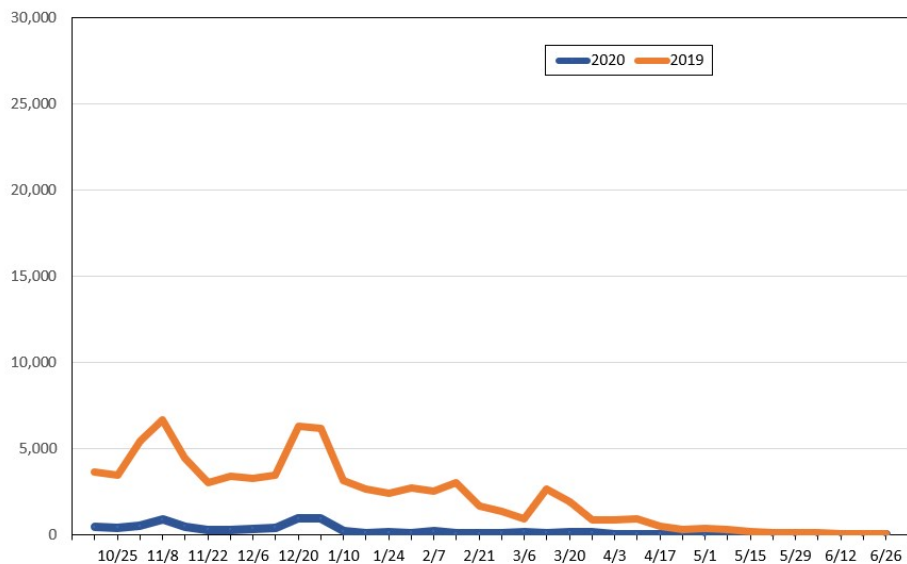
Source: Global Agency Pro, as of October 7, 2020

**Travel Agency Weekly Bookings for Future Travel to Hawai'i as of October 7, 2020**  
Japan



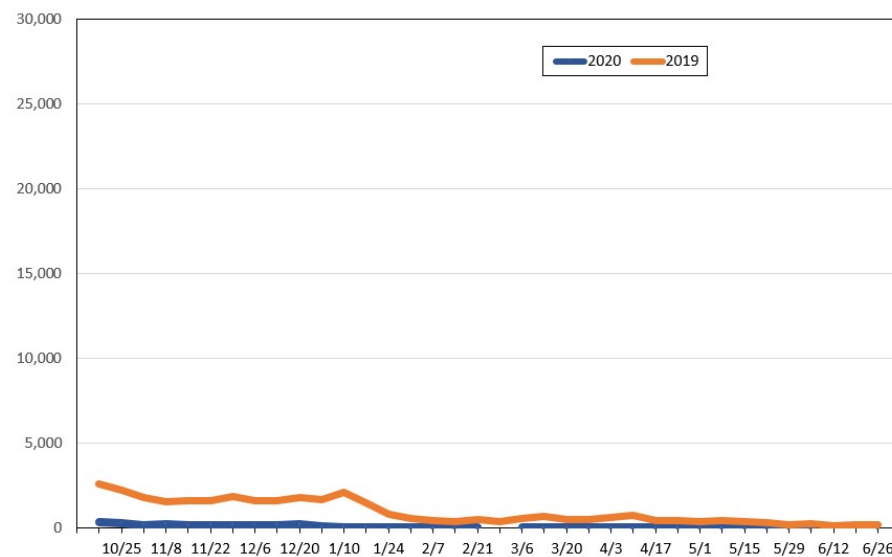
Source: Global Agency Pro, as of October 7, 2020

**Travel Agency Weekly Bookings for Future Travel to Hawai'i as of October 7, 2020**  
Canada



Source: Global Agency Pro, as of October 7, 2020

**Travel Agency Weekly Bookings for Future Travel to Hawai'i as of October 7, 2020**  
Australia



Source: Global Agency Pro, as of October 7, 2020