

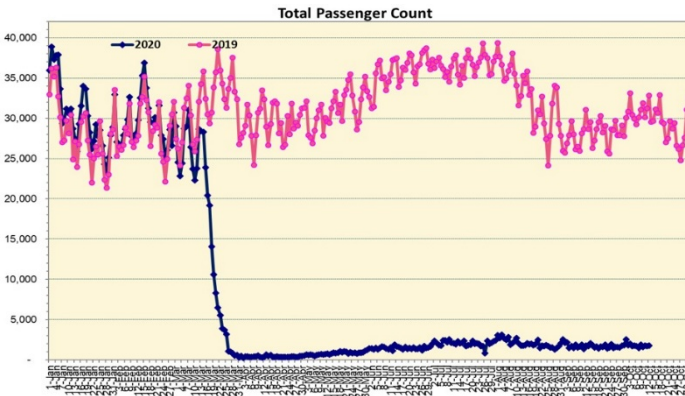
# HTA COVID-19 UPDATE

(Issued: 10/13/20 @ 4:00pm)

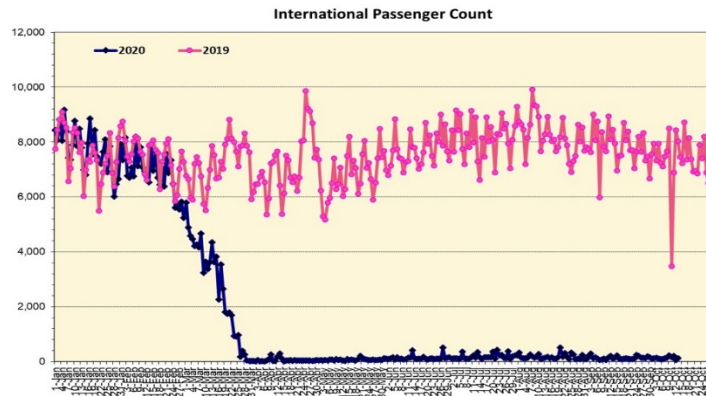
## Novel Coronavirus in Hawaii

COVID-19 Positive\* Cases

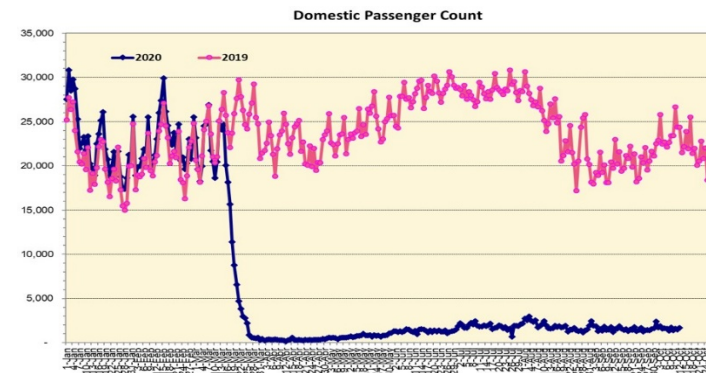
Cumulative totals as of 12:00 noon on October 13, 2020



Note: Excludes flights from Canada



Note: Excludes flights from Canada



### Daily Passenger Count Table

10/12/2020	Domestic	International	Total
Oahu	1506	59	1565
Maui	118		118
Island of Hawaii	65		65
Kauai	0		0
State	1689	59	1748

Market Impact Update: <https://www.dropbox.com/10/13/20 HTA COVID19 Update>

Reason for Trip by Arrival Airport - Transpacific Screened Passengers as of 10/12/20	Honolulu (HNL)	Kahului (OGG)	Kona (KOA)	Lihue (LIH)	Grand Total
Airline Crew	276	22	9	1	308
Corporate Meeting	2	0	0	0	2
Essential Worker	121	20	18	0	159
Honeymoon	2	0	2	0	4
Incentive Trip	1	0	0	0	1
Intended Resident	92	3	7	0	102
Military or Federal Government	149	0	0	1	150
Other	25	2	2	1	30
Other Business	73	12	6	2	93
Pleasure/Vacation	49	3	1	2	55
Returning Resident	659	65	37	6	767
Sports Event	5	0	0	0	5
To Attend School	1	0	0	0	1
To Get Married	1	0	0	0	1
Transit	153	0	1	0	154
Visiting Friends or Relatives	230	25	12	1	268
<b>Grand Total</b>	<b>1,839</b>	<b>152</b>	<b>95</b>	<b>14</b>	<b>2,100</b>

Source: Safe Travels program developed by the State of Hawaii Office of Enterprise Technology Services

Note: The data is preliminary and subject to change

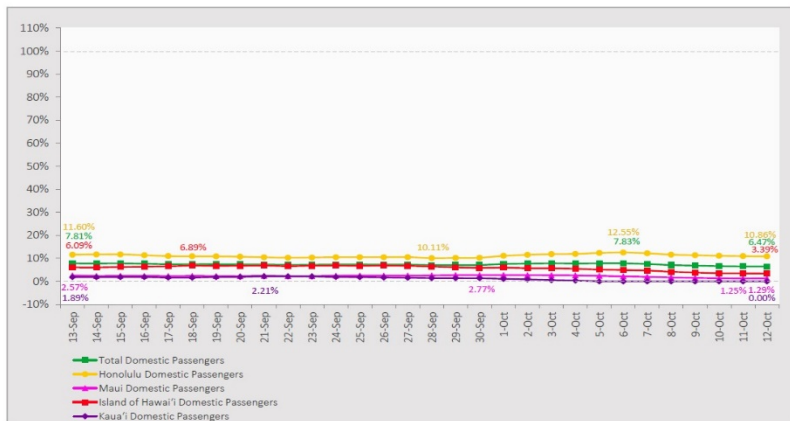
Statewide	Total
Total Cases	13,575 (62 new)
Released from Isolation†	10,834
Required Hospitalization	951
Deaths	173
BY COUNTY	Total
Hawaii County	
Total Cases	974
Released from Isolation†	725
Required Hospitalization	50
Deaths	15
Honolulu County	
Total Cases	12,097
Released from Isolation†	9,675
Required Hospitalization	841
Deaths	144
Kauai County	
Total Cases	59
Released from Isolation†	58
Required Hospitalization	1
Deaths	0
Maui County	
Total Cases	408
Released from Isolation†	376
Required Hospitalization	57
Deaths	13
HI Residents diagnosed outside of HI	37
County Pending	0

\*includes presumptive and confirmed cases, data are preliminary and subject to change; note that CDC provides case counts according to states of residence.

†Isolation should be maintained until at least 3 days (72 hours) after resolution of fever and myalgia without the use of antipyretics OR at least 7 days have passed since symptom onset, whichever is longer.

## 7-Day Domestic by Island Moving Average Daily Passenger Volume

2020 Volume as Percentage of 2019 Volume  
Through October 12, 2020



Source: HVCB analysis based on data from DBEDT  
Note: Passenger volume figures include both visitors and residents.

## Domestic by Island Month-to-Date and Year-to-Date Daily Passenger Volume

2020 Volume versus 2019 Volume  
Through October 12, 2020

October 2020 (Month-to-Date through October 12)

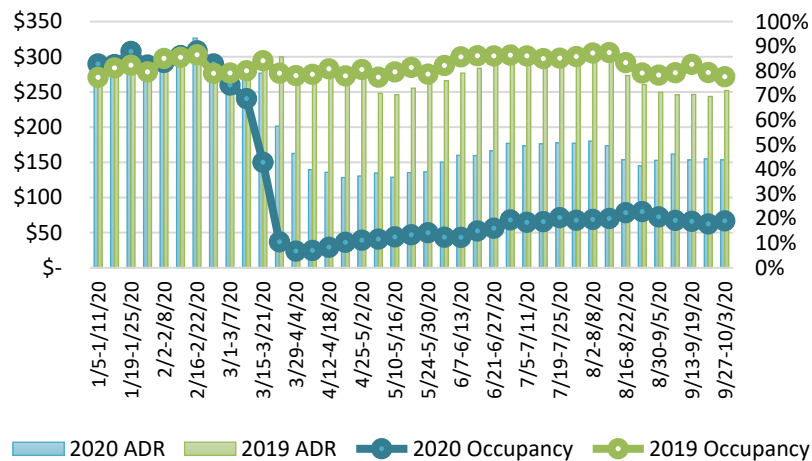
	2020	2019	Volume Change	Percent Change
Honolulu	17,483	147,936	-130,453	-88.2%
Maui County	1,338	75,938	-74,600	-98.2%
Island of Hawai'i	1,229	28,473	-27,244	-95.7%
Kauai	0	25,017	-25,017	-100.0%
Total	20,050	277,364	-257,314	-92.8%

2020 (Year-to-Date through October 12)

	2020	2019	Volume Change	Percent Change
Honolulu	1,181,761	3,627,186	-2,445,425	-67.4%
Maui County	459,018	1,770,008	-1,310,990	-74.1%
Island of Hawai'i	230,792	781,607	-550,815	-70.5%
Kauai	152,064	604,478	-452,414	-74.8%
Total	2,023,635	6,783,279	-4,759,645	-70.2%

Source: HVCB analysis based on data from DBEDT  
Note: Passenger volume figures include both visitors and residents. Total includes other international passengers. 2020 includes one additional day due to Leap Year (February 29th, 2020).

## State of Hawai'i Hotel Performance by Week - 2020 vs 2019



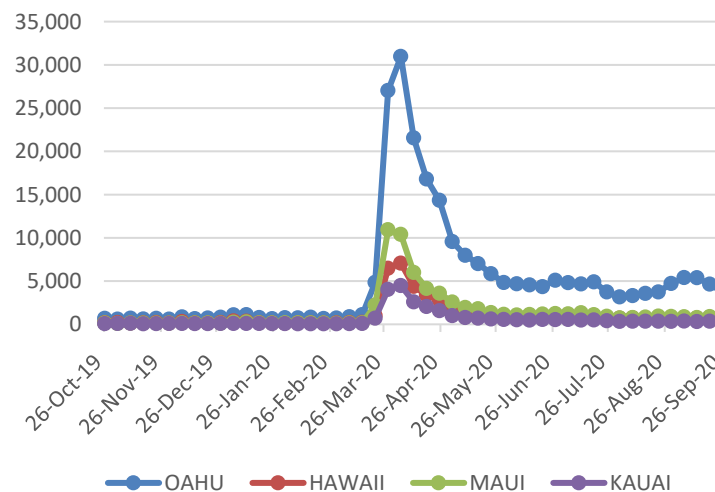
Source: STR, Inc. © Copyright 2020 Hawai'i Tourism Authority

## Hawaii Hotel Performance Info:

For the week of September 27 – October 03, 2020

	Occupancy	ADR	RevPAR
State of Hawaii	19.0%	\$ 153.49	\$ 29.24
Oahu	19.0%	\$ 153.37	\$ 29.18
Maui County	18.8%	\$ 165.99	\$ 31.28
Kauai County	15.0%	\$ 152.30	\$ 22.88
Island of Hawaii	22.6%	\$ 134.69	\$ 30.38

## 2020 Initial Weekly Unemployment Claims by Island



## Weekly Unemployment Initial Claims: September 26, 2020

State of Hawaii	5,702
C&C of Oahu	3,717
Hawaii County	775
Maui County	805
Kauai County	289
Agent (filed in Hawaii against another state)	116

## News Highlights

October 13, 2020

**Hawaii News Now:** [Caldwell: Oahu lacks capacity to test travelers second time, at least for now](#)

**Hawaii News Now:** [Three days from implementation, details of state's tourism relaunch still murky](#)

**Honolulu Civil Beat:** [Honor Hawaii And Our Residents By Reopening Safely](#)

**Honolulu Civil Beat:** [What The Heck Is Going On With Neighbor Island Travel Rules?](#)

**KHON2:** [Ige verbally agrees to pre-travel test for inter-island travel to Maui County](#)

**KHON2:** [Visitor COVID-19 cases to be reflected in Honolulu's reopening tiers](#)

**The Maui News:** [Maui's protocols for interisland flights to mirror trans-Pacific plan](#)

**Travel Pulse:** [Hawaii Remains Conflicted Over COVID-19 Testing as Reopening Date Approaches](#)

**Forbes:** [Hawaii Reopening: Airlines Offer Their Customers Exclusive COVID-19 Testing Options](#)

## Helpful Resources

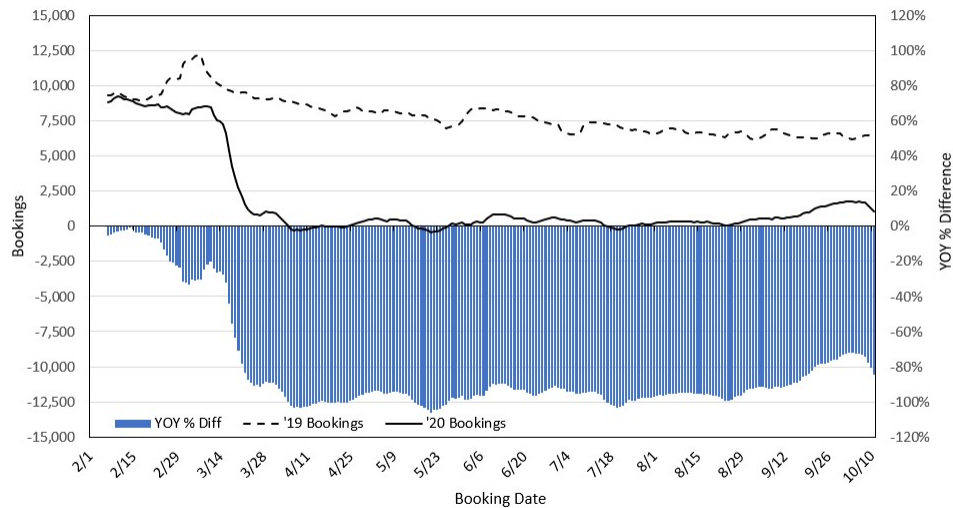
Department of Health  
<https://hawaiiocovid19.com/>

Department of Health  
<https://health.hawaii.gov/docd/advisories/novel-coronavirus-2019>

Dept. of Business, Economic Development & Tourism  
<https://dbedt.hawaii.gov/economic/covid19/>

Department of Transportation  
<https://hidot.hawaii.gov/coronavirus/>

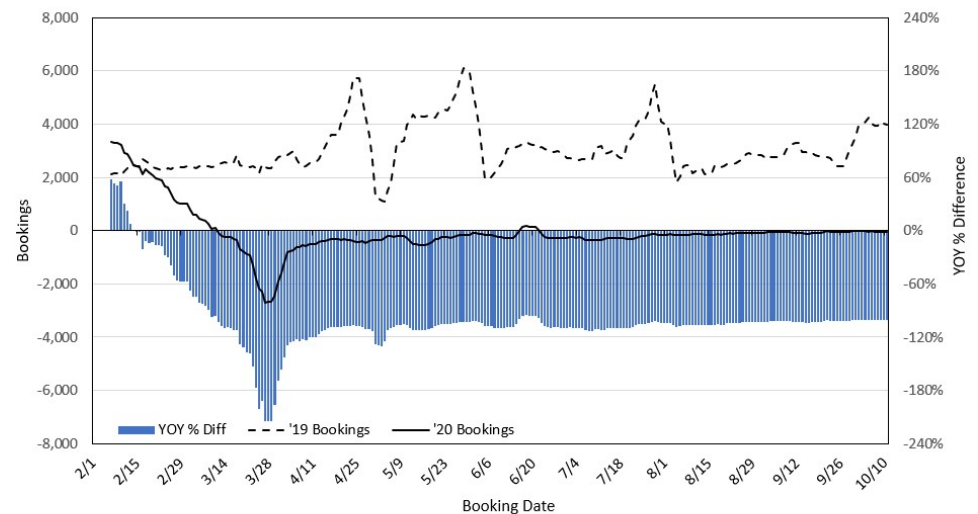
### Travel Agency Bookings to Hawaii for Future Arrivals\* Based on a 7-day Moving Average, 2020 vs 2019 U.S.



\*Future Arrivals refers to all arrivals that are 'future' relative to the referenced booking date.  
Source: Global Agency Pro

Update: Oct 11, 2020

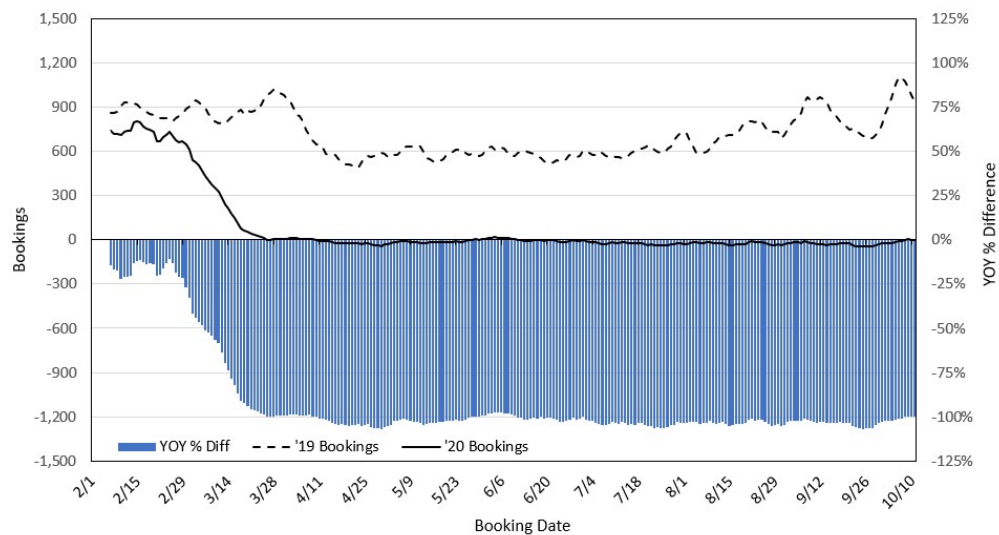
### Travel Agency Bookings to Hawaii for Future Arrivals\* Based on a 7-day Moving Average, 2020 vs 2019 Japan



\*Future Arrivals refers to all arrivals that are 'future' relative to the referenced booking date.  
Source: Global Agency Pro

Update: Oct 11, 2020

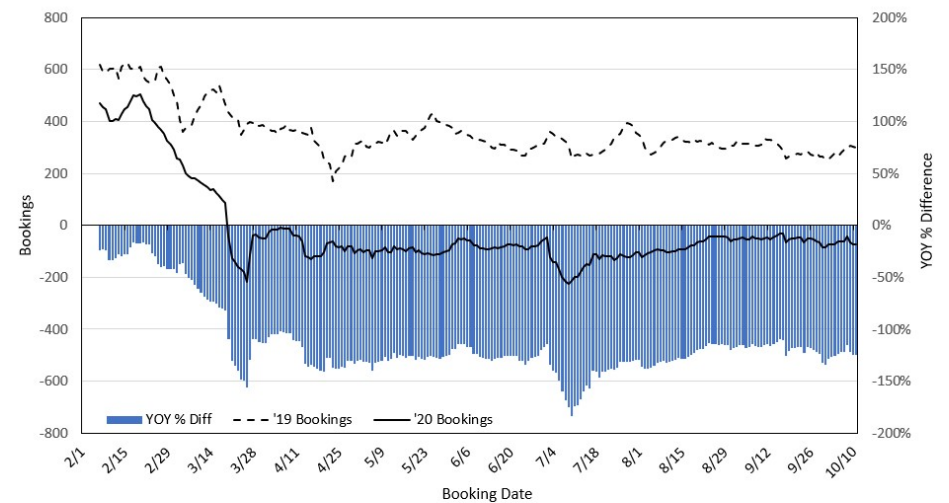
### Travel Agency Bookings to Hawaii for Future Arrivals\* Based on a 7-day Moving Average, 2020 vs 2019 Canada



\*Future Arrivals refers to all arrivals that are 'future' relative to the referenced booking date.  
Source: Global Agency Pro

Update: Oct 11, 2020

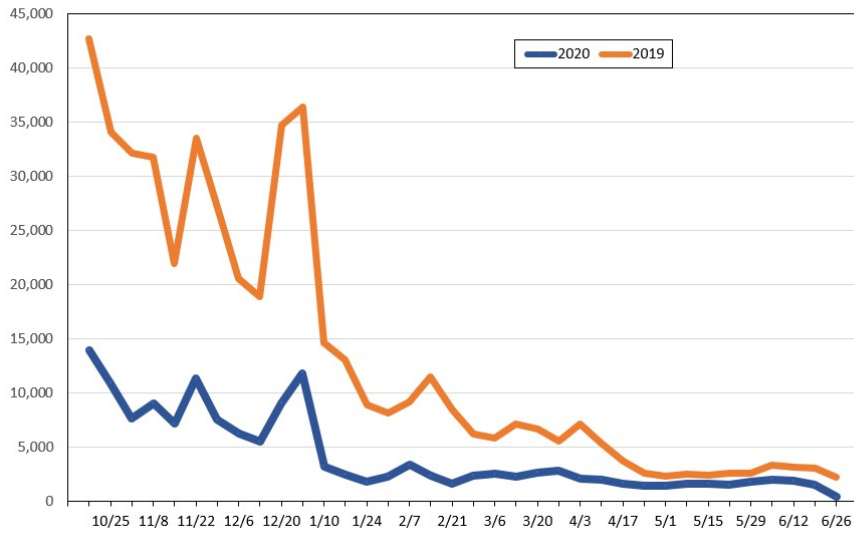
### Travel Agency Bookings to Hawaii for Future Arrivals\* Based on a 7-day Moving Average, 2020 vs 2019 Australia



\*Future Arrivals refers to all arrivals that are 'future' relative to the referenced booking date.  
Source: Global Agency Pro

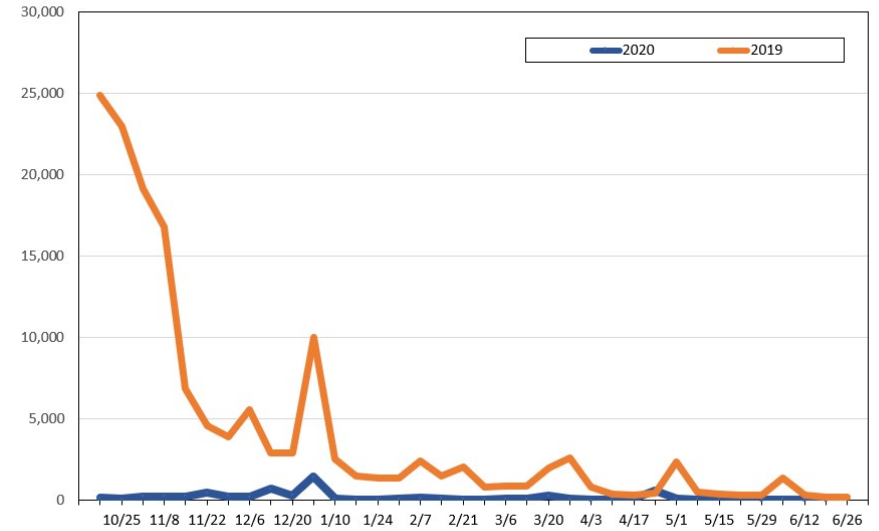
Update: Oct 11, 2020

**Travel Agency Weekly Bookings for Future Travel to Hawai'i as of October 11, 2020**  
U.S.



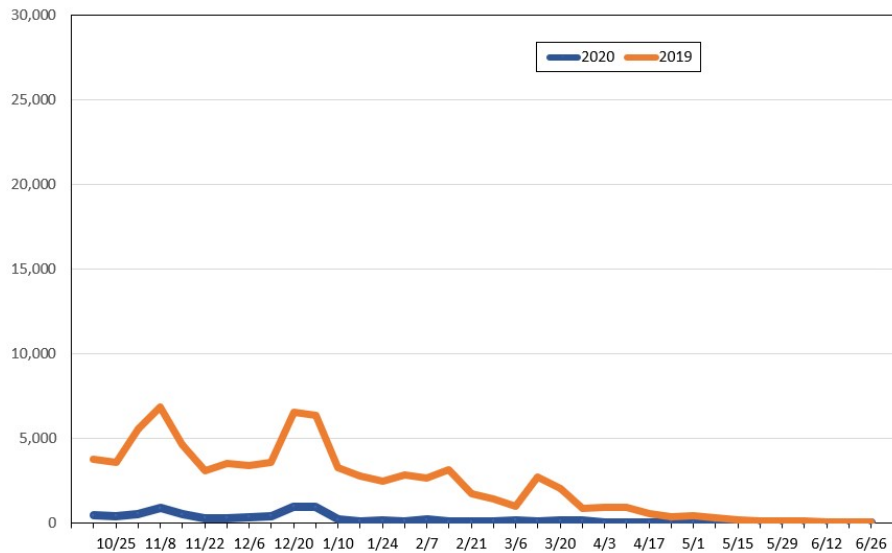
Source: Global Agency Pro, as of October 11, 2020

**Travel Agency Weekly Bookings for Future Travel to Hawai'i as of October 11, 2020**  
Japan



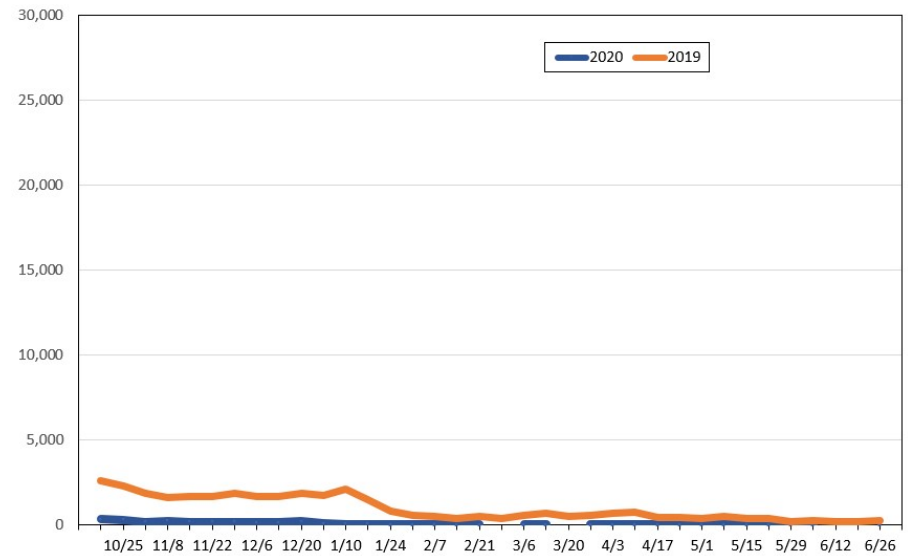
Source: Global Agency Pro, as of October 11, 2020

**Travel Agency Weekly Bookings for Future Travel to Hawai'i as of October 11, 2020**  
Canada



Source: Global Agency Pro, as of October 11, 2020

**Travel Agency Weekly Bookings for Future Travel to Hawai'i as of October 11, 2020**  
Australia



Source: Global Agency Pro, as of October 11, 2020