

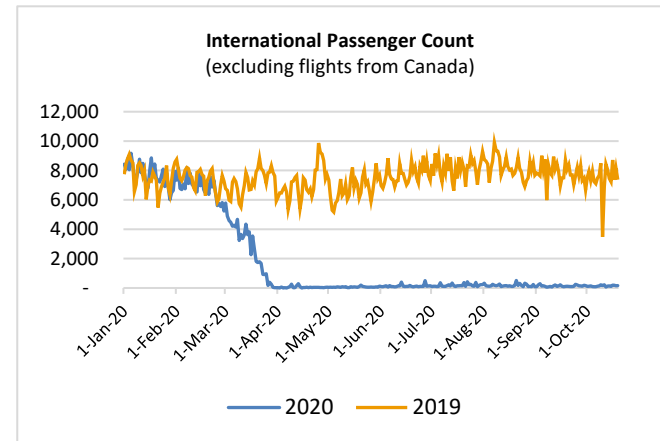
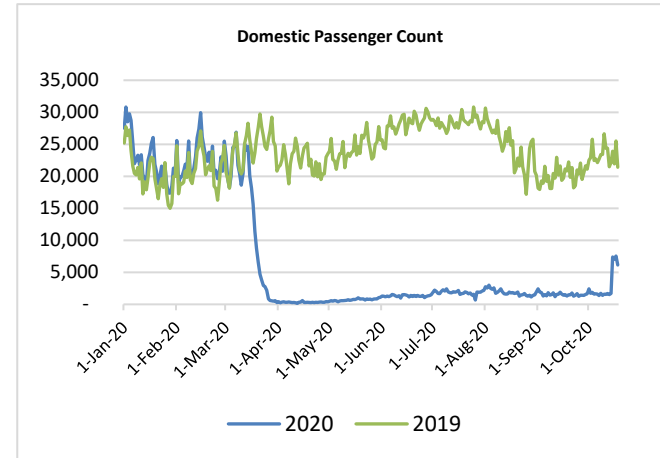
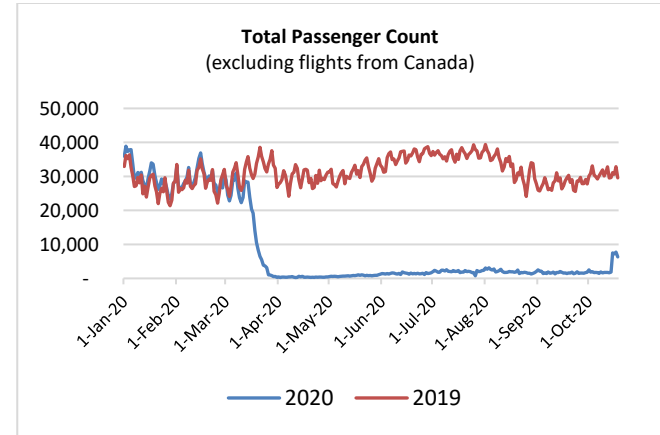
HTA COVID-19 UPDATE

(Issued: 10/19/20 @ 4:30pm)

Reason for Trip by Arrival Airport - Transpacific Screened Passengers as of 10/18/20	Honolulu (HNL)	Kahului (OGG)	Kona (KOA)	Lihue (LIH)	Grand Total
Airline Crew	287	64	47	34	432
Corporate Meeting	4	1	0	1	6
Essential Worker	157	24	22	23	226
Honeymoon	12	18	1	9	40
Incentive Trip	1	0	0	1	2
Intended Resident	125	40	24	21	210
Military or Federal Government	223	0	0	4	227
Other	51	17	6	26	100
Other Business	164	61	39	17	281
Pleasure/Vacation	966	866	316	475	2,623
Returning Resident	932	133	156	53	1,274
Sports Event	1	0	0	0	1
To Attend School	9	0	0	0	9
To Get Married	2	2	0	0	4
Transit	225	0	2	1	228
Visiting Friends or Relatives	655	127	115	81	978
Grand Total	3,814	1,353	728	746	6,641

Source: Safe Travels program developed by the State of Hawaii Office of Enterprise Technology Services
Note: The data is preliminary and subject to change

Market Impact Update: <https://www.dropbox.com/10/19/20 HTA COVID19 Update>



Daily Passenger Count Table

10/18/2020	Domestic	International	Total
Oahu	3609	150	3759
Maui	1225		1225
Island of Hawaii	647		647
Kauai	676		676
State	6157	150	6307

Novel Coronavirus in Hawaii

COVID-19 Positive Cases

Cumulative totals as of 12:00 noon on October 19, 2020

Total Cases	14,068 (39 new)
Required Hospitalization	1,012†
Death	187
Released from Isolation	11,078§
Hawaii County	1,059
Honolulu County	12,494
Kauai County	60
Maui County	411 †
Pending	0
Residents diagnosed outside of Hawaii	44

Footnotes for COVID-19 Cases

*As a result of updated information, one case was recategorized from Honolulu to Hawaii.

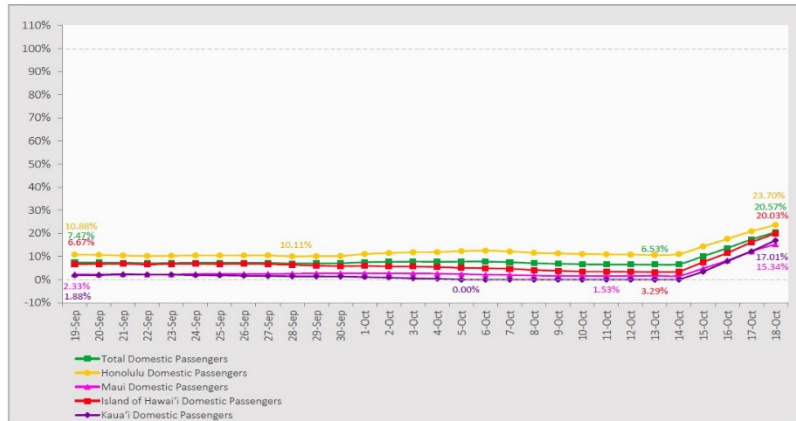
†One case is a Lanai resident whose exposure is on Maui Island and who will be remaining on Maui Island for the interim.

‡Includes Hawaii residents hospitalized out of state.

§Includes cases that meet isolation release criteria (Isolation should be maintained until at least 24 hours after resolution of fever and myalgia without the use of antipyretics OR at least 10 days have passed since symptom onset, whichever is longer). (The cases that have died and one case that has left the jurisdiction have been removed from these counts). Positive cases include confirmed cases, and Hawaii residents and non-residents; data are preliminary and subject to change. Note that CDC provides case counts according to states of residence.

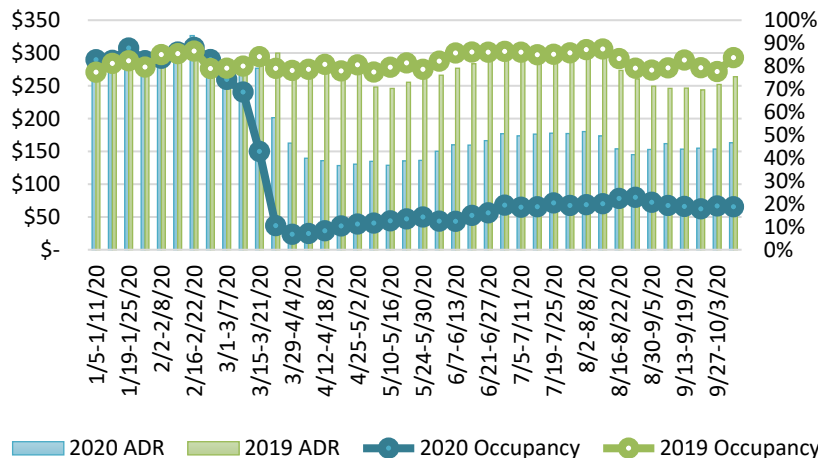
7-Day Domestic by Island Moving Average Daily Passenger Volume

2020 Volume as Percentage of 2019 Volume
Through October 18, 2020



Source: HVCB analysis based on data from DBEDT
Note: Passenger volume figures include both visitors and residents.

State of Hawai'i Hotel Performance by Week - 2020 vs 2019



Source: STR, Inc. © Copyright 2020 Hawai'i Tourism Authority

Hawaii Hotel Performance Info:

For the week of October 04 – October 10, 2020

	Occupancy	ADR	RevPAR
State of Hawaii	18.7%	\$ 163.14	\$ 30.58
Oahu	19.3%	\$ 151.83	\$ 29.26
Maui County	16.2%	\$ 201.55	\$ 32.59
Kauai County	17.7%	\$ 168.20	\$ 29.83
Island of Hawaii	22.8%	\$ 142.63	\$ 32.50

Domestic by Island Month-to-Date and Year-to-Date Daily Passenger Volume

2020 Volume versus 2019 Volume
Through October 18, 2020

October 2020 (Month-to-Date through October 18)

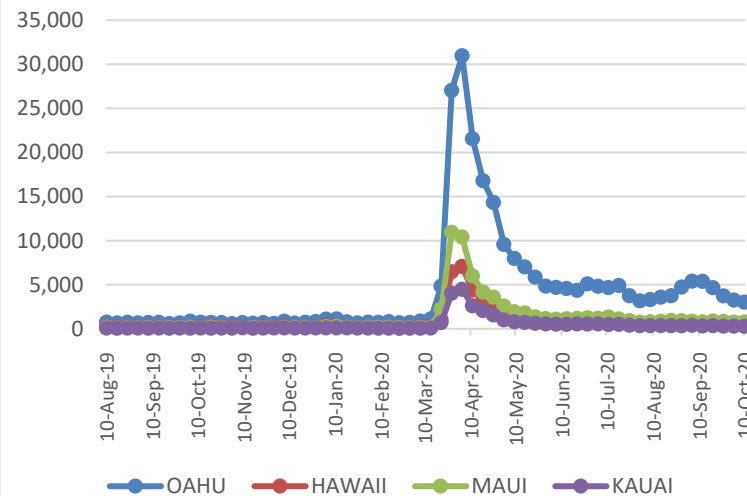
	2020	2019	Volume Change	Percent Change
Honolulu	36,946	224,111	-187,165	-83.5%
Maui County	7,649	111,263	-103,614	-93.1%
Island of Hawai'i	4,425	42,590	-38,165	-89.6%
Kaua'i	2,543	37,663	-35,120	-93.2%
Total	51,563	415,627	-364,064	-87.6%

2020 (Year-to-Date through October 18)

	2020	2019	Volume Change	Percent Change
Honolulu	1,201,224	3,703,361	-2,502,137	-67.6%
Maui County	465,329	1,805,333	-1,340,004	-74.2%
Island of Hawai'i	233,988	795,724	-561,736	-70.6%
Kaua'i	154,607	617,124	-462,517	-74.9%
Total	2,055,148	6,921,542	-4,866,395	-70.3%

Source: HVCB analysis based on data from DBEDT
Note: Passenger volume figures include both visitors and residents. Total includes other international passengers. 2020 includes one additional day due to Leap Year (February 29th, 2020).

2020 Initial Weekly Unemployment Claims by Island



Weekly Unemployment Initial Claims: October 10, 2020

State of Hawaii	4,896
C&C of Oahu	3,016
Hawaii County	689
Maui County	757
Kauai County	283
Agent (filed in Hawaii against another state)	151

News Highlights

October 19, 2020

Honolulu Star Advertiser: [Arrivals remain strong after COVID-19 testing program launch](#)

Honolulu Star Advertiser: [2 Kauai restaurants ban tourists from dining rooms](#)

Honolulu Star Advertiser: [Column: To balance health and economic rebound, isles need a solid medical system, good behaviors, safe travels](#)

Honolulu Star Advertiser: [Some travelers are allowed to enter Hawaii without tests from approved labs](#)

KHON2: [Maui, Big Island explain how different rules are shared with travelers](#)

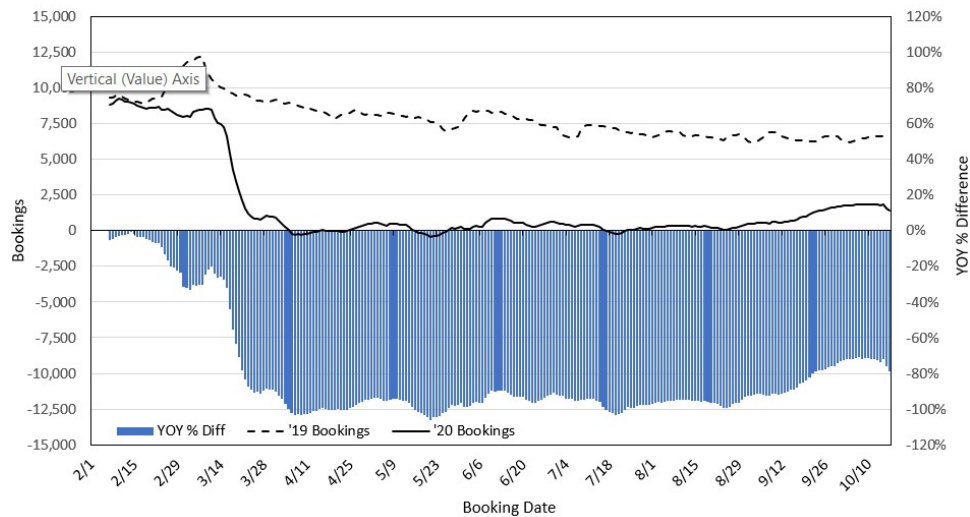
KHON2: [Surveillance testing begins Monday on Oahu, Big Island testing catches few positive cases](#)

KITV4: [Hawaii restaurant cards starting to be used](#)

Big Island Now: [Hawaii's COVID Total Tops 14,000 Since Pandemic Began](#)

CNBC: [Hawaii reopens to the tourism — Here's what you need to know](#)

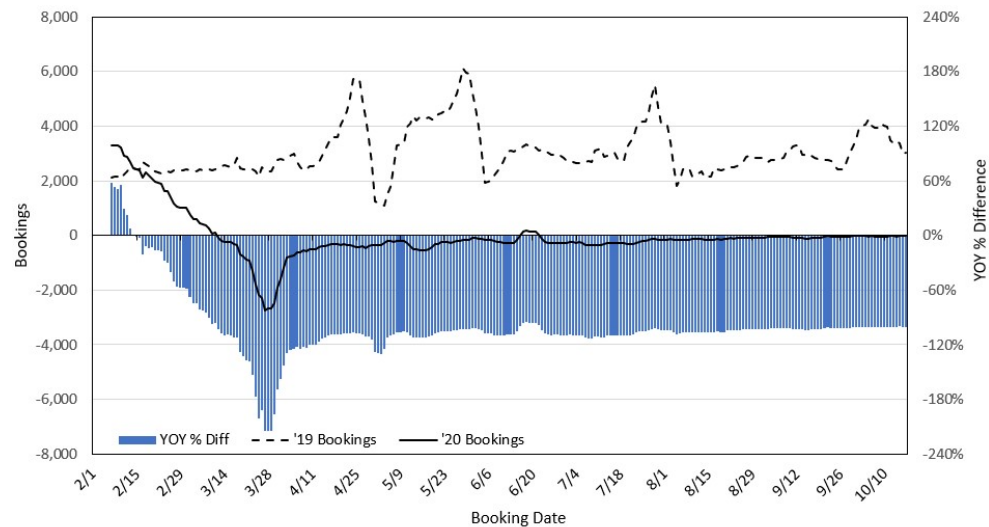
Travel Agency Bookings to Hawaii for Future Arrivals* Based on a 7-day Moving Average, 2020 vs 2019 U.S.



*Future Arrivals refers to all arrivals that are 'future' relative to the referenced booking date.
Source: Global Agency Pro

Update: Oct 17, 2020

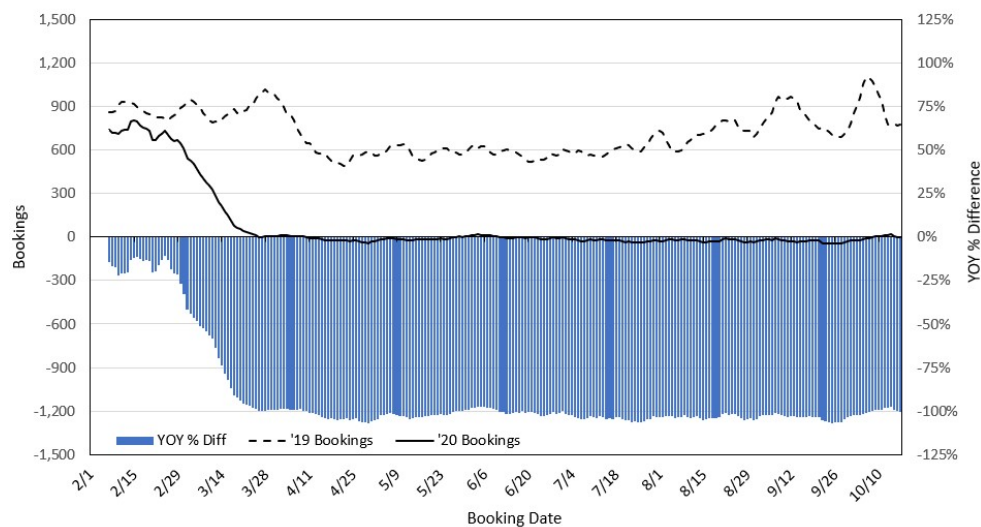
Travel Agency Bookings to Hawaii for Future Arrivals* Based on a 7-day Moving Average, 2020 vs 2019 Japan



*Future Arrivals refers to all arrivals that are 'future' relative to the referenced booking date.
Source: Global Agency Pro

Update: Oct 17, 2020

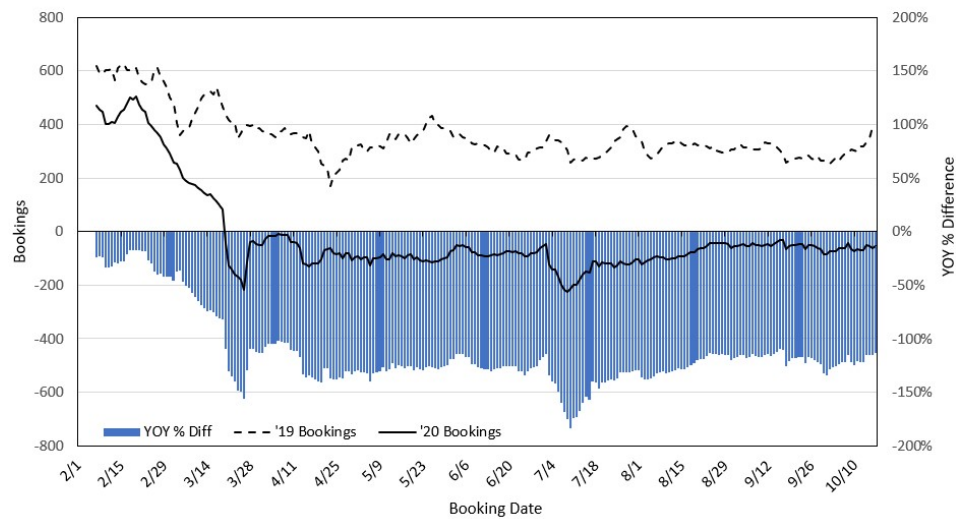
Travel Agency Bookings to Hawaii for Future Arrivals* Based on a 7-day Moving Average, 2020 vs 2019 Canada



*Future Arrivals refers to all arrivals that are 'future' relative to the referenced booking date.
Source: Global Agency Pro

Update: Oct 17, 2020

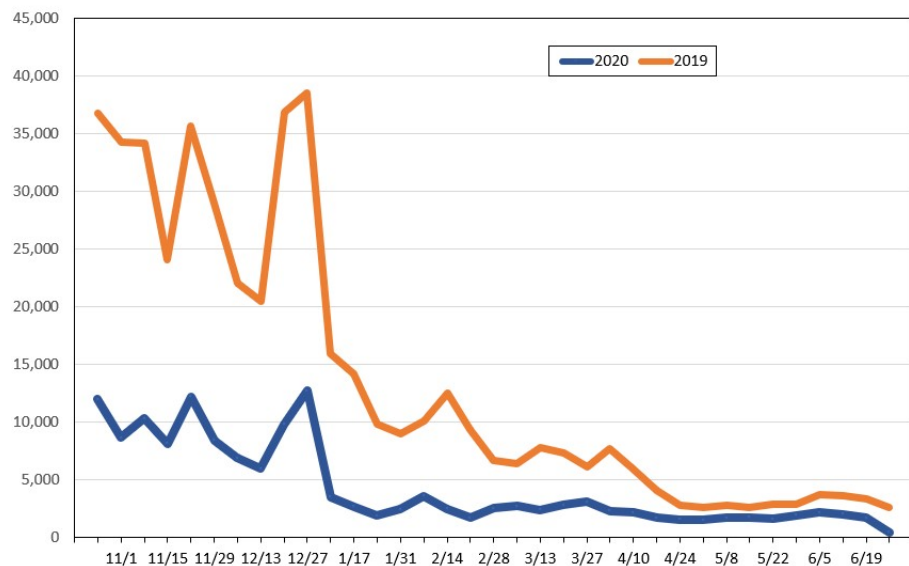
Travel Agency Bookings to Hawaii for Future Arrivals* Based on a 7-day Moving Average, 2020 vs 2019 Australia



*Future Arrivals refers to all arrivals that are 'future' relative to the referenced booking date.
Source: Global Agency Pro

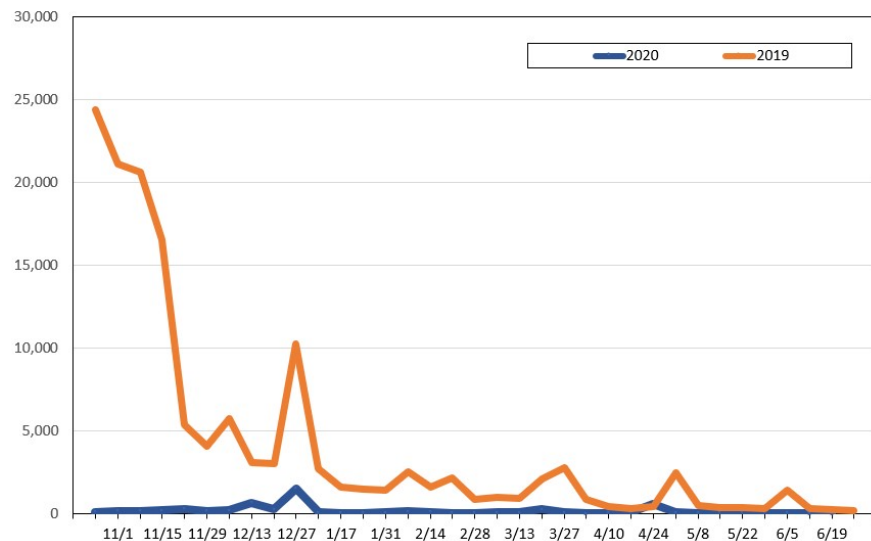
Update: Oct 17, 2020

Travel Agency Weekly Bookings for Future Travel to Hawai'i as of October 17, 2020
U.S.



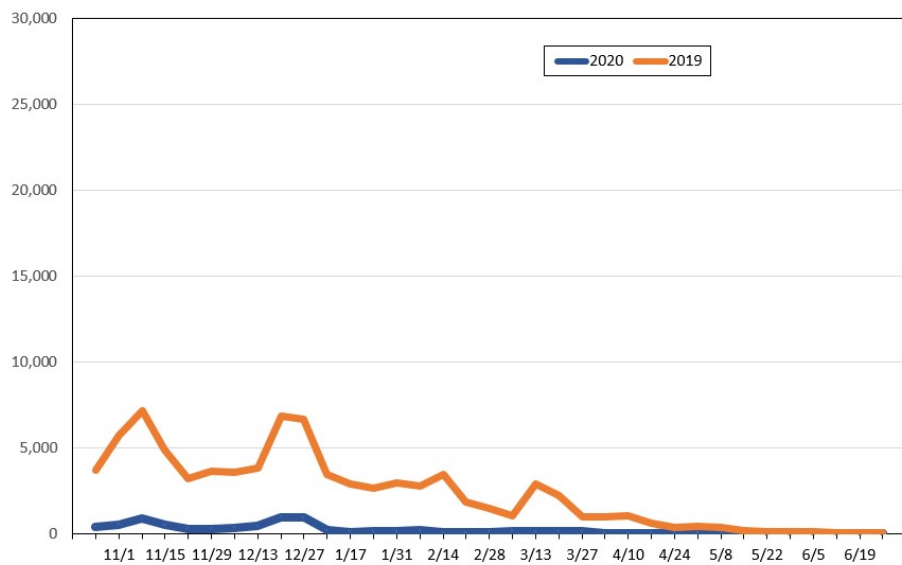
Source: Global Agency Pro, as of October 17, 2020

Travel Agency Weekly Bookings for Future Travel to Hawai'i as of October 17, 2020
Japan



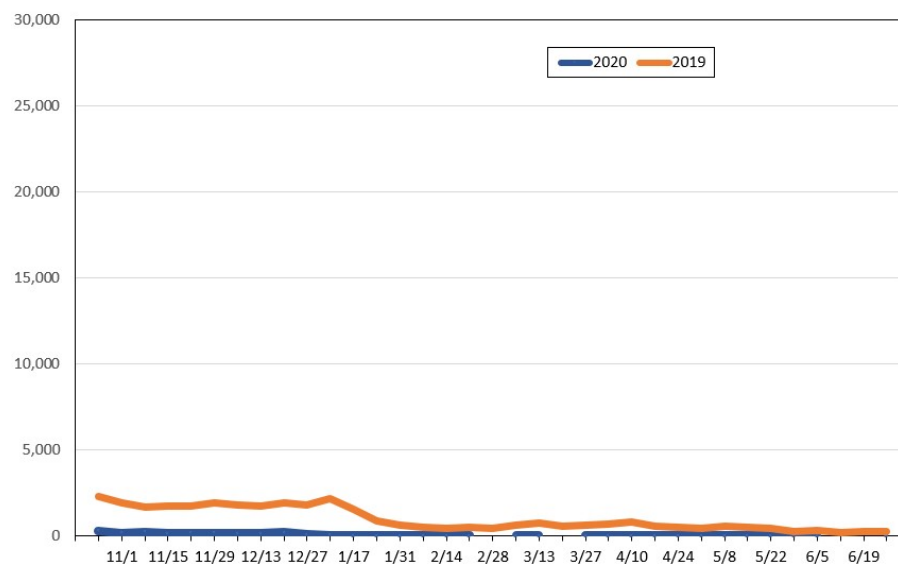
Source: Global Agency Pro, as of October 17, 2020

Travel Agency Weekly Bookings for Future Travel to Hawai'i as of October 17, 2020
Canada



Source: Global Agency Pro, as of October 17, 2020

Travel Agency Weekly Bookings for Future Travel to Hawai'i as of October 17, 2020
Australia



Source: Global Agency Pro, as of October 17, 2020